

# Emergency Call IP Video Phone Solution

Emergency Call IP Video Phone solution

- AP-EVP100 Emergency Call IP Video Phone
- AP-EVP95 Emergency Call IP Video Phone
- AP-EVP90 Emergency Call IP Video Phone
- AP-EVP70 Emergency Call IP Video Phone

[Learn More >](#)

**AddPac**

**AddPac Technology**

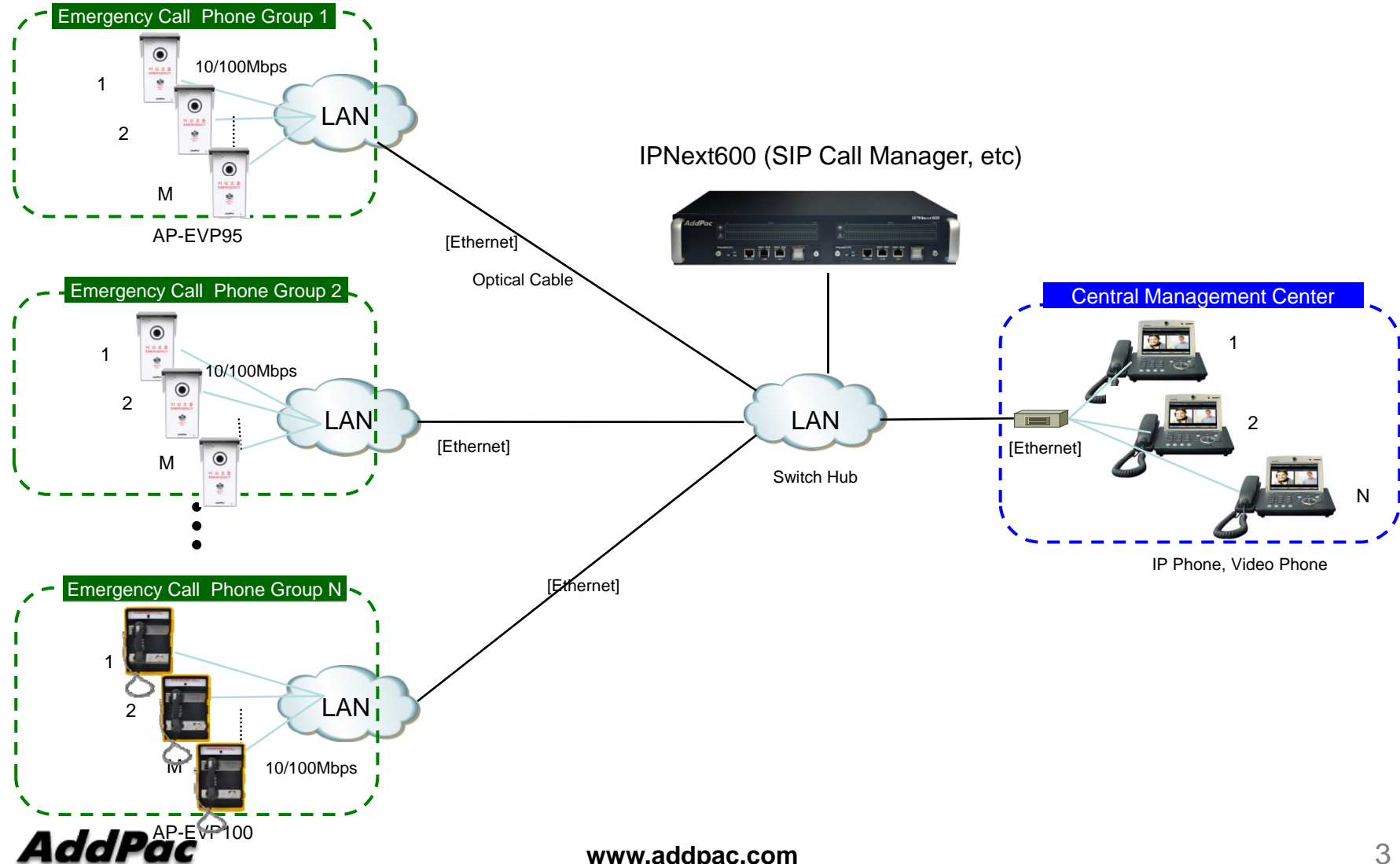
Sales and Marketing

[www.addpac.com](http://www.addpac.com)





# Contents

- Emergency Call IP Video Phone Service Diagram
- Emergency Call IP Video Phone Comparison Table
- Emergency Call IP Video Phone Series
  - AP-EVP100
  - AP-EVP95
  - AP-EVP90
  - AP-EVP70
- IP-PBX Solution for Emergency Call Center
- IP Video Phone Solution for Emergency Call Center
- Video Recording Solution for Emergency Call Center
- NMS (Network Management System) for Emergency Call IP Video Phone

# Emergency Call IP Video Phone Service Diagram



# Emergency Call IP Video Phone Comparison Table

Model	AP-EVP100	AP-EVP95	AP-EVP90	AP-EVP70
Service Features				
Voice Duplex	Full Duplex	Full Duplex	Full Duplex	Full Duplex
Key Pad	3x4 Key Support	Call Button	Call Button	Call Button
Handset	Support	N/A	N/A	N/A
Video Codec	H.264/MPEG4/H.263	H.264/MPEG4/H.263	H.264/MPEG4/H.263	H.264/MPEG4/H.263
HD/SD	SD	HD	SD	SD
AutoFocus	N/A	Support	N/A	N/A
Day & Night	N/A	Support	N/A	N/A
Voice Codec	G.711/G.726,etc	G.711/G.726,etc	G.711/G.726,etc	G.711/G.726,etc
Signaling	H.323/SIP	H.323/SIP	H.323/SIP	H.323/SIP
Speaker Phone	Support	Support	Support	Support
LAN Port	1	1	1	1
PoE(Optional)	Support	Support	Support	Support



# AP-EVP100

## Emergency Call IP Video Phone

# Product Overview

## AP-EVP100 Emergency IP Video Phone

- Emergency Call IP Video Phone Solution
- High-performance Video, Audio and Voice Service
- SIP VoIP Signaling Stack Embedded
- High-performance Video/Voice Codec Support
  - H.264/MPEG4/H.263, G.711, etc
- One(1) 10/100Mbps Fast Ethernet
- PoE(Power over Ethernet) Support
- High Quality Speaker Phone Features
- Powerful Acoustic Echo Canceller Chip Embedded
- Powerful Network Protocols (PPPoE, DHCP, Static Routing, etc)
- Firmware Upgradeable Architecture
- VVoIP Solution with Outstanding Network Service Capability
- Audio/Video Privacy Protection

# Hardware Specification

## AP-EVP100 Emergency IP Video Phone

- RISC+DSP Microprocessor Computing Power (Dual Processor Architecture)
- Video Camera Interface
- Audio and Voice Interface
  - Internal MIC
  - Internal Speaker
  - Hand Set, On/Off Hook
  - 3 x 4 keyPAD
- Emergency Call Button
- Network Interface
  - One(1) 10/100Mbps Fast Ethernet
- Power Supply
  - Power over Ethernet

# Hardware Specification

## AP-EVP100 Emergency IP Video Phone

### Hardware Specifications

AP-EVP100 IP Video Phone	Basic Specifications
CPU	RISC+ DSP Microprocessor
Ethernet Interface	1-Ports 10/100Mbps Ethernet Interface(RJ-45)
Flash Memory	512Mbyte NAND FLASH
Base Memory	128Mbyte DDR
Power Requirement	Power over Ethernet, 12Watt
Operating Temperature	0°C ~ 45°C (32 °F ~ 122°F)
Storage Temperature	-40°C ~ 85°C (-40°C ~ 185°F)
Relative Humidity	5% ~ 95% (Non-condensing)
Dimensions	235mm x 350mm x 80mm (W x H x D)
Weight (g)	4.3 Kg

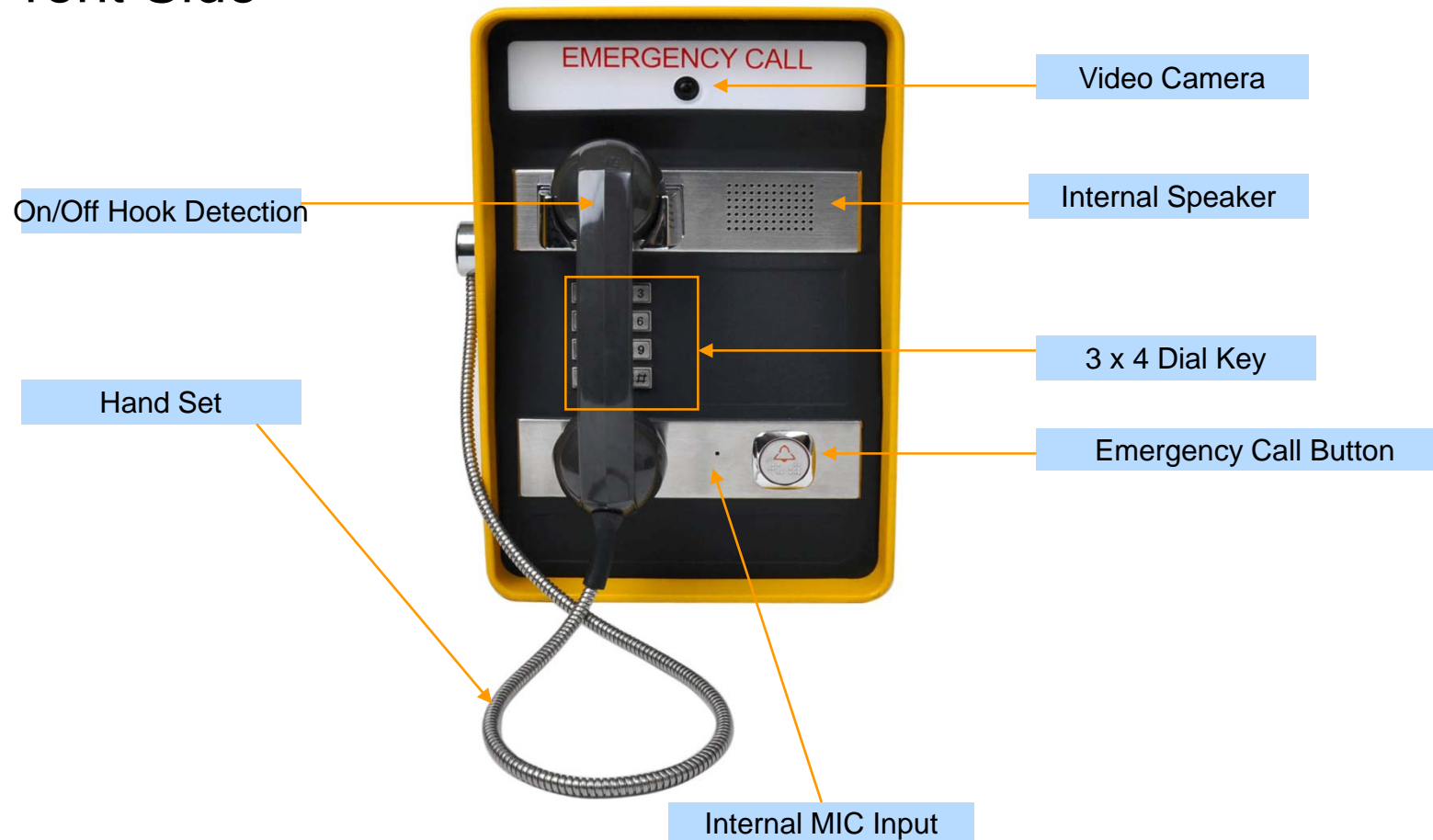




# Hardware Specification

AP-EVP100 Emergency IP Video Phone

## Front Side



# Hardware Specification

AP-EVP100 Emergency IP Video Phone

Bottom Side



Outlet for LAN cable





# AP-EVP95 Emergency Call IP Phone

# Product Overview

## AP-EVP95 Emergency Call HD IP Video Phone

- Emergency Call HD IP Video Phone Solution
- High-performance HD Video, Audio and Voice Service
- SIP/H.323 VoIP Signaling Stack Embedded
- Autofocus HD Video Camera Module
- Day & Night Emergency Call Support
- High-performance Video/Voice Codec Support
  - H.264/MPEG4/H.263, G.711, etc
- One(1) 10/100Mbps Fast Ethernet
- PoE(Power over Ethernet) Support
- High Quality Speaker Phone Features
- Powerful Acoustic Echo Canceller Chip Embedded
- Powerful Network Protocols (PPPoE, DHCP, Static Routing, etc)
- Firmware Upgradeable Architecture
- VVoIP Solution with Outstanding Network Service Capability
- Steel Chassis

# Hardware Specification

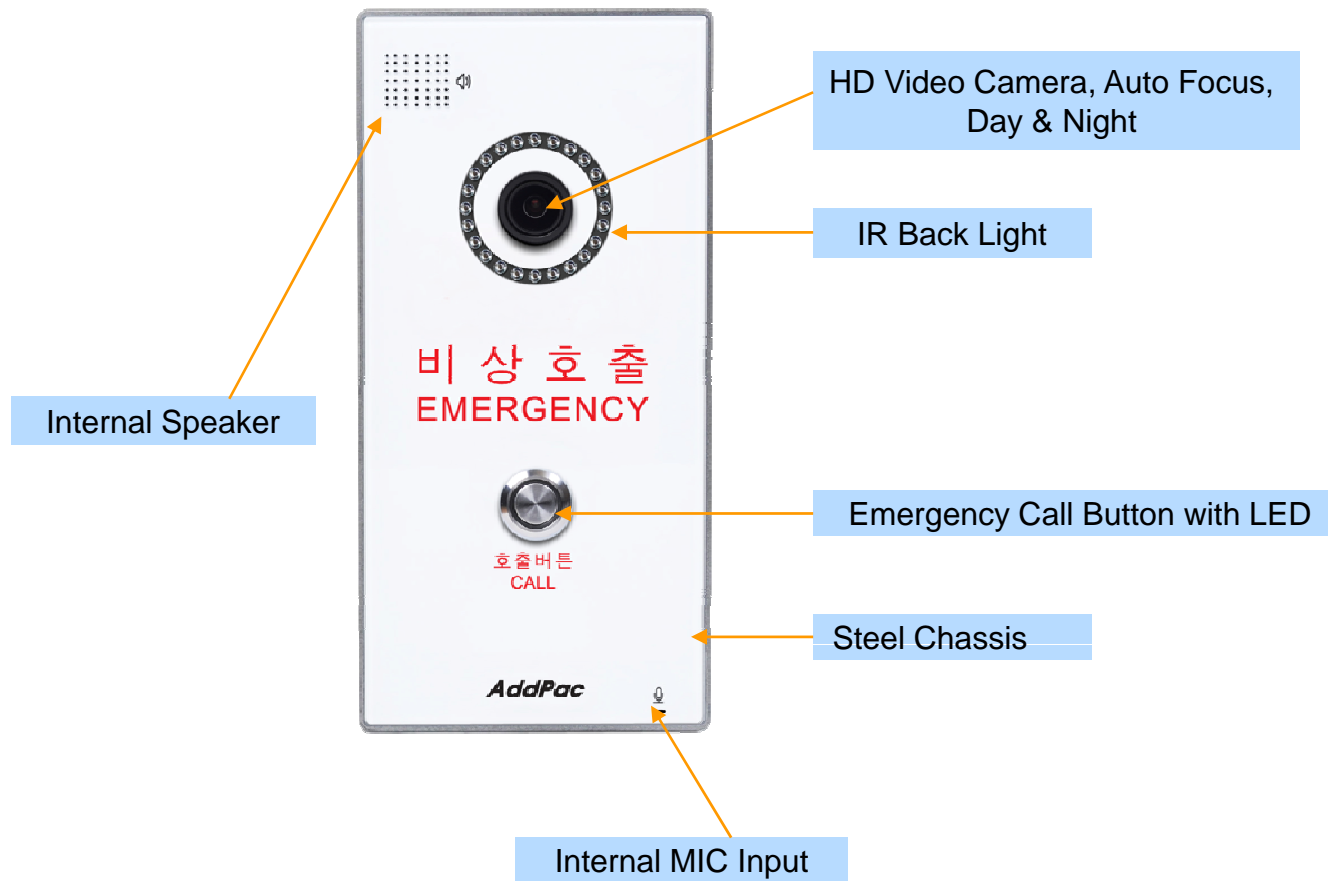
## AP-EVP95 Emergency Call HD IP Video Phone

- RISC+DSP Microprocessor Computing Power (Dual Processor Architecture)
- HD Video Camera Interface with IR back light
- Autofocus, Day & Night Video Camera
- Emergency Call Button & LAMP
- Audio and Voice Interface
  - Internal MIC
  - Internal Speaker
- Alarm & Relay Out Interface (door open, etc)
- RS232/RS485 Interface
- Network Interface
  - One(1) 10/100Mbps Fast Ethernet
- Power Supply
  - Power over Ethernet
  - External Power Supply Adaptor
- Die-Casting Steel Chassis

# Hardware Specification

AP-EVP95 Emergency Call HD IP Video Phone

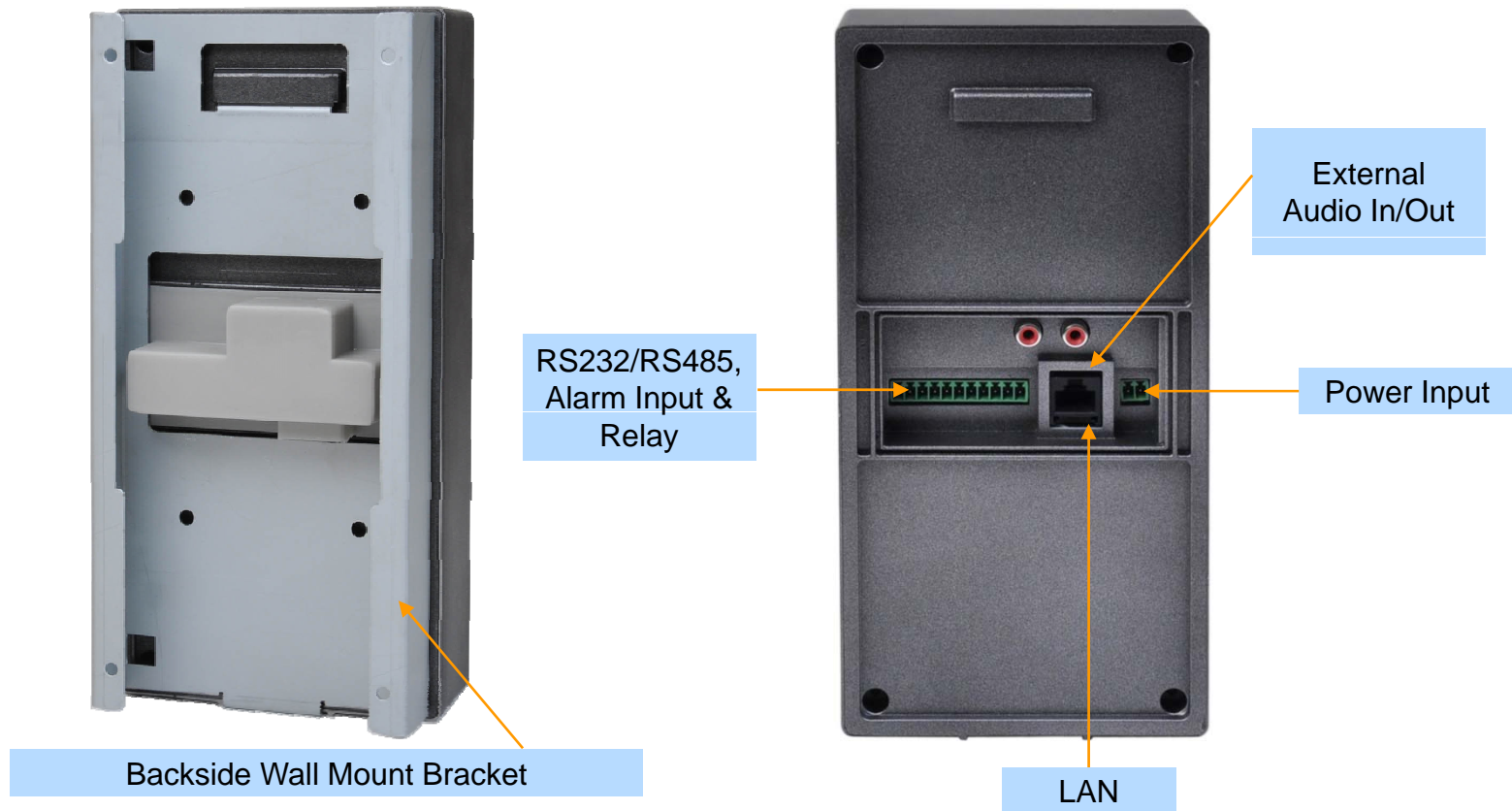
## Front Side



# Hardware Specification

AP-EVP95 Emergency Call HD IP Video Phone

## Back Side



# Hardware Specification

## AP-EVP95 Emergency Call HD IP Video Phone

### Power Supply

Terminal Block



12V 1A Power Adaptor

Example







# AP-EVP90

## Emergency Call IP Video Phone

# Product Overview

## AP-EVP90 Emergency IP Video Phone

- Emergency IP Video Phone Solution for Outdoor Application
- High-performance Video, Audio and Voice Service
- SIP VoIP Signaling Stack Embedded
- High-performance Video/Voice Codec Support
  - H.264/MPEG4/H.263, G.711, etc
- One(1) 10/100Mbps Fast Ethernet
- PoE(Power over Ethernet) Support
- High Quality Speaker Phone Features
- Powerful Acoustic Echo Canceller Chip Embedded
- Powerful Network Protocols (PPPoE, DHCP, Static Routing, etc)
- Firmware Upgradeable Architecture
- VVoIP Solution with Outstanding Network Service Capability
- Audio/Video Privacy Protection
- Steel Chassis

# Hardware Specification

## AP-EVP90 Emergency IP Video Phone

- RISC+DSP Microprocessor Computing Power (Dual Processor Architecture)
- Video Camera Interface
- Emergency Call Button & LAMP
- Audio and Voice Interface
  - Internal MIC
  - Internal Speaker
- Alarm & Relay Out Interface (door open, etc)
- RS232/RS485 Interface
- Network Interface
  - One(1) 10/100Mbps Fast Ethernet
- Power Supply
  - Power over Ethernet
  - External Power Supply Adaptor
- Die-Casting Steel Chassis



# Hardware Specification

AP-EVP90 Emergency IP Video Phone

## Front Side



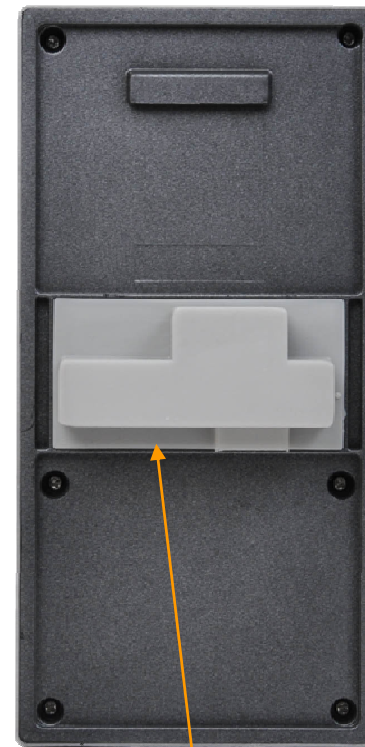
# Hardware Specification

AP-EVP90 Emergency IP Video Phone

## Back Side



Backside Wall Mount Bracket



Rubber Cover for Water Protect

# Hardware Specification

## AP-EVP90 Emergency IP Video Phone

### Power Supply

Terminal Block



12V 1A Power Adaptor

Example





# AP-EVP70

## Emergency Call IP Video Phone

# Product Overview

## AP-EVP70 Emergency Call IP Video Phone

- Emergency Call IP Video Phone Solution
- High-performance Video, Audio and Voice Service
- SIP VoIP Signaling Stack Embedded
- High-performance Video/Voice Codec Support
  - H.264/MPEG4/H.263, G.711, etc
- One(1) 10/100Mbps Fast Ethernet
- PoE(Power over Ethernet) Support
- High Quality Speaker Phone Features
- Powerful Acoustic Echo Canceller Chip Embedded
- Powerful Network Protocols (PPPoE, DHCP, Static Routing, etc)
- Firmware Upgradeable Architecture
- VVoIP Solution with Outstanding Network Service Capability
- Audio/Video Privacy Protection
- Steel Chassis



# Hardware Specification

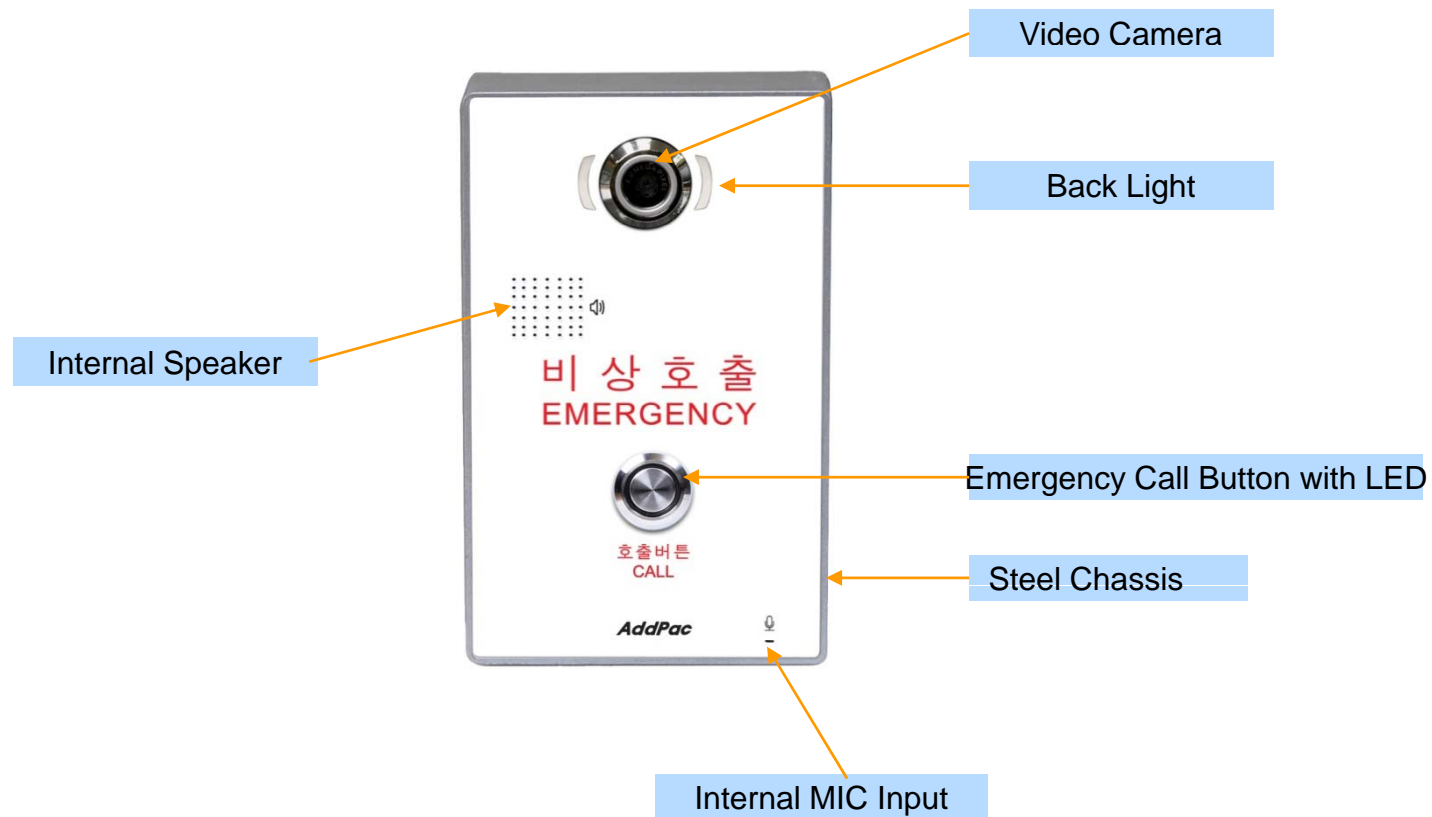
## AP-EVP70 Emergency Call IP Video Phone

- RISC+DSP Microprocessor Computing Power (Dual Processor Architecture)
- Video Camera Interface
- Emergency Call Button & LAMP
- Audio and Voice Interface
  - Internal MIC
  - Internal Speaker
- Alarm & Relay Out Interface (door open, etc)
- RS232/RS485 Interface
- Network Interface
  - One(1) 10/100Mbps Fast Ethernet
- Power Supply
  - Power over Ethernet
  - External Power Supply Adaptor
- Die-Casting Steel Chassis

# Hardware Specification

AP-EVP70 Emergency Call IP Video Phone

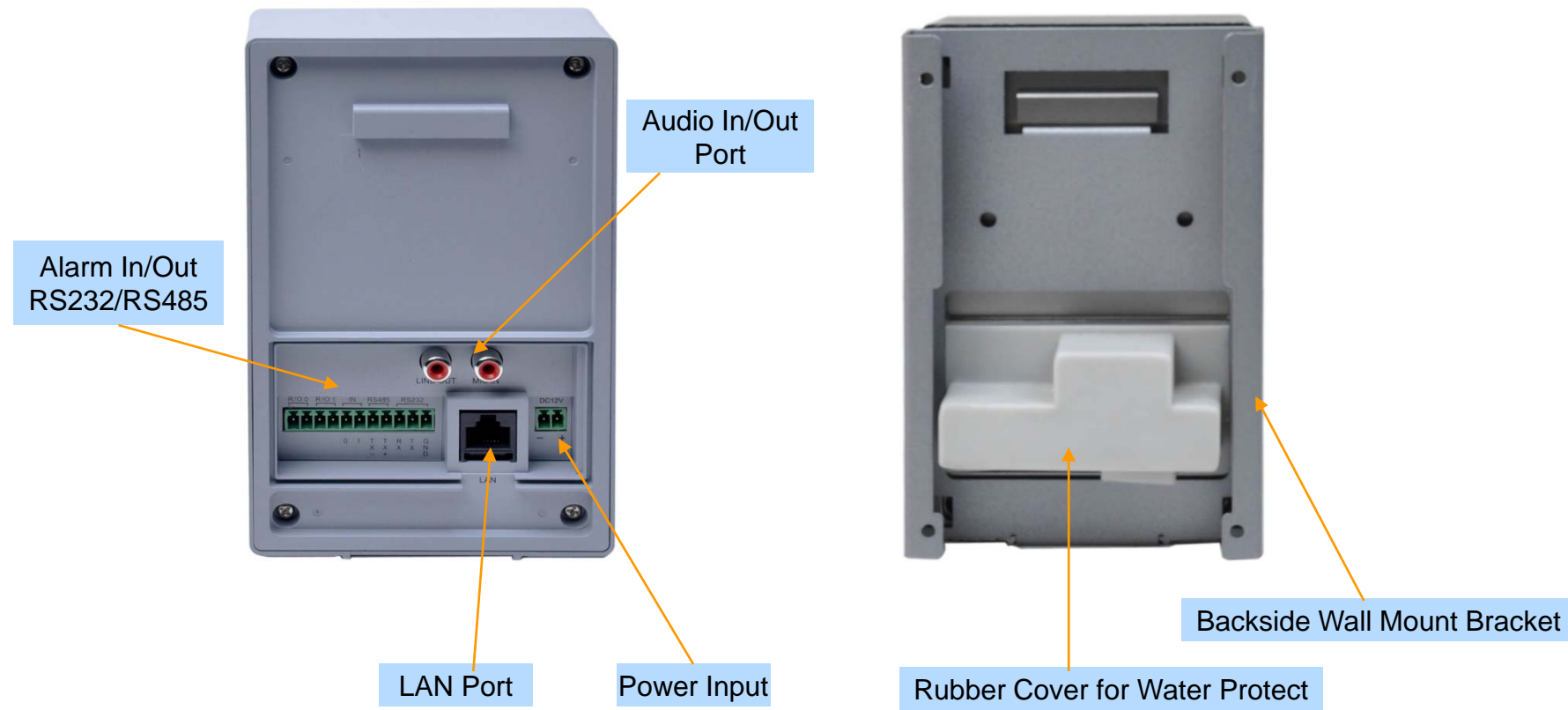
## Front Side



# Hardware Specification

AP-EVP70 Emergency Call IP Video Phone

## Back Side



# Hardware Specification

## AP-EVP70 Emergency Call IP Video Phone

### Power Supply

Terminal Block



12V 1A Power Adaptor

Example



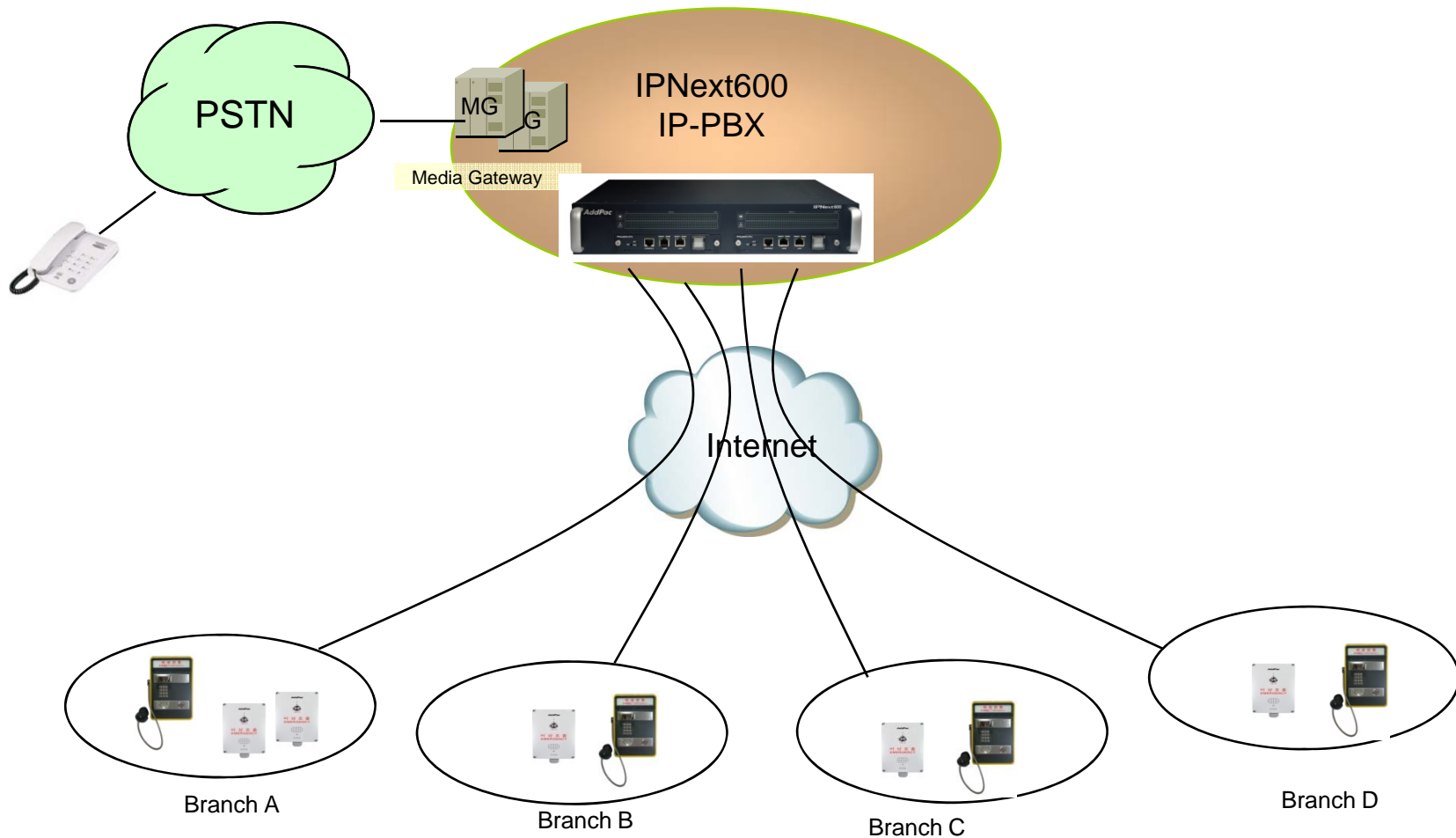


# IP-PBX Solution for Emergency Call Center



# IPNext600 IP-PBX Solution for Call Center

# Network Diagram



# Product Overview

## IPNext600 Next Generation IP-PBX System

- SIP Application Server, Proxy, Registrar and Location Server
- Multiple ITSP Trunk with SIP & H.323 Accounts Support
- Dual System Redundancy Architecture
  - Two(2) Fast Ethernet Interface / System
- High Performance RISC Architecture
- Powerful Network Protocols (PPPoE, DHCP, Static Routing, etc)
- IPv4/IPv6 Dual Stack
- RTP Proxy Function Embedded for Private IP and IPv6 Address Interworking
- User Presence Service Features for Smart Multimedia Messenger and Smart IP Phone
- IVR Scenario Editor, Voice Mail, Media Service (Coloring), Conference
- Firmware Upgradeable Architecture
- Smart Multimedia Manager for IP-PBX Management
- Smart Messenger Service (click to dial) for Unified Communication
- Smart NMS for Large Scale Deployment
- Advanced Voice QoS Mechanism
- Dual Redundancy Power Module

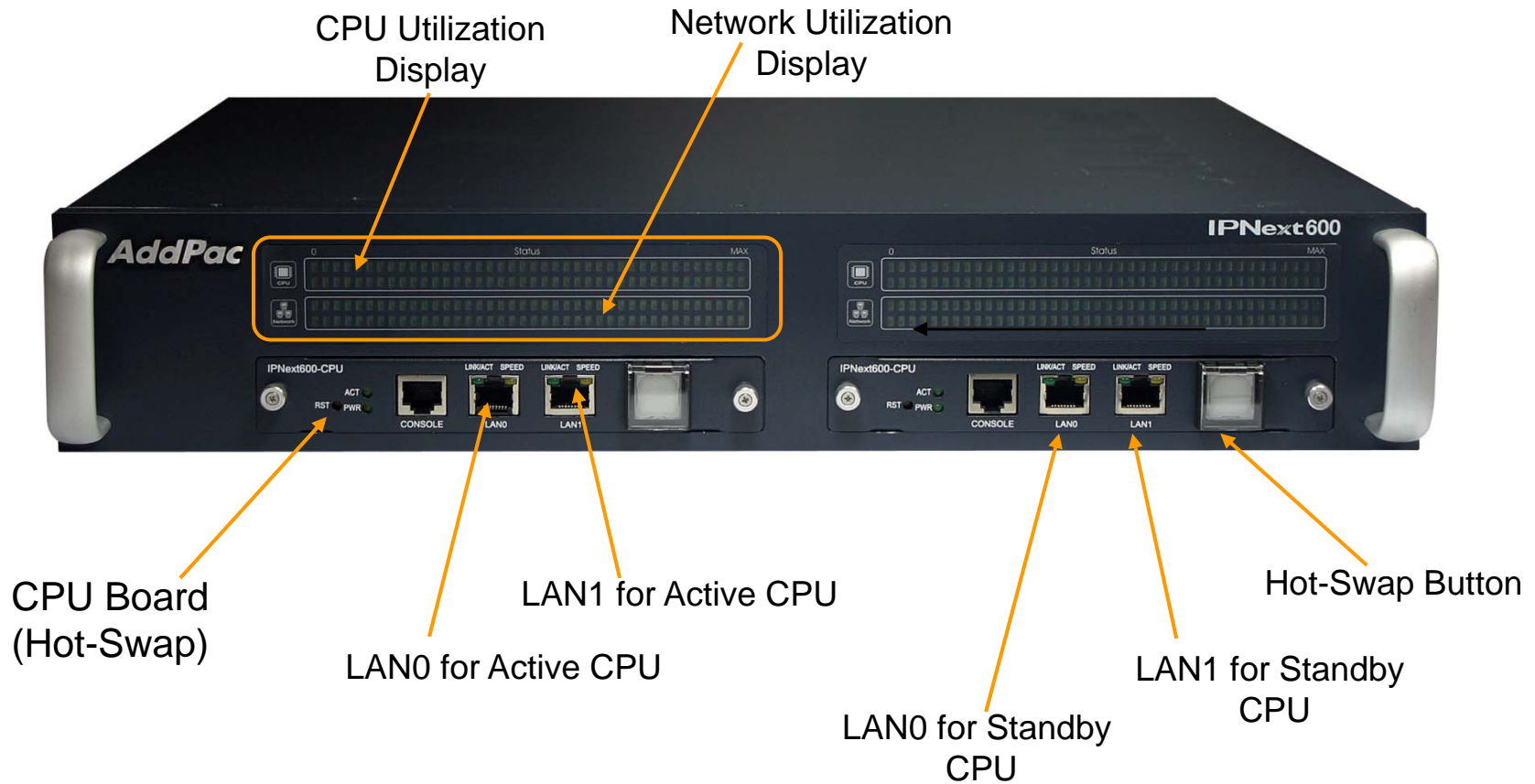


# Hardware Specification

IPNext600 Next Generation IP-PBX System

RISC  
CPU

## IPNext 600 Front Side



# Hardware Specification

IPNext600 Next Generation IP-PBX System






## IPNext 600 Back Side





# IP Video Phone Solution for Emergency Call Center

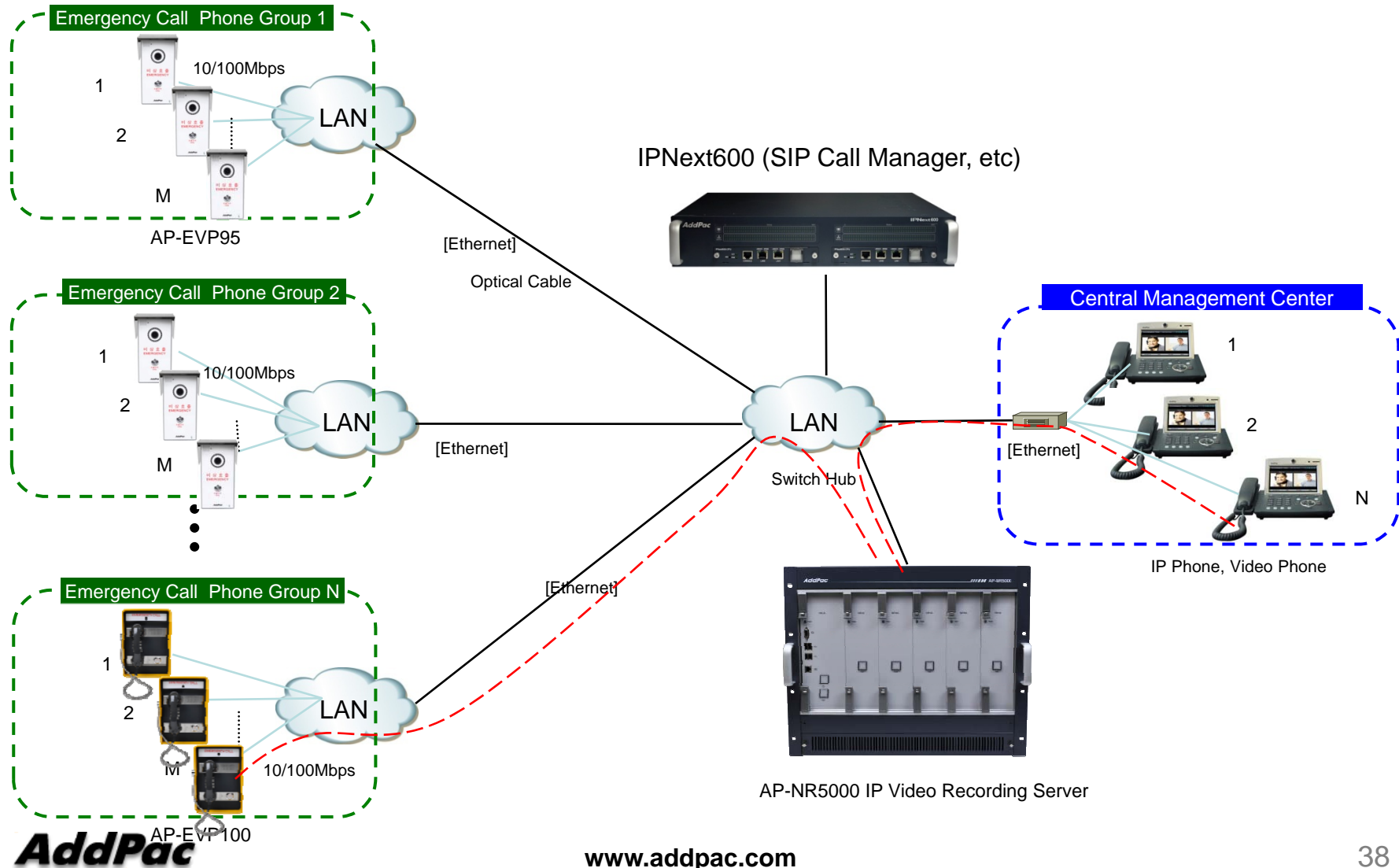
# IP Video Phone Comparison Table

	AP-VP700	AP-VP280	AP-VP230N
			
LCD Size	12.1 Inch Touch Screen	7 Inch Touch Screen	5 Inch Touch Screen
Camera	CMOS	CMOS	CMOS
Video Codec	H.263 MPEG4 H.264	H.263 MPEG4 H.264	H.263 MPEG4 H.264
Signaling	H.323/SIP	H.323/SIP	H.323/SIP
Camera Sensor	HD	SD	SD
Video Resolution	HD	SD	SD
LAN Port	2	2	2
PoE	N/A	Support	Support

# Video Recording Server for Emergency Call Center



# Network Diagram for Video Recording Service



# Product Overview

## AP-NR5000 Network Voice Recoding Server

- IP based Network Video Recording Server
- Linux Operating System
- Powerful Management and User Friendly Features
- High-performance Video Recoding Service
- IP based Video Terminal Interworking Support
- Legacy Video Player Support (AVI format, etc)
- Firmware Upgradeable Architecture
- One(1) 10/100/1000Mbps Gigabit Ethernet Interface
- Up to Five(5) 3.5Inch SATA Hard Disk Interface Support
- USB Interface Support

# Hardware Specification

## AP-N5000 Network Voice Recoding Server

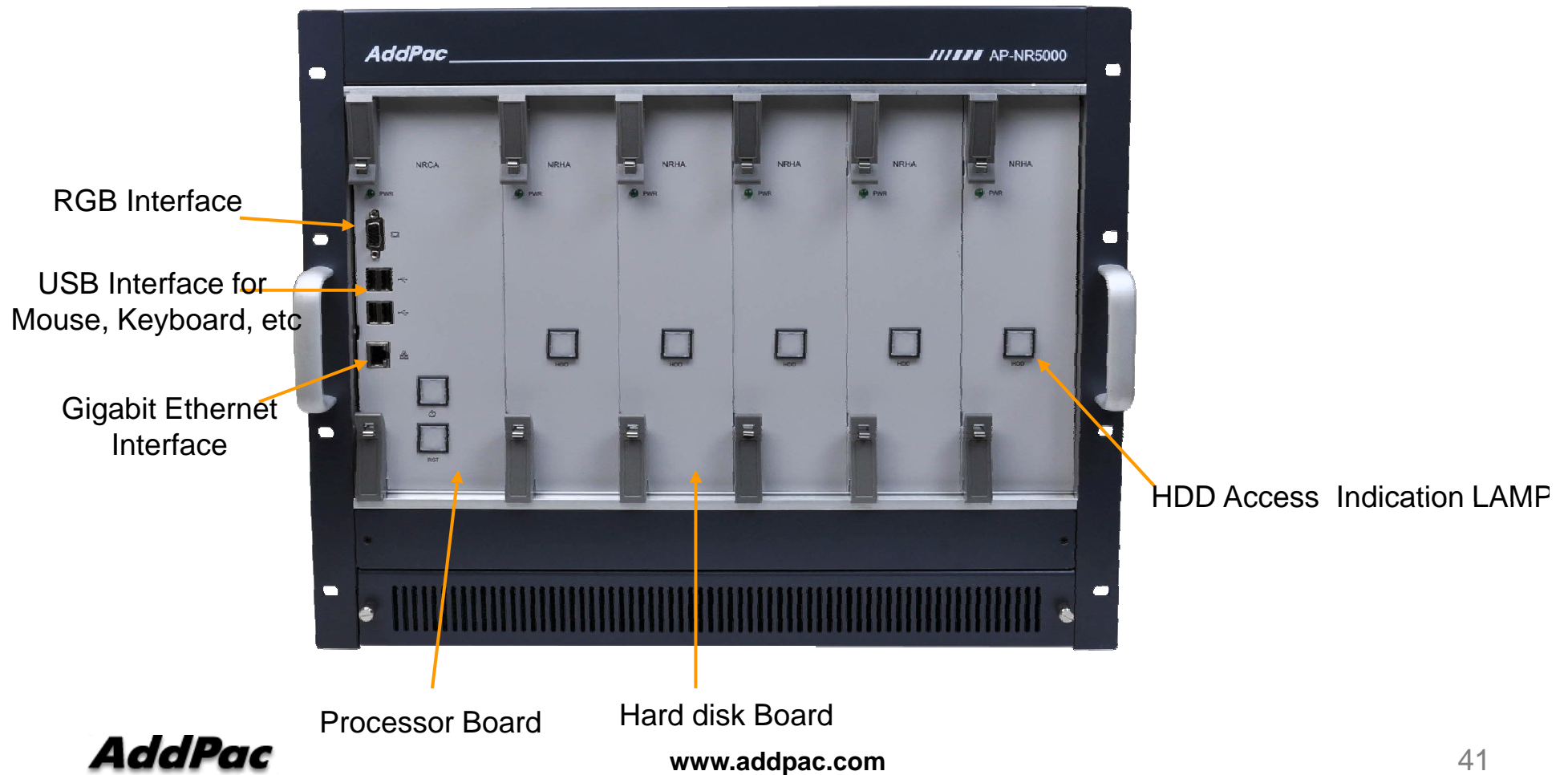
- High Performance Computing Power
- Main Processor Board
  - Network Interface
    - One(1) 10/100/1000Mbps Gigabit Ethernet
  - Video Output Interface
    - RGB Video Output
  - USB 2.0 Interfaces for Mouse, Keyboard, etc
- Hard Disk Board
  - Module Type Design
  - Up Five(5) Hard Disk Slots
  - 10~20 Tera HDD Capacity
- Power Supply
  - Dual Power Supply for Power Redundancy
  - Module Type Power Supply



# Hardware Specification

## AP-NR5000 Network Voice Recording Server

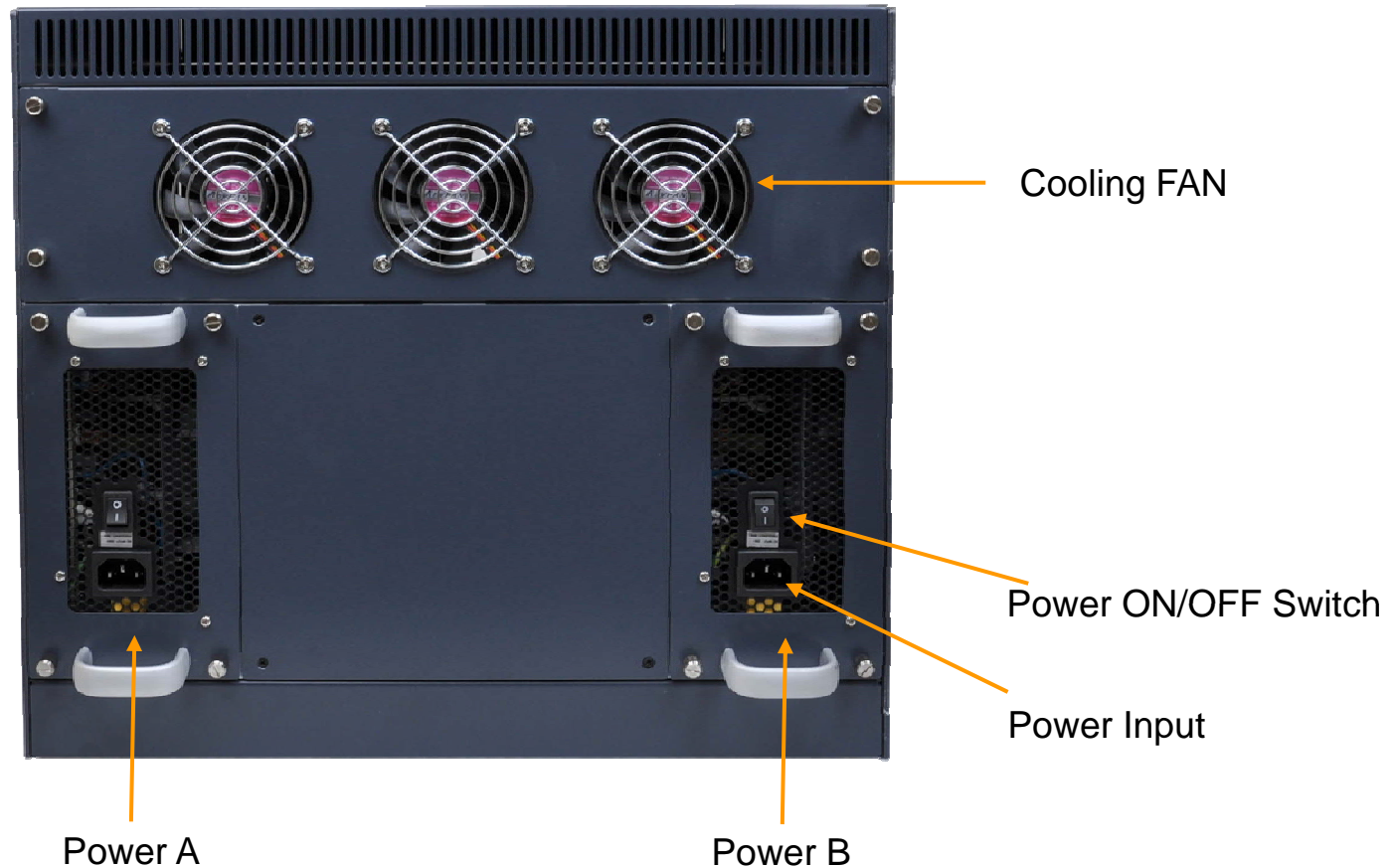
### AP-NR5000 Front Side



# Hardware Specification

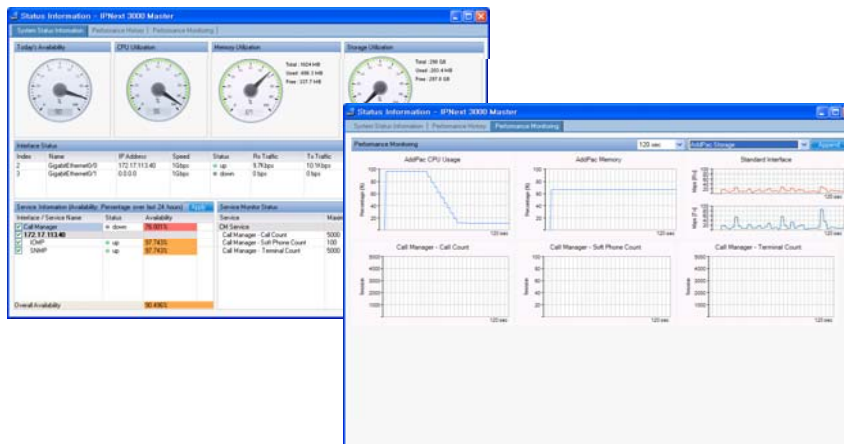
AP-NR5000 Network Voice Recoding Server

## AP-NR5000 Back Side



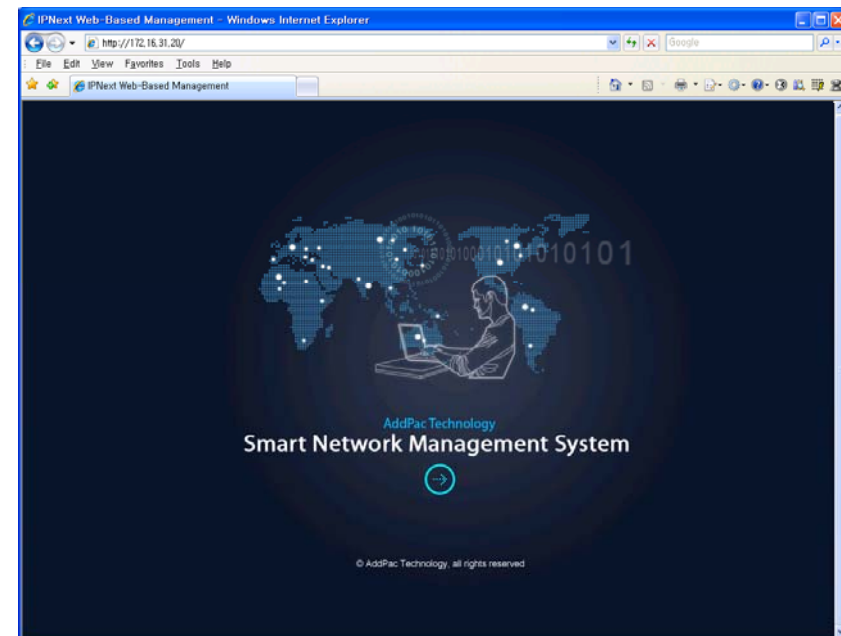
# Smart NMS

## Smart Network Management System for Video Phone



# Contents

- System Requirement
- Smart NMS Networking Diagram
- Web-based Management
- Network Resource Management
- Device Fault Management
- Device Fault History Management
- Device Status Information
- Notification Management
- Fault Statistics
- Model & Service Management



# System Requirement

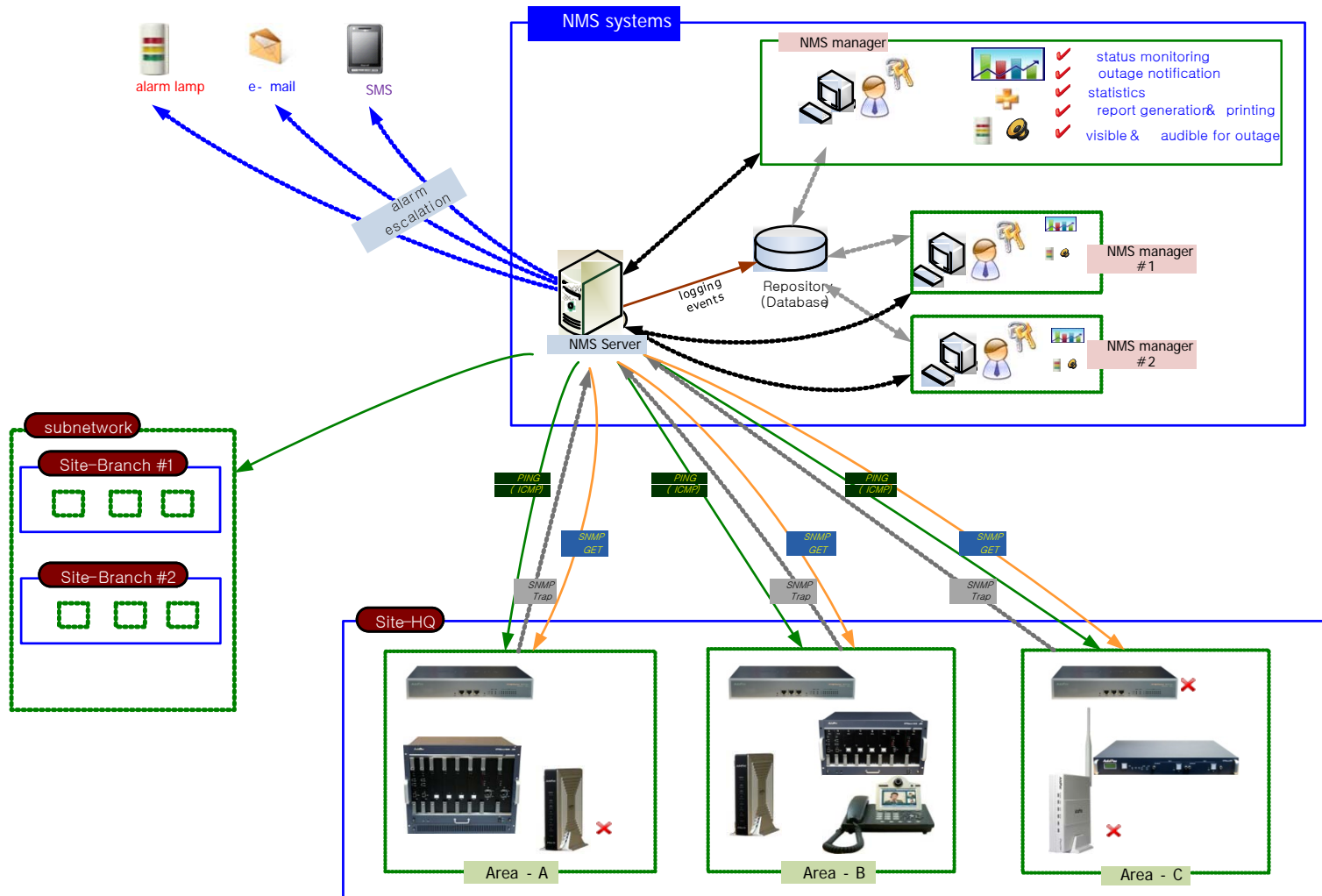
## NMS Server

- OS : RHEL (Redhat Enterprise Linux) 5.0 or higher
- CPU : Quad-Core 2.0 GHz / 1333MHz FSB 2x4 MB cache
- Physical Memory : 4 GB
- HDD : 300 G
- JRE (Java Runtime Environment) 1.5.1 or Higher
- Database : PostgreSQL 8.1.11

## NMS Client

- Windows XP, Vista, Windows Server 2000/2003
- Microsoft Internet Explorer 6.0 or higher

# NMS Networking Diagram



# Ex: Device Fault Management

Smart Network Management System - Windows Internet Explorer

http://172.16.31.20/smartnms.htm

NMS Account Configuration Monitoring Notification Fault Statistics View Help

Current Outage Devices [12] Site

Service Outages Device Monitoring - <All>

View Mode Large Small Refresh Import

display message icon when the device have a notification for event

device status matrix with several severity such as critical, major, minor

\* severity color

- 1) red : critical
- 2) orange : major
- 3) light blue : normal

Name	Service...	Availability
Branch AQ		
NMS Camera	6 of 12	48.994 %
NMS_IP_PBX...	3 of 3	0.000 %
Branch GX		
00_IVR_server	3 of 3	0.000 %
00_IVR_slave...	3 of 3	0.000 %
00_NR_server	1 of 2	98.015 %
00_PS_server	3 of 3	0.000 %
00_PS_slave...	2 of 3	32.703 %
IPNext 3000 ...	1 of 3	90.536 %
IPNext 3000 S...	1 of 3	90.584 %
UMS slave	3 of 3	0.000 %
UMS server(o...	3 of 3	0.000 %
Subnetwork #2		
Center		
NMS_SOHO_...	2 of 2	92.939 %

Total Monitoring Devices : 34

ACK ID	Send Time	Site	Device Name	IP Address	Service	Message
9525	4/10/2009 5:21:06 PM	/AddPac/Branch GX	00_NR_server	172.17.111.21	SNMP	인터페이스 172.17.111.21 (172.17.111.21)의 장비명 (00_NR_server)의 서비스 SNMP가 2009년 4월 10일 금요일 오후 5시 21분 06초에 실패함.
9502	4/10/2009 3:34:29 PM	/Subnetwork #2/Center	NMS_SOHO_PBX			device NMS_SOHO_PBX, all services are down
9495	4/10/2009 11:37:12 AM	/AddPac/Branch GX	IPNext 3000 Slave	172.17.113.41	Call Manager	interface 172.17.113.41 (172.17.113.41) device (IPNext 3000 Slave) service Call Manager 2009-4-10 11:37:12 failed
9494	4/10/2009 11:37:12 AM	/AddPac/Branch GX	IPNext 3000 Master	172.17.113.40	Call Manager	interface 172.17.113.40 (172.17.113.40) device (IPNext 3000 Master) service Call Manager 2009-4-10 11:37:12 failed
9418	4/9/2009 2:20:01 PM	/AddPac/Branch GX	00_IVR_server			device 00_IVR_server all services are down

Your Outstanding Notices [17] All Outstanding Notices [17]

4/10/2009 5:16:30 PM 172.16.31.20:5101 admin Version 1.2.3384

# Emergency Call IP Phone Series

# Thank you!

**AddPac Technology Co., Ltd.**  
Sales and Marketing

Phone +82.2.568.3848 (KOREA)

FAX +82.2.568.3847 (KOREA)

E-mail : [sales@addpac.com](mailto:sales@addpac.com)