

# AP-EIP60

## Emergency Call IP Phone

High Performance IP Phone Solution for Emergency Call



CCTV Interworking Signal Flow

**AddPac**

**AddPac Technology**

Sales and Marketing

[www.addpac.com](http://www.addpac.com)

# Contents

- Product Overview
- Hardware Specification
- Network Diagram
- Message Signal Flow



# Product Overview

## AP-EIP60 Emergency Call IP Phone

- High Performance Emergency Call IP Phone Solution
- Emergency Call IP Phone Solution for Outdoor Application
- Water Resistance Function Support
- Full Duplex Voice Communication
- One(1) 10/100Mbps Fast Ethernet
- PoE(Power over Ethernet) Support
- High Quality Speaker Phone Features
- SIP VoIP Signaling Stack Embedded
- Powerful Acoustic Echo Canceller Chip Embedded
- Powerful Network Protocols (PPPoE, DHCP, Static Routing, etc)
- Firmware Upgradeable Architecture
- Advanced Voice QoS Mechanism
- Die-Casting Steel Chassis

# Hardware Specification

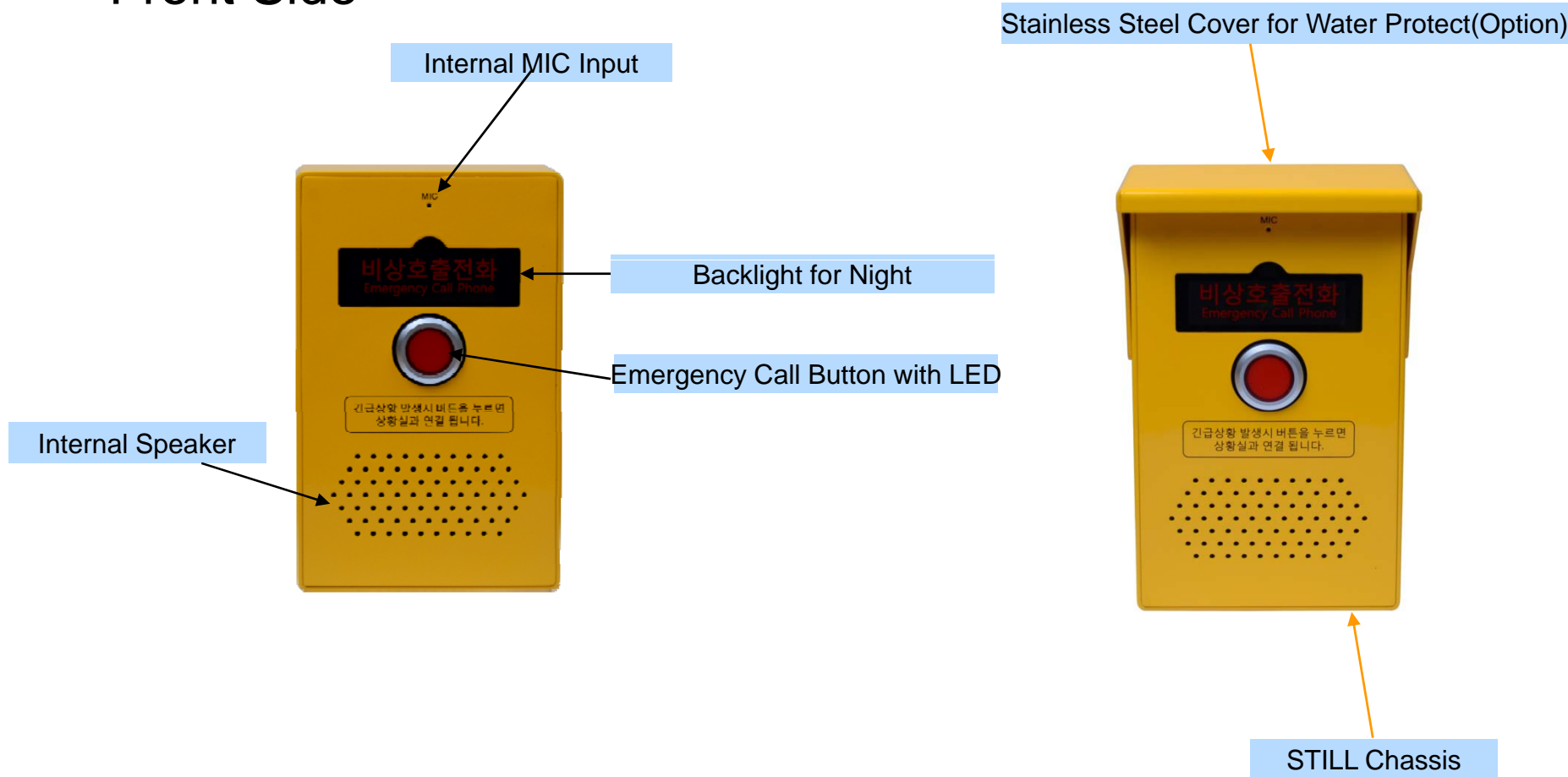
## AP-EIP60 Emergency IP Phone

- RISC+DSP Microprocessor Computing Power
- Audio and Voice Interface
  - Internal MIC
  - Internal Speaker
- Emergency Call Button & LAMP
- Network Interface
  - One(1) 10/100Mbps Fast Ethernet
- Power Supply
  - Power over Ethernet (Option)
  - External Power Adaptor
- Cable (LAN, Power) Outlet (Option : Bottom or Backside)
- Die-Casting Steel Chassis

# Hardware Specification

## AP-EIP60 Emergency IP Phone

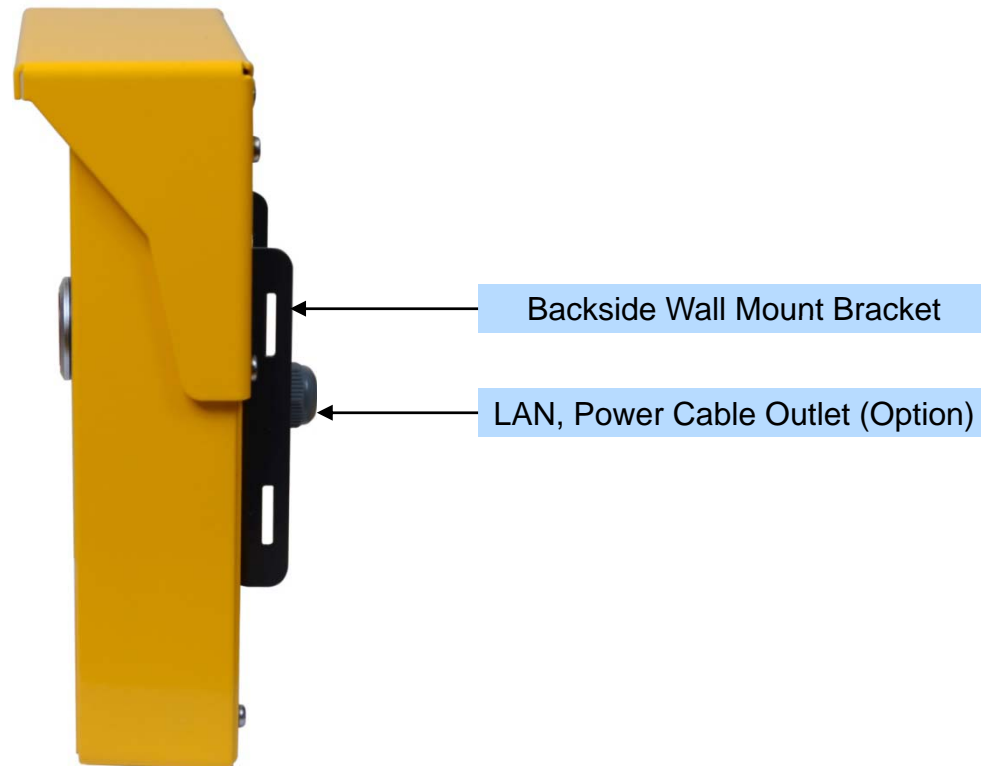
### Front Side



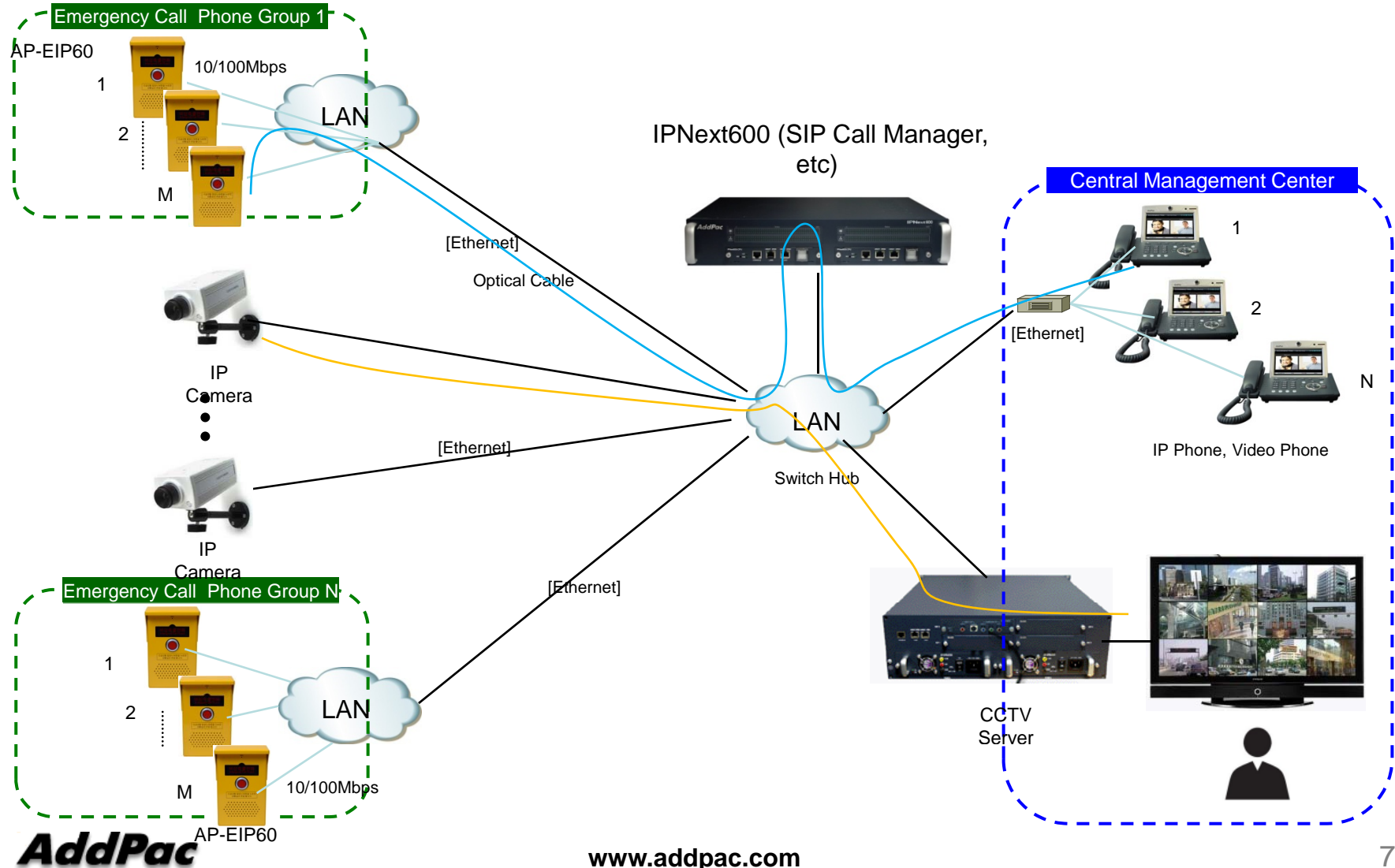
# Hardware Specification

AP-EIP60 Emergency IP Phone

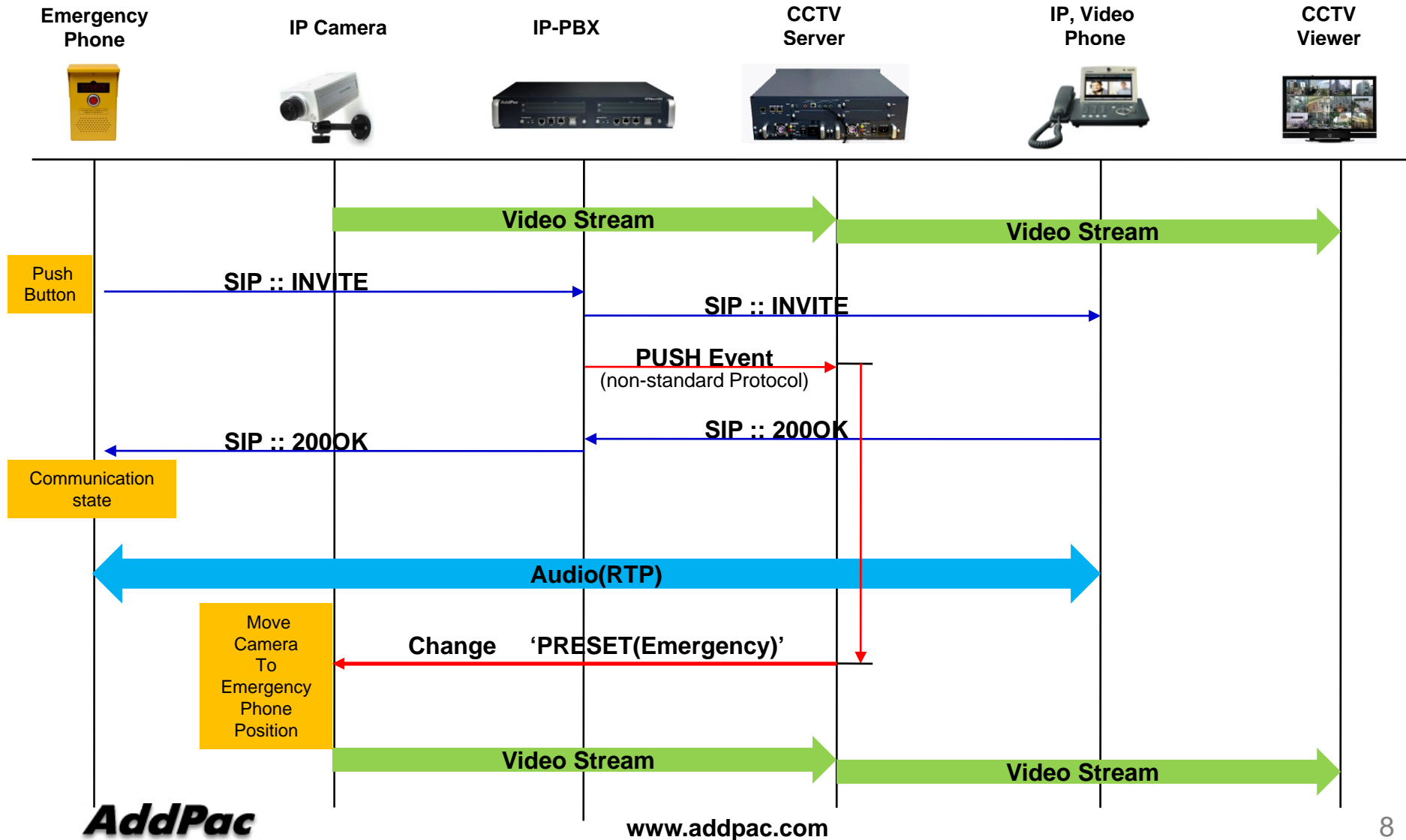
## Back Side



# Network Diagram

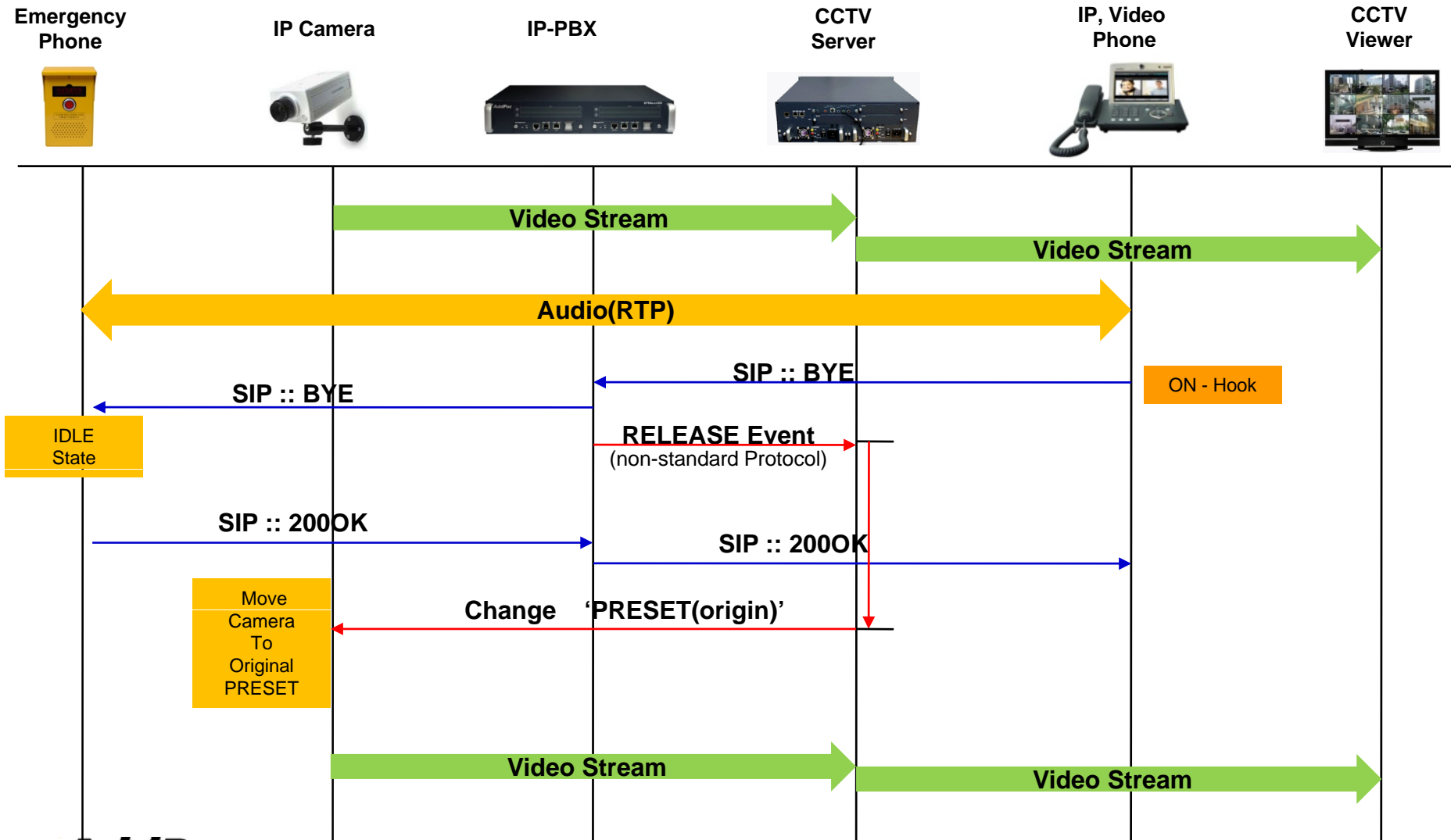


# Message Signal Flow (Emergency Call Start)





# Message Signal Flow (Emergency Call Release)





# Thank you!

**AddPac Technology Co., Ltd.**  
Sales and Marketing

Phone +82.2.568.3848 (KOREA)

FAX +82.2.568.3847 (KOREA)

E-mail [sales@addpac.com](mailto:sales@addpac.com)