

AP-EIP60

Emergency Call IP Phone

High Performance IP Phone Solution for Emergency Call



CCTV Interworking Signal Flow

AddPac

AddPac Technology

Sales and Marketing

www.addpac.com

Contents

- Product Overview
- Hardware Specification
- Network Diagram
- Message Signal Flow



Product Overview

AP-EIP60 Emergency Call IP Phone

- High Performance Emergency Call IP Phone Solution
- Emergency Call IP Phone Solution for Outdoor Application
- Water Resistance Function Support
- Full Duplex Voice Communication
- One(1) 10/100Mbps Fast Ethernet
- PoE(Power over Ethernet) Support
- High Quality Speaker Phone Features
- SIP VoIP Signaling Stack Embedded
- Powerful Acoustic Echo Canceller Chip Embedded
- Powerful Network Protocols (PPPoE, DHCP, Static Routing, etc)
- Firmware Upgradeable Architecture
- Advanced Voice QoS Mechanism
- Die-Casting STILL Chassis

Hardware Specification

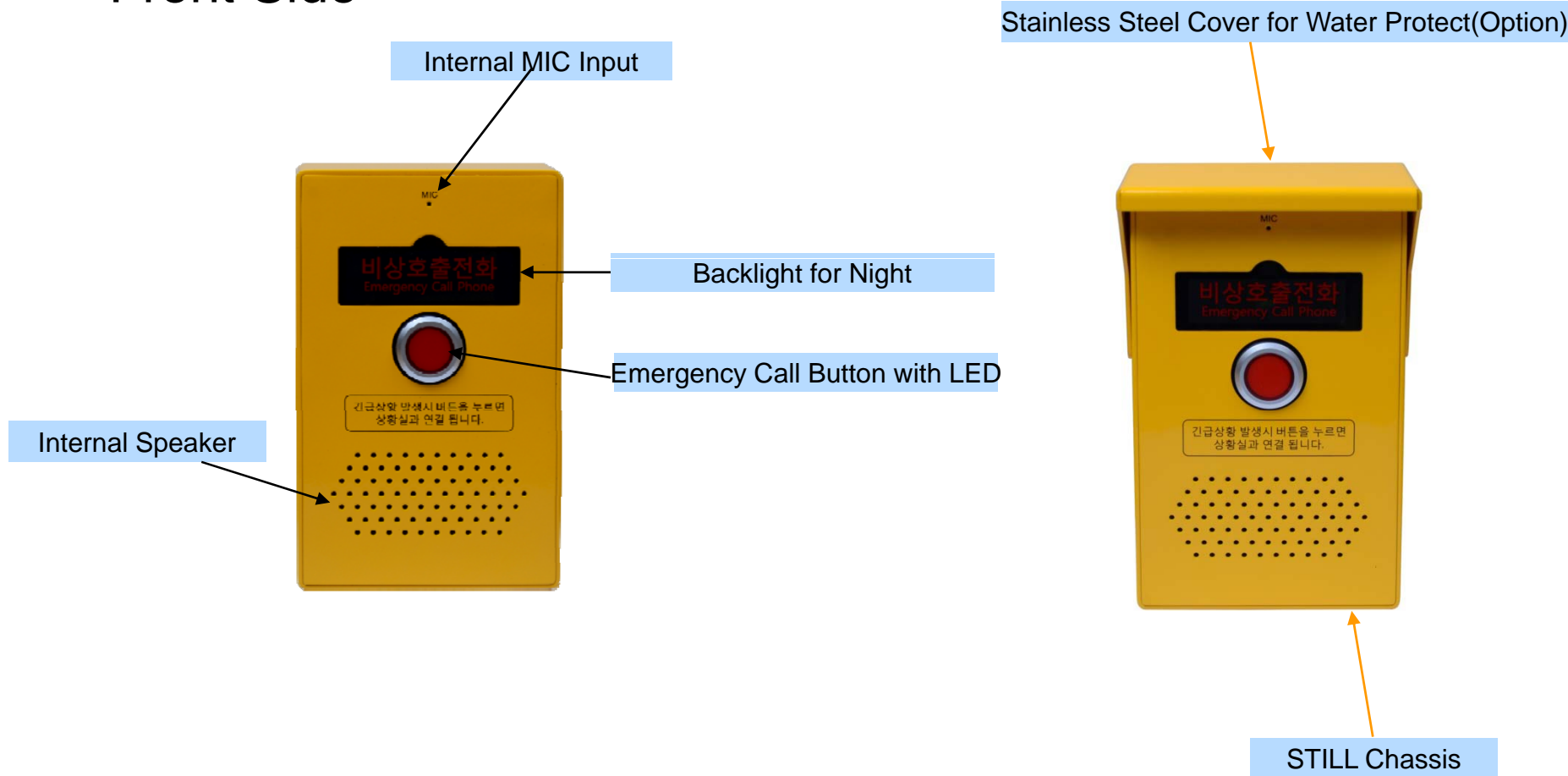
AP-EIP60 Emergency IP Phone

- RISC+DSP Microprocessor Computing Power
- Audio and Voice Interface
 - Internal MIC
 - Internal Speaker
- Emergency Call Button & LAMP
- Network Interface
 - One(1) 10/100Mbps Fast Ethernet
- Power Supply
 - Power over Ethernet (Option)
 - External Power Adaptor
- Cable (LAN, Power) Outlet (Option : Bottom or Backside)
- Die-Casting STILL Chassis

Hardware Specification

AP-EIP60 Emergency IP Phone

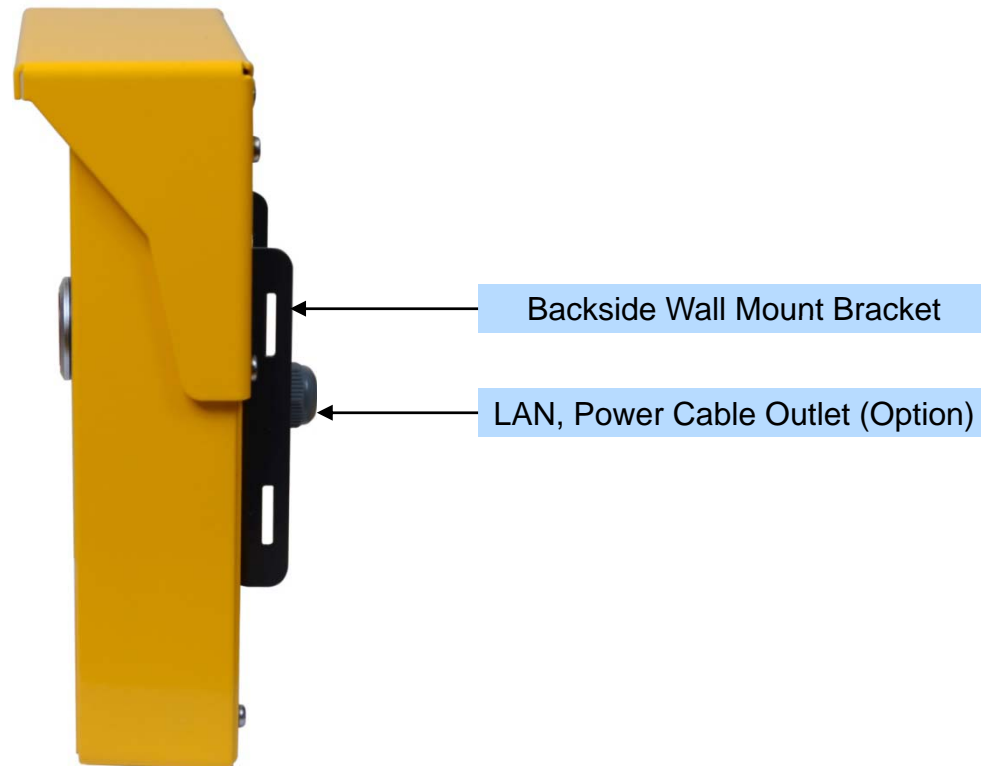
Front Side



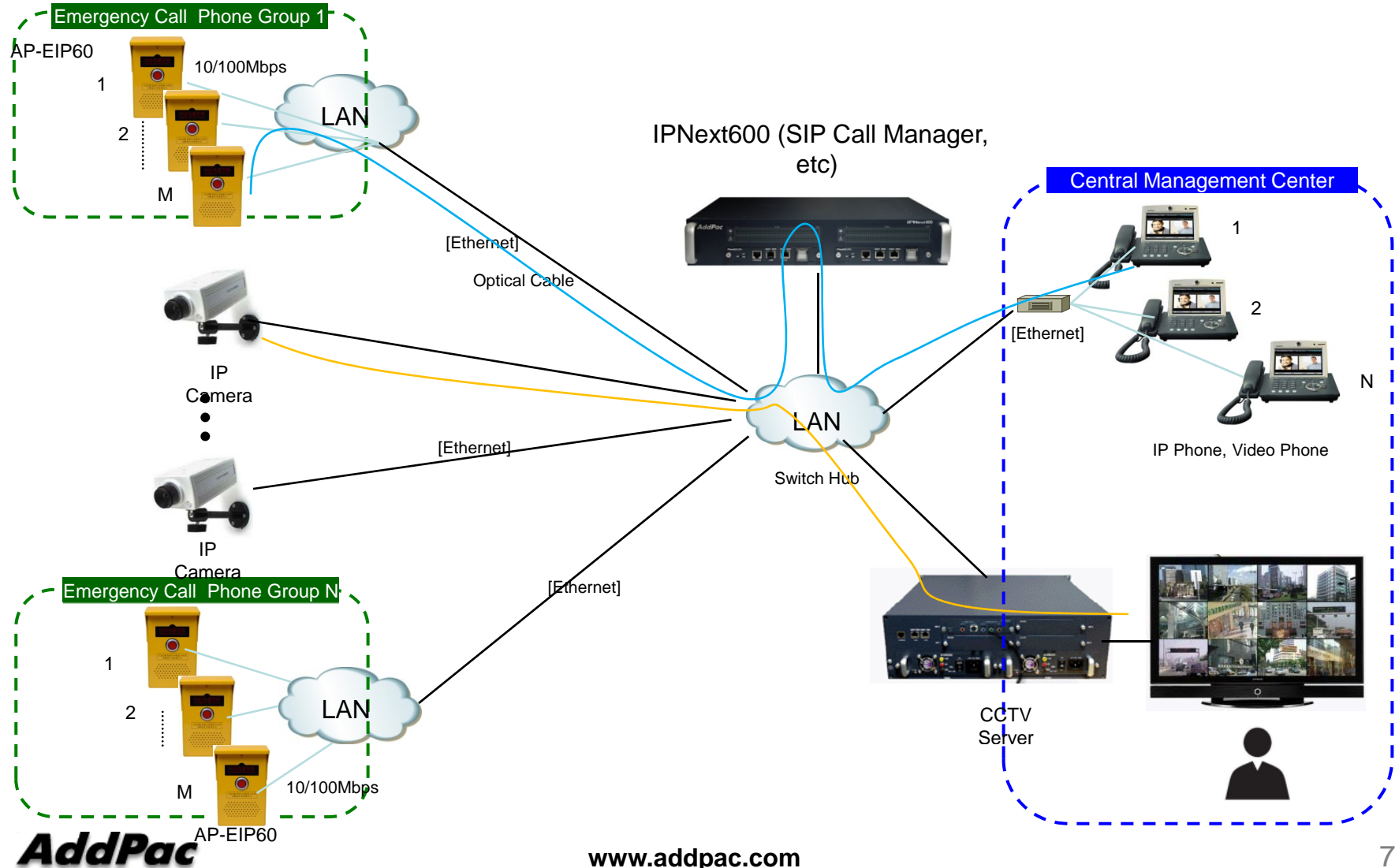
Hardware Specification

AP-EIP60 Emergency IP Phone

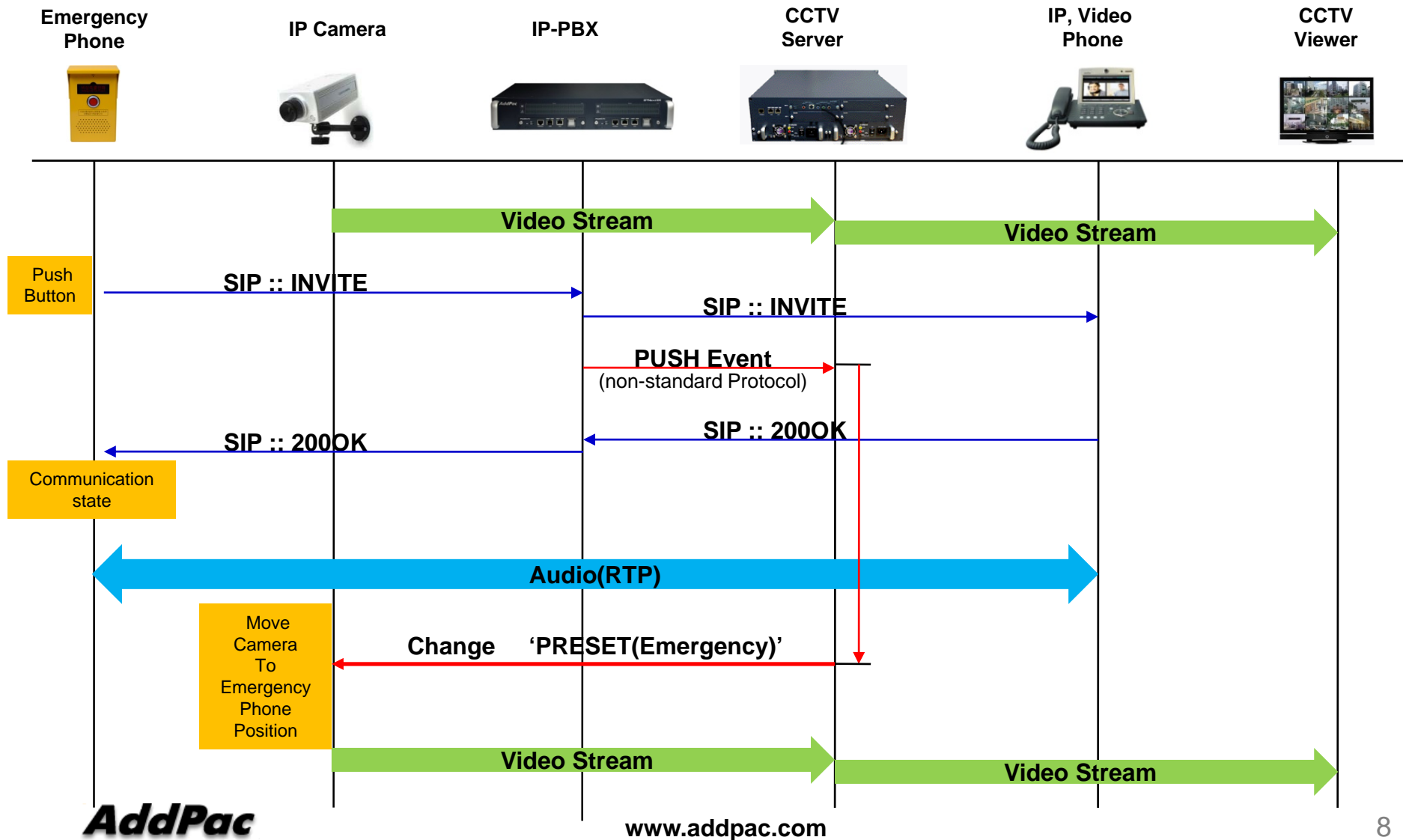
Back Side



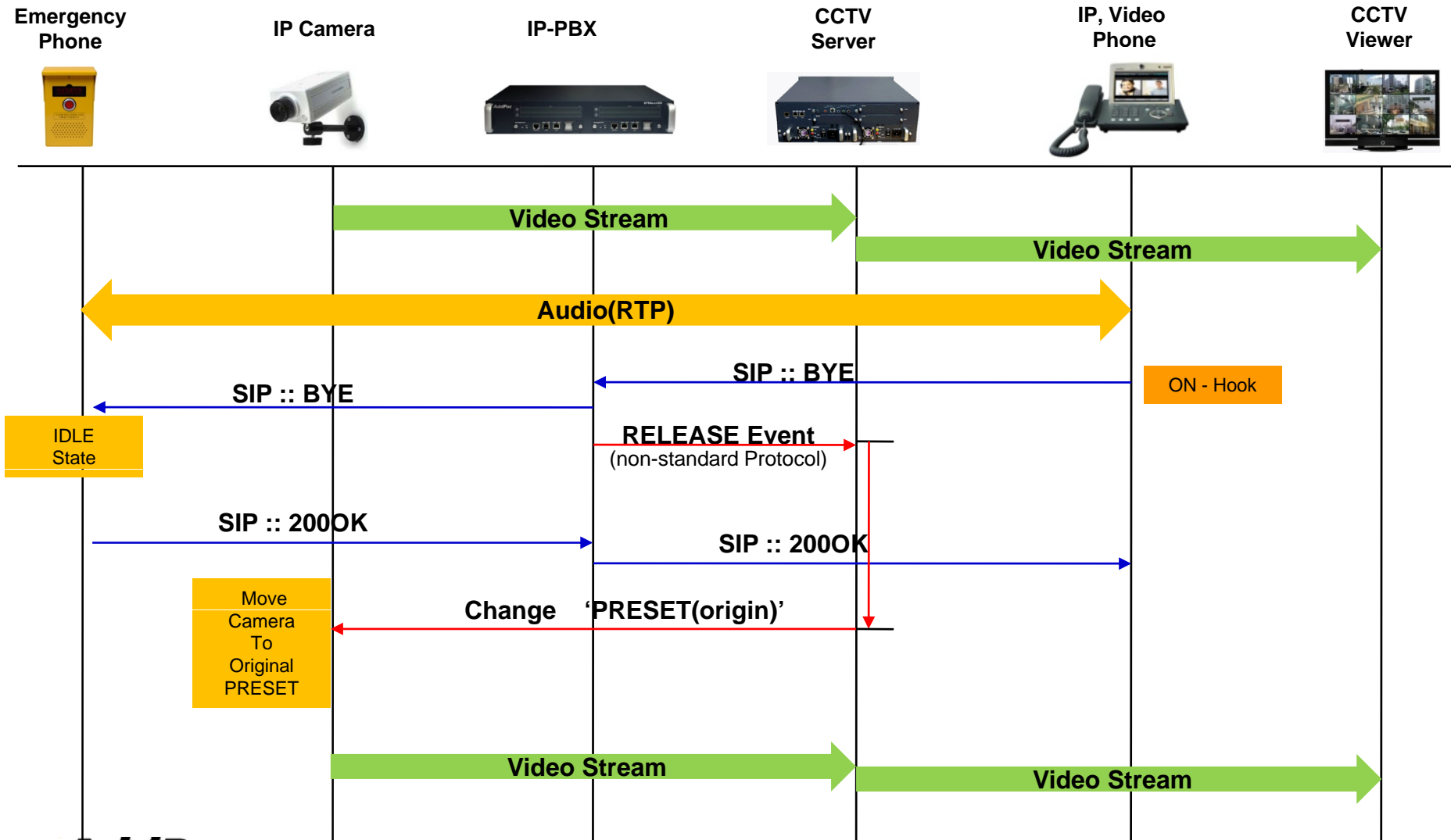
Network Diagram



Message Signal Flow (Emergency Call Start)



Message Signal Flow (Emergency Call Release)





Thank you!

AddPac Technology Co., Ltd.
Sales and Marketing

Phone +82.2.568.3848 (KOREA)

FAX +82.2.568.3847 (KOREA)

E-mail sales@addpac.com