

Gigabit Ethernet IP Phone Solution



AddPac

AddPac Technology

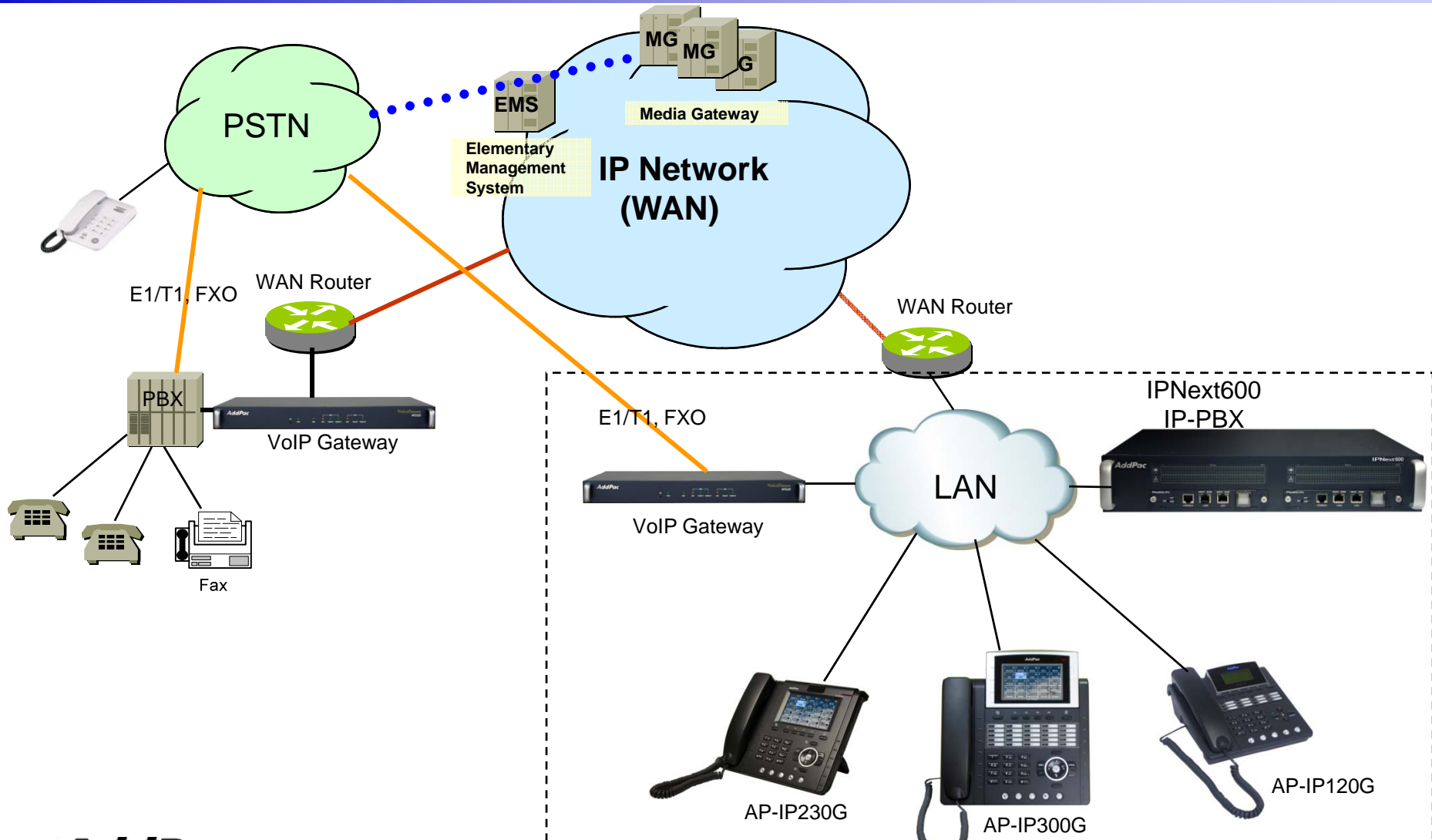
Sales and Marketing

www.addpac.com



Contents

- Gigabit Ethernet IP Phone Service Diagram
- Gigabit Ethernet IP Phone Comparison Table
- Gigabit Ethernet IP Phone Series
 - AP-IP300G
 - AP-IP230G
 - AP-IP120G
- NMS (Network Management System) for IP Phone

Gigabit Ethernet IP Phone Service Diagram



Gigabit Ethernet IP Phone Comparison Table

	AP-IP300	AP-IP230	AP-IP120
			
LCD Size	4.3 Inch Color LCD	5 Inch Color LCD	4 Text Line Graphic LCD
Touch Screen	N/A	Support	N/A
Speed-Dial Keys	25 Key with Presence LED	Touch Screen based 25 Keys	12 Key with Presence LED
Voice Codec	G.711/G.726/ G.729/G.723	G.711/G.726/ G.729/G.723	G.711/G.726/ G.729/G.723
Signaling	H.323/SIP	H.323/SIP	H.323/SIP
3-Party Conversation	Support	Support	Support
Gigabit Ethernet Port	2	2	2
PoE(Optional)	Support	Support	Support
FXO(Optional)	Support	Support	Support



AP-IP300G

Gigabit Ethernet IP Phone

Main Features

AP-IP300G Premium IP Phone

- 4.3 Inch Color LCD Display
- 25 Speed-Dial Keys with User Presence LED
- 4 Soft Key for Call Control
- Various Function Keys
- H.323/SIP Concurrent VoIP Signaling Stack Embedded
- High-performance Voice Codec Support
 - G.711/G.726/G.729/G.723, etc
- **Two(2) 10/100/1000Mbps Gigabit Ethernet**
- High Quality Speaker Phone Features (Acoustic Echo Canceller)
- Powerful Network Protocols (PPPoE, DHCP, Static Routing, etc)
- Firmware Upgradeable Architecture
- SNMS (Smart Network Management System) for Large Scale Deployment
- Advanced Voice QoS Mechanism

Hardware Specification

AP-IP300G Premium IP Phone

RISC
CPU

High-end
DSP

- RISC Microprocessor Computing Power
- 4.3 Color LCD
- 25 Speed Dial Keys with User Presence LED
- High-end Programmable DSP Hardware Architecture
- High quality Audio and Voice Interface
 - Stereo Audio Input & Output Connector
- Network Interface
 - Two(2) 10/100/1000Mbps Gigabit Ethernet
 - One(1) USB 1.0 Interface
- PSTN Interface
 - One(1) FXO(RJ11) interface
- Power Supply
 - *External DC adaptor (5V)*
 - *Power Switch*
 - *PoE (Power over Ethernet)*

Hardware Specification

AP-IP300G Premium IP Phone

RISC
CPU

High-end
DSP

Hardware Specification



AddPac

www.addpac.com

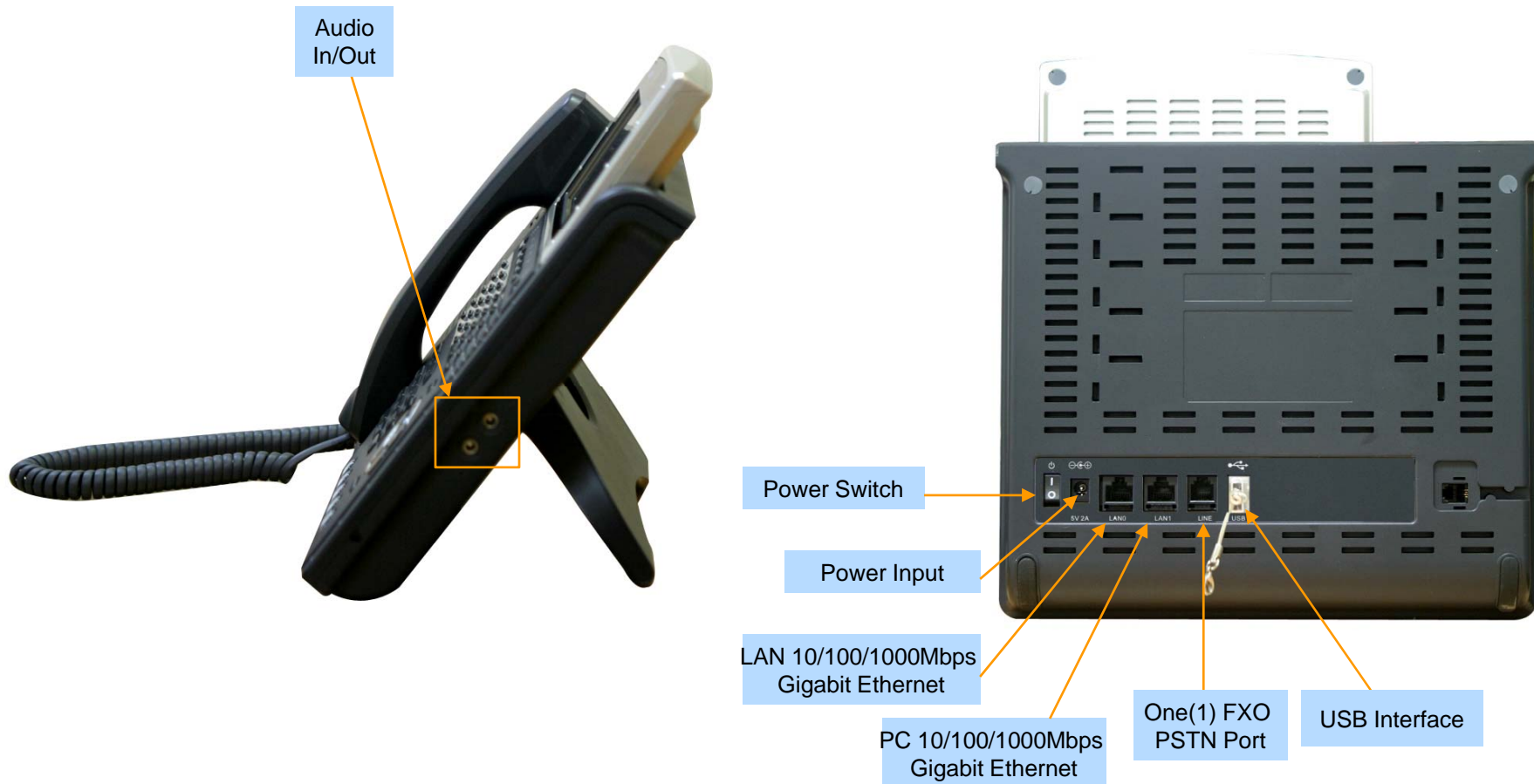
Hardware Specification


AP-IP300 Premium IP Phone

RISC
CPU

High-end
DSP

Hardware Specification





AP-IP230G

Gigabit Ethernet IP Phone

Main Features

AP-IP230G Premium IP Phone

- 5 Inch Color LCD Display, Touch Screen
- Touch Screen based 25 Speed-Dial Keys
- 4 Soft Key for Call Control
- Various Function Keys
- H.323/SIP Concurrent VoIP Signaling Stack Embedded
- High-performance Voice Codec Support
 - G.711/G.726/G.729/G.723, etc
- Two(2) 10/100/1000Mbps Gigabit Ethernet
- High Quality Speaker Phone Features (Acoustic Echo Canceller)
- Powerful Network Protocols (PPPoE, DHCP, Static Routing, etc)
- Firmware Upgradeable Architecture
- SNMS (Smart Network Management System) for Large Scale Deployment
- Advanced Voice QoS Mechanism

Hardware Specification

AP-IP230G Premium IP Phone

RISC
CPU

High-end
DSP

- RISC Microprocessor Computing Power
- 5 Inch Color LCD with Touch Screen
- High-end Programmable DSP Hardware Architecture
- High quality Audio and Voice Interface
 - Stereo Audio Input & Output Connector
- Network Interface
 - Two(2) 10/100/1000Mbps Gigabit Ethernet
 - One(1) USB 1.0 Interface
- PSTN Interface
 - One(1) FXO(RJ11) interface
- Power Supply
 - *External DC adaptor (5V)*
 - *Power Switch*
 - *PoE (Power over Ethernet)*

Hardware Specification

AP-IP230G Premium IP Phone

RISC
CPU

High-end
DSP

Hardware Specification

5 Inch
LCD with Touch
Screen



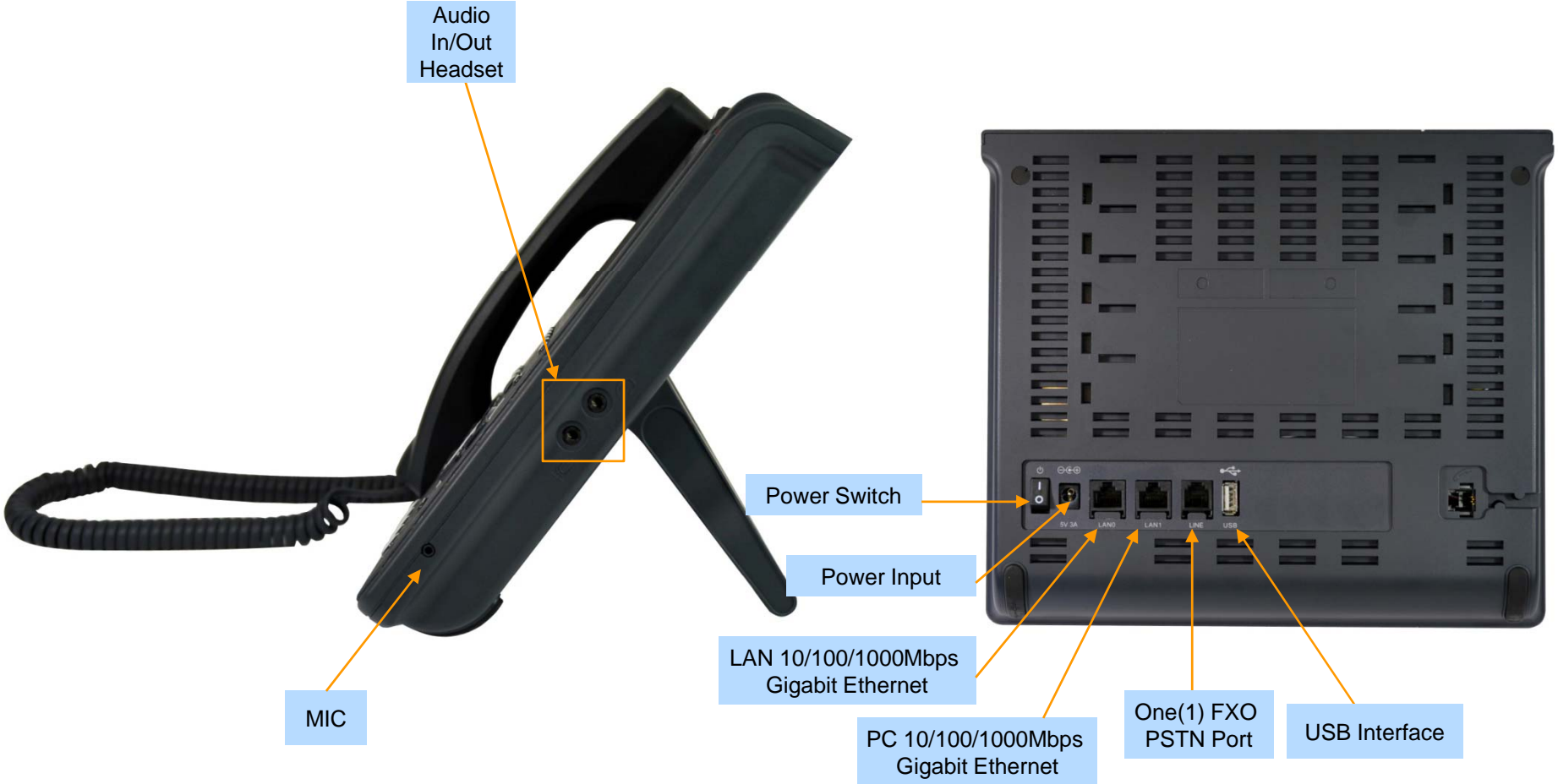
Hardware Specification

AP-IP230G Premium IP Phone

RISC
CPU

High-end
DSP

Hardware Specification





AP-IP120G

Gigabit Ethernet IP Phone

Main Features

AP-IP120G IP Phone

- 4 Text Line Graphic LCD Display
- 12 Speed-Dial Keys with User Presence LED
- 4 Soft Key for Call Control
- Various Function Keys
- H.323/SIP Concurrent VoIP Signaling Stack Embedded
- High-performance Voice Codec Support
 - G.711/G.726/G.729/G.723, etc
- Two(2) 10/100/1000Mbps Gigabit Ethernet
- High Quality Speaker Phone Features (Acoustic Echo Canceller)
- Powerful Network Protocols (PPPoE, DHCP, Static Routing, etc)
- Firmware Upgradeable Architecture
- SNMS (Smart Network Management System) for Large Scale Deployment
- Advanced Voice QoS Mechanism

Hardware Specification

AP-IP120G IP Phone

RISC
CPU

High-end
DSP

- RISC Microprocessor Computing Power
- 4 Text Line Graphic LCD
- Navigation Key for Menu Search
- High-end Programmable DSP Hardware Architecture
- High quality Audio and Voice Interface
 - Stereo Audio Input & Output Connector
- Network Interface
 - Two(2) 10/100/1000Mbps Gigabit Ethernet
- PSTN Interface
 - One(1) FXO(RJ11) interface
- Power Supply
 - *External DC adaptor (5V)*
 - *PoE (Power over Ethernet)*

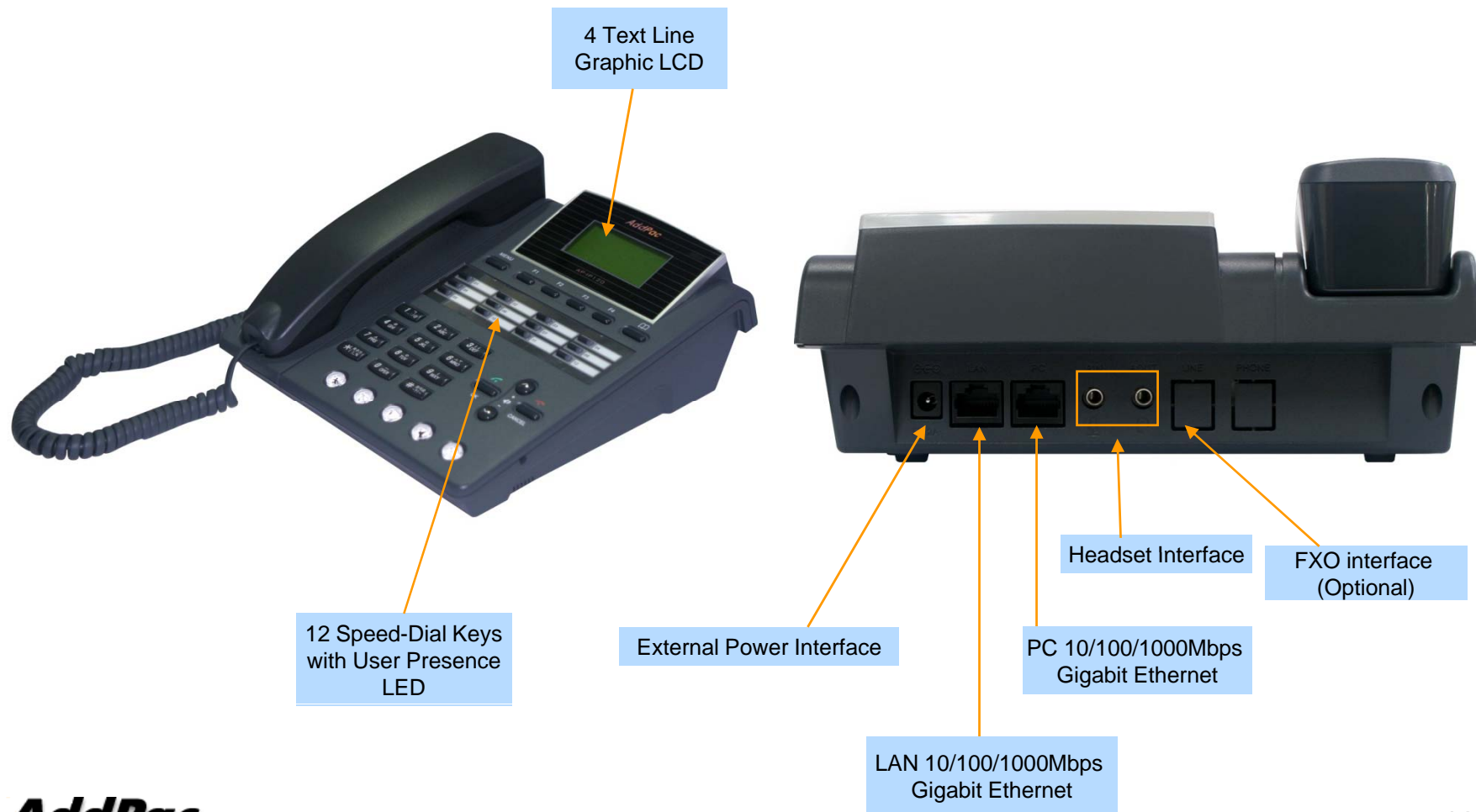
Hardware Specification

AP-IP120G IP Phone

RISC
CPU

High-end
DSP

Hardware Specification

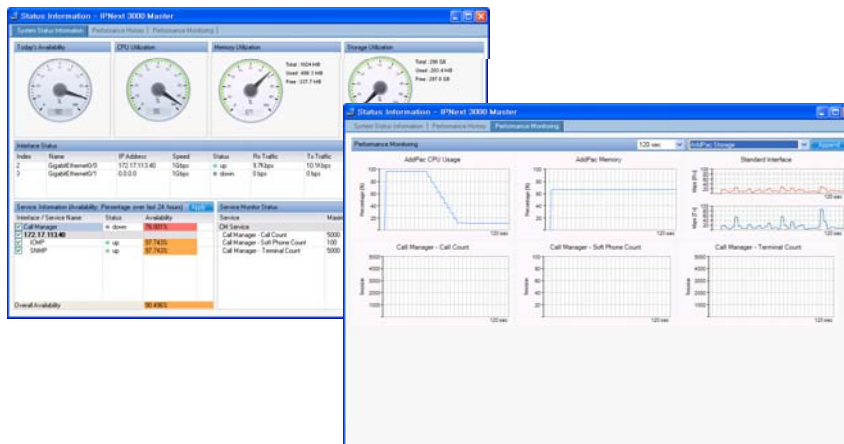


AddPac

www.addpac.com

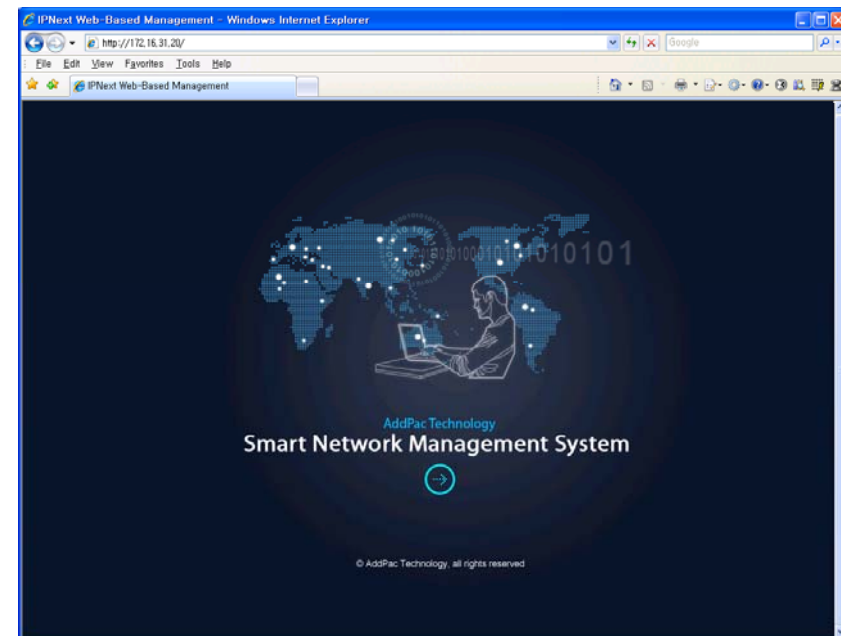
Smart NMS

Smart Network Management System for IP Phone



Contents

- System Requirement
- Smart NMS Networking Diagram
- Web-based Management
- Network Resource Management
- Device Fault Management
- Device Fault History Management
- Device Status Information
- Notification Management
- Fault Statistics
- Model & Service Management



System Requirement

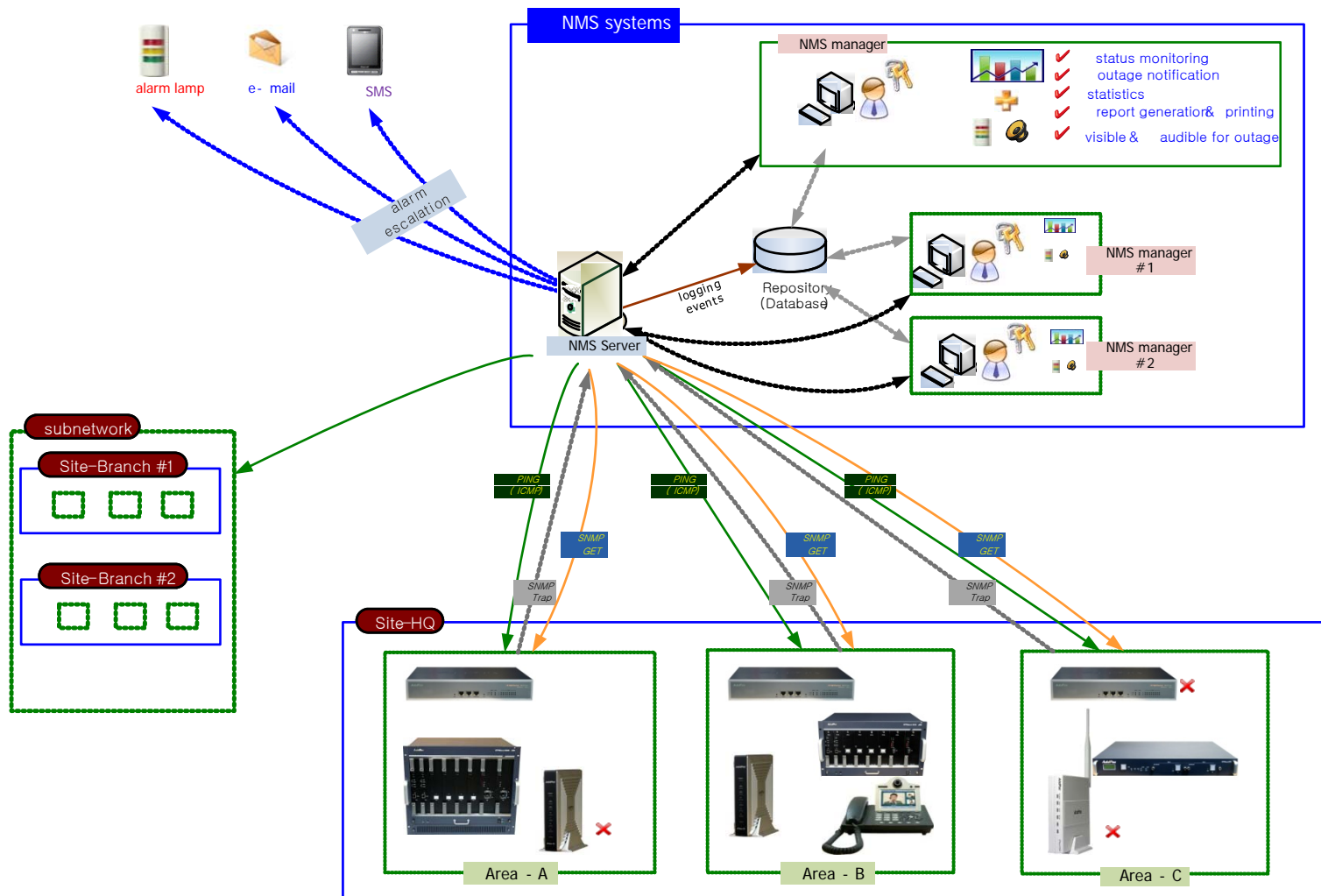
NMS Server

- OS : RHEL (Redhat Enterprise Linux) 5.0 or higher
- CPU : Quad-Core 2.0 GHz / 1333MHz FSB 2x4 MB cache
- Physical Memory : 4 GB
- HDD : 300 G
- JRE (Java Runtime Environment) 1.5.1 or Higher
- Database : PostgreSQL 8.1.11

NMS Client

- Windows XP, Vista, Windows Server 2000/2003
- Microsoft Internet Explorer 6.0 or higher

NMS Networking Diagram



Ex: Device Fault Management

The screenshot displays the Smart Network Management System (NMS) interface. The main area shows a grid of device monitoring cards for various servers and network devices. Each card displays the device name, IP address, and service status. A red box highlights a message icon on the '00_IVR_server' card, with a callout stating: "display message icon when the device have a notification for event".

On the left, a device status matrix is visible, showing columns for Name, Service, and Availability. A red box points to this matrix with the text: "device status matrix with several severity such as critical, major, minor". Below this, a legend defines the severity colors:

- * severity color
- 1) red : critical
- 2) orange : major
- 3) light blue : normal

The bottom section of the interface shows a list of messages. A red box highlights a message for 'NMS_IP_PBX_31,13' with the following details:

- +Model: IPNext200
- +IP Address: 172.16.31.13
- +Severity: Critical
- +Call Manager - Call Count Maximum: 200 Session: 0
- +CPU Utilization Usage: 0%
- +Memory Utilization Total: 131072 Used: 0
- +Storage Utilization Total: 78104896 Used: 420096

Gigabit Ethernet IP Phone Series

Thank you!

AddPac Technology Co., Ltd.
Sales and Marketing

Phone +82.2.568.3848 (KOREA)

FAX +82.2.568.3847 (KOREA)

E-mail : sales@addpac.com