

AP-NRC70

Network RFID Controller

High Performance Network RFID Controller Solution



Product Overview

(Without notice, following described technical spec. can be changed)

AddPac

AddPac Technology

Sales and Marketing

www.addpac.com

Contents

- Product Overview
- Product Highlights
- Hardware Specification
- Software Service
- Smart Web Manager
- Application Area
- Ordering Information



Product Overview

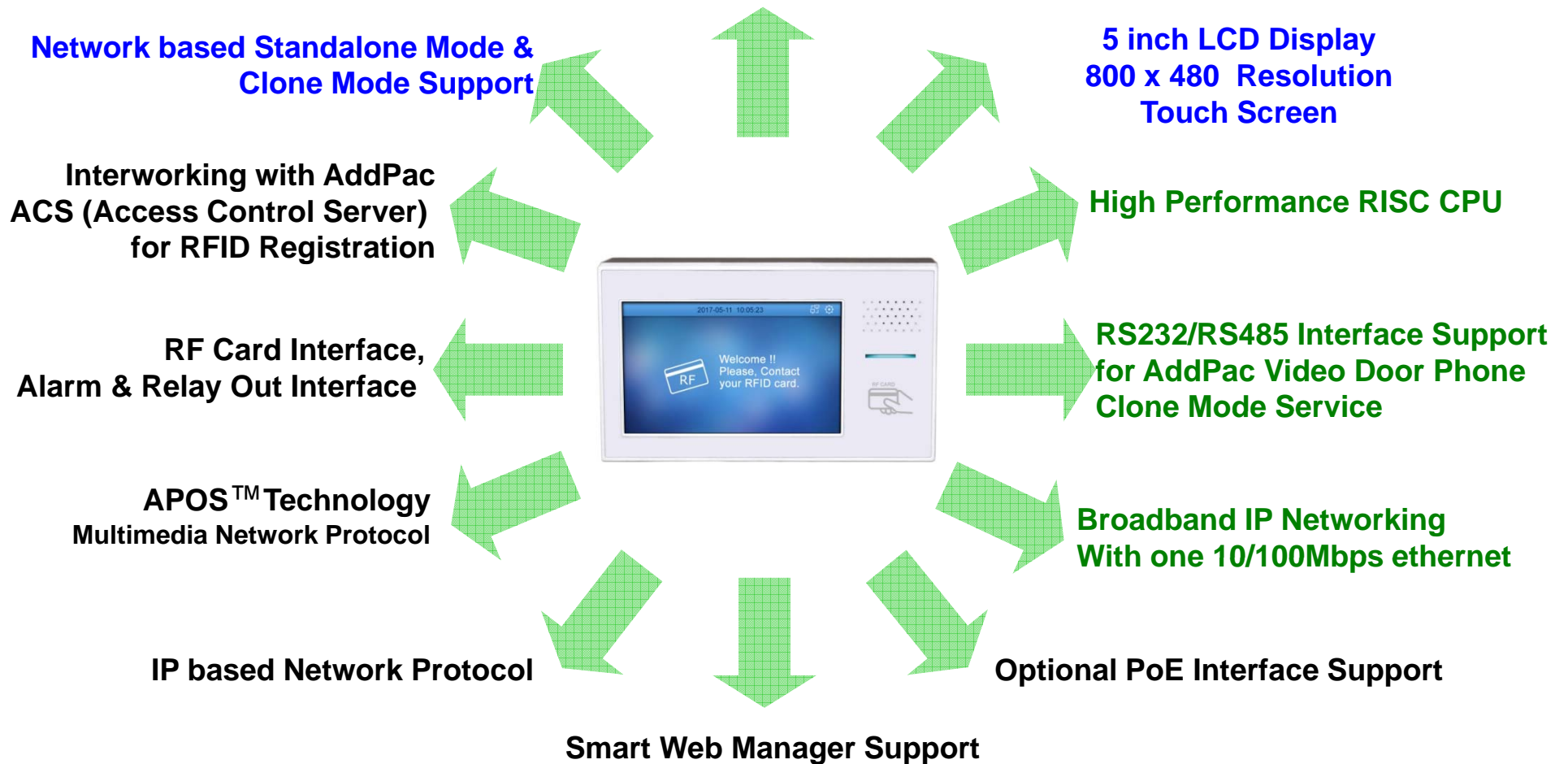
AP-NRC70 Network RFID Controller

- High Performance Network RFID Controller Solution : Standalone Mode
- RS232/RS485 Interface Support for AddPac IP Video Door Phone Interworking : Clone Mode
- Interworking with AddPac ACS(Access Control Server) for RFID Registration
- Internal Speaker
- High Quality 5inch LCD, 800x480 LCD Display Resolution
- One(1) 10/100Mbps Fast Ethernet
- PoE(Power over Ethernet) Support (Option)
- Powerful Network Protocols (PPPoE, DHCP, Static Routing, etc)
- Firmware Upgradeable Architecture
- Advanced Voice QoS Mechanism

Product Highlights

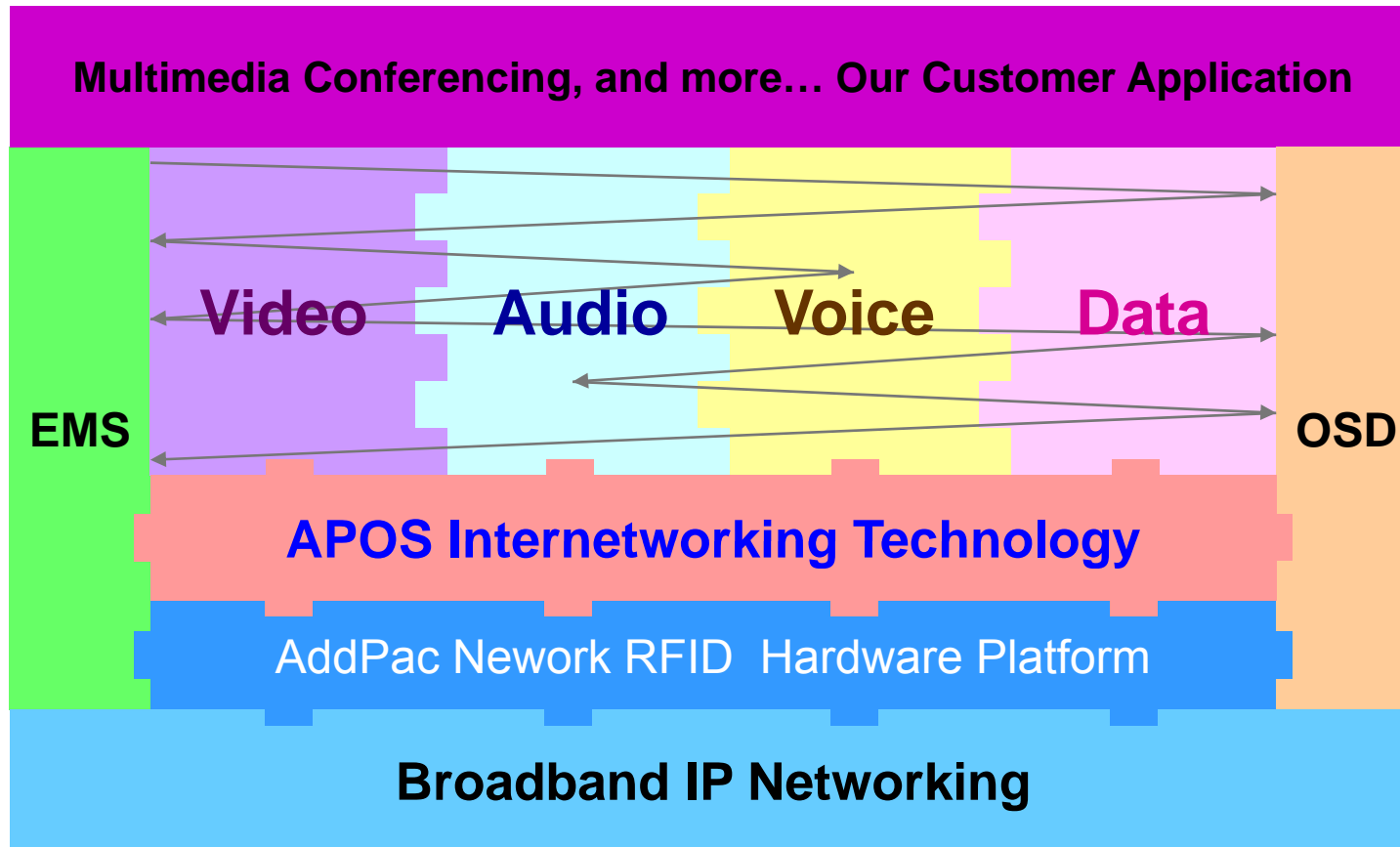
AP-NRC70 Network RFID Controller

Network based RFID System



Multimedia Service

AP-NRC70 Network RFID Controller



- APOS : AddPac Internetworking Operating System
- OSD : On- Screen Display
- EMS : Element Management System

Hardware Specification

AP-NRC70 Network RFID Controller

RISC
CPU

- RISC Microprocessor Computing Power
- Audio and Voice Interface
 - Internal Speaker
- TFT Color LCD Interface
 - 5inch LCD, 800 x 480 Video Resolution
- Network Interface
 - One(1) 10/100Mbps Fast Ethernet
- RF Card Interface
- Alarm & Relay Out Interface (door open, etc)
- RS232/RS485 Interface
- Power Supply
 - Power over Ethernet (Option)
 - External Power Supply

Hardware Specification

AP-NRC70 Network RFID Controller

RISC
CPU

- **LCD Controller**
 - One-Chip Solution for TFT-LCD
 - Hardware On-Screen Display (OSD)
 - Support resolution up to 240xRGBx320
 - Up to 24-bit RGB888 Digital Interface
 - Resize Function (x 1/16, x8)
 - BT.60/BT.66 Digital YCbCr 4:2:2(8-/16-bit) Interface
- **Speaker**
 - Impedance : 8 +/-15%ohm at 1kHz, 1.0 Vrms
 - Sound Pressure : 90 +/- 3dB at 0.1W/10 CM
at 800Hz, 1.0kHz, 1.2kHz, 1.5kHz
 - Resonance Level : 550Hz +/- 20%Hz at Fo Hz, 1.0Vrms
 - Frequency Range : Fo Hz ~20kHz
 - Input Power : Normal : 1.0 W, Max : 2.0W
- **PoE(Power over Ethernet)**
 - IEEE802.3af compliant
 - Input voltage range 36V to 57V
 - Short-circuit Protection

Hardware Specification

AP-NRC70 Network RFID Controller

RISC
CPU

- RF Card Sensor
 - Protocol Supported
 - ISO14443A/B all bit rates
 - > 106,212,424 and 848 kbps
 - Compatible to MiFare Classic
 - ISO15693 all modes
 - > 1.65/6.6 & 26.5 kbps
 - > Uplink 1 & 2 sub-carrier
 - Receiver
 - Rx Sensitivity down to 1mVrms
 - Rx Automatic Gain Control
 - Accept external baseband signal from external circuitry for frame level processing
 - Integrated signal strength indicator (SSI)
 - On-Chip Framing handler for supported standard
 - Transmitter
 - Typical proximity operating distance up to 100mm.
 - Software configurable modulation index
 - Maximum driving current up to 200 mA/PIN @ 5V
 - Accept external baseband signal for RF modulation
 - Wide Transmitter driver supply range from 2.7~7.0V



RF Card Sensor

Hardware Specification

AP-NRC70 Network RFID Controller

RISC
CPU

Front Side



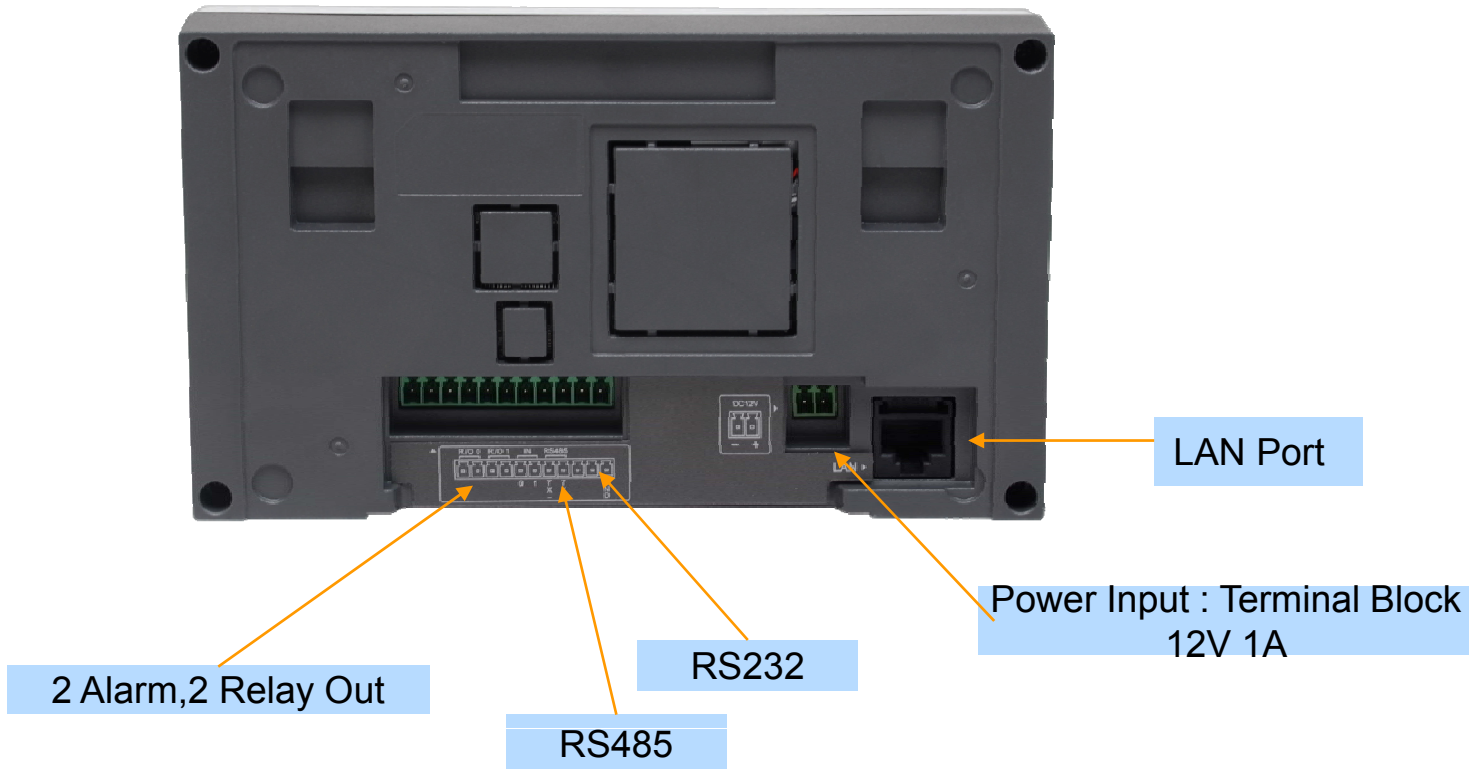
TFT Color LCD : 5inch LCD, 800 x 480 Video Resolution

Hardware Specification

AP-NRC70 Network RFID Controller



Back Side



Hardware Specification

AP-NRC70 Network RFID Controller

RISC
CPU

High-end
DSP

Power Supply

Terminal Block



12V 1A Power Adaptor

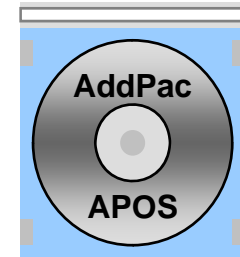
Example



Software Service

AP-NRC70 Network RFID Controller

- Built-in AddPac APOS Internetworking Software
 - Scalability, Functionality, and Stability Features
- Firmware Upgradeable DSP Architecture
- Network RFID Control Function Support
- RS232/RS485 based RFID Control Function Support
 - : AddPac Video Door Phone Clone Mode Service
- Industry Standard IP based Network Protocol Features





Smart Web Manager (Example)

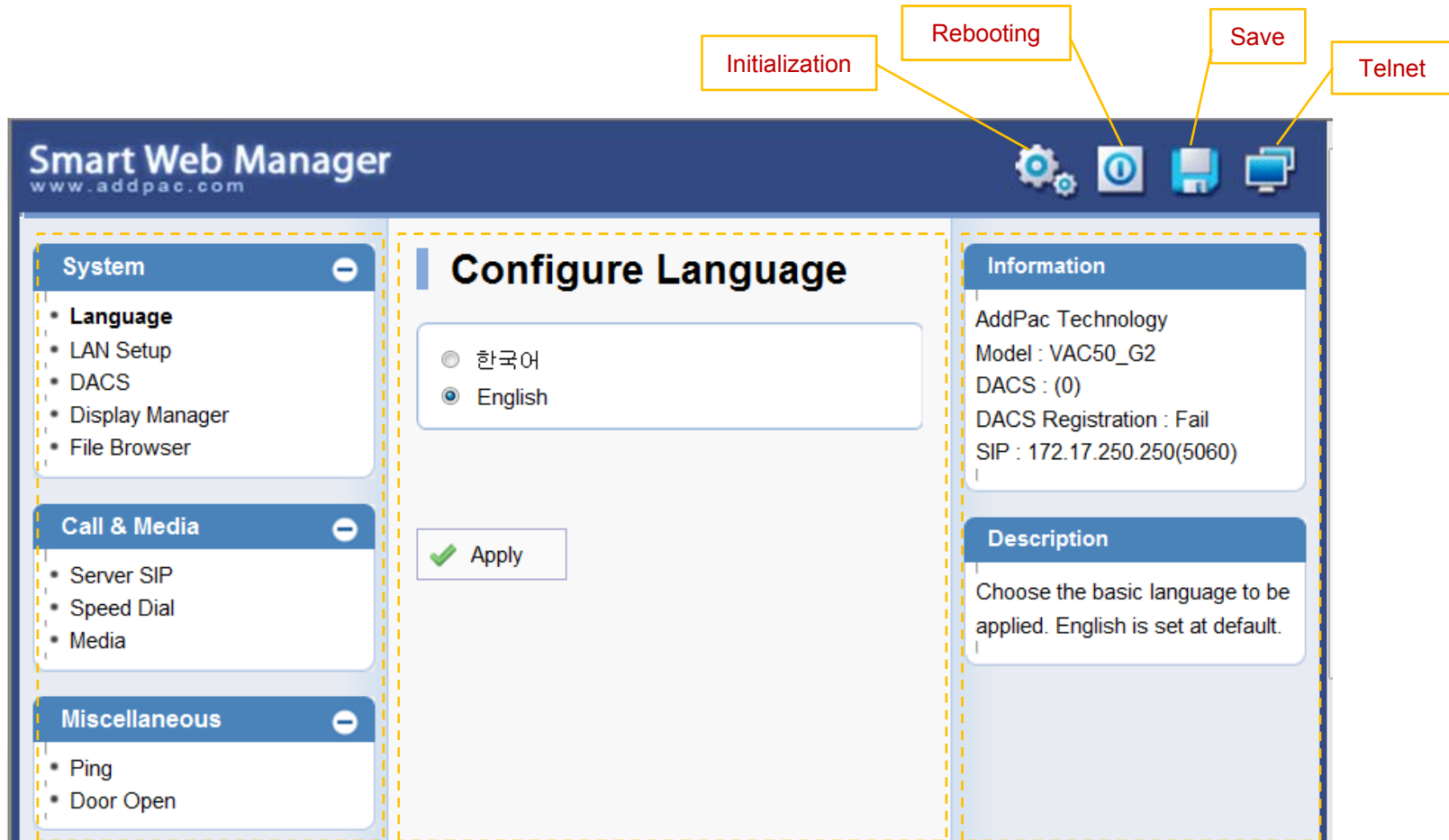
Smart Web Manager

AP-NRC70 Network RFID Controller

- Main Screen
- System
 - Language
 - LAN Setup
 - DACS
 - Display
 - File Browser
- Miscellaneous
 - Door Control and Test
 - Network Test

Smart Web Manager : Main Screen

AP-NRC70 Network RFID Controller



Menu Tree

Output Screen after
Menu Select

System Information and
Help Message

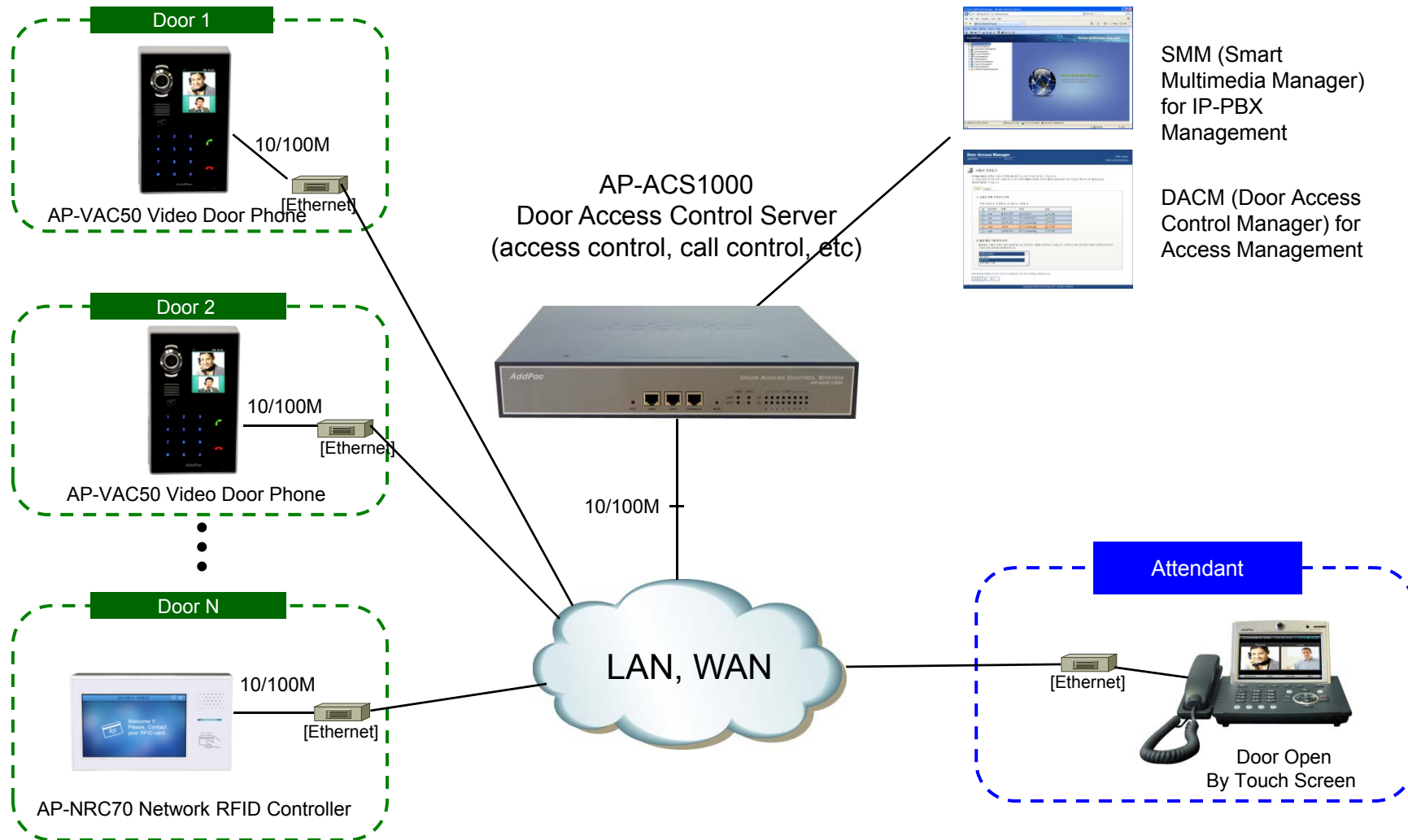
AP-NRC70 Network RFID Controller

Application Area

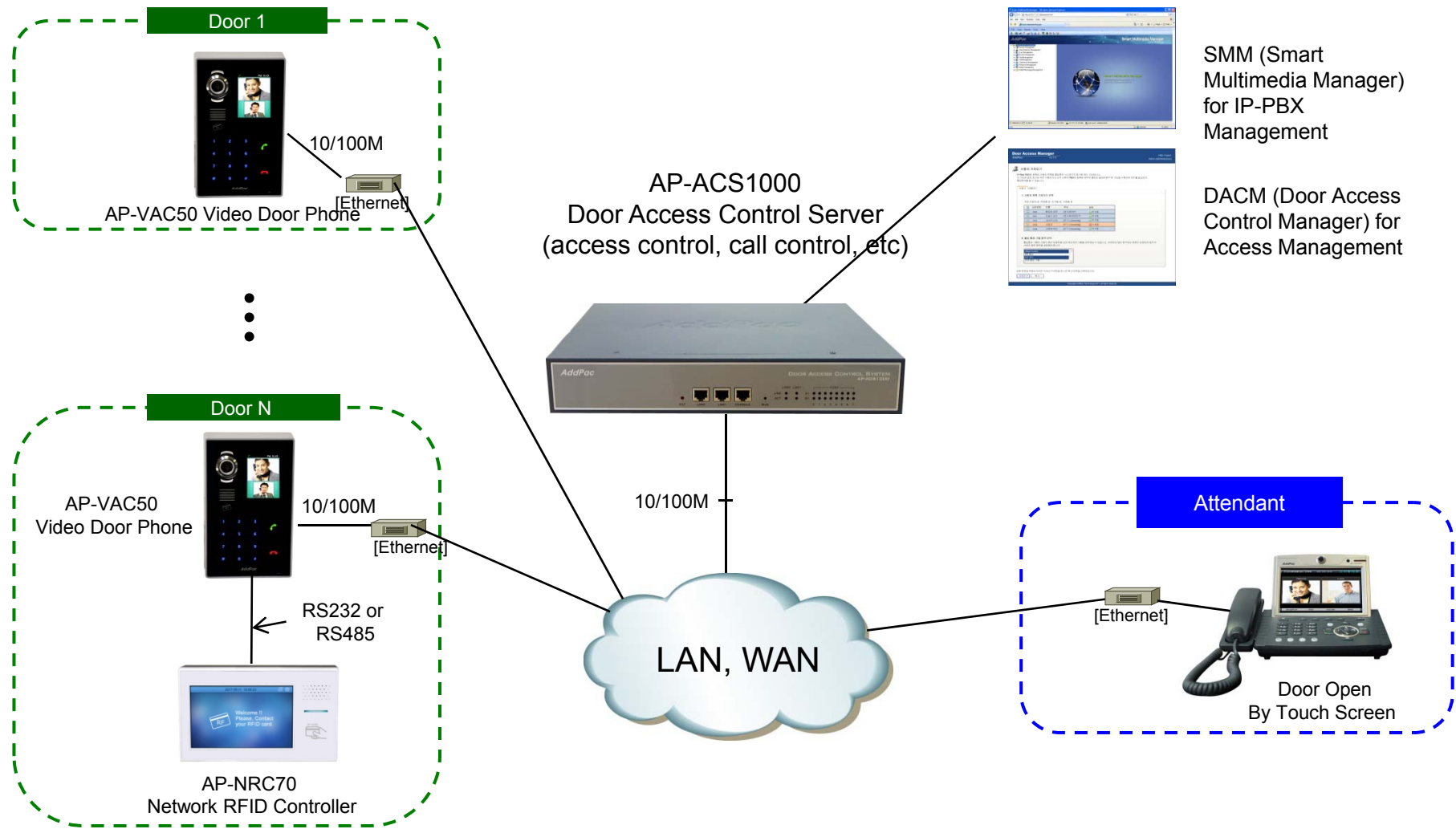
- RFID Stand-alone Mode
- RFID Video Door Phone Clone Mode



Integrated Door Access Control and Call Control (standalone mode)



Integrated Door Access Control and Call Control (clone mode)



Ordering Information

- **AP-NRC70 Network RFID Controller Hardware**
 - AP-NRC70 Network RFID Controller Main Body
 - RISC Microprocessor Programmable Architecture
 - 5 inch TFT Color LCD
 - Internal Speaker
 - 1-ports 10/100Mbps Fast Ethernet
 - Including Network Cable Set & Ext. Power Supply, etc.
 - Option : PoE Interface
- **Built-in APOS Internetworking Software**
- **Including 1 Year Hardware Warranty**
- **Product Documents**
 - Install and Operation Guide (PDF)
- **Pricing**
 - AddPac Technology Regional Sales Manager
 - Authorized Sales and Marketing Representatives
 - Please Contact www.addpac.com



Thank you!

AddPac Technology Co., Ltd.
Sales and Marketing

Phone +82.2.568.3848 (KOREA)

FAX +82.2.568.3847 (KOREA)

E-mail sales@addpac.com