

AP-SH3000

Enterprise Smart Hub for Wired & Z Sensors

High Performance Enterprise Smart Home Solution for
Wired Sensor & Zigbee/Zwave Sensors

Product Overview



AddPac

AddPac Technology

Sales and Marketing

www.addpac.com

Contents

- Product Overview
- Hardware Specification
- APOS Technology
- Network Protocols
- Network Management
- Security Management
- Application Service
- Ordering Information



Product Overview

AP-SH3000 Enterprise Smart Hub for Wired Sensor & Z sensors

- Advanced Smart Enterprise Solution
- Wired Sensor (Alarm input, Relay Out), RS485 Sensor Interface Support
- Zigbee/Zwave Dual Sensor Interface Support
- Two(2) Module Slot Support for Wired and Wireless Sensors
- Smart IP Routing Service Features for Sensor Network
- AddPac IoT Solution Interworking Service Features
- Smart Hub Interworking Support for Third Party
- Module Type Hardware Architecture for Flexibility and Scalability
- High Performance RISC Programmable Architecture
- External Antenna Support for Zwave/ZigBee Sensor Device
- High Performance LAN-to-Zigbee/Zwave Routing Capability
- Powerful Network Protocols (PPPoE, DHCP, Static Routing, etc)
- Firmware Upgradeable Architecture
- Smart Web based Management
- Light and Compact Design with External Power Supply

Product Highlights

AP-SH3000 Enterprise Smart Hub for Wired Sensor & Z sensors

Powerful Smart Hub for wired sensor & Z sensors

**Zigbee/Zwave Dual
Sensor Interface Support**

**Two(2) Module Slots Support
for sensor Interface**

**Smart Sensor network IP
routing service support**

**High Performance
Programmable RISC CPU**

**Smart Hub Interworking Service
for third party**

**Broadband IP Networking
With Fast Ethernet**

**APOS™ Technology
Firmware Upgradeable Architecture**

**Smart Web Management
Support**

**Powerful Network Protocol
Support**

**Powerful Trouble Shooting &
Debugging Feature Support**

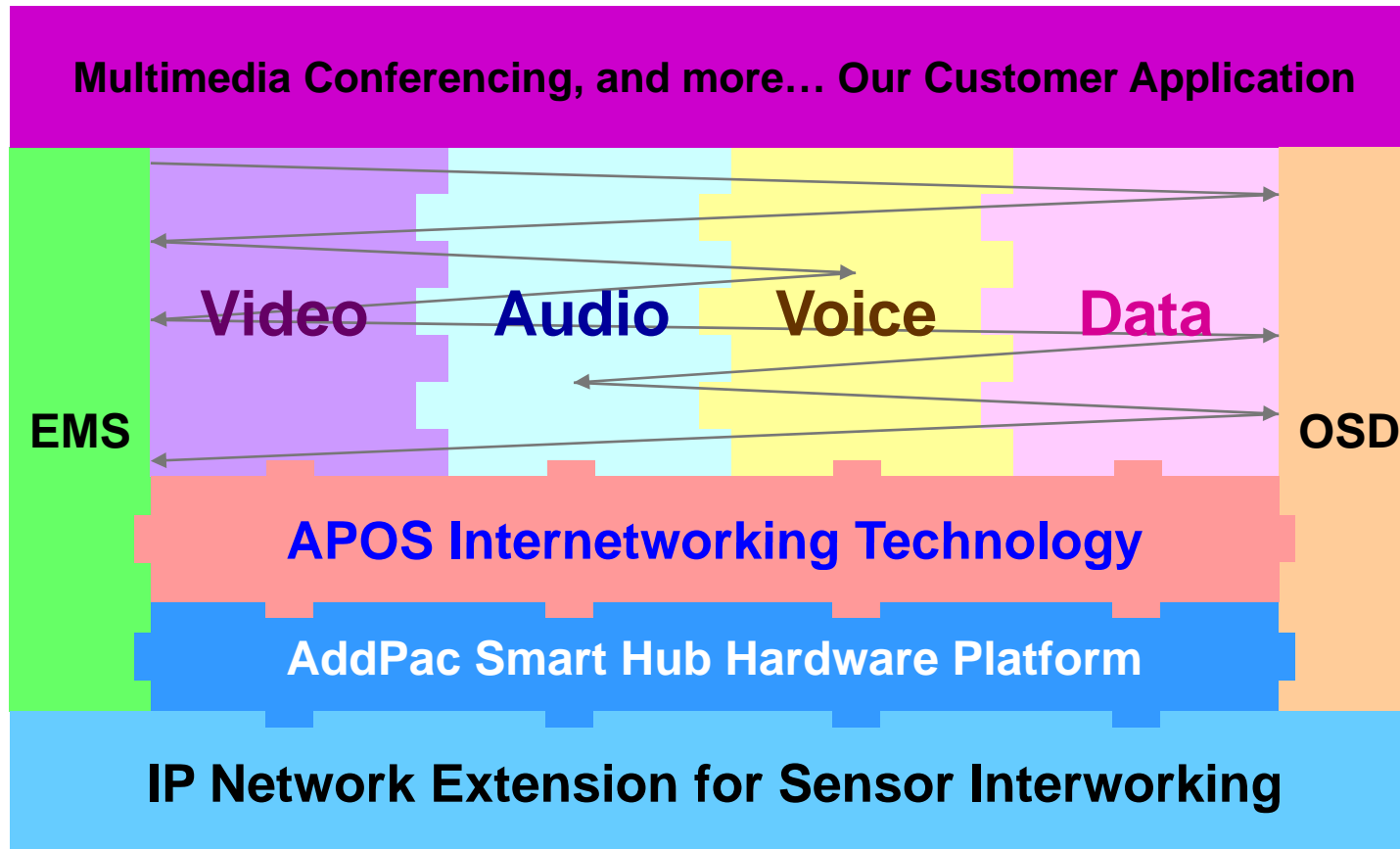
**Firmware Upgradeable
Architecture**

AddPac

www.addpac.com

APOS Technology

AP-SH3000 Enterprise Smart Hub for Wired Sensor & Z sensors



- APOS : AddPac Internetworking Operating System
- OSD : On- Screen Display
- EMS : Element Management System

Hardware Specification

AP-SH3000 Enterprise Smart Hub for Wired Sensor & Z sensors


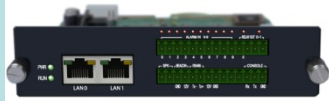
A square logo with a dark blue background and a light blue border. The text "RISC" is positioned above "CPU" in white, bold, sans-serif font.

RISC
CPU

- RISC Microprocessor Computing Power
- Two(2) Module Slots for Sensor Interface
- Wired Sensor Interface Modules
 - AP-A6R4 : Wired Sensor, Alarm Input 6, Relay Out 4
 - AP-A10R2 : Wired Sensor, Alarm Input 10, Relay Out 2
- Z Sensor Interface Modules
 - AP-ZBW100 : ZigBee and ZWave Dual Interface
 - AP-ZW100 : ZWave Interface, One(1) Antenna
 - AP-ZW104 : ZWave Interface, Four(4) Antenna
 - AP-ZBW200 : ZigBee and ZWave Dual Interface (USB WiFi)
 - AP-ZW200 : ZWave Interface, One(1) Antenna (USB WiFi)
 - AP-ZW204 : ZWave Interface, Four(4) Antenna(USB WiFi)
- External Power Supply




Hardware Specification

AP-SH3000 Enterprise Smart Hub for Wired Sensor & Z sensors

Module	AP-A6R4	AP-A10R2
Specification		
Alarm Input	6 Port	10 Port
Relay Out	4 Port	2 Port
RS485 Interface	Support	Support
Network Interface	Two(2)10/100Mbps Fast Ethernet	Two(2)10/100Mbps Fast Ethernet
RS232C Console	1	1
Speaker & Beacon Port	Support	Support




Hardware Specification

AP-SH3000 Enterprise Smart Hub for Wired Sensor & Z sensors

Module	AP-ZBW100	AP-ZW100	AP-ZW104
Specification			
ZigBee Interface	Support	N/A	N/A
ZigBee Antenna	1	N/A	N/A
ZWave Interface	Support	Support	Support
ZWave Antenna	1	1	4
Network Interface	10/100Mbps Fast Ethernet	10/100Mbps Fast Ethernet	10/100Mbps Fast Ethernet
RS232C Console	1	1	1
Speaker & Beacon Port	Support	Support	Support

Hardware Specification

AP-SH3000 Enterprise Smart Hub for Wired Sensor & Z sensors

Module	AP-ZBW200	AP-ZW200	AP-ZW204
Specification			
ZigBee Interface	Support	N/A	N/A
ZigBee Antenna	1	N/A	N/A
ZWave Interface	Support	Support	Support
ZWave Antenna	1	1	4
Network Interface	10/100Mbps Fast Ethernet	10/100Mbps Fast Ethernet	10/100Mbps Fast Ethernet
USB Interface	WiFi USB Module Support	WiFi USB Module Support	WiFi USB Module Support
RS232C Console	1	1	1
Speaker & Beacon Port	Support	Support	Support

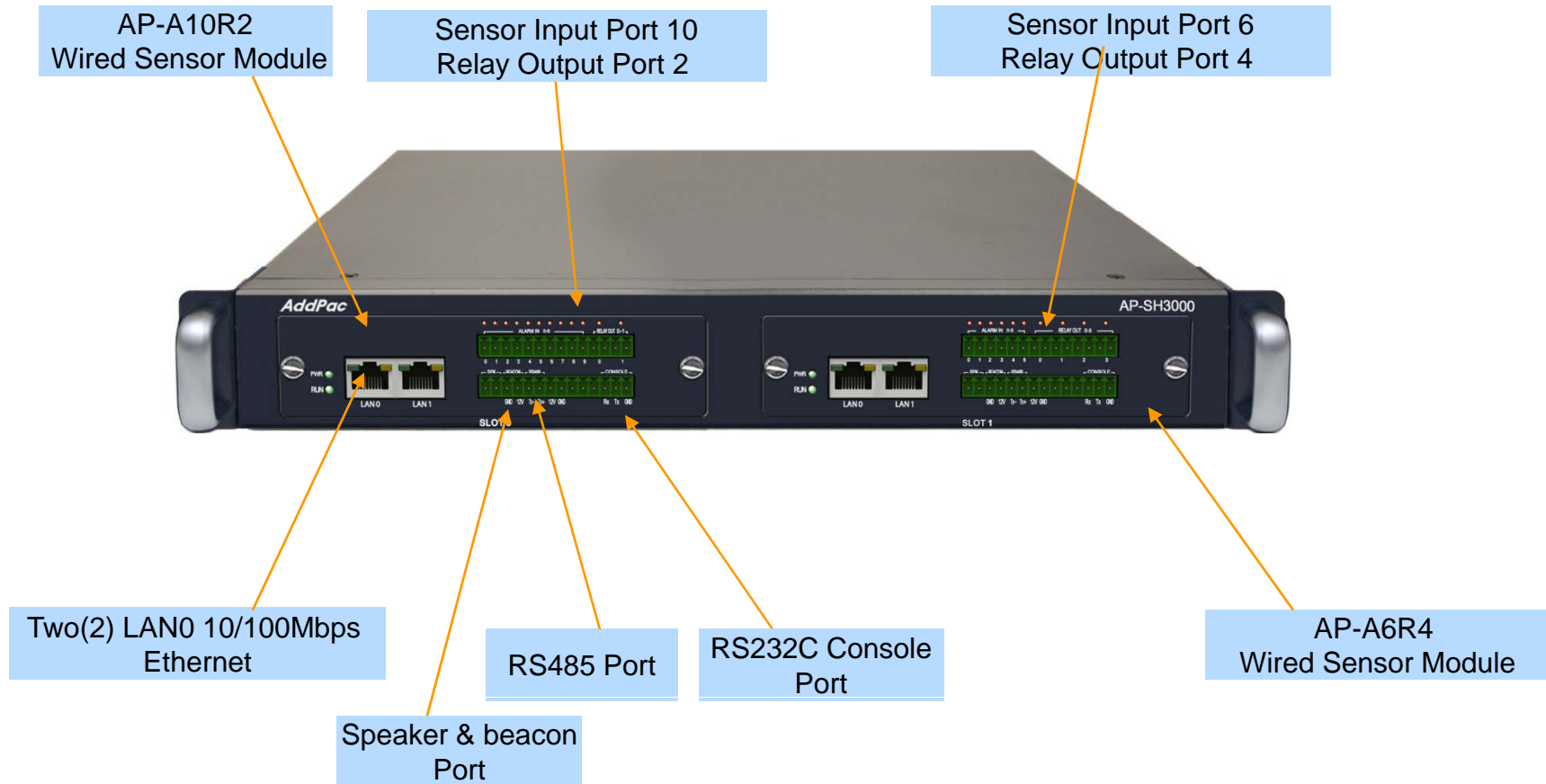
Hardware Specification

AP-SH3000 Enterprise Smart Hub for Wired Sensor & Z sensors

AP-SH3000 Smart Hub	Basic Specifications
Module Slot	Two(2) Module Slots for Wired & Wireless Sensor Module
AP-A6R4 Sensor Interface Module	6 Wired Sensor Input, 4 Relay Out, RS485, Two(2) LAN, SPK, BEACON, RS232 Console
AP-A10R2 Sensor Interface Module	10 Wired Sensor Input, 2 Relay Out, RS485, Two(2) LAN, SPK, BEACON, RS232 Console
AP-ZBW100 Sensor Interface Module	One(1)-Port ZigBee Interface, One(1)-Port ZWave Interface, One(1) LAN, RS232 Console, SPK, BEACON
AP-ZW100 Sensor Interface Module	One(1)-Port ZWave Interface, One(1) LAN, RS232 Console, SPK, BEACON
AP-ZW104 Sensor Interface Module	One(1)-Port ZWave Interface with 4 Antenna Port, One(1) LAN, RS232 Console, SPK, BEACON
Flash Memory	4Mbyte High-speed Flash Memory
Base Memory	32Mbyte High-speed SDRAM
Power Requirement	Power Supply Adaptor / VAC 110~220V, 50/60Hz, 12V, 1A
Operating Temperature	0°C ~ 45°C (32 °F ~ 122°F)
Storage Temperature	-40°C ~ 85°C (-40°C ~ 185°F)
Relative Humidity	5% ~ 95% (Non-condensing)
Dimension (H x W x D)	44 mm x 320mm x 180mm

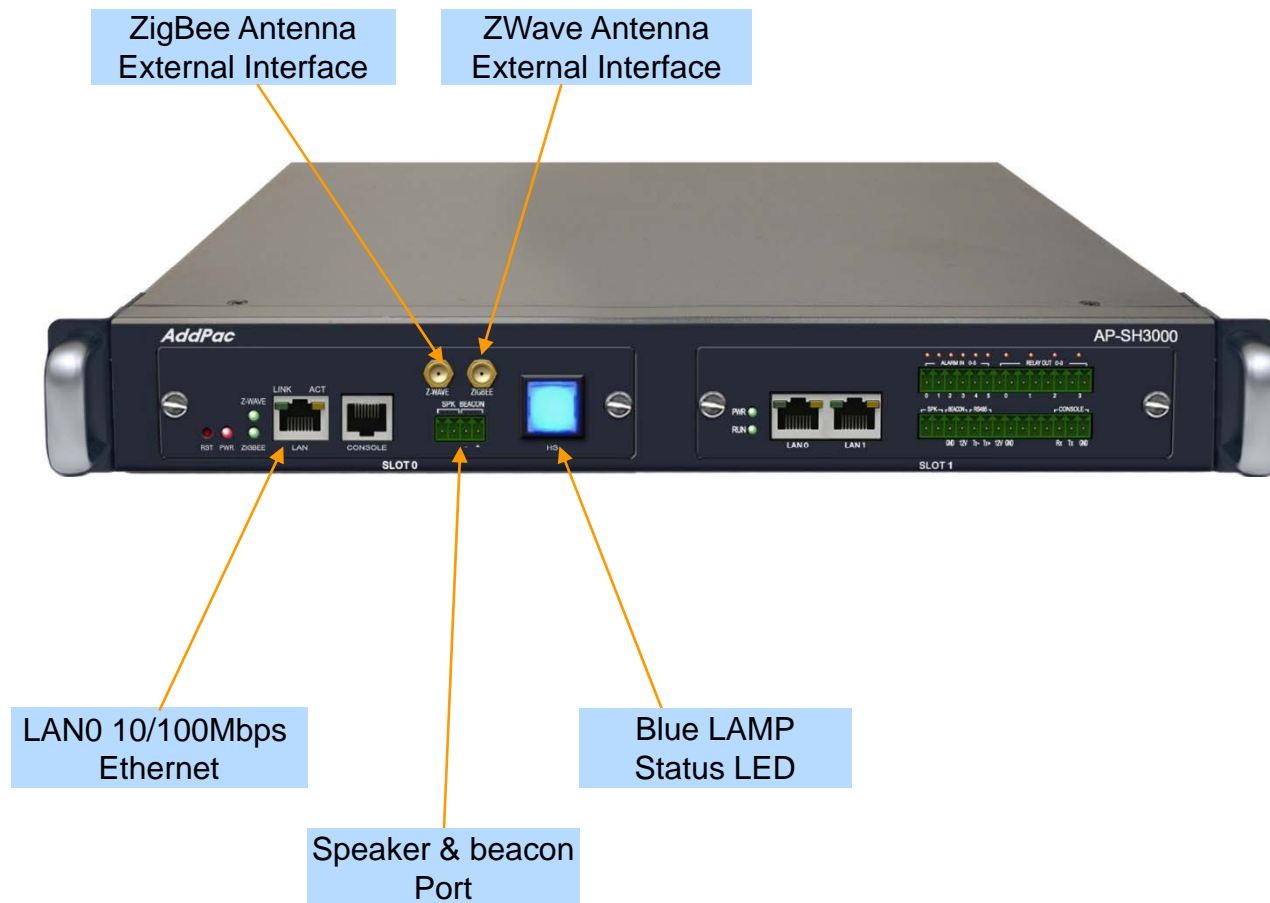
Hardware Specification

AP-SH3000 Enterprise Smart Hub for Wired Sensor & Z sensors



Hardware Specification

AP-SH3000 Enterprise Smart Hub for Wired Sensor & Z sensors



Network Protocols

AP-SH3000 Enterprise Smart Hub for Wired Sensor & Z sensors

Basic Network Protocols

- ARP, IPv4, TCP, UDP, ICMP, SCTP, IGMP, MLD

Routing Protocol

- IPv4 : Static

Service Protocol

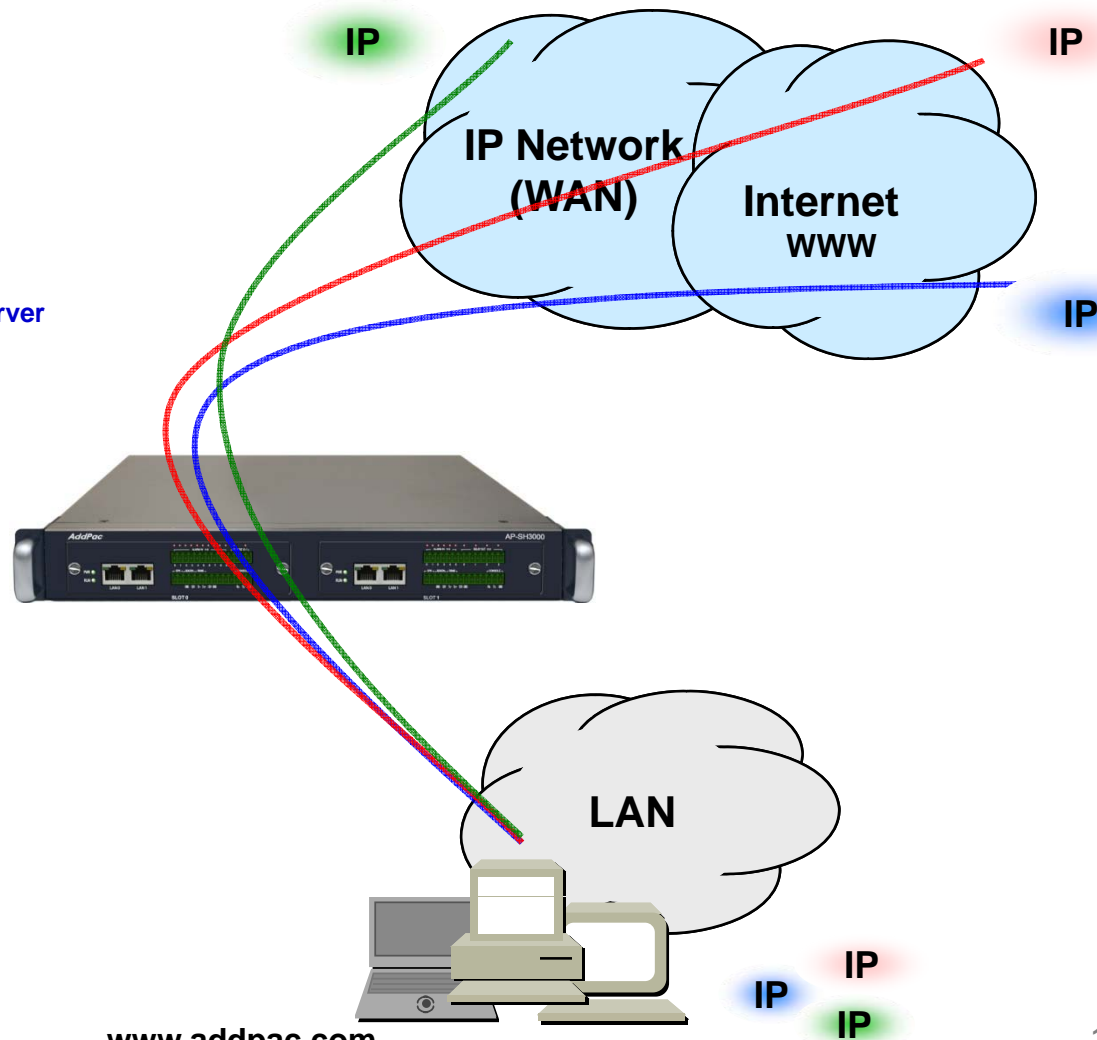
- FTP, Telnet, TFTP, DHCP Server/Relay, SNMP Server
- CDP (Cisco Discovery Protocol)
- DNS Resolver , DDNS(nsupdate)
- Bridge
- Syslog

IPv4 Address Configuration

- Fixed (Static)
- DHCP
- PPPoE

Miscellaneous

- Cisco Style CLI
- Standard & Extended IPv4 Access List
- Multi-level User Account Management
- IP accounting
- STUN Client

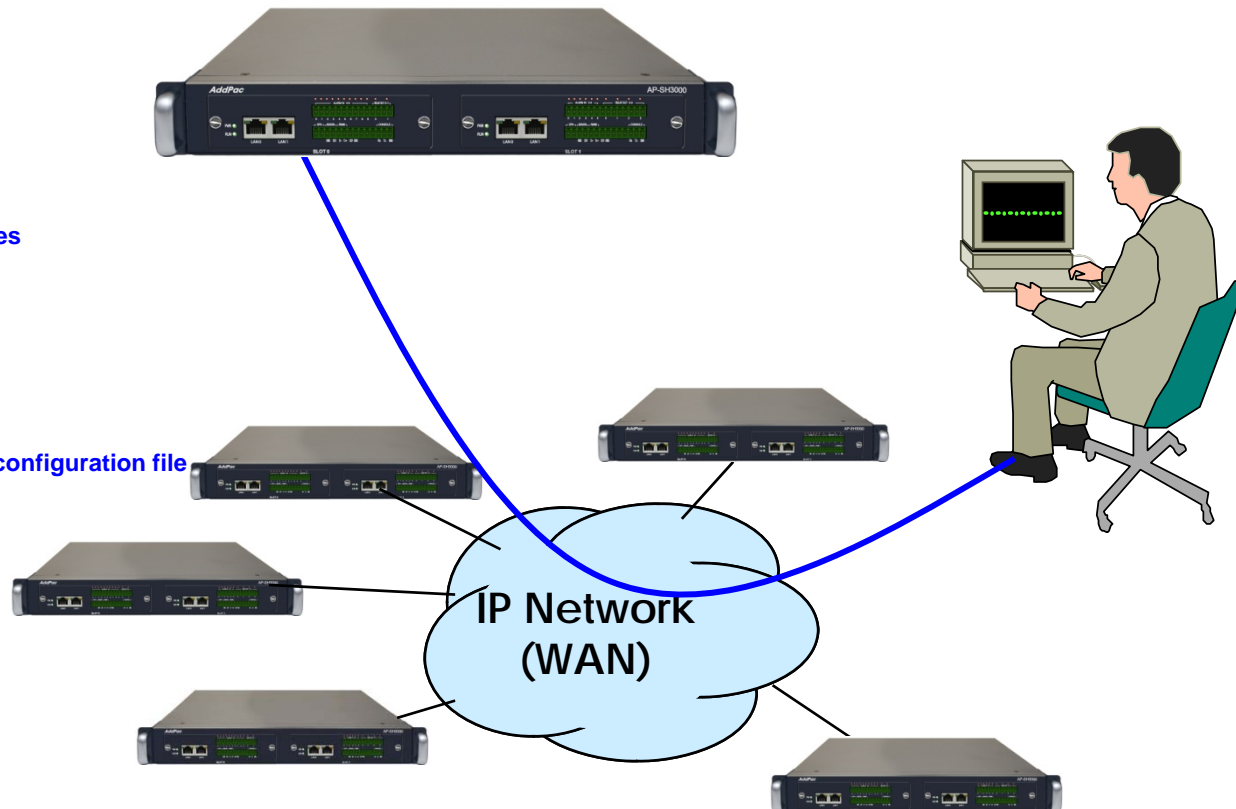


Network Management

AP-SH3000 Enterprise Smart Hub for Wired Sensor & Z sensors

- **SNMP**
 - Standard Simple Network Management Protocol(SNMP) Agent support
 - MIB v1 and v2 Support
- **Web-based Management**
 - Smart Easy Setup
 - Standard Voice Interface
 - Standard PSTN Back-up Interface
- **Watch-dog Function**
 - Hardware, Software watch-dog services
- **Remote Management**
 - Telnet
 - Rlogin
- **Auto Upgrade Service**
 - HTTP server based APOS image and configuration file auto-upgrade support
- **Batch Job Function**
 - Text based script downloading

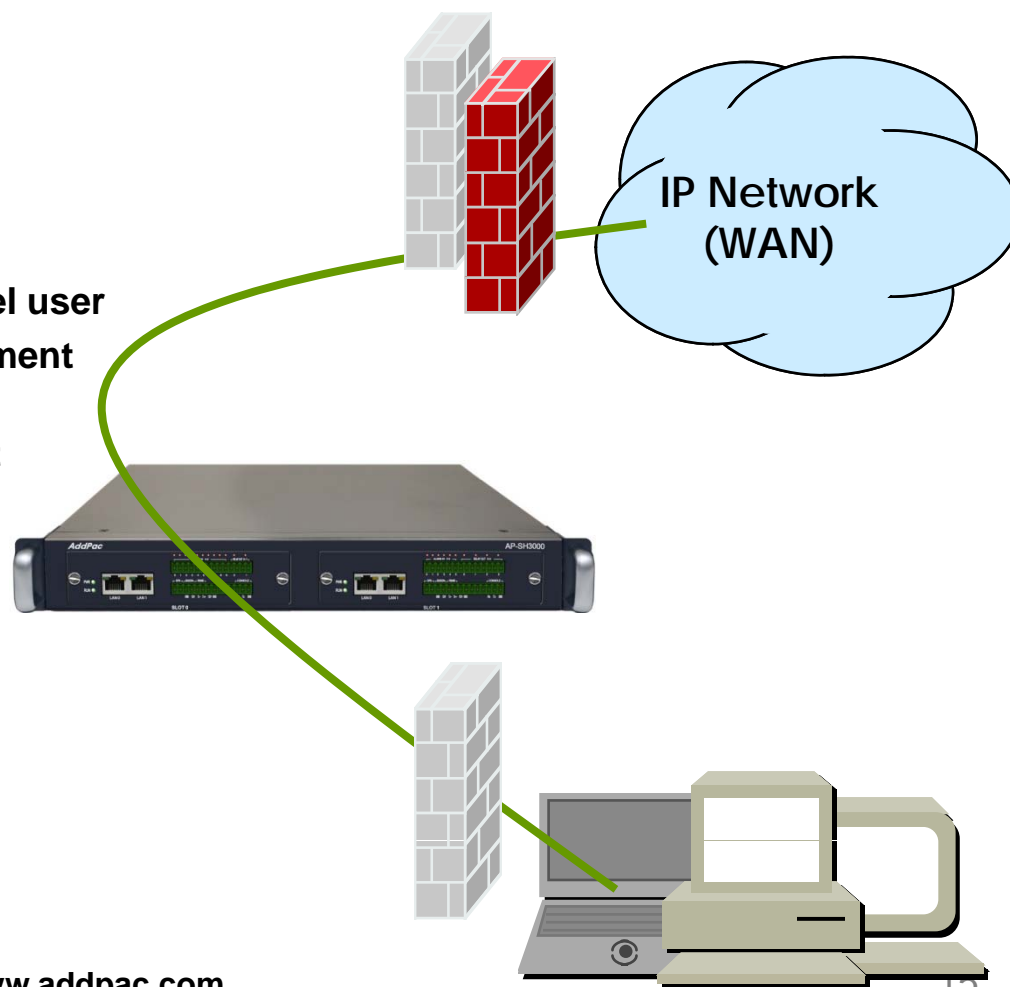
- **Interoperable with AP-NMS Service**
 - AddPac Smart Network Management System



Security Management

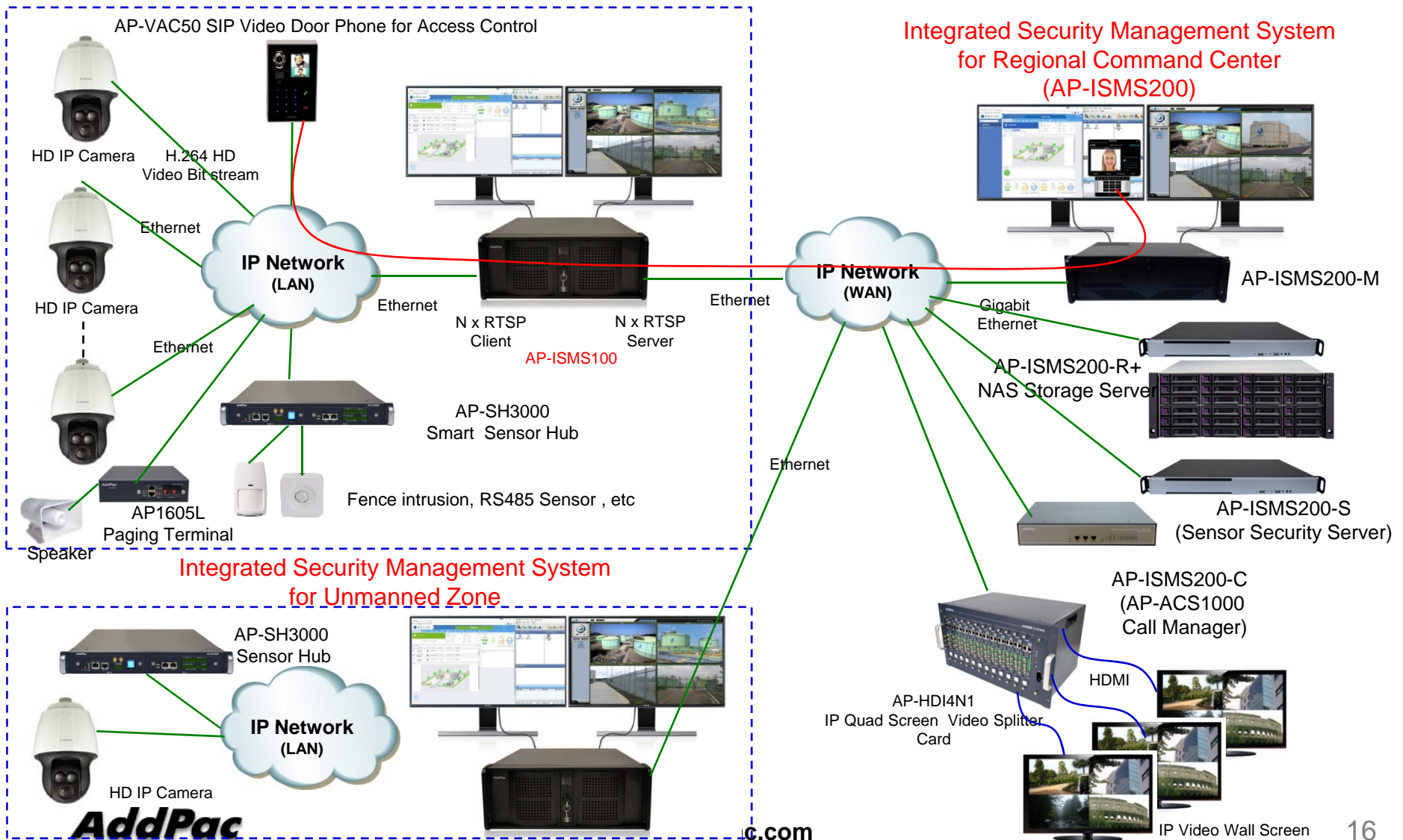
AP-SH3000 Enterprise Smart Hub for Wired Sensor & Z sensors

- IP packet filtering
- IP access list
- User authentication function
 - Password Authentication Protocol (PAP)
 - Challenge Handshake Authentication Protocol (CHAP)
- Enable/Disable specific protocols
- Auto-square connect of Telnet session
- Account Management function for multi-level user
- SNMP/TELNET/FTP/HTTP/TFTP port assignment function
- SNMP/TELNET/FTP access list management
- Boot mode security checking function



Standard Application

AP-SH3000 Enterprise Smart Hub for Wired Sensor & Z sensors



Ordering Information

- **AP-SH3000 Enterprise Smart Hub Hardware**
 - AP-SH3000 Enterprise Smart Hub Main Body
 - Sensor Modules : AP-A10R2, AP-A6R4 AP-ZBW100, AP-ZW100, AP-ZW104, etc
 - Including Network Cable, Antenna & Ext. Power Supply, etc.
- **Built-in APOS Internetworking Software for AP-SH3000**
- **Including 1 Year Hardware Warranty**
- **Product Documents**
 - Install and Operation Guide (PDF)
- **Pricing**
 - AddPac Technology Regional Sales Manager
 - Authorized Sales and Marketing Representatives
 - Please Contact www.addpac.com

Smart Hub Series

Thank you!

AddPac Technology Co., Ltd.
Sales and Marketing

Phone +82.2.568.3848 (KOREA)

FAX +82.2.568.3847 (KOREA)

E-mail sales@addpac.com