



# AP-SH1000 (500 series) Enterprise Smart Sensor Hub for Wired Sensors

High Performance Enterprise Smart Sensor Hub Solution for Wired Sensors

## Product Overview



**AddPac**

**AddPac Technology**

Sales and Marketing

[www.addpac.com](http://www.addpac.com)

# Contents

- Product Overview
- Hardware Specification
- APOS Technology
- Network Protocols
- Network Management
- Security Management
- Application Service
- Ordering Information

# Product Overview

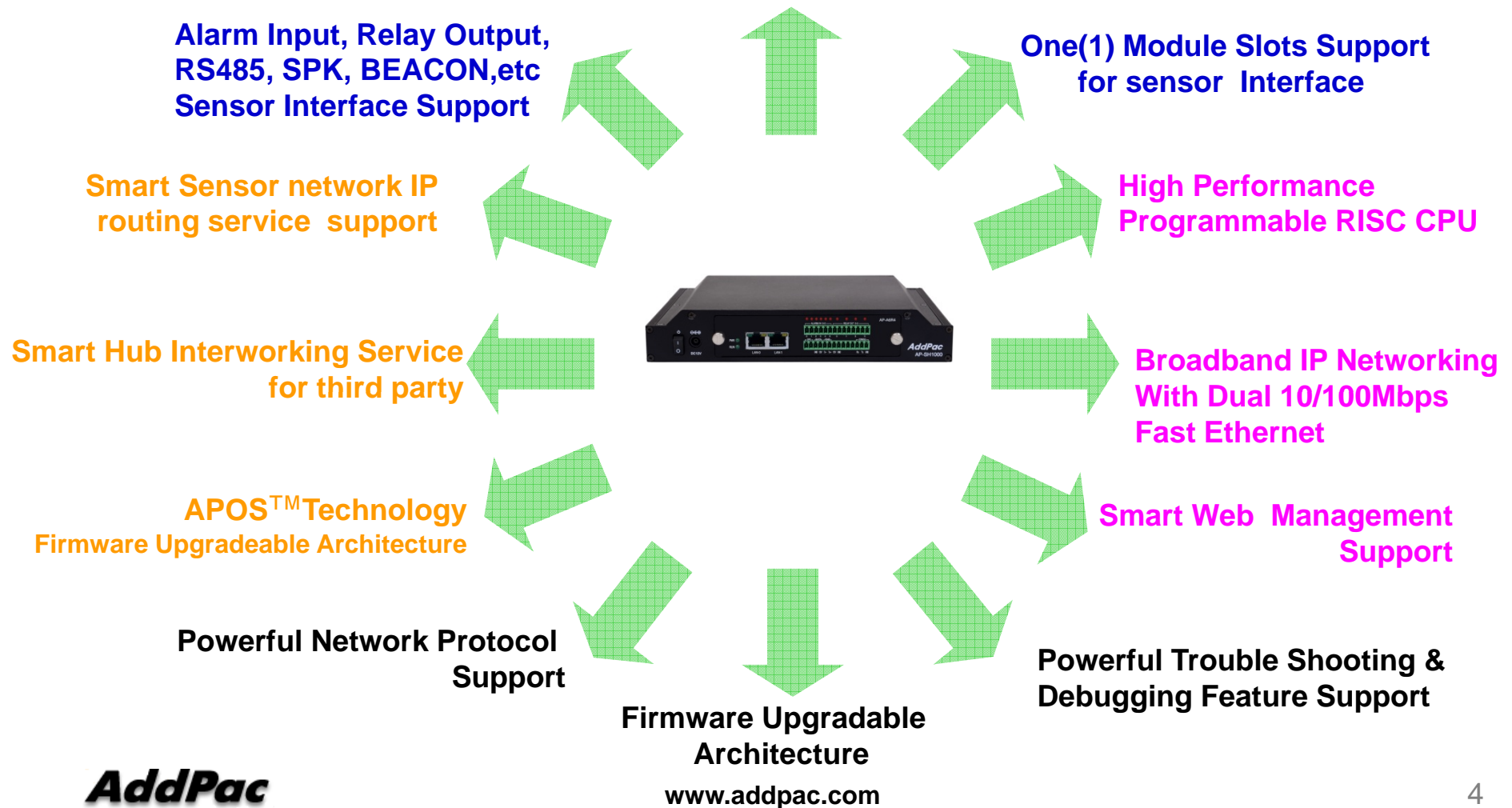
## AP-SH1000 Enterprise Smart Sensor Hub for Wired Sensors

- Advanced Smart Enterprise Solution
- Wired Sensor (Alarm input, Relay Out), RS485 Sensor Interface Support
- One(1) Module Slot Support for Wired Sensors
- Various Wired Sensor Interface Module Support
- Smart IP Routing Service Features for Sensor Network
- AddPac IoT Solution Interworking Service Features
- Smart Hub Interworking Support for Third Party
- Module Type Hardware Architecture for Flexibility and Scalability
- High Performance RISC Programmable Architecture
- Powerful Network Protocols (PPPoE, DHCP, Static Routing, etc)
- Firmware Upgradeable Architecture
- Smart Web based Management
- Light and Compact Chassis Design with External Power Supply

# Product Highlights

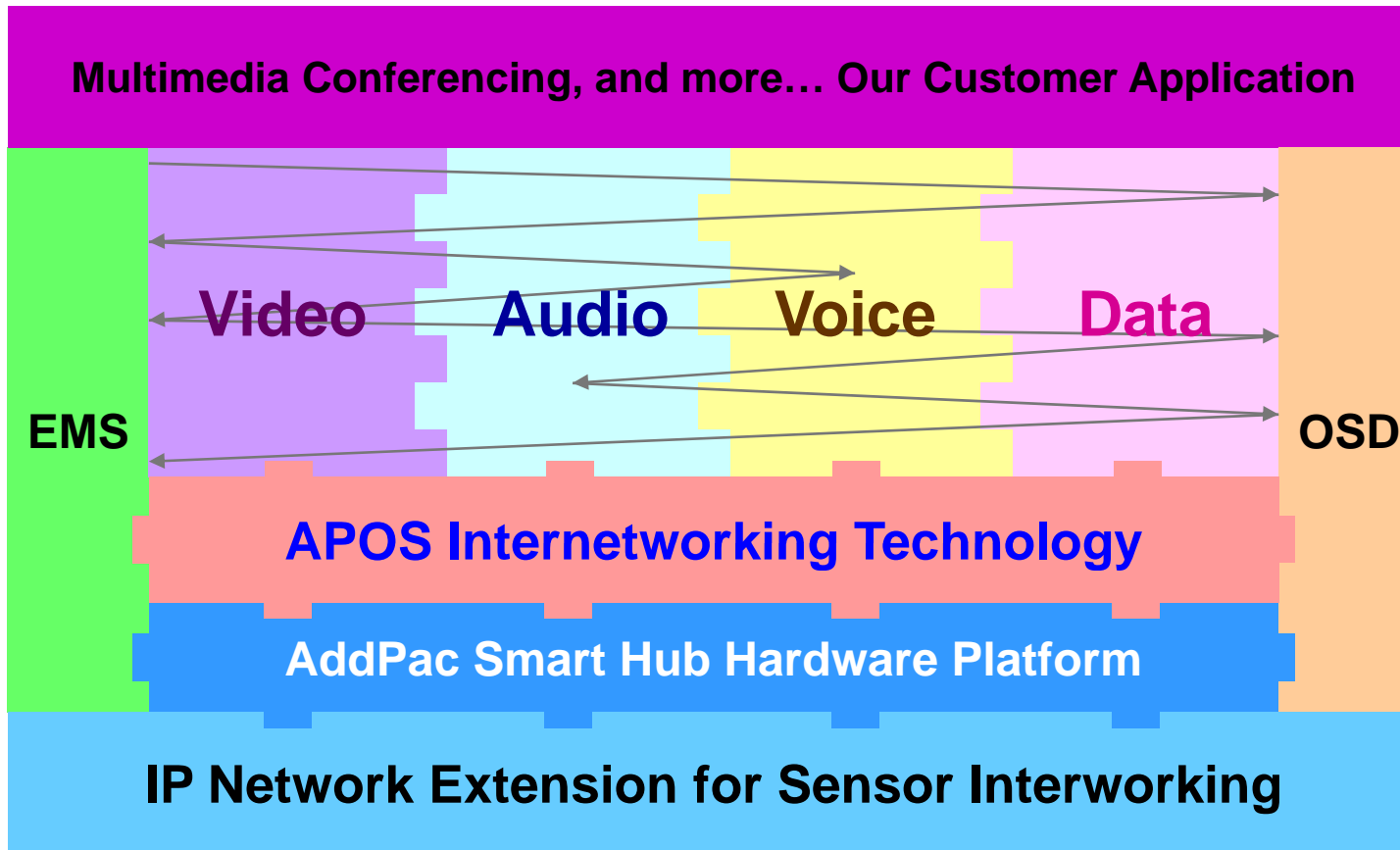
AP-SH1000 Enterprise Smart Sensor Hub for Wired Sensors

## Powerful Smart Hub for Wired Sensors



# APOS Technology

AP-SH1000 Enterprise Smart Sensor Hub for Wired Sensors



- APOS : AddPac Internetworking Operating System
- OSD : On- Screen Display
- EMS : Element Management System

# Hardware Specification

AP-SH1000 Enterprise Smart Sensor Hub for Wired Sensors



A square logo with a dark blue background and a light blue border. The text "RISC" is positioned above "CPU" in white, bold, sans-serif font.

RISC  
CPU

- RISC Microprocessor Computing Power
- One(1) Module Slot for Sensor Interface
- Wired Sensor Interface Modules
  - AP-A6R4 : Wired Sensor, Alarm Input 6, Relay Out 4
  - AP-A10R2 : Wired Sensor, Alarm Input 10, Relay Out 2
- SPEAKER, BEACON Port Support
- RS485 Interface Support
- Dual(2) LAN 10/100Mbps Interface Support
- External Power Supply

# Hardware Specification

AP-SH1000 Enterprise Smart Sensor Hub for Wired Sensors

| Module            | AP-A6R4  | AP-A10R2  |
|-------------------|--|---|
| Specification     |  |  |
| Alarm Input       | 6 Port   | 10 Port   |
| Relay Out         | 4 Port   | 2 Port  |
| RS485 Interface   | Support  | Support   |
| Network Interface | Two(2)10/100Mbps Fast Ethernet   | Two(2)10/100Mbps Fast Ethernet  |
| RS232C Console    | 1  | 1   |
| Speaker Port      | Support  | Support   |
| Beacon Port       | Support  | Support   |

# Hardware Specification

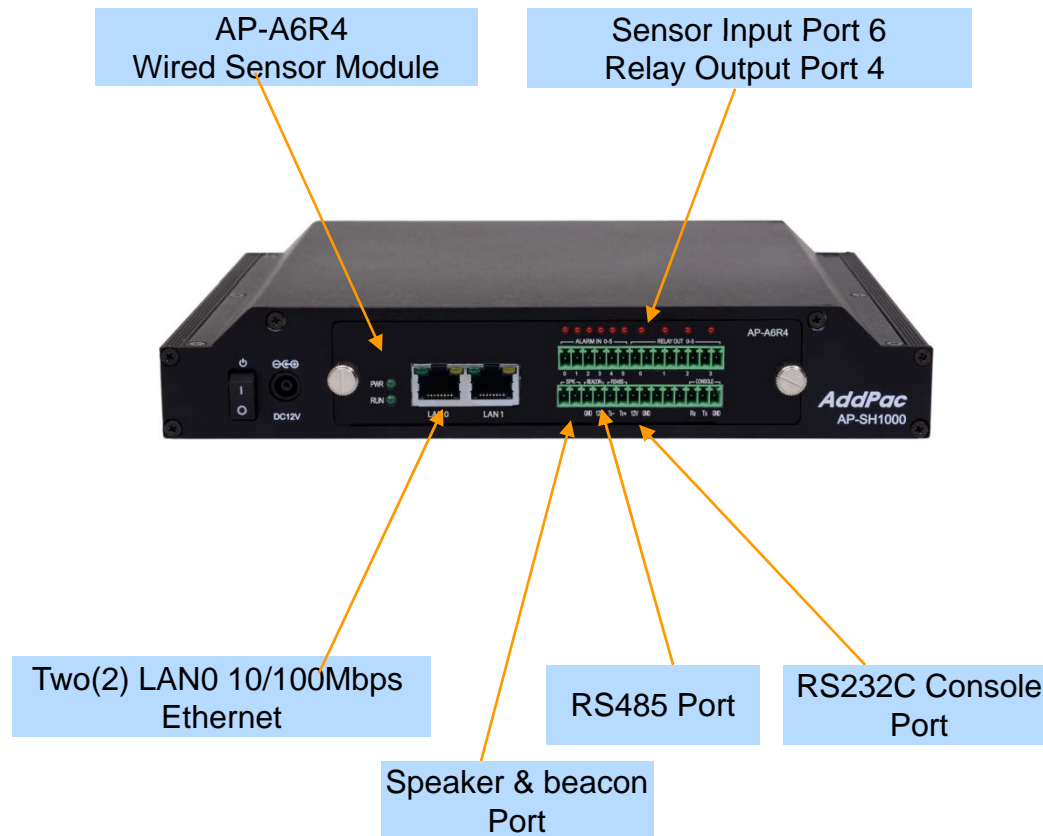
## AP-SH1000 Enterprise Smart Sensor Hub for Wired Sensors

| <b>AP-SH1000 Smart Hub</b>              | <b>Basic Specifications</b>   |
|---|---|
| <b>Module Slot</b>                      | One(1) Module Slots for Wired & Wireless Sensor Module                            |
| <b>AP-A6R4 Sensor Interface Module</b>  | 6 Wired Sensor Input, 4 Relay Out, RS485, Two(2) LAN, SPK, BEACON, RS232 Console  |
| <b>AP-A10R2 Sensor Interface Module</b> | 10 Wired Sensor Input, 2 Relay Out, RS485, Two(2) LAN, SPK, BEACON, RS232 Console |
| <b>Flash Memory</b>                     | 4Mbyte High-speed Flash Memory  |
| <b>Base Memory</b>                      | 32Mbyte High-speed SDRAM  |
| <b>Power Requirement</b>                | Power Supply Adaptor / VAC 110~220V, 50/60Hz, 12V, 1A                             |
| <b>Operating Temperature</b>            | 0°C ~ 45°C (32 °F ~ 122°F)  |
| <b>Storage Temperature</b>              | -40°C ~ 85°C (-40°C ~ 185°F)  |
| <b>Relative Humidity</b>                | 5% ~ 95% (Non-condensing)   |
| <b>Dimension (H x W x D)</b>            | 40 mm x 230mm x 175mm   |
| <b>Weight (Kg)</b>                      | 1.25Kg  |



# Hardware Specification

AP-SH1000 Enterprise Smart Sensor Hub for Wired Sensors



# Network Protocols

AP-SH1000 Enterprise Smart Sensor Hub for Wired Sensors

## Basic Network Protocols

- ARP, IPv4, TCP, UDP, ICMP, SCTP, IGMP, MLD

## Routing Protocol

- IPv4 : Static

## Service Protocol

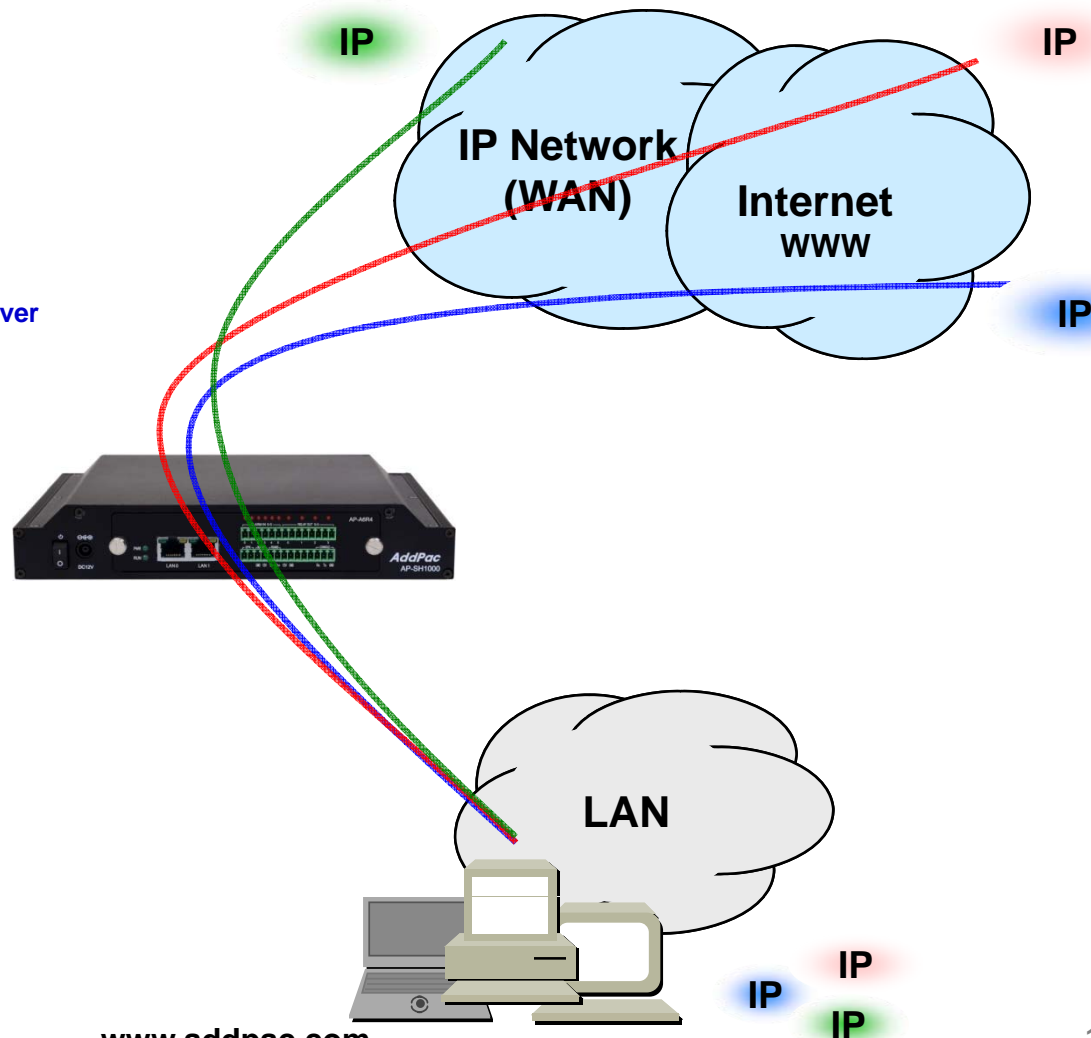
- FTP, Telnet, TFTP, DHCP Server/Relay, SNMP Server
- CDP (Cisco Discovery Protocol)
- DNS Resolver , DDNS(nsupdate)
- Bridge
- Syslog

## IPv4 Address Configuration

- Fixed (Static)
- DHCP
- PPPoE

## Miscellaneous

- Cisco Style CLI
- Standard & Extended IPv4 Access List
- Multi-level User Account Management
- IP accounting
- STUN Client



# Network Management

## AP-SH1000 Enterprise Smart Sensor Hub for Wired Sensors

- **SNMP**

- Standard Simple Network Management Protocol( SNMP) Agent support
- MIB v1 and v2 Support

- **Web-based Management**

- Smart Easy Setup
- Standard Voice Interface
- Standard PSTN Back-up Interface

- **Watch-dog Function**

- Hardware, Software watch-dog services

- **Remote Management**

- Telnet
- Rlogin

- **Auto Upgrade Service**

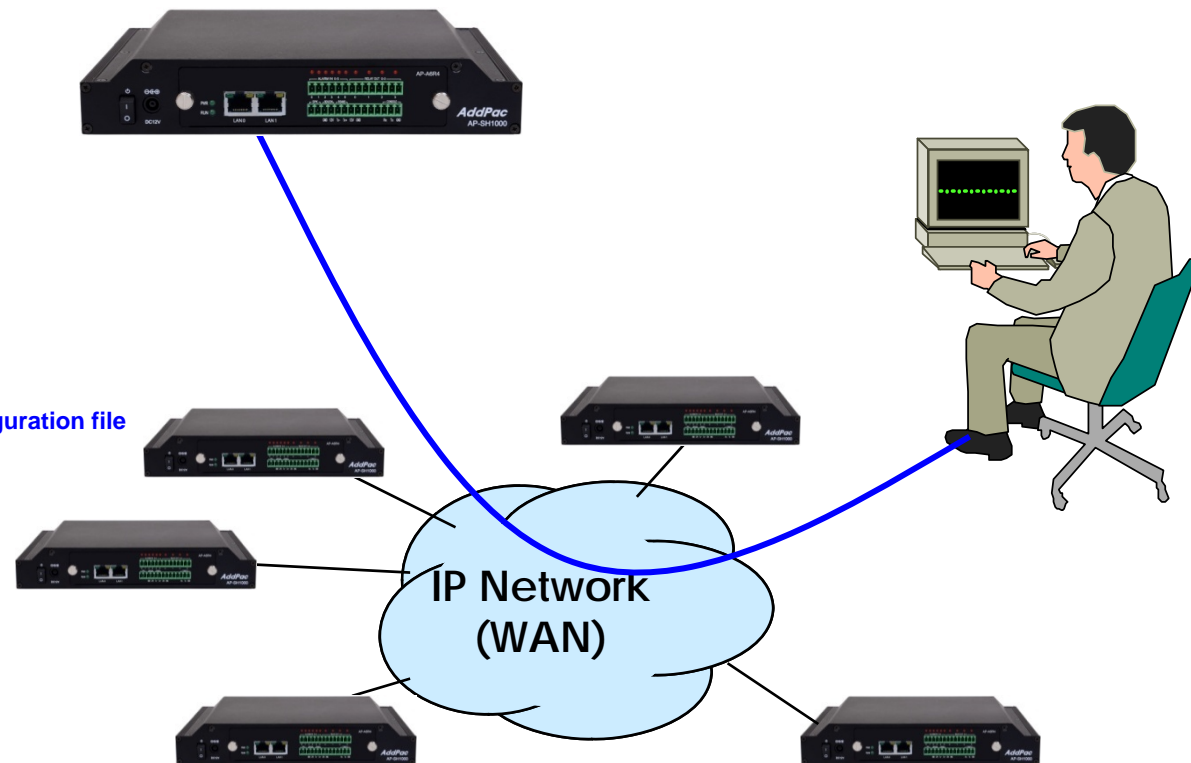
- HTTP server based APOS image and configuration file auto-upgrade support

- **Batch Job Function**

- Text based script downloading

- **Interoperable with AP-NMS Service**

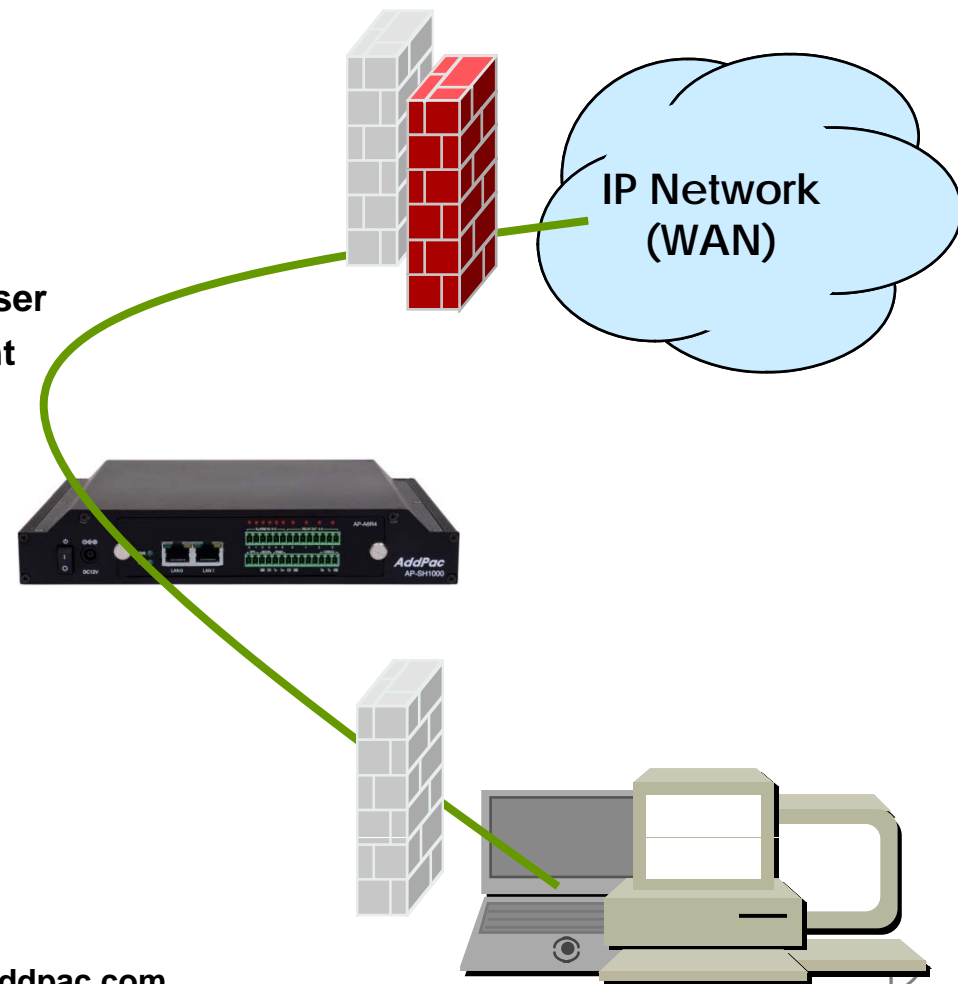
- AddPac Smart Network Management System



# Security Management

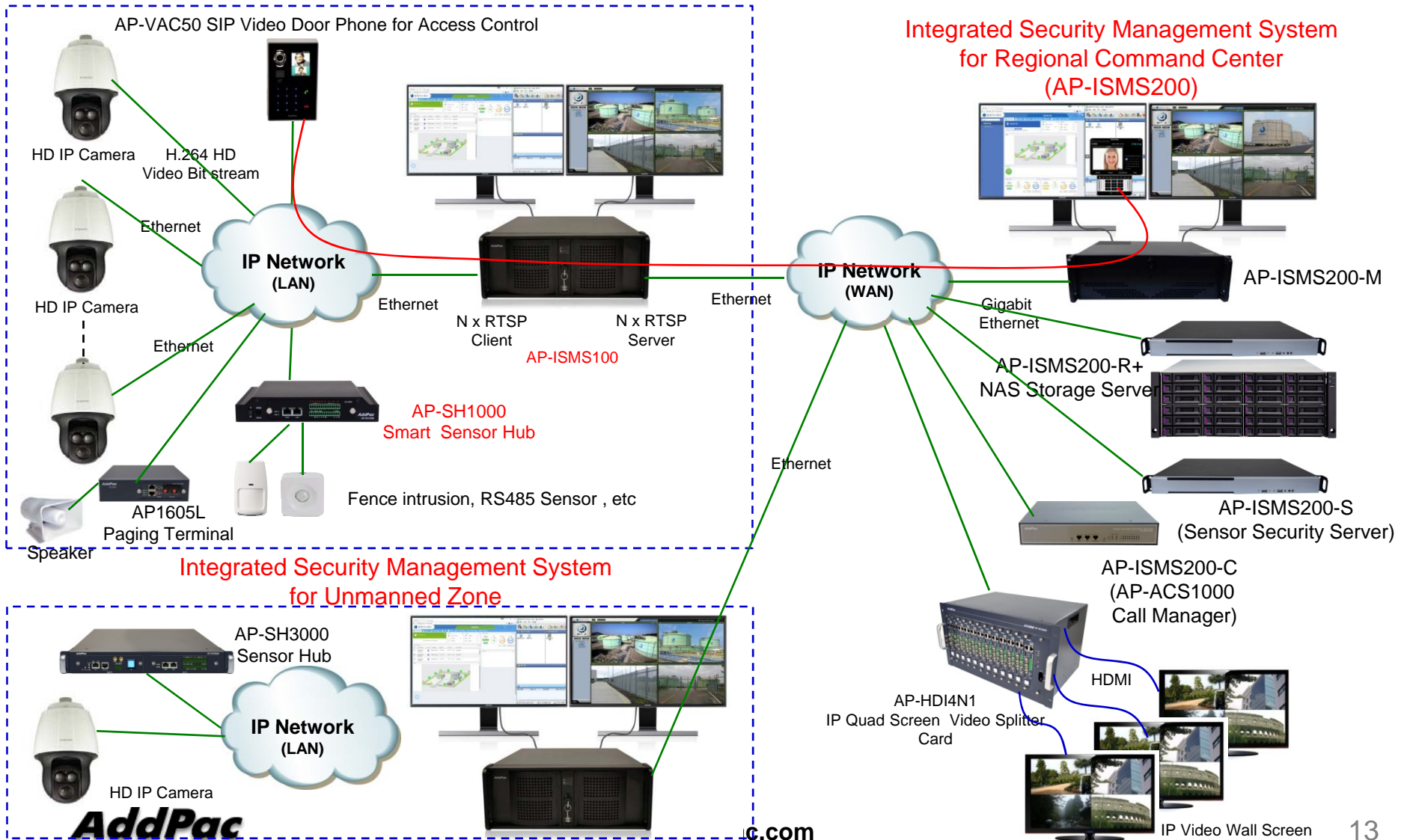
AP-SH1000 Enterprise Smart Sensor Hub for Wired Sensors

- IP packet filtering
- IP access list
- User authentication function
  - Password Authentication Protocol (PAP)
  - Challenge Handshake Authentication Protocol (CHAP)
- Enable/Disable specific protocols
- Auto-square connect of Telnet session
- Account Management function for multi-level user
- SNMP/TELNET/FTP/HTTP/TFTP port assignment function
- SNMP/TELNET/FTP access list management
- Boot mode security checking function



# Standard Application

## AP-SH1000 Enterprise Smart Sensor Hub for Wired Sensors



# Ordering Information

- **AP-SH1000 Enterprise Smart Hub Hardware**
  - AP-SH1000 Enterprise Smart Hub Main Body
  - Sensor Modules : AP-A10R2, AP-A6R4, etc
  - Including Network Cable & Ext. Power Supply, etc.
- **Built-in APOS Internetworking Software for AP-SH1000**
- **Including 1 Year Hardware Warranty**
- **Product Documents**
  - Install and Operation Guide (PDF)
- **Pricing**
  - AddPac Technology Regional Sales Manager
  - Authorized Sales and Marketing Representatives
  - Please Contact [www.addpac.com](http://www.addpac.com)

# Smart Hub Series

# Thank you!

**AddPac Technology Co., Ltd.**  
Sales and Marketing

Phone +82.2.568.3848 (KOREA)

FAX +82.2.568.3847 (KOREA)

E-mail [sales@addpac.com](mailto:sales@addpac.com)