

AP-HNR2000L

Large Storage Onvif based HD NVR Solution



Product Overview

AddPac

AddPac Technology

Sales and Marketing

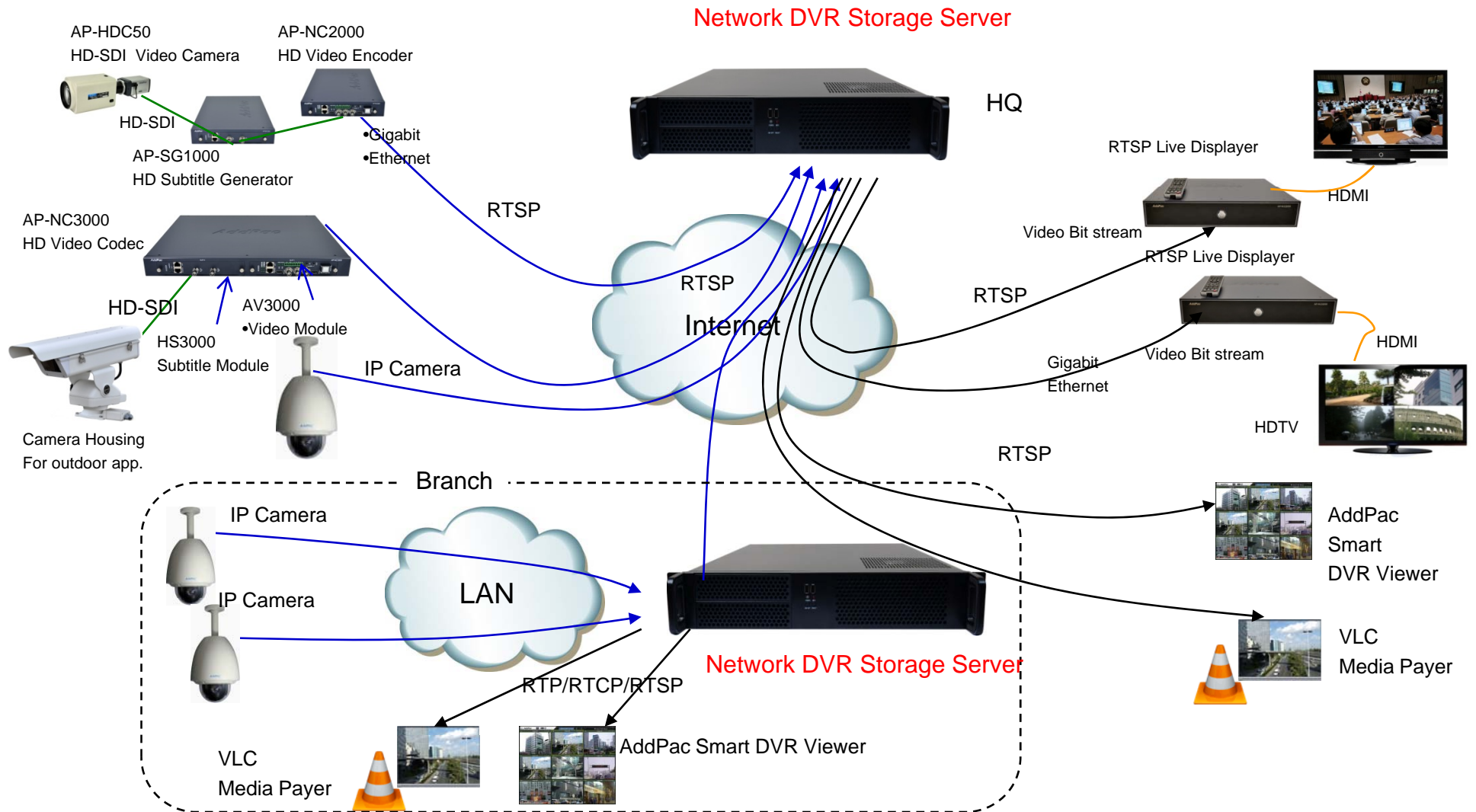
www.addpac.com

Contents

- Network Diagram
- Product Overview
- NVR Server S/W Block Diagram
- Hardware Specification
- Smart DVR Viewer



NVR Storage Server Service Diagram



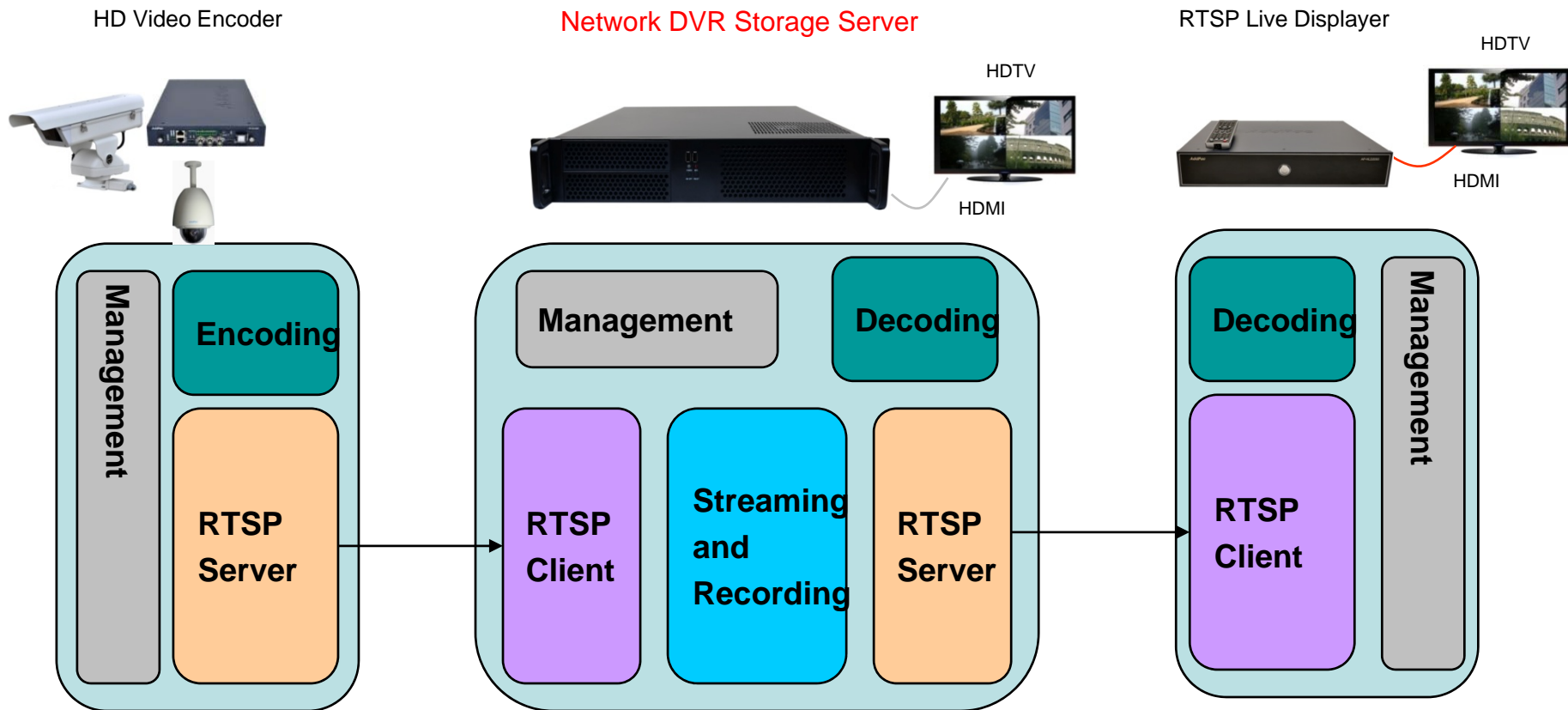
Product Overview

AP-HNR2000L Large Storage HD NVR

- CCTV NVR Service
- Window based Operating System
- High-Performance Full HD, HD, SD Network DVR
- H.264,MJPEG Video Codec
- Onvif Standard based IP Camera, Video Codec Support
- RTSP Standard Video Streaming Protocol Support
- Full HD, HD, D1 Video Resolution Support
- Video Out : HDMI, DVI Interface
- HD Video Recording and Streaming Service
- **Internal Streaming Server Software Package (Option)**
- **Internal MAP based CCTV Management Package (Option)**
- Onvif based IP Voice Paging Software Package (Option)
- Smart DVR Viewer Support (MS-Window S/W)
- Smart DVR Manager Support (MS-Window S/W)
- File Back Manager Support (MS-Window S/W)
- Powerful Management and User Friendly Features
- High-performance Audio and Video Service
- Firmware Upgradeable Architecture

NVR Storage Server Protocol Block Diagram

Small Scale Network DVR Solution (All in One)



Hardware Specification

AP-HNR2000L Large Storage HD NVR

- AP-HNR2000L Management System
- High Performance Computing Power
- Main Chassis
 - Network Interface
 - One(1) 10/100/1000Mbps Gigabit Ethernet
 - Video Output Interface
 - HDMI, DVI Video Output
 - USB 2.0 Interfaces for Mouse, Keyboard, etc
 - SATA Hard Disk : Up to 6Ea (Ex : 8Tera HDD x 6 = 48 Tera)



Hardware Specification

AP-HNR2000L Large Storage HD NVR

Front Side



On/Off Switch

USB Interface for Backup

Hardware Specification

AP-HNR2000L Large Storage HD NVR

Back Side

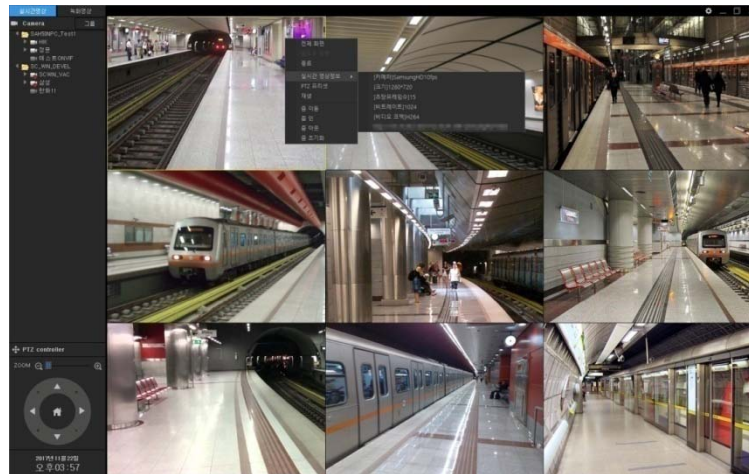


Power Input

USB Interface for Mouse, Keyboard, Backup

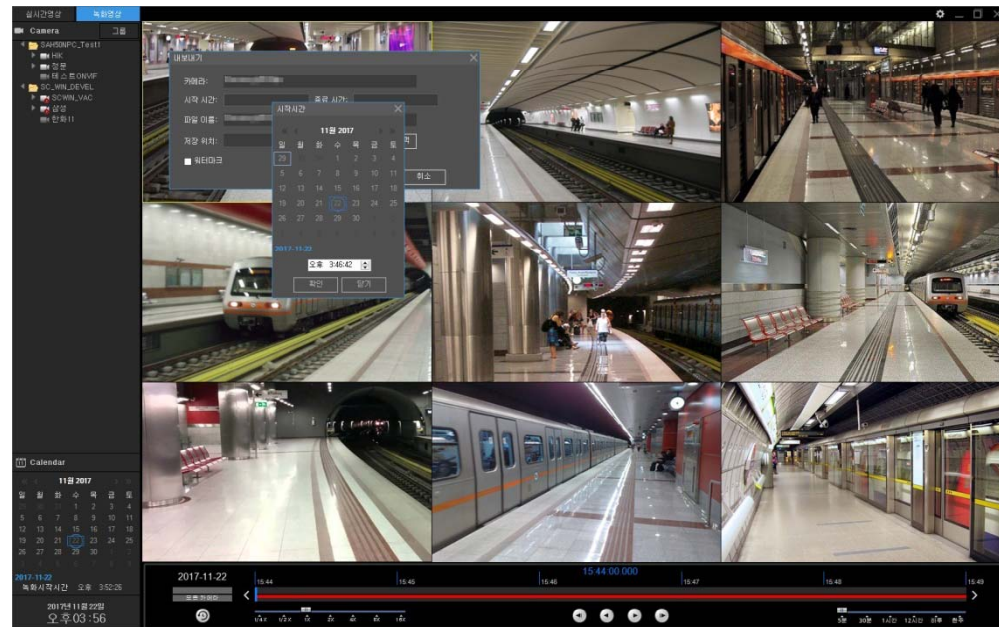
Video Card Interface

Smart DVR Viewer



Contents

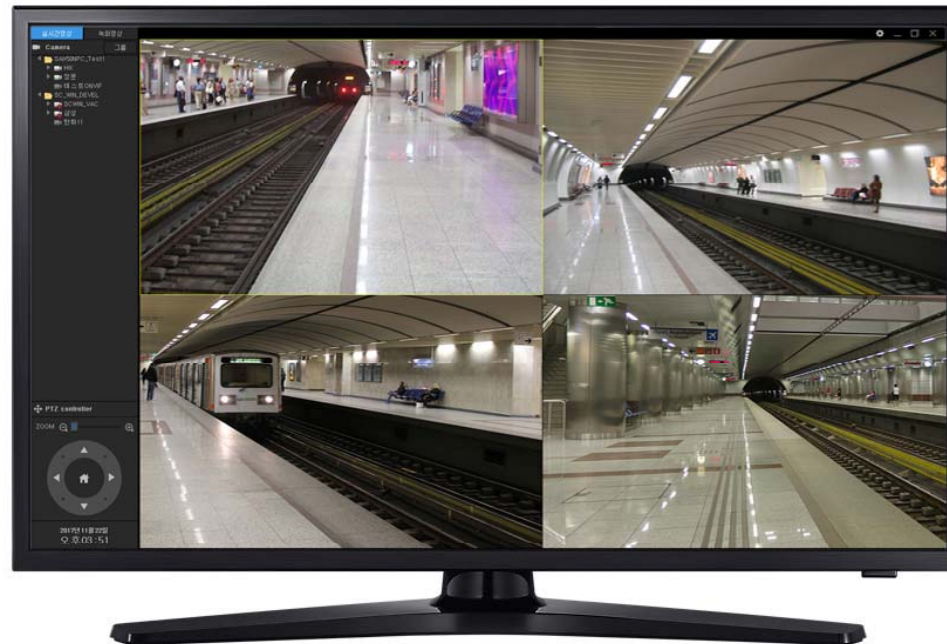
- New Smart DVR Viewer Overview
- UI Design (examples)



New Smart DVR Viewer Overview

- IP based Multi-Channel Video Streaming Displayer (Live, Recording)
- **Onvif Protocol Support**
- RTSP/RTP Video Streaming Protocol Support
- H.264(1080P, 720P) HP/MP/BP Video Codec Support
- MPEG4, MJPEG Video Codec Support (Option)
- Full HD (1080P), HD(720P), D1 Video Resolution Support
- Four(4) or One(1) Channel Video Layout (Video Splitter)
- Option : Nine(9), Sixteen(16) Channel Video Layout (Video Splitter)
- 4ch Layout , 1ch Layout Display (Round Robin Display)
- Video Solution with Outstanding Network Service Capability
- MS-Window based Software Platform
- Dark and Black Design Concept

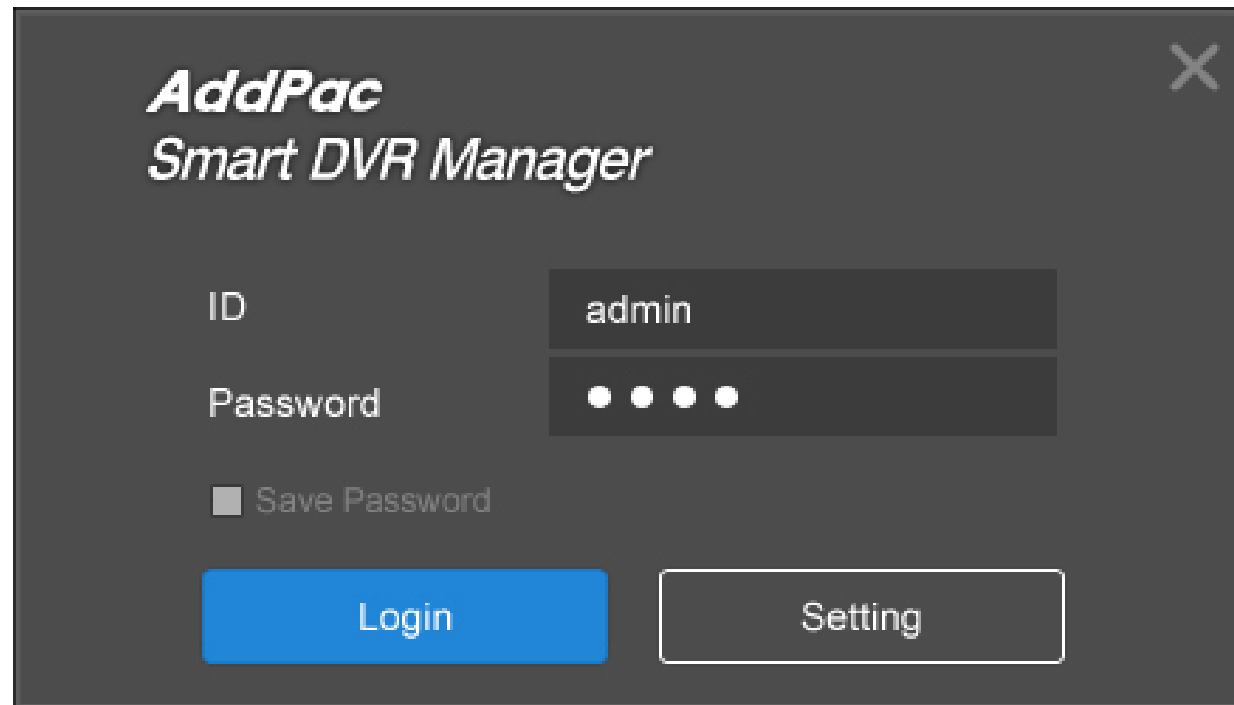
UI Design & Examples



Contents

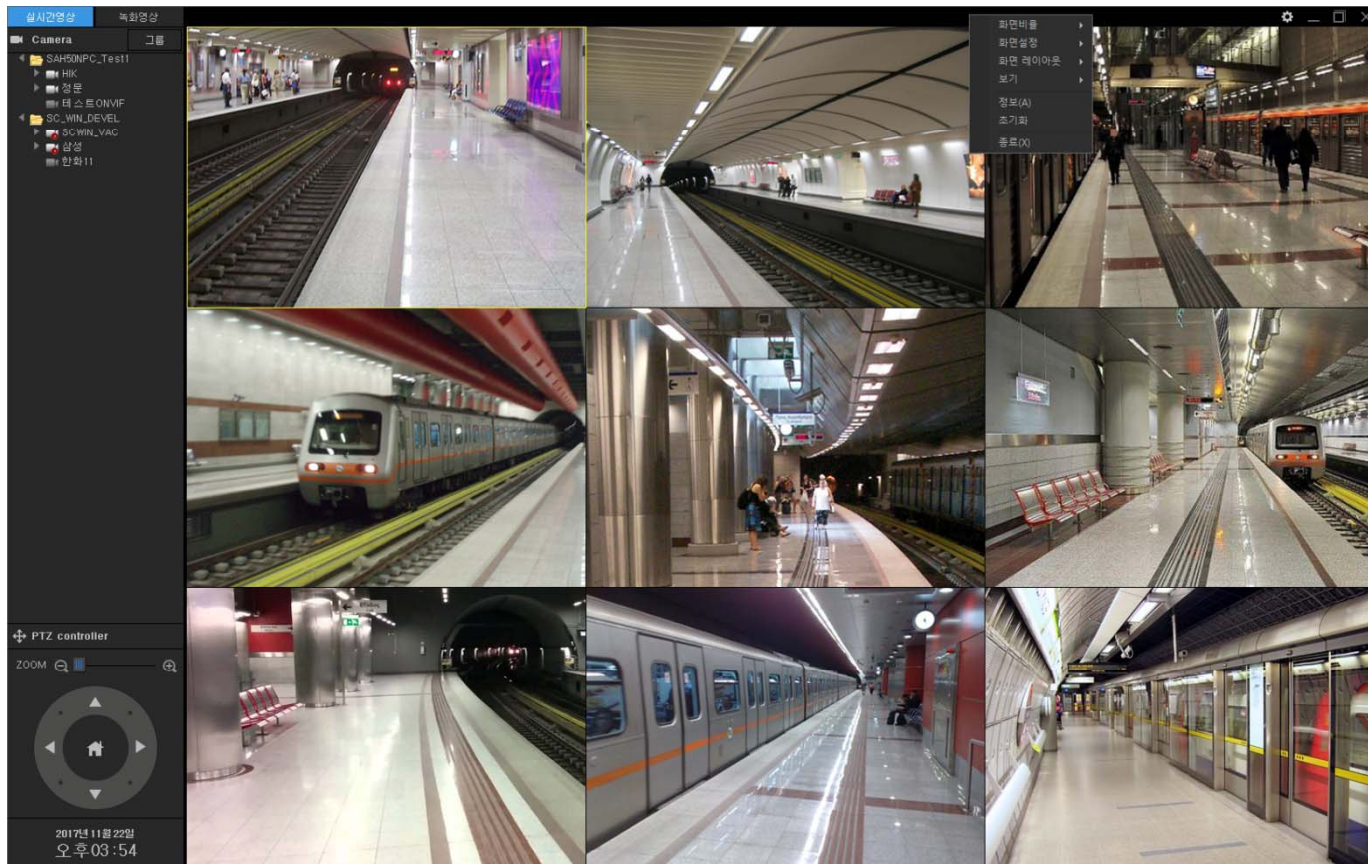
- Login View, Main View
- Top Side Menu : Menu Bar Hidden
- Menu bar Hidden : 4channel Video Splitter (Example)
- Live View Display Channel Layout
- Display Aspect Ratio Config.
- Subtitle Display Position Config.
- Live View Camera Config.
- Live View Camera PTZ Preset, Preset Move
- Live View Camera Real-time Video Information Display
- Live View (1,4,9,16) Example
- Recording View PopMenu, Video Export Menu
- Recording View (1,4,9) Example

UI examples : Login

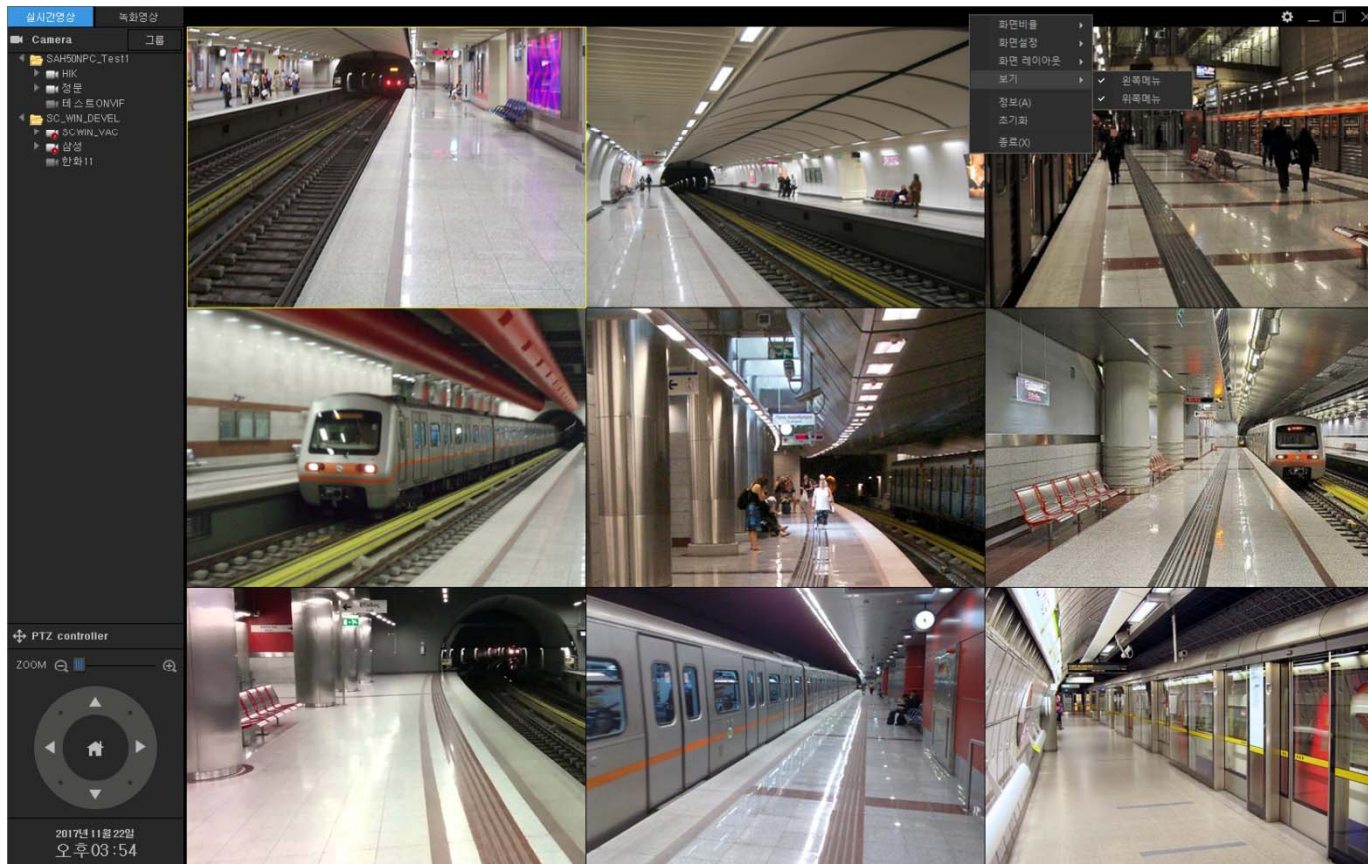


The image shows a dark-themed login window for 'AddPac Smart DVR Manager'. The window has a title bar with the text 'AddPac Smart DVR Manager' and a close button (X) in the top right corner. Below the title, there are two input fields: 'ID' with the text 'admin' and 'Password' with four dots representing a masked password. Below the password field is a checkbox labeled 'Save Password' which is currently unchecked. At the bottom of the window, there are two buttons: a solid blue 'Login' button and a white-outlined 'Setting' button.

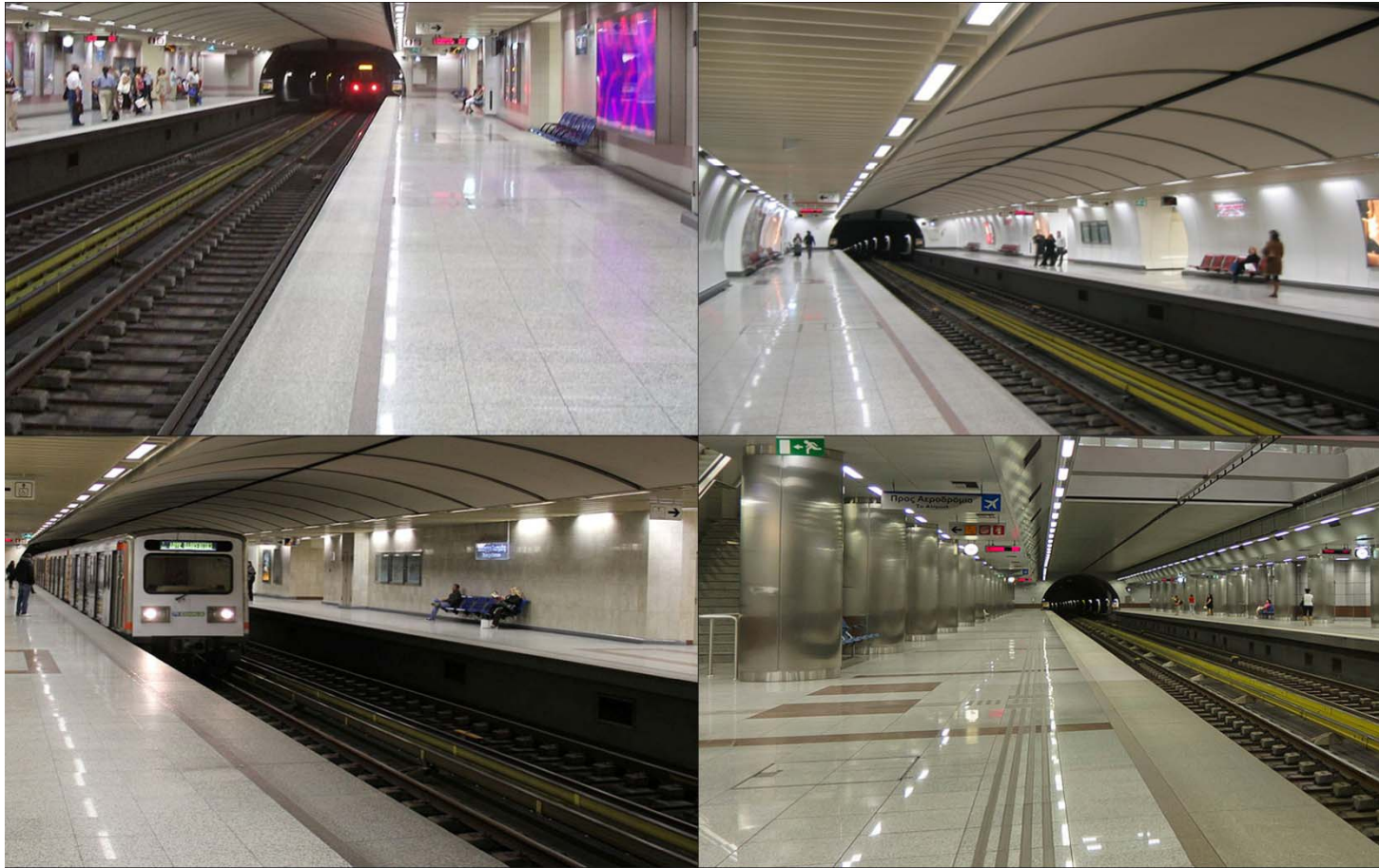
UI examples : Top Side Menu



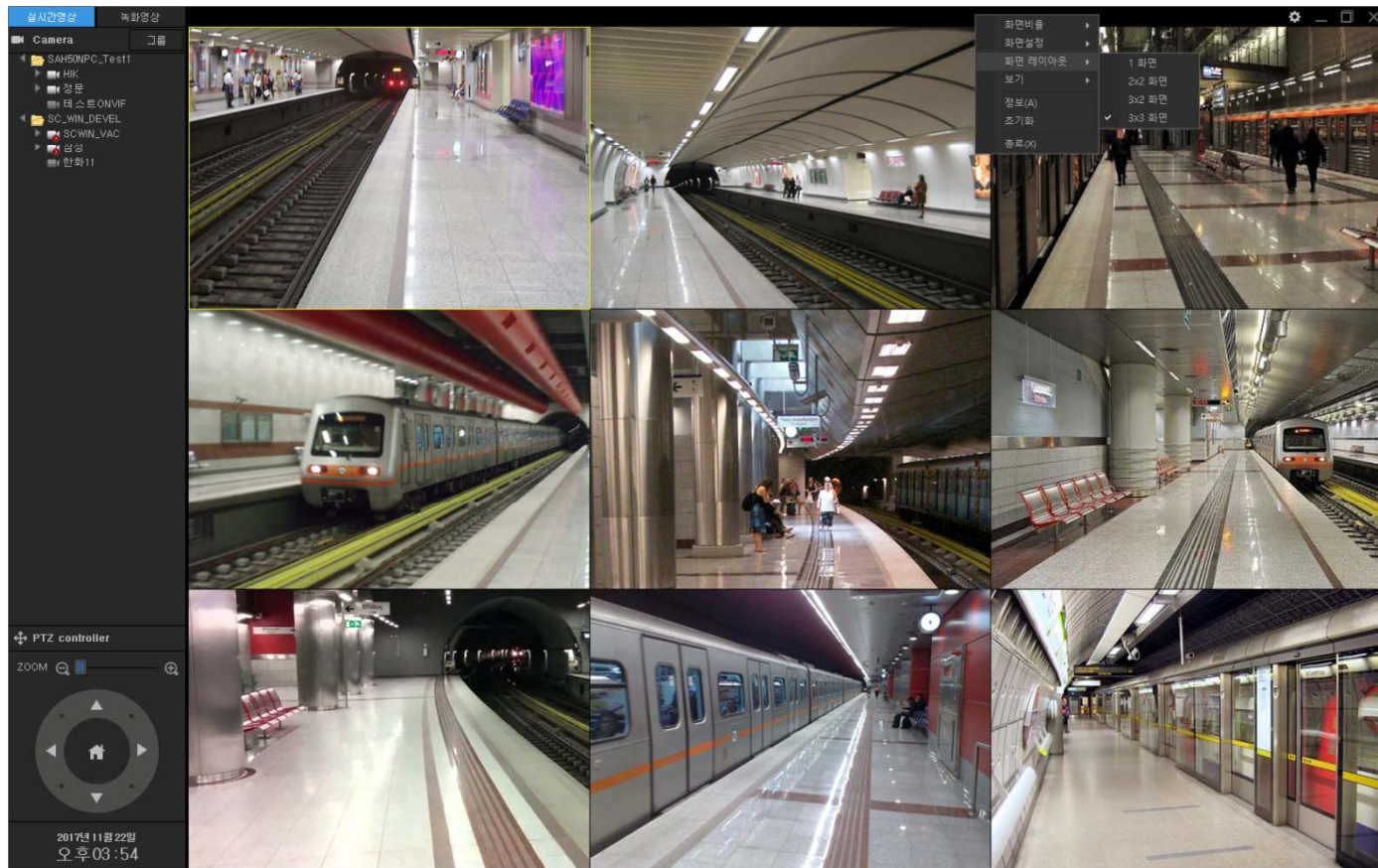
UI examples : Top Side Menu (Hidden)



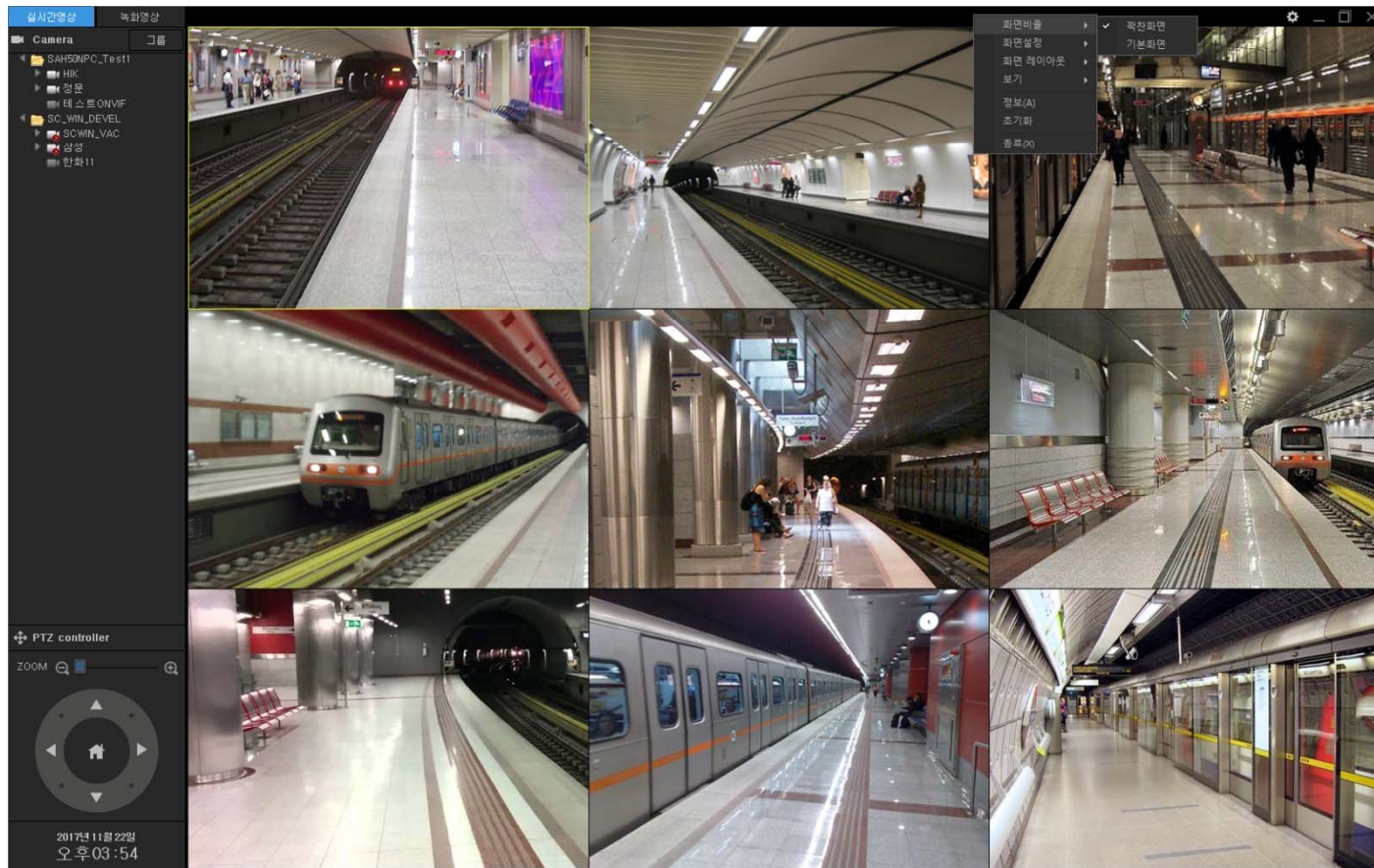
UI examples : Top Side Menu (Hidden, 4Channel Video Splitter)



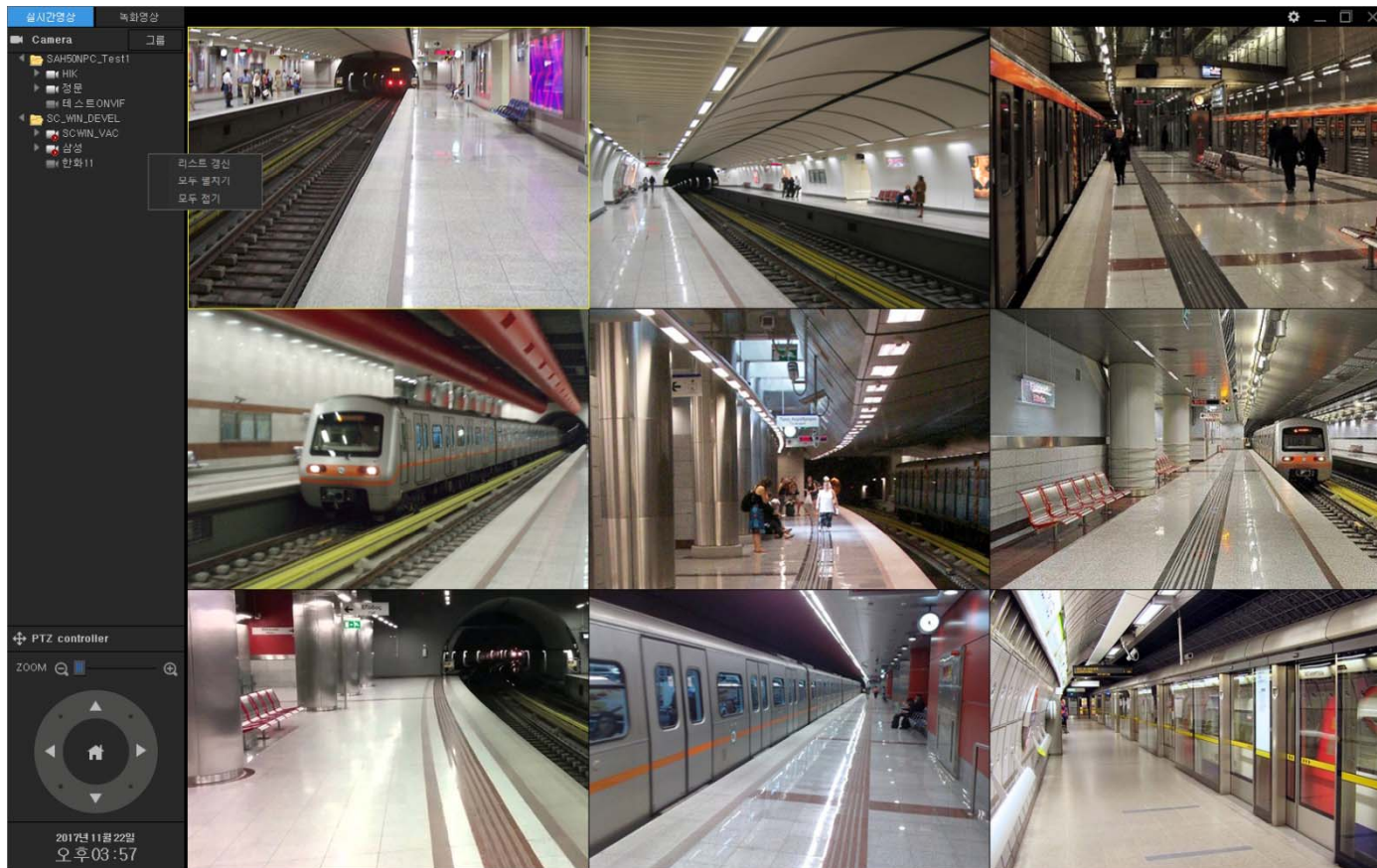
UI examples : Top Side Menu (Layout)



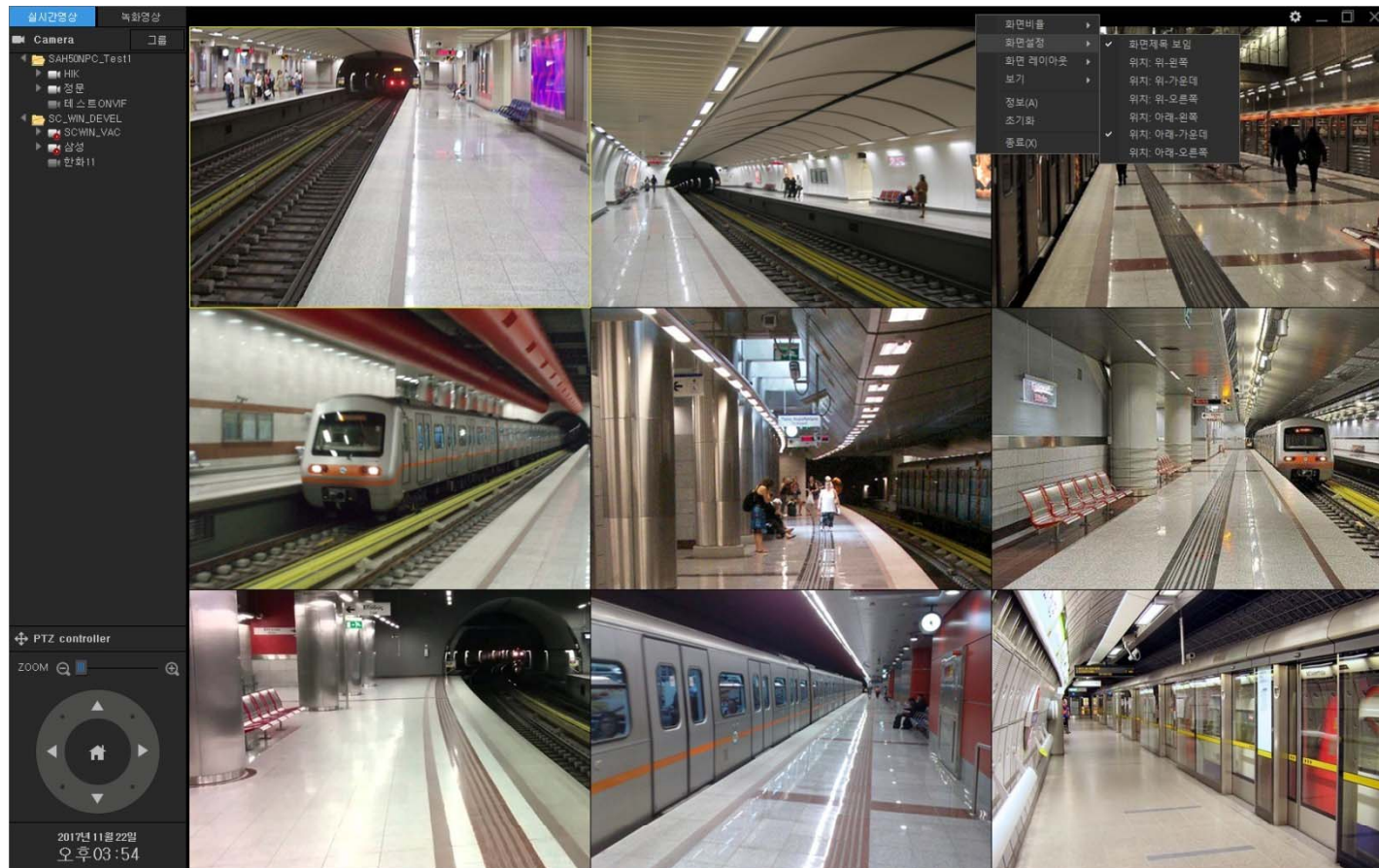
UI examples : Top Side Menu (Aspect Ratio)



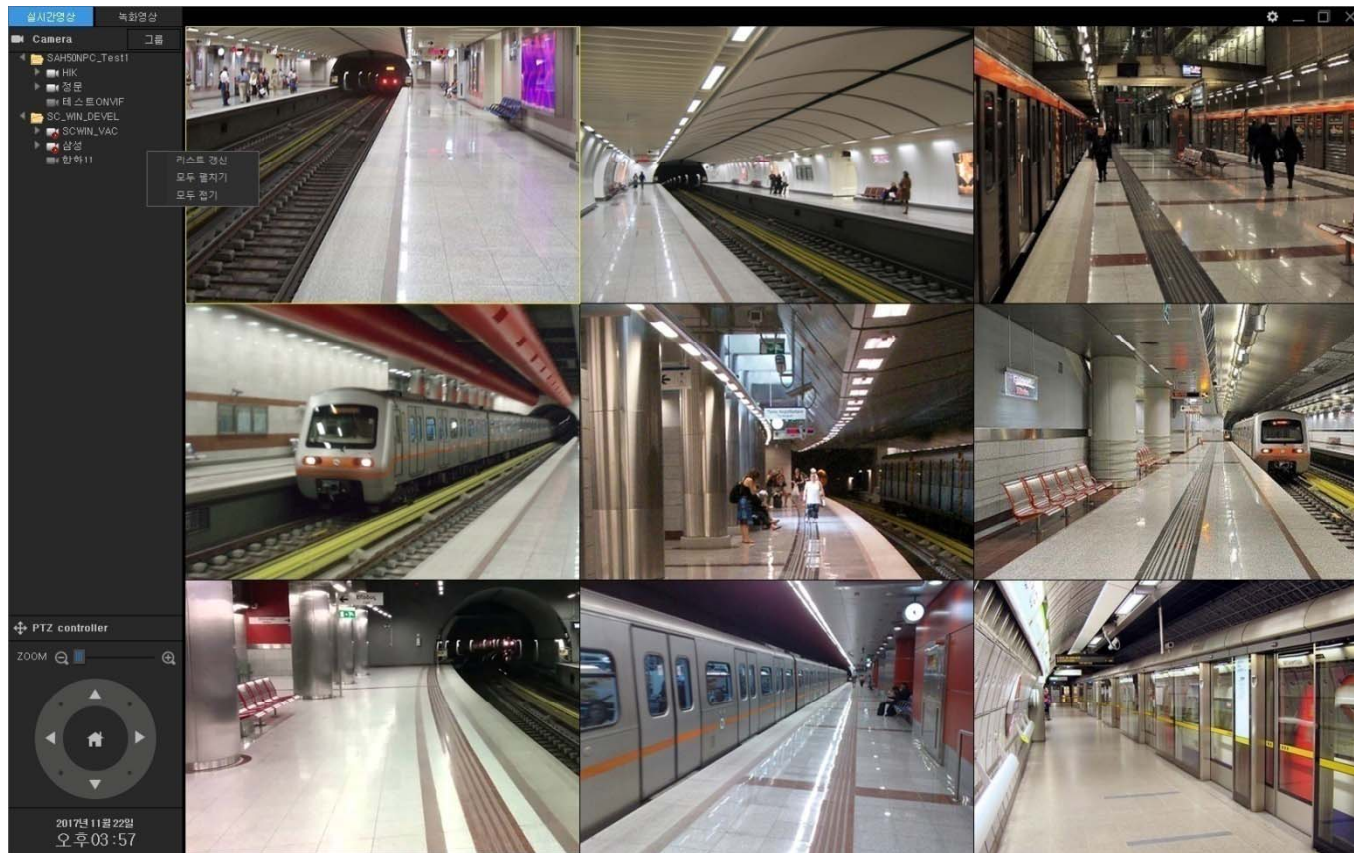
UI examples : Top Side Menu (Aspect Ratio)



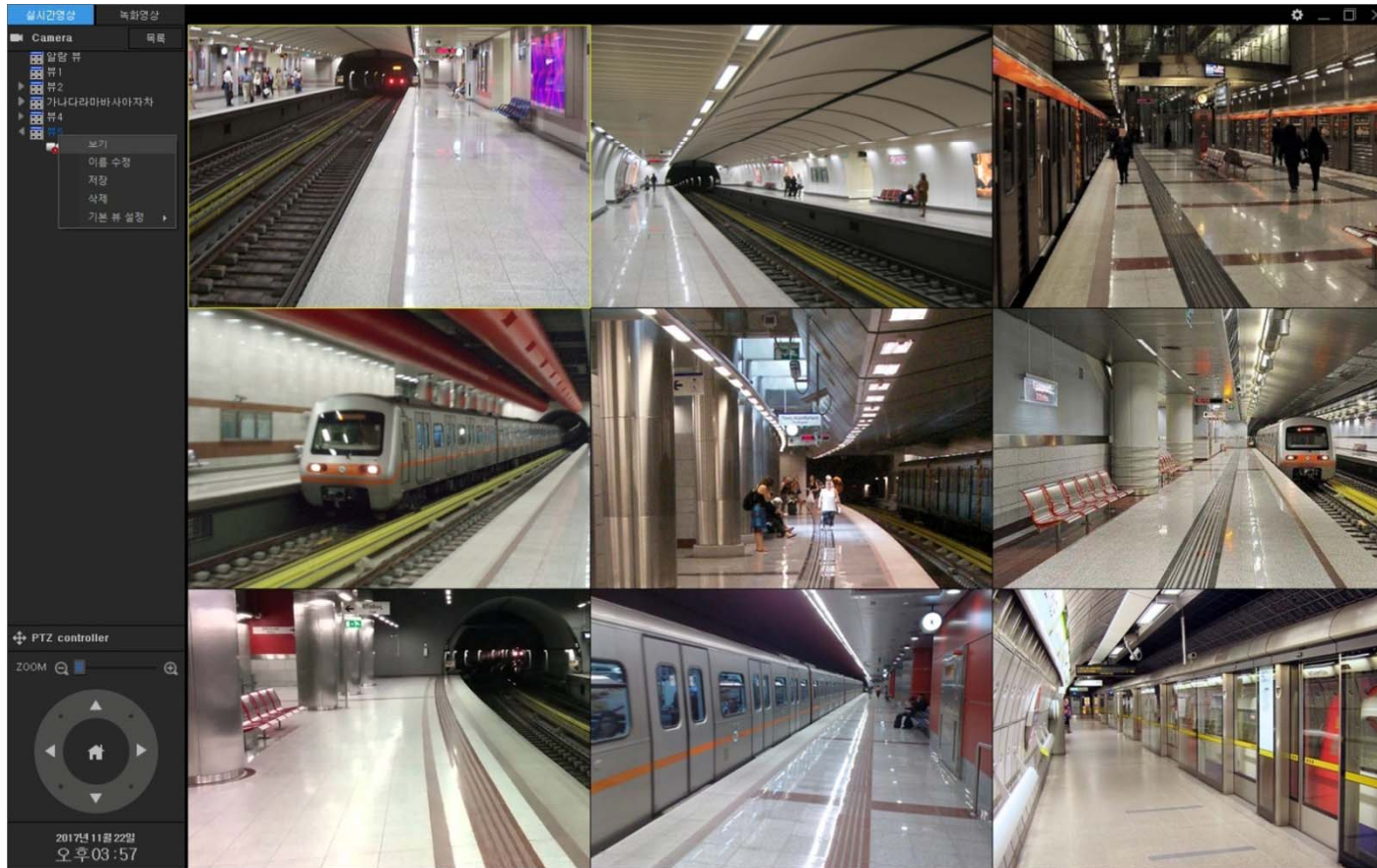
UI examples : Top Side Menu (Title Bar Position)



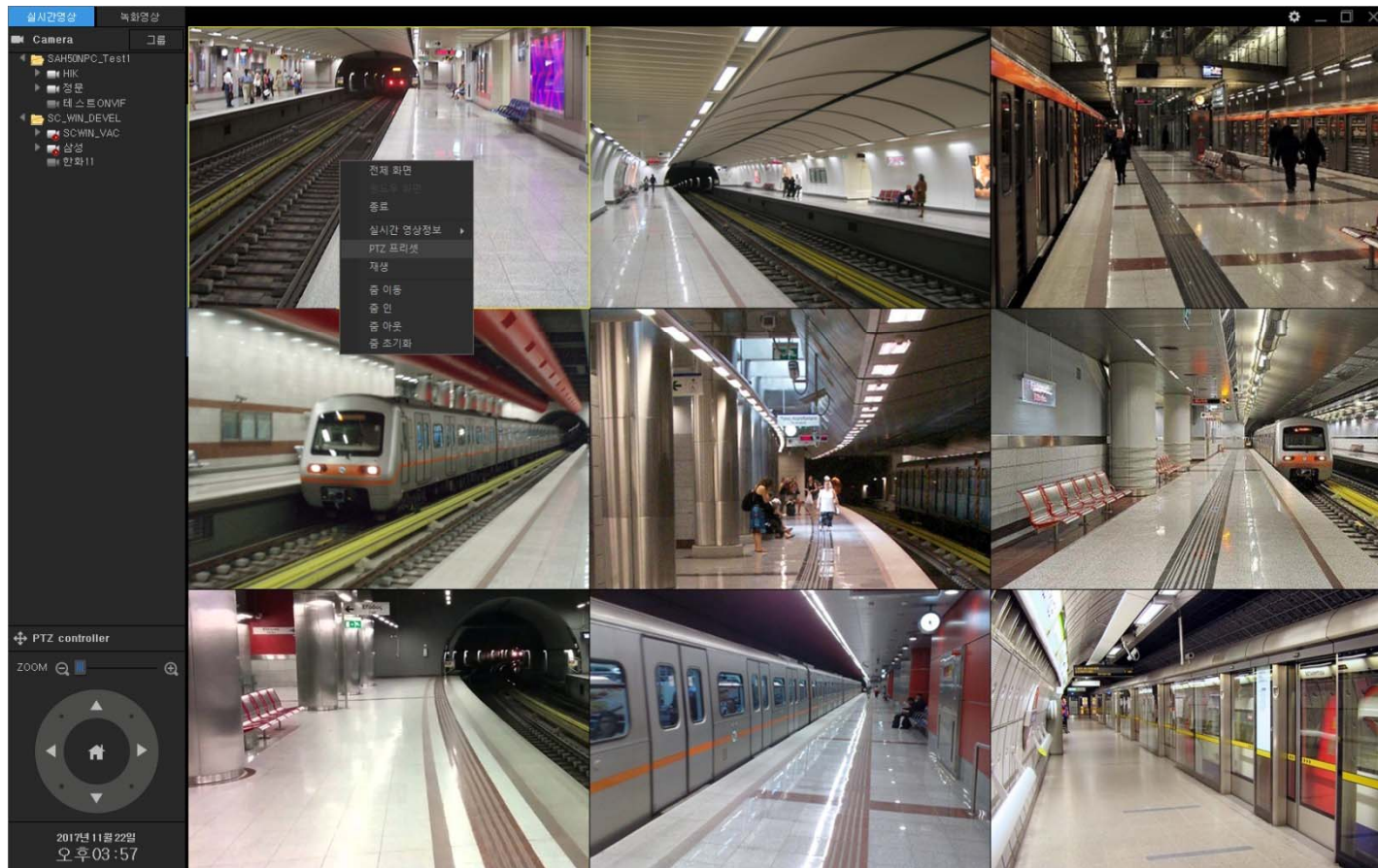
UI examples : Live Viewer



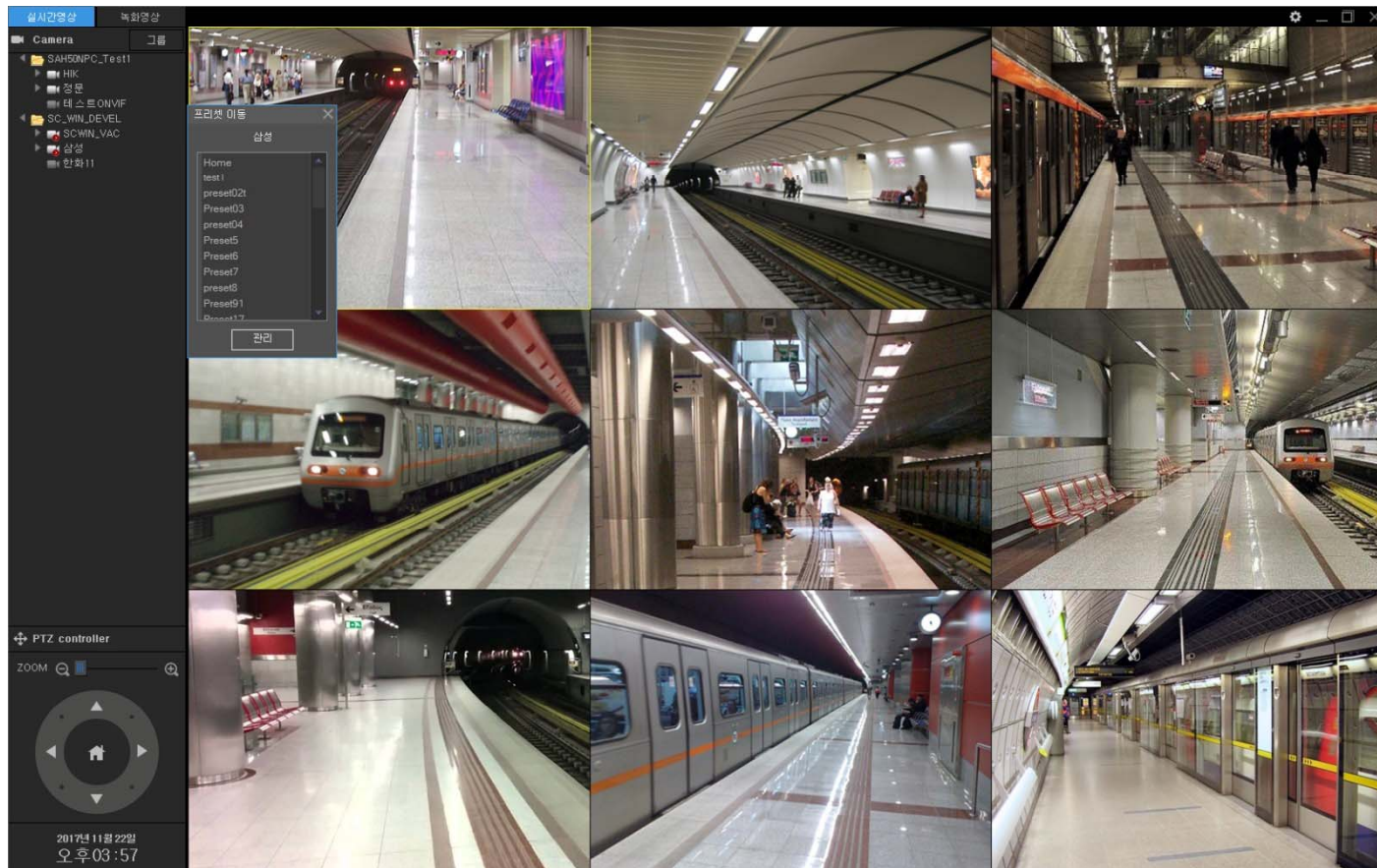
UI examples : Live Viewer (Camera Configuration)



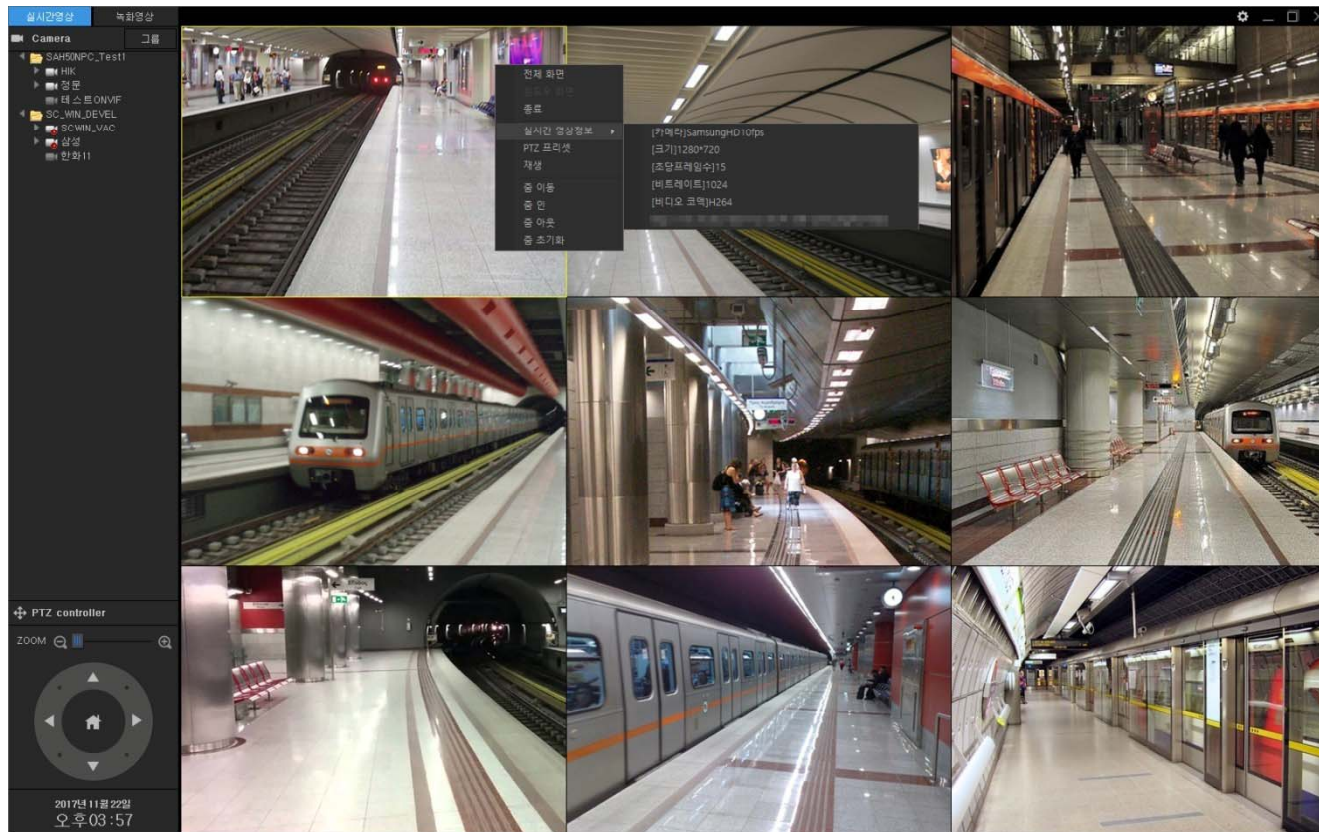
UI examples : Live Viewer (PTZ Preset)



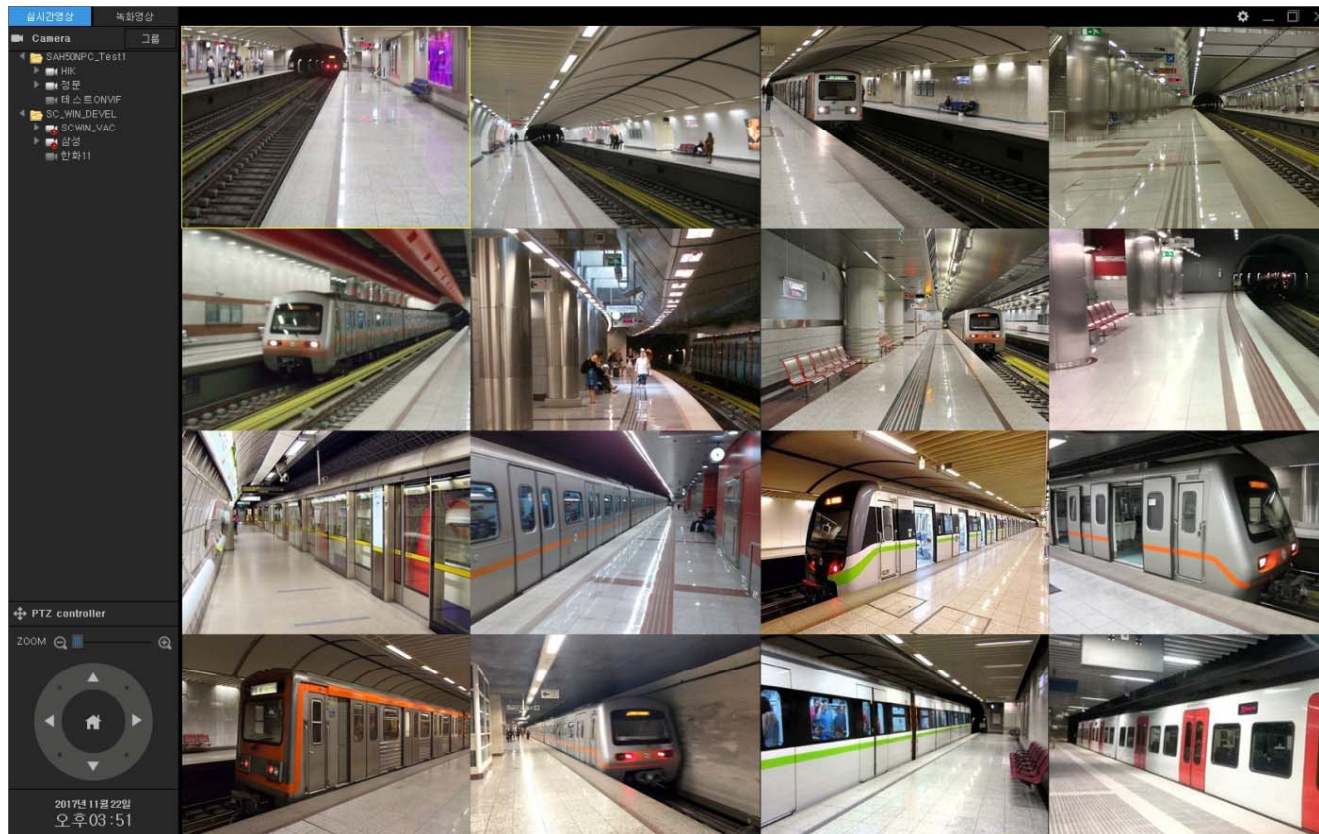
UI examples : Live Viewer (PTZ Preset Move)



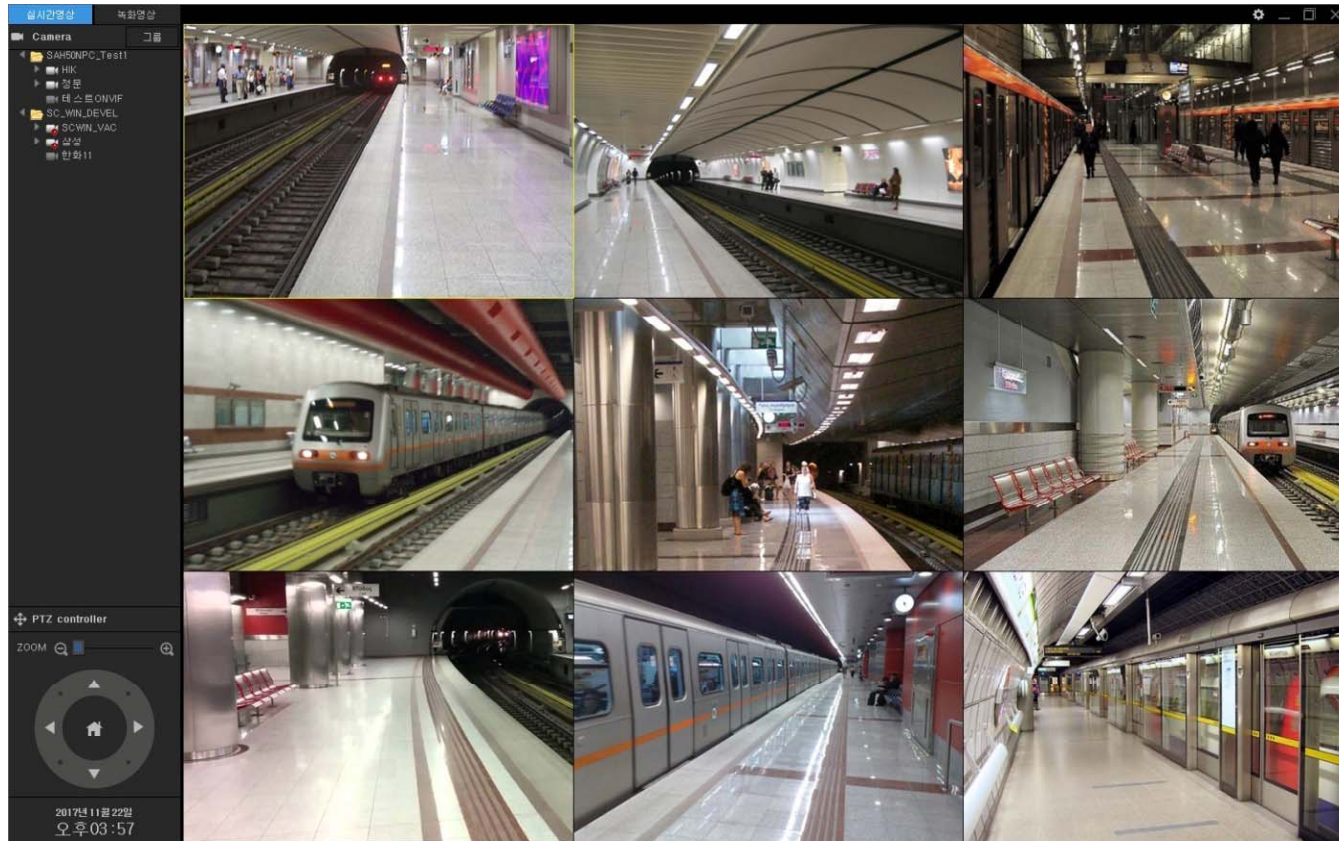
UI examples : Live Viewer (Real-time Video Information Display)



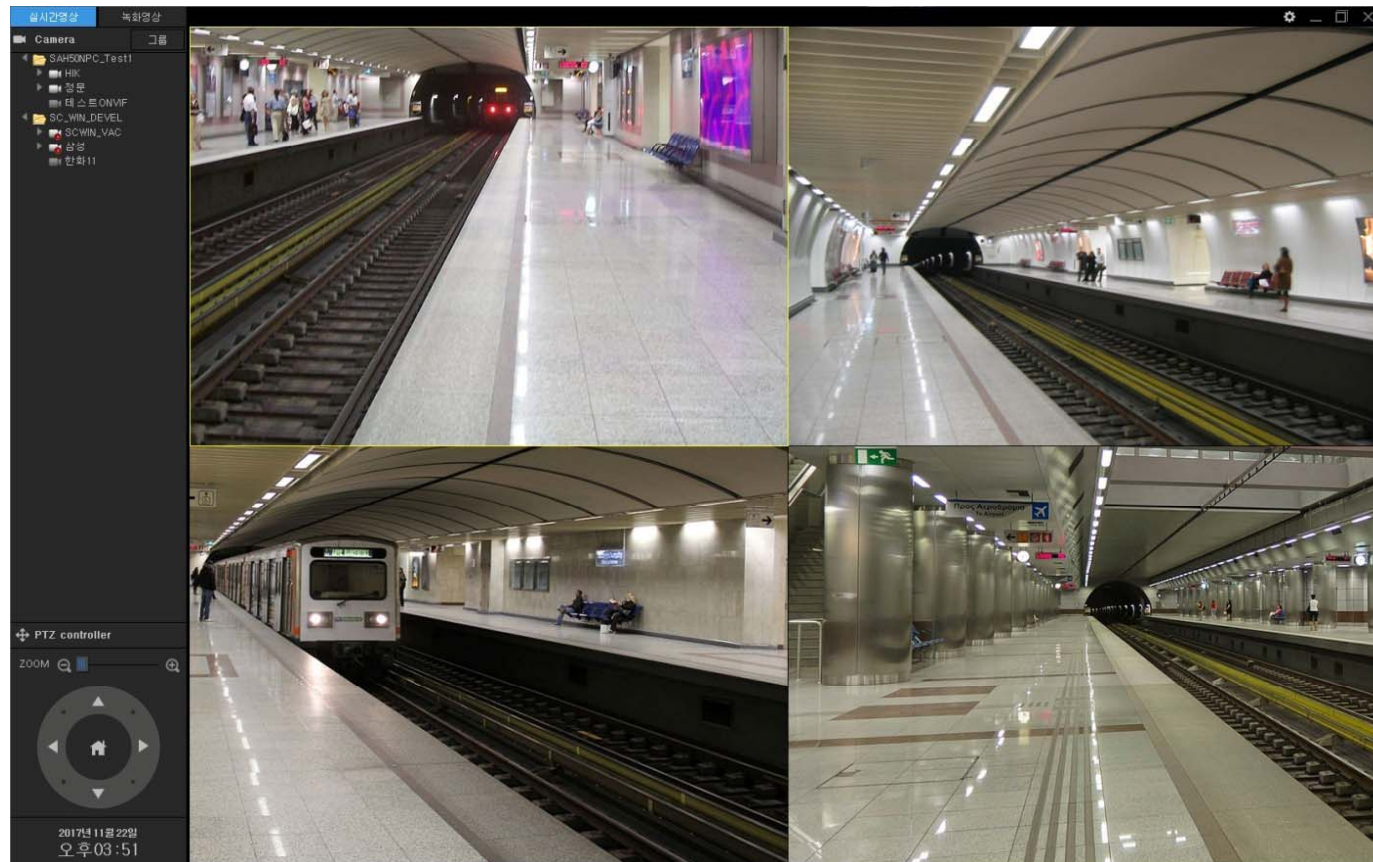
UI examples : 16 Channel Live View



UI examples : 9 Channel Live View



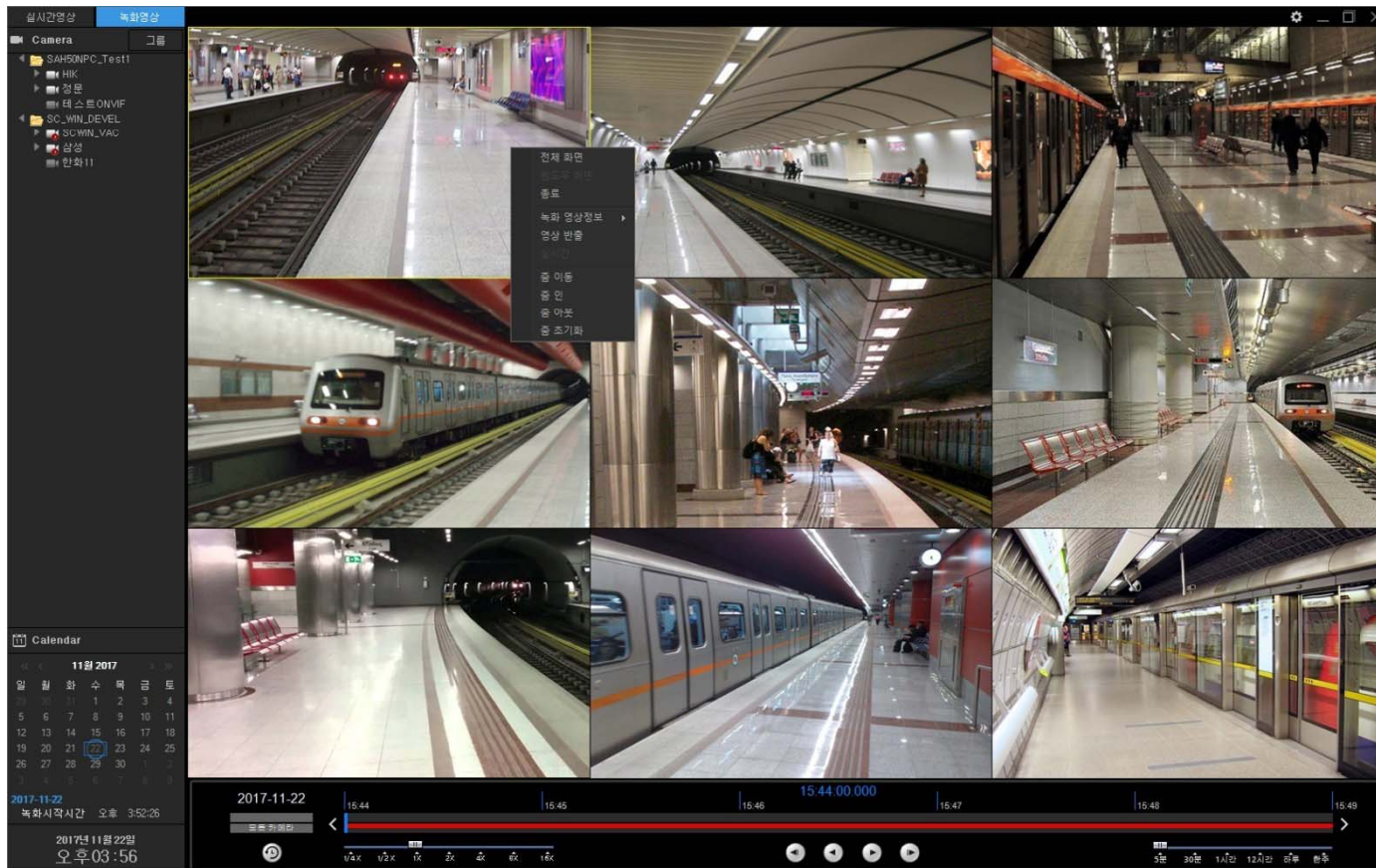
UI examples : 4 Channel Live View



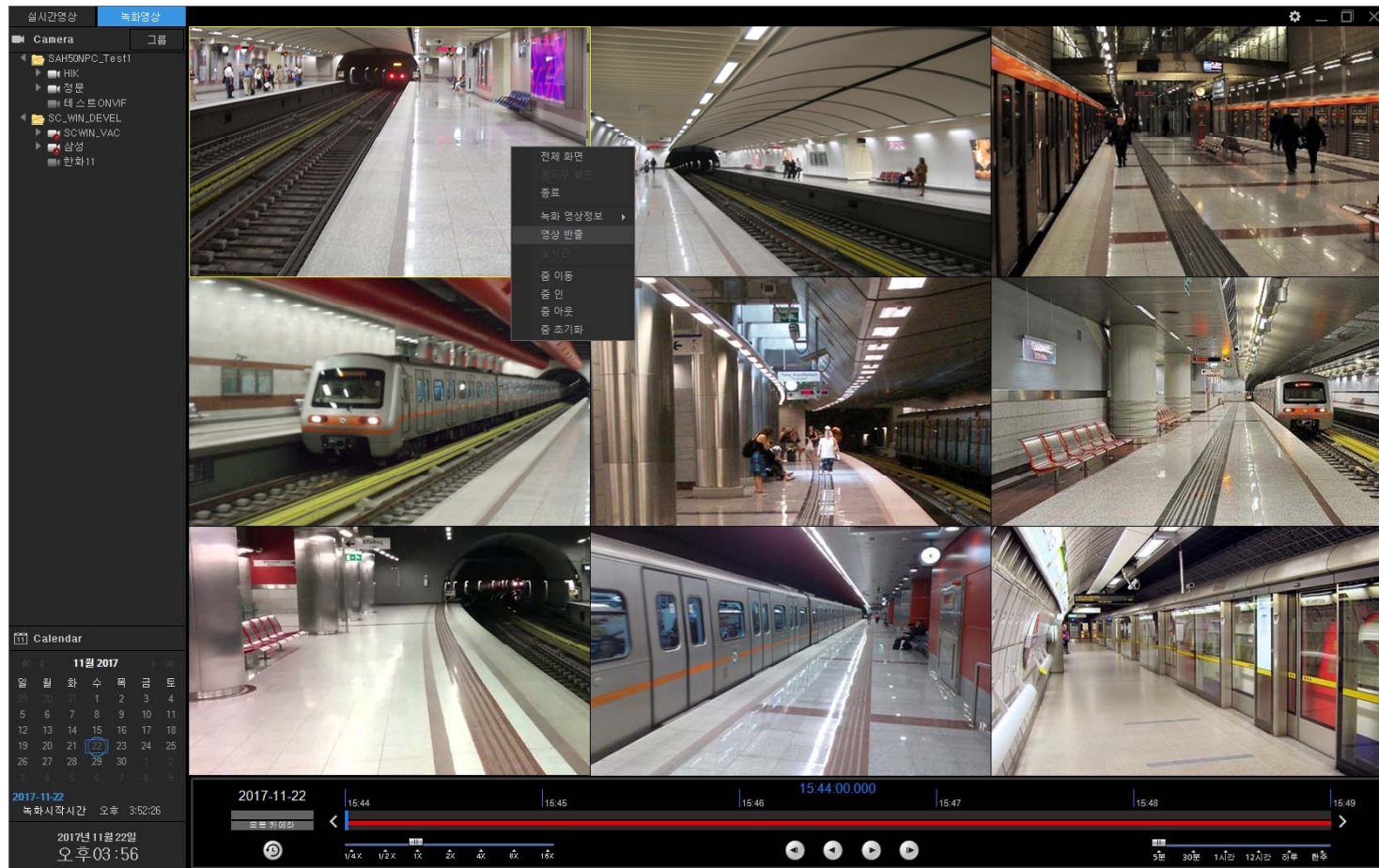
UI examples : 1 Channel Live View



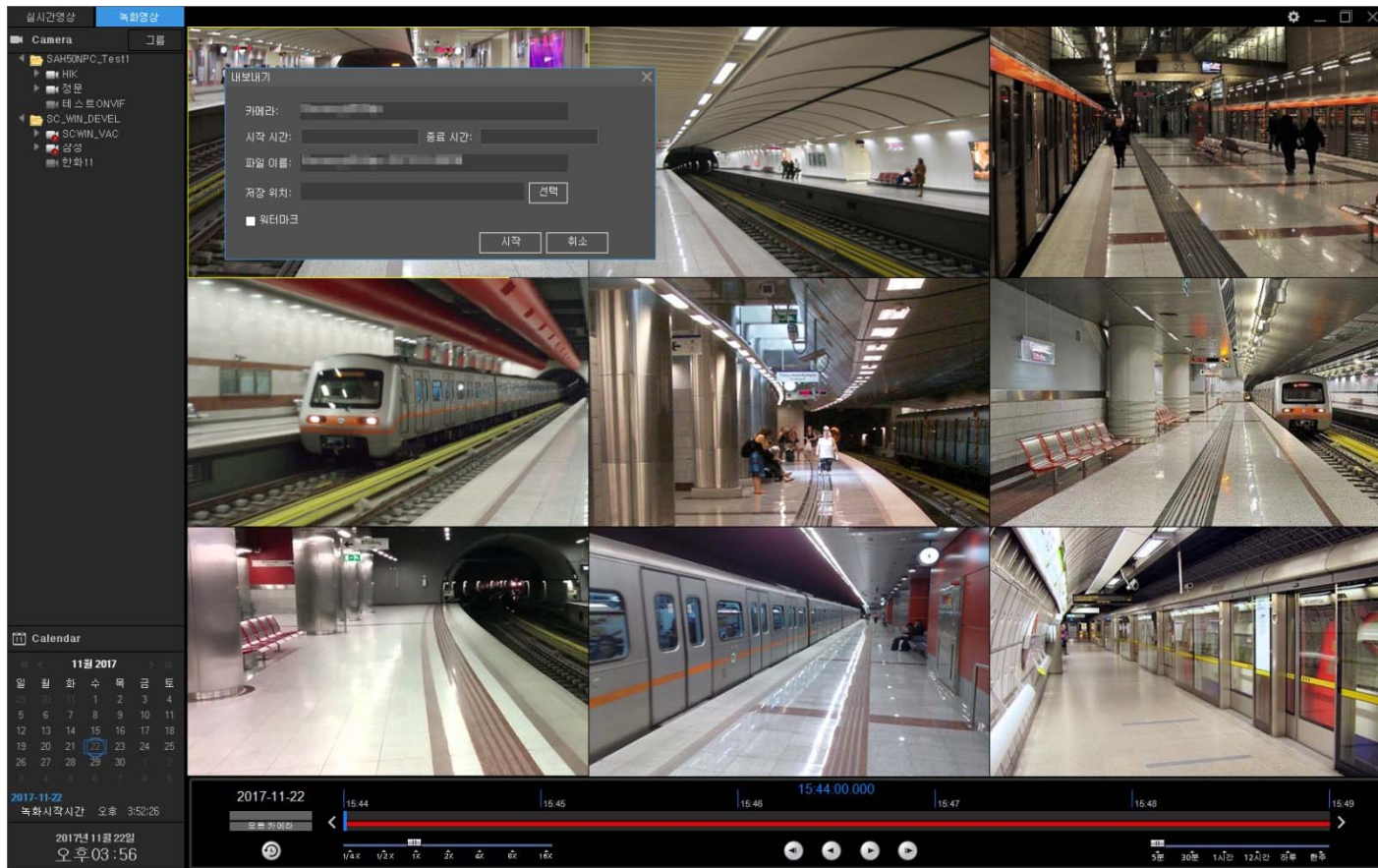
UI examples : Recording Viewer (Popup Menu)



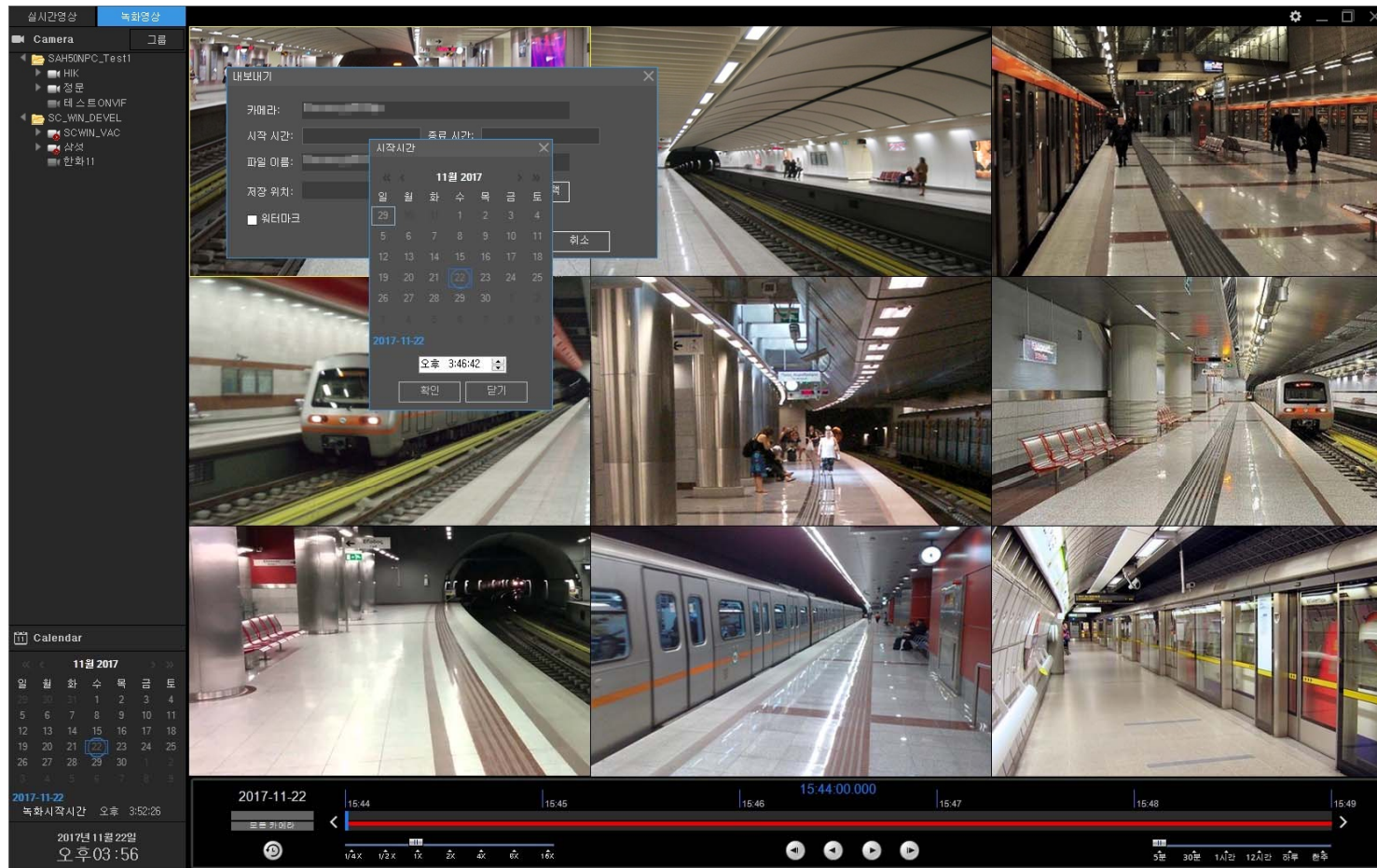
UI examples : Recording Viewer (Video Export)



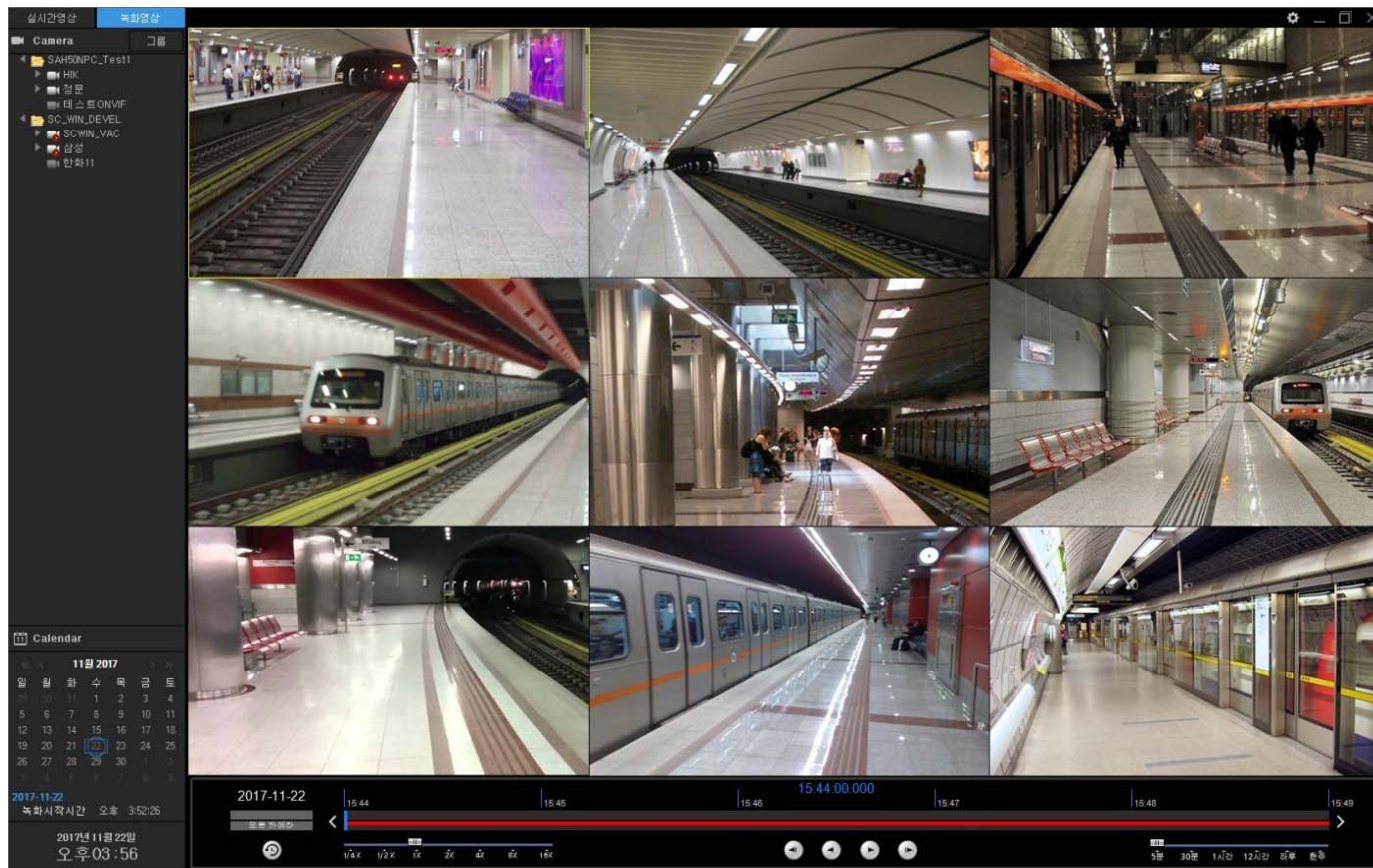
UI examples : Recording Viewer (Video Export)



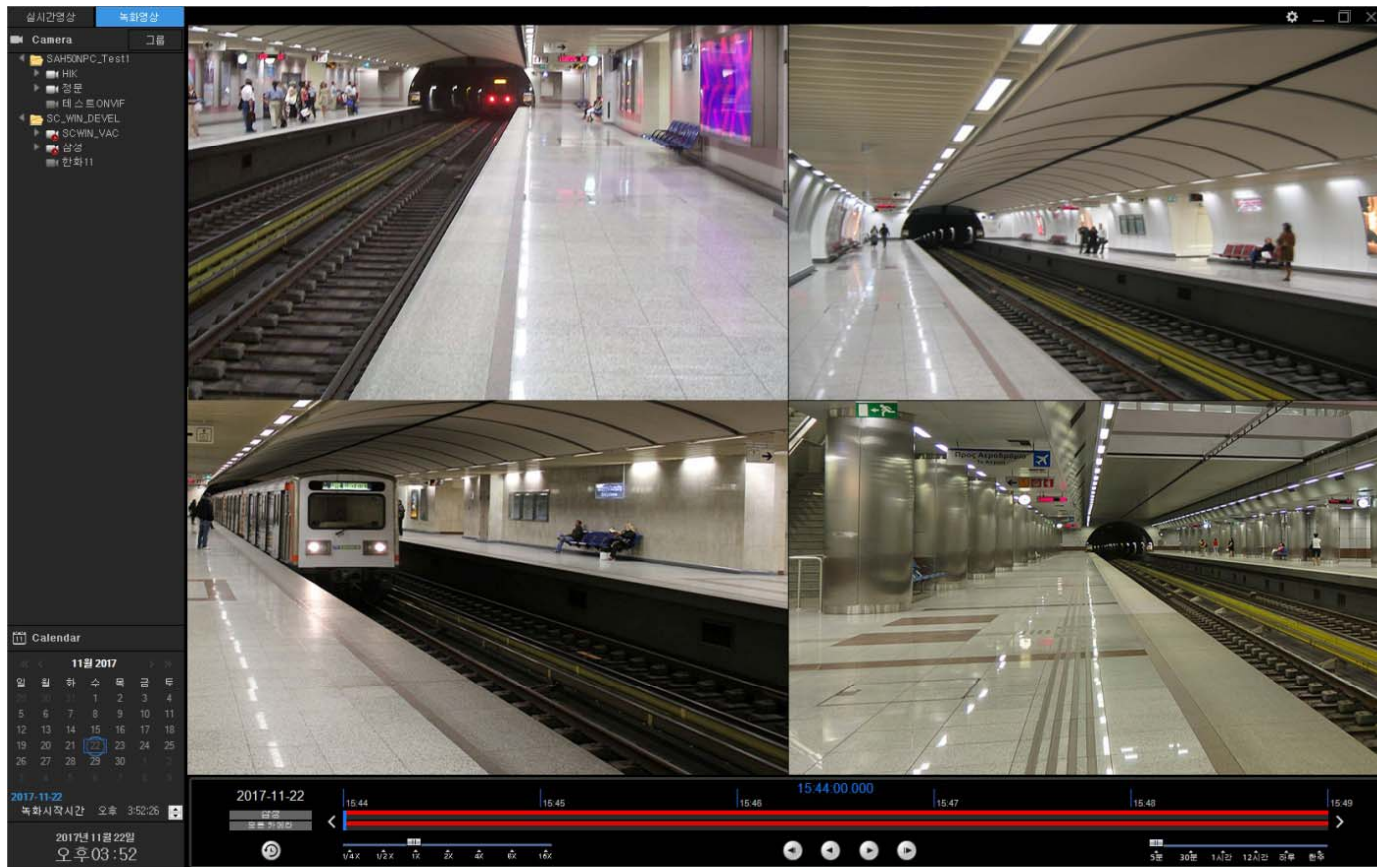
UI examples : Recording Viewer (Video Export)



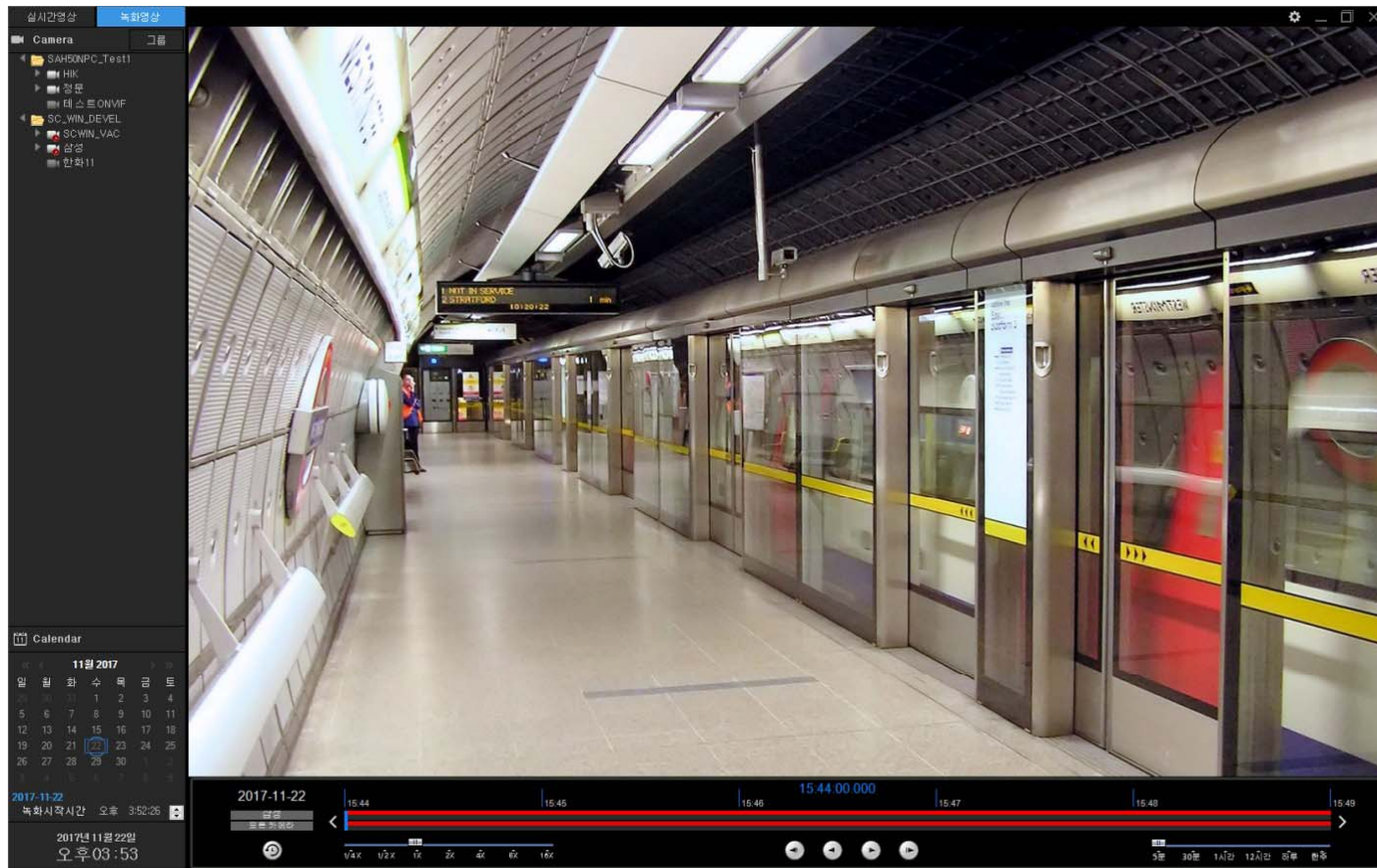
UI examples : 9 Channel Recording View



UI examples : 4 Channel Recording View



UI examples : 1 Channel Recording View





Thank you!

AddPac Technology Co., Ltd.
Sales and Marketing

Phone +82.2.568.3848 (KOREA)

FAX +82.2.568.3847 (KOREA)

E-mail sales@addpac.com