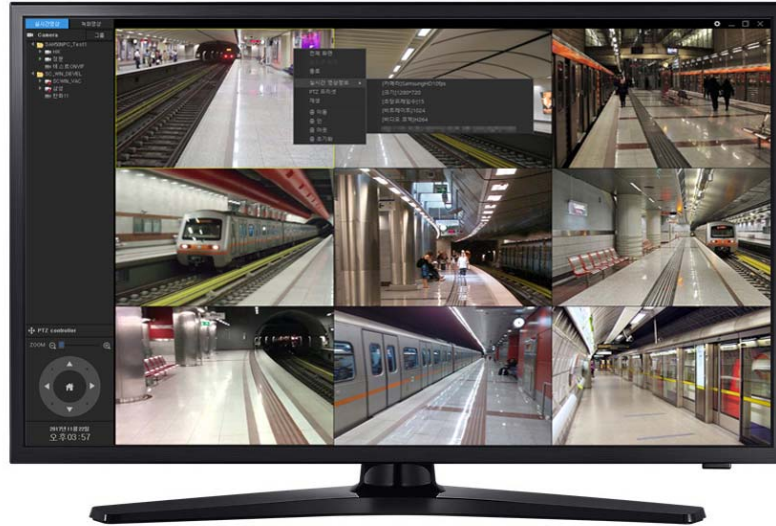


# Ethernet Interface Bonding for RTSP Streaming Server Channel Increment



***AddPac***

**AddPac Technology**

Sales and Marketing

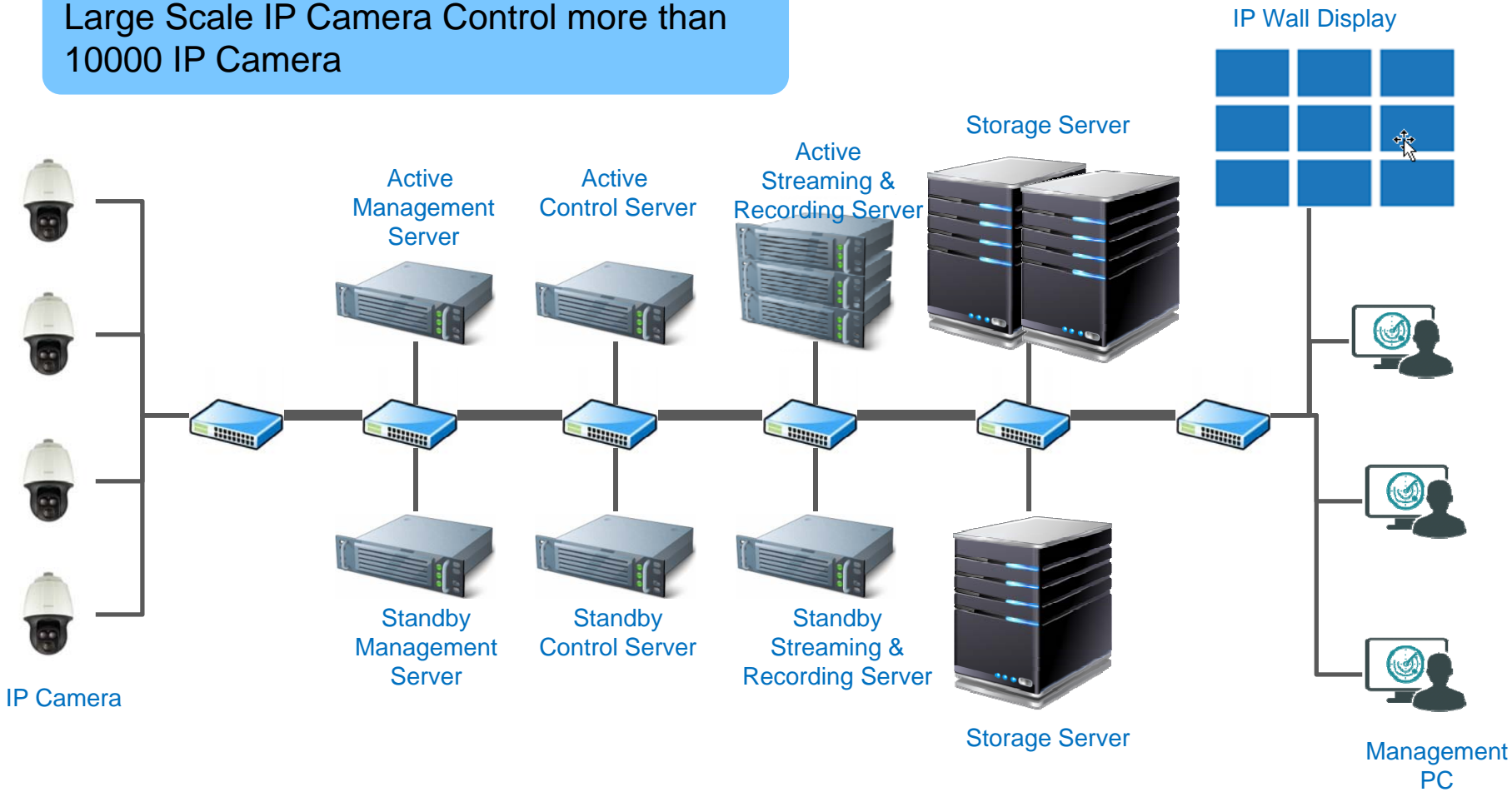
# Contents

- Network Service Diagram
- RTSP Streaming Server Bandwidth Estimation
- Ethernet Interface Bonding (1G x 2) Procedures for Ethernet Bandwidth Increment



# Network Service Diagram

Large Scale IP Camera Control more than 10000 IP Camera





# RTSP Streaming Server Bandwidth Estimation

# Streaming Server Bandwidth Estimation

## Quadruple Encoding

= Full HD + HD + D1 + CIF

= 8Mbps + 4Mbps + 1Mbps + 512K

= 13.5Mbps → **64channel** x 13.5 = 864Mbps

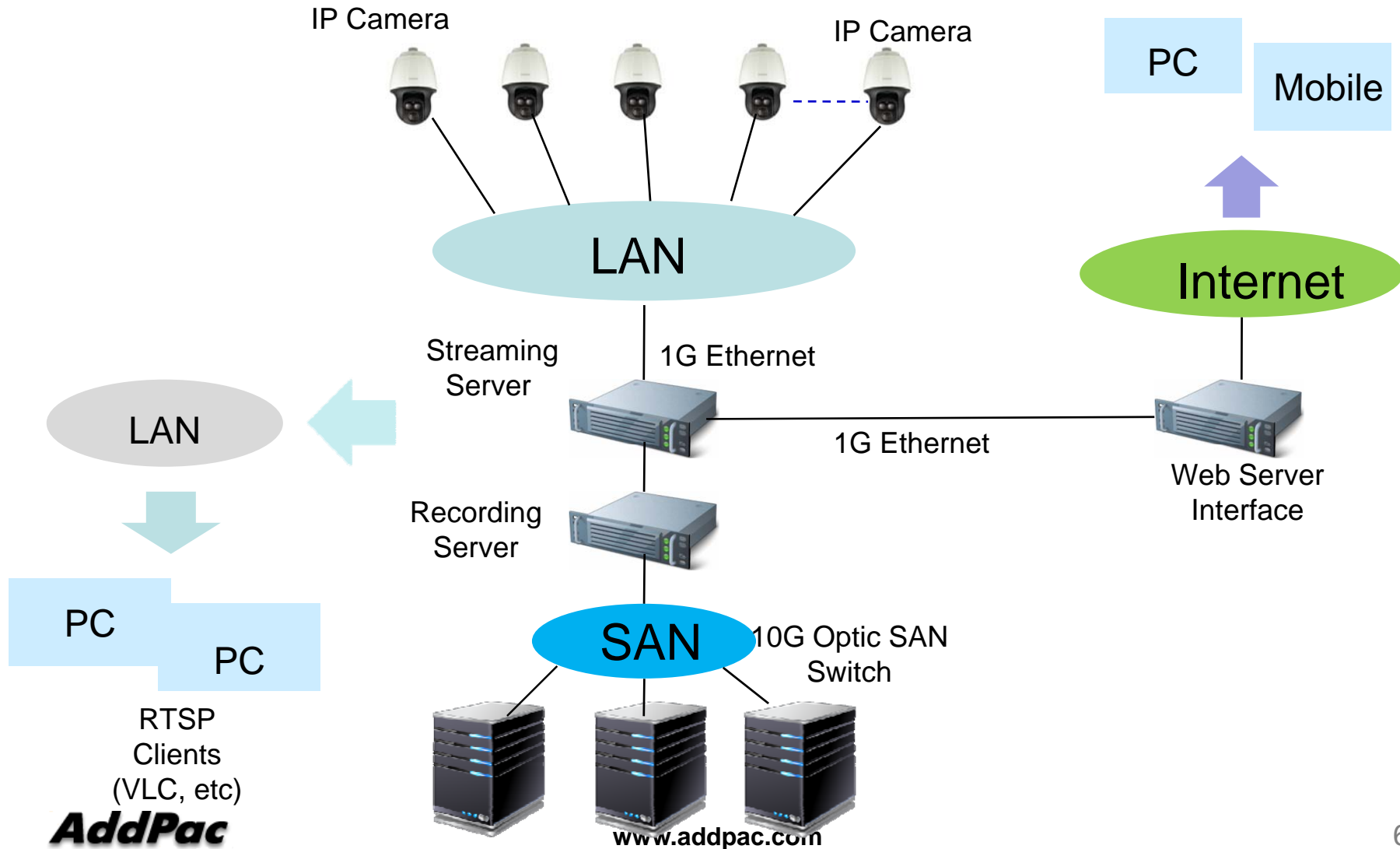
## Triple Encoding

= HD + D1 + CIF

= 4Mbps + 1Mbps + 512K

= 5.5Mbps → **128 channel** x 5.5 = 704Mbps

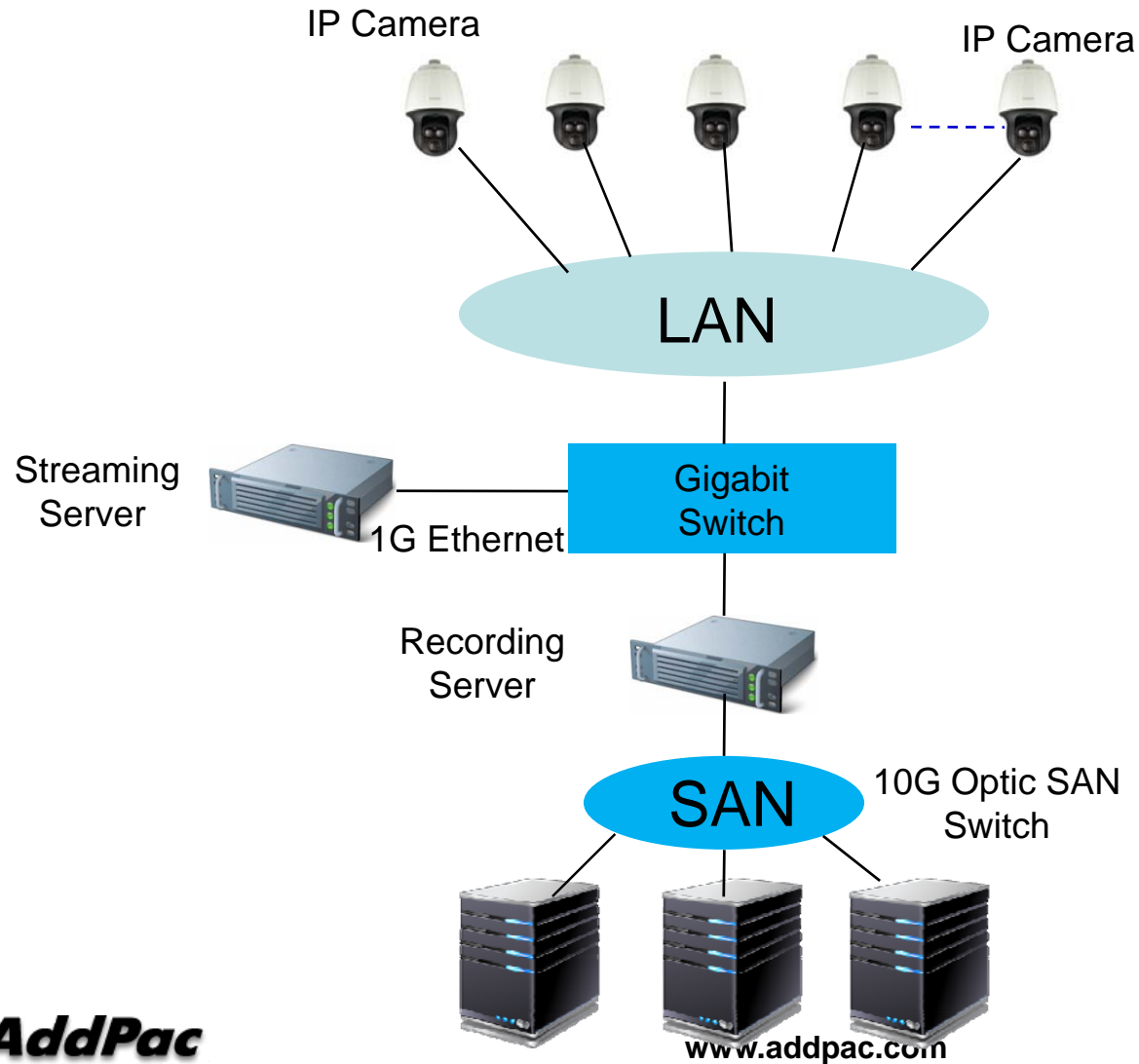
# Network Diagram





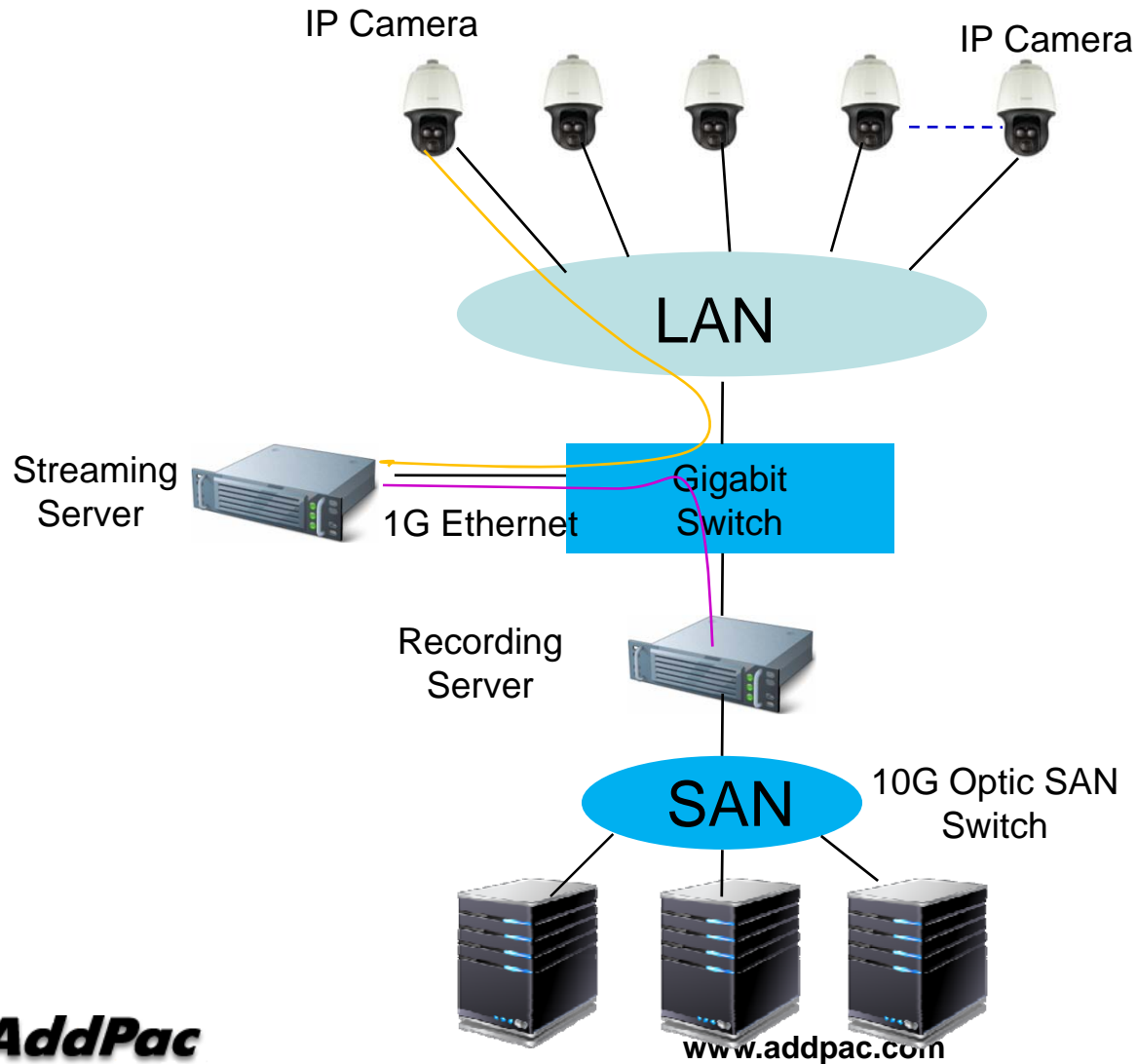
# Ethernet Interface Bonding for Bandwidth Increment

# Network Diagram (Gigabit Switch Interface)

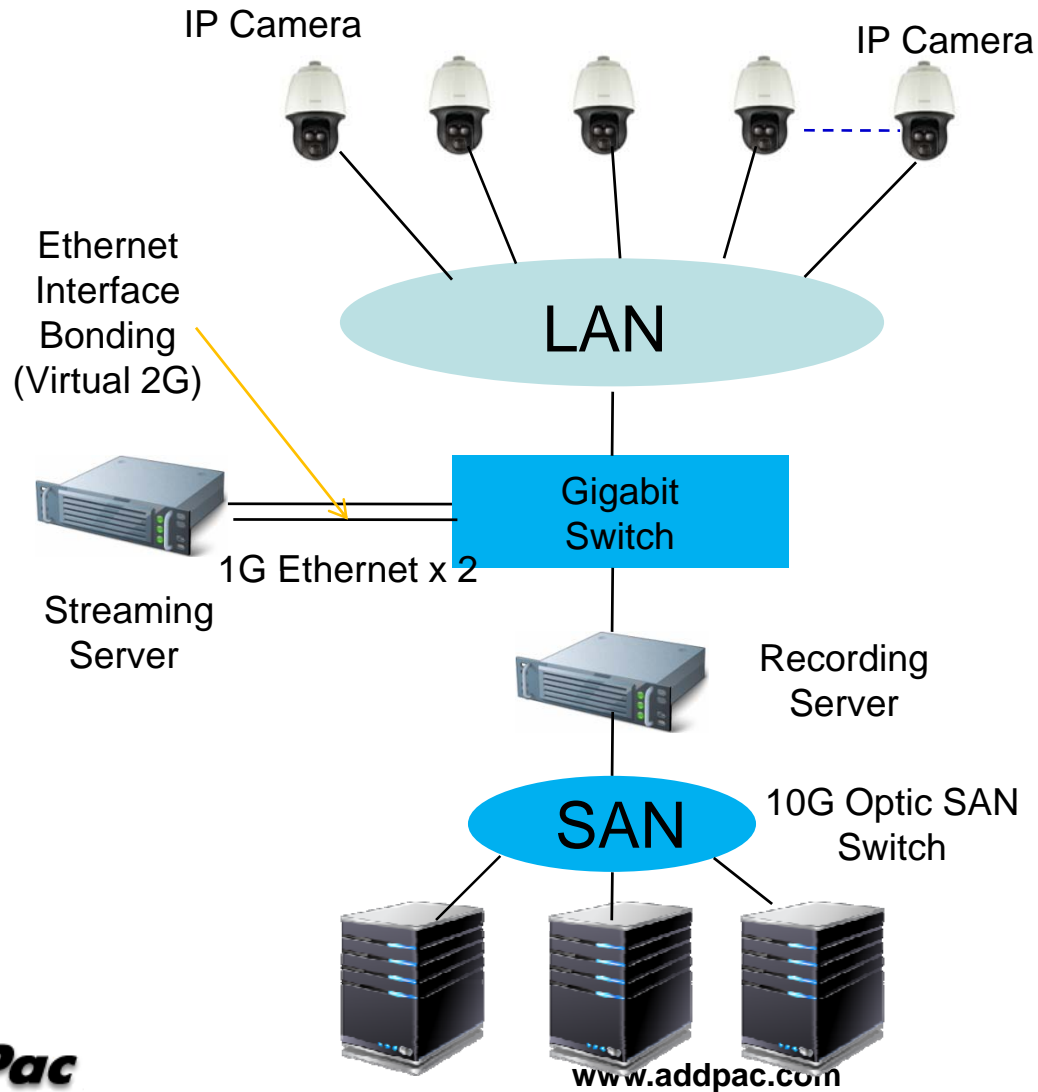




# Network Diagram (RTSP Traffic Flow)



# Network Diagram (Ethernet Bonding)



# Linux Ethernet Bonding Procedures

- Bond0 Interface Configuration
- Ethernet Interface Eth0, Eth1 Configuration
- Network Environment File Modification
- Module Configuration
- Network Restart & Bonding Interface Check

# Bond0 Interface Configuration

- Bond0 Interface Configuration

```
[root@localhost ~]# vi /etc/sysconfig/network-scripts/ifcfg-bond0
```

```
DEVICE=bond0  
IPADDR=100.100.100.66  
NETMASK=255.255.255.0  
BROADCAST=100.100.100.255  
GATEWAY=100.100.100.1  
ONBOOT=yes  
BOOTPROTO=none  
USERCTL=no  
BONDING_OPTS="mode=4 miimon=100"
```

## [Bonding Mode]

- 0 : balance-round robin ( round-robin + fault tolerance )
- 1 : active-standby ( active-standby fault tolerance )
- 2 : balance-xor ( similar with 0 mode, XOR(source, destination MAC) + fault tolerance )
- 3 : broadcast (link broadcasting both + fault tolerance)
- 4 : 802.3ad (link aggregation) – switch aggregation scheme

# Ethernet Interface Eth0, Eth1 Configuration

- Ethernet Interface Eth0, Eth1 Configuration

```
root@localhost ~]# vi /etc/sysconfig/network-scripts/ifcfg-eth0
```

```
DEVICE=eth0  
ONBOOT=yes  
BOOTPROTO=none  
USERCTL=no  
MASTER=bond0  
SLAVE=yes
```

```
[root@localhost ~]# vi /etc/sysconfig/network-scripts/ifcfg-eth1
```

```
DEVICE=eth1  
ONBOOT=yes  
BOOTPROTO=none  
USERCTL=no  
MASTER=bond0  
SLAVE=yes
```

# Network Environment File Modification

- Network Environment File Modification

```
[root@localhost ~]# vi /etc/sysconfig/network
```

```
#Add following Info. In file
```

```
GATEDEV=bond0
```

# Module Configuration

- Module Configuration

```
[root@localhost ~]# vi /etc/modprobe.conf
```

```
# Add following Info. In file  
alias bond0 bonding  
options bond0 miimon=100
```

```
[root@localhost ~]# modprobe bonding
```

```
[root@localhost ~]# lsmod | grep bonding  
bonding          126649 0  
ipv6             432161 26 bonding,ip6t_REJECT
```

# Network Restart

- Network Restart & Bond0 Interface Check

```
[root@localhost ~]# service network restart
```

```
[root@localhost ~]# show interfaces
```

```
[root@localhost ~]# cat /proc/net/bonding/bond0
```





# Thank you!

**AddPac Technology Co., Ltd.**  
Sales and Marketing

Phone +82.2.568.3848 (KOREA)

FAX +82.2.568.3847 (KOREA)

E-mail : [sales@addpac.com](mailto:sales@addpac.com)