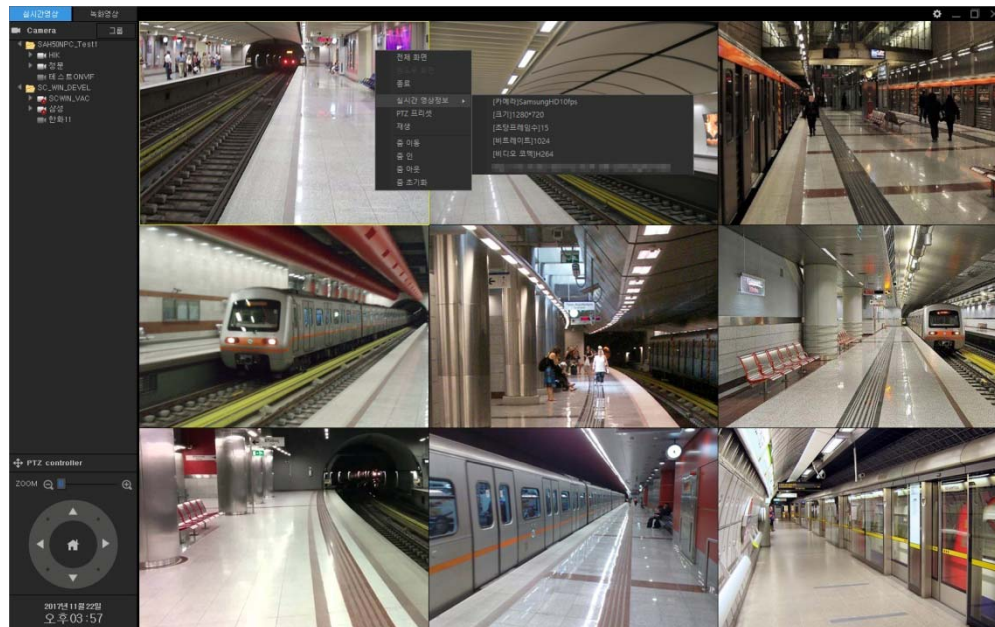


CCTV VMS Video Displayer Joy-Stick Interworking



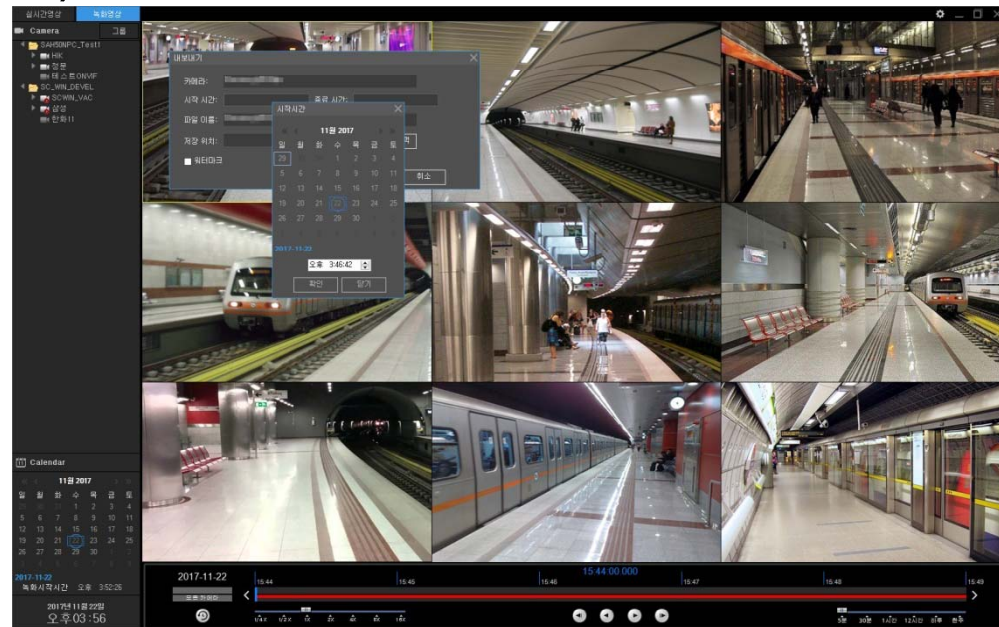
AddPac

AddPac Technology

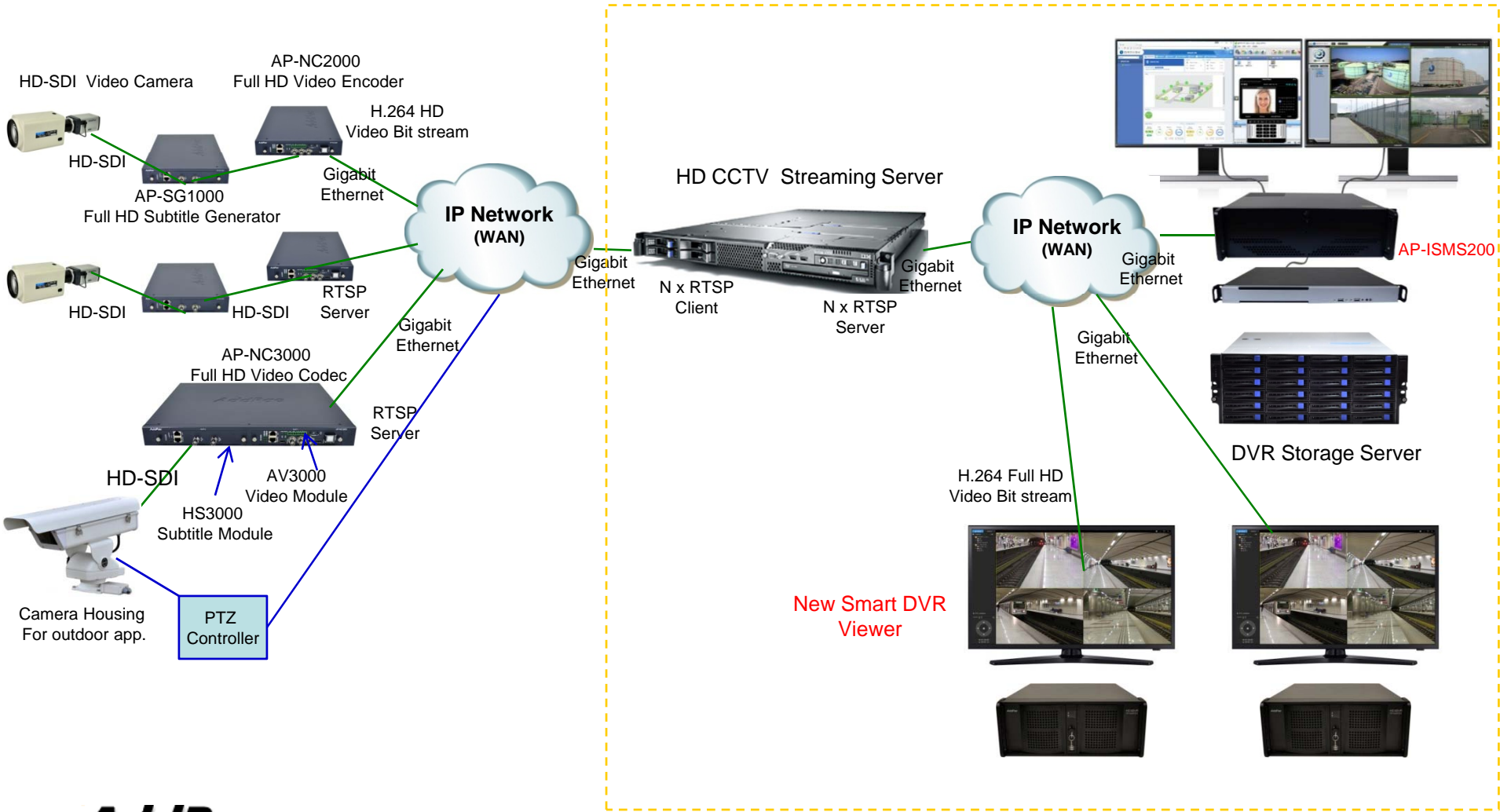
Sales and Marketing

Contents

- Network Service Diagram
- CCTV VMS Video Displayer Overview
- SAMSUNG SPC7000 Joy-Stick Interworking
- UI Design (examples)



Network Service Diagram



CCTV VMS Video Displayer Overview

- IP based Multi-Channel Video Streaming Displayer (Live, Recording)
- **Onvif Protocol Support**
- RTSP/RTP Video Streaming Protocol Support
- H.264(1080P, 720P) HP/MP/BP Video Codec Support
- **H.265 Video Codec Support (Option)**
- MPEG4, MJPEG Video Codec Support (Option)
- Full HD (1080P), HD(720P), D1 Video Resolution Support
- Four(4) or One(1) Channel Video Layout (Video Splitter)
Option : Nine(9) Channel Video Layout (Video Splitter)
- 4ch Layout , 1ch Layout Display (Round Robin Display)
- **UHD Display Support (Option)**
- Video Solution with Outstanding Network Service Capability
- MS-Window based Software Platform
- Dark and Black Design Concept

SPC7000 Joy-Stick Interworking Overview

- USB Interface Support
- Camera Selection Support
- Basic Pan/Tilt/Zoom Function Support
- Preset Function Support
- Jog-Shuttle Function Support
- Custom Key Operation Mode Support (Option)

Live Video Displayer PTZ Control



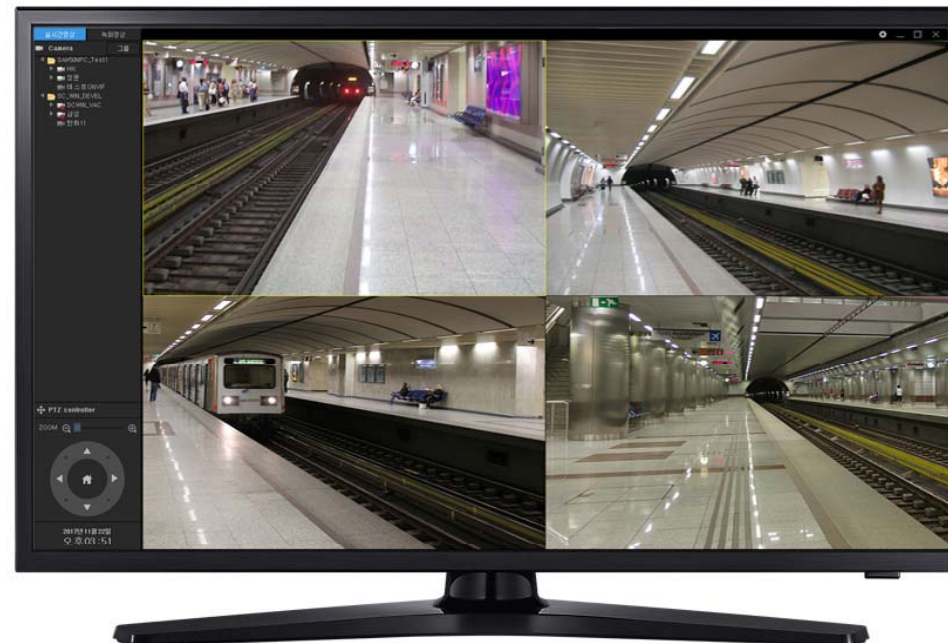
Jog-Shuttle based Recorded Video Replay



Jog-Shuttle based Recorded Video Replay



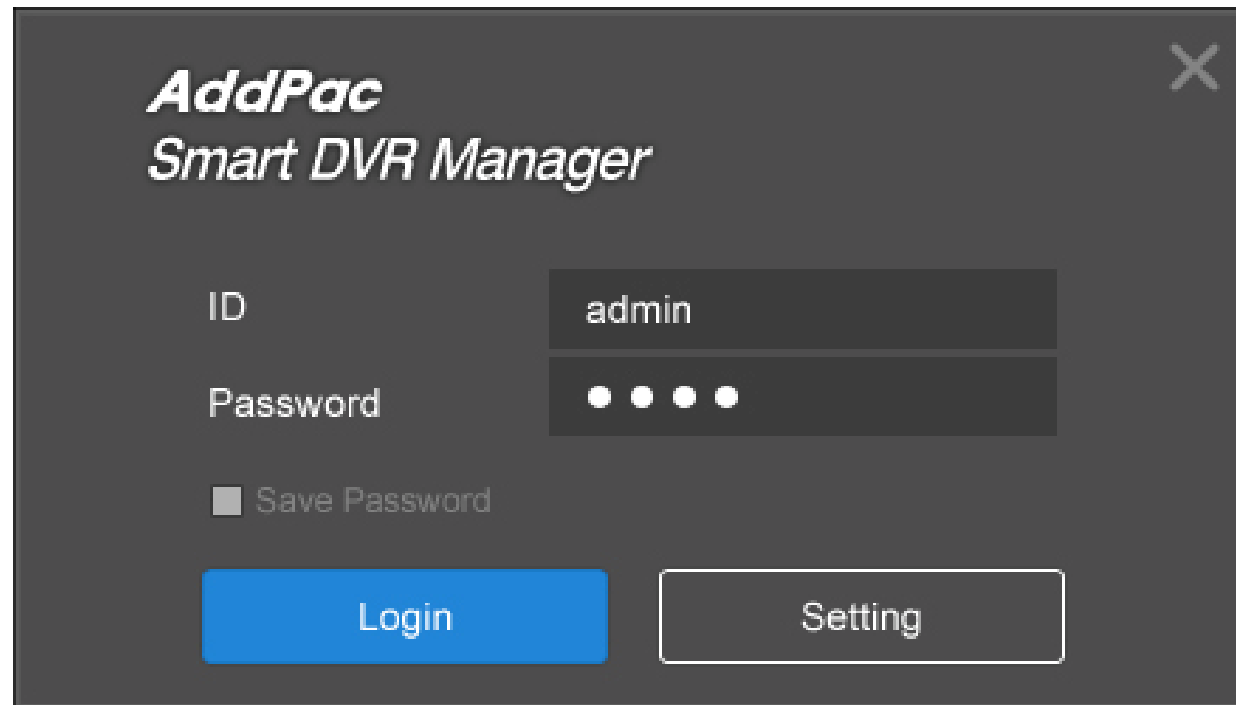
UI Design & Examples



Contents

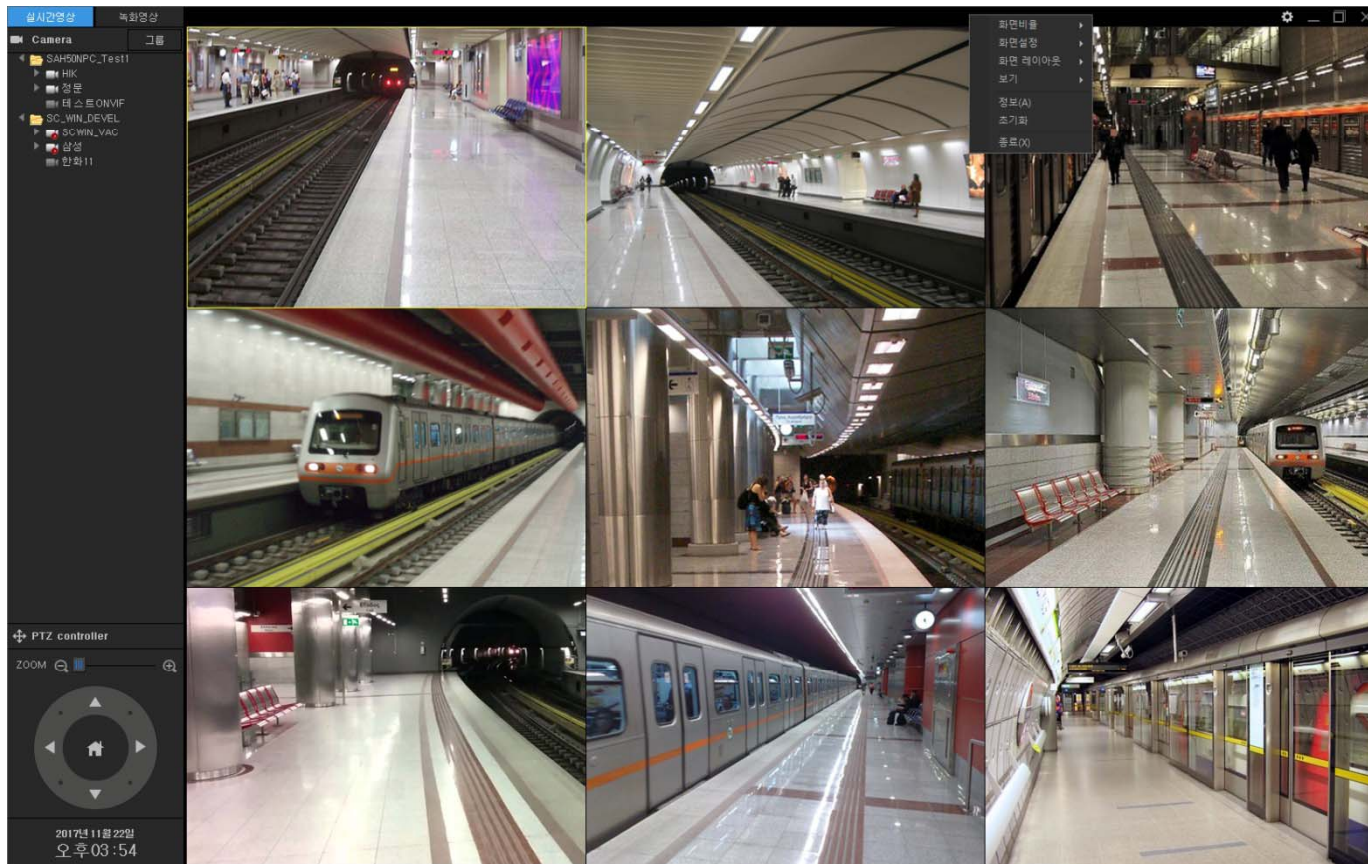
- Login View, Main View
- Top Side Menu : Menu Bar Hidden
- Menu bar Hidden : 4channel Video Splitter (Example)
- Live View Display Channel Layout
- Display Aspect Ratio Config.
- Subtitle Display Position Config.
- Live View Camera Config.
- Live View Camera PTZ Preset, Preset Move
- Live View Camera Real-time Video Information Display
- Live View (1,4,9,16) Example
- Recording View PopMenu, Video Export Menu
- Recording View (1,4,9) Example

UI examples : Login

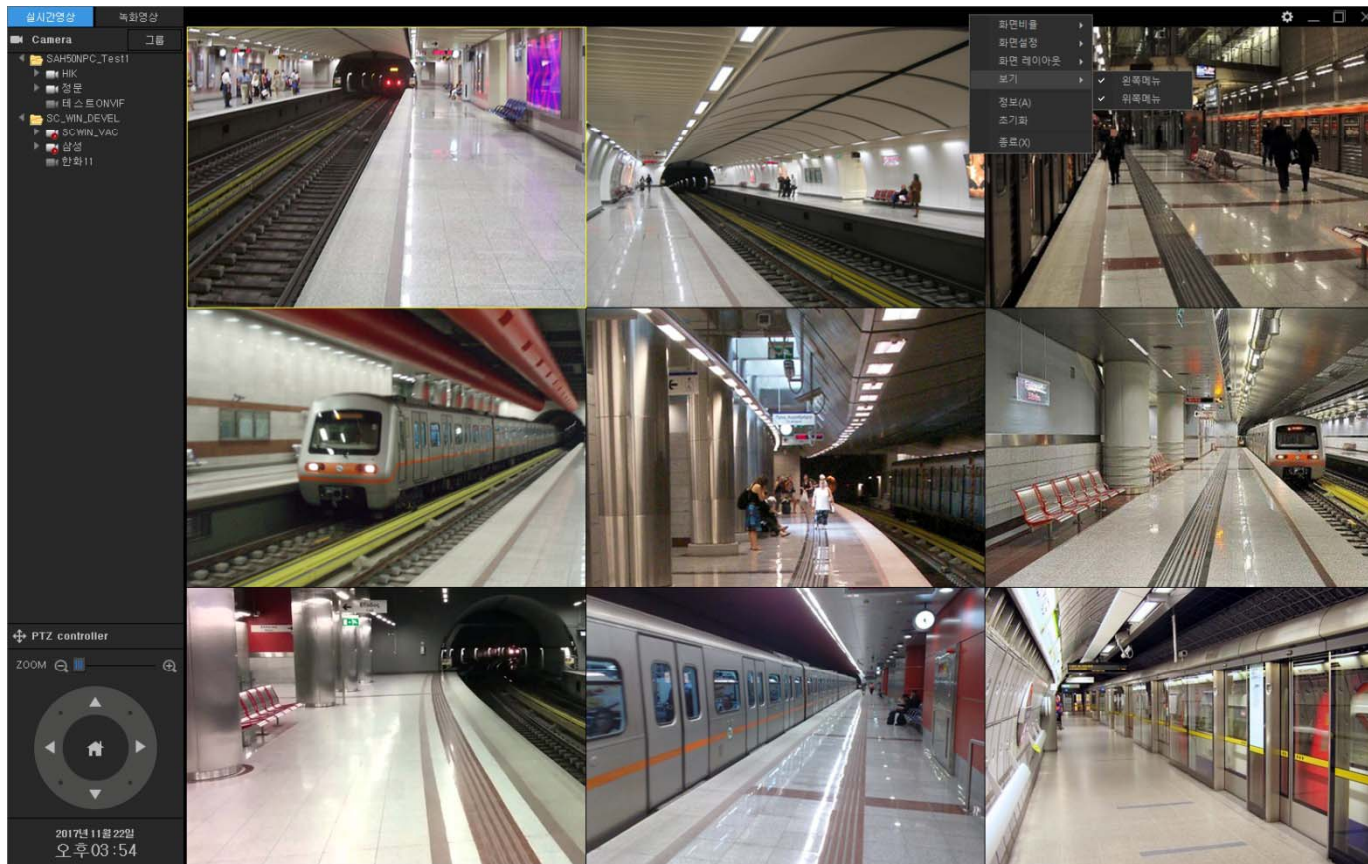


The screenshot shows a dark-themed login window for 'AddPac Smart DVR Manager'. The window has a title bar with the text 'AddPac Smart DVR Manager' and a close button (X) in the top right corner. Below the title, there are two input fields: 'ID' with the text 'admin' and 'Password' with four dots representing a masked password. Below the password field is a checkbox labeled 'Save Password' which is currently unchecked. At the bottom of the window, there are two buttons: a solid blue 'Login' button and a white-outlined 'Setting' button.

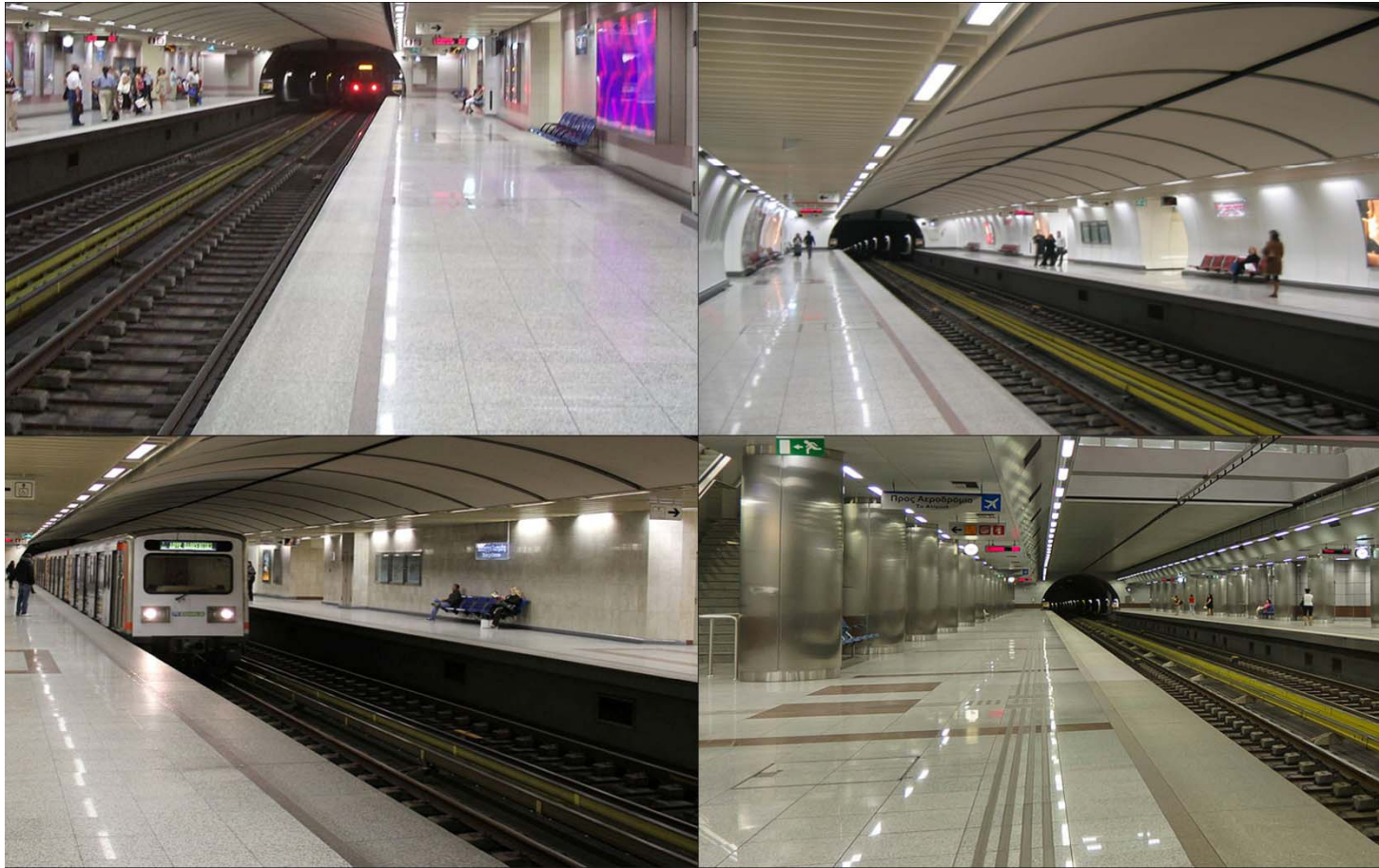
UI examples : Top Side Menu



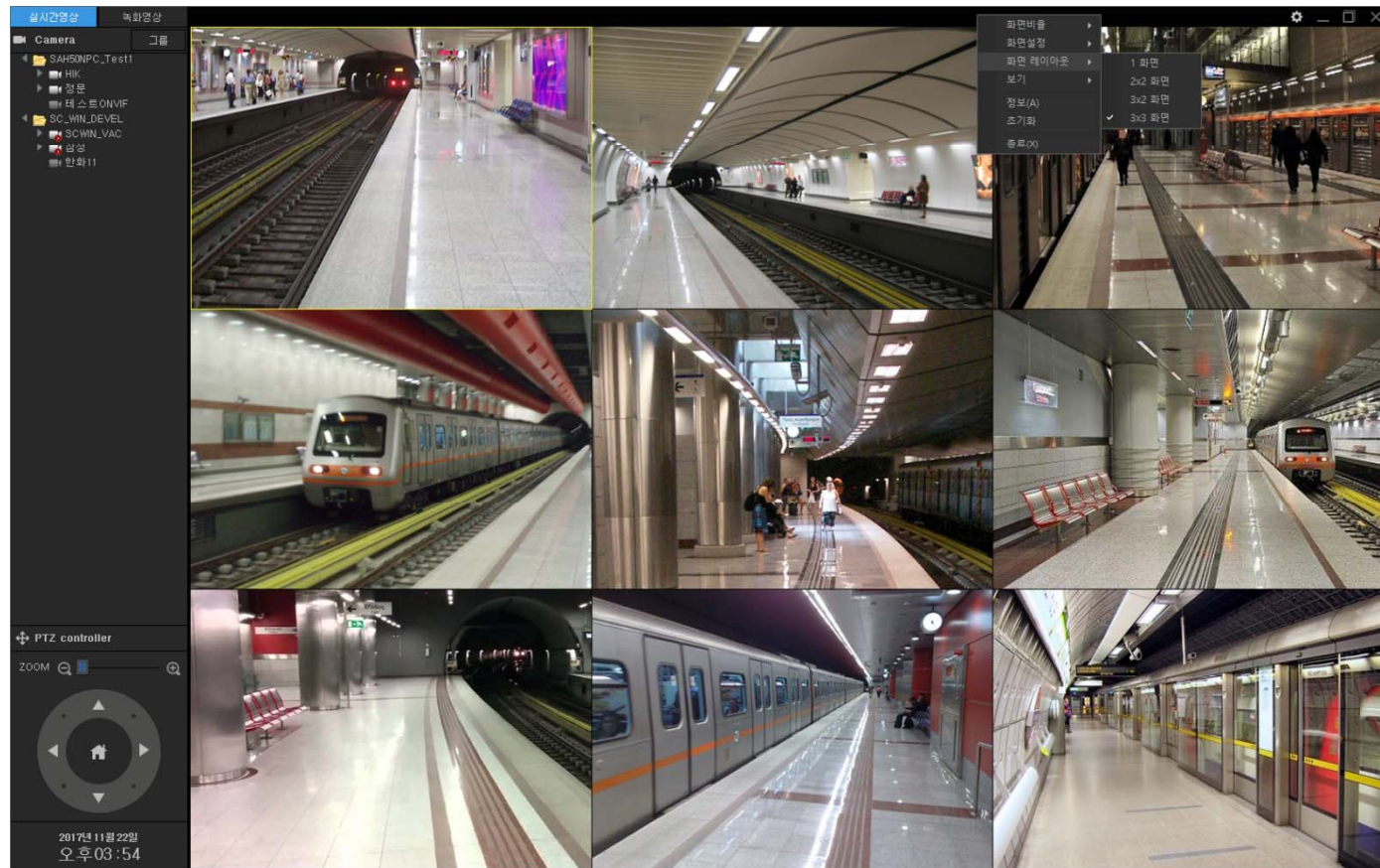
UI examples : Top Side Menu (Hidden)



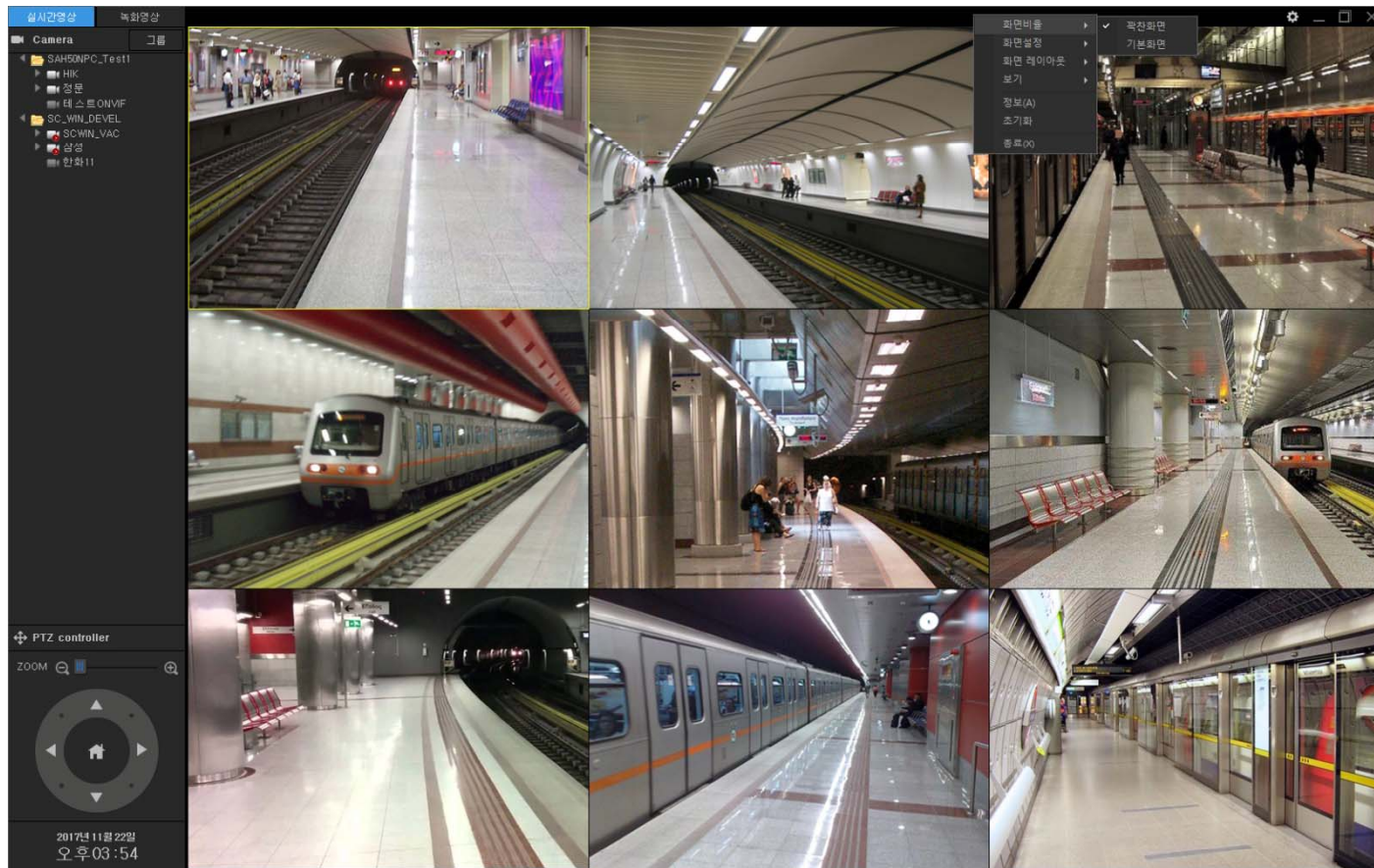
UI examples : Top Side Menu (Hidden, 4Channel Video Splitter)



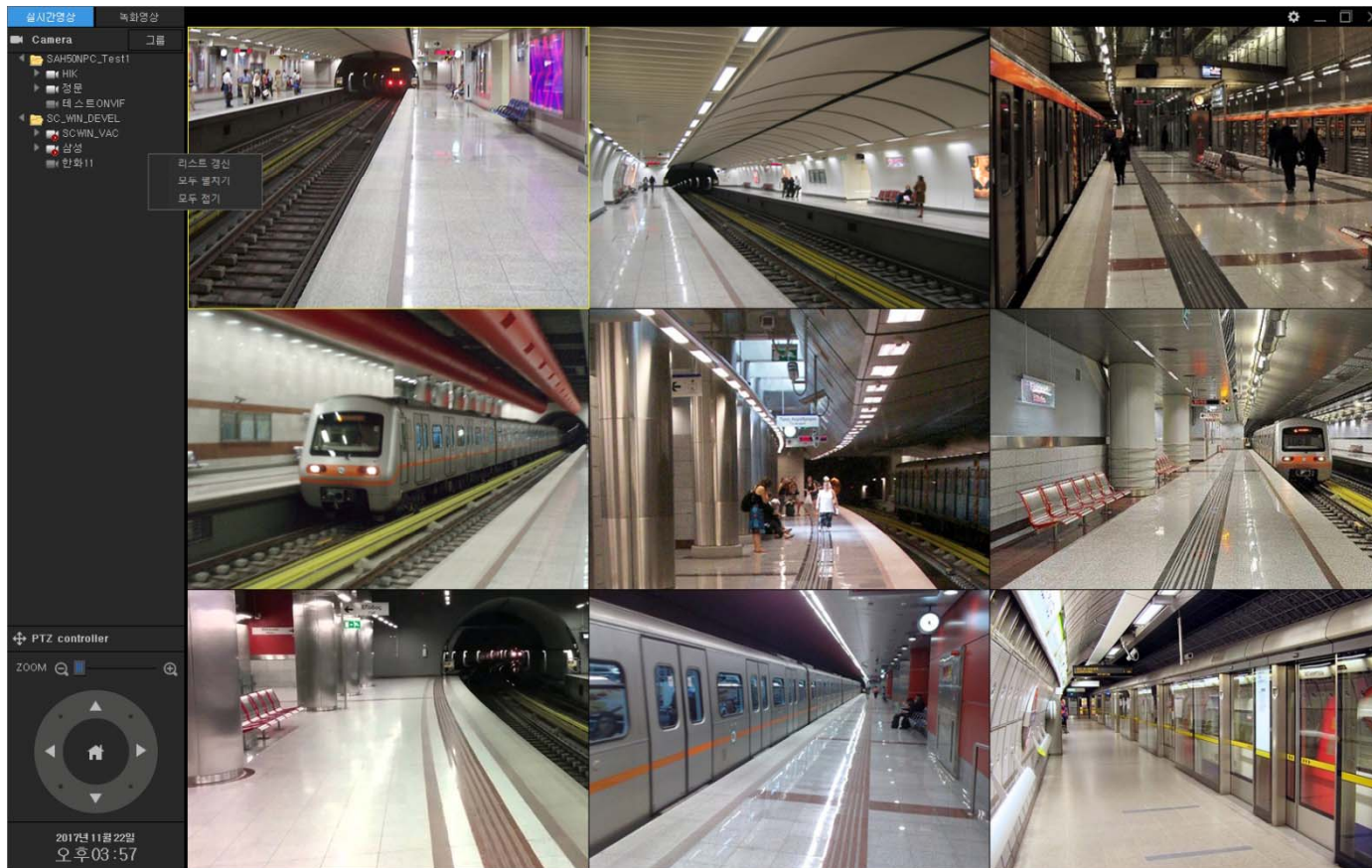
UI examples : Top Side Menu (Layout)



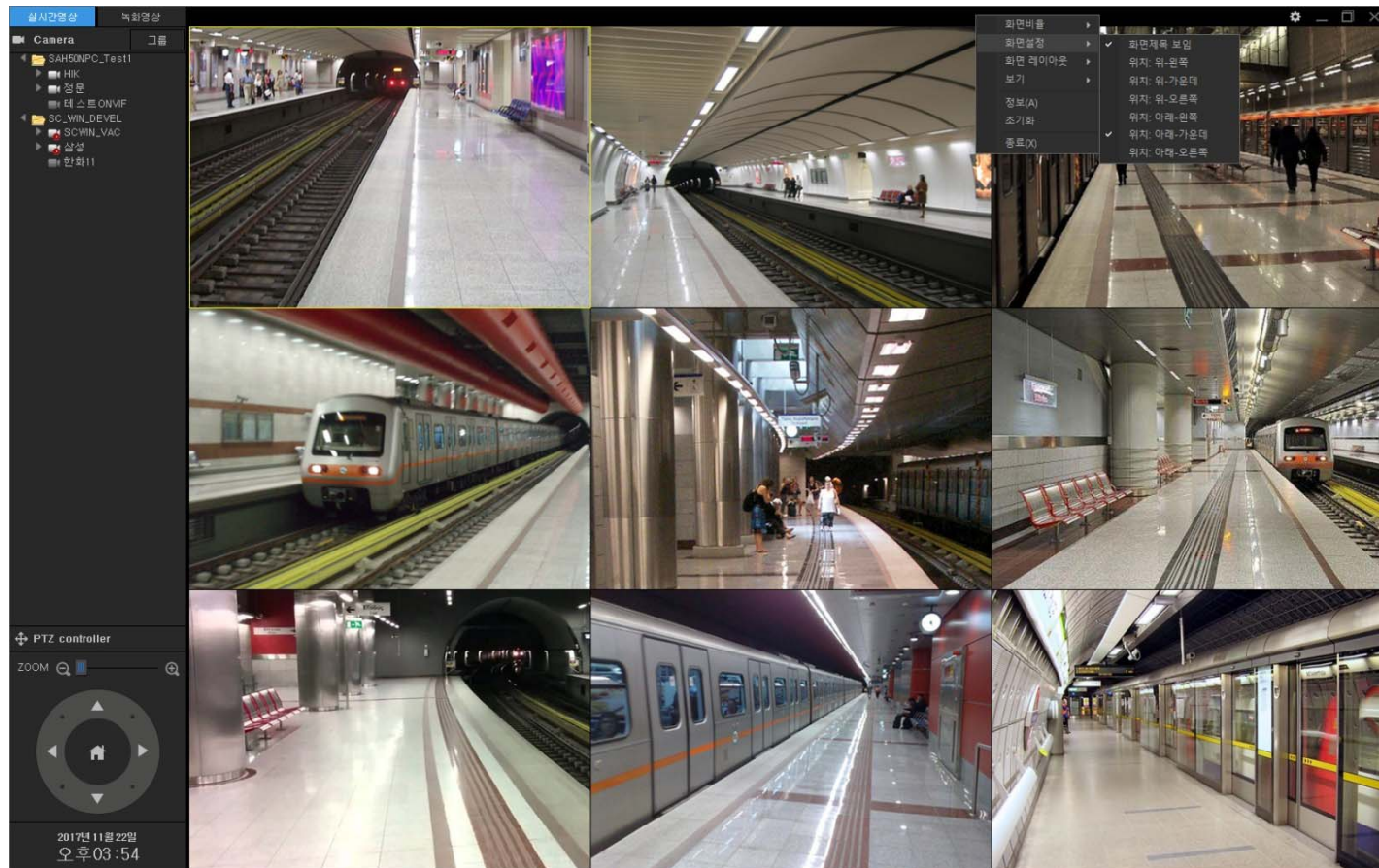
UI examples : Top Side Menu (Aspect Ratio)



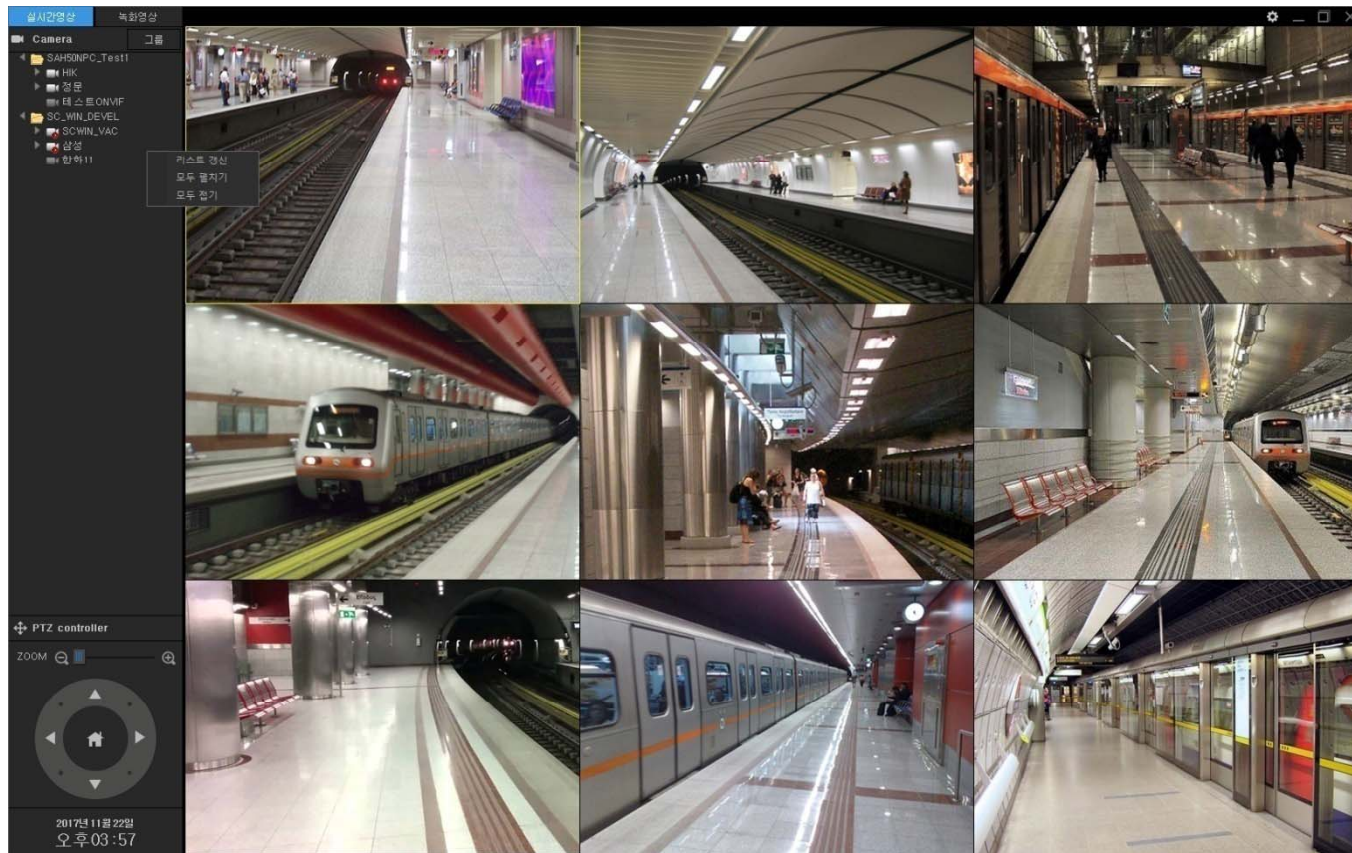
UI examples : Top Side Menu (Aspect Ratio)



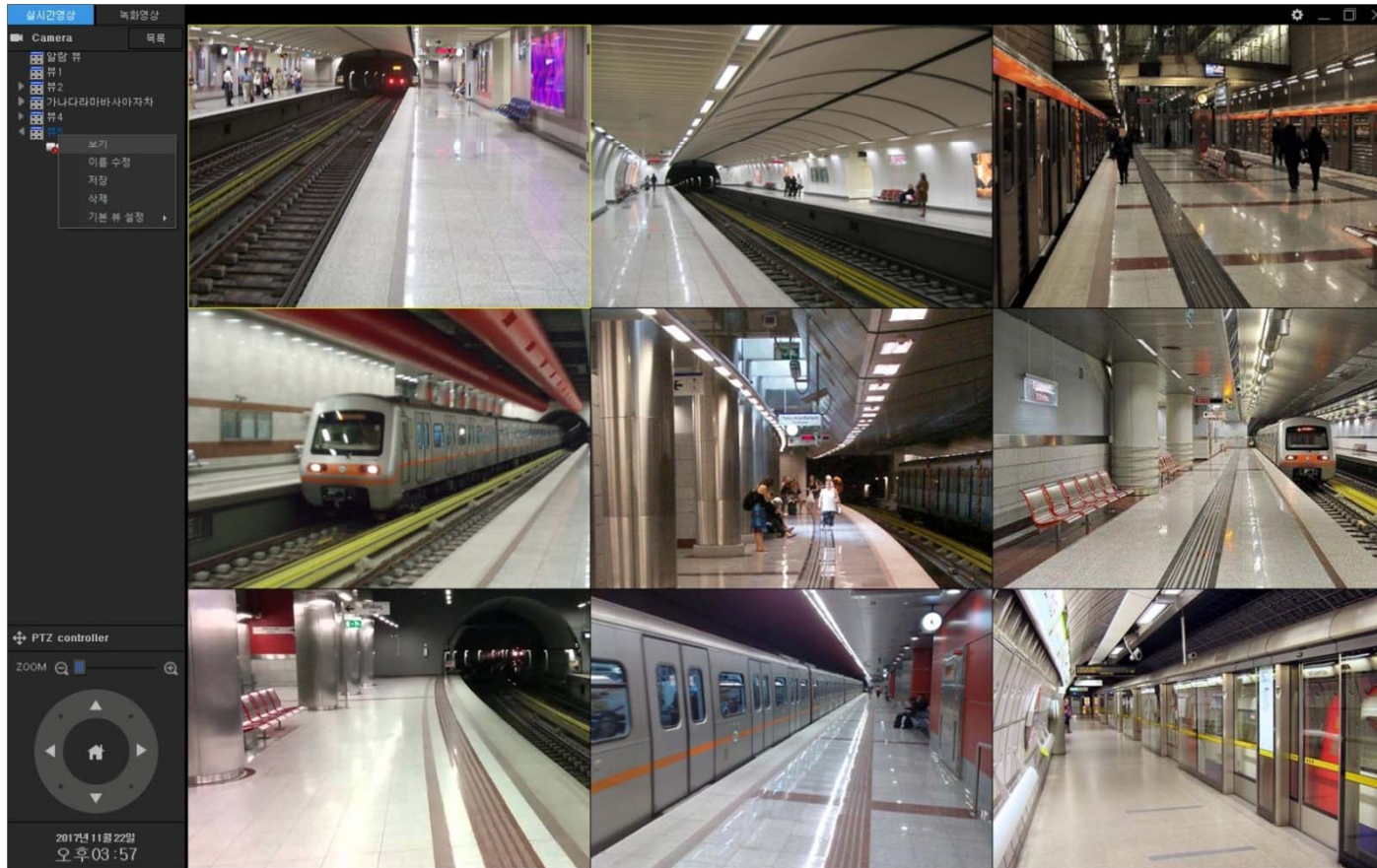
UI examples : Top Side Menu (Title Bar Position)



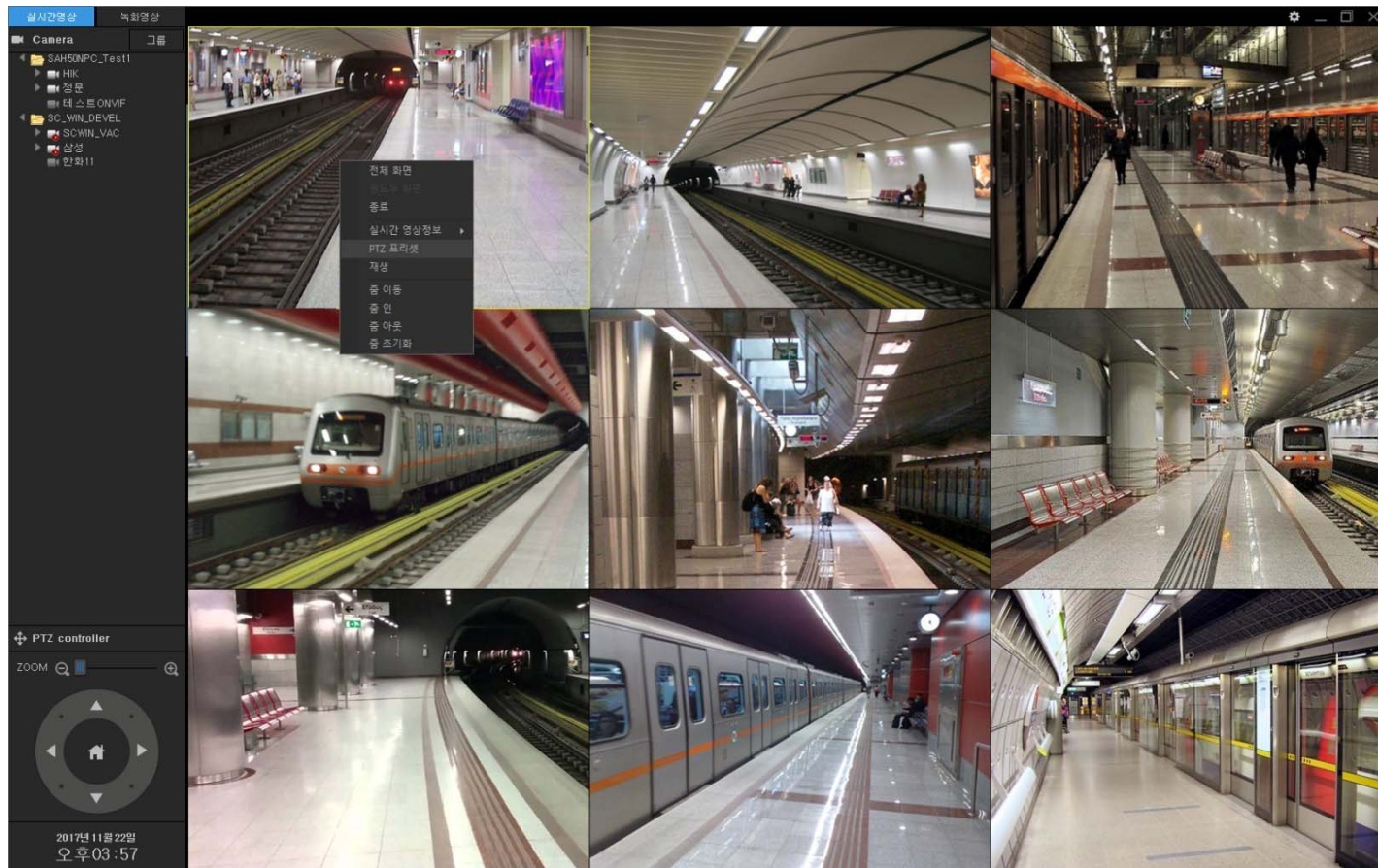
UI examples : Live Viewer



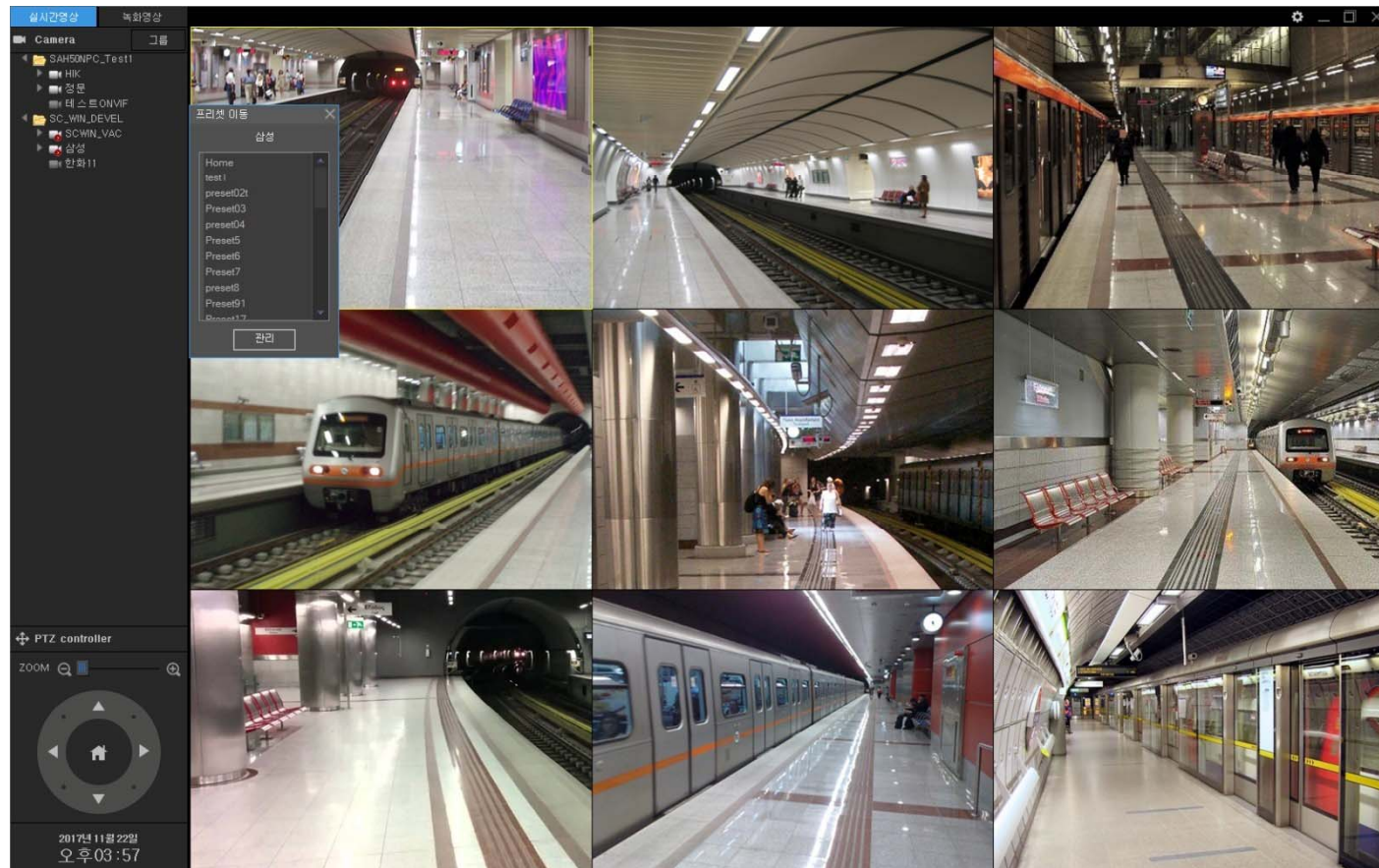
UI examples : Live Viewer (Camera Configuration)



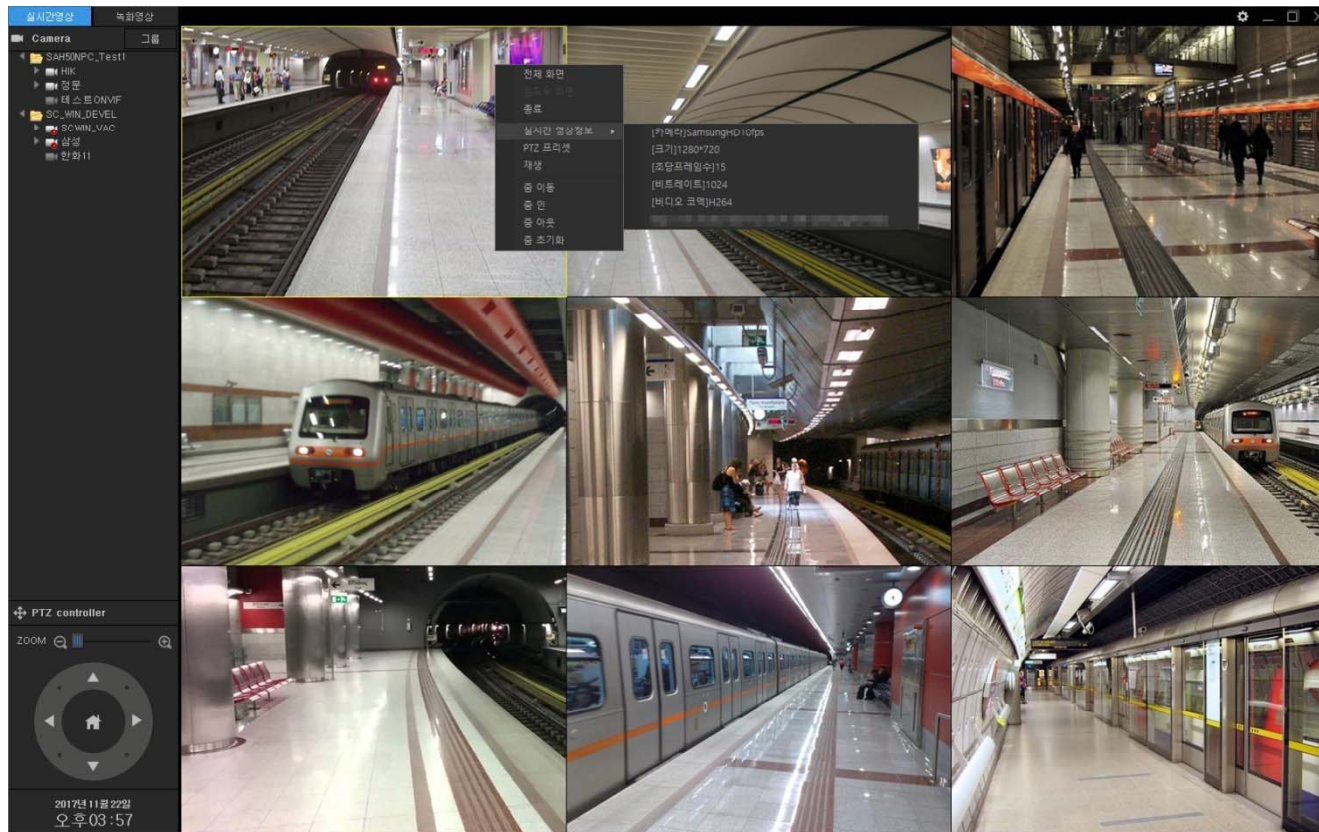
UI examples : Live Viewer (PTZ Preset)



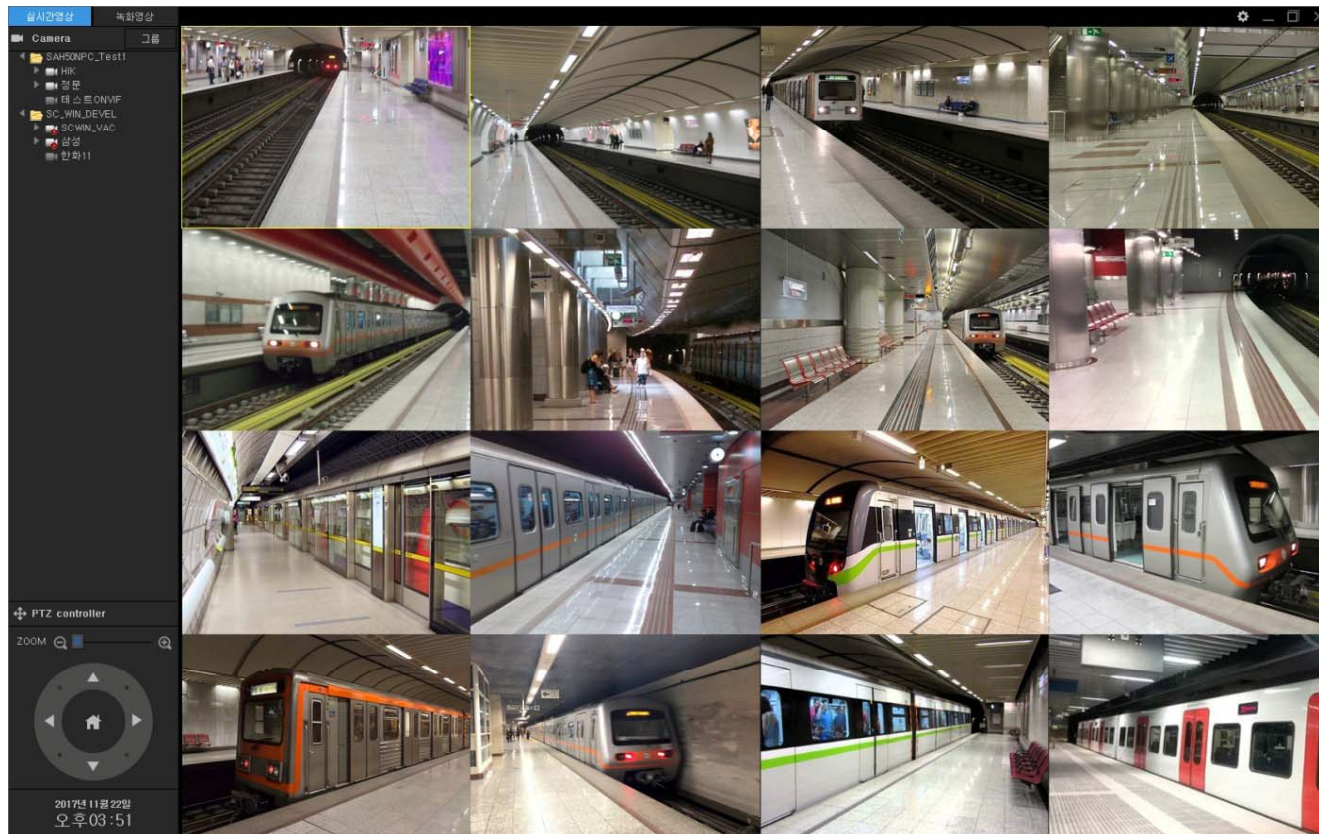
UI examples : Live Viewer (PTZ Preset Move)



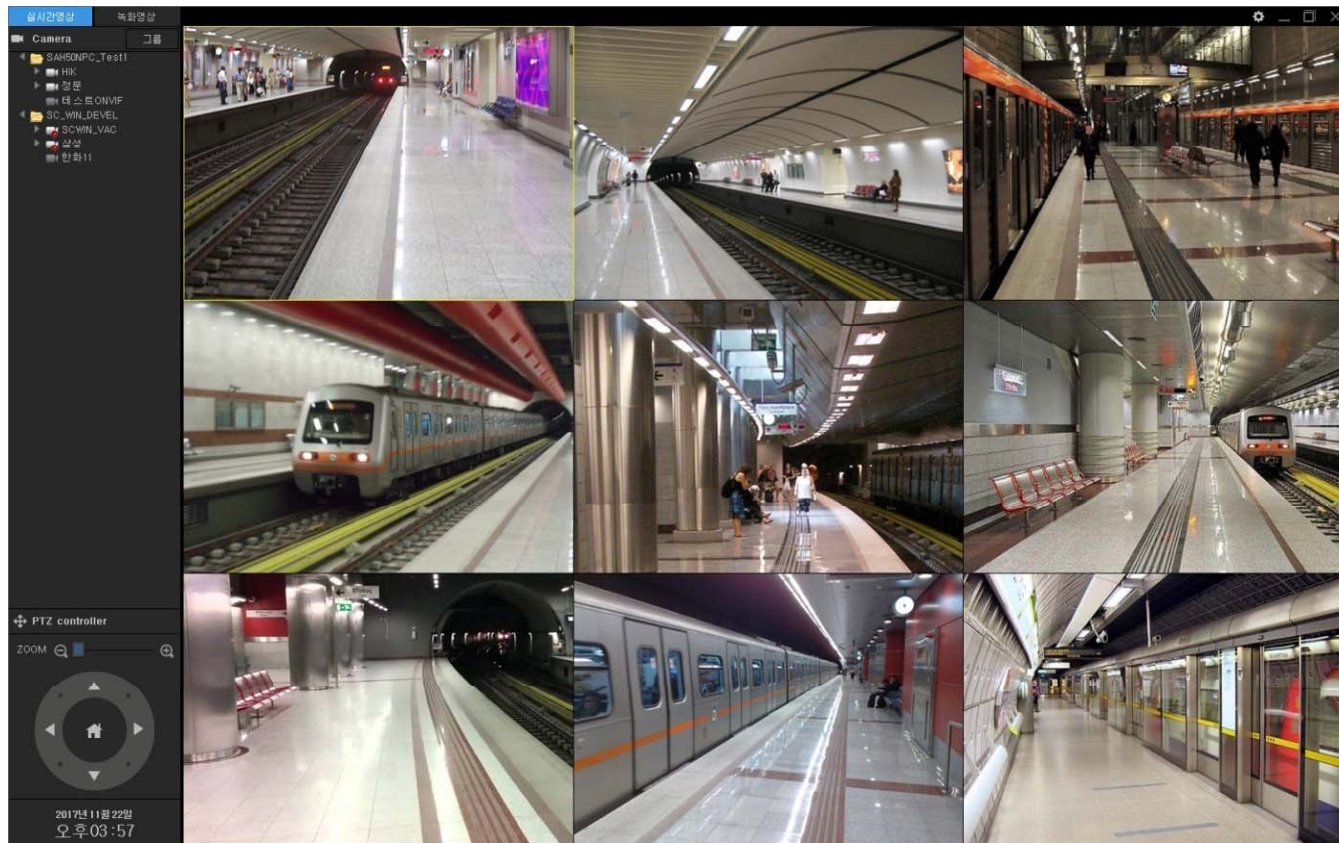
UI examples : Live Viewer (Real-time Video Information Display)



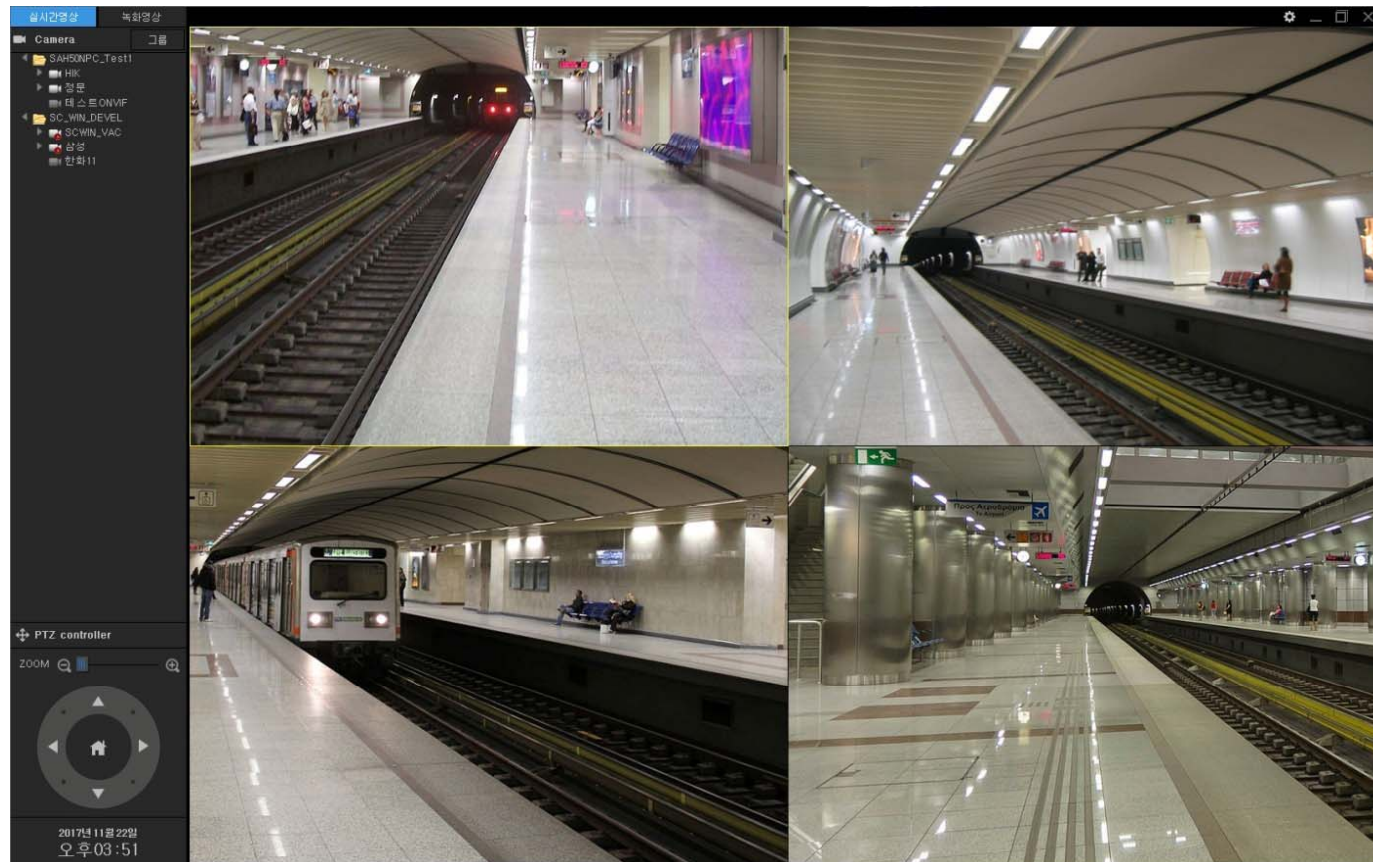
UI examples : 16 Channel Live View



UI examples : 9 Channel Live View



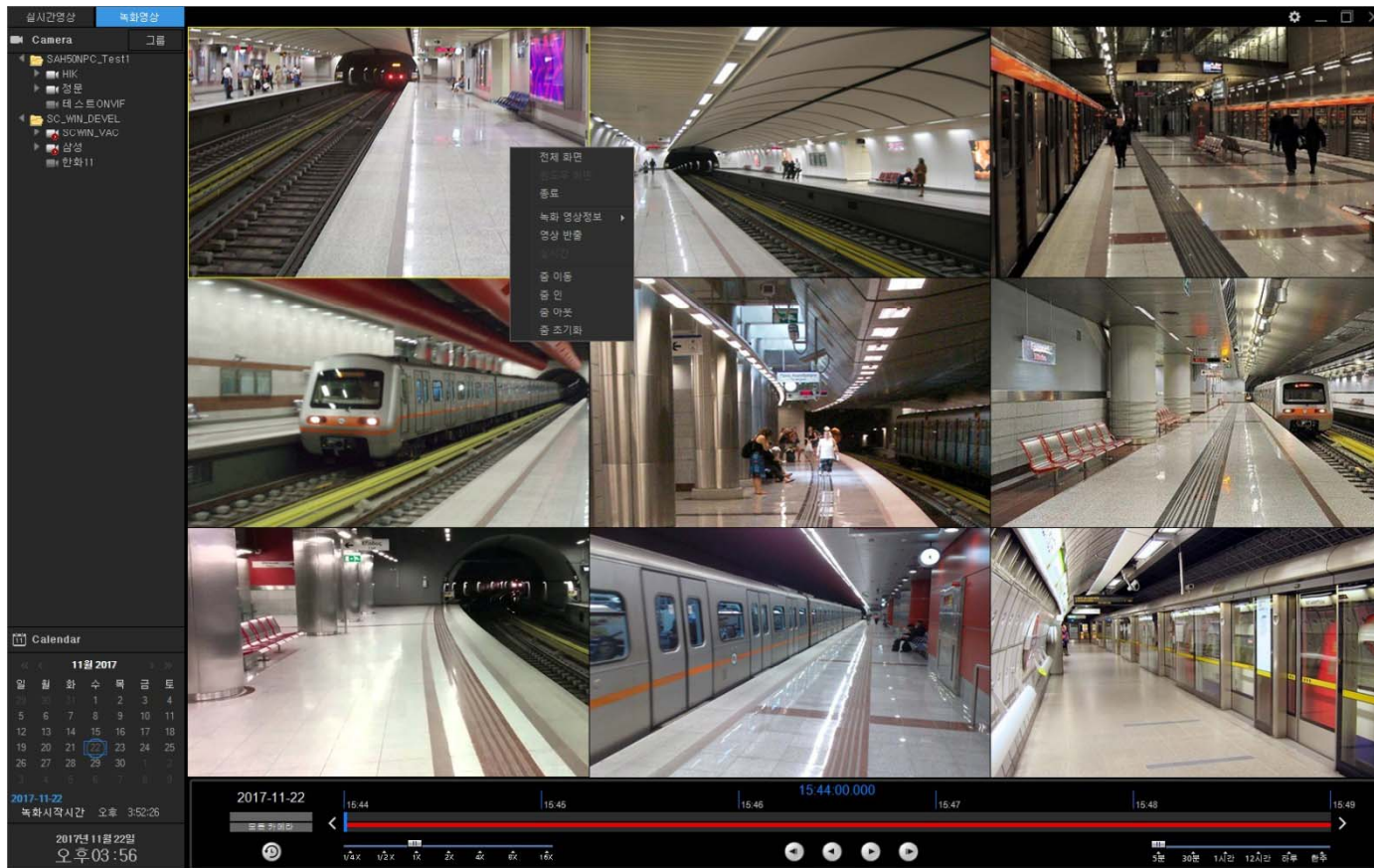
UI examples : 4 Channel Live View



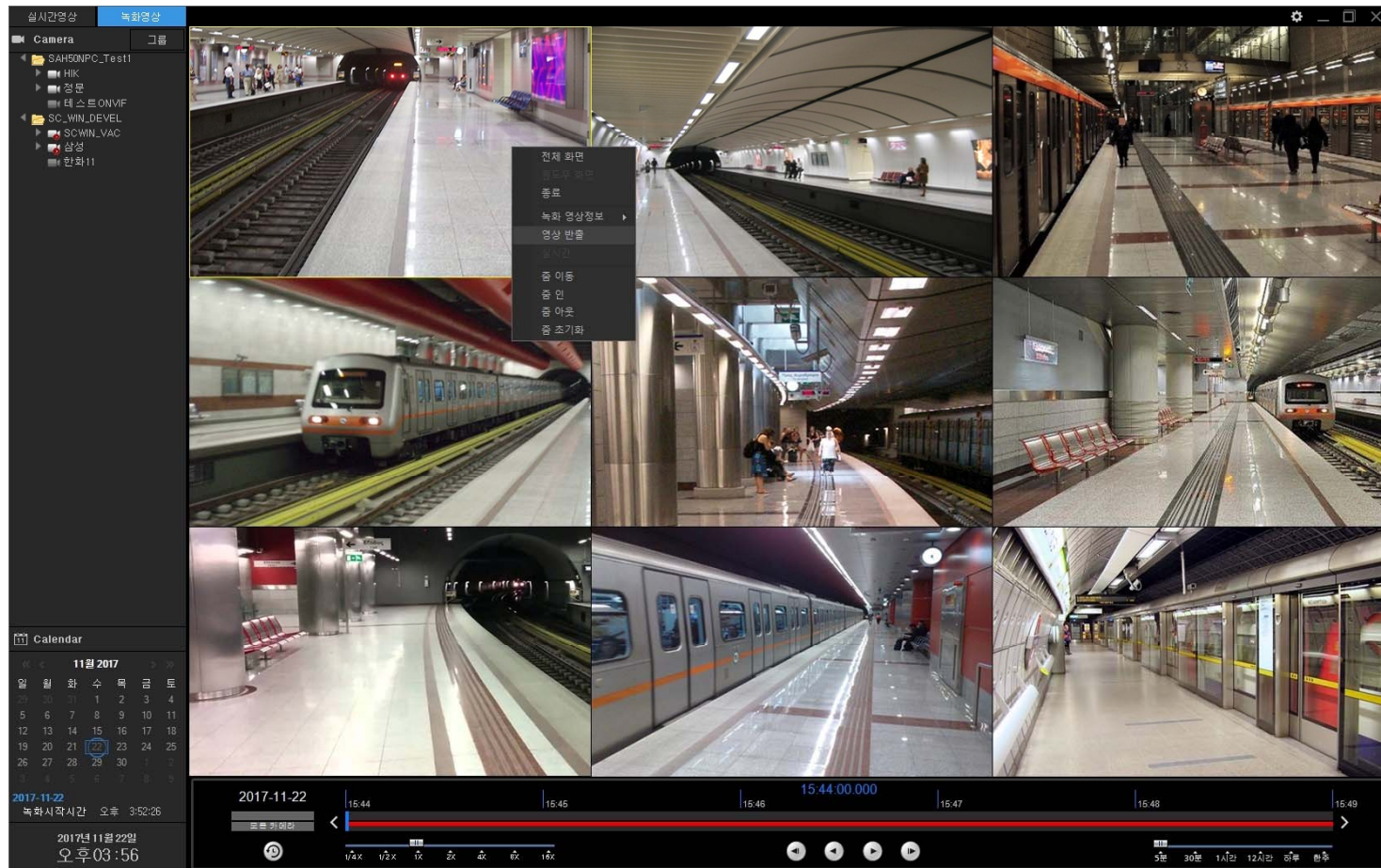
UI examples : 1 Channel Live View



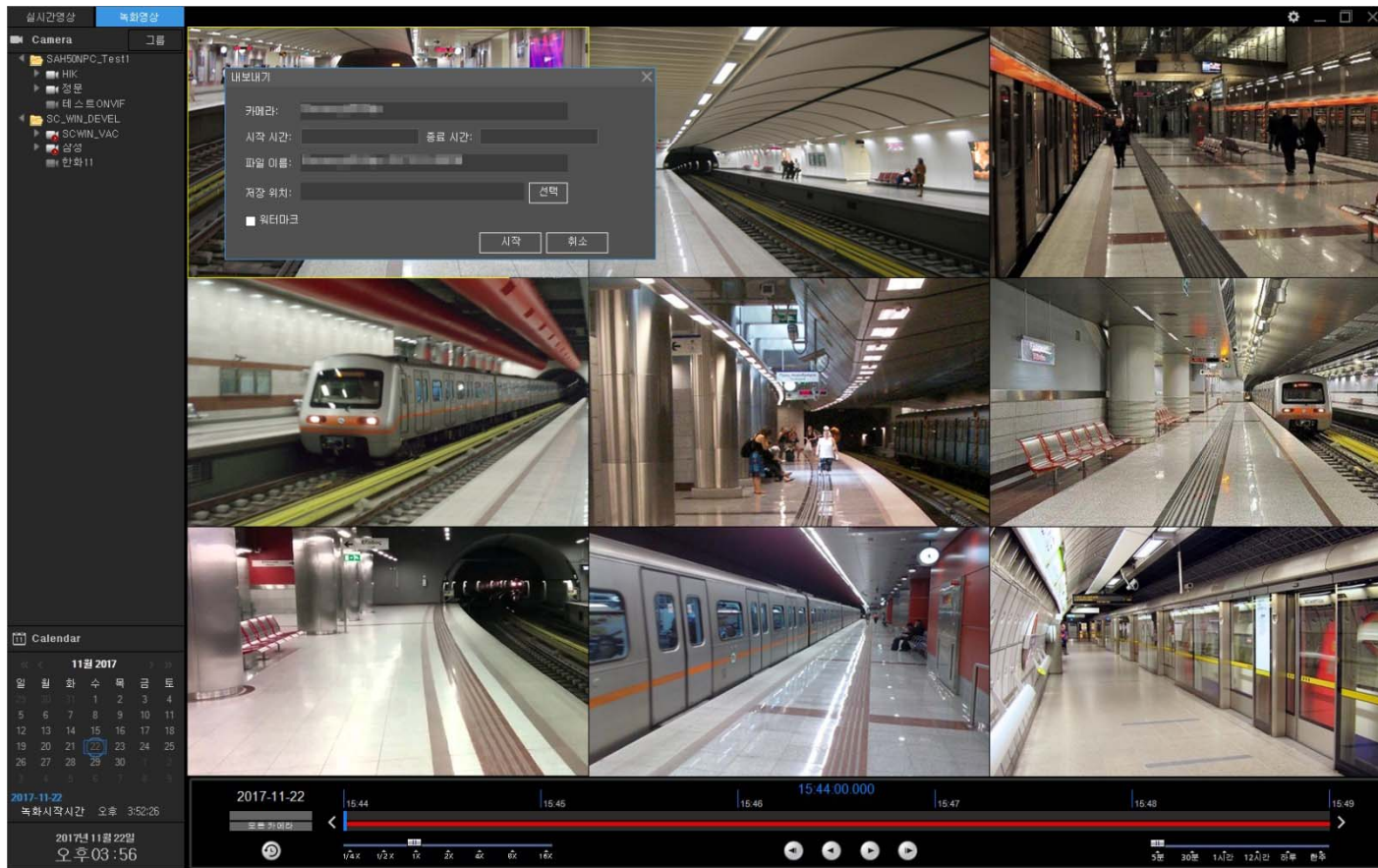
UI examples : Recording Viewer (Popup Menu)



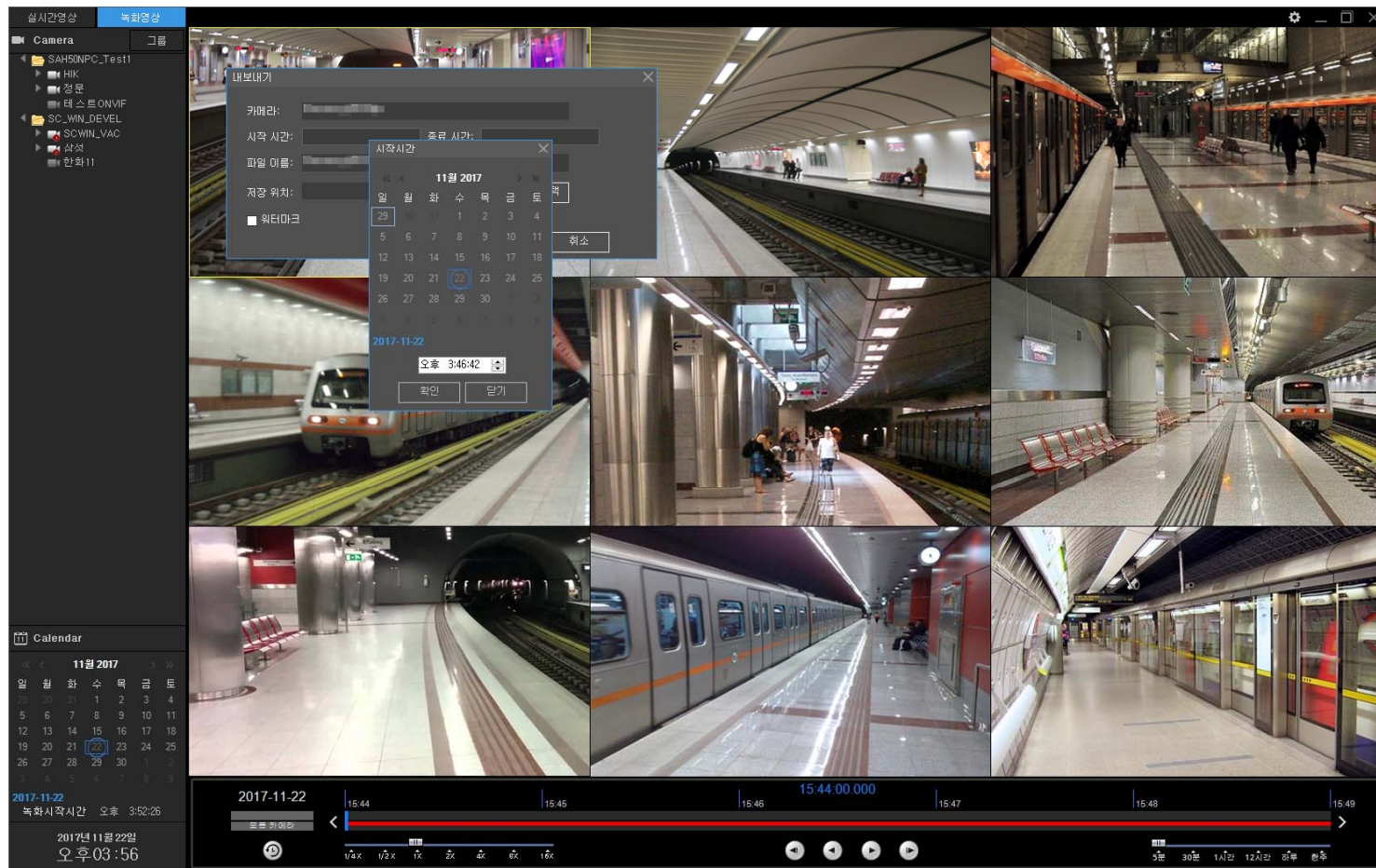
UI examples : Recording Viewer (Video Export)



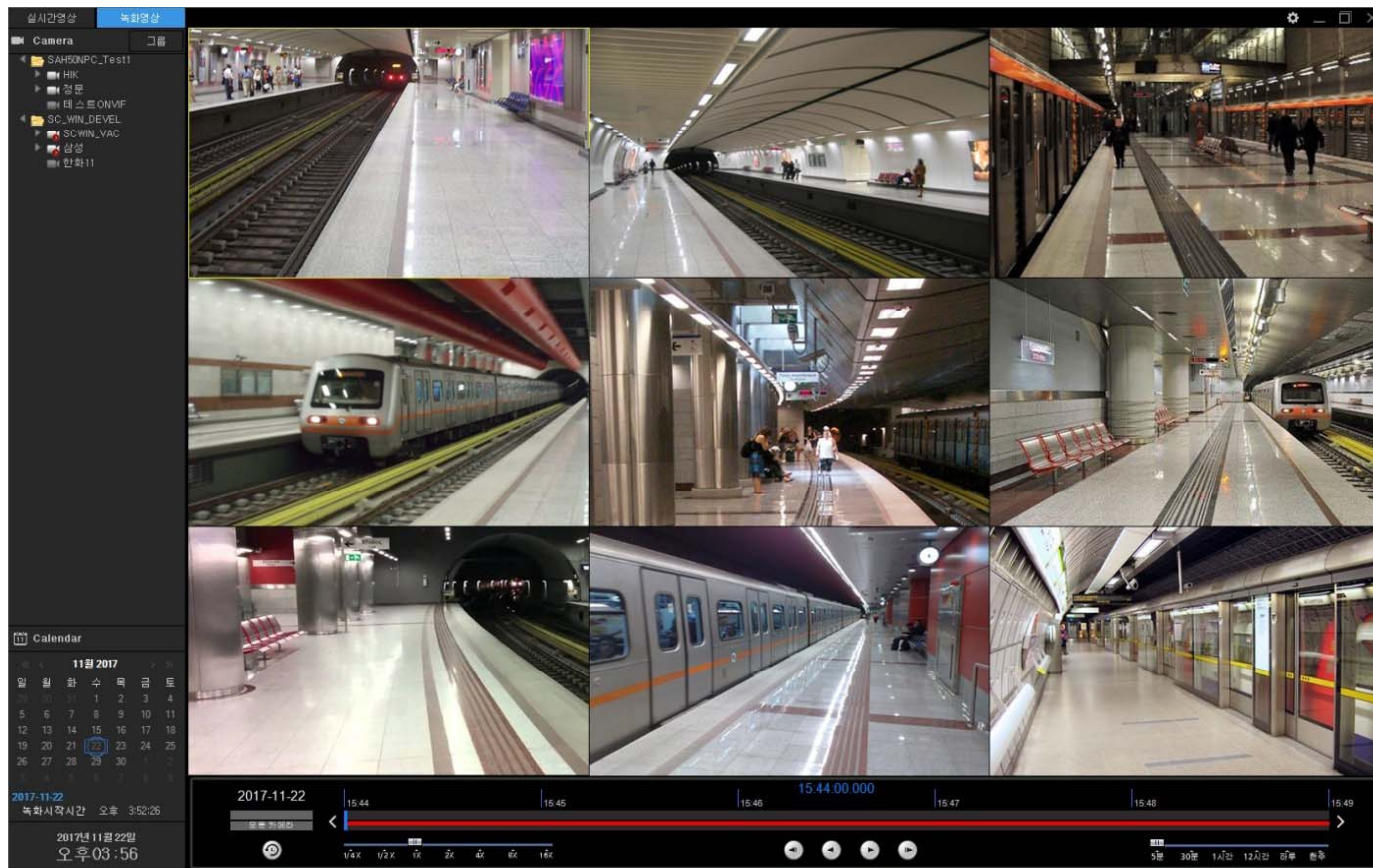
UI examples : Recording Viewer (Video Export)



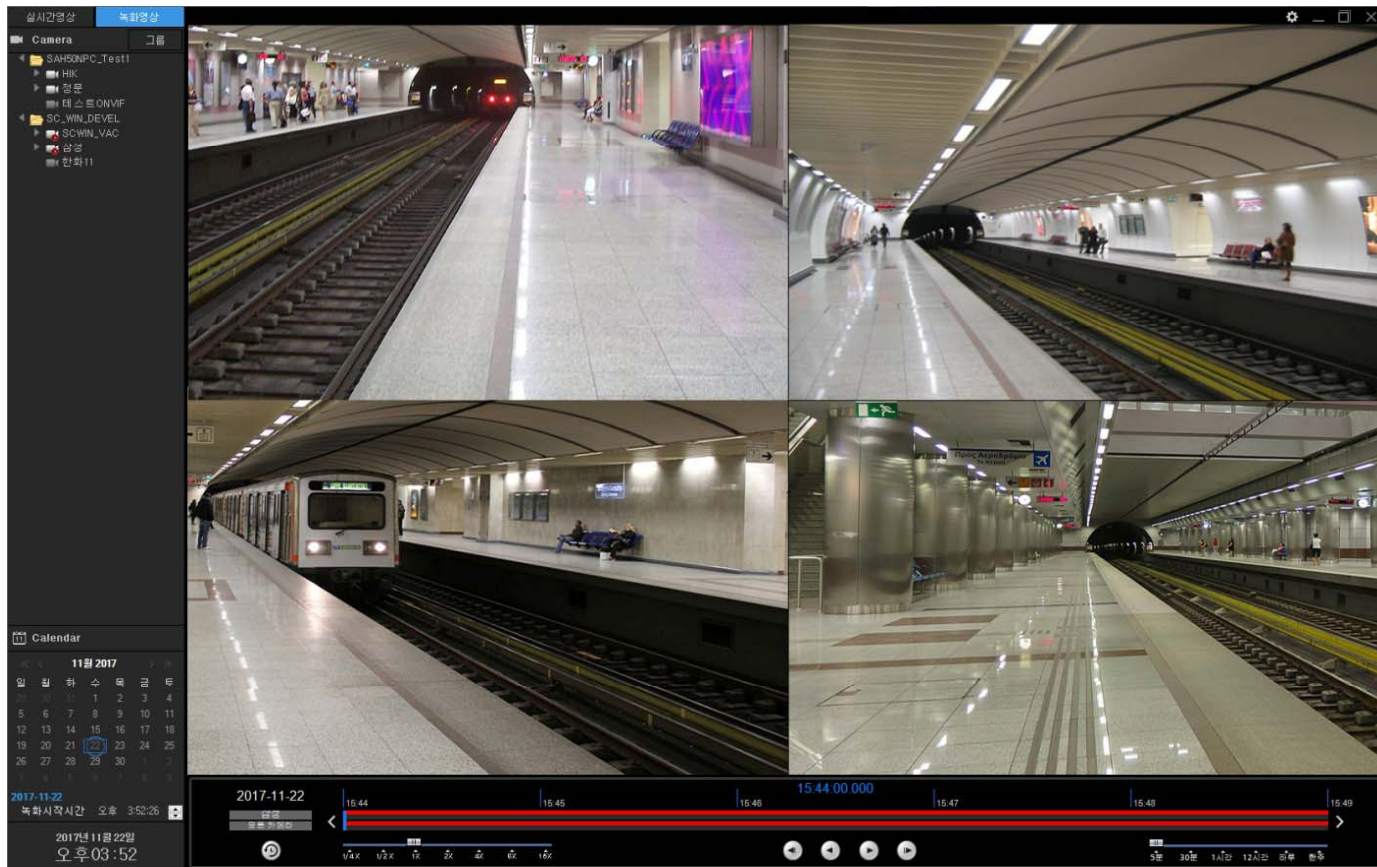
UI examples : Recording Viewer (Video Export)



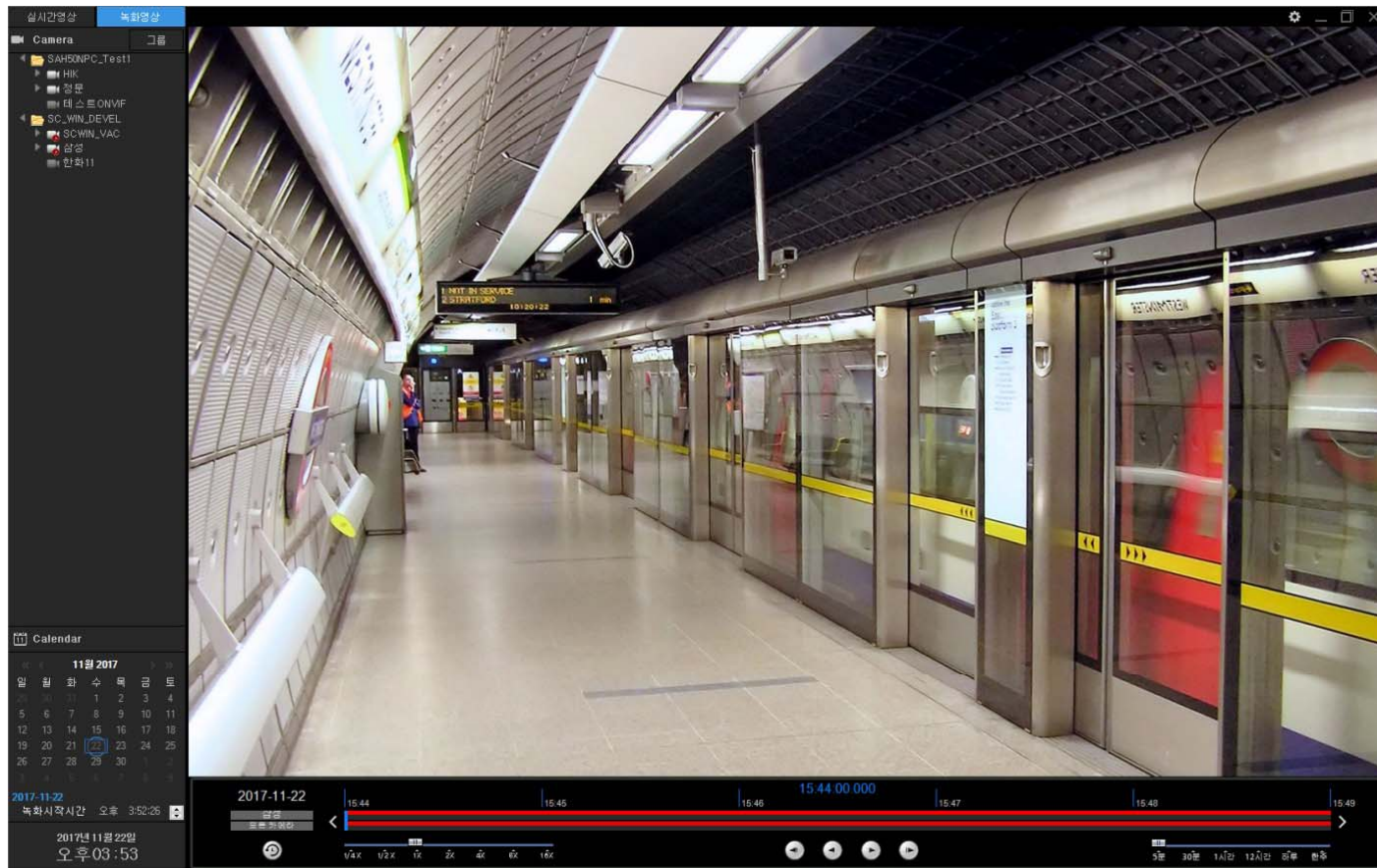
UI examples : 9 Channel Recording View



UI examples : 4 Channel Recording View



UI examples : 1 Channel Recording View





Thank you!

AddPac Technology Co., Ltd.
Sales and Marketing

Phone +82.2.568.3848 (KOREA)

FAX +82.2.568.3847 (KOREA)

E-mail : sales@addpac.com