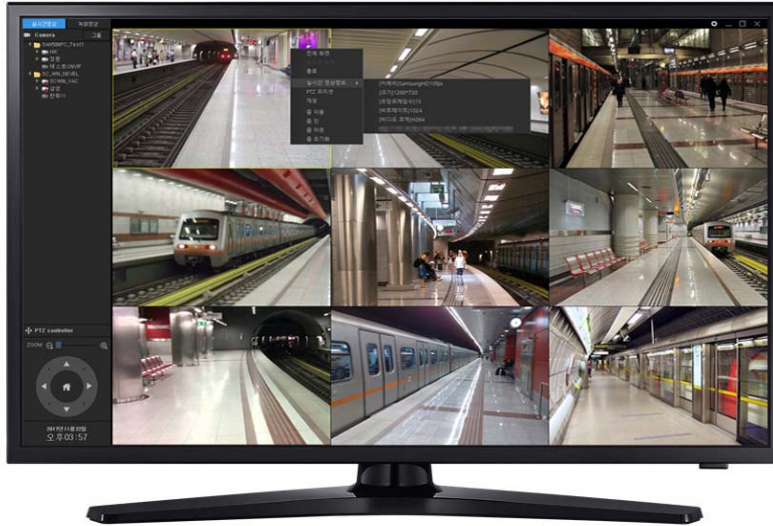


# CCTV Streaming & Recording Service Topology, etc



***AddPac***

**AddPac Technology**

Sales and Marketing

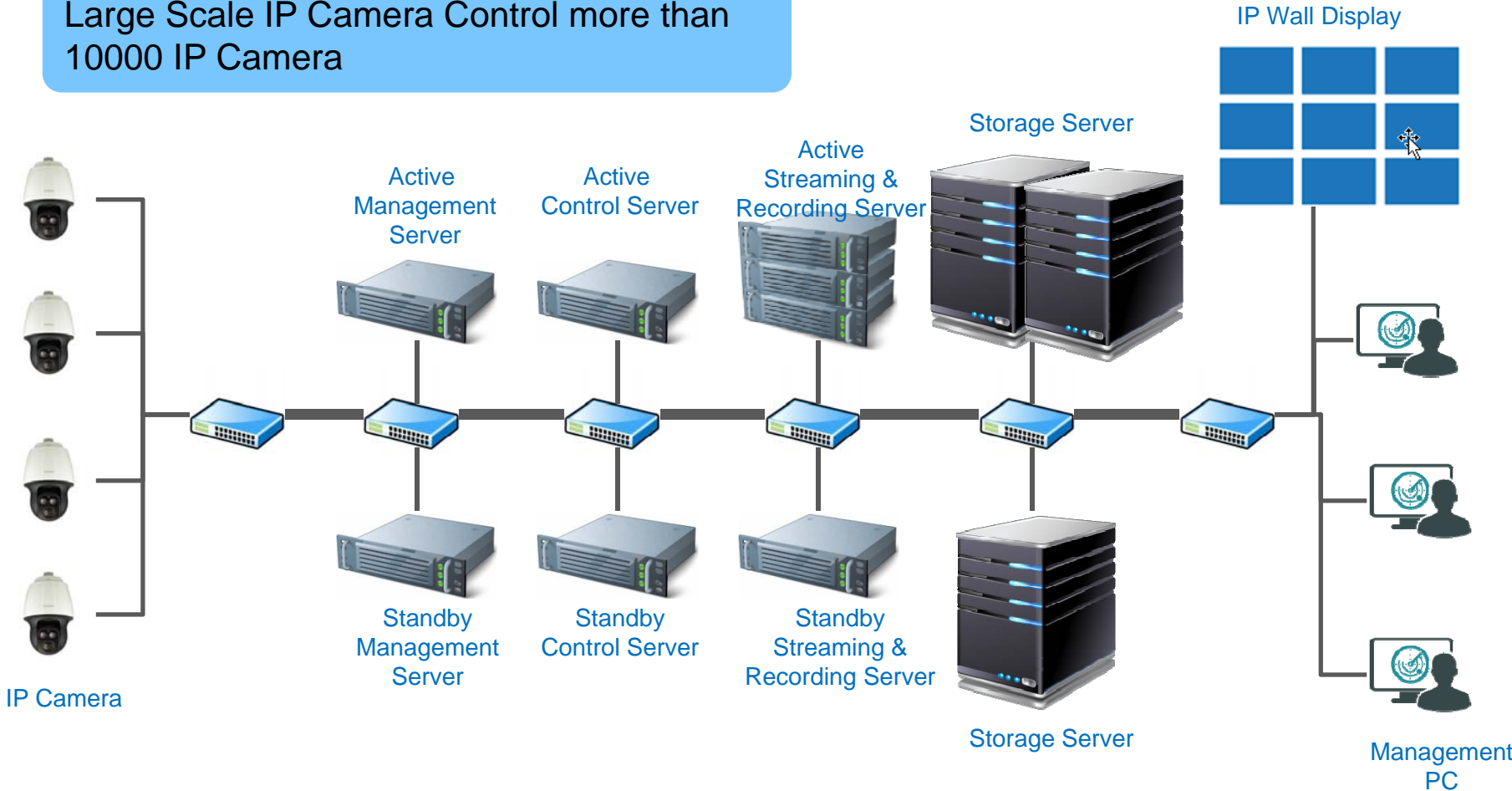
# Contents

- Network Service Diagram
- Storage Interface Type
- Public Internet Service Scheme
- Streaming Server Bandwidth Estimation
- Streaming and Recording Server Integrated Type



# Network Service Diagram

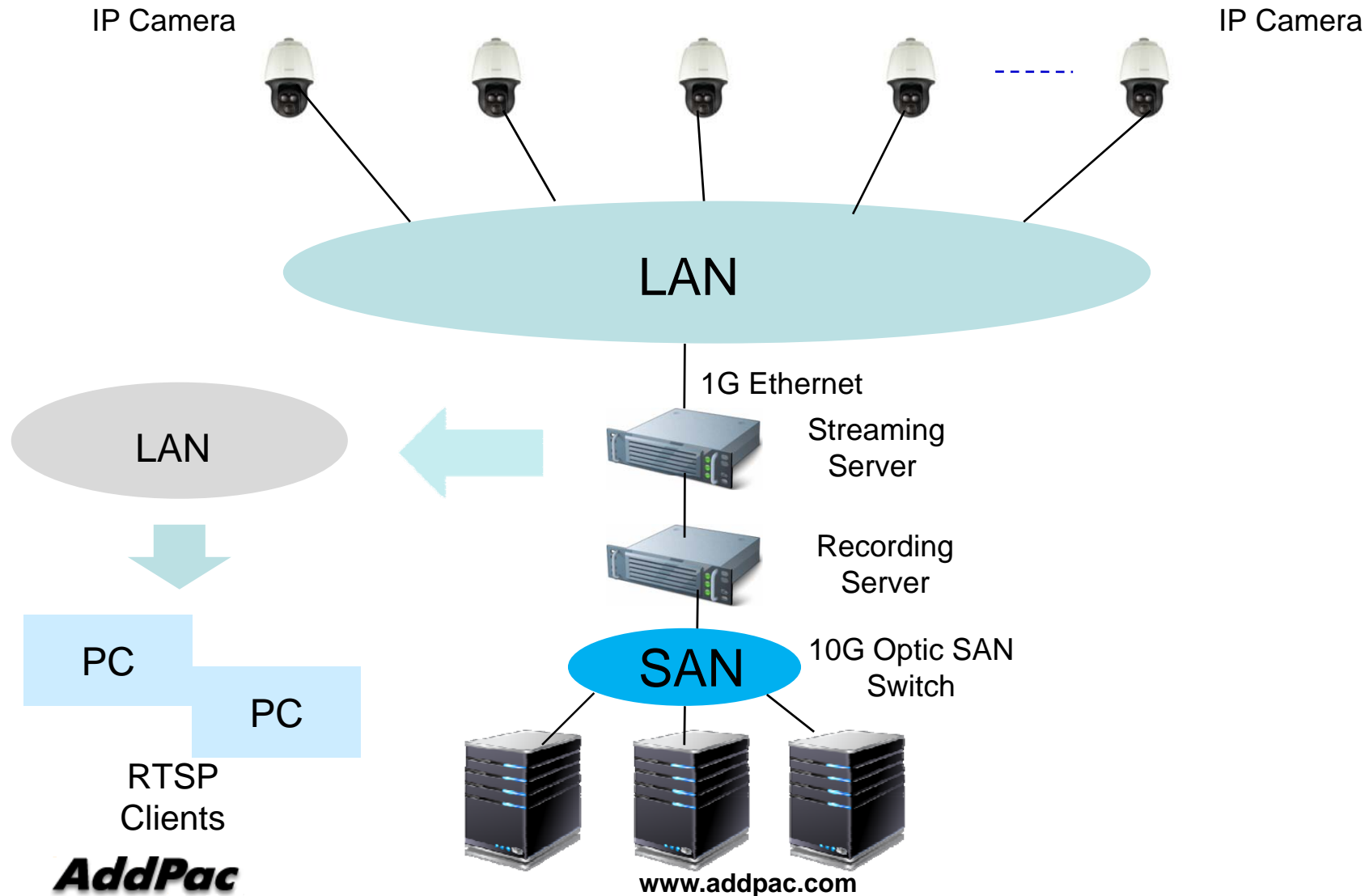
Large Scale IP Camera Control more than 10000 IP Camera



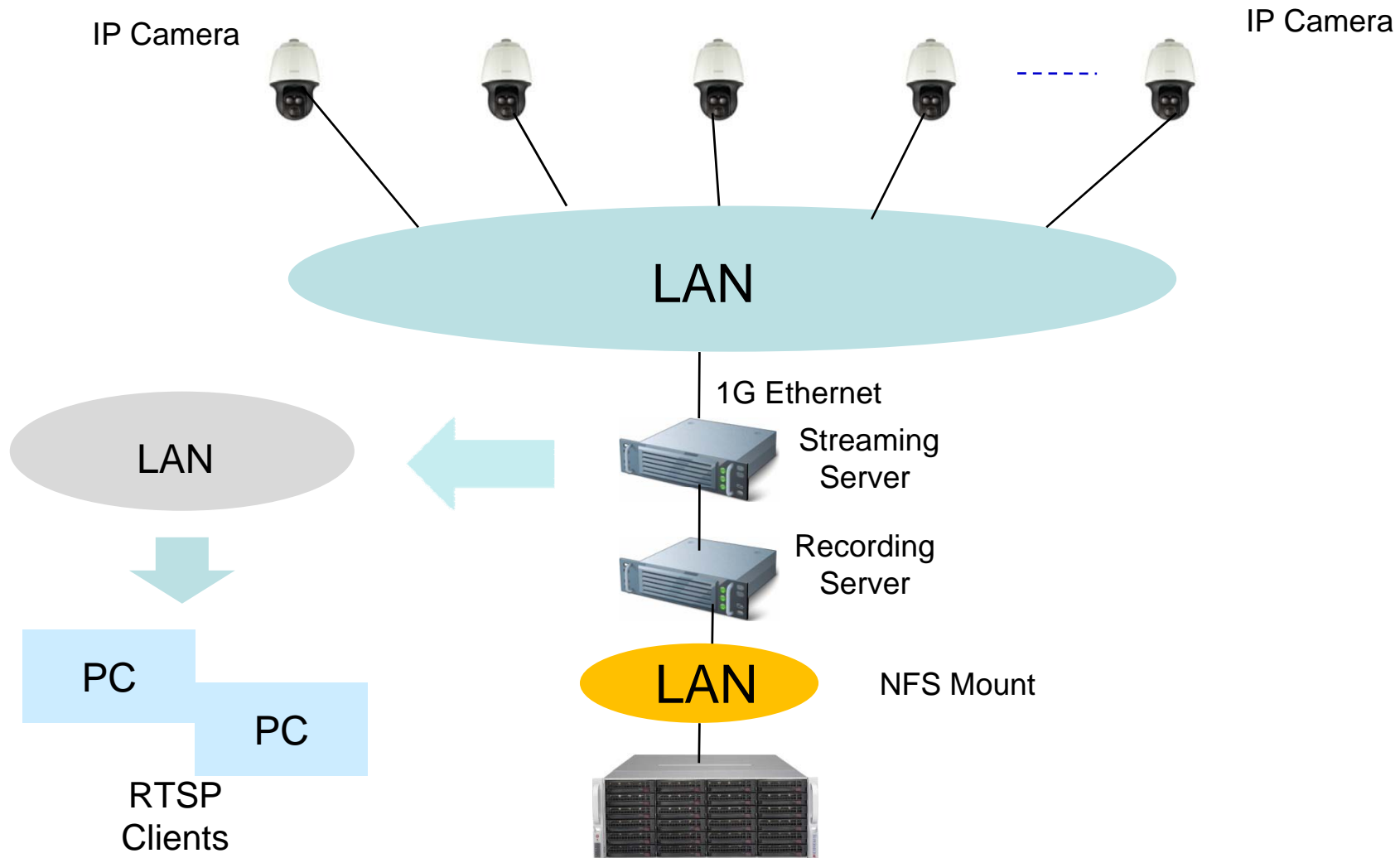


# Storage Interface

# SAN based Storage Interface (Expensive)



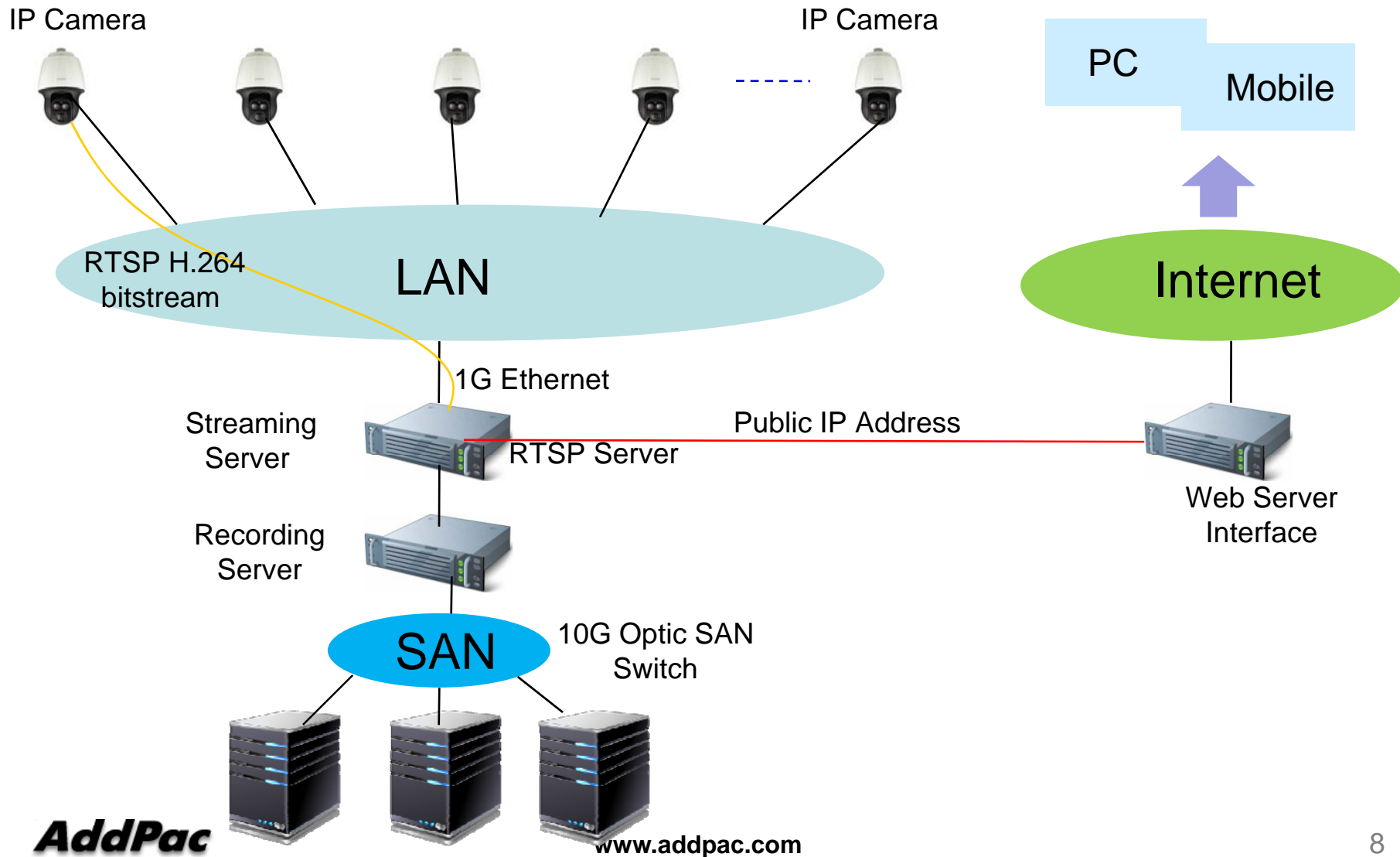
# NFS based Simple Storage Interface (Inexpensive)





# Internet Service Scheme Using Dual LAN Card (Streaming Server)

# Internet Service using Dual LAN Card

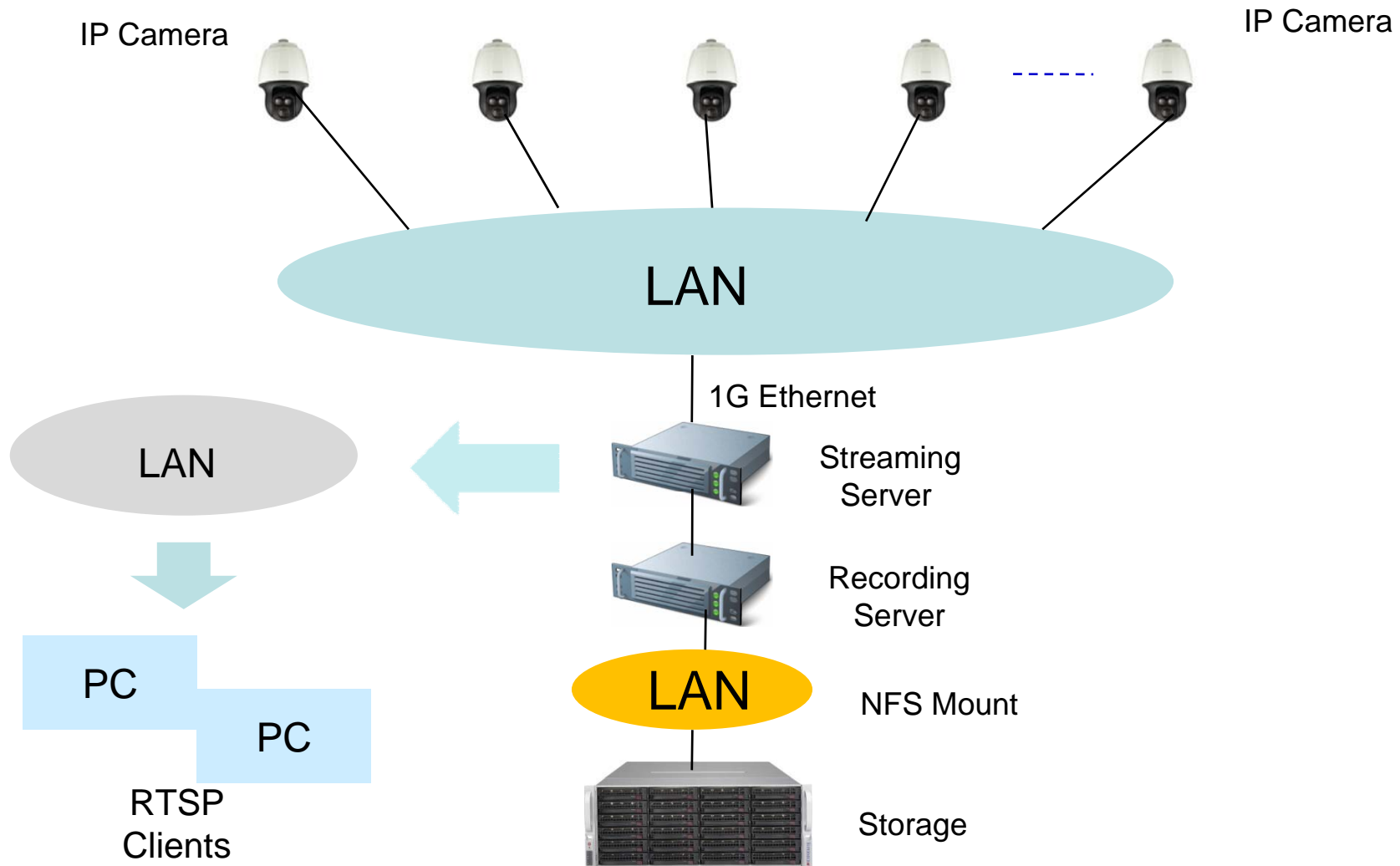






# Streaming Server Bandwidth Estimation

# Network Diagram



# Streaming Server Bandwidth Estimation

## Quadruple Encoding

= Full HD + HD + D1 + CIF

= 8Mbps + 4Mbps + 1Mbps + 512K

= 13.5Mbps → **64channel** x 13.5 = 864Mbps

## Triple Encoding

= HD + D1 + CIF

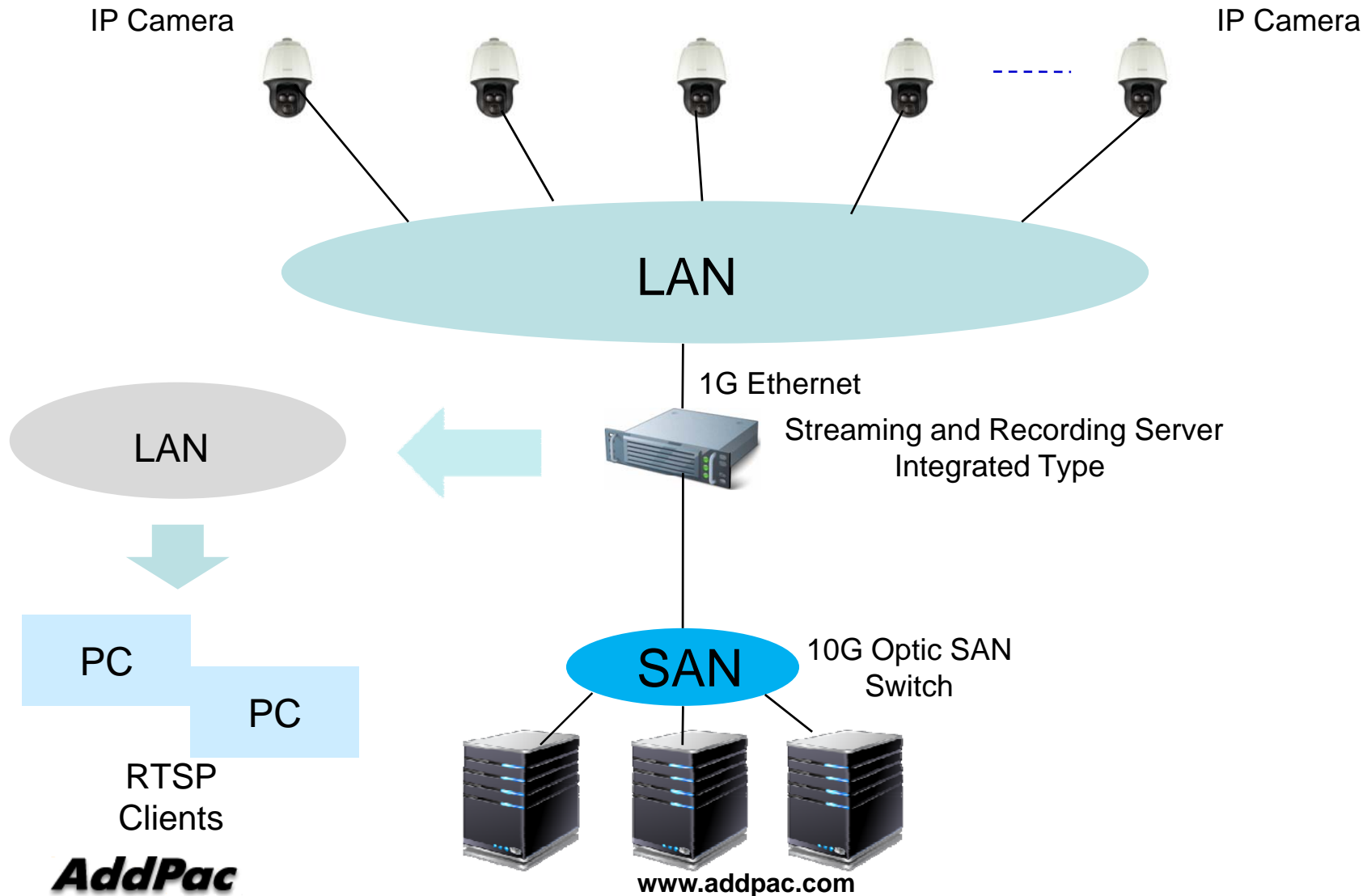
= 4Mbps + 1Mbps + 512K

= 5.5Mbps → **128 channel** x 5.5 = 704Mbps

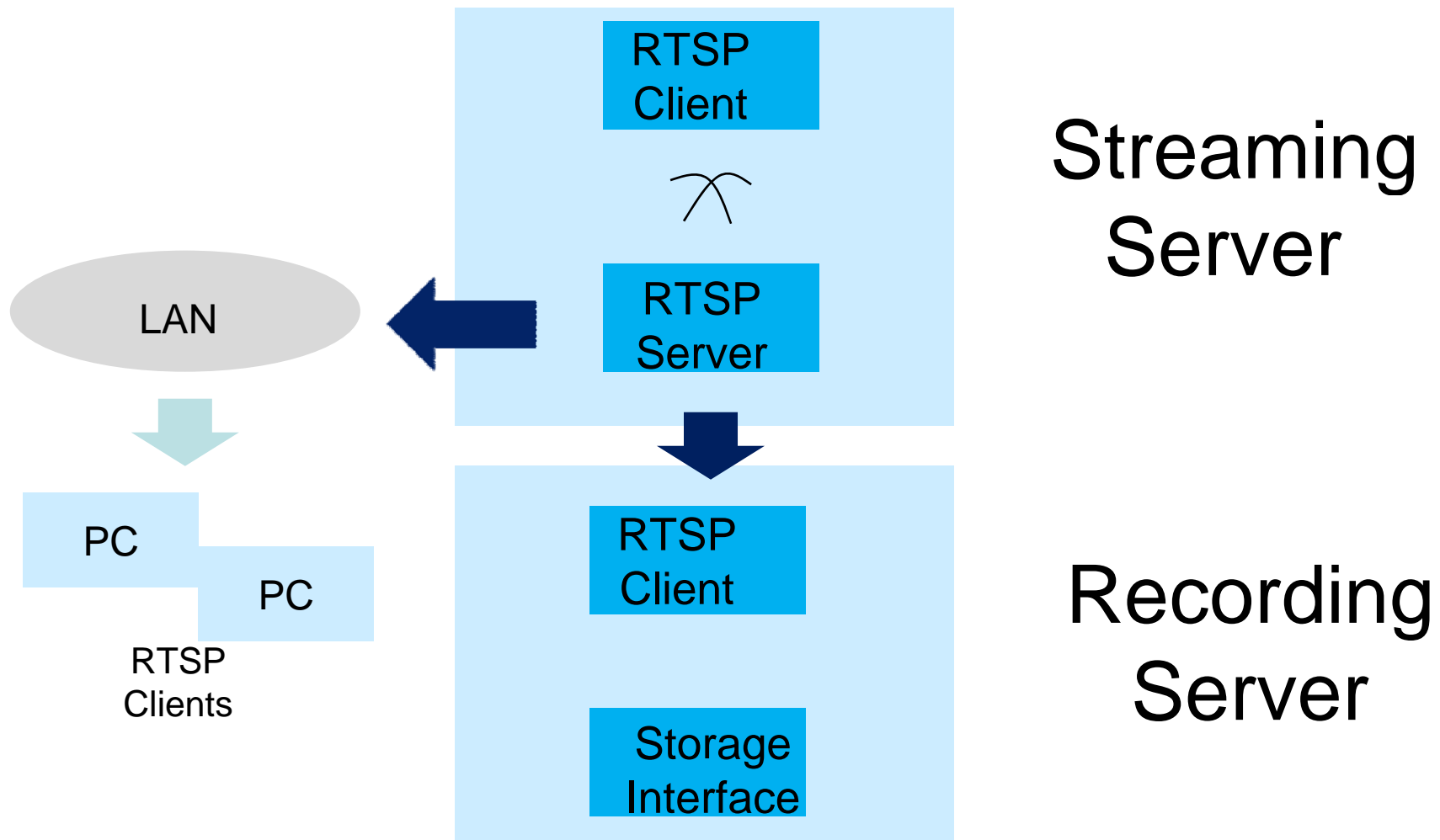


# Streaming and Recording Server Integrated Type

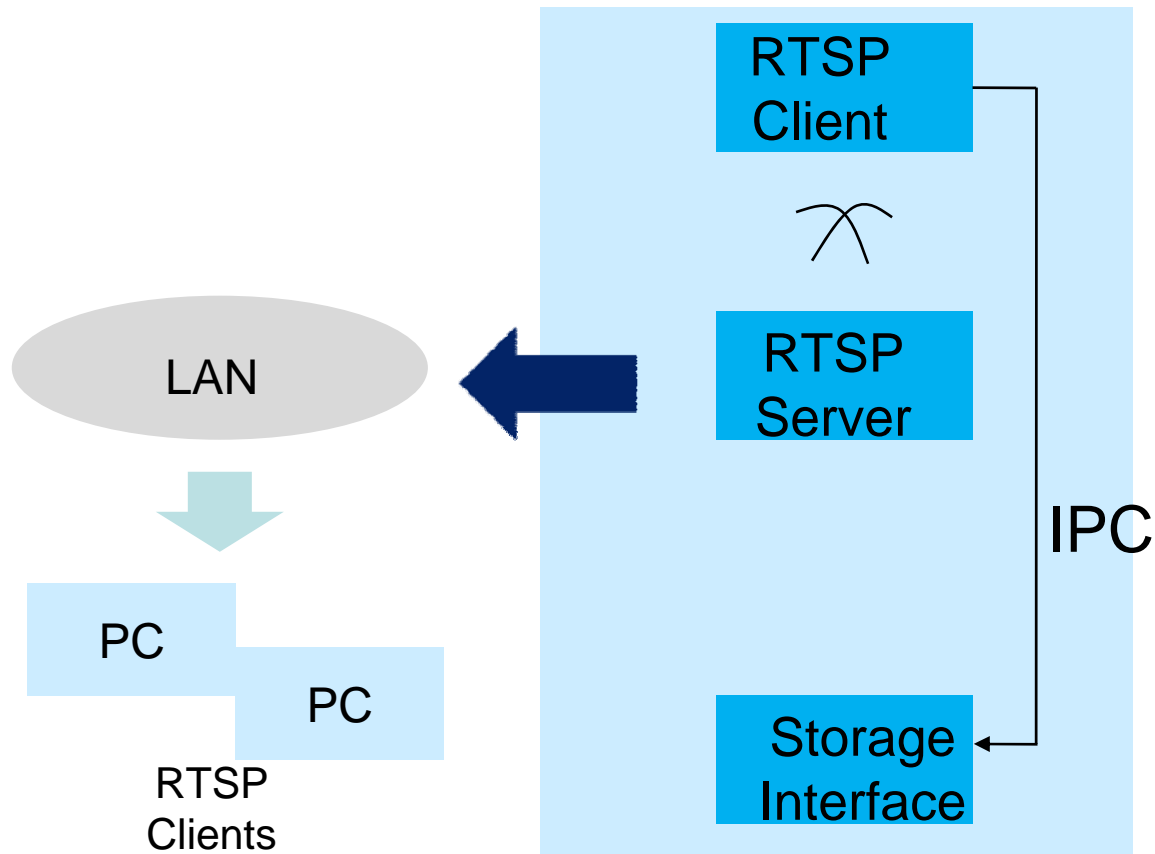
# Network Diagram



# Separated Type



# Integrated Type



Streaming +  
Recording  
Server



# Thank you!

**AddPac Technology Co., Ltd.**  
Sales and Marketing

Phone +82.2.568.3848 (KOREA)

FAX +82.2.568.3847 (KOREA)

E-mail : [sales@addpac.com](mailto:sales@addpac.com)