

AP-GTR2000GD

Gigabit Dual Power GPS NTP Server

High Performance GPS NTP Server Terminal Solution

Product Overview



AddPac

AddPac Technology

Sales and Marketing

www.addpac.com

Contents

- Product Overview
- Product Highlight
- Hardware Specification
- Simple NTP (Network Time Protocol)
- Network Diagram
- Ordering Information

Product Overview

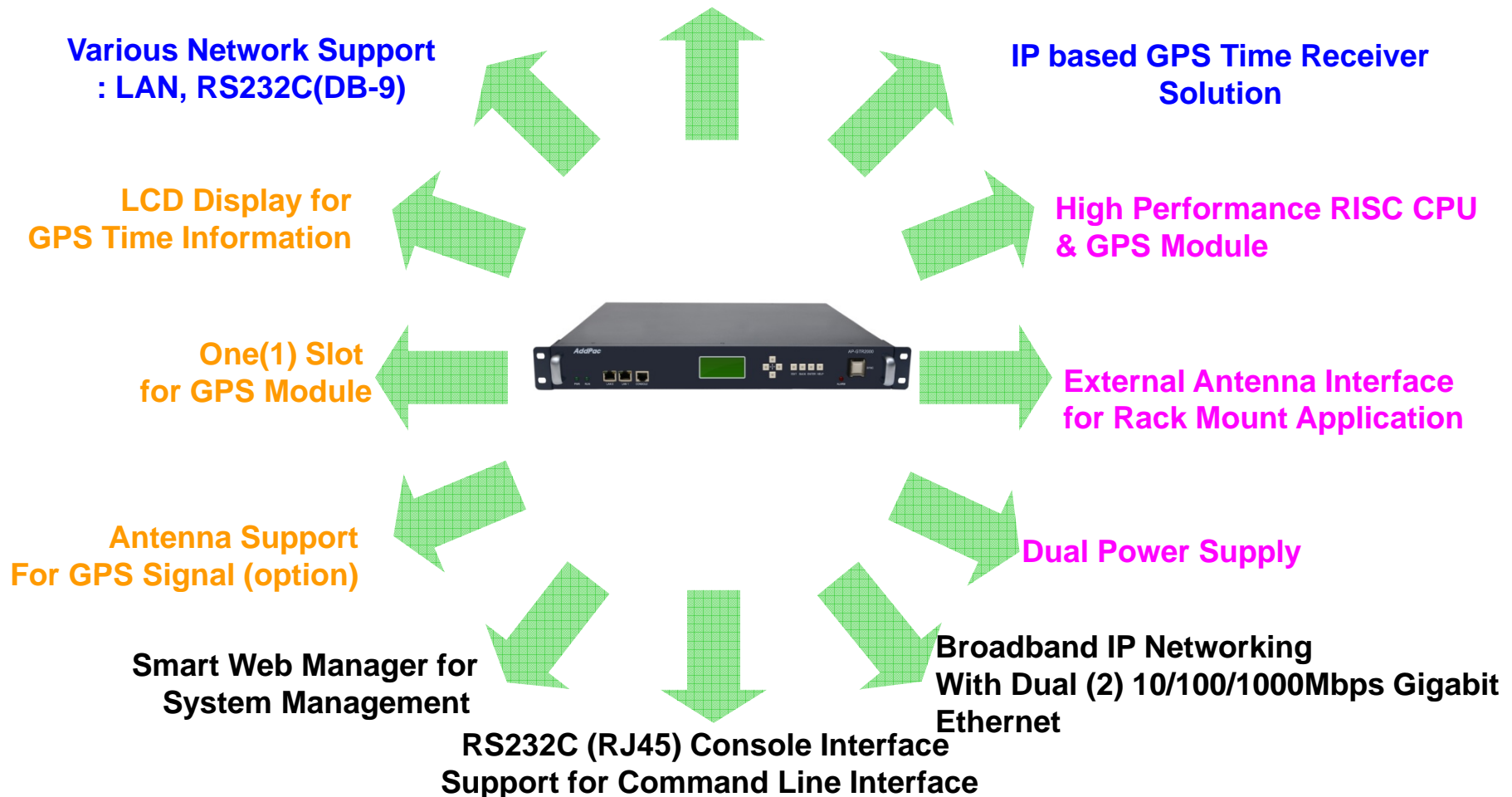
AP-GTR2000GD Gigabit Dual Power GPS NTP Server

- Embedded NTP Server with GPS Time Receiver Module
- High Performance GPS Time Receiver Terminal Solution
- IP based GPS Time Receiver (Location Free, etc)
- Dual RS232 Port for GPS Time Information Transmission
- LCD Display for GPS Time Information
- External Antenna Interface Support
- Dual Gigabit Ethernet Interface
- High Performance Antenna Support for GPS Signal
- Blue LAMP for Device Status
- Smart Web Manager for System Configuration & Management
- Window, Linux Simple Socket API Program Support
- Firmware Upgradeable Architecture
- Dual Power Supply for Redundancy

Product Highlights

AP-GTR2000GD Gigabit Dual Power GPS NTP Server

High Performance Embedded NTP Server Solution



Hardware Specification

AP-GTR2000GD Gigabit Dual Power GPS NTP Server

RISC
CPU

High-end
GPS

- RISC Microprocessor Computing Power
- High-end GPS Module Hardware Architecture
- One(1) Module Slot for GPS Module
- LCD Display at Front Side
- Blue LAMP
- Two(2) 10/100/1000Mbps Gigabit Ethernet Interface
- Dual(2) DB-9 RS232C Interface
- Internal Dual Power Supply
- Rack Mount Bracket (Option)
- GPS Antenna (Option)
- Option Module : AP-GPS-RS232
 - Two(2) DB-9 RS232C Interface Port
 - GPS Antenna Interface Port

Hardware Specification

AP-GTR2000GD Gigabit Dual Power GPS NTP Server

RISC
CPU

High-end
GPS

Front Side



Two(2) 10/100/1000Mbps
LAN Ports

RS232C Console

Status LCD

On-Air Blue LAMP
& Switch

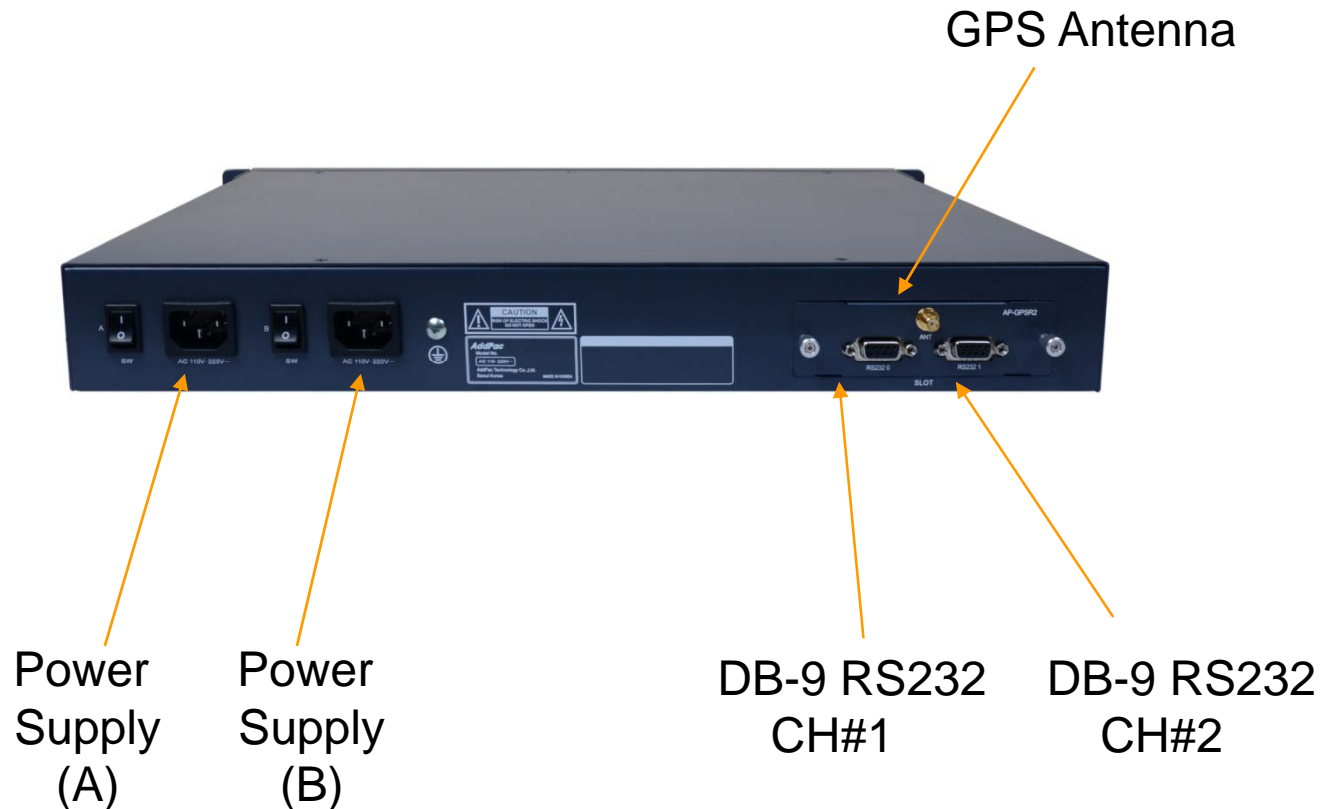
Hardware Specification

AP-GTR2000GD Gigabit Dual Power GPS NTP Server

RISC
CPU

High-end
GPS

Back Side



Hardware Specification

AP-GTR2000GD Gigabit Dual Power GPS NTP Server

RISC
CPU

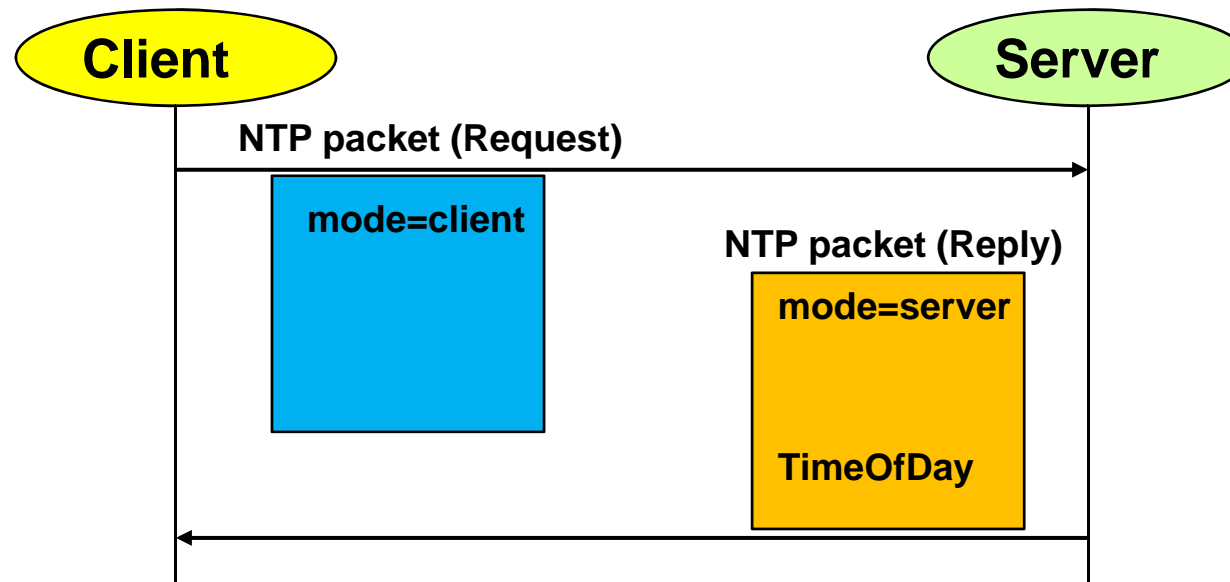
High-end
GPS

GPS Antenna

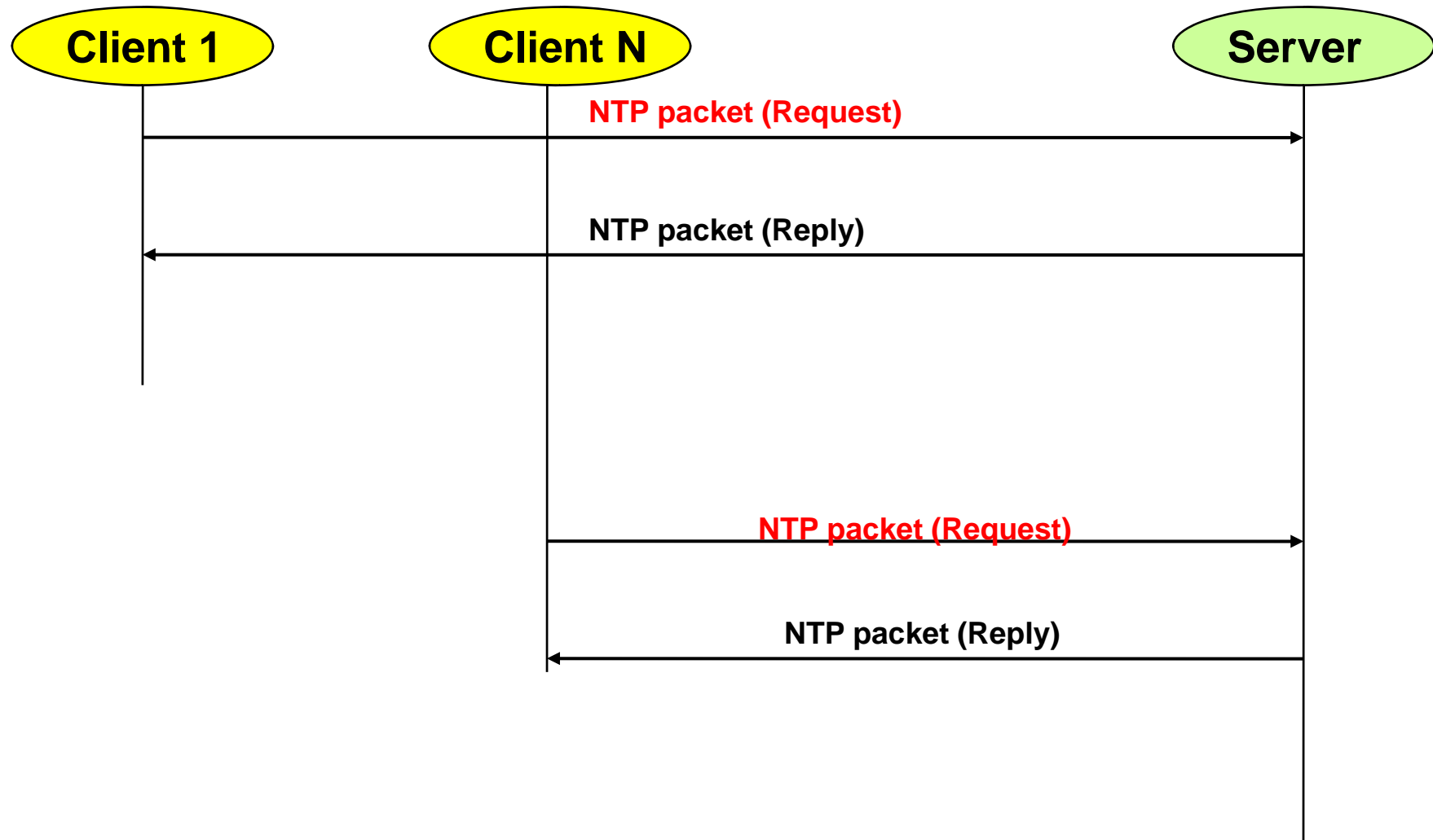


SNTP (Simple Network Time Protocol)

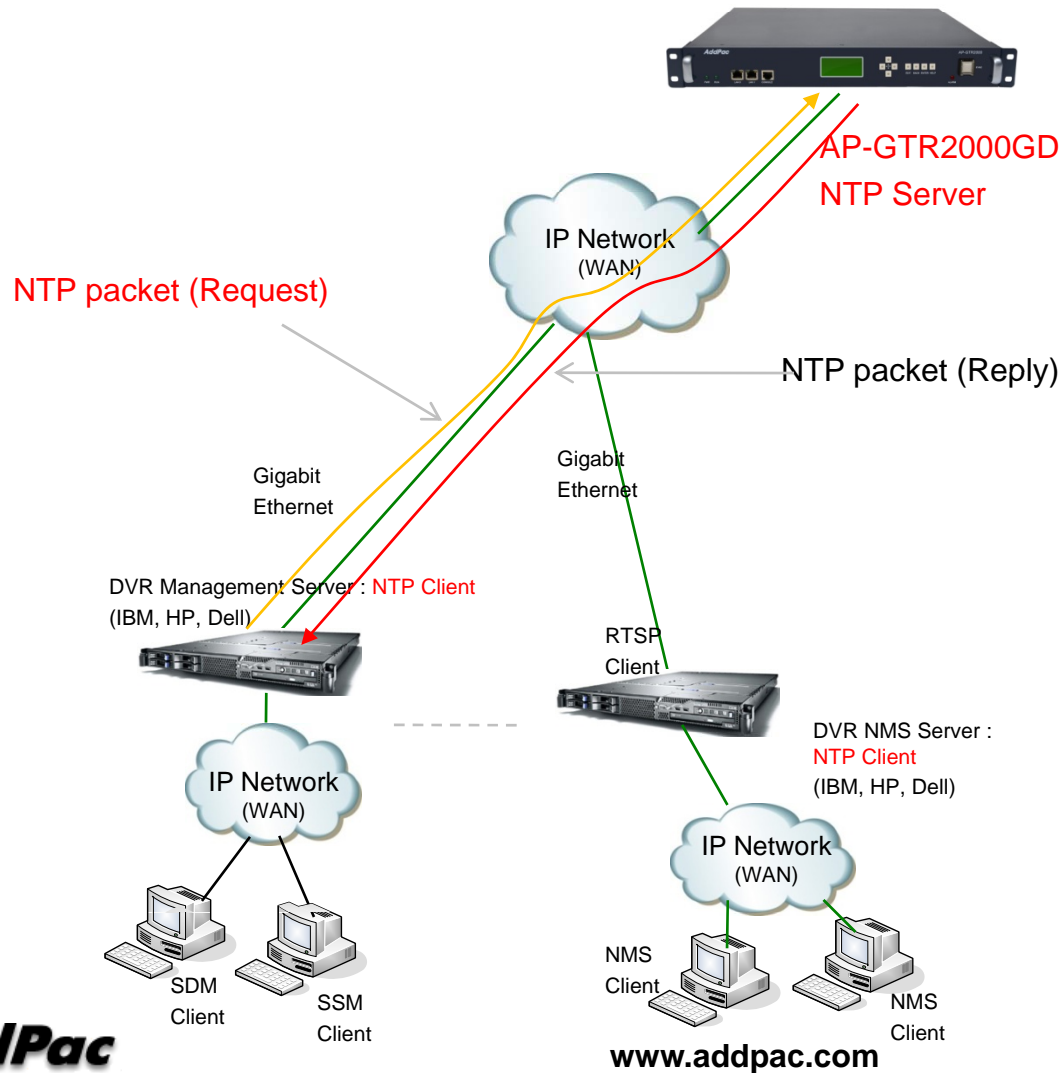
- Transport : UDP (port number 123)
- Protocol Version : 4
- Client/Server Mode



SNTP (Simple Network Time Protocol)

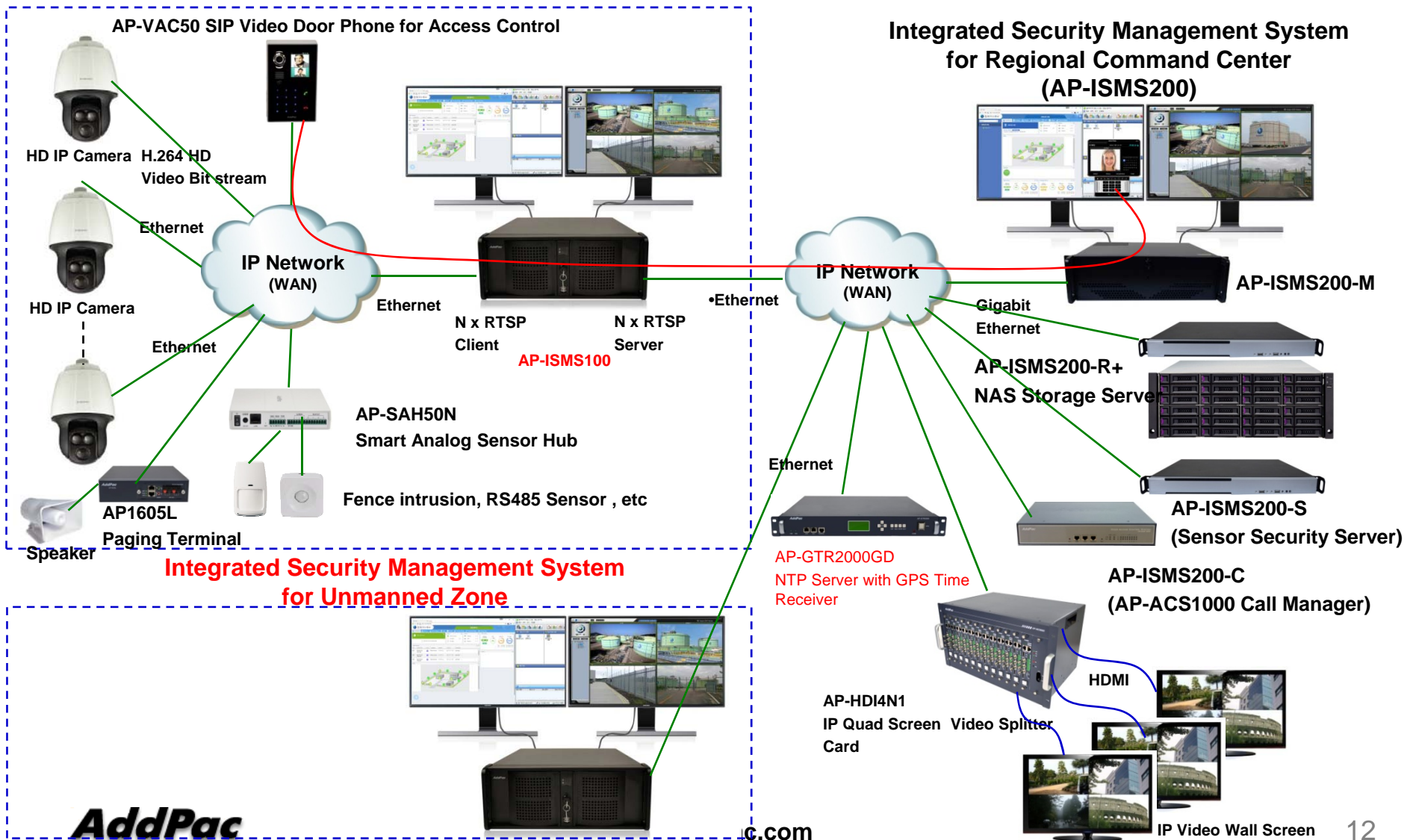


SNTP (Simple Network Time Protocol)



Network Diagram

AP-GTR2000GD Gigabit Dual Power GPS NTP Server



Ordering Information

AP-GTR2000GD Gigabit Dual Power GPS NTP Server

- **AP-GTR2000GD Gigabit Dual Power GPS NTP Server**
 - AP-GTR2000 Main Body
 - RISC Microprocessor with GPS Module
 - Two(2) Gigabit Ethernet Interface
 - Dual Power Supply
 - Option : AP-GPS-RS232 Module
 - Including Network Cable Set & Power Supply Cable, etc.
- **Built-in APOS Internetworking Software for AP-GTR2000GD**
- **Including 1 Year Hardware Warranty**
- **Product Documents**
 - Install and Operation Guide (PDF)
- **Pricing**
 - AddPac Technology Regional Sales Manager
 - Authorized Sales and Marketing Representatives
 - Please Contact www.addpac.com



Thank you!

AddPac Technology Co., Ltd.
Sales and Marketing

Phone +82.2.568.3848 (KOREA)

FAX +82.2.568.3847 (KOREA)

E-mail sales@addpac.com