

AP-GTR250

Compact Size Embedded GPS NTP Server

Compact Size GPS based Embedded NTP Server Solution

Product Overview



AddPac

AddPac Technology

Sales and Marketing

www.addpac.com

Contents

- Product Overview
- Hardware Specification
- APOS™ Service Features
- NTP(Network Time Protocol) Service
- Network Diagram
- Ordering Information

Product Overview

AP-GTR250 Embedded GPS NTP Server

- Compact Size Embedded NTP Server Solution for SMB
- IP based GPS Time Receiver (Location Free, etc)
- Embedded NTP Server Solution
- Simple NTP Protocol Support
- External Antenna Interface Support
- Various Antenna Support for GPS Signal (Option, Default : 10m GPS Antenna)
- Hour/Minute/Sec GPS Time Display LED
- LED Support for GPS SYNC Indication
- RS232C Console Support for Command Line Interface
- One(1) 10/100Mbps Fast Ethernet Interface Support
- Smart Web Manager for System Configuration & Management
- Window, Linux Simple Socket API Program Support
- Firmware Upgradeable Architecture

Hardware Specification

AP-GTR250 Embedded GPS NTP Server

RISC
CPU

High-end
GPS

- RISC Microprocessor Computing Power
- High-end GPS Hardware Architecture
- External GPS Antenna Interface Support
- GPS Time Display LED (Hour/Minute/Sec)
- GPS Status LED Support at Front Side
- One(1) 10/100Mbps Fast Ethernet Interface
- External Power Supply with Power On/Off Switch
- GPS Antenna (Option) : Default 10M
- Dimension : 28mm x 125mm x 90mm (H x W x D)
- Weight : 0.5Kg

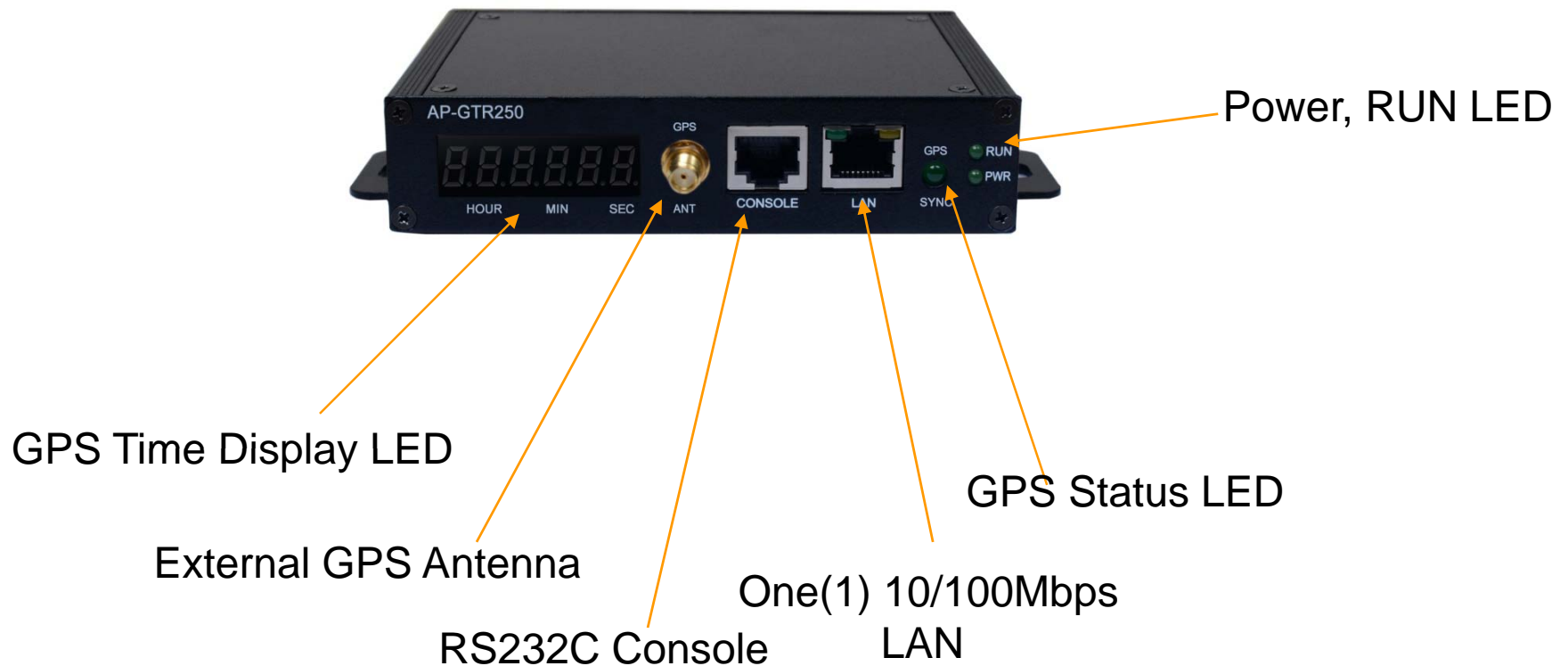
Hardware Specification

AP-GTR250 Embedded GPS NTP Server

RISC
CPU

High-end
GPS

Front Side



Hardware Specification

AP-GTR250 Embedded GPS NTP Server

RISC
CPU

High-end
GPS

Back Side



External Power
Supply

Power Switch

Hardware Specification

AP-GTR250 Embedded GPS NTP Server

RISC
CPU

High-end
GPS

GPS Antenna

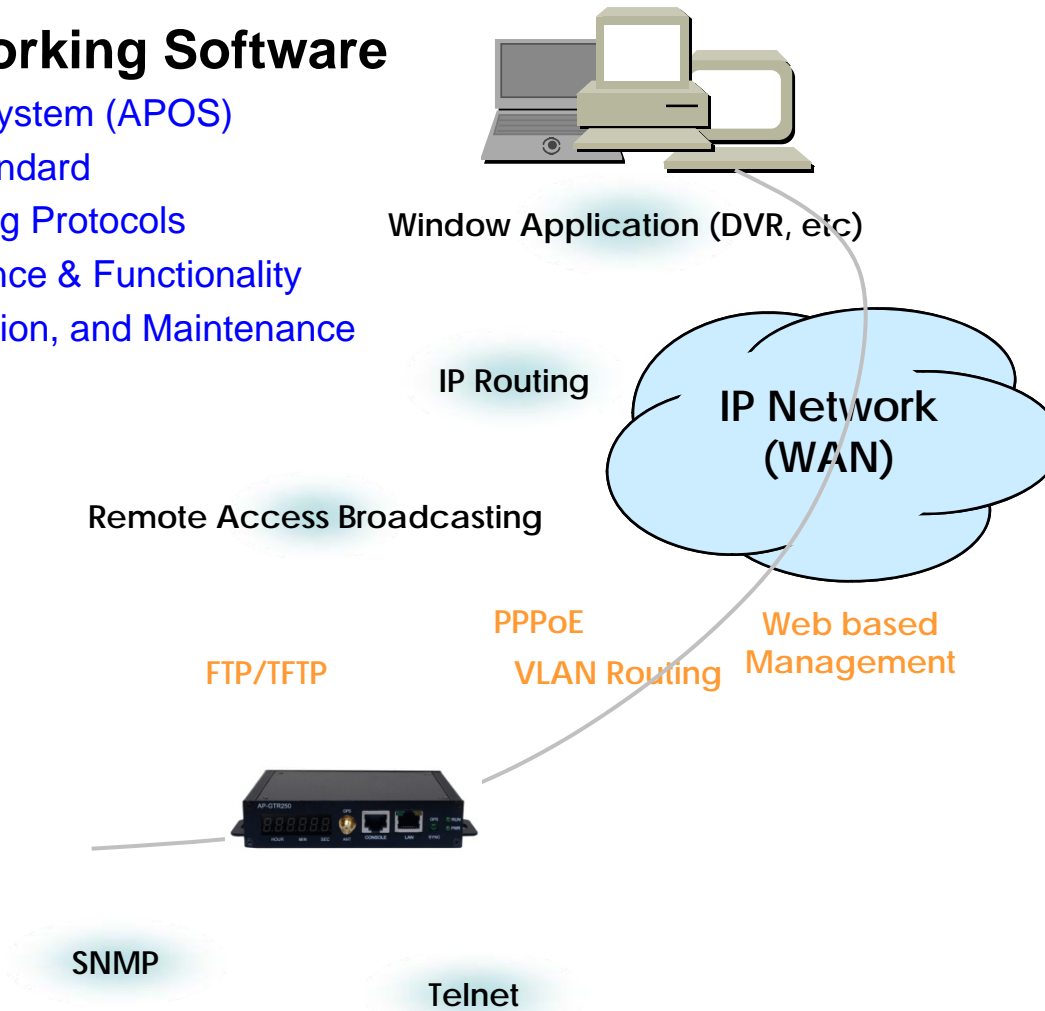


APOS™ Service Features

AP-GTR250 Embedded GPS NTP Server

- **APOS Internetworking Software**

- AddPac Operating System (APOS)
- Support Industry Standard
- Integrated Networking Protocols
- Optimized Performance & Functionality
- Easy to use, Installation, and Maintenance



APOS™ Service Features

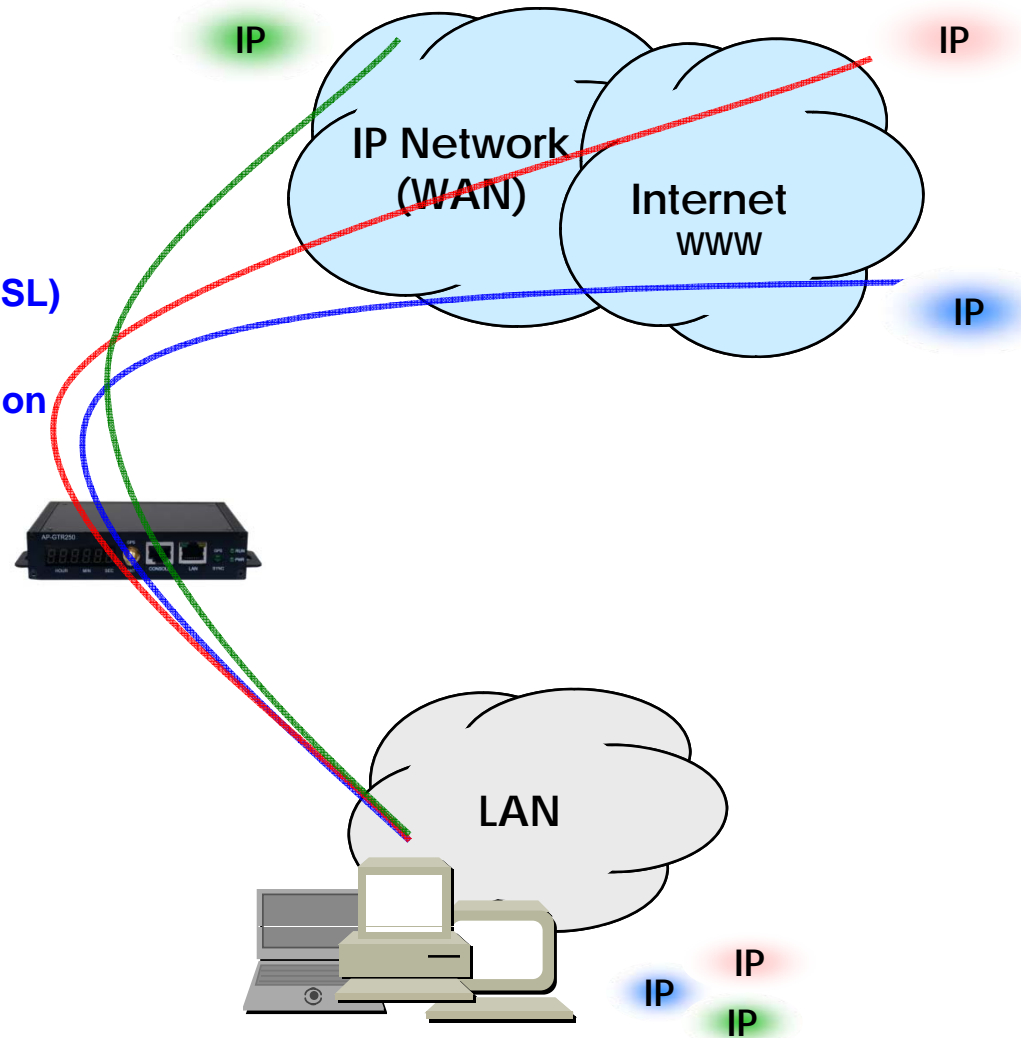
AP-GTR250 Embedded GPS NTP Server

- **IP Routing Protocols**

- Multi-protocol Internetworking Services
- Static & Default IP routing

- **WAN Protocols**

- Point-to-Point Protocol (PPPoE for ADSL)
- IEEE 802.3 Ethernet
- PPTP support for secure communication



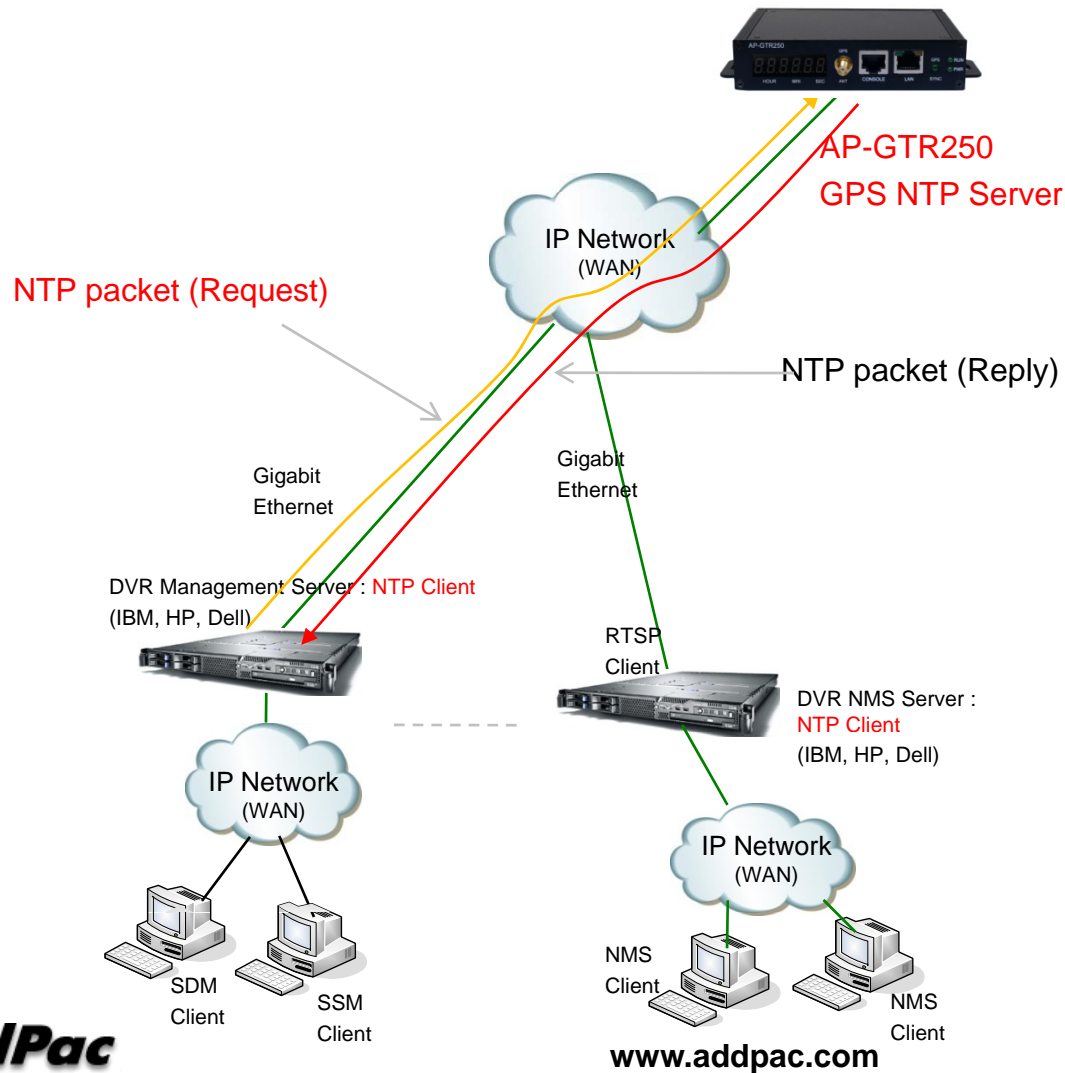
APOS™ Service Features

AP-GTR250 Embedded GPS NTP Server

- **Network Managements**
 - Standard SNMP Agent (MIB v2) Support
 - Remote Management using Console, Telnet
 - Web based Management using HTTP Server Interface
- **Security Functions**
 - Standard & Extended IP Access List
 - Enable/Disable for Specific Network Protocols
 - Multi-level User Account Management
 - Auto-disconnect for Telnet/Console Sessions
 - PPP User Authentication Supports (PAP & CHAP)
- **Operation & Managements**
 - System Performance Analysis for Process, CPU, Connection Interface
 - Debugging, System Auditing, and Diagnostics Support
 - System Booting and Auto-rebooting with Watchdog Feature
 - System Managements with Data Logging
 - IP Traffic Statistics with Accounting

SNTP (Simple Network Time Protocol)

AP-GTR250 Embedded GPS NTP Server



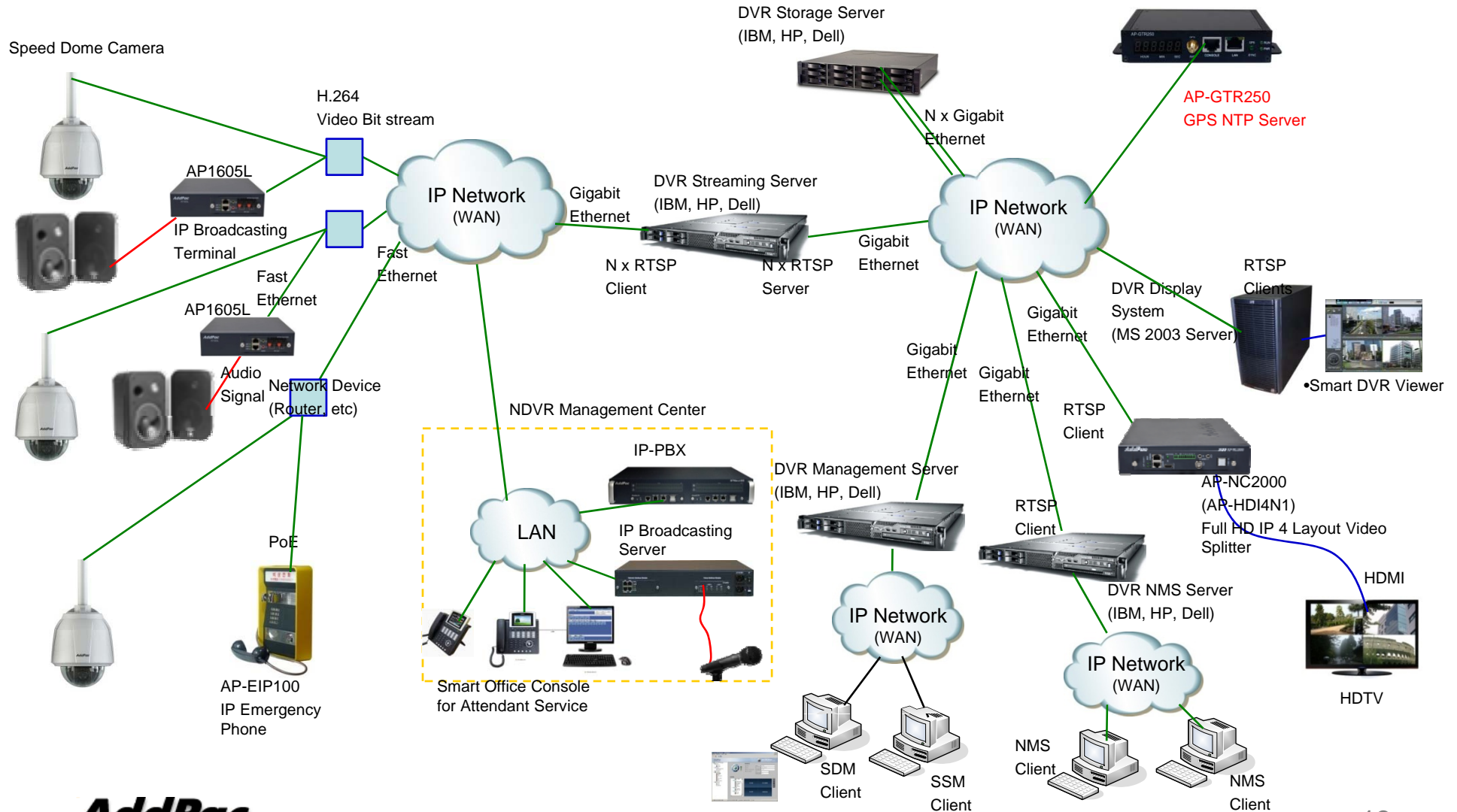
APOS™ Service Features

AP-GTR250 Embedded GPS NTP Server

- **Network Protocols**
 - DHCP Server & Relay Functions
 - Network Address Translation (NAT) Function
 - Port Address Translation (PAT) Function
 - Transparent Bridging (IEEE Standard) Function
 - Spanning Tree Bridging Protocol Support
 - Remote Bridging Support
 - Concurrent Routing and Bridging Support
 - Cisco Style Command Line Interface (CLI)
 - Network time Protocol (NTP) Support

Network Diagram

AP-GTR250 Embedded GPS NTP Server



Ordering Information

AP-GTR250 Embedded GPS NTP Server

- **AP-GTR250 GPS Time Receiver Terminal Hardware**
 - AP-GTR250 Main Body
 - RISC Microprocessor with GPS Module
 - Including Network Cable Set & Power Supply, etc.
- **Built-in APOS Internetworking Software for AP-GTR250**
- **Including 1 Year Hardware Warranty**
- **Product Documents**
 - Install and Operation Guide (PDF)
- **Pricing**
 - AddPac Technology Regional Sales Manager
 - Authorized Sales and Marketing Representatives
 - Please Contact www.addpac.com



Thank you!

AddPac Technology Co., Ltd.
Sales and Marketing

Phone +82.2.568.3848 (KOREA)

FAX +82.2.568.3847 (KOREA)

E-mail sales@addpac.com