

AP-GTR250

Embedded GPS NTP Server

Smart Web Manager



AddPac

AddPac Technology

Sales and Marketing

www.addpac.com

Contents

- Product Overview
- Hardware Specification
- Smart Web Manager
- SNTP (Simple Network Time Protocol) Server Diagram



Product Overview

AP-GTR250 Embedded GPS NTP Server

- Compact Size Embedded NTP Server Solution for SMB
- IP based GPS Time Receiver (Location Free, etc)
- Embedded NTP Server Solution
- Simple NTP Protocol Support
- External Antenna Interface Support
- Various Antenna Support for GPS Signal (Option, Default : 10m GPS Antenna)
- Hour/Minute/Sec GPS Time Display LED
- LED Support for GPS SYNC Indication
- RS232C Console Support for Command Line Interface
- One(1) 10/100Mbps Fast Ethernet Interface Support
- Smart Web Manager for System Configuration & Management
- Window, Linux Simple Socket API Program Support
- Firmware Upgradeable Architecture

Hardware Specification

AP-GTR250 Embedded GPS NTP Server

RISC
CPU

High-end
GPS

- RISC Microprocessor Computing Power
- High-end GPS Hardware Architecture
- External GPS Antenna Interface Support
- GPS Time Display LED (Hour/Minute/Sec)
- GPS Status LED Support at Front Side
- One(1) 10/100Mbps Fast Ethernet Interface
- External Power Supply with Power On/Off Switch
- GPS Antenna (Option) : Default 10M
- Dimension : 28mm x 125mm x 90mm (H x W x D)
- Weight : 0.5Kg

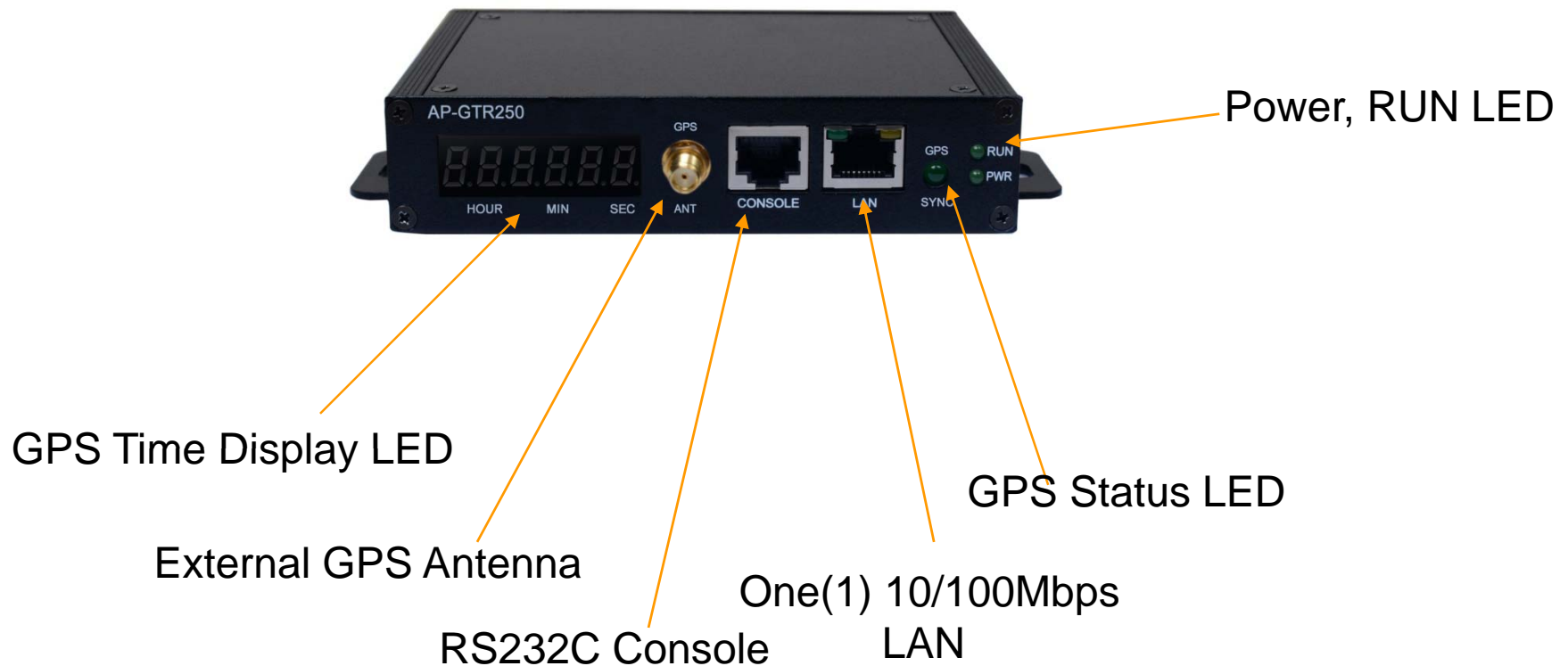
Hardware Specification

AP-GTR250 Embedded GPS NTP Server

RISC
CPU

High-end
GPS

Front Side



Hardware Specification

AP-GTR250 Embedded GPS NTP Server

RISC
CPU

High-end
GPS

Back Side



External Power
Supply

Power Switch

Hardware Specification

AP-GTR1000 GPS based Embedded NTP Server

RISC
CPU

High-end
GPS

GPS Antenna





Smart Web Manager

Main View : System Information

Smart Web Manager
www.addpac.com

System Information

Model	AP-GTR250_G2
SW Version	8.51.018
Current Time	Mon Jun 3 15:09:46 2019
Network Information	Static 172.17.209.112
WAN LINK Status	100Mbps FULL Duplex Link UP

Information

AddrPac Technology
Model : AP-GTR250_G2
H/W Version : 2.0
S/W Version : 8.51.018
Smart Web Version : 1.4
Smart Web Build : Mar 6 2019

Description

©AddPac Technology. all rights reserved.

Show System Information

- Model
- SW version
- Current Time
- Network Information
- WAN Link status

System : Language



Choose the basic language to be applied. English is set at default.

System : WAN Setup

Smart Web Manager
www.addpac.com

System
• Language
• WAN Setup
• System Time
• File Browser

Advanced
Miscellaneous

WAN & Tunneling Setup

WAN Setup

Hostname: GTR

IP Address: 172.17.209.112 A.B.C.D
Network Mask: 255.255.0.0 A.B.C.D
Default Router: 172.17.1.1 A.D.C.D

STATIC IP

DNS Server: Primary DNS Server
Secondary DNS Server

User name: _____
Password: _____

PPPoE(ADSL)

Authentication: (No Authentication)
 PAP (PPP Authentication Protocol)
 CHAP(Challenge Handshake Authentication Protocol)

DHCP

VLAN ID: 0

Auto

WAN Link Control

Speed: 100 10
 Manual

Duplex: full half

MAC(Hardware) Address: _____

Enable QoS (optional)

QoS Control

Bandwidth: _____ Kbps (default auto, 48-4096)
PPS: _____ pps (default auto, 50-2000)

Apply

Information
AddPac Technology
Model : AP-GTR250_G2
H/W Version : 2.0
S/W Version : 8.51.018
Smart Web Version : 1.4
Smart Web Build : Mar 6 2019

Description
This command sets up WAN port. The static IP address is to be assigned from the service provider and you can enter the assigned IP address. For DHCP and PPPoE, the IP address of the device can be changed. MAC Address change can be used only when necessary. It is recommended to use the address created by the user not the address of the device

This command sets up WAN port. The static IP address is to be assigned from the service provider and you can enter the assigned IP address. For DHCP and PPPoE, IP address of this device can be changed. MAC Address change can be used only when necessary. It is recommended to use the address created by the user not the address of the device

System : System Time

The screenshot shows the 'System Time' configuration page in the Smart Web Manager. The page is titled 'System Time' and is enclosed in a red dashed box. It features a left sidebar with navigation options: 'System' (Language, WAN Setup, System Time, File Browser), 'Advanced', and 'Miscellaneous'. The main content area includes: 'Current Time' (Mon Jun 3 15:14:09 2019), 'Time Zone' (Name: seoul, Offset: 9:00 (-23~23 hours) : (0~60 minutes)), and 'Set System Time' (Year, Month, Day, Hour, Min, Sec). An 'Apply' button is located at the bottom left of the configuration area. The right sidebar contains 'Information' (AddPac Technology, Model: AP-GTR250_G2, H/W Version: 2.0, S/W Version: 8.51.018, Smart Web Version: 1.4, Smart Web Build: Mar 6 2019) and 'Description' (Setup System Time). The footer of the page reads '©AddPac Technology. all rights reserved.'

- System Time**
- Show current time
 - Configure time zone
 - Configure system time

System : File Browser

Smart Web Manager
www.addpac.com

System
• Language
• WAN Setup
• System Time
• File Browser

Advanced

Miscellaneous

File Browser

Index of Root/flash/

Name	Size	Type	Last Modified
Parent Directory/		Directory	
secondary/		Directory	1970-Jan-01 09:00:00
tmp/		Directory	2000-Jan-01 09:00:08
apoc.cfg	0.8K	CFG	2019-Apr-09 11:47:37
booter.cfg	0.3K	CFG	2019-Mar-08 11:12:22
booter.cfg~	0.3K		2000-Jan-01 09:00:46
gtr250_g2_v8_51_018.bin	1.9M	BIN	2019-Mar-12 13:37:23

Delete

파일 삭제 | 선택된 파일 삭제 | Upload

Information
AddPac Technology
Model : AP-GTR250_G2
HW Version : 2.0
SW Version : 8.51.018
Smart Web Version : 1.4
Smart Web Build : Mar 6 2019

Description
Back up / Restore the setting of the system software and device

- File Browser
- Directory list
- Change directory
- Upload file
- Download file

Advanced : SNMP Service

Smart Web Manager
www.addpac.com

System +
Advanced -
• SNMP
Miscellaneous +

SNMP

Use SNMP Yes No

Server Port (default 161, between 1 to 65535)

Name	Read	IP	Control
Community	<input type="text"/> <input checked="" type="radio"/> Read-Only <input type="radio"/> Read-Write	<input type="text"/>	Delete Add

Name	Version	IP	Port	Control
Trap	<input type="text"/> <input checked="" type="radio"/> v1 <input type="radio"/> v2c	<input type="text"/>	<input type="text"/>	Delete Add

Apply

Information
AddPac Technology
Model : AP-GTR250_G2
H/W Version : 2.0
S/W Version : 8.51.018
Smart Web Version : 1.4
Smart Web Build : Mar 6 2019

Description
Enable or disable SNMP

©AddPac Technology, all rights reserved.

- SNMP
- Enable / Disable
- Service Port
- Community
- Trap server

Miscellaneous : System Log

Smart Web Manager
www.addpac.com

System Log

```
command logging buffers (messages logged)
-----
Jun  3 15:09:06 vty      Console, show clock
Jun  3 15:08:08 vty      Console, show run
Jun  3 15:08:07 vty      Console, en

event logging buffers (messages logged)
-----
Jun  3 06:07:41 ethernet Interface FastEthernet0/0, changed state to UP
```

Information
AddPac Technology
Model : AP-GTR250_G2
H/W Version : 2.0
S/W Version : 8.51.018
Smart Web Version : 1.4
Smart Web Build : Mar 6 2019

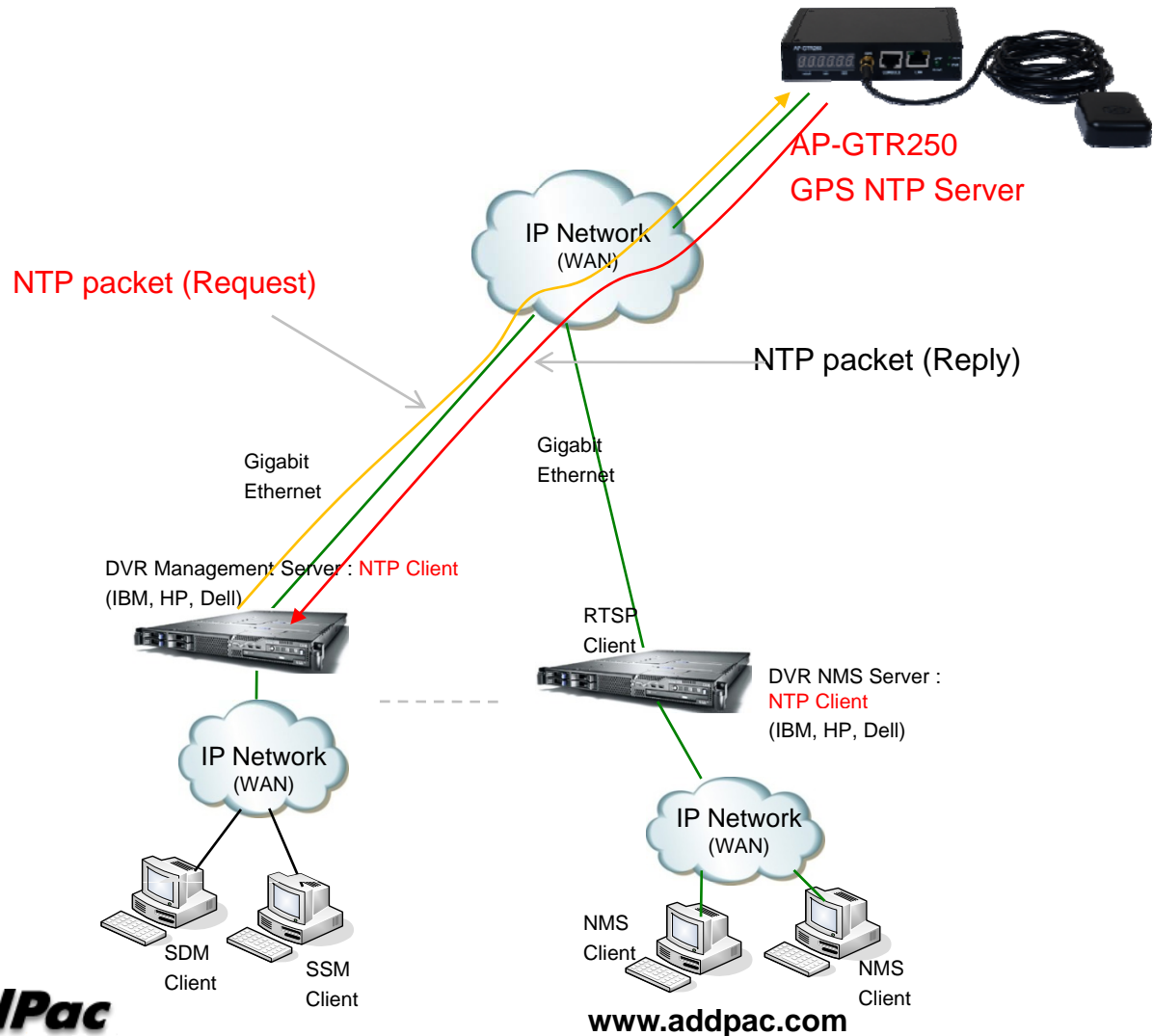
Description
Retrieve the system log

©AddPac Technology. all rights reserved.

Retrieve the system log – command and event log

SNTP (Simple Network Time Protocol)

AP-GTR250 Embedded GPS NTP Server





Thank you!

AddPac Technology Co., Ltd.
Sales and Marketing

Phone +82.2.568.3848 (KOREA)

FAX +82.2.568.3847 (KOREA)

E-mail sales@addpac.com