

AP-LMR3000

LMR(Land-to-Mobile Radio) Gateway

High Performance RoIP (Radio over IP) Solution

SIP Call Manager + PTT Server Service Features



AddPac

AddPac Technology

Sales and Marketing



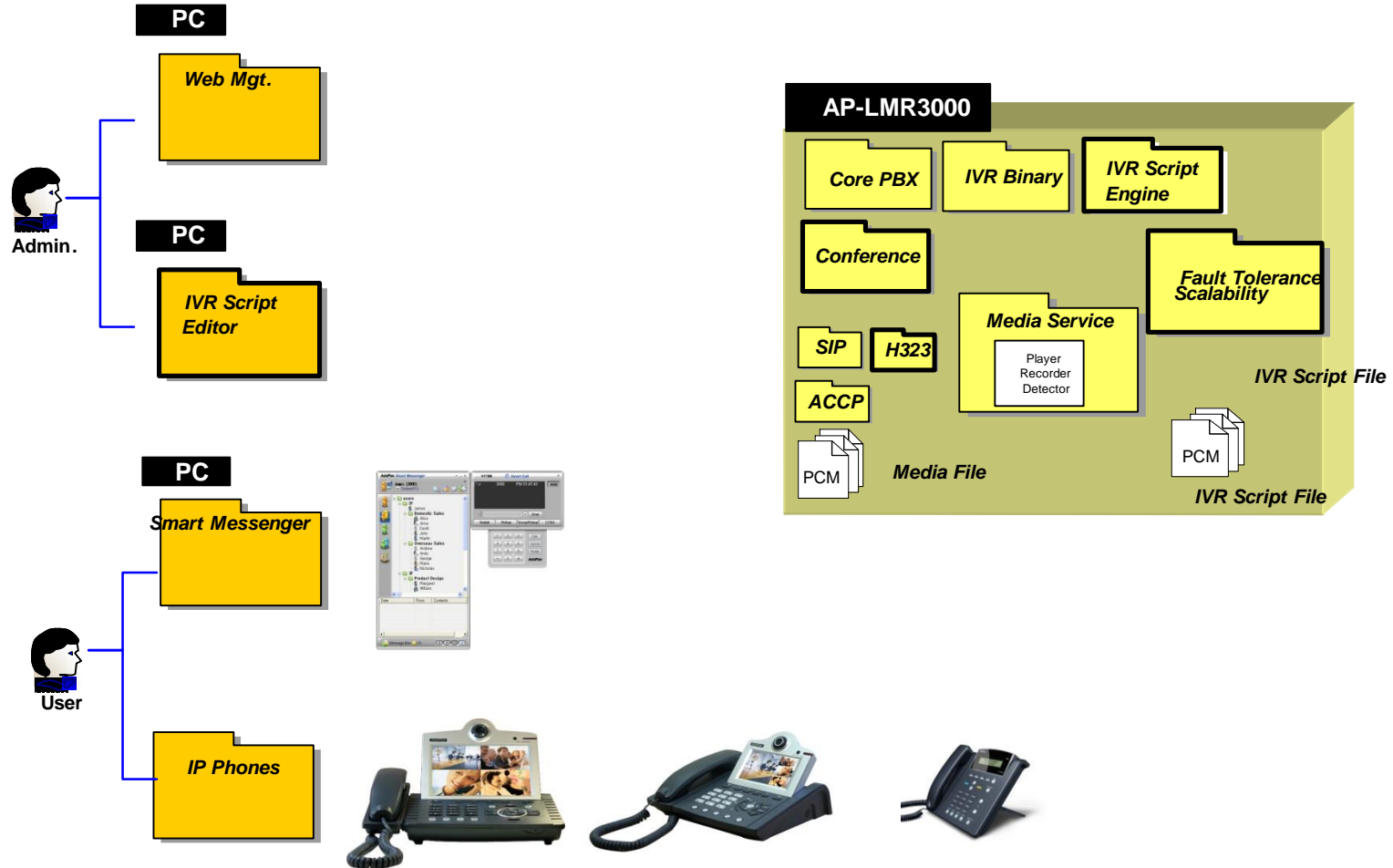
Contents

- Product Overview
- SIP Call Manager Service and Features
- RTP Proxy Service
- User Presence Service
- Network Service and Features
- PTT & RoIP Service
- Network Diagram

Product Overview

- Land to Mobile Radio Gateway Service Support
- Radio over IP Service Support
- Radio Systems(Motorola, etc) are directly Extended to IP Network
- SIP Call Manger Support
- PTT Server Support for 1:N PTT Service
- High Performance RISC & Programmable DSP Architecture
- Two(2) 10/100Mbps Fast Ethernet (IP Share ,etc)
- Two(2) Module Slots for Radio Interface (E&M, Radio2, etc)
- VoIP Codec : G.711/G.726/G.723/G.729, VAD, etc
- Powerful Network Protocols (PPPoE, DHCP, Static Routing, etc)
- SIP/H.323 Dual Concurrent Signaling Protocols
- Firmware Upgradeable Architecture
- Advanced Voice QoS Mechanism
- Powerful Smart Web based Management
- Command Line Interface Support (RS232C Console or Telnet)

IP-PBX Software Components



IP Telephony Service and Features

- **Signaling Server**

- SIP Application Server, Proxy, Registrar and Location Server (RFC3261)
- Multiple ITSP Trunk with SIP & H.323 Accounts Support
 - IP UA Client Role for Registering to ITSP SIP Server
 - H.323 Gatekeeper Client Role for Registering to ITSP H.323 Gatekeeper Server

- **IVR & Auto Attendant**

- Default Auto Attendant Support
- Interactive Voice Response (IVR)
 - Provides with GUI-based Smart IVR Scenario Editor
 - Upload/Download Scenario by Smart IVR Scenario Editor
 - Supports Multiple Concurrent Scenarios
 - Supports Recordable IVR Prompts

- **Voice Mail**

- Support Voice Mail with IVR
- Access from Remote Site via Trunk Support
- Voice Mail Notification Support

IP Telephony Service and Features

- **Number & Call Routing**

- Trunk Hunting by Preference or Sequential
- Call Hunting by Preference, Simultaneous, Random
- Call Hunting by Chained Hunting Group
- Partition for Address Grading
- Call Class for Call Access Control
- Number Translation Rule for Inbound/Outbound Call
- Centrex with Prefix Support
- Multiple Shared Devices with One Number
- Multiple Numbers on One Device
- Individual Call Park within Park Number Pool
- Group Call Park within a Group or Other Group
- Call Pickup of Ringing Call of Same Group or Other Group
- Call Pickup of Parked Call
- Call Transfer - Blind, Consult
- Call Forwarding - Unconditional, Busy, No Answer, Voice Mail
- Call Waiting
- Call Swaping
- Call Hold

IP Telephony Service and Features

• IP-PBX Advanced Features with AddPac IP Phones

- Multiple Call Handling with Call Status and Calling Line Number and Name
- Plug and Play with Auto Discovery Function
- Softkey Map Download and Control
- Time and Date Setting
- Voice Mail List View
- Parked Call List View
- Call Forward Setting
- Recent Call List View
- Calling Number and Name Identification
- Individual Call Park within Park Number Pool by Softkey
- Group Call Park within a Group or Other Group by Softkey
- Call Pickup of Ringing Call of Same Group or Other Group by Softkey
- Call Pickup of Parked Call by Softkey
- Call Transfer - Blind, Consult by Softkey
- Call Waiting Indication
- Call Swaping by Softkey
- Call Hold by SoftKey
- Conference Control

IP Telephony Service and Features

- **User & Device Management**

- LDAP (Light weight Directory Access Protocol) Support
 - Supports Hierarchical Organization
- Auto Discovery of IP Phones & Video Phones
- Monitoring Status of Phones

- **Miscellaneous***

- Distinctive Ring by Calling User
- Auto Config & Upgrade
- Personal Directory
- Downloadable Ring
- Do not Disturb

IP Telephony Service and Features

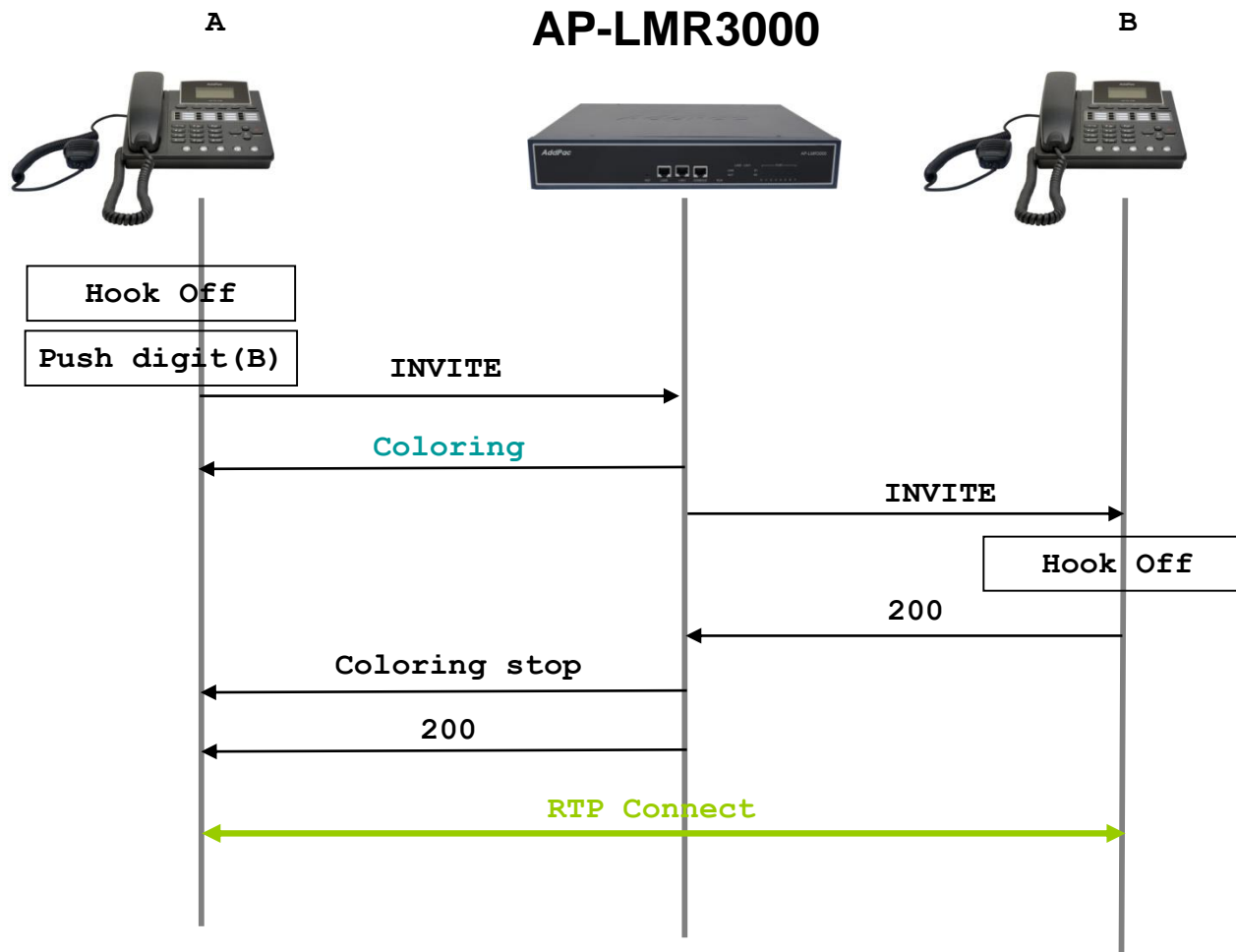
- **Conference**

- G.711 (4-party Conference, 2 session) : Basic
- G.711/G.729/G.723 (4-party Conference, 2session) Internal MCU Module : Option
- Ad-hoc Conference
- Dial-Out Conference
- Meet-me Conference
- Multiple External MCU support(Video, Audio, etc) : AddPac AP-MC1000, etc
- Conference Chair and Participants Management

- **Music & Announcement**

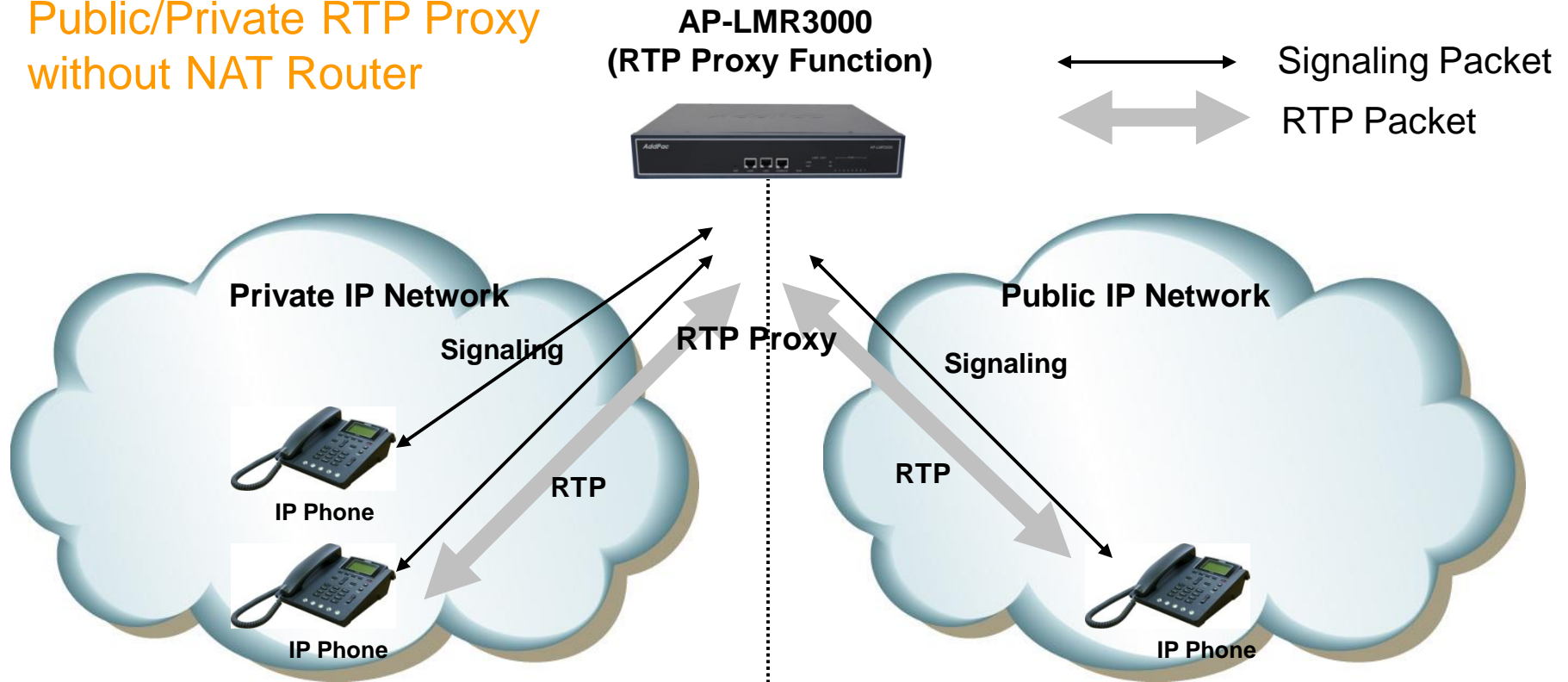
- Music on Hold
- Replaceable Announcements
- Dialing Music / Tone Service

SIP based Basic Call Scenario



RTP Proxy Service

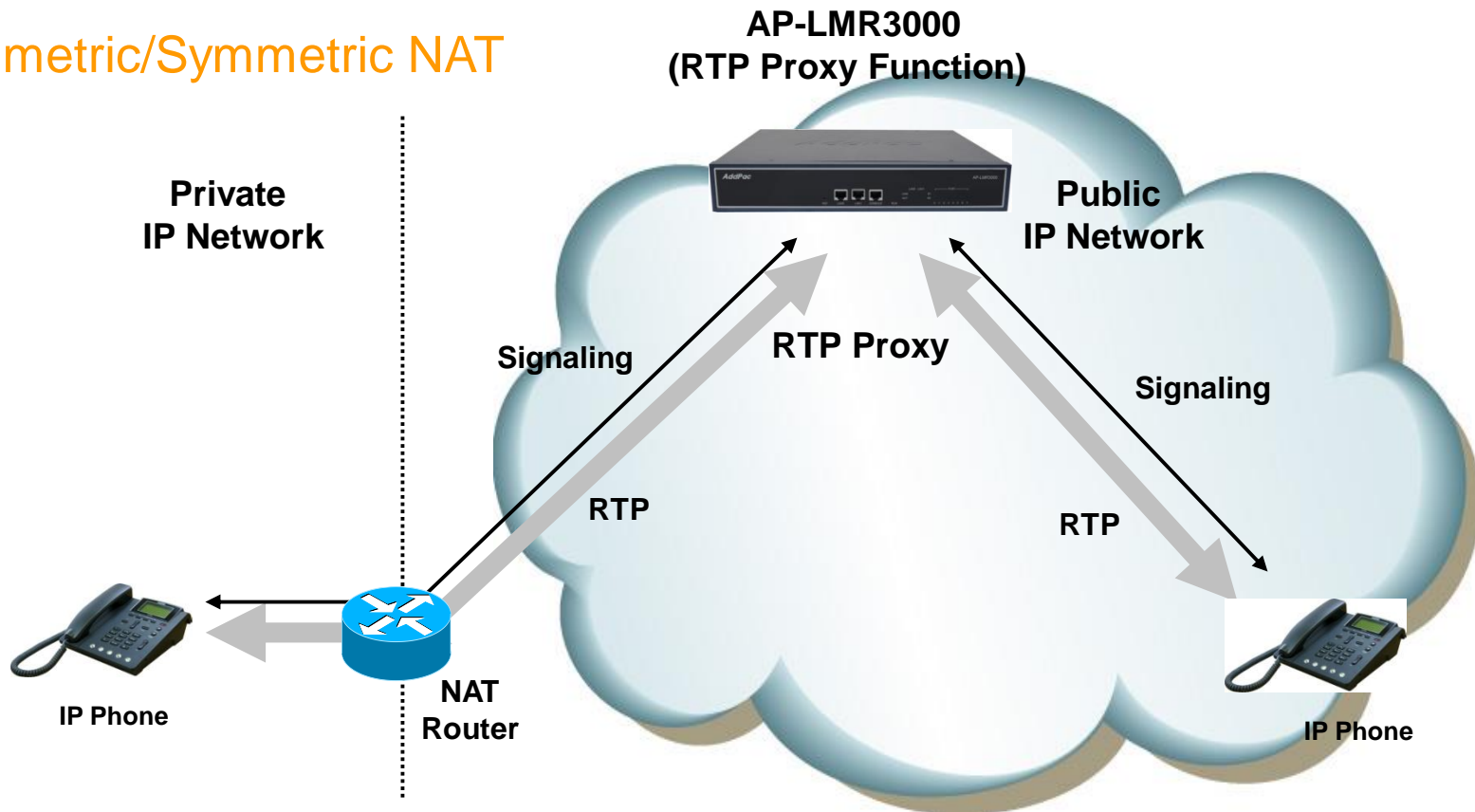
Public/Private RTP Proxy without NAT Router



- Located between public and private network
- AP-LMR3000(Call manager + RTP proxy) has public and private address
- AP-LMR3000 determine that the call is internal or external

RTP Proxy Service

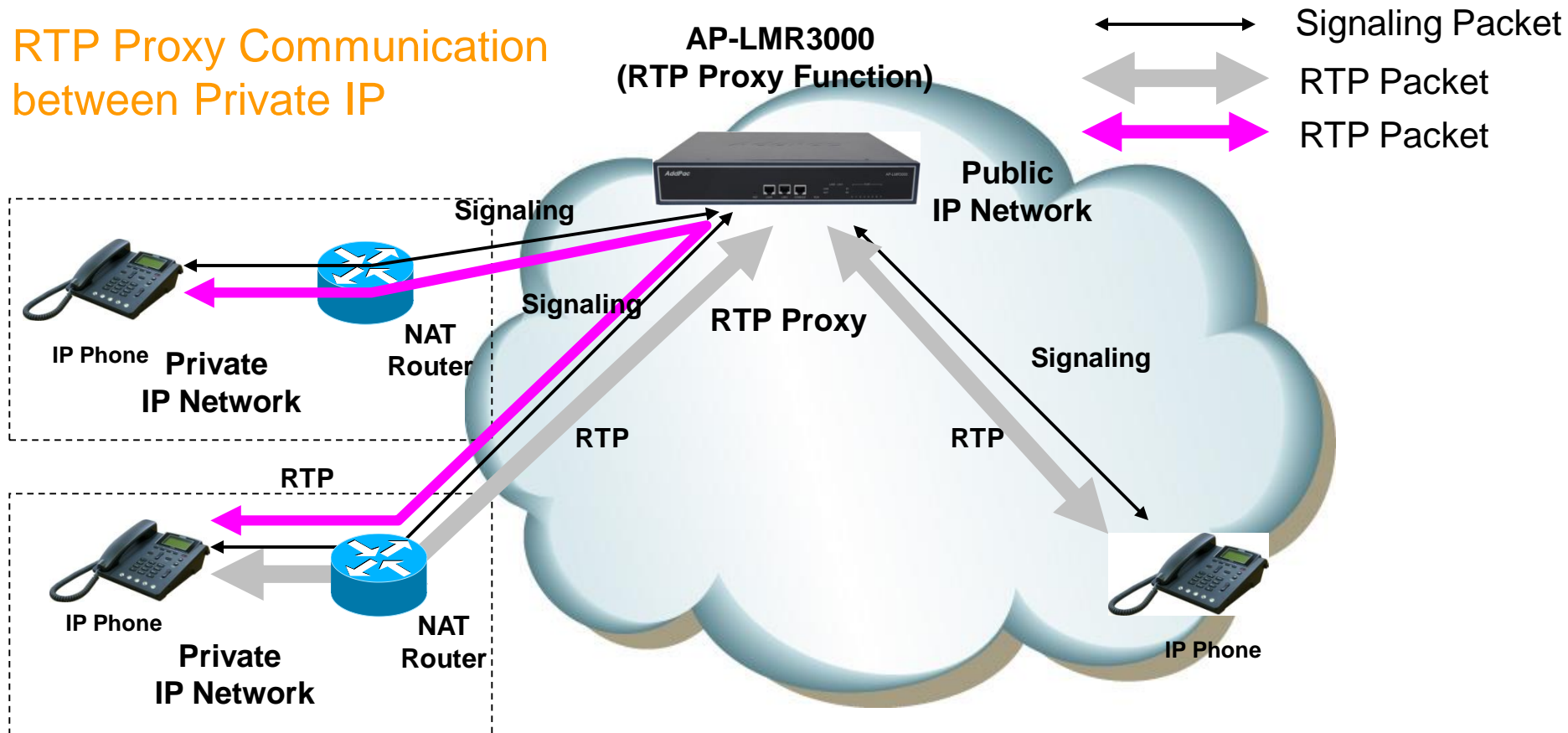
Asymmetric/Symmetric NAT



- Located in public network
- RTP Proxy has single public address
- Auto detect for asymmetric NAT via incoming RTP packet

RTP Proxy Service

RTP Proxy Communication between Private IP



- Located in public network
- RTP Proxy has single public address
- Auto detect for asymmetric NAT via incoming RTP packet

RTP Proxy Service

IPv4/IPv6 RTP Proxy

AP-LMR3000
(RTP Proxy Function)



IPv4 Network

Signaling

RTP



IP Phone

RTP Proxy

IPv6 Network

Signaling

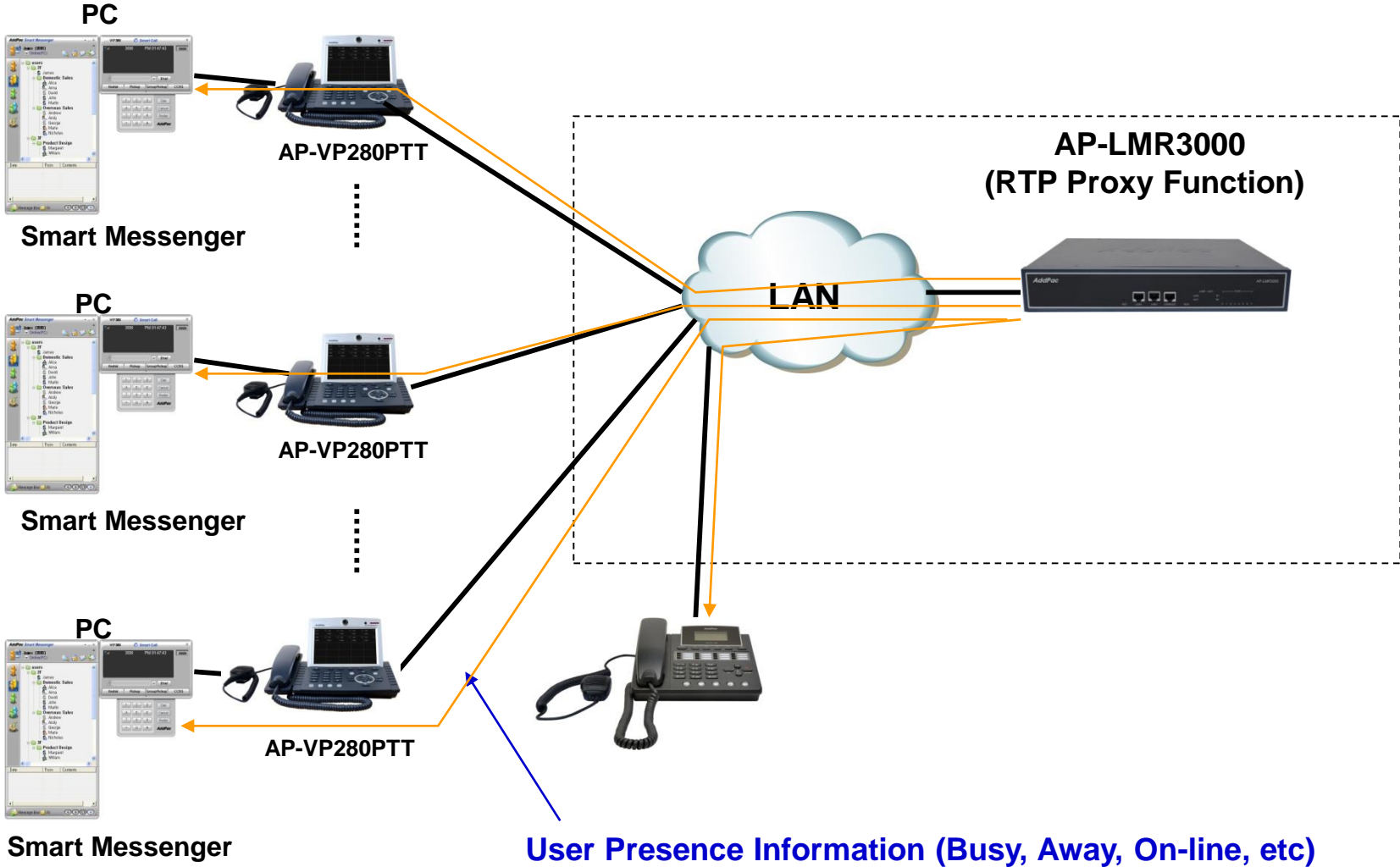
RTP



IP Phone

- AP-LMR3000 (Call manager + RTP proxy) has IPv4 and IPv6 address

User Presence Service for UC



Network Service and Features

Basic Network Protocols

- ARP, IP, IPv6, TCP, UDP, ICMP, ICMPv6, SCTP, IGMP, MLD

Routing Protocol

- IPv4 : Static
- IPv6 : Static

Service Protocol

- FTP, Telnet, TFTP, DHCP Server/Relay, SNMP Server
- CDP (Cisco Discovery Protocol)
- DNS Resolver , DDNS(nsupdate)
- Bridge
- Syslog
- IP/IPv6 policy control (QoS)
- VPDN (Virtual Private Dial-up Network : L2TP Server)

Network Service and Features

IPv4/IPv6 Interworking

- NAT/PAT for IPv4
- IP connect (formerly ip-share) and device cascade for IPv4
- IP/IP, IP/GRE tunneling
- NAT-PT
- 6to4, Autoconfig tunneling

IPv4 Address Configuration

- Fixed (Static)
- DHCP
- PPPoE

IPv6 Address Configuration

- Fixed (Static)
- EUI-64
- Autoconfig (Neighbor Advertisement and Solicitation)

Network Service and Features

Miscellaneous

- Cisco Style CLI
- Standard & Extended IPv4/IPv6 Access List
- Multi-level User Account Management
- IP accounting
- fsh (Embedded file system shell)
- STUN Client

Network Service and Features

SNMP MIBs

- MIB-II
- RMON MIBs (Statistics, History, Alarm, Hosts Group)
- RFC2465 Management Information Base for IP Version 6: Textual Conventions and General Group
- RFC2466 Management Information Base for IP Version 6: ICMPv6 Group
- RFC2452 IP Version 6 Management Information Base for the Transmission Control Protocol
- RFC2454 IP Version 6 Management Information Base for the User Datagram Protocol
- AddPac Enterprise MIBs
- etc

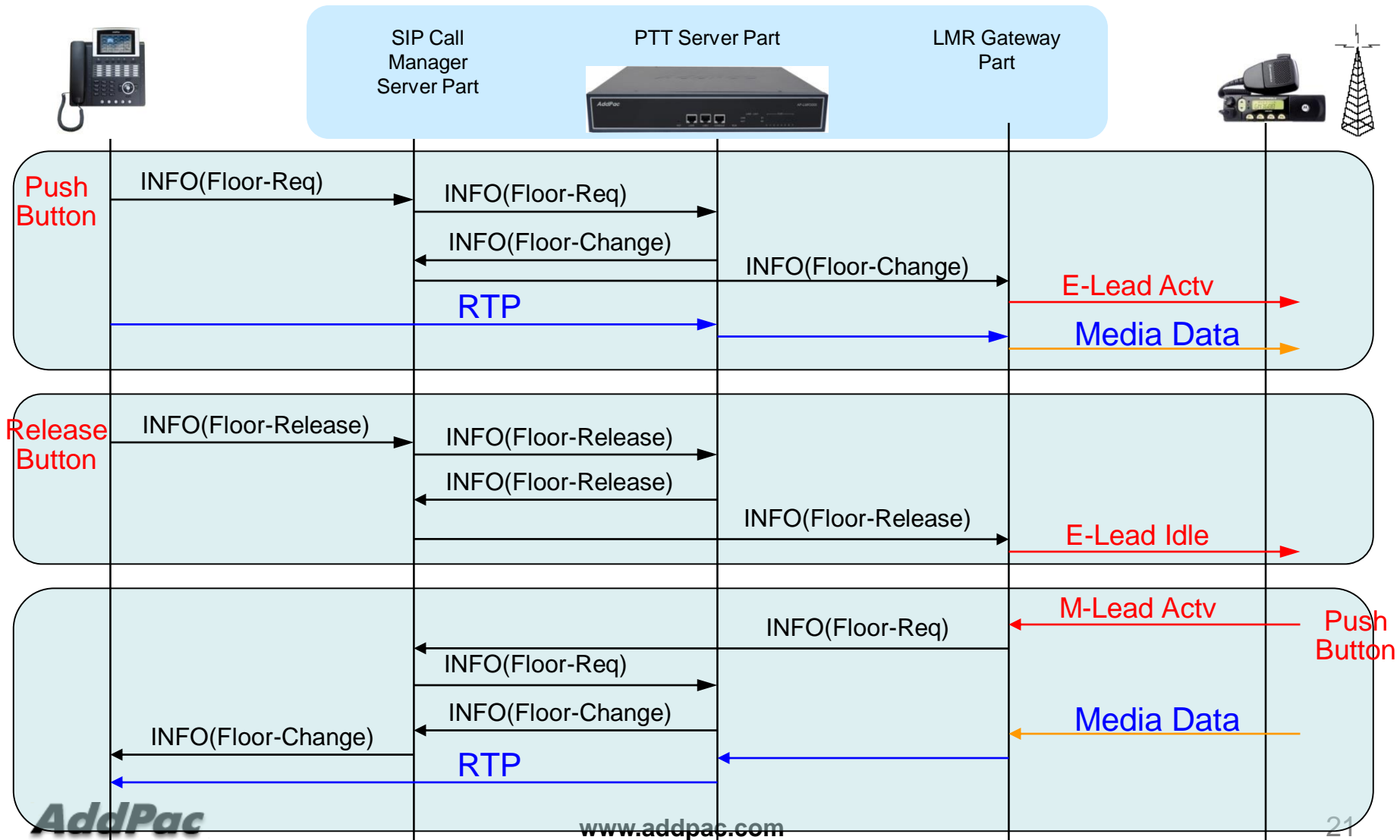
PTT Service

- IP based PTT Service Support
- Dial-Out based PTT Service Support
 - Multi-Session, Multi-Group
 - PtP (Point-to-Point) Service
- Advanced PTT Server Features
 - 1:1 PTT
 - Group PTT
 - Emergency PTT with Alarm Notification
- Emergency PTT Service Support
- IP-PBX Interworking Service
- IP Terminal Interworking Service (Wi-Fi Phone, IP Phones, Soft Phone, Smart Phone Application)
- PTT Solution with Outstanding Network Service Capability

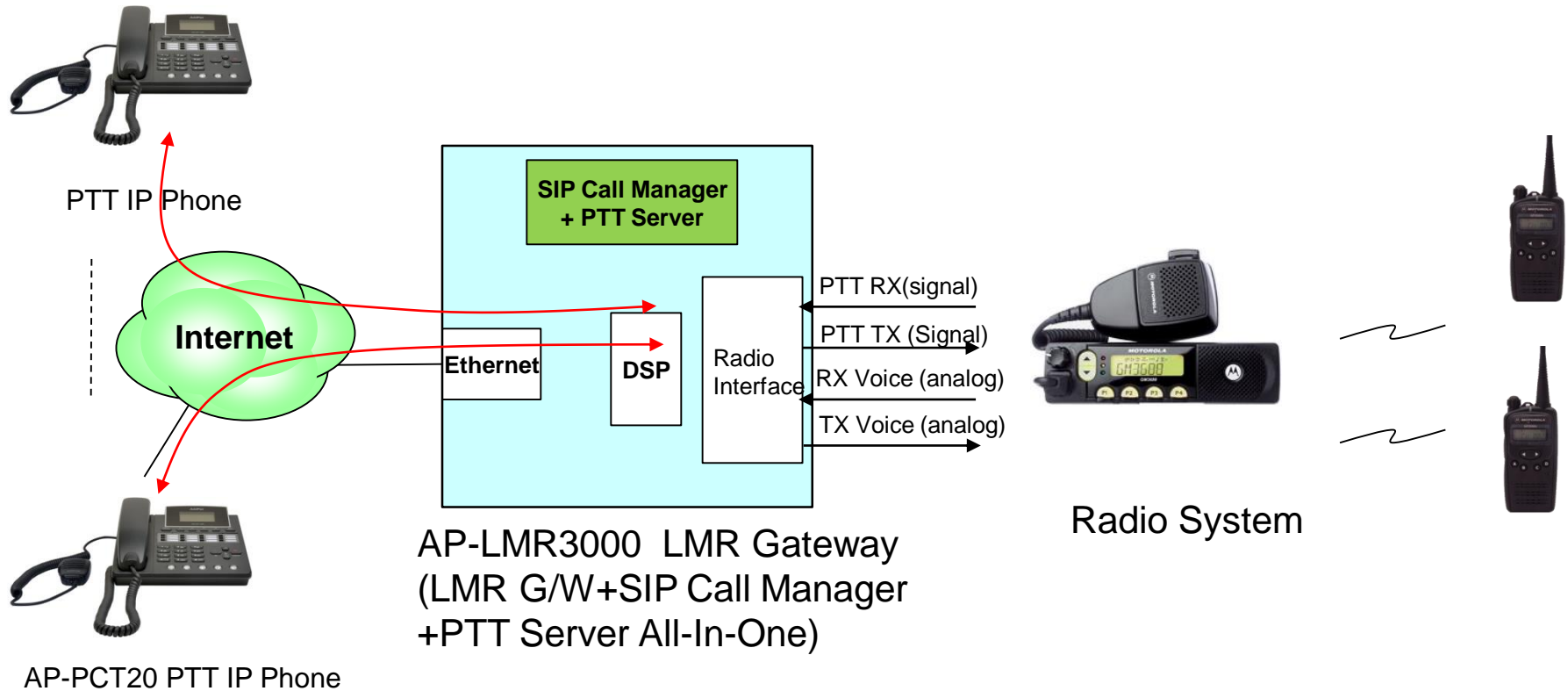
RoIP System Message Flow

(SIP Call Manager + PTT Server Integrated Server Model)

SIP Message Flow (Floor Control : Push To Talk)



Network Diagram



Thank you!

AddPac Technology Co., Ltd.
Sales and Marketing

Phone +82.2.568.3848 (KOREA)

FAX +82.2.568.3847 (KOREA)

E-mail sales@addpac.com