

# AP-NC1000 Network Camera

High-performance Network Surveillance Solution



**AddPac**

**AddPac Technology**

Sales and Marketing

# AP-NC1000 Network Camera

- Product Overview
- Benefits and Features
- Hardware Specification
- Software Service
- Video Service & Features
- Audio & Voice Service and Features
- Network Service and Features
- Application Area
- Ordering Information



# Product Overview

## AP-NC1000 Network Camera

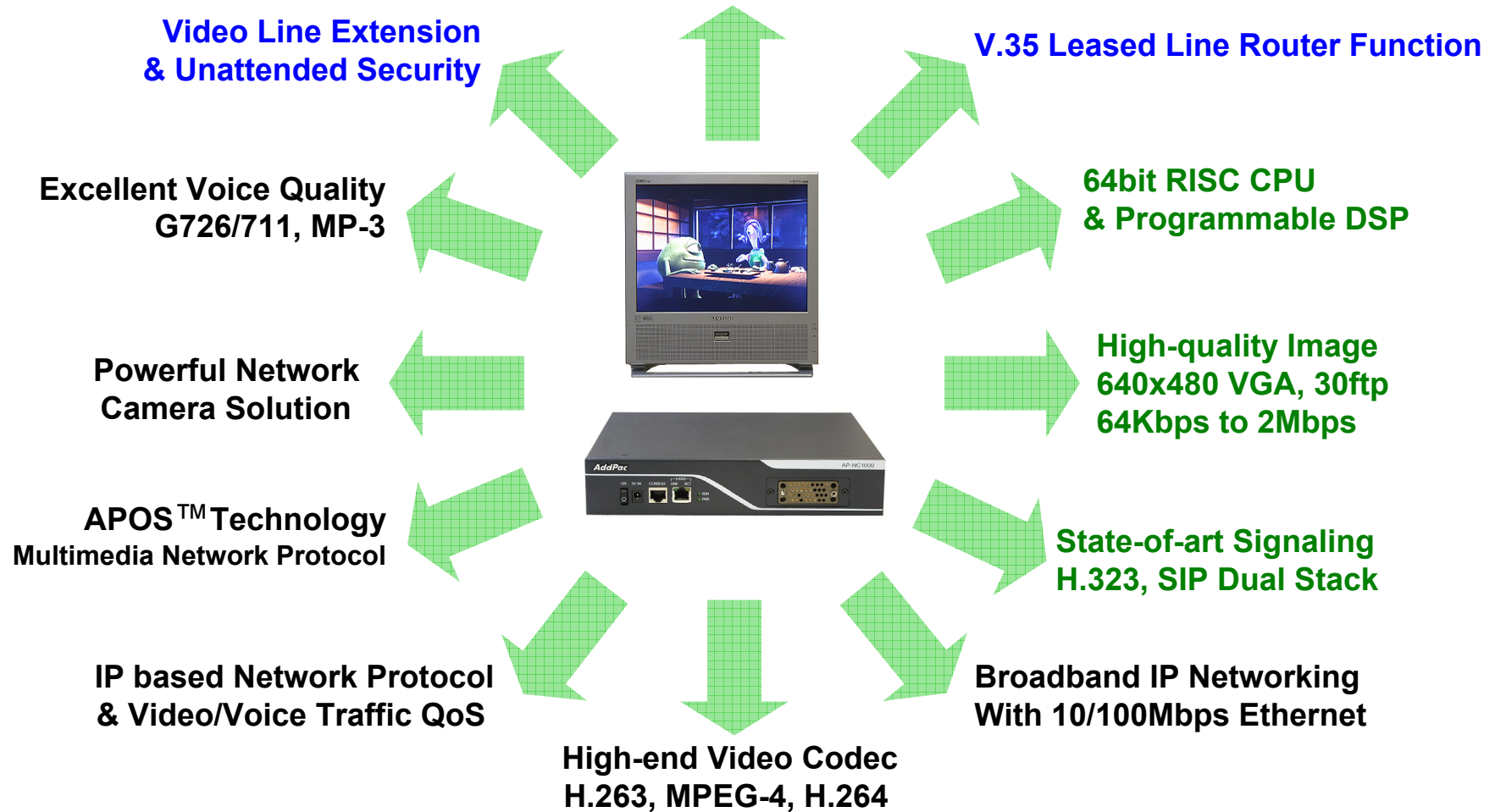
- IP based Audio/Video Encoding/Decoding Solution
- IP based Network Surveillance Solution
- Optional V.35 Leased Line Routing Function
- High-performance Video, Audio, and Voice Service
- Firmware Upgradeable Architecture
- Video Solution with Outstanding Network Service Capability
- Audio/Video Privacy Protection



# Product Highlights

## AP-NC1000 Network Camera

### IP based Network Surveillance



# Benefits and Features

## AP-NC1000 Network Camera

- **High Quality Images up to 64kbps and 2Mbps**
- **High-performance Audio & Video Codec Support**
  - H.263, MPEG-4, and H.264 Video Codec
  - Line IN/OUT : G.726, G.711, MP3 Audio Codec
- **Up to 30 frame/sec, 640 x 480(VGA) Resolution**
- **Voice over IP Signaling Protocol for Voice over IP Service**
  - H.323, SIP Multiple Stack Support
- **IP based Network Protocol Support**
- **Video Application**
  - Network Surveillance Solution
  - Video Line Extension Solution

# Hardware Specification

## AP-NC1000 Network Camera

PowerPC  
CPU

High-end  
DSP

- **High Performance RISC Microprocessor Computing Power**
- **Built-in High-end Programmable DSP Hardware Architecture**
- **Main Chassis**
  - **Network Interface**
    - One(1) 10/100Mbps Fast Ethernet
    - One(1) V.35 Interface (optional)
    - One(1) RS-232C Console (RJ45)



# Hardware Specification

## AP-NC1000 Network Camera

PowerPC  
CPU

High-end  
DSP

- **Video Module (AP-AV2000N)**
  - Powerful Video Interface
    - RCA (or BNC) Video Input
  - High quality Audio and Voice Interface
    - Stereo 3.5mm Audio Input Connector
  - Network Interface
    - One(1) RS-232C/RS422 Interface(DB-9) for Camera Control
- **Video Module (AP-AV2000N)**
  - Powerful Video Interface
    - RCA (or BNC) Video Input
  - High quality Audio and Voice Interface
    - Stereo 3.5mm Audio Input Connector
  - Network Interface
    - One(1) RS-232C/RS422 Interface(DB-9) for Camera Control
- **Video Module (AP-AV2200N)**
  - Powerful Video Interface
    - RCA (or BNC) Video Input/Output
  - High quality Audio and Voice Interface
    - Stereo 3.5mm Audio Input/Output Connector
  - Network Interface
    - One(1) RS-232C/RS422 Interface(DB-9) for Camera Control
  - I/O Interface
    - 3 Alarm Input, 1 Relay Output

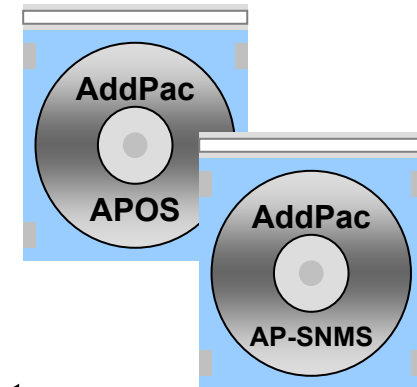




# Software Service

## AP-NC1000 Network Camera

- **Built-in AddPac APOS Internetworking Software**
  - Scalability, Functionality, and Stability Features
  - Video Traffic QoS Control
- **Programmable Video, Audio, and Voice Services**
  - Video Codes, Audio, and Voice Codec
- **Firmware Upgradeable DSP Architecture**
- **Network Camera Function Support**
- **Industry Standard IP based Network Protocol Features**
- **AP-SNMS (Smart Network Camera Management Software) Solution**
  - Server and Client Architecture
  - Network Surveillance & Monitoring, Viewer Control, Storage Management, Login Management, and Remote System Management Support
  - Intel Pentium Machine with MS Window Server OS and MS-SQL





# Video Service and Features

## AP-NC1000 Network Camera

- **Various Video Networking Interface**
  - Composite (RCA or BNC)
- **High-performance Video Codec Support**
  - H.263, MPEG-4, and H.264
- **Powerful Image Resolution Support**
  - QCIF(176x144), CIF(352x288), QVGA(320x240), and VGA(640x480)
- **Up to 30fps at 1Mbps with VGA-Resolution(MPEG-4)**
- **Dual Bit-Stream Support**
  - High Resolution/Low Frame-Rate for Storage
  - Low Resolution/High Frame-Rate for Real-time Display
  - Additional Intelligent Feature
- **64Kbps to 2Mbps Operating Video Traffic Bandwidth**
- **Rate Control for Video Traffic QoS**
  - Ensuring Optimized Quality
  - Frame Rate with Limited Bandwidth
- **High-end Error Resilient Against Various Packet Error**

# Audio & Voice Service and Features

## AP-NC1000 Network Camera

- **Audio & Voice Networking Interface**
  - Audio Input/Output Port (2 x 3.5mm Stereo Female Connector)
- **VoIP based Signaling Protocol Support**
  - H.323, SIP Multiple Signaling Protocol Stack
  - H.323 Gateway, Gatekeeper Support
- **High-performance Audio & Voice Codec Support**
  - Line IN/OUT : G.726, G.711, MP-3 Audio Codec
- **Enhanced QoS Management Features for Voice Traffics**

# Network Service and Features

## AP-NC1000 Network Camera

- **Network Managements**
  - Standard SNMP Agent (MIB v2) Support
  - Remote Management using Console, Telnet
  - Web based Management using HTTP Server Interface
- **Security Functions**
  - Standard & Extended IP Access List
  - Enable/Disable for Specific Network Protocols
  - Multi-level User Account Management
  - Auto-disconnect for Telnet/Console Sessions
  - PPP User Authentication Supports (PAP & CHAP)
- **Operation & Managements**
  - System Performance Analysis for Process, CPU, Connection Interface
  - Debugging, System Auditing, and Diagnostics Support
  - System Booting and Auto-rebooting with Watchdog Feature
  - System Managements with Data Logging
  - IP Traffic Statistics with Accounting

# Network Service and Features

## AP-NC1000 Network Camera

- **Network Managements**
  - DHCP Server & Relay Functions
  - Network Address Translation (NAT) Function
  - Port Address Translation (PAT) Function
  - Transparent Bridging (IEEE Standard) Function
    - Spanning Tree Bridging Protocol Support
    - Remote Bridging Support
    - Concurrent Routing and Bridging Support
  - Cisco Style Command Line Interface (CLI)
  - Network time Protocol (NTP) Support

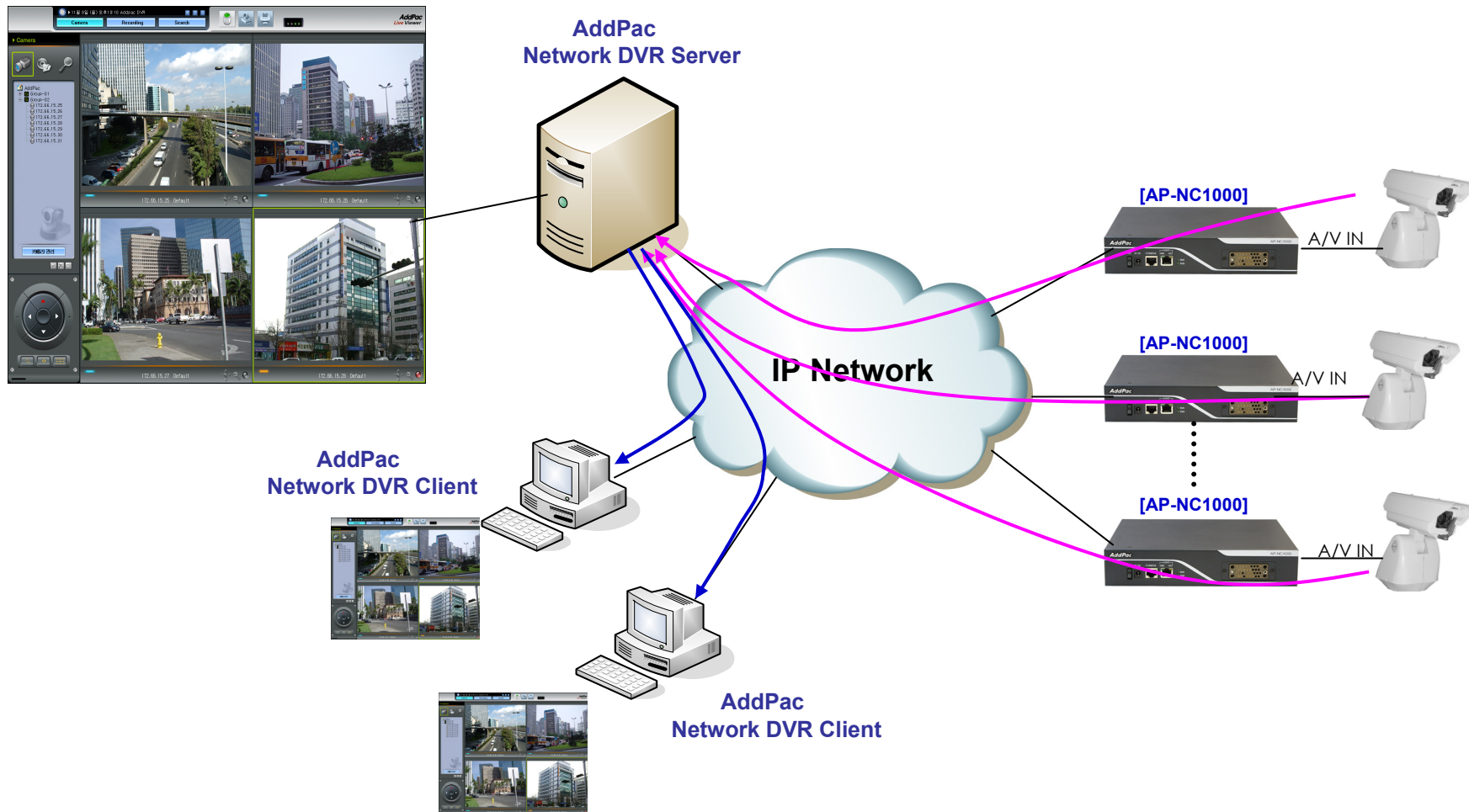
# AP-NC1000 Network Camera

## Application Area

- Network Surveillance
- Video Line Extension
- Video Line Extension(V.35 Leased Line Router)
- IP Audio Broadcasting + Network Surveillance

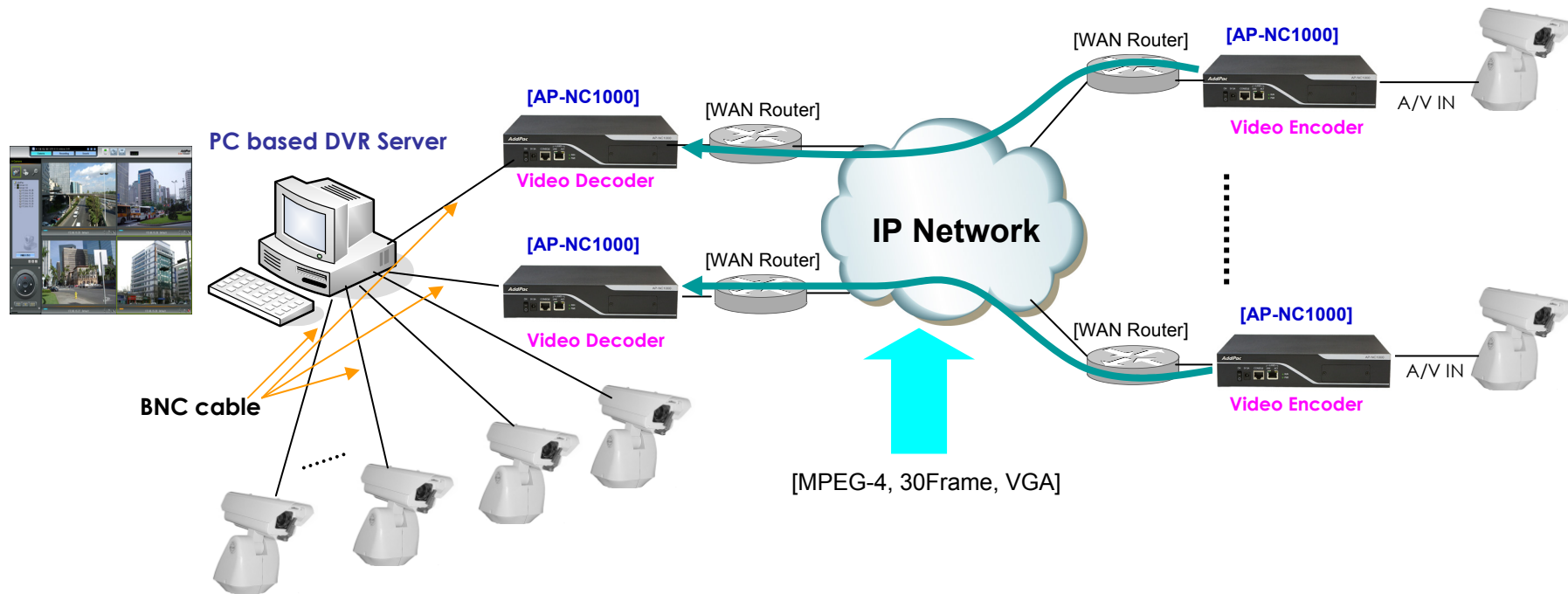
# Network Surveillance

## AP-NC1000 Network Camera



# Video Line Extension

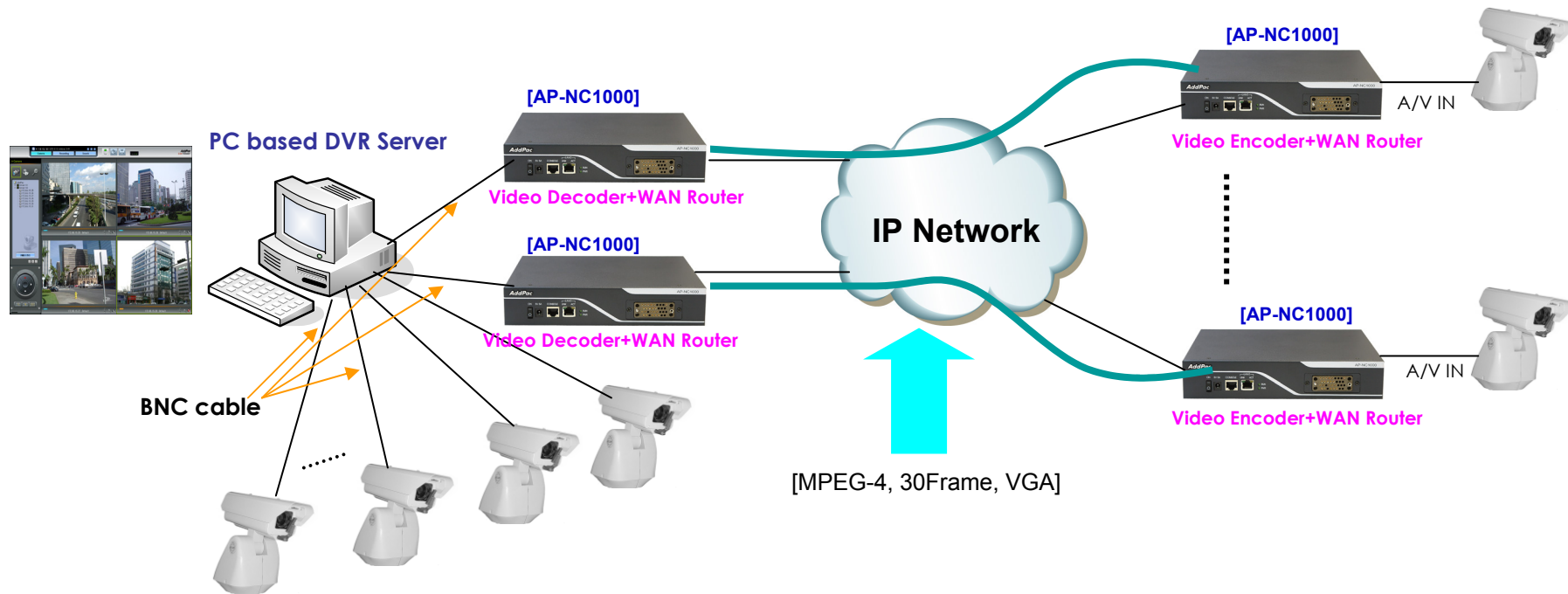
## AP-NC1000 Network Camera





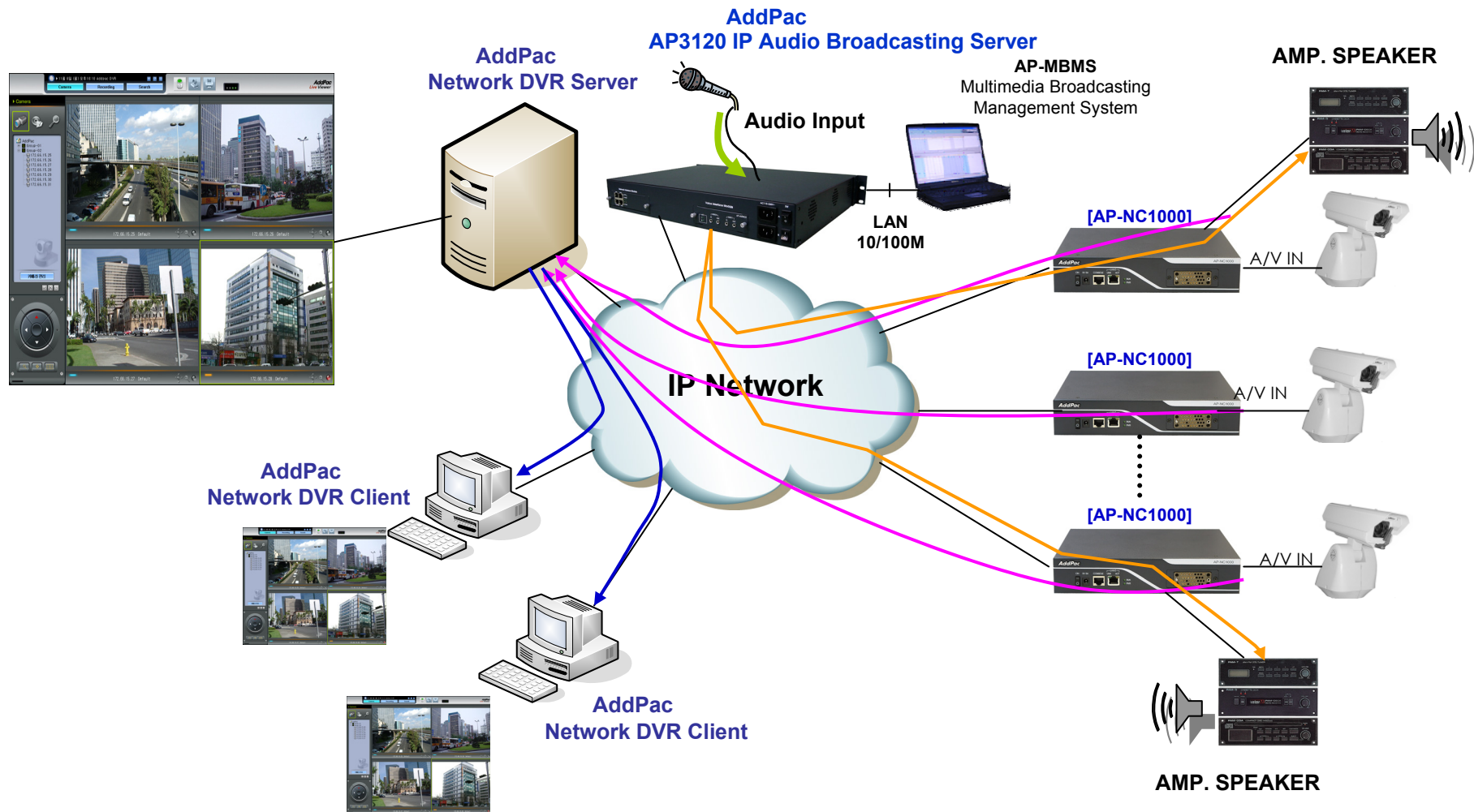
# Video Line Extension

AP-NC1000 Network Camera(V.35 WAN Router)



# IP Audio Broadcasting + Network Surveillance

## AP-NC1000 Network Camera



# Ordering Information

- **AP-NC1000 Network Camera Hardware**
  - AP-NC1000 Network Camera Main Body
  - High-performance RISC CPU with Programmable DSP Architecture
  - 1-port 10/100Mbps Fast Ethernet and 1-port RS-232C Console
  - Optional V.35 Interface
  - Including Network Cable Set & Ext. Power Supply, etc.
  - Optional Video Modules
- **Built-in APOS Internetworking Software for AP-NC1000**
- **Including 1 Year Hardware Warranty**
- **Product Documents**
  - Install and Operation Guide (PDF)
- **Pricing**
  - AddPac Technology Regional Sales Manager
  - Authorized Sales and Marketing Representatives
  - Please Contact [www.addpac.com](http://www.addpac.com)

# AP-NC1000 Network Camera

**Thank you!**

**AddPac Technology Co., Ltd.**  
Sales and Marketing

Phone +82.2.568.3848 (KOREA)

FAX +82.2.568.3847 (KOREA)

E-mail [sales@addpac.com](mailto:sales@addpac.com)