



AddPac AP2300 Intelligent Layer2 Switch

AP2300 Intelligent Switch is a solid foundation for next generation IP telephony and wireless LAN communication.

Product Highlights

PoE (Power of Ethernet)

Supporting IEEE802.3af PoE standard, providing -48V VDC power to IP phones, wireless LAN access points

Enhanced Security

Blocking unauthorized access and offering multi-level user access management

Auto-QoS for Applications such as IP phones

Automatic QoS feature monitors IP phones and IP video phones and realizes optimum traffic queuing for these time-sensitive applications

Java based Easy Management

Java based "Smart Manager" offers easy & quick management via web-browser

Key Features

- 24-port 10/100Base-T Interface
- Optional 2-port 100Base-FX, 1000Base-X GBIC Uplink Interface Module
- High Performance RISC CPU
- IEEE802.3af PoE Standard Supports
- Automatic QoS for Real-Time IP Communication
- Web/Java based Smart Manager
- 802.1p CoS
- Transmission Queue Management, WRR
- Link Aggregation to Prevent Service Termination due to a Single Line Failure
- 19" Inch Rack Mountable

Business Networks adapt to changing network requirements by adding new equipments such as IP phones and wireless access points. However, it requires, in return, in-depth consideration on the edge network, not only the core to spare additional investment due to the insufficient capacity of edge level in spite of the ample backbone network resources.

AP2300 Intelligent Ethernet Switch features the IEEE802.3af standard PoE (Power over Ethernet) capability. It provides 48V DC power to IP phones and wireless LAN access points using external AP-PW48 power module. AP-PW48 power module supplies 15W power over standard Category 5 unshielded twisted-pair (UTP) cable to the edge applications such as IP phones and wireless access points without wall power. When AP-PW48 power module is interfacing with UPS (Uninterruptible Power Supply), the users enjoy continuous IP telephony service during the power failure.

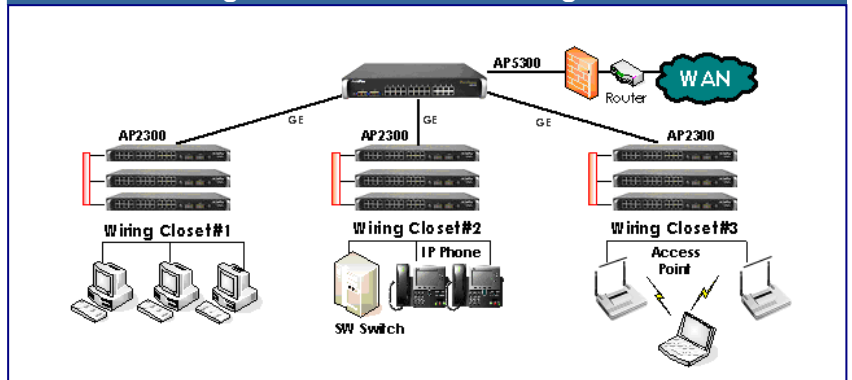
AP2300 prioritizes time-sensitive traffic such as IP telephony and video and offers bandwidth control to all the related interfaces. Moreover, its advanced RED (Random Early Detection) mechanism ensures optimized transmission queue on interfaces reducing the chance of network congestion significantly. Especially, it offers automatic QoS feature which realizes optimum traffic queuing by monitoring IP phones and IP video phones to ensure maximum performance of these equipment. AddPac will shortly introduce the advanced IP phone and IP videophone models in the future.

Blocking unauthorized users and delicately managing permitted users are the security features of AP2300 LAN switch.

Moreover, AP2300 Ethernet Switch is equipped with comprehensive management tools of Console and Java based Smart Manager. Its built-in Java based Smart Manager realizes easy and quick deployment of equipment without relying on complicated CLI interface from anywhere by accessing Internet.

Last but not least, AP2300's dual 100Base-FX Ethernet interfaces support uplink stacking, thus realizes flexible port augmentation.

AP2300 Intelligent Switch Network Configuration



For more Information
www.addpac.com/ap2300
TEL: +82-2-568-3848