

# AP1501 1-Port V.35 Leased-Line Router

Next Generation V.35 Leased Line Routing Solution

1-Port V.35 1-Port Fast Ethernet Router



**AddPac**

**AddPac Technology**

Sales and Marketing

[www.addpac.com](http://www.addpac.com)

# Contents

- Product Overview
- Product Highlights
- Hardware Specification
- Software Service
- Network Service and Features
- Application Area
- Ordering Information

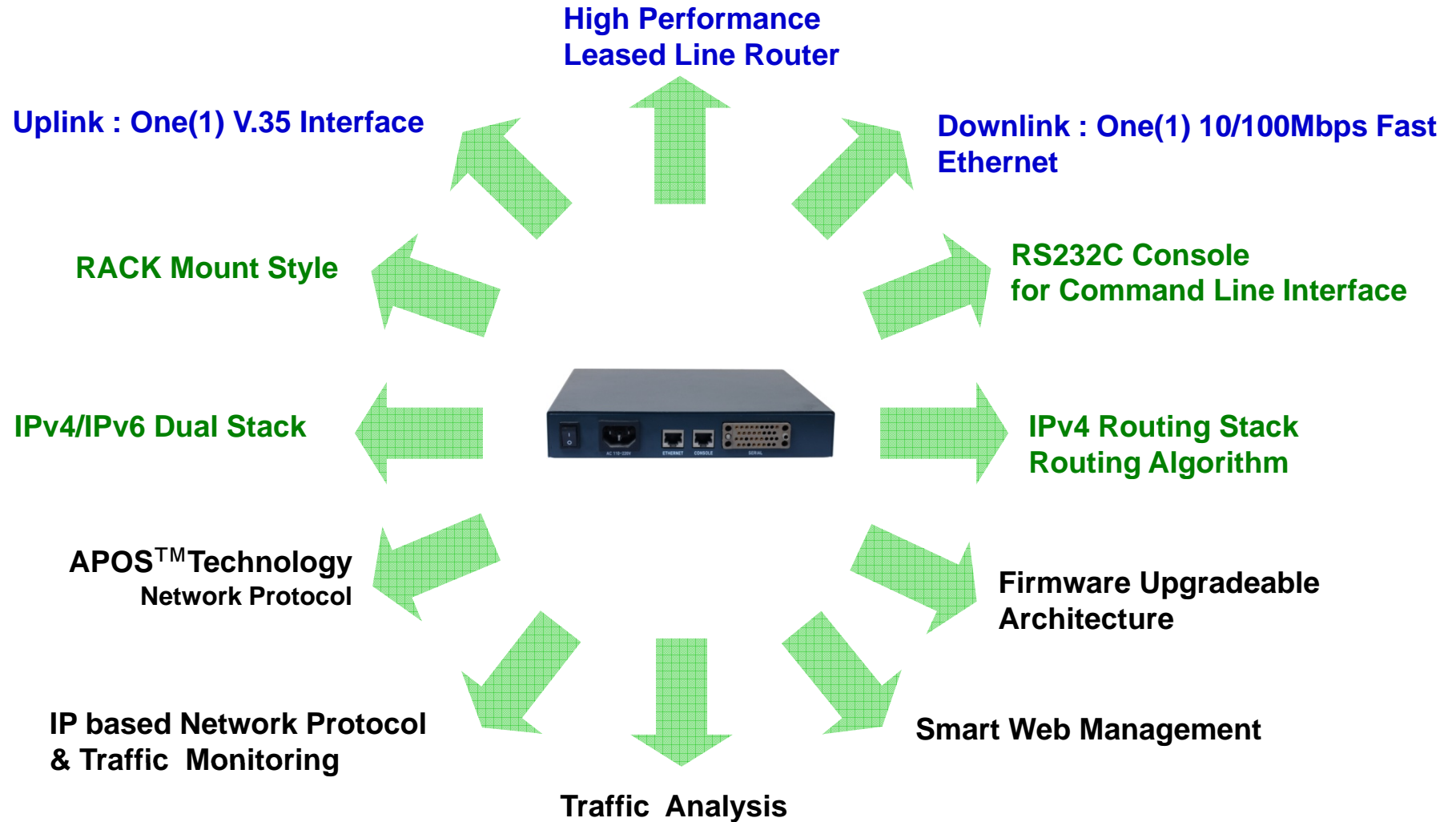
# Product Overview

## AP1501 1-Port V.35 Leased-Line Router

- Embedded Hardware System and Real-Time OS
- V.35-to-LAN Routing Support
- Overload Control Support
- Support Various Network Protocols
- Uplink : One(1) V.35 Interface, Downlink : One(1) Fast Ethernet
- Powerful Management and User Friendly Features
- CLI Interface for Detailed Control
- Smart Web Management
- Firmware Upgradeable Architecture

# Product Highlights

AP1501 1-Port V.35 Leased-Line Router



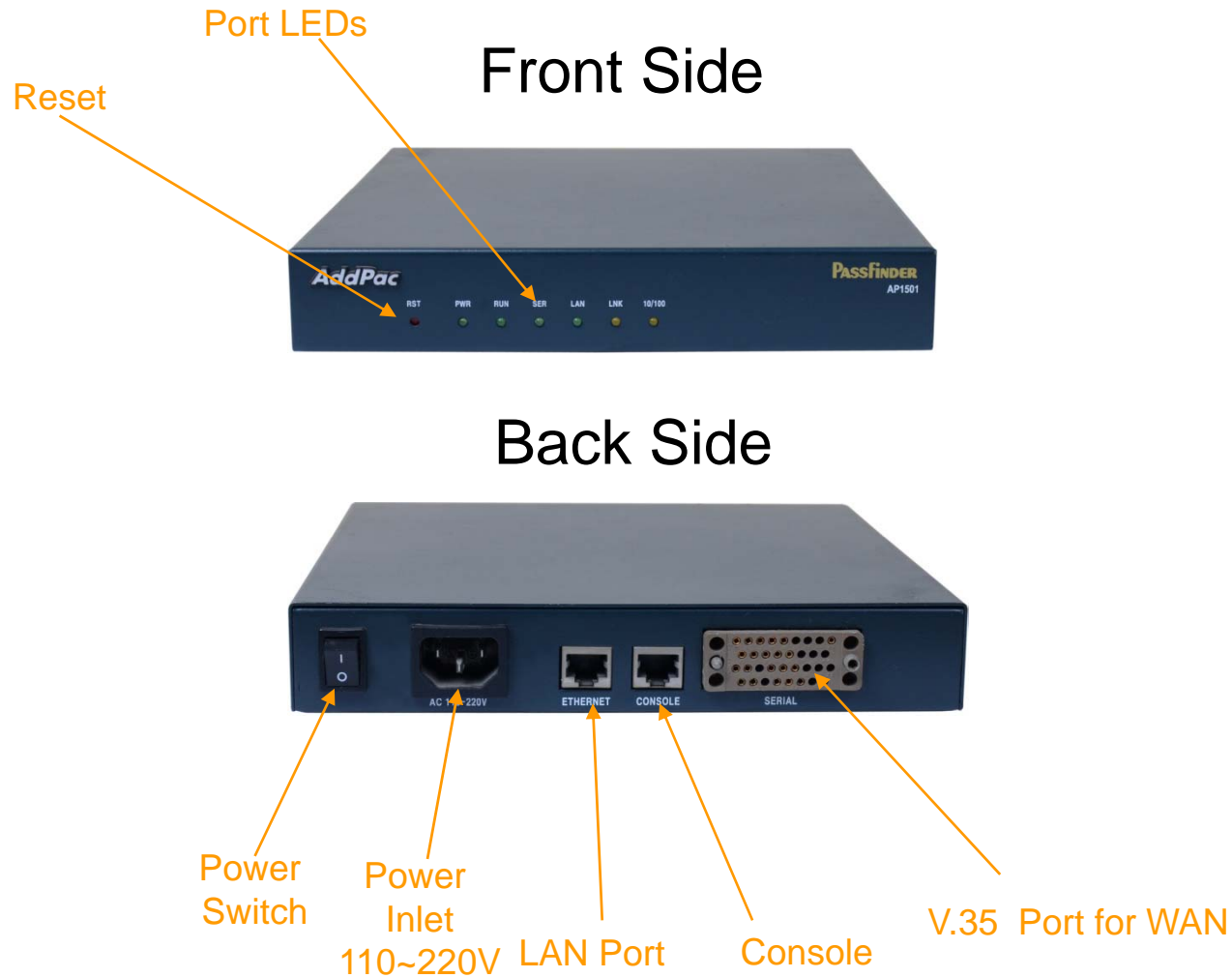
# Hardware Specification

## AP1501 1-Port V.35 Leased-Line Router

- High-End RISC Microprocessor Computing Power
- Main Chassis
  - Network Interface
    - Uplink : One(1) V.35 Interface
    - Downlink : One(1) 10/100Mbps Fast Ethernet
    - One(1) RS-232C Console (RJ45)

# Hardware Specification

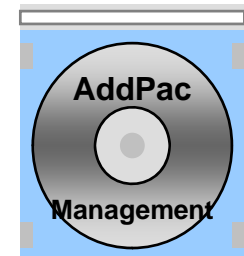
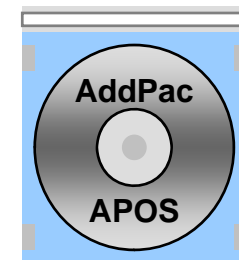
AP1501 1-Port V.35 Leased-Line Router



# Software Service

AP1501 1-Port V.35 Leased-Line Router

- Built-in AddPac APOS Internetworking Software
  - LAN to V.35 Routing Features
  - WAN Interface Features
- Firmware Upgradeable Architecture
- Industry Standard Network Protocol Features
- Highly User Friendly Management Features
  - Smart Web Manager



# Network Service and Features (Cont..)

## AP1501 1-Port V.35 Leased-Line Router

- Protocol Stack
  - IPv4 Routing Stack
  - Over Traffic Control, Over Load Control
- Network Protocol
  - PPP/PPPOE
  - DHCP Client / Server / Relay
  - Frame Relay
  - Bridge
  - CDP (Cisco Discovery Protocol)
  - HTTP, Telnet
  - VLAN



# Network Service and Features (Cont..)

AP1501 1-Port V.35 Leased-Line Router

- Protocol Stack
  - IP/UDP/TCP/ICMP/IGMP
  - RIP
  - OSPF
  - VRRP
  - NAT
  - NTP
  - HTP (HTTP Time Protocol)
  - IP Access-List
  - RADIUS Authentication

# Network Service and Features (Cont..)

## AP1501 1-Port V.35 Leased-Line Router

- Tunneling
  - L2TP/PPTP
  - IPIP
- Management
  - SNMP
  - RMON
  - HTTP
  - CLI (Cisco Style Command Line Interface)
  - FTP
  - TFTP
- QoS
  - QoS Control for LAN and WAN Interface
  - CoS (DSCP)

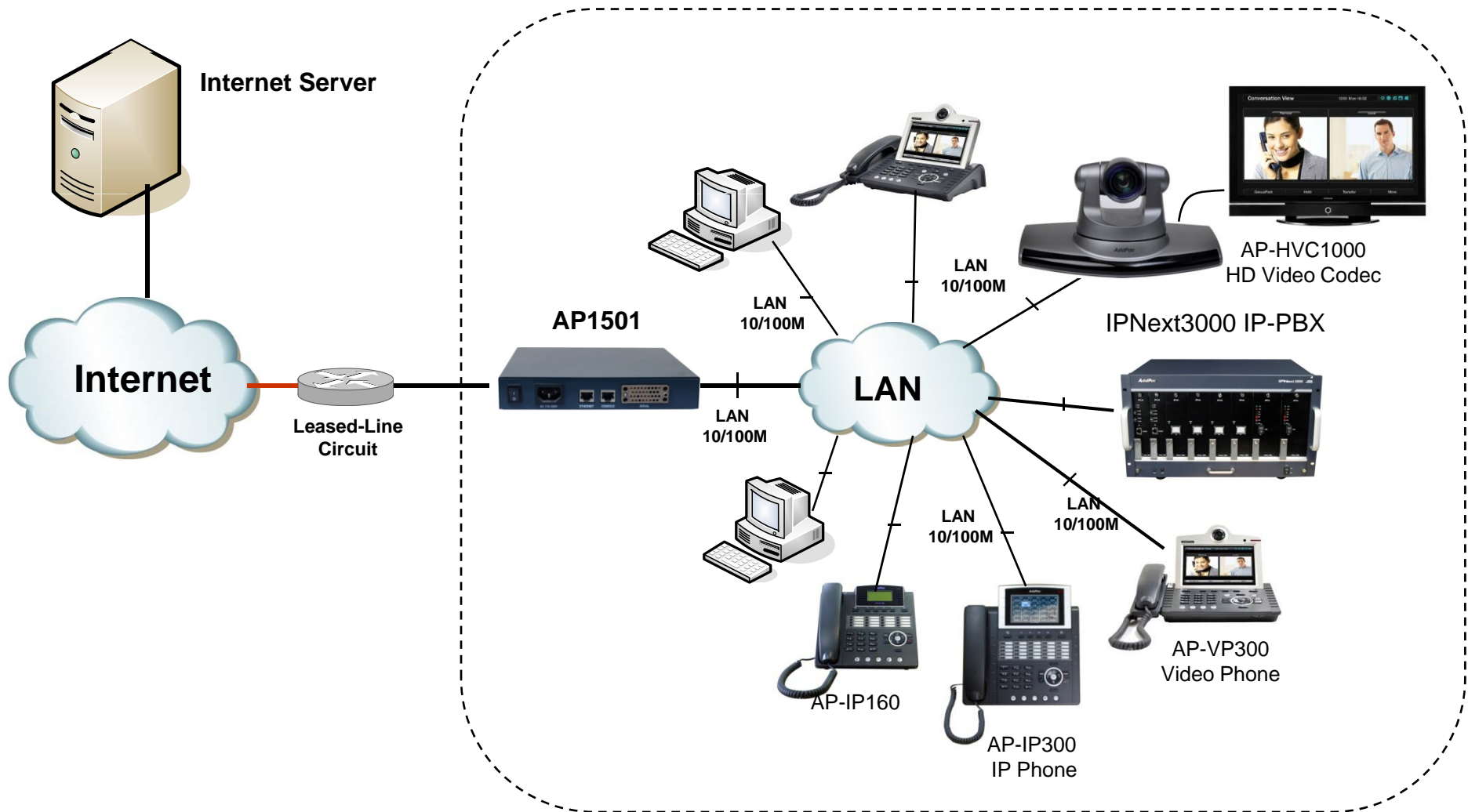
# Network Service and Features (Cont..)

## AP1501 1-Port V.35 Leased-Line Router

- Security Functions
  - Standard & Extended IP Access List
  - Enable/Disable for Specific Network Protocols
  - Multi-level User Account Management
  - Auto-disconnect for Telnet/Console Sessions
  - PPP User Authentication Supports (PAP & CHAP)
- Operation & Managements
  - System Performance Analysis for Process, CPU, Connection Interface
  - Debugging, System Auditing, and Diagnostics Support
  - System Booting and Auto-rebooting with Watchdog Feature
  - System Managements with Data Logging
  - IP Traffic Statistics with Accounting

# Application Diagram

AP1501 1-Port V.35 Leased-Line Router



# Ordering Information

- AP1501 Leased Line Router
  - AP1501 Main Body
  - High-performance RISC CPU
  - One(1) V.35 Interface for WAN Access
  - One(1) 10/100Mbps Fast Ethernet for LAN Access
  - 1-port RS-232C Console
  - Including Network Cable Set & Internal Power Supply, etc.
- Built-in APOS Internetworking Software for AP1501
- Including 1 Year Hardware Warranty
- Product Documents
  - Install and Operation Guide (PDF)
- Pricing
  - AddPac Technology Regional Sales Manager
  - Authorized Sales and Marketing Representatives
  - Please Contact [www.addpac.com](http://www.addpac.com)



# Thank you!

**AddPac Technology Co., Ltd.**  
Sales and Marketing

Phone +82.2.568.3848 (KOREA)

FAX +82.2.568.3847 (KOREA)

E-mail:sales@addpac.com