



AP-NR2000™

Network DVR Server

High-performance Network DVR Server Solution

Time Synchronized DVR Replay



AddPac

AddPac Technology

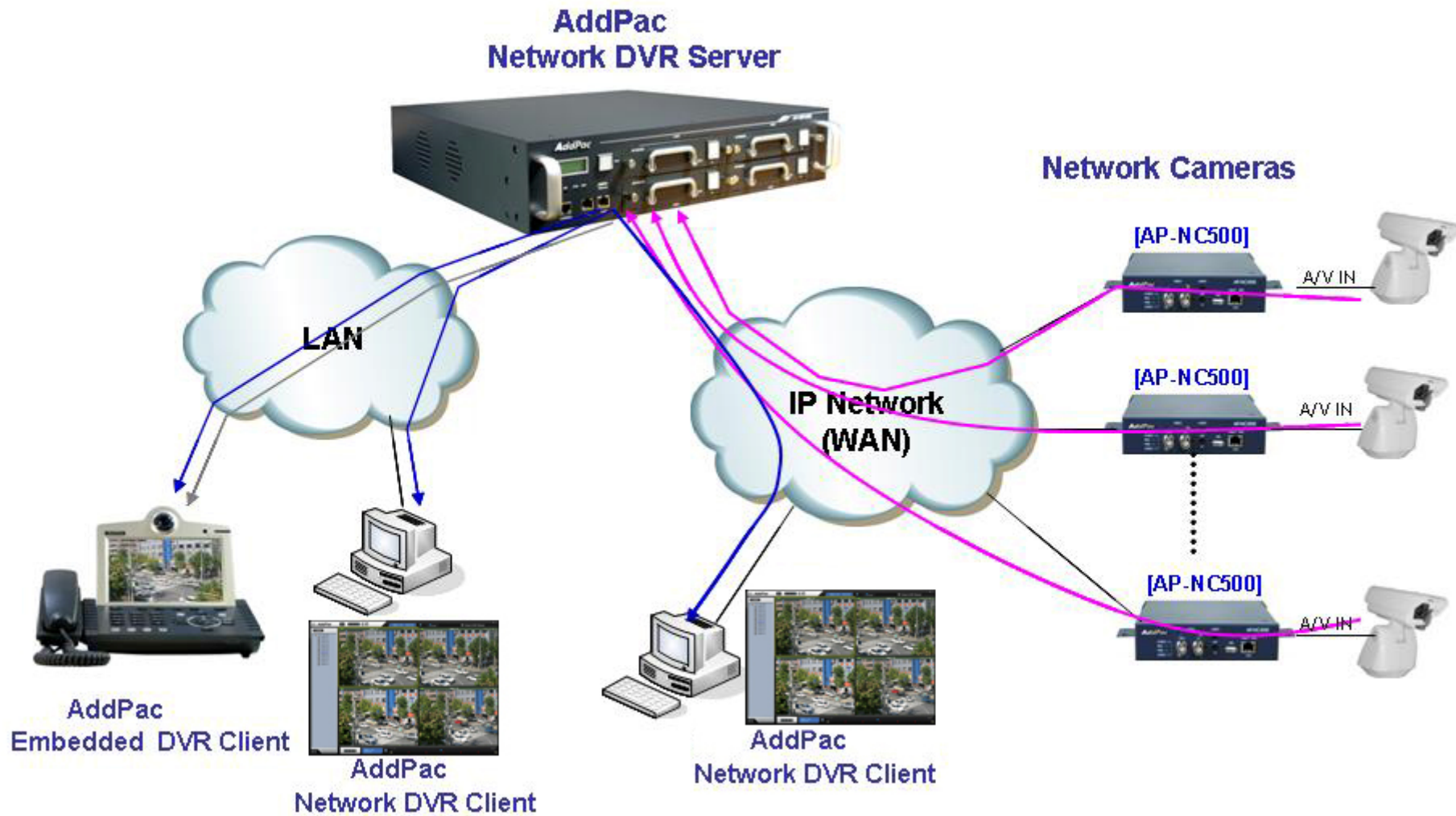
2006, Sales and Marketing

Contents

- Network DVR Service Diagram
- Time-Synchronized DVR Replay Function
- Smart DVR Viewer



Network DVR Service Diagram



Time-Synchronized DVR Replay Function

- **Synchronized Play**
 - Drag & Drop
- **Display Control**
 - Layout Control
 - Viewer Control
 - Synchronized Play Back Control
 - Error Concealment
 - Audio Control
 - Player
 - Snap Shot
- **Time Control**
 - Synchronized Calendar Control
 - Day/Hour/Min Control
- **Others Display**

Time-Synchronized DVR Replay Function (Synchronized Play)

✓ Drag & Drop



Time-Synchronized DVR Replay Function (Display Control)

✓ Layout Control



Time-Synchronized DVR Replay Function (Display Control)

✓ Viewer Control



➤ Left Shift



➤ Right Shift



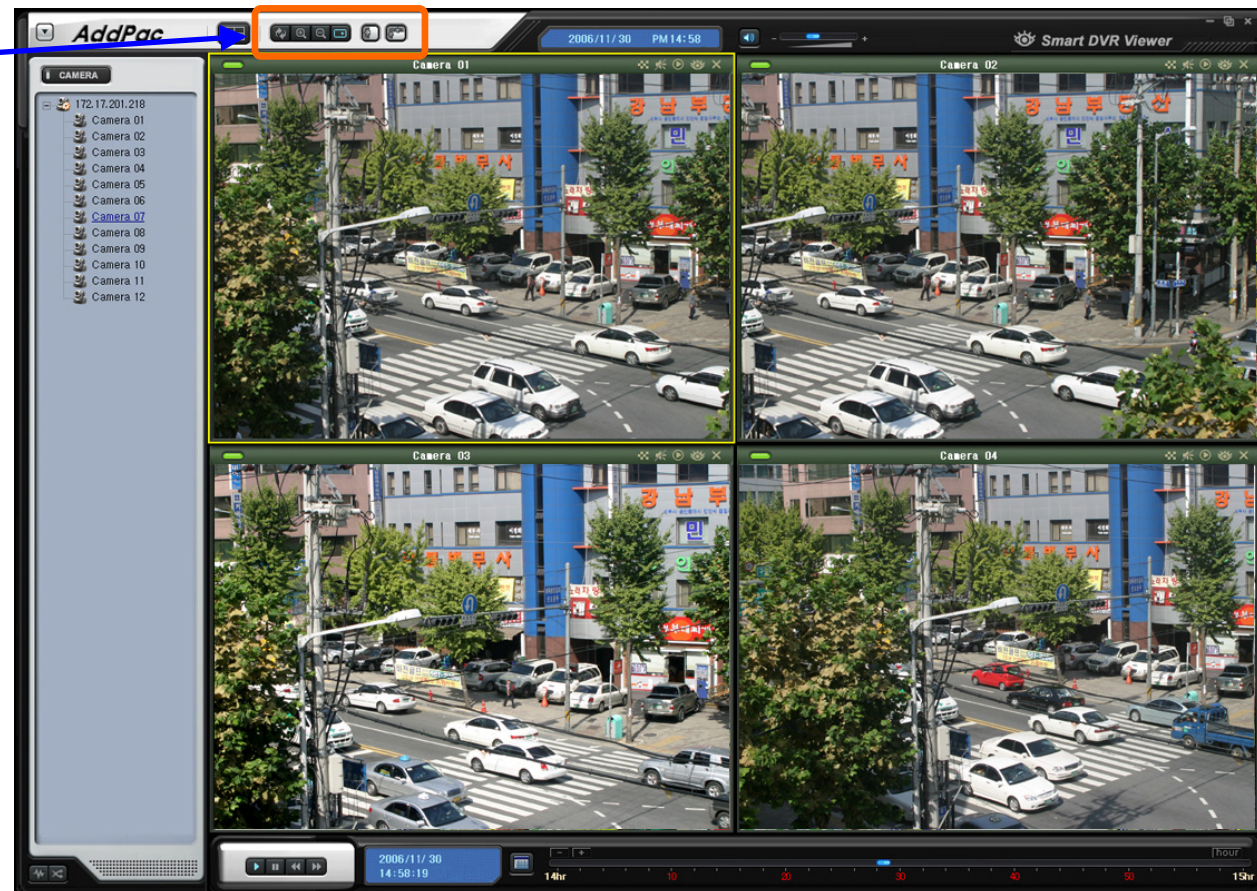
➤ All Left Shift



➤ All Right Shift



➤ Part Zoom Control



Time-Synchronized DVR Replay Function (Display Control)



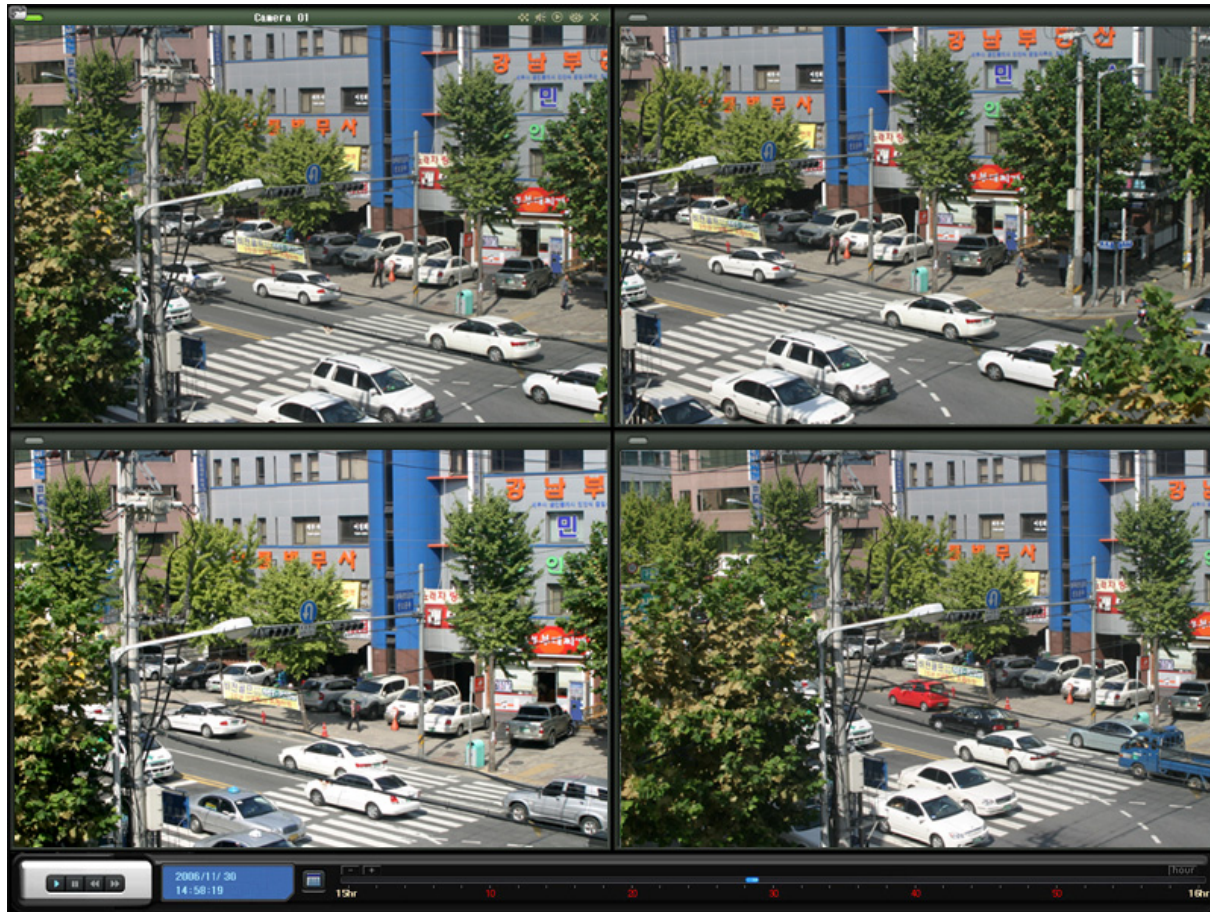
➤ Left Shift - Example1



Time-Synchronized DVR Replay Function (Display Control)



➤ All Left Shift - Example2



Time-Synchronized DVR Replay Function (Display Control)

✓ Synchronized Play Back Control

The screenshot displays the AddPac Smart DVR Viewer interface. On the left, a camera list shows 'Camera 01' through 'Camera 12'. The main area is a 2x2 grid of camera feeds. A control bar is overlaid on the top-left camera feed, with red arrows pointing to labels: Error Concealment, Audio Control, Single Player, Snap Shot, and Close. A blue arrow points from the control bar to the top-right camera feed. The interface also shows a date and time display (2006/11/30 PM 14:58) and a playback timeline at the bottom.

Time-Synchronized DVR Replay Function (Time Control)

✓ Synchronized Calendar Control

Click

2006 / 11						
SUN	MON	TUE	WED	THU	FRI	SAT
29	30	31	1	2	3	4
5	6	7	8	9	10	11
12	13	14	15	16	17	18
19	20	21	22	23	24	25
26	27	28	29	30	1	2
3	4	5	6	7	8	9

2006-11-30

Choice

2006/11/30 PM14:58

Camera 01

Camera 02

Camera 03

Camera 04

2006/11/30 14:58:19

Time-Synchronized DVR Replay Function (Time Control)

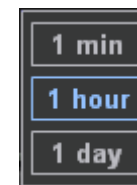
✓ Day/Hour/Min Control



- Status Display Setup

hour

Click



Choice

Time-Synchronized DVR Replay Function (Others Display)



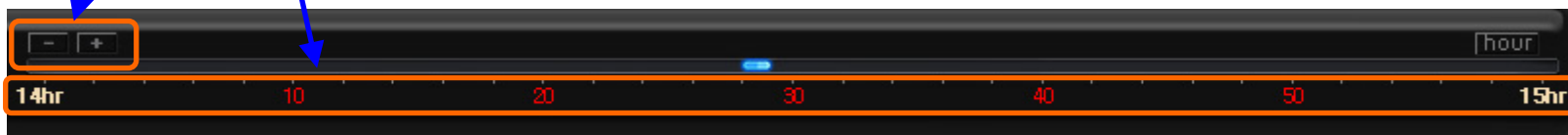
Time-Synchronized DVR Replay Function (Others Display)

- Synchronized
Status Bar



Time Move
(1Day/1Hour/1Min)

Time Zone



Network DVR Server

Thank you!

AddPac Technology Co., Ltd.
Sales and Marketing

Phone +82.2.568.3848 (KOREA)

FAX +82.2.568.3847 (KOREA)

E-mail sales@addpac.com