



# AP-IP100 BcN IP Phone

High Performance Broadband Convergence Network  
IP Phone Solution

## Dual MAC Address Concept



**AddPac**

AddPac Technology

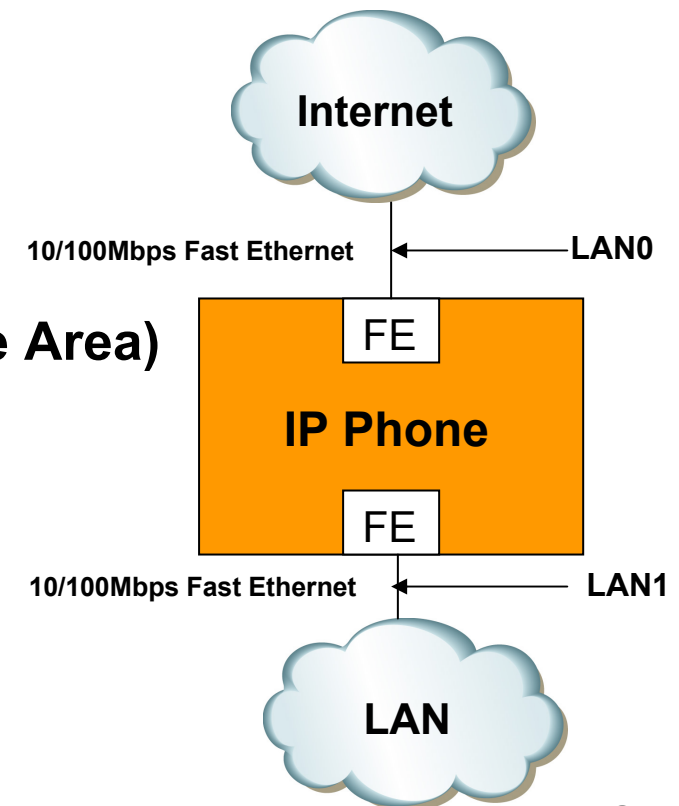
[www.addpac.com](http://www.addpac.com)

# Contents

- AP-IP100 H/W Specification
- QoS Enabled VoIP Service
- Dual MAC Address Features
- Network Diagram

# AP-IP100 H/W Specification

- **RISC+DSP Microprocessor Computing Power (Dual Processor Architecture)**
- **Optional FXO Interface for PSTN Backup : AP-IP100E**
- **Optional FXS Interface for FAX, Phone : AP-IP100B**
- **High quality Audio and Voice Interface**
  - Stereo Audio Input Connector
  - Stereo Audio Output Connector
- **Network Interface**
  - Two(2) 10/100Mbps Fast Ethernet
- **LCD Window : 66.54mm x 33.26mm(Active Area)**  
**Graphic LCD**
- **Power Supply**
  - External Power Adaptor (5V, 2A)



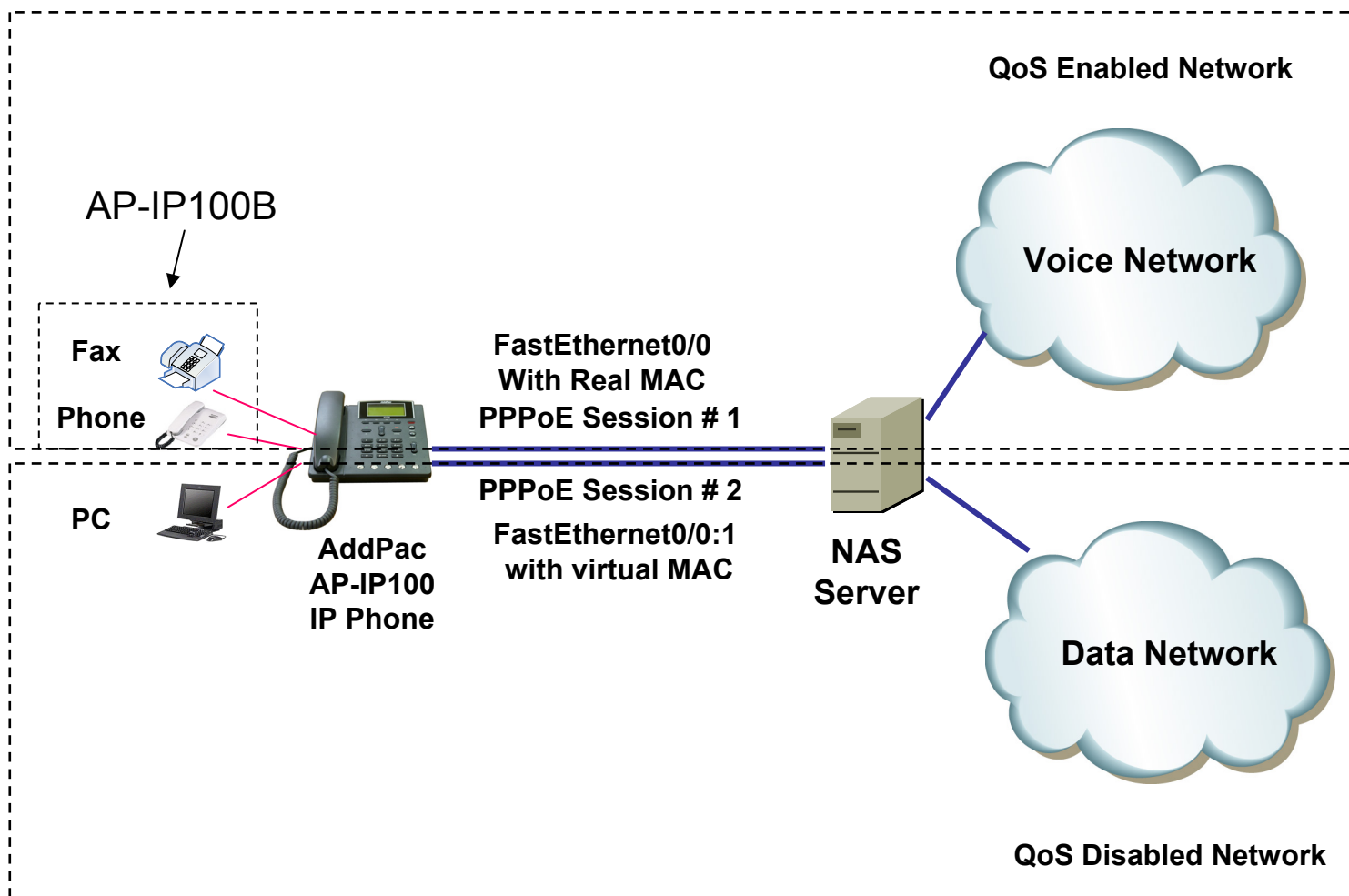
# QoS Enabled VoIP Service

- AddPac VoIP Gateway supports Two(2) Ethernet Interface for LAN traffic such as Personal Computer.
- Some ISP want to provide the QoS Enable Network Service for High Quality VoIP Service.
- QoS Enabled Network Service for Real-Time Traffic such as Voice over IP traffic
- Best Effort Network Service for Normal Data Traffic such as Web, Email

# Dual MAC Address Features

- Normally working at PPPoE Environment (DHCP also possible)
- PPPoE Server(NAS) has 2 service (voice & data)
- Gateway support 2 MAC Address
  - Real MAC Address
  - Virtual MAC Address
- The User set the virtual MAC address at Ethernet Sub-interface
- Gateway Get Public Address using PPPoE with different PPPoE Service Name

# Network Diagram



# IP Phone Series

# Thank you!

**AddPac Technology Co., Ltd.**  
Sales and Marketing

Phone +82.2.568.3848 (KOREA)

FAX +82.2.568.3847 (KOREA)

E-mail [sales@addpac.com](mailto:sales@addpac.com)