

# AP-VP280

## BcN Video Phone

High Performance Broadband Convergence Network  
Video Terminal Solution

### Preliminary Product Overview



# **AddPac**

**AddPac Technology**

Sales and Marketing

[www.addpac.com](http://www.addpac.com)

# High Quality, High Resolution

AP-VP280 Video Phone



**AddPac**

[www.addpac.com](http://www.addpac.com)

# High Quality, High Resolution

AP-VP280 Video Phone



**AddPac**

[www.addpac.com](http://www.addpac.com)

# Contents

## AP-VP280 Video Phone

- Product Overview
- Benefits and Features
- Hardware Specification
- Multimedia Service
- Software Service
- Video Service & Features
- Audio & Voice Service and Features
- Network Service and Features
- OSD Software Features
- Application Area
- Ordering Information



# Product Overview

## AP-VP280 Video Phone

- IP based Video Phone Solution
- VoD (Video on Demand) Service
- IPTV Service
- Network Surveillance Service
- High-performance Video, Audio, and Voice Service
- Flexible Videoconferencing Deployment
- Firmware Upgradeable Architecture
- Video Solution with Outstanding Network Service Capability
- Audio/Video Privacy Protection

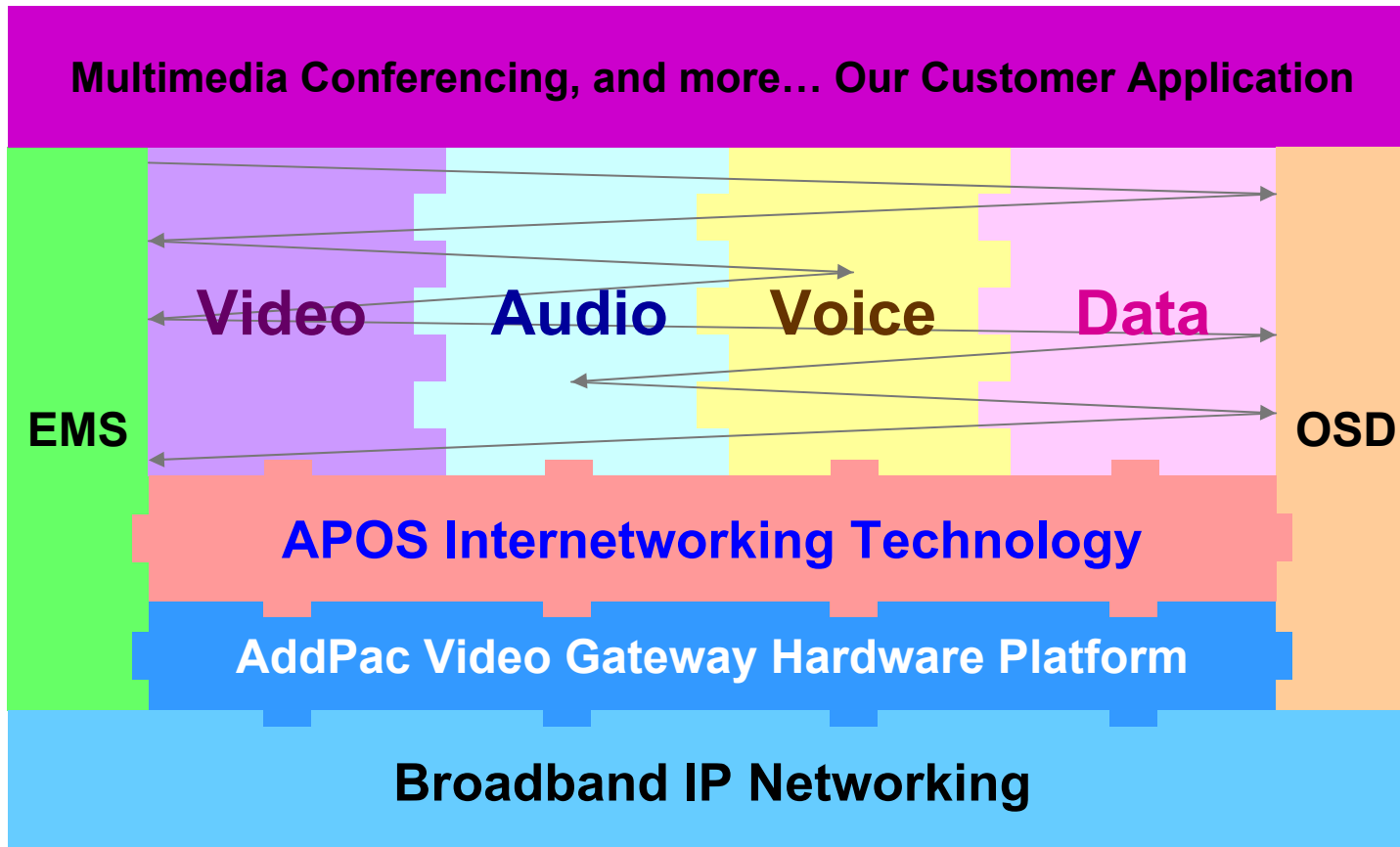
# Product Highlights

AP-VP280 Video Phone



# Multimedia Service

AP-VP280 Video Phone



- APOS : AddPac Internetworking Operating System
- OSD : On- Screen Display
- EMS : Element Management System

# Benefits and Features

## AP-VP280 Video Phone

- **7 Inch LCD Display, Touch Screen, Remote Controller**
- **External Video Interface**
  - Composite (RCA) Video In/Out, S-Video Out
  - Audio (RCA) In/Out
- **High-performance Video Codec Support**
  - H.263, MPEG-4, JPEG, and H.264
- **High-performance Audio Codec Support**
  - G.722(16KHz), G.711,G.729,G.723.1 ,etc
- **Powerful Image Resolution Support**
  - QCIF(176x144), CIF(352x288), QVGA(320x240), and VGA(640x480)
- **Up to 30fps at 1Mbps with VGA-Resolution(MPEG-4)**
- **Video Conference Call Support (AddPac MCU Inter-working)**
- **SIP, H.323 Signaling Support**
- **Rate Control for Video Traffic QoS**
  - Ensuring Optimized Quality, Frame Rate with Limited Bandwidth
- **High-end Error Resilient Against Various Packet Error**



# Hardware Specification

AP-VP280 Video Phone

RISC  
CPU

High-end  
DSP

- **RISC Microprocessor Computing Power**
- **High-end Programmable DSP Hardware Architecture**
- **Powerful Video Interface**
  - RCA Video Input/Output, S-Video Output
- **High quality Audio and Voice Interface**
  - Stereo Audio Input & Output Connector
- **Network Interface**
  - Two(2) 10/100Mbps Fast Ethernet
  - One(1) RS-232C Console
  - One(1) USB 1.0 Interface
- **PSTN Interface**
  - One(1) FXO(RJ11) interface



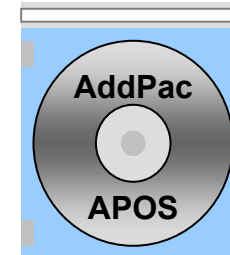
**AddPac**

[www.addpac.com](http://www.addpac.com)

# Software Service

AP-VP280 Video Phone

- **Built-in AddPac APOS Internetworking Software**
  - Scalability, Functionality, and Stability Features
  - Video Traffic QoS Control
- **Programmable Video, Audio, and Voice Services**
  - Video Codes, Audio, and Voice Codec
- **Firmware Upgradeable DSP Architecture**
- **OSD (On-screen Display) Function Support**
- **Industry Standard IP based Network Protocol Features**



# Video Service and Features

## AP-VP280 Video Phone

- **Various Video Networking Interface**
  - Composite (RCA), S-Video
- **High-performance Video Codec Support**
  - H.263, MPEG-4, JPEG, and H.264
- **Powerful Image Resolution Support**
  - QCIF(176x144), CIF(352x288), QVGA(320x240), and VGA(640x480)
- **Up to 30fps at 1Mbps with VGA-Resolution(MPEG-4)**
- **64Kbps to 2Mbps Operating Video Traffic Bandwidth**
- **Rate Control for Video Traffic QoS**
  - Ensuring Optimized Quality
  - Frame Rate with Limited Bandwidth
- **High-end Error Resilient Against Various Packet Error**

# Audio & Voice Service and Features

## AP-VP280 Video Phone

- **Audio & Voice Networking Interface**
  - Audio Input/Output Port (2 x 3.5mm Stereo Female Connector)
- **VoIP based Signaling Protocol Support**
  - H.323, SIP Multiple Signaling Protocol Stack
  - H.323 Gateway, Gatekeeper Support
- **High-performance Audio & Voice Codec Support**
  - Line IN/OUT : G.726, G.711 Audio Codec, etc
- **Enhanced QoS Management Features for Voice Traffics**

# Network Service and Features

AP-VP280 Video Phone

## **Basic Network Protocols**

- ARP, IP, IPv6, TCP, UDP, ICMP, ICMPv6, SCTP, IGMP, MLD

## **Routing Protocol**

- IPv4 : Static
- IPv6 : Static

## **Service Protocol**

- FTP, Telnet, TFTP, DHCP Server/Relay, SNMP Server
- CDP (Cisco Discovery Protocol)
- DNS Resolver , DDNS(nsupdate)
- Bridge
- Syslog
- IP/IPv6 policy control (QoS)
- VPDN (Virtual Private Dial-up Network : L2TP Server)

# Network Service and Features

AP-VP280 Video Phone

## **IPv4/IPv6 Interworking**

- NAT/PAT for IPv4
- IP connect (formerly ip-share) and device cascade for IPv4
- IP/IP, IP/GRE tunneling
- NAT-PT
- 6to4, Autoconfig tunneling

## **IPv4 Address Configuration**

- Fixed (Static)
- DHCP
- PPPoE

## **IPv6 Address Configuration**

- Fixed (Static)
- EUI-64
- Autoconfig (Neighbor Advertisement and Solicitation)

# Network Service and Features

AP-VP280 Video Phone

## **Miscellaneous**

- Cisco Style CLI
- Standard & Extended IPv4/IPv6 Access List
- Multi-level User Account Management
- IP accounting
- fsh (Embedded file system shell)
- STUN Client

# Network Service and Features

AP-VP280 Video Phone

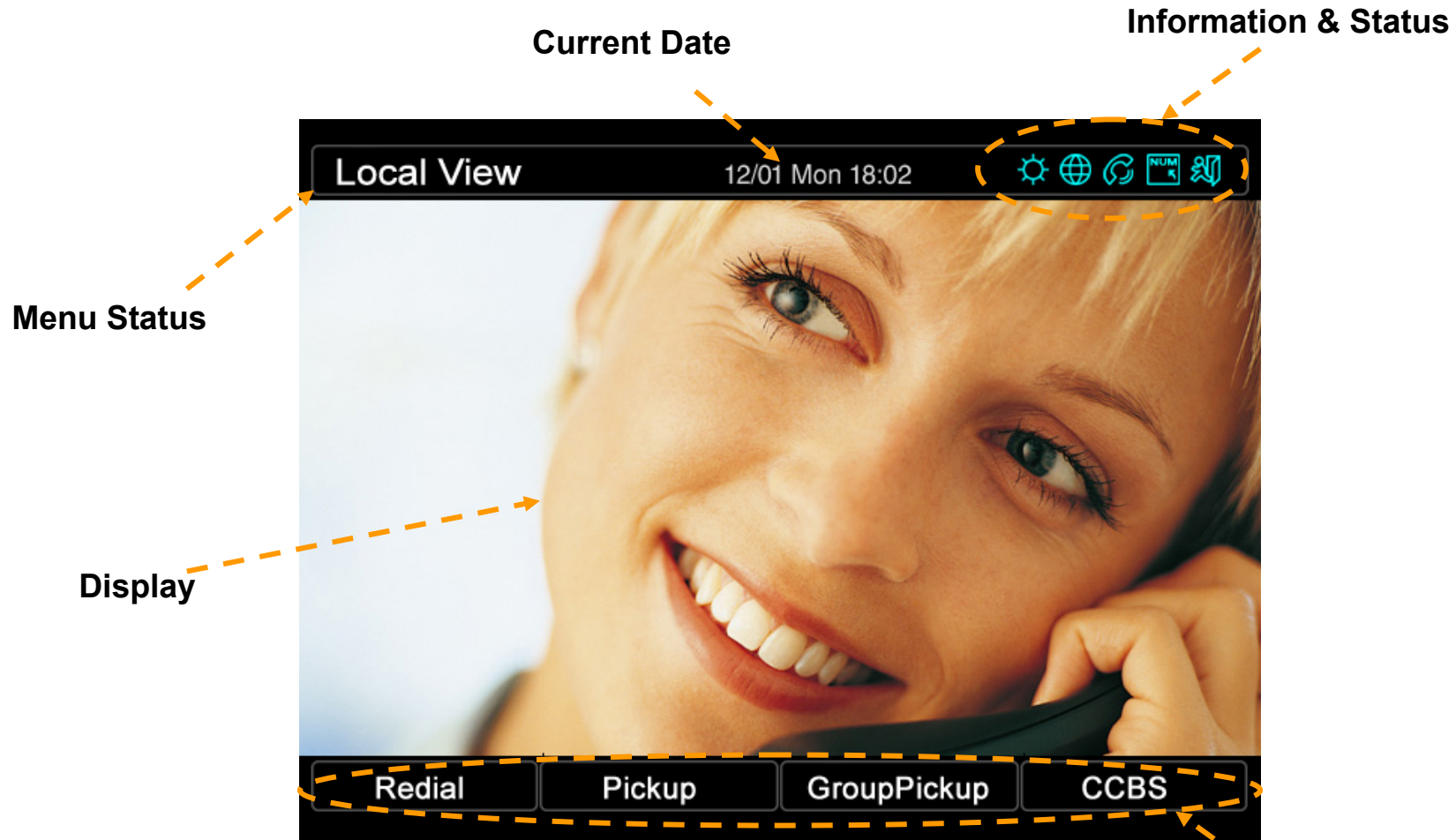
## **SNMP MIBs**

- MIB-II
- RMON MIBs (Statistics, History, Alarm, Hosts Group)
- RFC2465 Management Information Base for IP Version 6: Textual Conventions and General Group
- RFC2466 Management Information Base for IP Version 6: ICMPv6 Group
- RFC2452 IP Version 6 Management Information Base for the Transmission Control Protocol
- RFC2454 IP Version 6 Management Information Base for the User Datagram Protocol
- AddPac Enterprise MIBs
- etc



# OSD Software Features

AP-VP280 Video Phone OSD Service



# OSD Software Features

AP-VP280 Video Phone OSD Service



IP-PBX Interworking

# OSD Software Features

AP-VP280 Video Phone OSD Service



Broadcasting Service  
at conversation mode

# OSD Software Features

AP-VP280 Video Phone OSD Service

## Menu View



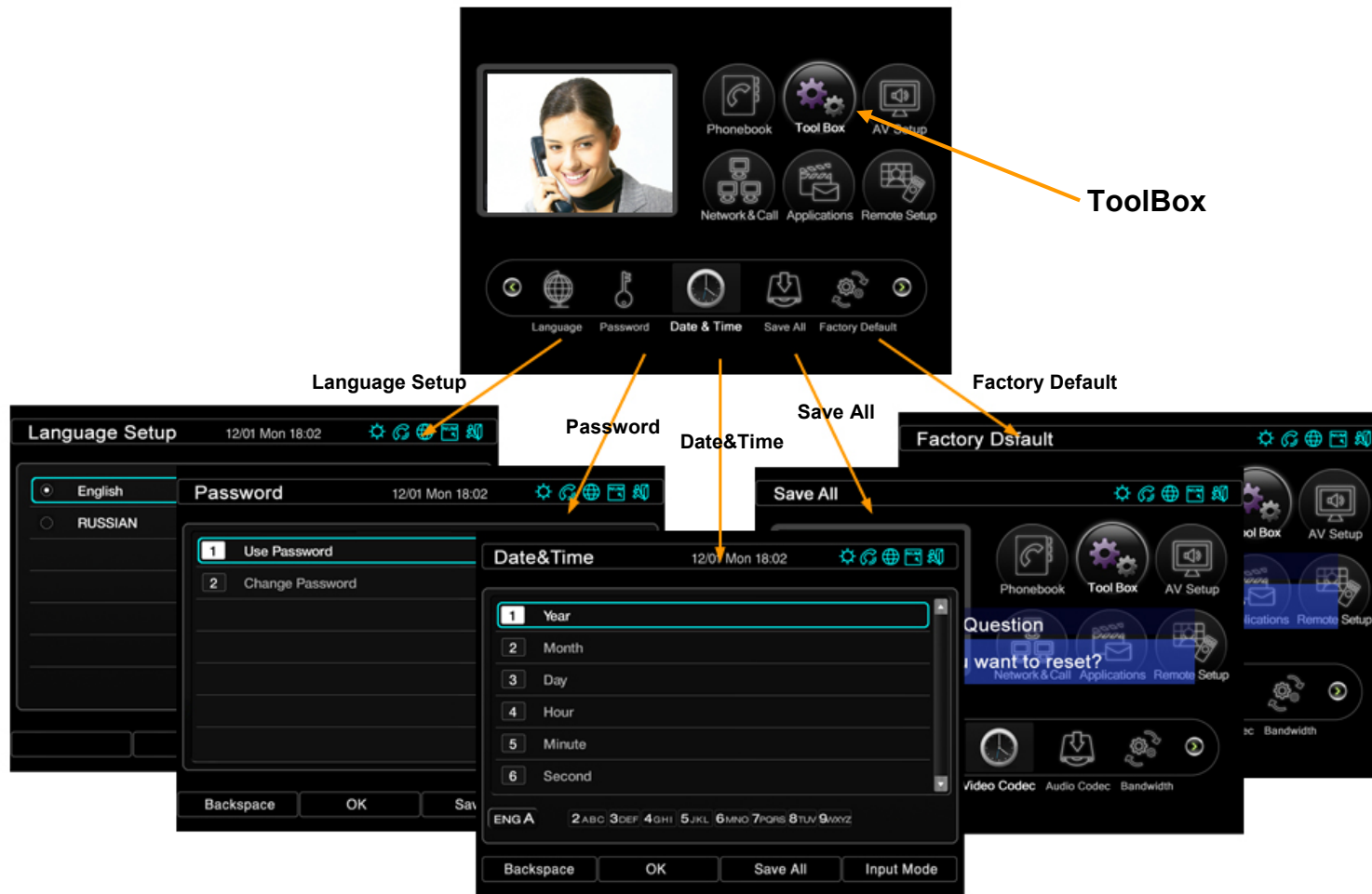
# OSD Software Features

AP-VP280 Video Phone OSD Service



# OSD Software Features

AP-VP280 Video Phone OSD Service



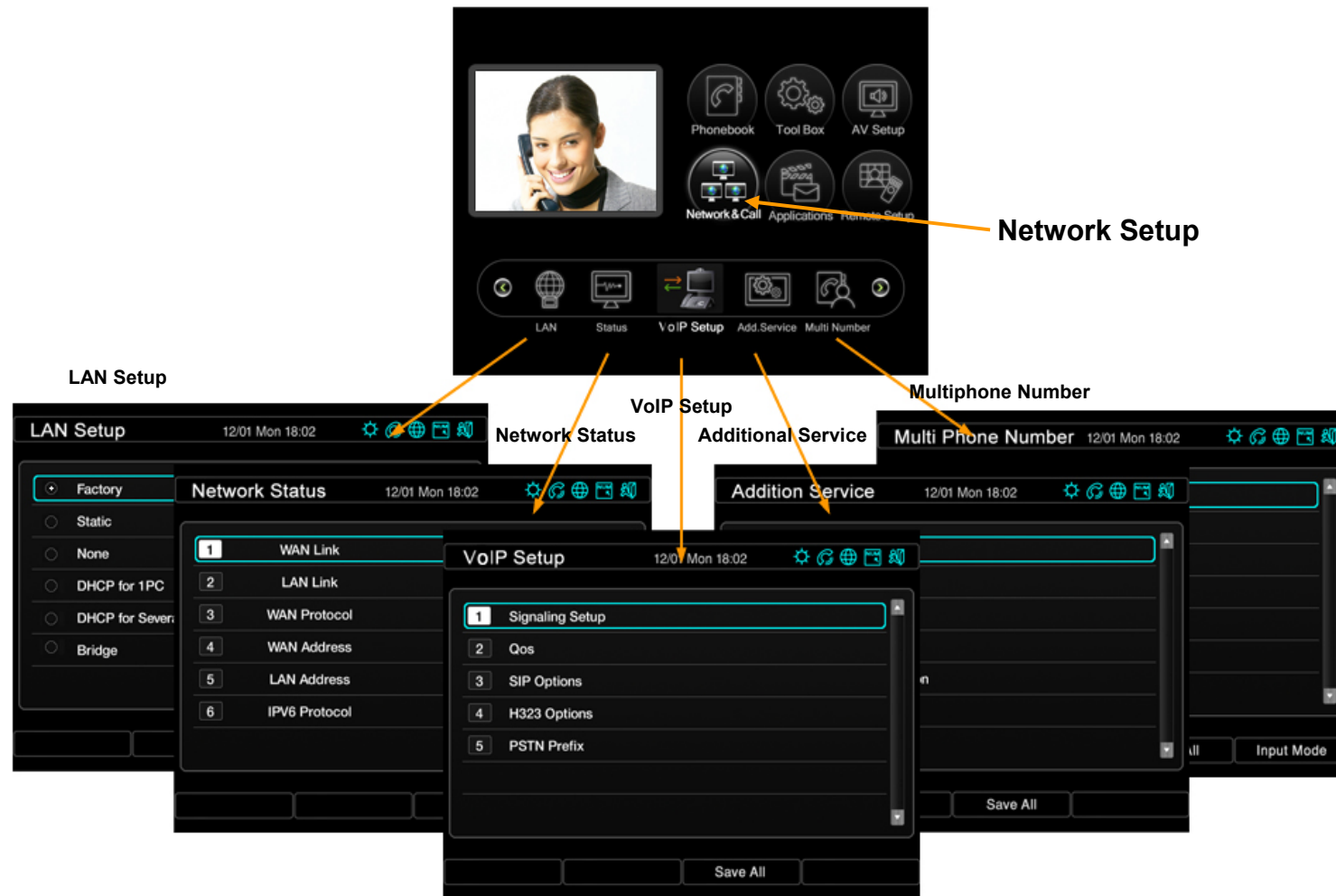
# OSD Software Features

AP-VP280 Video Phone OSD Service



# OSD Software Features

AP-VP280 Video Phone OSD Service





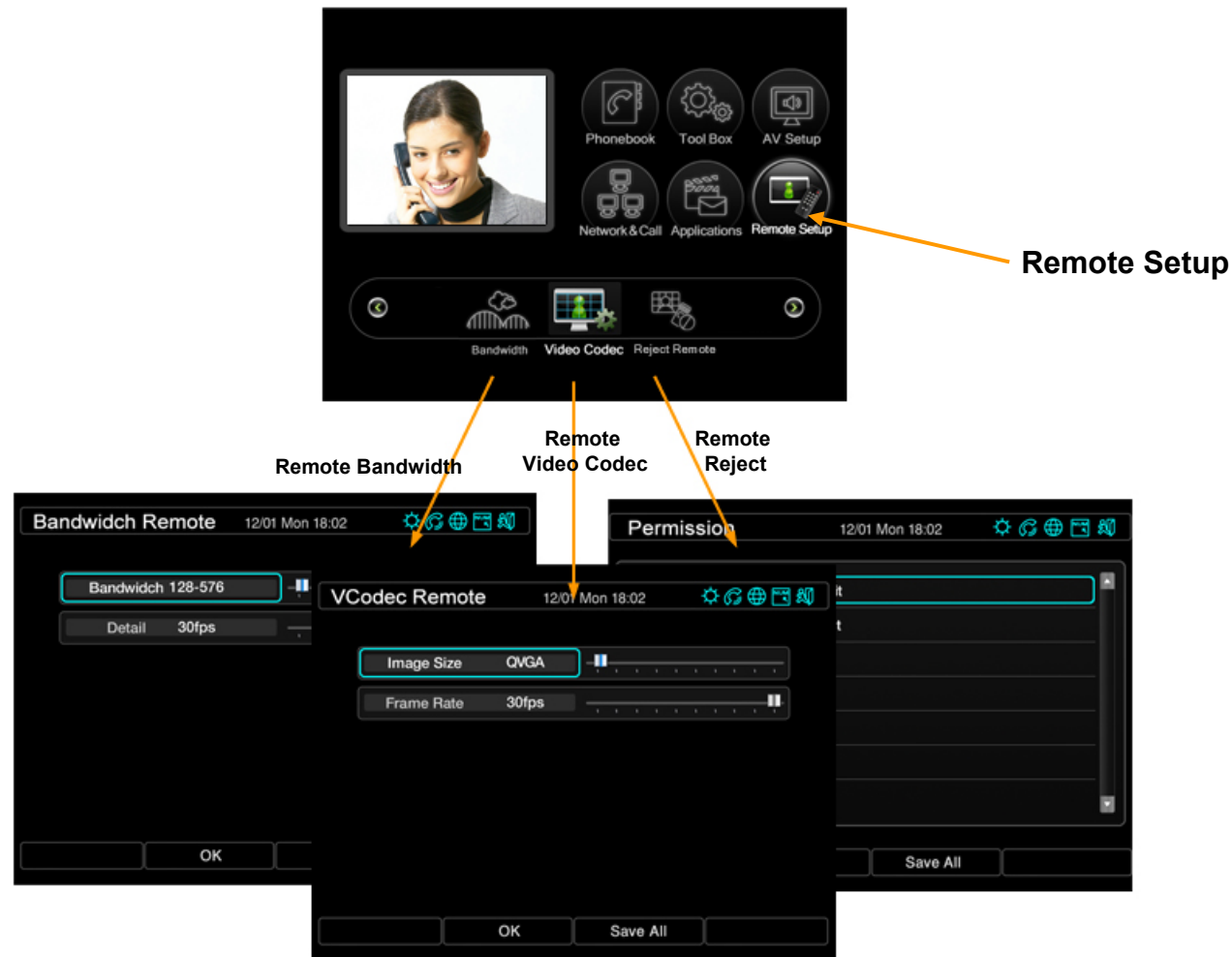
# OSD Software Features

AP-VP280 Video Phone OSD Service



# OSD Software Features

AP-VP280 Video Phone OSD Service



# AP-VP280 Video Phone

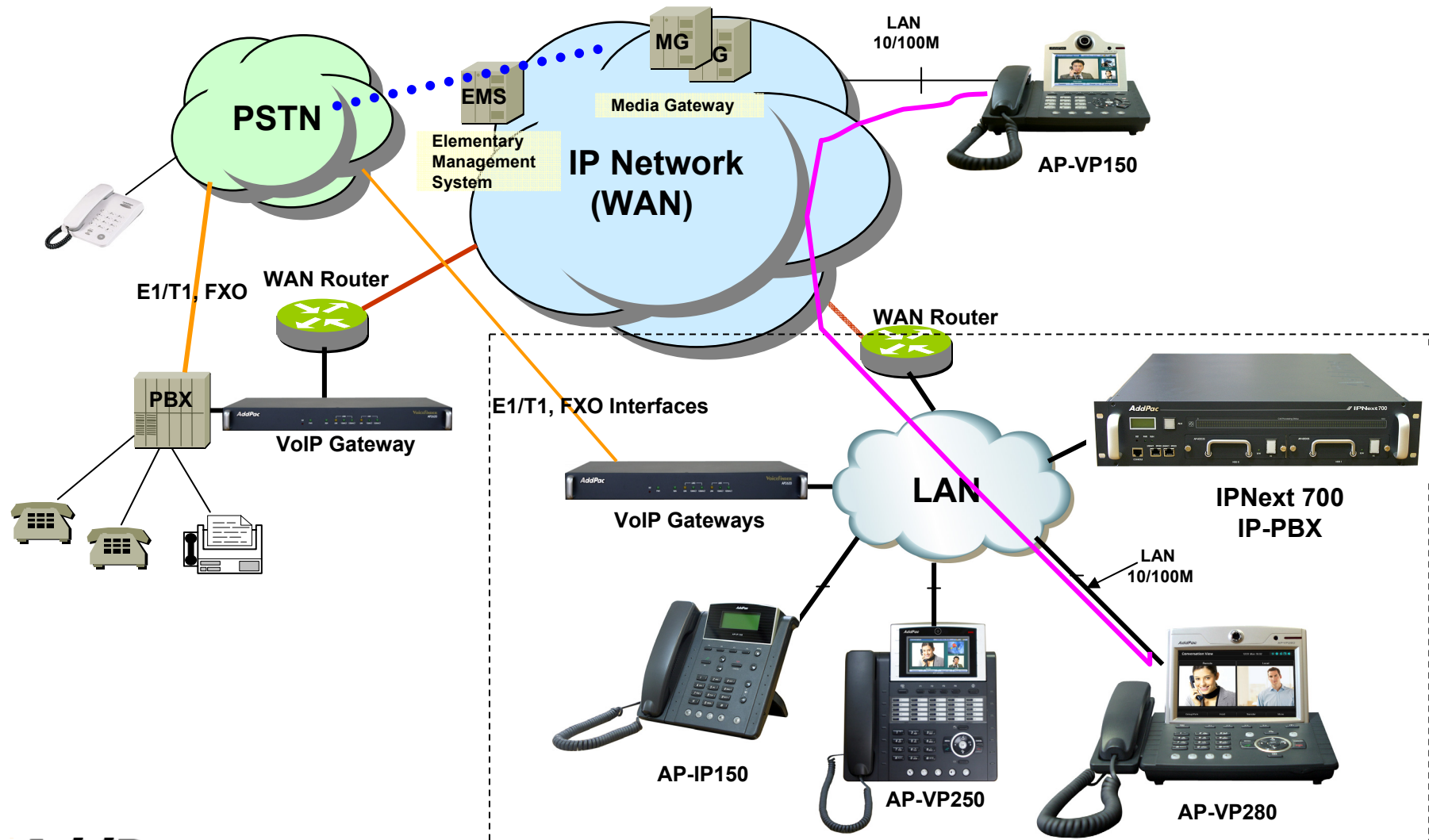
## Application Area

- IP-PBX Video Terminal (SIP, H.323, etc)
- Audio/Video Real-time Broadcasting
- Video on Demand Application
- IPTV Application for Enterprise
- Unattended Surveillance
- Video Telephony
- Video Conference



# Standard IP-PBX Application

AP-VP280 Video Phone



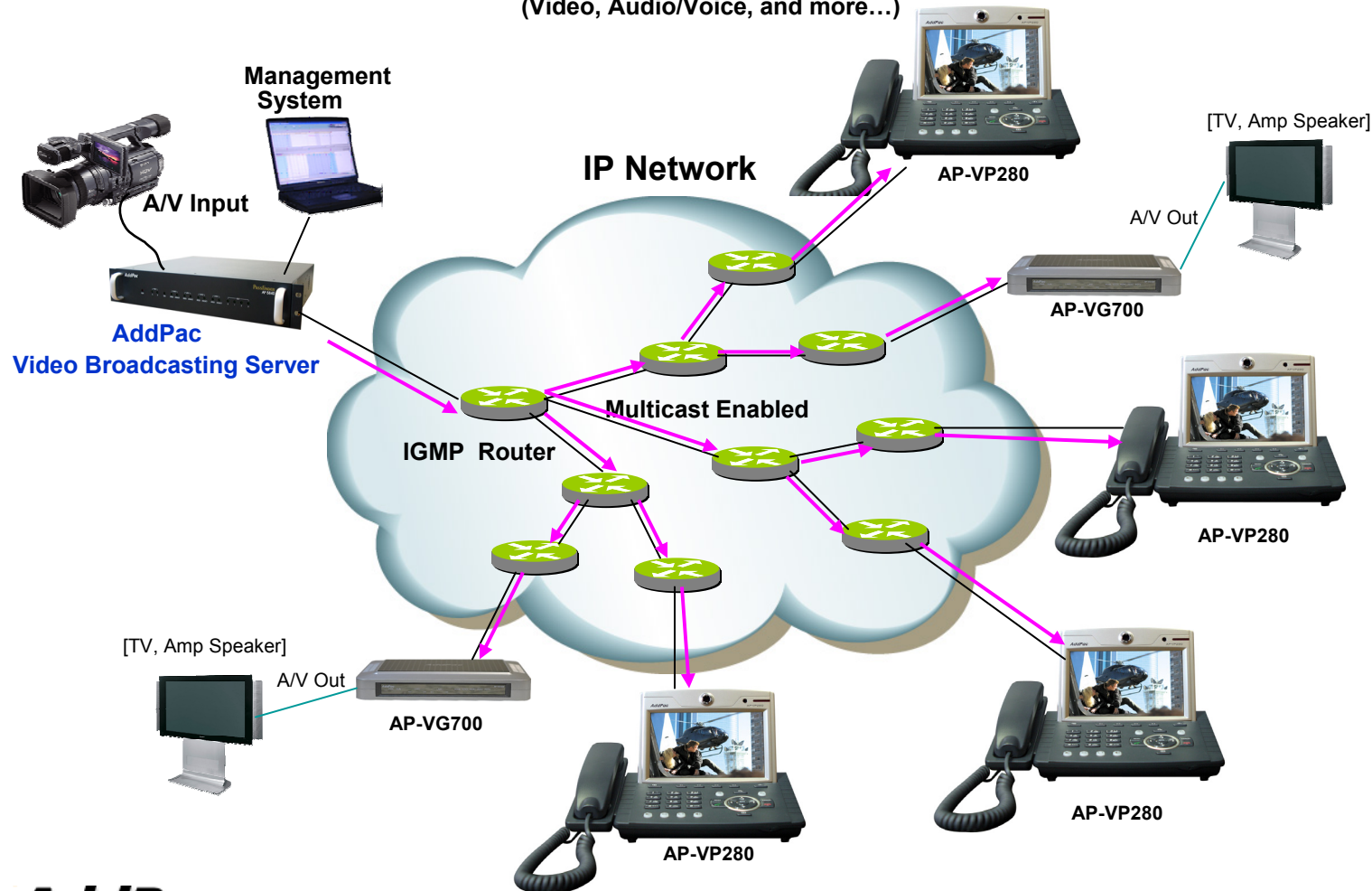
**AddPac**

[www.addpac.com](http://www.addpac.com)

# Audio/Video Real-time Broadcasting

## AP-VP280 Video Phone

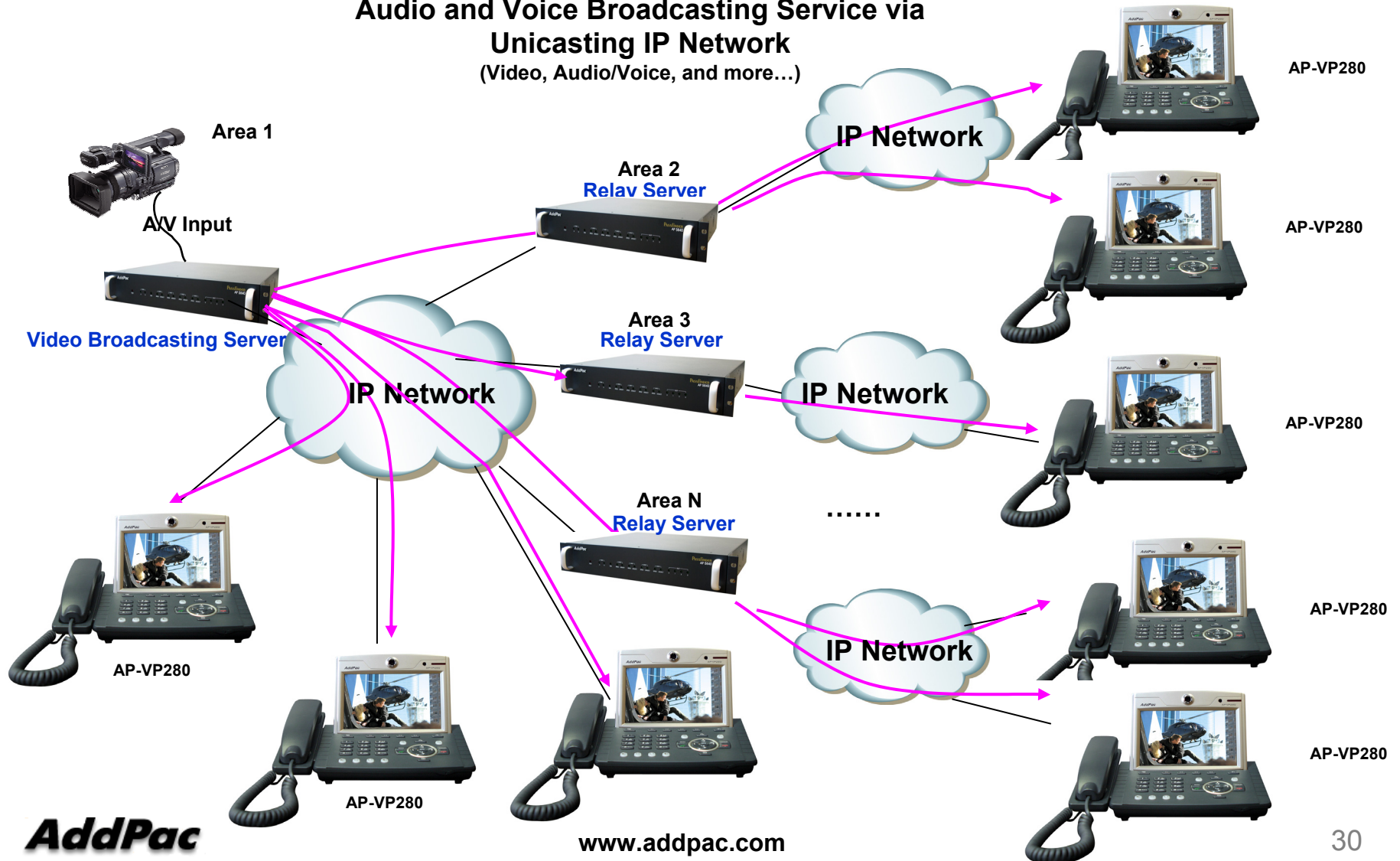
Audio and Video Broadcasting Service via  
Multicasting IP Network  
(Video, Audio/Voice, and more...)



# Audio/Video Real-time Broadcasting

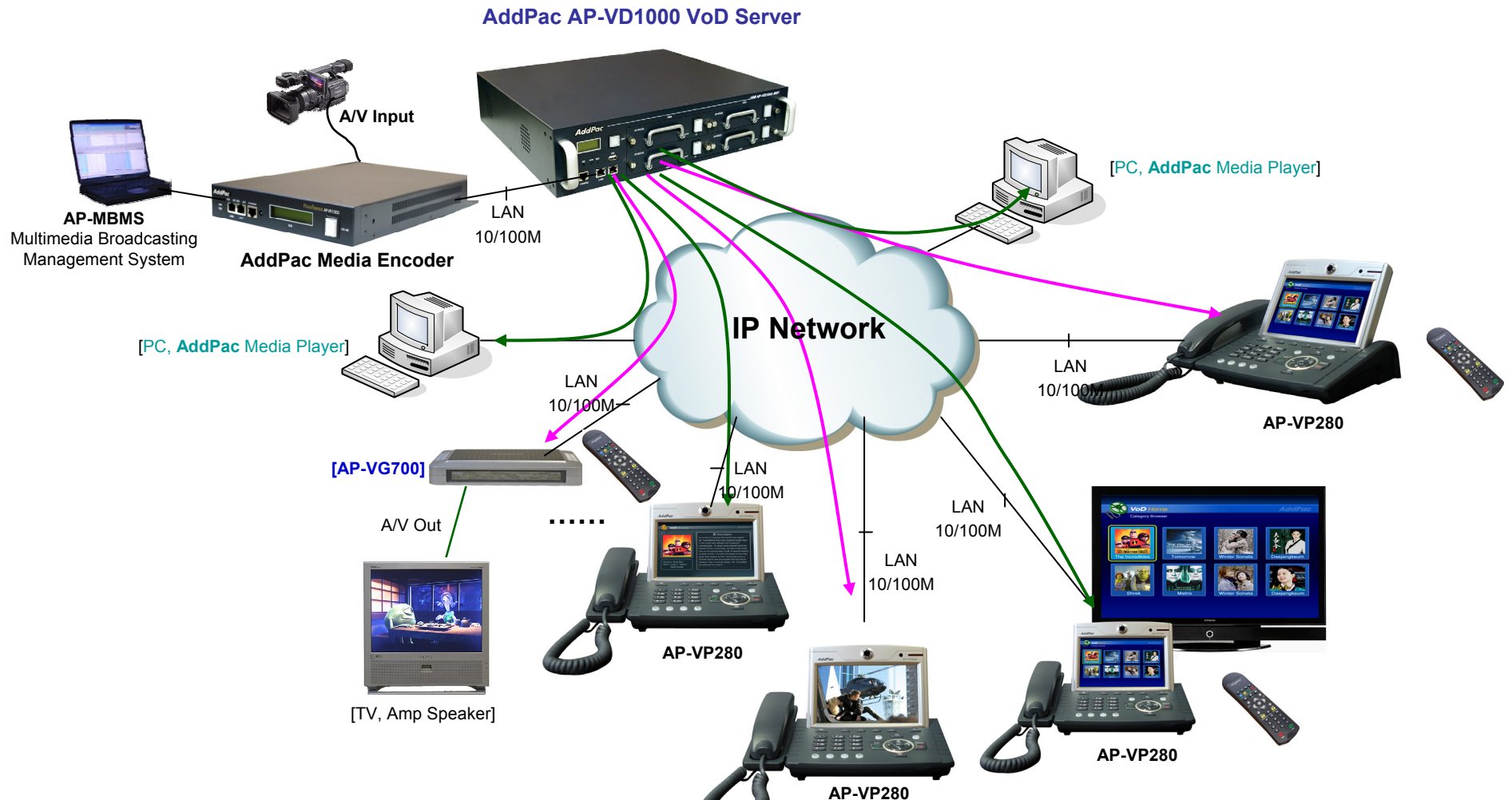
## AP-VP280 Video Phone

Audio and Voice Broadcasting Service via  
Unicasting IP Network  
(Video, Audio/Voice, and more...)



# Video on Demand Service

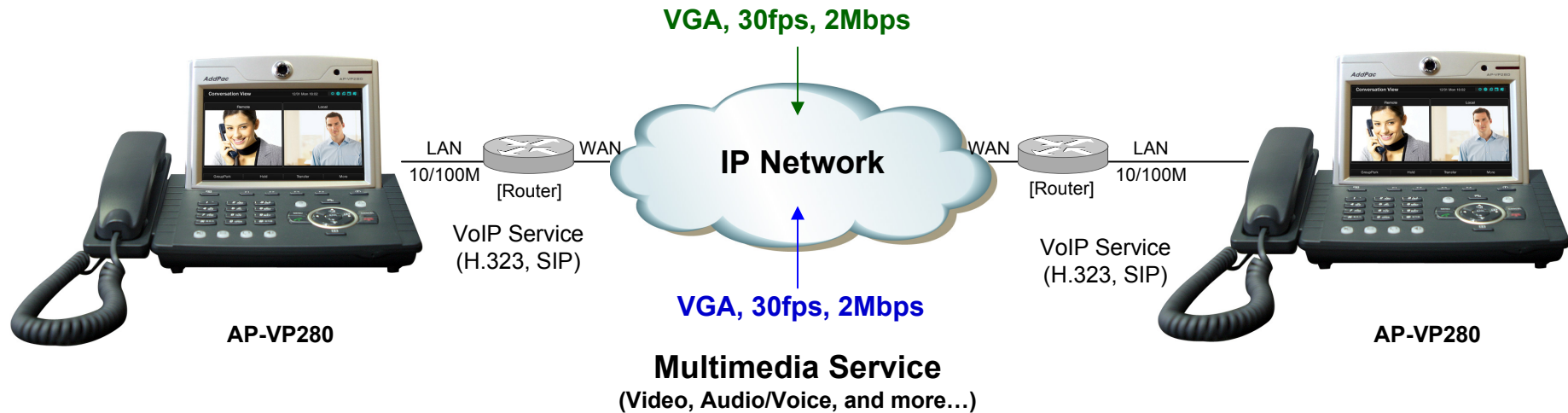
## AP-VP280 Video Phone



# Video Telephony Application

AP-VP280 Video Phone

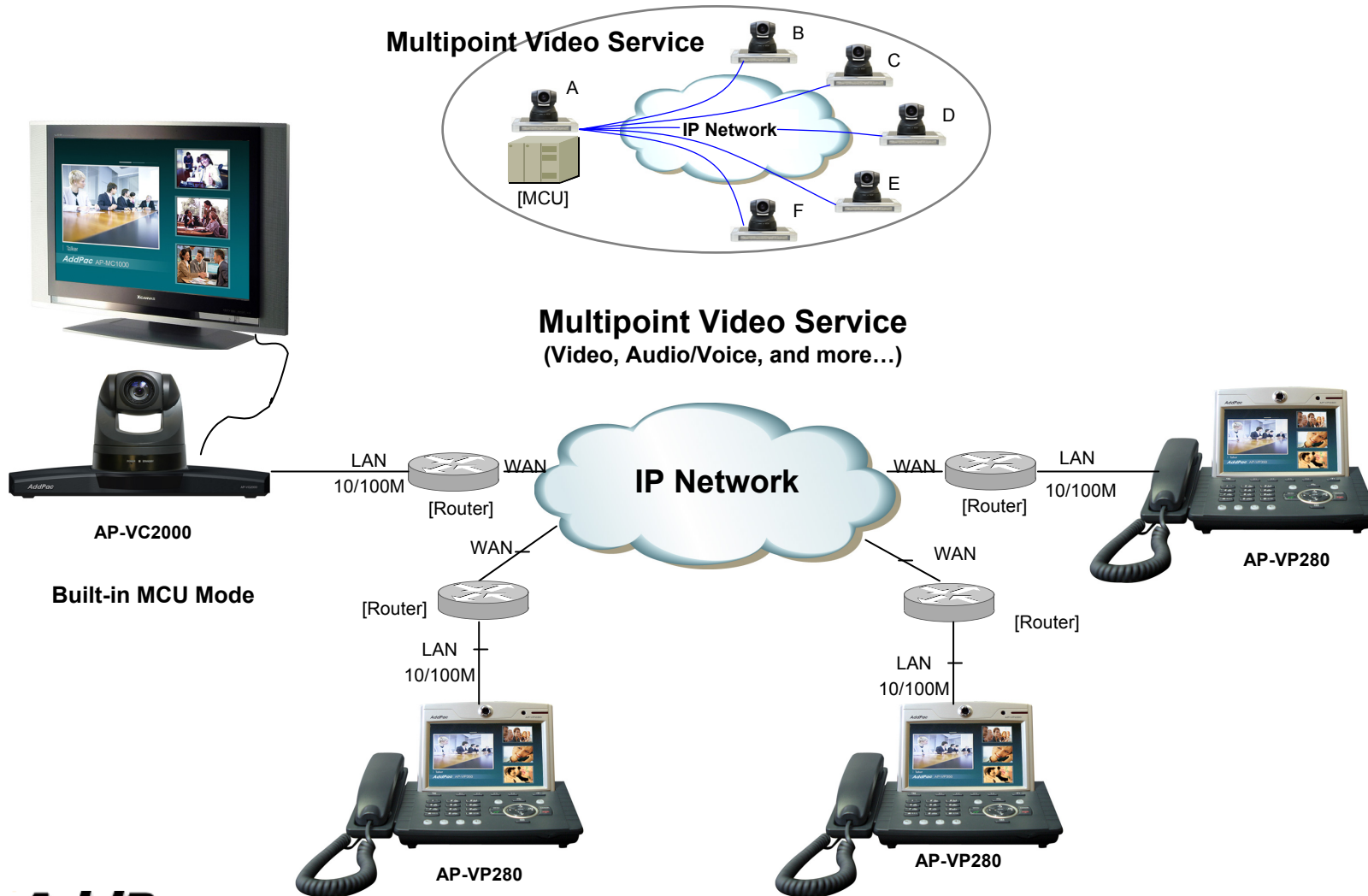
**Point-to-Point Video Service**  
(symmetric video quality)





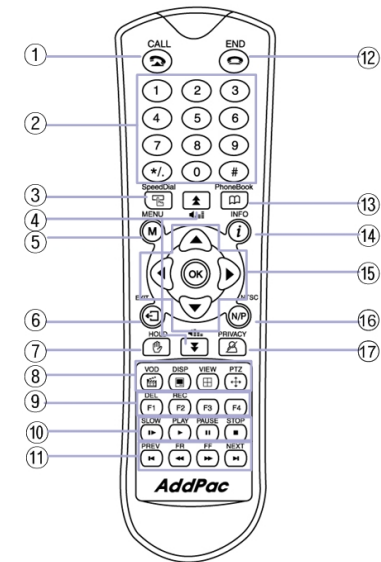
# Video Conference

## AP-VP280 Video Phone



# Remocon Specification

AP-VP280 Video Phone



Remote Commander

## Remote Control

No	Function	No	Function
1	CALL/Recent Call	10	SLOW PLAY, PLAY, PAUSE, STOP
2	Keypad	11	PREVIOUS, FAST REWARD, FAST FORWARD, NEXT
3	SpeedDial	12	END
4	Zoom In/Out, Volume	13	PhoneBook
5	MENU	14	INFO
6	EXIT	15	ARROW KEY
7	HOLD	16	NTSC/PAL
8	VOD, DISPLAY, VIEW Mode, PAN/TILT	17	PRIVACY
9	DEL, REC, MIRROR, Call Status		

# Ordering Information

- **AP-VP280 Video Phone Hardware**
  - AP-VP280 Video Phone Main Body
  - RISC Microprocessor with High-end Programmable DSP Architecture
  - 7 Inch LCD, Built In Camera, Touch Screen, Remote Controller
  - External Video RCA Input/Output, S-Video Out and 3.5mm Audio Input/Output
  - 2-ports 10/100Mbps Fast Ethernet and 1-port RS-232C Console
  - 1-Port FXO PSTN Interface
  - Including Network Cable Set & Ext. Power Supply, etc.
- **Built-in APOS Internetworking Software for AP-VP280**
- **Including 1 Year Hardware Warranty**
- **Product Documents**
  - Install and Operation Guide (PDF)
- **Pricing**
  - AddPac Technology Regional Sales Manager
  - Authorized Sales and Marketing Representatives
  - Please Contact [www.addpac.com](http://www.addpac.com)



# Thank you!

**AddPac Technology Co., Ltd.**  
Sales and Marketing

Phone +82.2.568.3848 (KOREA)

FAX +82.2.568.3847 (KOREA)

E-mail [sales@addpac.com](mailto:sales@addpac.com)