

AP-PTS3000™ PTT Server

High-performance Next Generation IP based Push-to-Talk
Solution

Preliminary Product Overview

(Without notice, following described technical spec. can be changed)



AddPac

AddPac Technology

2010, Sales and Marketing

Contents

- Product Features
- Hardware Specification
- Software Service
- IP based PTT Network Diagram
- IP based PTT Call Service Examples
- Network Service and Features
- Ordering Information

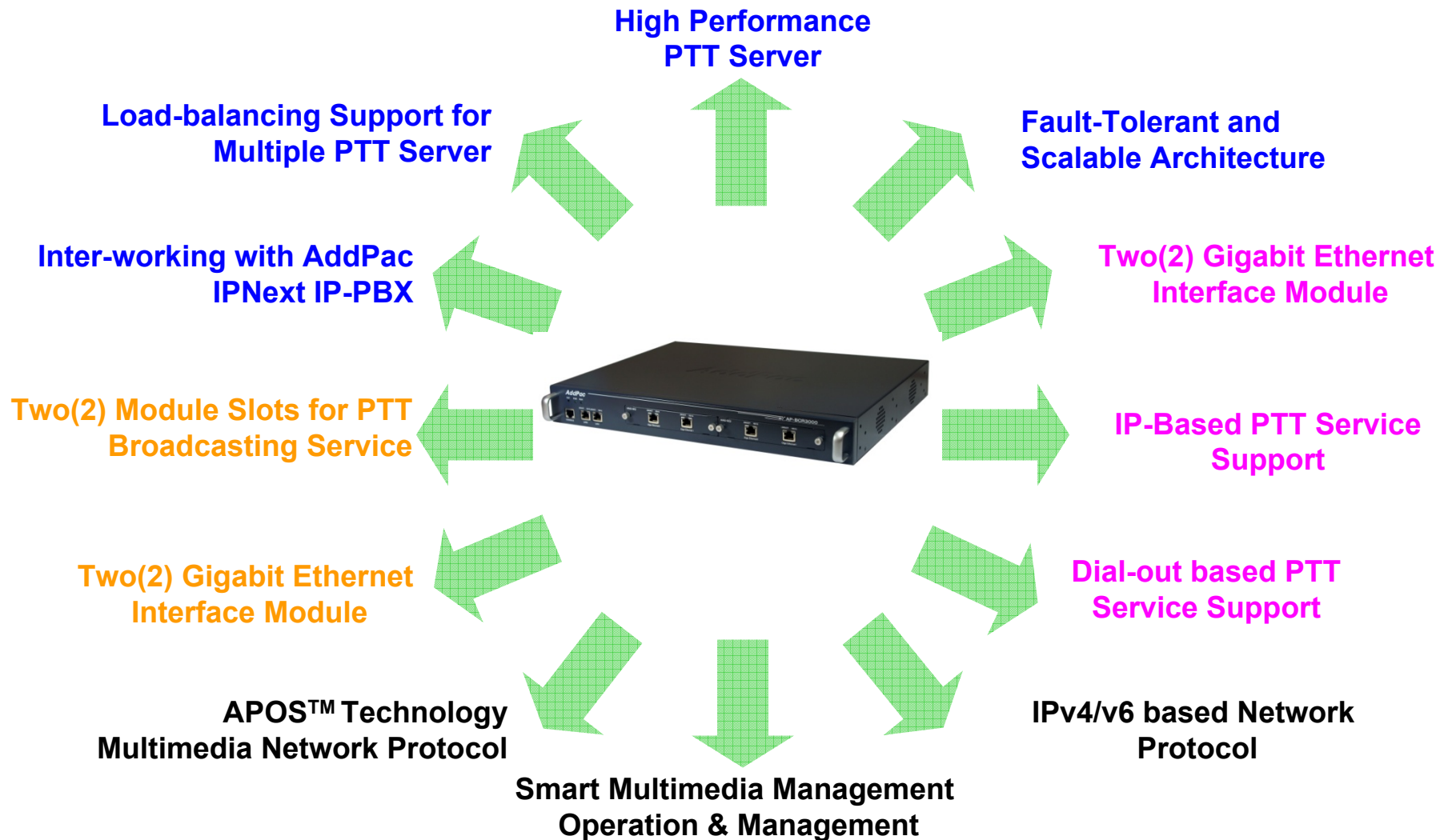
Product Features

AP-PTS3000 PTT Server

- Two(2) Module Slots for PTT Broadcasting Service
- Two(2) Gigabit Ethernet Interface Module
- IP based PTT Service Support
- Dial-Out based PTT Service Support
 - Multi-Session , Multi-Group
 - PtP (Point-to-Point) Service
- Emergency PTT Service Support
- IP-PBX Interworking Service
- IP Terminal Interworking Service (Wi-Fi Phone, IP Phones)
- Advanced Networking Protocols
- Firmware Upgradeable Architecture
- PTT Solution with Outstanding Network Service Capability

Product Highlights

AP-PTS3000 PTT Server

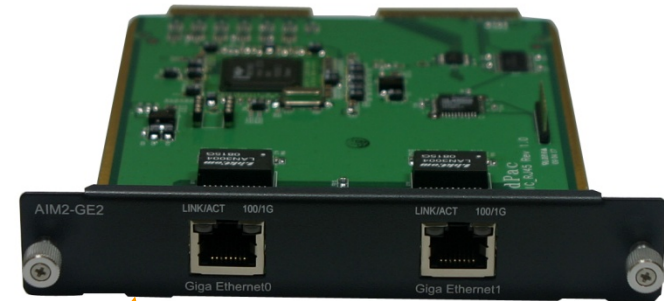


Hardware Specification

AP-PTS3000 PTT Server

64bit
CPU

- 64-Bit CPU Computing Power
- Main Chassis
 - Two(2) 10/100 Fast Ethernet Interface
 - One(1) RS-232C Console(RJ45)
- Network Module (AP-AIM2-GE2)
 - Two(2) Port Gigabit Ethernet Module



One(1) RS232C Port for CLI



Two(2) Fast Ethernet for management

Two(2) Gigabit Ethernet for PTT Service

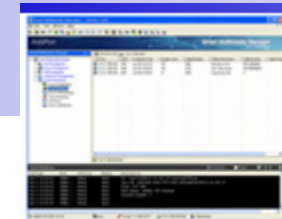
AddPac

www.addpac.com

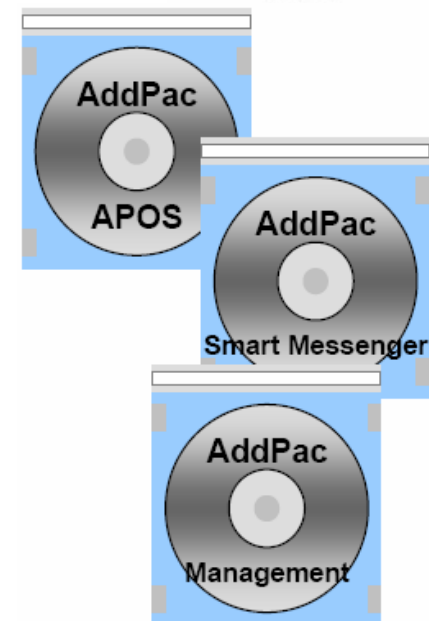
Software Service

AP-PTS3000 PTT Server

- Built-in AddPac APOS Interworking Software
 - Scalability, Functionality, and Stability Features
 - Advanced PTT Server Features
 - 1 : 1 PTT
 - Group PTT
 - Emergency PTT with Alarm Notification
- Firmware Upgradable Architecture
- Industry Standard Network Protocol Features
- User Friendly Management Features
 - Smart Multimedia Manager for Operation & Management



SMM



[SMM] User Friendly Management

AP-PTS3000 PTT Server

Easy Configuration Tool Support

Group Properties

General

Group Name: Push-to-Talk#8000-NightGuards

Description: Push-to-Talk conference session for night guards

Number: 4050

Partition: N/A

Audio Codec Class: default

Group Priority: 3 (Zero is high priority)

Max Session Idle Time: 60 seconds

Max Floor Hold Time: 30 seconds

Close on Chair Out

Ok Cancel

Easy Drag and Drop Configuration

Group Properties

General

Participants

Filter

Filter Name: Phone Number Rule: Begins with Word: Advanced Search Find

Number	Partition	User
1000		
1018		bd seong
2000		
2010		
2011		
2012		
2013		
2014		
2015		

Enter External Phone Number

Add

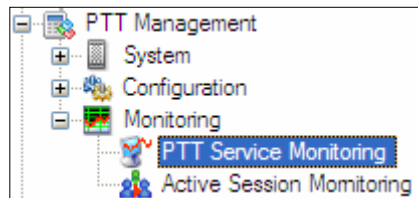
Number	Partition	User	Type
2010			Internal
2014			Internal

Ok Cancel

Easy PTT Session Creation & Various Option Support

[SMM] Active PTT Session Monitoring

AP-PTS3000 PTT Server



You can monitor the current resource usage of PTT servers through this window.

System Monitoring - PTT Server

IPNext180_TEST (172.16.12.99)

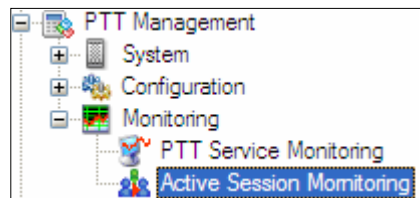
Active PTT Session

PTT Session

Active PTT Session History

Participant

Active Participant History



You can monitor the list of active PTT sessions and participants information of the sessions.

PTT Active Session Monitoring

172.16.12.99

Sessions

Name	Number	Start Time	Duration	No. of Participant
Conference #1000	1212	20100101-17:48:59	00:01:15	2

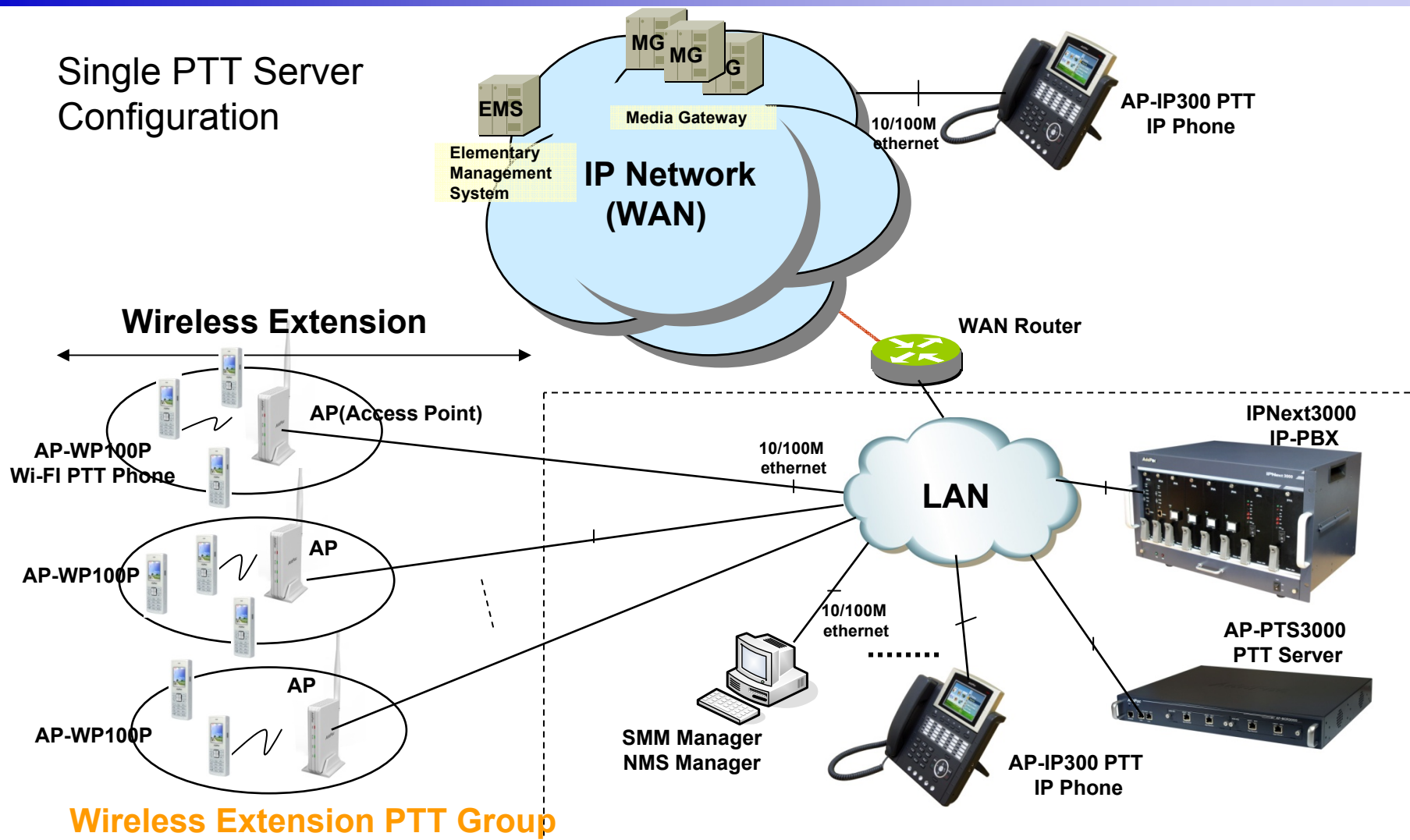
Participants

Participant Name	Phone Number	IP	Status
kn kim	7000	172.16.50.123	Joined
bd seong	1018	172.16.253.117	Joined

IP based PTT Network Diagram

AP-PTS3000 PTT Server

Single PTT Server Configuration



Wireless Extension PTT Group

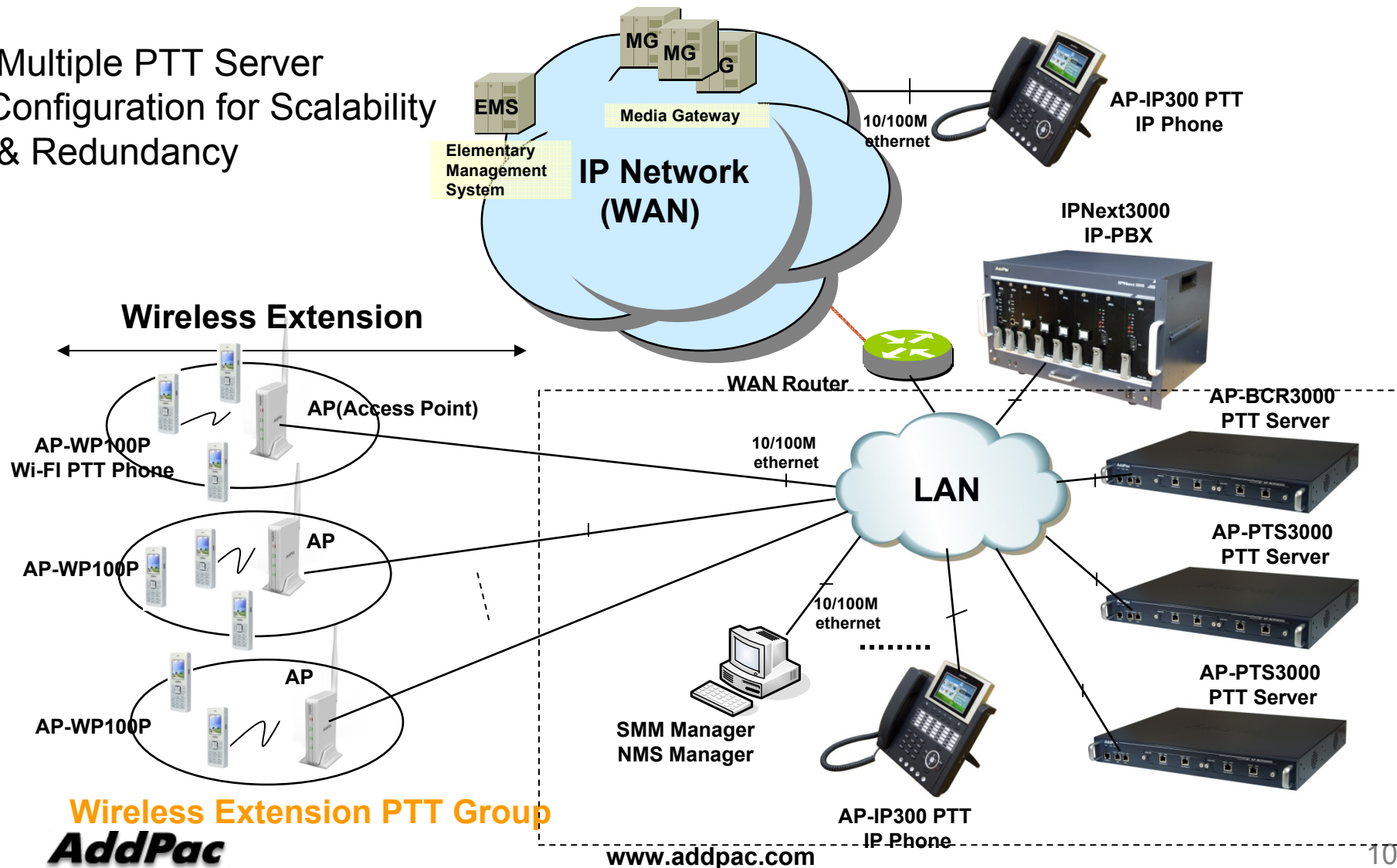
AddPac

www.addpac.com

IP based PTT Network Diagram

AP-PTS3000 PTT Server

Multiple PTT Server
Configuration for Scalability
& Redundancy

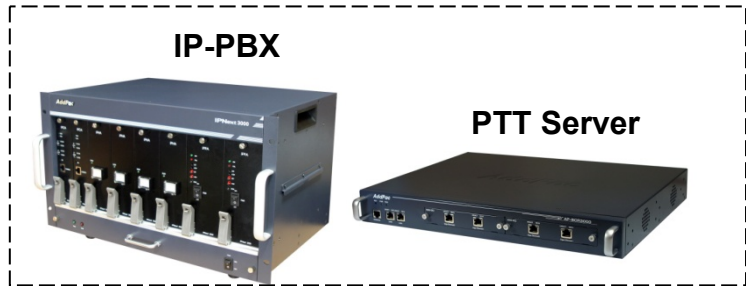


Wireless Extension PTT Group
AddPac

IP based PTT Call Service Examples(1/3)

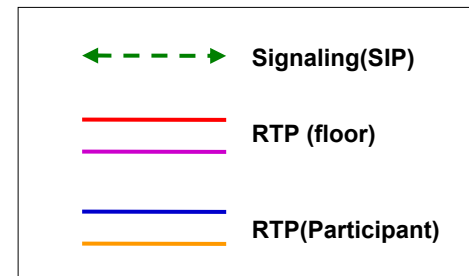
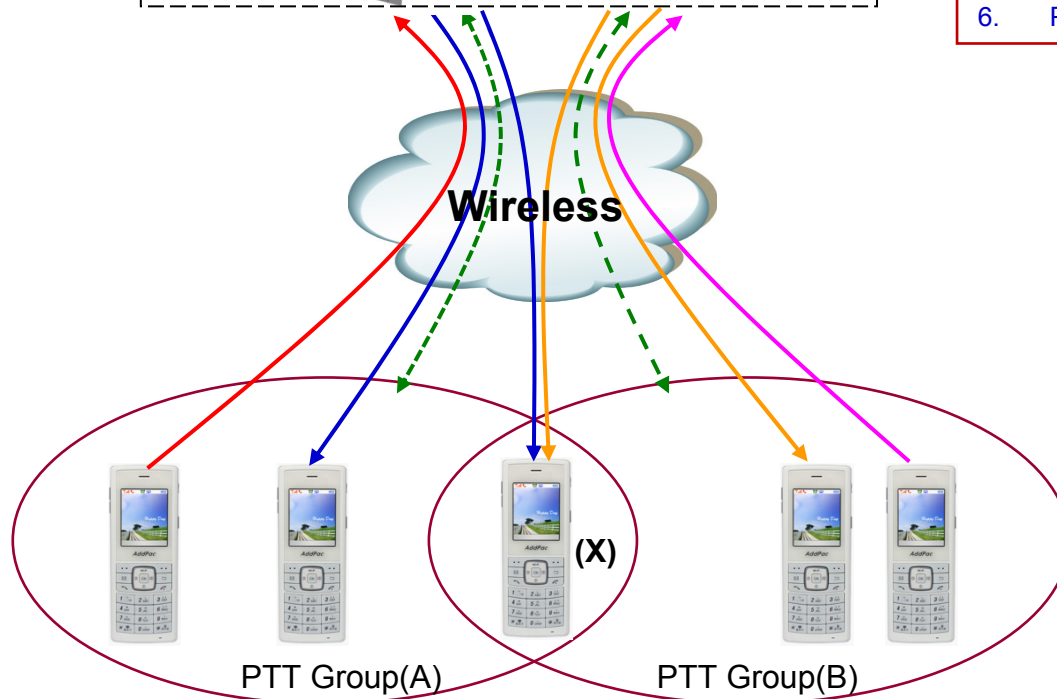
AP-PTS3000 PTT Server

Multi PTT Group Support



IP based WiFi PTT terminal supports two PTT sessions concurrently.

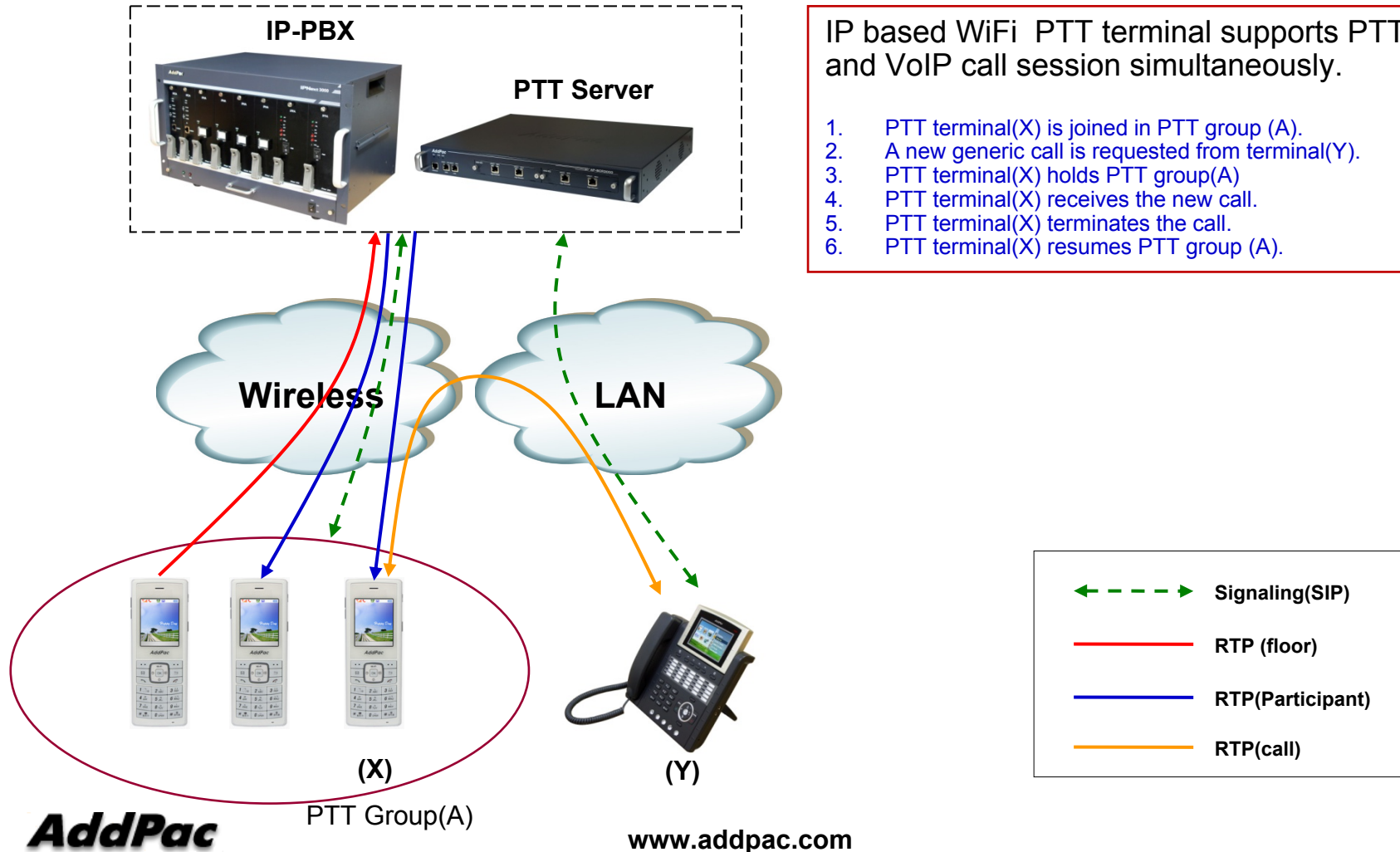
1. PTT terminal(X) is joined in PTT group(A).
2. A new PTT service is requested from PTT group (B).
3. PTT terminal(X) holds PTT group (A)
4. PTT terminal(X) joins to PTT group (B).
5. PTT terminal(X) terminates PTT group (B).
6. PTT terminal(X) resumes PTT group (A).



IP based PTT Call Service Examples(2/3)

AP-PTS3000 PTT Server

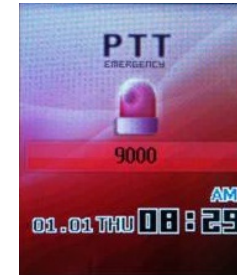
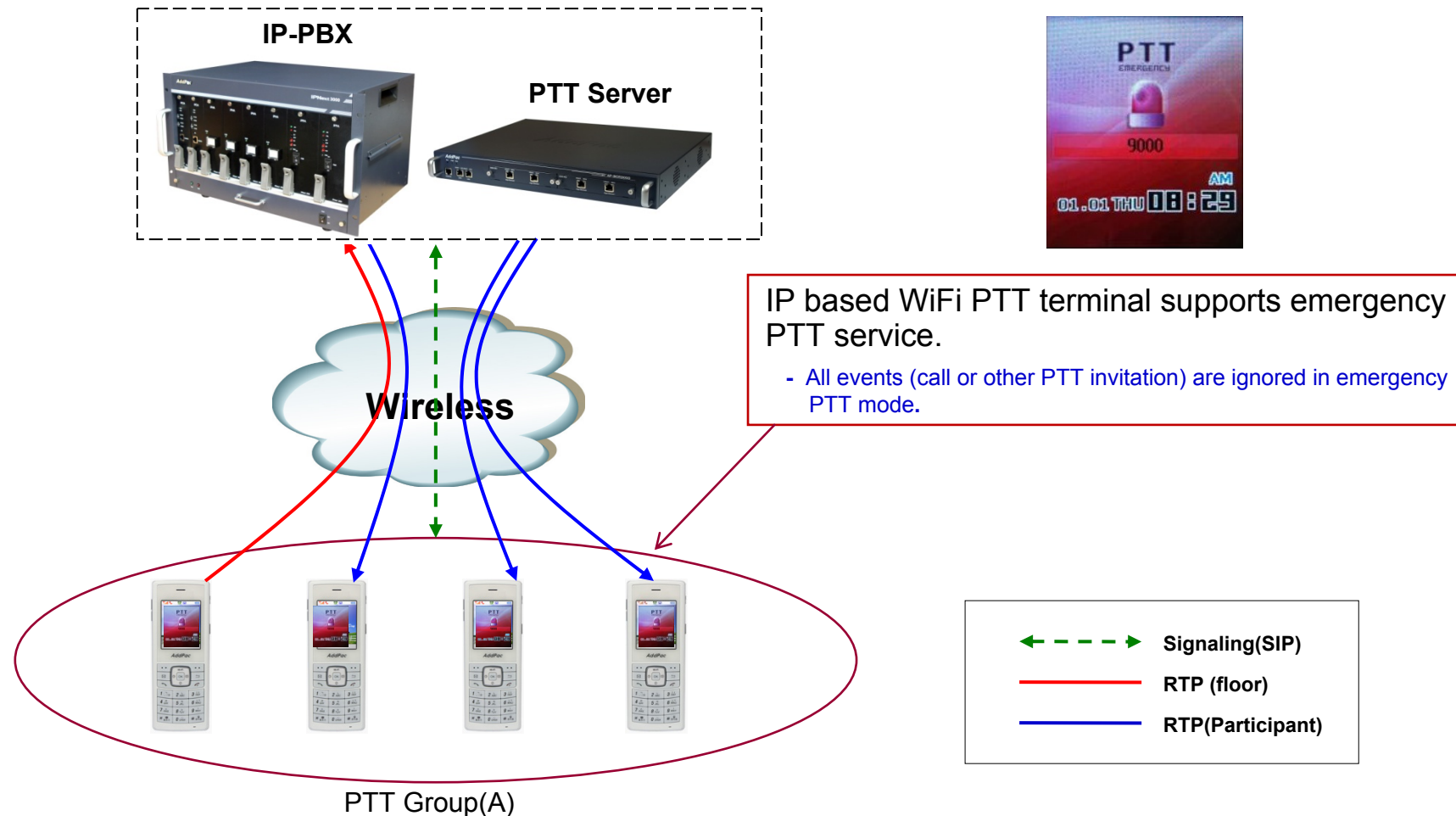
Simultaneous PTT and VoIP Call



IP based PTT Call Service Examples(3/3)

AP-PTS3000 PTT Server

Emergency PTT



Network Service and Features

AP-PTS3000 PTT Server

Basic Network Protocols

- ARP, IP, IPv6, TCP, UDP, ICMP, ICMPv6, SCTP, IGMP, MLD

Routing Protocol

- IPv4 : Static
- IPv6 : Static

Service Protocol

- FTP, Telnet, TFTP, DHCP Server/Relay, SNMP Server
- CDP (Cisco Discovery Protocol)
- DNS Resolver , DDNS(nsupdate)
- Bridge
- Syslog
- IP/IPv6 policy control (QoS)
- VPDN (Virtual Private Dial-up Network : L2TP Server)

Network Service and Features

AP-PTS3000 PTT Server

IPv4/IPv6 Interworking

- NAT/PAT for IPv4
- IP connect (formerly ip-share) and device cascade for IPv4
- IP/IP, IP/GRE tunneling
- NAT-PT
- 6to4, Autoconfig tunneling

IPv4 Address Configuration

- Fixed (Static)
- DHCP
- PPPoE

IPv6 Address Configuration

- Fixed (Static)
- EUI-64
- Autoconfig (Neighbor Advertisement and Solicitation)

Network Service and Features

AP-PTS3000 PTT Server

Miscellaneous

- Cisco Style CLI
- Standard & Extended IPv4/IPv6 Access List
- Multi-level User Account Management
- IP accounting
- fsh (Embedded file system shell)
- STUN Client
- etc

Network Service and Features

AP-PTS3000 PTT Server

SNMP MIBs

- MIB-II
- RMON MIBs (Statistics, History, Alarm, Hosts Group)
- RFC2465 Management Information Base for IP Version 6: Textual Conventions and General Group
- RFC2466 Management Information Base for IP Version 6: ICMPv6 Group
- RFC2452 IP Version 6 Management Information Base for the Transmission Control Protocol
- RFC2454 IP Version 6 Management Information Base for the User Datagram Protocol
- AddPac Enterprise MIBs
- etc

Ordering Information

- AP-PTS3000 PTT Server Hardware
 - AP-PTS3000 PTT Server Main Body
 - High-Performance 64 bit RISC CPU
 - Two(2) 10/100 Fast Ethernet Interface
 - Including Network Cable Set & Ext. Power Supply, etc
- Network Module (AP-AIM2-GE2)
 - Two(2) Port Gigabit Ethernet Module
- Built-in APOS Interworking Software for PTS3000
- Including 1 Year Hardware Warranty
- Product Documents
 - Install and Operation Guide (PDF)
- Pricing
 - AddPac Technology Regional Sales Manager
 - Authorized Sales and Marketing Representatives
 - Please Contact www.addpac.com



Thank you!

AddPac Technology Co., Ltd.
Sales and Marketing

Phone +82.2.568.3848 (KOREA)

FAX +82.2.568.3847 (KOREA)

E-mail sales@addpac.com