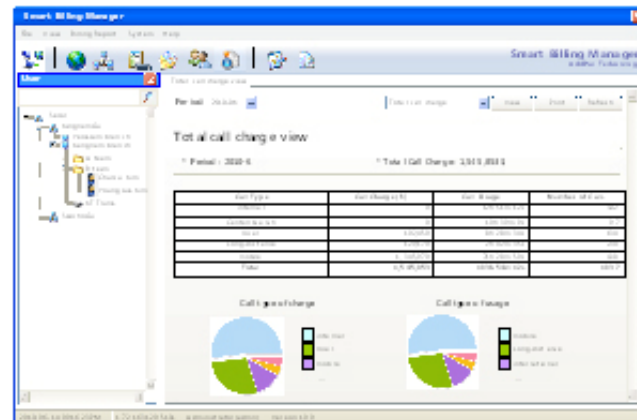




# Contents

- System Requirement
- Main Features
- System Configuration
- Site / Phone User / Department / Trunk Management
- Call Report Generation
- Call Report Notification
- System Performance Monitoring
- Access Level Management



# System Requirement

## Billing Server

- OS : Linux CentOS 5.4 or higher
- CPU : Intel Quad-Core 2.0 GHz / 1333 MHz FSB 2x4 MB cache
- Physical Memory : 8 GB
- HDD : 300G
- JRE ( Java Runtime Environment) 1.5.1 or Higher
- Database : PostgreSQL 8.1.11

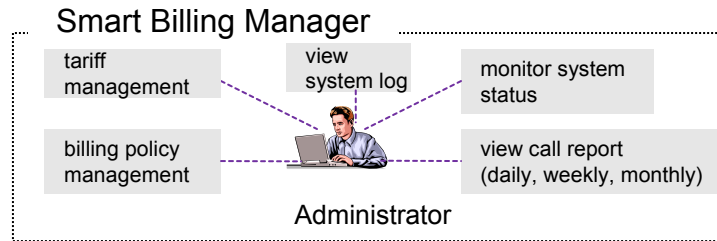
## Billing Manager

- Windows XP, Vista, Windows 7, windows Server2000/2003
- Microsoft Internet Explorer 6.0 or higher

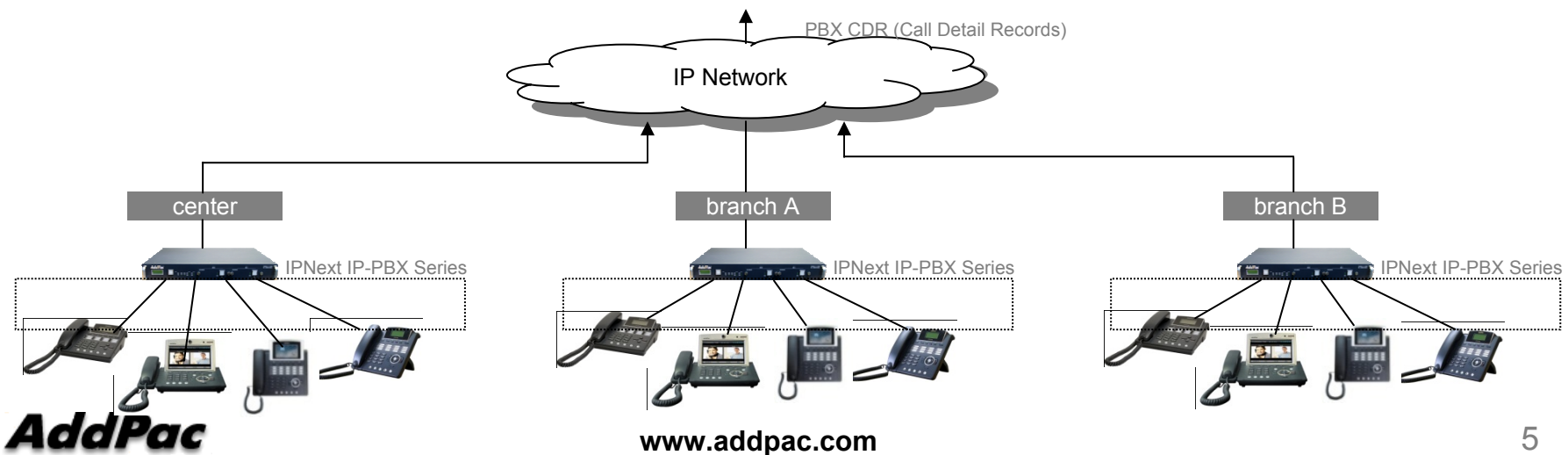
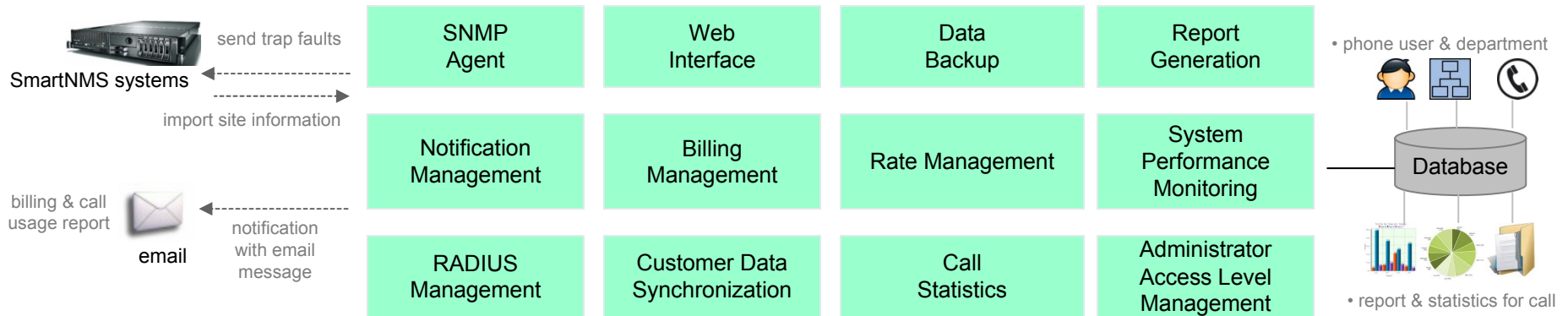
# Main Features

- Generate call reports based on daily / weekly / monthly and call type for site, trunk, department and phone user.
- Notify phone user or department of call report through email attachments with various policy.
- Import site / trunk / department / phone user data from NMS and PBX system.
- Manage different levels of administrator access.
- Monitor system performance for cpu utilization, memory and disk usage.
- Provide billing operating database backup with monthly based scheduling.

# System Configuration

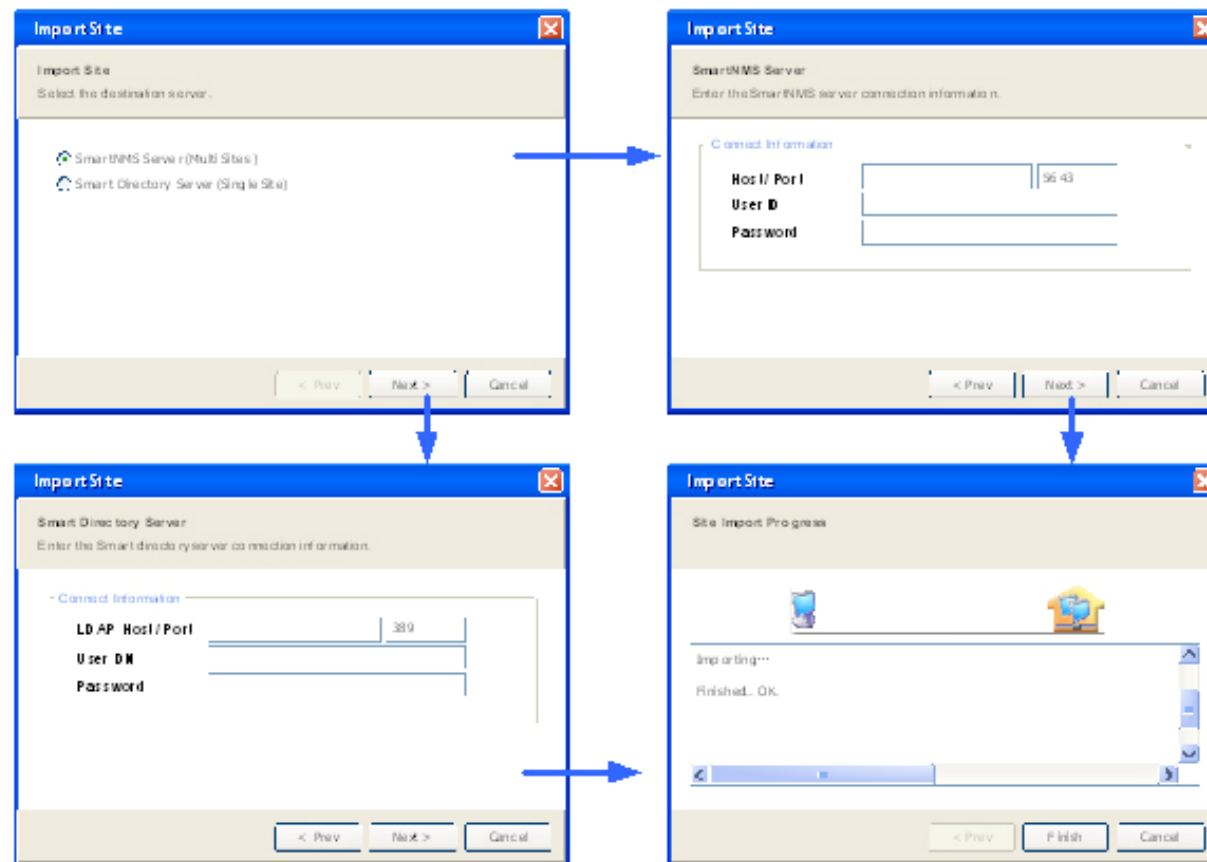


## Smart Billing Server



# Site / Trunk / Department / Phone User Management

- Import sites information from Smart NMS operating data.
- Get trunk, department and phone user from PBX data through import wizard.





# Call Report Generation

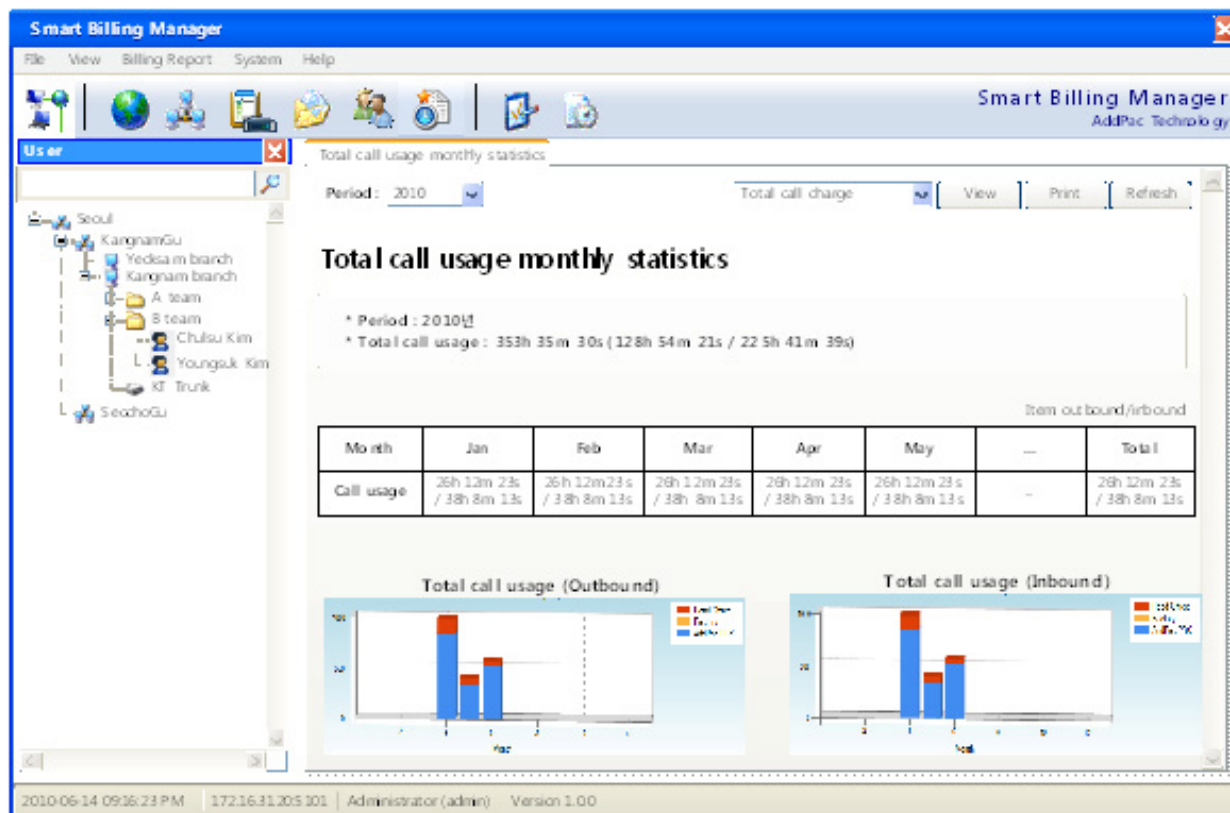
# Call Report Generation

- Total Call Usage Monthly Statistic
- Total Call Charge View
- Site Call Charge View
- Trunk Call Charge View
- Department Call Charge View
- User Call Charge View
- Total Call Charge Monthly Statistic
- Total Number of Call Monthly Statistic
- Total Call Type Monthly Statistic
- Incompletion Calls by reason for Monthly Statistics of total sites
- Call Charge View for each site
- Call Usage Monthly Statistic for each site
- Number of Calls Monthly Statistic for each site
- Call Charge Monthly Statistic for each site



# Call Report Generation

- Generate daily, weekly, monthly call usage report for site, trunk, department and phone users.
- Provide call usage with summary and chart type.



# Call Report Generation

Smart Billing Manager

File View Billing Report System Help

Smart Billing Manager  
Add Pac Technology

User

Seoul  
KangnamGu  
Yeoksam branch  
Kangnam branch  
A team  
B team  
Chulsu Kim  
Youngsuk Kim  
KT Trunk  
SechoGu

Total call charge view

Period: 2010-06 Total call charge View Print Refresh

**Total call charge view**

^ Period : 2010-6 ^ Total Call Charge : 1,545,853 \$

Call Type	Call Charge (\$)	Call Usage	Number of Calls
internal	0	12h 51m 12s	342
Center/branch	0	10h 39m 9s	97
local	102,450	8h 28m 34s	134
Long-distance	129,170	2h 42m 35s	234
mobile	1,345,970	71h 28m 50s	438
<b>Total</b>	<b>1,545,853</b>	<b>103h 54m 12s</b>	<b>1037</b>

Call type of charge

Call type of usage

2010-06-14 09:16:23 PM 172.16.31.20-5101 Administrator (admin) Version 1.0.0

# Call Report Generation

Smart Billing Manager

File View Billing Report System Help

Smart Billing Manager  
Add Pac Technology

User

Seoul  
KangnamGu  
Yeoksam branch  
Kangnam branch  
A team  
B team  
Chulsu Kim  
Youngsuk Kim  
KT Trunk  
Seochogu

Site call charge view

Period: 2010 Total call charge View Print Refresh

**Site call charge view**

^ Name : Yeoksam branch  
^ Period : 2010-6  
^ Call Charge : 1,545,853 \$

^ Location : Yeoksam 769-12  
^ Address : Yeoksam 1dong KangnamGu Seoul

Call Type	Call Charge (\$)	Call Usage	Number of Calls
internal	0	12h 51m 12s	342
Center/branch	0	10h 39m 9s	97
local	102,450	8h 28m 34s	134
Long-distance	129,170	2h 42m 35s	234
mobile	1,345,970	71h 28m 50s	438
<b>Total</b>	<b>1,545,853</b>	<b>103h 54m 12s</b>	<b>1037</b>

Call type of charge

Call type of usage

2010-06-14 09:16:23 PM 172.16.31.20-5101 Administrator (admin) Version 1.0.0



# Call Report Generation

**Smart Billing Manager**  
Add Pac Technology

Department call charge view

Period: 2010 Total call charge View Print Refresh

**Department call charge view**

^ Name : A team ^ Site : Yeoksam branch  
 ^ Period : 2010-6  
 ^ Call Charge : 1,545,853 \$

Call Type	Call Charge (\$)	Call Usage	Number of Calls
internal	0	12h 51m 12s	342
Center/branch	0	10h 39m 9s	97
local	102,450	8h 28m 34s	134
Long-distance	129,170	2h 42m 35s	234
mobile	1,345,970	71h 28m 50s	438
<b>Total</b>	<b>1,545,853</b>	<b>103h 54m 12s</b>	<b>1037</b>

**Call type of charge**

**Call type of usage**

2010-06-14 09:16:23 PM 172.16.31.20-5101 Administrator (admin) Version 1.0.0

# Call Report Generation

The screenshot displays the 'Smart Billing Manager' application interface. The main window is titled 'User call charge view' and shows a report for user 'Chulsu Kim (cskim)' for the period '2010'. The report includes a summary of call charges and usage, a detailed table of call types, and two pie charts illustrating the distribution of charges and usage by call type.

**User call charge view**

Period: 2010

Total call charge: [Dropdown]

Buttons: View, Print, Refresh

**User call charge view**

^ Name : Chulsu Kim (cskim)  
 ^ Phone Number : 1000  
 ^ Mobile : 010-2633-0000  
 ^ Call Charge : 1,545,853\$  
 ^ Email : cskim@customer.com  
 ^ Site : Yeoksam branch  
 ^ Department : B team

Call Type	Call Charge (\$)	Call Usage	Number of Calls
internal	0	12h 51m 12s	342
Center/branch	0	10h 39m 9s	97
local	102,450	8h 28m 34s	134
Long-distance	129,170	2h 42m 35s	234
mobile	1,345,970	71h 28m 50s	438
<b>Total</b>	<b>1,545,853</b>	<b>103h 54m 12s</b>	<b>1037</b>

**Call type of charge**

**Call type of usage**

2010-06-14 09:16:23 PM 172.16.31.205 101 Administrator (admin) Version 1.0.0

# Call Report Generation

The screenshot displays the 'Smart Billing Manager' application window. The main content area is titled 'Total call charge monthly statistics' and shows data for the year 2010. A summary box indicates a total call charge of 12,345,853 \$. Below this is a table with columns for months (Jan to May) and a 'Total' column, with values ranging from 928,483 to 1,145,900. A bar chart titled 'Total call charge of monthly' is also present, showing call charges for January, February, and March. The interface includes a navigation tree on the left, a menu bar at the top, and a status bar at the bottom.

**Total call charge monthly statistics**

Period: 2010 Total call charge View Print Refresh

\* Period : 2010  
\* Total call charge : 12,345,853 \$

Unit : \$

Month	Jan	Feb	Mar	Apr	May	...	Total
Call charge	1,120,490	928,483	971,392	1,072,345	1,145,900	...	12,345,853

**Total call charge of monthly**

Bar chart showing call charges for Jan, Feb, and Mar. Legend: Road 2 fee, Taxes, Add Pac, PER.

2010-06-14 09:16:23 PM 172.16.31.20-5101 Administrator (admin) Version 1.0.0

# Call Report Generation

**Smart Billing Manager**  
Add Pac Technology

File View Billing Report System Help

Smart Billing Manager  
Add Pac Technology

User

Seoul  
KangnamGu  
Yeoksam branch  
Kangnam branch  
A team  
B team  
Chulsu Kim  
Youngsuk Kim  
KT Trunk  
SechoGu

Total number of calls monthly statistics

Period: 2010 Total call charge View Print Refresh

**Total number of calls monthly statistics**

^ Period : 2010  
^ Total number of calls : 5768 (2234 / 3534)

구분 : 발신/착신

Month	Jan	Feb	Mar	Apr	May	...	Total
completion	123 / 456	123 / 456	123 / 456	123 / 456	123 / 456	..	2003 / 3100
incompletion	12 / 5	21 / 17	6 / 18	14 / 34	26 / 19	..	231 / 434
<b>Total</b>	<b>235 / 451</b>	<b>235 / 451</b>	<b>235 / 451</b>	<b>235 / 451</b>	<b>235 / 451</b>	..	<b>2234 / 3534</b>

Total number of calls (outbound)

Total number of calls (inbound)

2010-06-14 09:16:23 PM 172.16.31.20-5101 Administrator (admin) Version 1.0.0



# Call Report Generation

**Smart Billing Manager**  
Add Pac Technology

File View Billing Report System Help

User

Seoul  
KangnamGu  
Yeoksam branch  
Kangnam branch  
A team  
B team  
Chulsu Kim  
Youngsuk Kim  
KT Trunk  
SechoGu

Total call type monthly statistics

Period: 2010 Total call charge View Print Refresh

**Total call type monthly statistics**

^ Period : 2010  
^ Total number of calls : 33737 (11450 / 22287)

Item: outbound / inbound

Call Type	Jan	Feb	Mar	Apr	May	...	Total
internal	358 / 672	358 / 672	358 / 672	358 / 672	358 / 672	-	1358 / 1672
Center/branch	268 / 381	268 / 381	268 / 381	268 / 381	268 / 381	-	1268 / 1381
local	186 / 237	186 / 237	186 / 237	186 / 237	186 / 237	-	1186 / 1237
Long-distance	51 / 24	51 / 24	51 / 24	51 / 24	51 / 24	-	351 / 424
mobile	584 / 942	584 / 942	584 / 942	584 / 942	584 / 942	-	1584 / 1942
International	3 / 31	3 / 31	3 / 31	3 / 31	3 / 31	-	20 / 43
<b>Total</b>	<b>1450 / 2287</b>	<b>1450 / 2287</b>	<b>1450 / 2287</b>	<b>1450 / 2287</b>	<b>1450 / 2287</b>	-	<b>11450 / 22287</b>

Number of calls by all call type (outbound)

Number of calls by all call type (inbound)

2010-06-14 09:16:23 PM 172.16.31.20-5101 Administrator (admin) Version 1.0.0

# Call Report Generation

Smart Billing Manager

File View Billing Report System Help

Smart Billing Manager  
Add Pac Technology

User

Reason by incompletion calls monthly statistics of total sites

Period: 2010 Total call charge View Print Refresh

### Incompletion calls by reason for monthly statistics of total sites

^ Period : 2010  
^ Incompletion Calls : 9232 (3623 / 5609)

Item: inbo und/ou tbound

Month	Jan	Feb	Mar	Apr	May	...	Total
No Answer	1 / 2	0 / 0	2 / 3	1 / 1	0 / 0	...	1203 / 1234
Busy	234 / 123	123 / 456	234 / 123	123 / 456	234 / 123	...	123 / 456
Unallocated N.	0 / 0	2 / 0	1 / 5	0 / 0	0 / 0	...	123 / 456
Call Rejected	12 / 8	5 / 12	123 / 456	123 / 456	123 / 456	...	2234 / 3534
Network failed	5 / 1	0 / 0	0 / 0	1 / 0	0 / 3	...	16 / 12
Others	4 / 2	1 / 3	0 / 0	2 / 1	0 / 0	...	11 / 15
합계	256 / 141	261 / 470	358 / 593	252 / 913	357 / 582	...	3623 / 5609

Reason by incompletion calls of total sites (outbound)

Reason by incompletion calls of total sites (inbound)

2010-06-14 09:16:23 PM 172.16.31.205:101 Administrator (admin) Version 1.0.0

# Call Report Generation

Smart Billing Manager

File View Billing Report System Help

Smart Billing Manager  
Add Pac Technology

User

Seoul  
KangnamGu  
Yeoksam branch  
Kangnam branch  
A team  
B team  
Chulsu Kim  
Youngsuk Kim  
KT Trunk  
SechoGu

Site by call charge view

Period: 2010-6 Total call charge View Print Refresh

### Call charge view for each site

\* Period : 2010-6 \* Total Call Charge : 3,486,657 \$

Item: \$

Site	internal	Center/br...	local	long -dist..	mobile	Internation..	Total
Yeoksam branch	0	0	512,457	512,457	512,457	0	1,531,231
Kangnam branch	0	0	321,750	321,750	321,750	0	1,024,231
Samsung branch	0	0	302,450	302,450	302,450	0	939,200
Total	0	0	1,136,657	1,136,657	1,136,657	0	3,486,657

Site Call Charge (Top 10)

Call type charge

2010-06-14 09:16:23 PM 172.16.31.205 101 Administrator (admin) Version 1.0.0

# Call Report Generation

**Smart Billing Manager**  
AddPac Technology

File View Billing Report System Help

**User**

- Seoul
  - KangnamGu
    - Yeoksam branch
    - Kangnam branch
      - A team
      - B team
        - Chulsu Kim
        - Youngsuk Kim
      - KT Trunk
  - SeochoGu

Site by call usage monthly statistics

Period: 2010 Total call charge View Print Refresh

### Call usage monthly statistics for each site

Period : 2010  
All call usage : 353h 35m 30s (128h 54m 21s / 225h 41m 39s)

Item: outbound/inbound

Site	Jan	Feb	Mar	Apr	May	—	Total
Yeoksam branch	26h 12m 23s / 38h 8m 13s	26h 12m 23s / 38h 8m 13s	26h 12m 23s / 38h 8m 13s	26h 12m 23s / 38h 8m 13s	26h 12m 23s / 38h 8m 13s	--	26h 12m 23s / 38h 8m 13s
Kangnam branch	26h 12m 23s / 38h 8m 13s	26h 12m 23s / 38h 8m 13s	26h 12m 23s / 38h 8m 13s	26h 12m 23s / 38h 8m 13s	26h 12m 23s / 38h 8m 13s	--	26h 12m 23s / 38h 8m 13s
Samsung branch	26h 12m 23s / 38h 8m 13s	26h 12m 23s / 38h 8m 13s	26h 12m 23s / 38h 8m 13s	26h 12m 23s / 38h 8m 13s	26h 12m 23s / 38h 8m 13s	--	26h 12m 23s / 38h 8m 13s
<b>Total</b>	26h 12m 23s / 38h 8m 13s	26h 12m 23s / 38h 8m 13s	26h 12m 23s / 38h 8m 13s	26h 12m 23s / 38h 8m 13s	26h 12m 23s / 38h 8m 13s		26h 12m 23s / 38h 8m 13s

Site by call usage - Top 10 (outbound)

Site by call usage - Top 10 (inbound)

2010-06-14 09:16:23 PM 172.16.31.205:101 Administrator (admin) Version 1.0.0

# Call Report Generation

**Smart Billing Manager**  
Add Pac Technology

File View Billing Report System Help

Site by number of calls monthly statistics

Period: 2010 Total call charge View Print Refresh

**Number of calls monthly statistics for each site**

^ Period : 2010  
^ All number of calls : 5768 (2234 / 3534)

Item: outbound/inbound

Site	Jan	Feb	Mar	Apr	May	...	Total
Yeoksam bra..	123 / 456	123 / 456	123 / 456	123 / 456	123 / 456	..	1203 / 1234
Kangnam bra..	123 / 456	123 / 456	123 / 456	123 / 456	123 / 456	..	123 / 456
Samsung bra..	123 / 456	123 / 456	123 / 456	123 / 456	123 / 456	..	123 / 456
<b>Total</b>	123 / 456	123 / 456	123 / 456	123 / 456	123 / 456		2234 / 3534

Site by number of calls - Top 10 (outbound)

Site by number of calls - Top 10 (inbound)

2010-06-14 09:16:23 PM 172.16.31.205 101 Administrator (admin) Version 1.0.0

# Call Report Generation

Smart Billing Manager

File View Billing Report System Help

Smart Billing Manager  
Add Pac Technology

User

Seoul  
KangnamGu  
Yeoksam branch  
Kangnam branch  
A team  
B team  
Chulsu Kim  
Youngsuk Kim  
KT Trunk  
Seochogu

Site by call charge monthly statistics

Period: 2010 Total call charge View Print Refresh

### Call charge monthly statistics for each site

^ Period : 2010  
^ All call charge : 43,480,920\$

Unit : \$

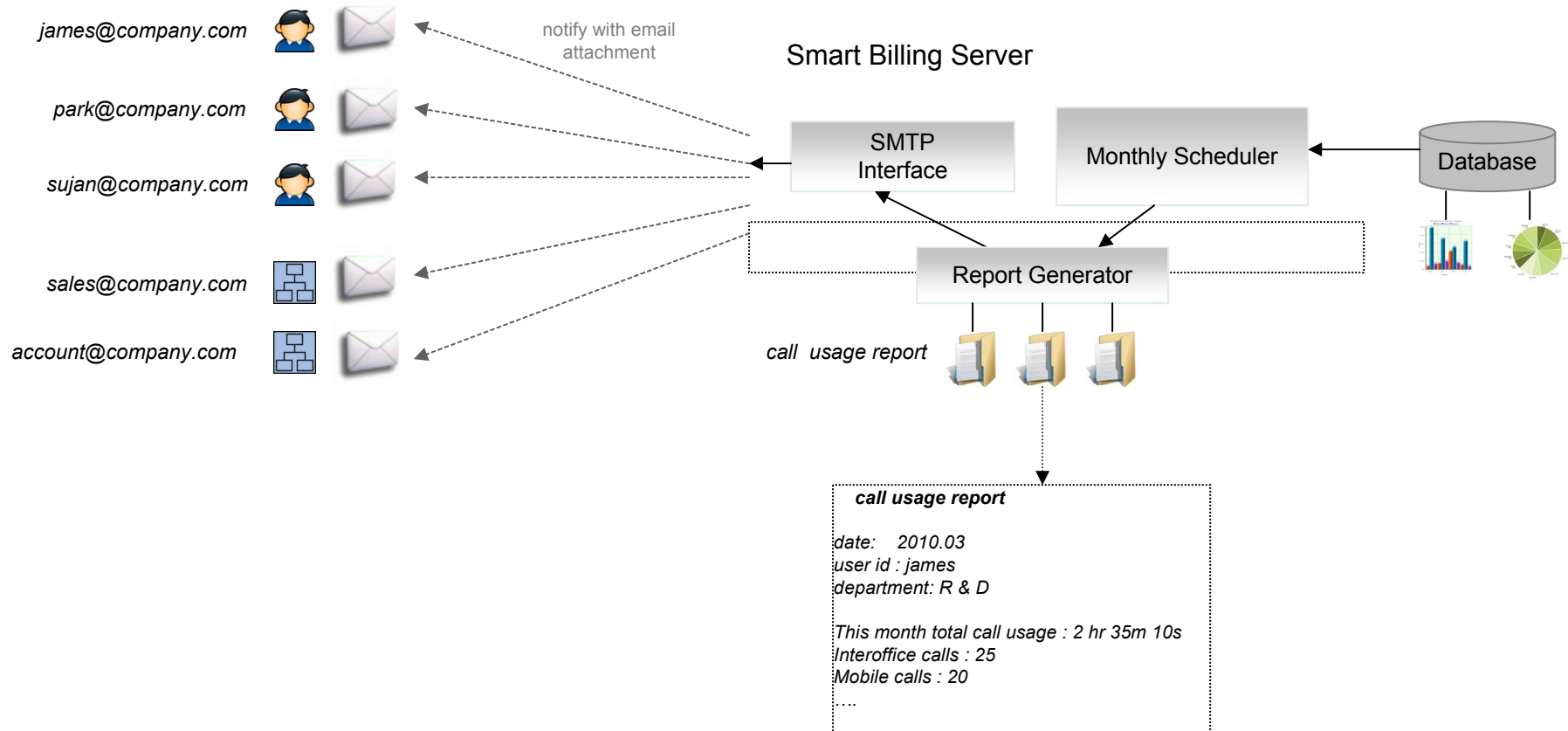
Site	Jan	Feb	Mar	Apr	May	...	Total
Yeoksam bra..	1,234,900	1,234,900	1,234,900	1,234,900	1,234,900	...	19,234,900
Kangnam bra..	1,087,230	1,087,230	1,087,230	1,087,230	1,087,230	...	20,643,000
Samsung bra..	962,000	962,000	962,000	962,000	962,000	...	962,000
<b>Total</b>	<b>3,182,630</b>	<b>3,182,630</b>	<b>3,182,630</b>	<b>3,182,630</b>	<b>3,182,630</b>		<b>43,480,920</b>

Site by call charge - Top 10

2010-06-14 09:16:23 PM 172.16.31.205:101 Administrator (admin) Version 1.0.0

# Call Report Notification

- Notify phone user or department with email attachment for call usage report.
- Manage notification list such as all, phone user or department.

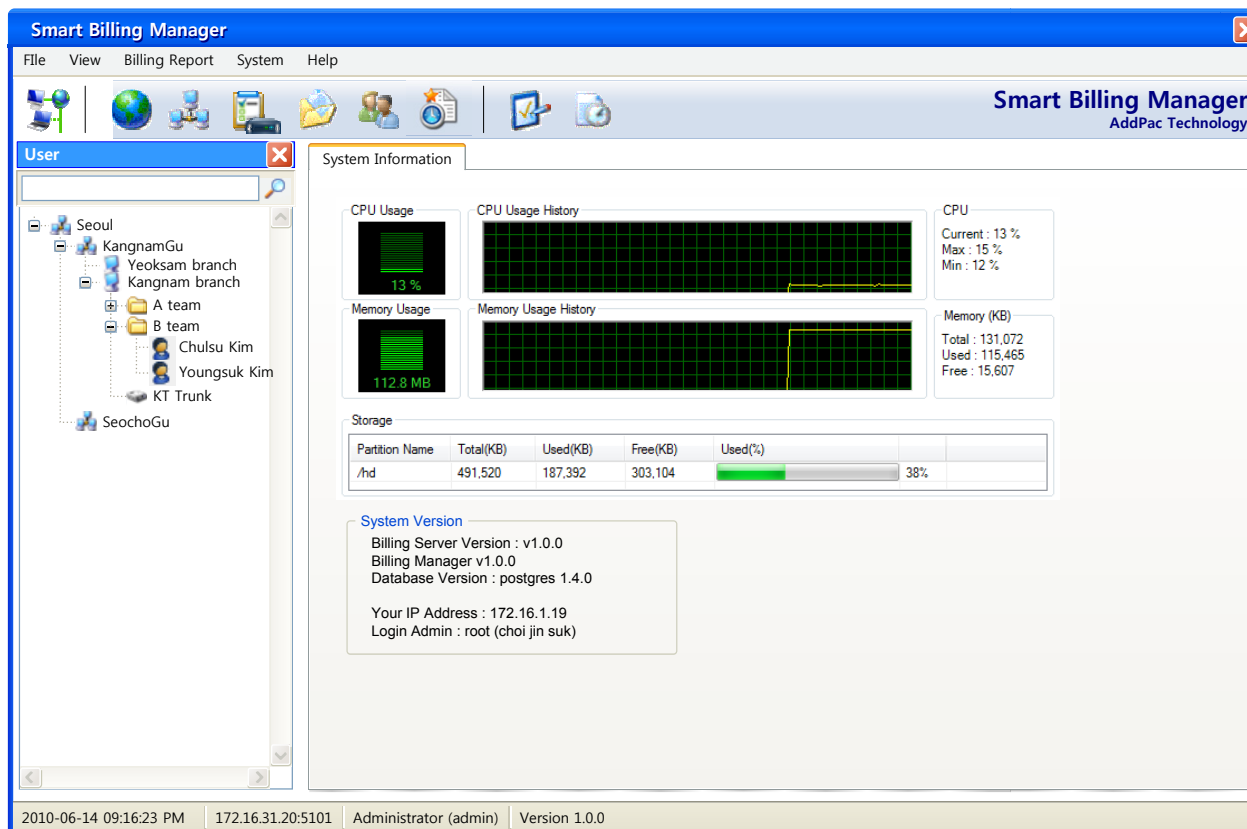






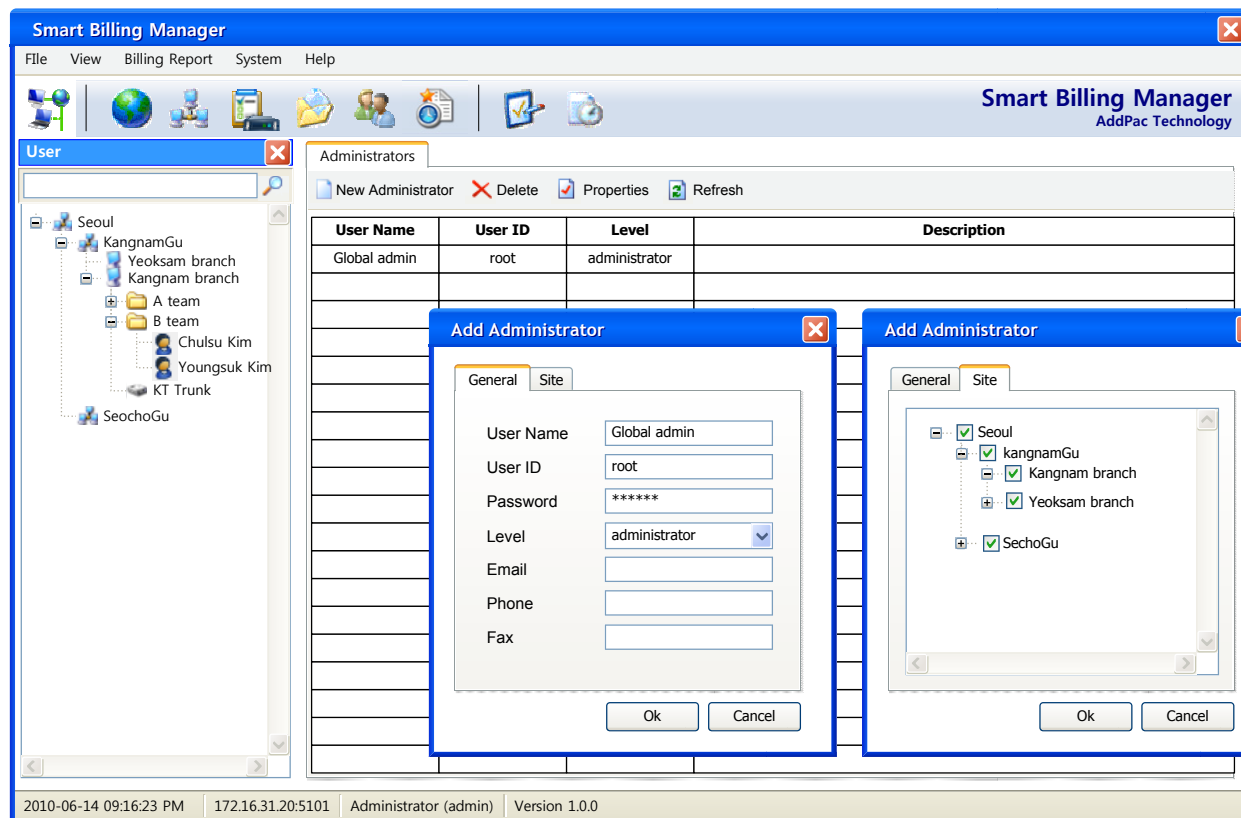
# System Performance Monitoring

- Monitor system performance such as CPU utilization, memory usage and disk space.



# Administrator Access Level Management

- Provide different levels of administrator access in view and menus.
- Manage multiple site and assign resources to administrator.









# Thank you!

**AddPac Technology Co., Ltd.**  
Sales and Marketing

Phone +82.2.568.3848 (KOREA)

FAX +82.2.568.3847 (KOREA)

E-mail [sales@addpac.com](mailto:sales@addpac.com)