

AP-PTZ1000

Camera PTZ Controller

High-performance Network DVR Solution



Preliminary Product Overview
(Without notice, following described technical spec. can be changed)

AddPac

AddPac Technology

Sales and Marketing



Contents

- Product Overview
- Product Highlight
- Hardware Specification
- Software Service
- Network Service and Features
- Network Application Service
- Ordering Information



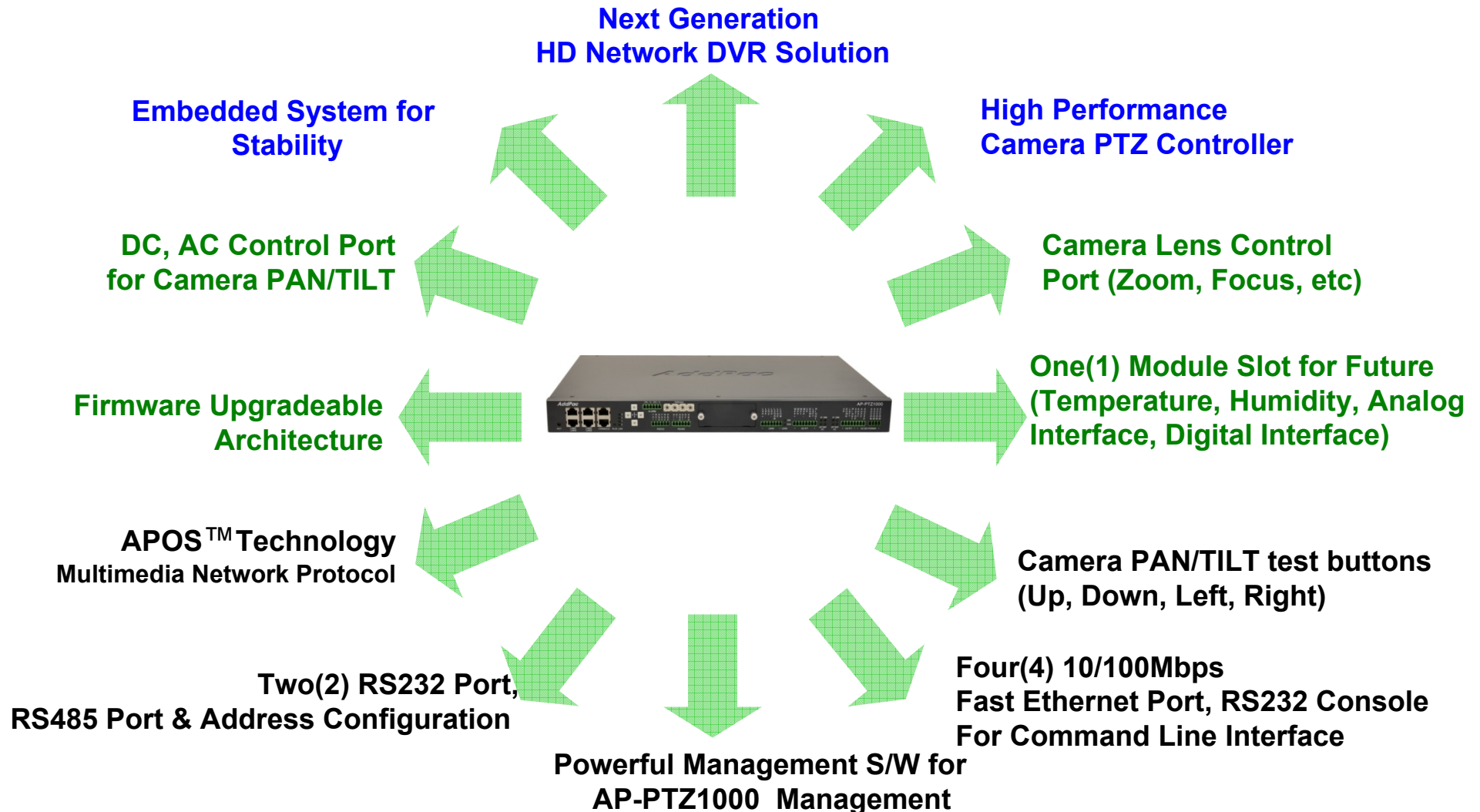
Product Overview

AP-PTZ1000 Camera PTZ Controller

- High Performance Camera PTZ Control Service Features
- Four(4) Fast Ethernet Interface Support
- Two(2) RS232 Control Port Support
- One(1) RS232C Interface for Command Line Interface
- Alarm Input Interface
- RS485 Control Port & Address Configuration Interface
- Reserved Module Slot for Measuring Temperature&Humidity, Analog Interface(2 Port), Digital Interface(2)
- Camera PAN/TILT Test Button Support (Up, Down, Left, Right)
- Camera Lens Control Port (Zoom, Focus)
- DC Control Port for PAN/TILT
- AC Control Port for PAN/TILT
- Firmware Upgradeable Architecture
- Camera PTZ Solution with Outstanding Network Service Capability
- Internal Power Supply

Product Highlights

AP-PTZ1000 Camera PTZ Controller



Hardware Specification

AP-PTZ1000 Camera PTZ Controller

RISC
CPU

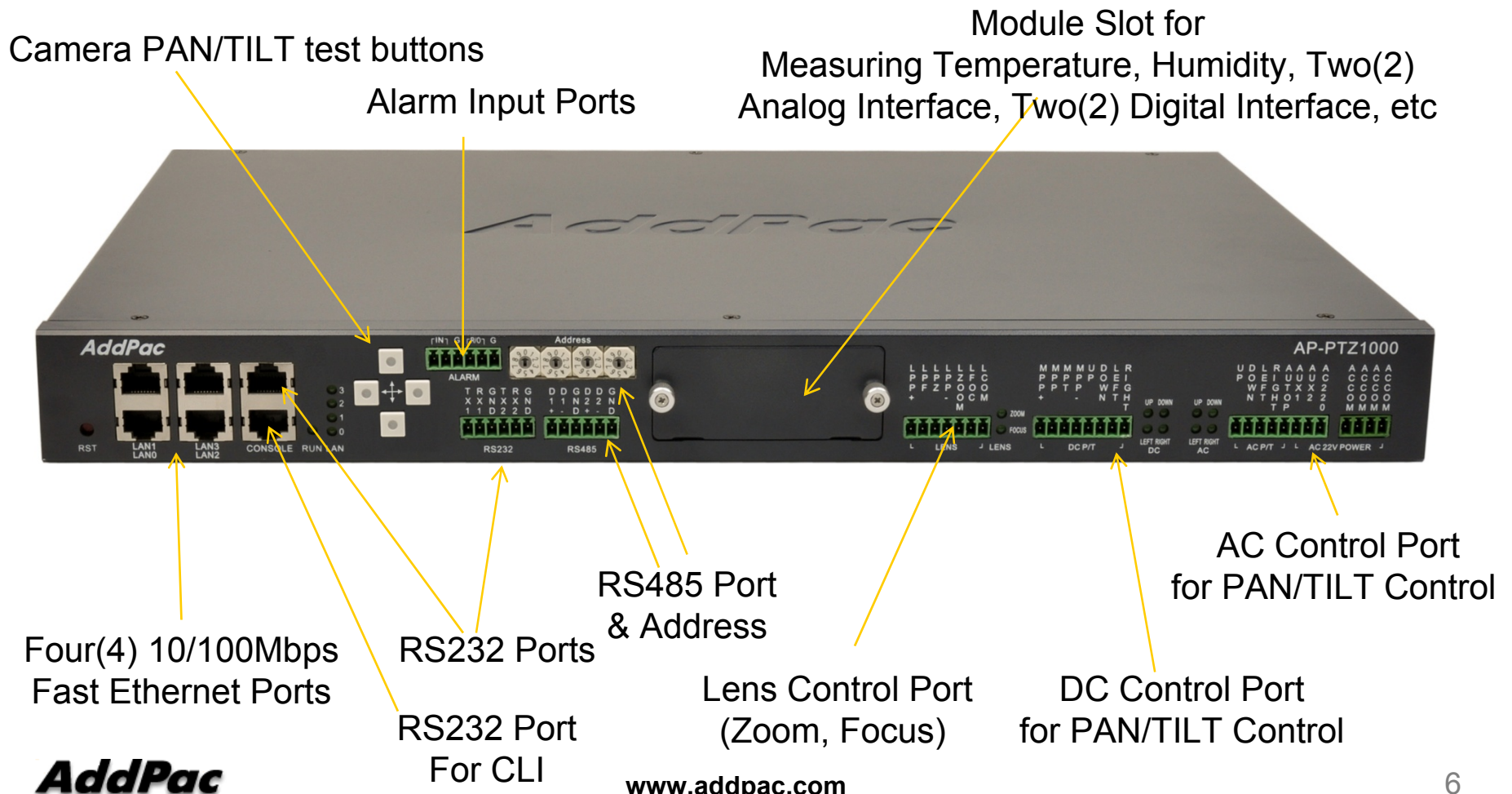
- **RISC + Video Processor Computing Power**
- **Main Chassis**
 - Network Interface
 - Four(4) 10/100Mbps Fast Ethernet
 - Camera PTZ Control
 - AC Control Port for PAN/TILT
 - DC Control Port for PAN/TILT
 - Lens Control (ZOOM, FOCUS, etc)
 - One(1) RS-232 Console Interface (RJ45) for Command Line Interface
 - One(1) RS485 Control Interface & Address Configuration Interface for Future
 - Two(2) RS232 Control Interface
 - Alarm Input Port for Future
 - Module Slot for Future (temperature, humidity, Analog Interface, Digital Interface, etc)
 - Camera PAN/TILT Test Button(Up, Down, Left, Right)

Hardware Specification

AP-PTZ1000 Camera PTZ Controller

RISC
CPU

AP-PTZ1000 Front Side View



AddPac

www.addpac.com

Hardware Specification

AP-PTZ1000 Camera PTZ Controller

RISC
CPU

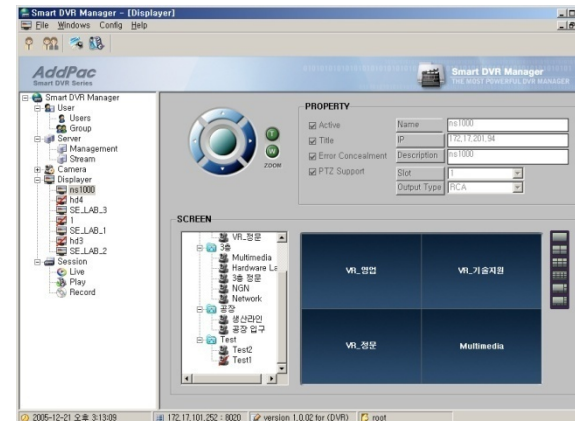
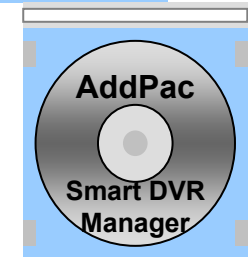
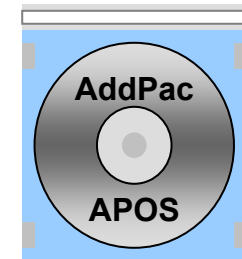
AP-PTZ1000 Back Side View



Software Service

AP-PTZ1000 Camera PTZ Controller

- **Built-in AddPac APOS Internetworking Software**
 - Scalability, Functionality, and Stability Features
 - Advanced Camera PTZ Control Service Features
- **Firmware Upgradeable Architecture**
- **Industry Standard Network Protocol Features**
- **Highly User Friendly Management Features**
 - Smart DVR Manager
 - Telnet or RS-232C based Command Line Interface



Network Service and Features

AP-PTZ1000 Camera PTZ Controller

Basic Network Protocols

- ARP, IPv4, TCP, UDP, ICMP, SCTP, IGMP, MLD

Routing Protocol

- IPv4 : Static

Service Protocol

- FTP, Telnet, TFTP, DHCP Server/Relay, SNMP Server
- CDP (Cisco Discovery Protocol)
- DNS Resolver , DDNS(nsupdate)
- Bridge
- Syslog

IPv4 Address Configuration

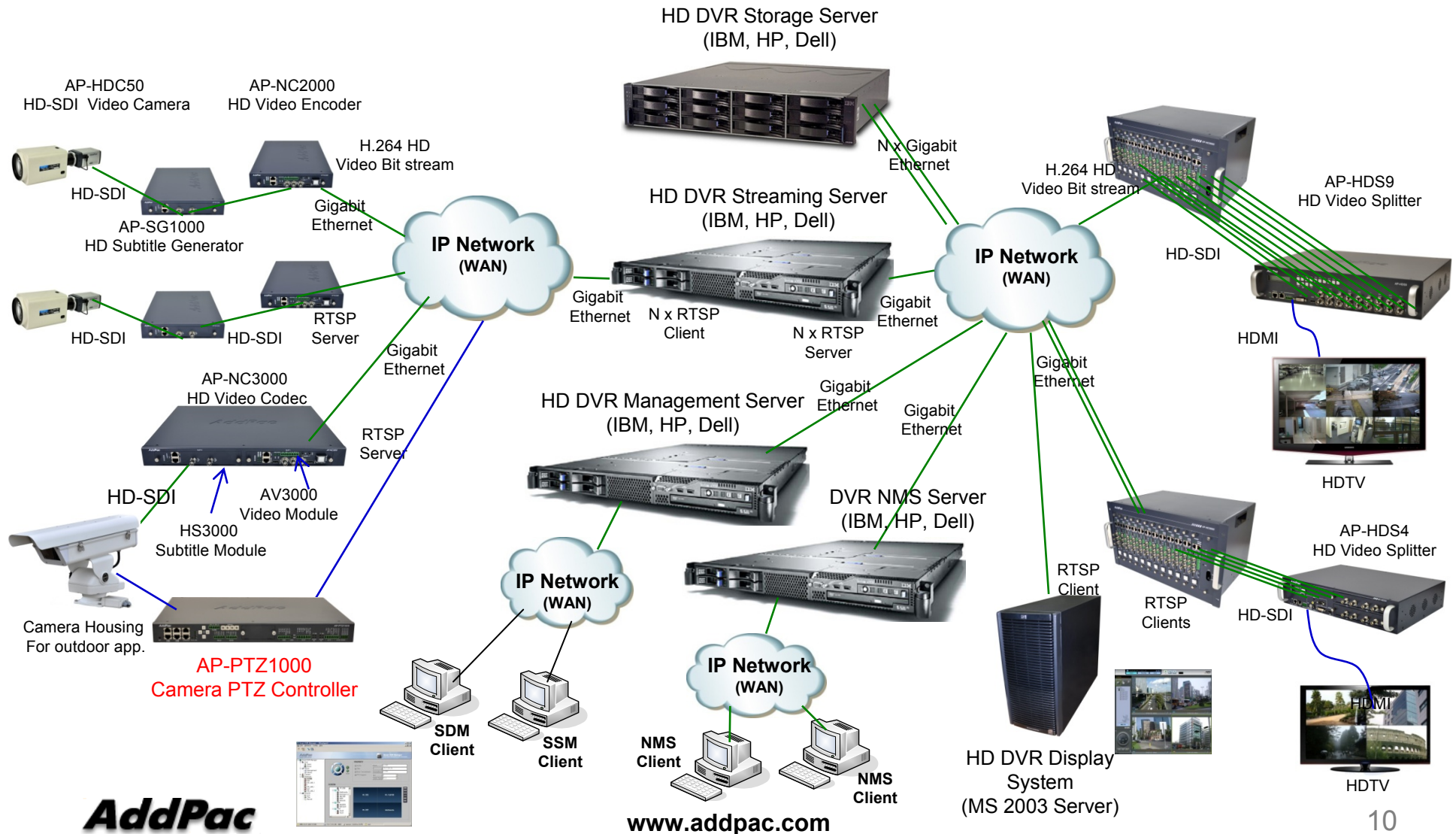
- Fixed (Static)
- DHCP
- PPPoE

Miscellaneous

- Standard & Extended IPv4 Access List
- Multi-level User Account Management
- IP accounting

Network Application Diagram

AP-PTZ1000 Camera PTZ Controller



Ordering Information

- **AP-PTZ1000 Camera PTZ Controller Hardware**
 - AP-PTZ1000 Main Body
 - Including Network Cable Set & Power Supply Cable, etc.
- **Built-in APOS Internetworking Software for AP-PTZ1000**
- **Including 1 Year Hardware Warranty**
- **Product Documents**
 - Install and Operation Guide (PDF)
- **Pricing**
 - AddPac Technology Regional Sales Manager
 - Authorized Sales and Marketing Representatives
 - Please Contact www.addpac.com



Thank you!

AddPac Technology Co., Ltd.
Sales and Marketing

Phone +82.2.568.3848 (KOREA)

FAX +82.2.568.3847 (KOREA)

E-mail sales@addpac.com