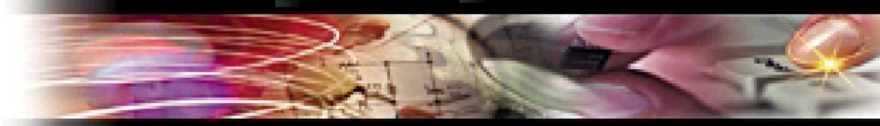


AP2850 Multiservice Router

High-performance, Multiservice Routing Solution



PassFinder AP2850 Multiservice Router

PassFinder AP2850 ATM router provides high-performance ATM-to-LAN solution with IP-routing connectivity for small enterprise, government and other public offices as well as Internet game room and Internet based cyber apartment. This router guarantees best-efficient line utilization as multi channel E1/T1 (up to 4E1/T1) or IMA ATM Interface is used. And this equipment is designed as form of One(1) network interface module slot and Four(4) multiservice I/O slots, so this router system can be used in various WAN environment using network interface cards according to network configuration. Also mutliservice I/O slots provide the various multimedia solutions such as VoIP and Video Conference. In addition, A2850 router supports various WAN protocols such as Frame-Relay, HDLC, IPOA, PPPoA, H.323 including Static, RIP v1/2, OSPF v2 routing protocols and network management features such as SNMP MIB v2, web based management, CLI, etc. PassFinder AP2850 router is designed to have users the greatest satisfaction with remarkable price versus performance.

One(1) Network Interface Slot

- 2-Port 10/100Mbps Ethernet, 2-Port Async Interface, 4-Port Multiple E1/T1 ATM
- 2-Port 10/100Mbps Ethernet, 2-Port Async Interface, 1-Port E1/T1 ATM
- 2-Port 10/100Mbps Ethernet, 2-Port Async Interface

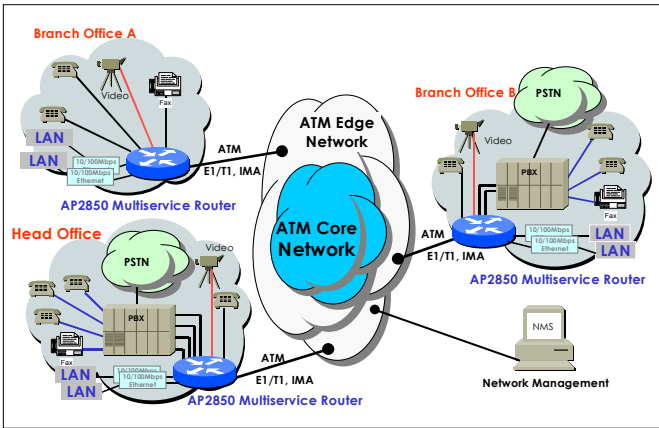
Four(4) Multiservice I/O Slots

- 4-Port FXS Voice Processing Module
- 4-Port FXO Voice Processing Module,
- 4-Port E&M Voice Processing Module
- 2-Port FXO & 2-Port FXS Voice Processing Module
- 1-Port PBX Digital E1/T1 ISDN-PRI Module
- 2-Port PBX Digital E1/T1 ISDN-PRI Module
- 1-Port V.35 Frame-Relay Network Module

Product Highlights

- High-end 64bit RISC Microprocessor Architecture
- High-performance Network Modular Architecture
 - One(1) Network Interface Slot
 - Four(4) Multiservice I/O Slots
- Standard ATM-to-LAN Router for Data Networking Applications
- Standard ATM-to-LAN VoIP Router for Data Networking Applications
- Multi-protocol Routing Solutions between ATM and LAN Access
- FXS, FXO, E&M and Digital E1/T1 Voice I/O Module
- V.35 Interface Multiservice Module for Frame Relay-ATM Interworking
- Multi-protocol Routing Solutions between WAN and LAN Access with H.323 based VoIP Protocol
- ITU-T H.323 v3 VoIP Protocol with ITU-T H.235 Security Feature
- SIP protocol support compliant with IETF RFC3261 (or RFC2543)
- H.323 and SIP dual stack support
- G.723.1, G.729A, G.711 Voice Compressions
- Support Voice Processing Features
 - VAD, DTMF, CNG, G.168, and T.38 G3 Fax Relay
- AddPac APOS Internetworking Software to provide Scalability, Functionality, Stability, and QoS Control
- Static, RIP v1/2, OSPF v2 and IEEE 802.1Q VLAN Routing Protocols
- Provides ATM Services such as various Traffic Types, ATM Signaling, Traffic Managements, and Interworking Features Support
- Traffic Queuing, SNMP MIB v2 for Network Management Features
- Standard & Extended Access List for Security Functions

Network Diagram Using AP2850 Multiservice Router



Hardware Specification

Microprocessor

- CPU 64bit RISC Microprocessor

Memory

- Flash Memory 8Mbyte
- Main Memory 32/64M bps High-Speed SDRAM
- Boot Memory 512Kbyte Flash Memory

Network Interface

- Fixed LAN Port Two(2) 10/100Mbps Ethernet Interface
- Fixed Async Serial Port Two(2) Asynchronous Serial Interface
- Multiple E1/T1 Port Four(4) E1/T1 ATM/IMA Interface
- Console Port One(1) E1/T1 ATM Interface
- One(1) RS-232C Interface

Multiservice Network Modules

- FXS Voice Module 4 Port FXS Voice Interface
- FXO Voice Module 4 Port FXO Voice Interface
- E&M Voice Module 4 Port E&M Voice Interface
- FXO&FXS Voice Module 2 Port FXO&2 Port FXS Voice Interface
- Digital E1/T1 Module 1 Port Digital E1/T1 Module (ISDN-PRI)
- 2 Port Digital E1/T1 Module (ISDN-PRI)
- 1 Port Frame-Relay Network Module

Power & Operation Environments

- Power Requirement VAC 110~220V, 50/60Hz, 15Watt
- Operating Temperature 0°C to + 50°C (32° to 122°F)
- Storage Temperature -40°C to +85°C (-40° to +185°F)
- Relative Humidity 5% to 95% (Non-condensing)

Dimensions

- W X D X H (mm) 435mm X 248mm X 43mm

Support Protocols & Services

IP Routing Protocols

- Static, RIP v1/v2, OSPF v2, OSPF v2 Routing
- Transparent Bridging (IEEE Spanning Tree Protocol)

ATM Services

- Standard Single E1/T1 ATM Service
- ATM Classes of Service Support
 - ATM PVCs and SVCs Service
 - CBR, rt-VBR, nrt-VBR, UBR, and UBR+ Support
 - AAL0, AAL5 and AAL2 Support for Data, Voice, and Video Service
- ATM PVC UNI 3.0, 3.1 and 4.0 Support
- Inverse Multiplexing over ATM (IMA)
- Multiple E1/T1 ATM Service
- ATM Traffic Management Support
- ATM Encapsulation, Interworking Feature
 - IpoA, PPPoA and PPPoE Support

Digital E1/T1

- Voice 30 Channel, ISDN-PRI Protocol, and R2 signaling Support

Frame-Relay Service

- Frame-Relay PVC Protocol (FRF.5, FRF.8) and V.35 Interface
- Multimedia Video Conference Solution

Voice over IP Service

- ITU-T H.323 v3 VoIP Protocol with ITU-T H.235 Security Feature
- SIP protocol support compliant with IETF RFC3261 (or RFC2543)
- H.323 and SIP dual stack support
- G.723.1, G.729.A, G.711 Voice Compressions
- Voice Processing Features Supports
 - VAD, DTMF, CNG, G.168 and T.38 G3 FAX Relay
- ITU-T H.323 Gateway, Gatekeeper Support
- Enhanced QoS Management Features for Voice Traffics

Network Managements

- Standard SNMP Agent (MIB v2) Support
- Traffic Queuing and Frame-Relay Flow Control
- Remote Management using Console, Rlogin, Telnet
- Web based Managements using HTTP Server

Security Functions

- Standard & Extended IP Access List
- Enable/Disable for Specific Protocols
- Multi-Level User Account Management
- Auto-disconnect for Telnet/Console Sessions
- PPP User Authentication Supports
 - Password Authentication Protocol(PAP)
 - Challenge Handshake Authentication Protocol (CHAP)

Other Scalability Features

- DHCP Server & Relay Functions
- Network Address Translation (NAT) Function
- Port Address Translation (PAT) Function
- Cisco Style Command Line Interface(CLI)
- Network time Protocol(NTP) Support
- Remote Upgrade for APOS Management using FTP/TFTP

Ordering Information

- AP2850-01 : AP2850 Multiservice Router Standard Configuration
 - Two(2) Fast Ethernet, Two(2) Async Serial, Console
 - Four(4) Multiple E1/T1 ATM/IMA
 - Four(4) Multiservice Network Integration Module
 - 64bit RISC CPU, 4MB Flash, 32MB SDRAM
 - APOS v3.xx with Operation Manual
 - Including CAB-LAN, CAB-CON
- AP-1FRV35 : One(1) Frame-Relay Network Module
- AP-1PBXE1 : One(1) PBX E1/T1 Network Module
- AP-FXS4 : Four(4) FXS Voice Interface Module
- AP-FXO4 : Four(4) FXO Voice Interface Module
- AP-E&M4 : Four(4) E&M Voice Interface Module
- AP-FXS2O2 : Two(2) FXO & Two(2) FXS Voice Interface Module
- CAB-V35 : V.35 DTE Cable
- CAB-LAN : RJ45 LAN Cable
- CAB-CON : RJ45 Serial Console Cable

Contact Information

Web site : <http://www.addpac.com>

E-mail : info@addpac.com

AddPac Technology Co., Ltd.

3F, Jeong-Am Bldg., 769-12, Yeoksam-Dong
Kangnam-Gu, Seoul, 135-080, KOREA
Phone +82 2 568 3848
Fax + 82 2 568 3847

2000, AddPac is a registered trademark of AddPac Technology.
Specifications and features subject to change without notice.
All brands & products are trademarks of their respective organization.