

# AP-VR2000 Video Service Router

High-performance Multimedia Gateway Solution



## **AddPac**

**AddPac Technology**

Sales and Marketing

[www.addpac.com](http://www.addpac.com)

# AP-VR2000 Video Service Router

- Product Overview
- Benefits and Features
- Hardware Specification
- Software Service
- Video Service & Features
- Audio & Voice Service and Features
- Network Service and Features
- Application Area
- Ordering Information



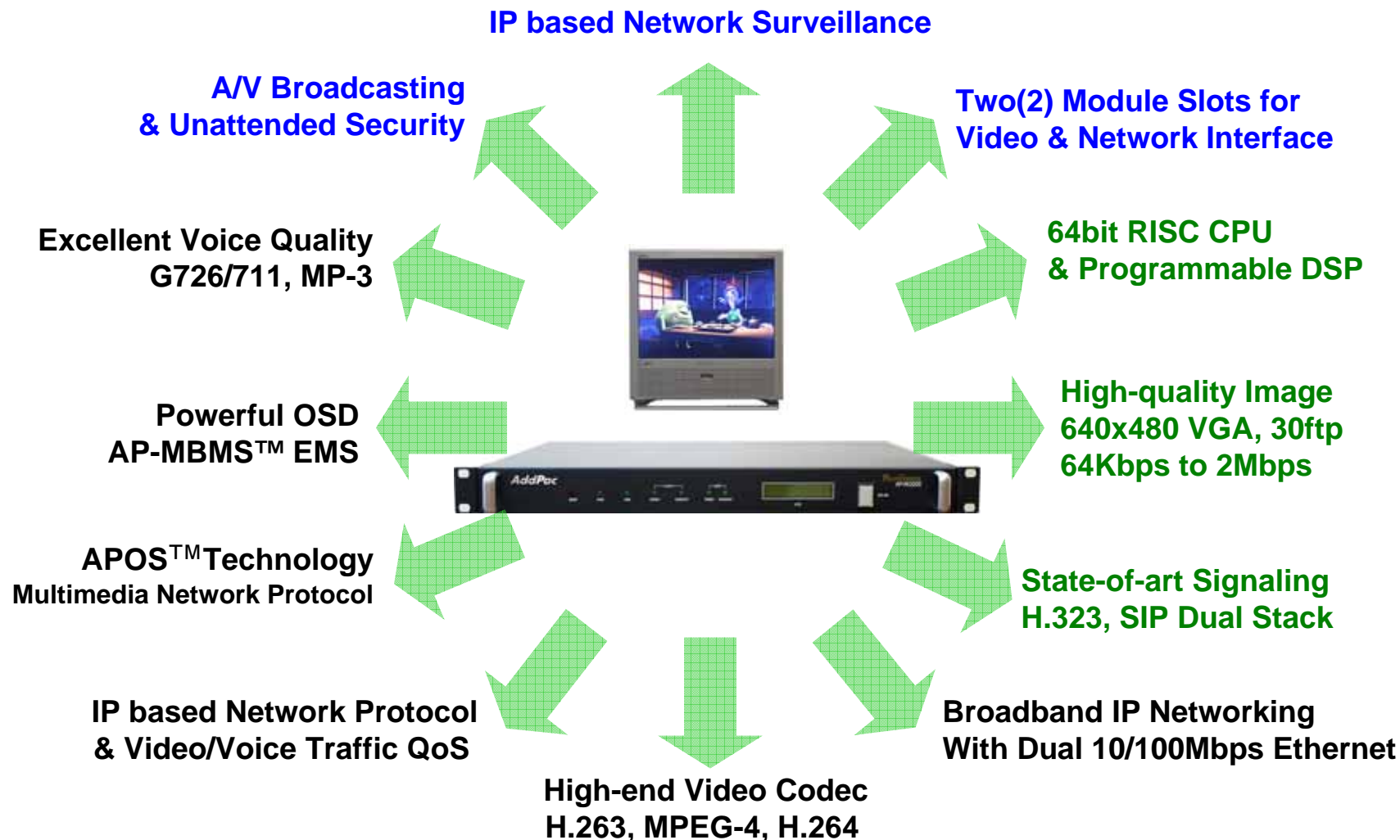
# Product Overview

## AP-VR2000 Video Service Router

- Two(2) Module Slots for Video and Network Interface
- IP based Audio/Video Broadcasting Solution
- IP based Network Surveillance Solution
- High-performance Video, Audio, and Voice Service
- Firmware Upgradeable Architecture
- Video Solution with Outstanding Network Service Capability
- Audio/Video Privacy Protection

# Product Highlights

## AP-VR2000 Video Service Router



# Benefits and Features

## AP-VR2000 Video Service Router

- **High Quality Images up to 64kbps and 2Mbps**
- **High-performance Audio & Video Codec Support**
  - H.263, MPEG-4, and H.264 Video Codec
  - Line IN/OUT : G.726, G.711, MP-3, OGG Vorbis\* Audio Codec
- **Up to 30 frame/sec, 640 x 480(VGA) Resolution**
- **Voice over IP Signaling Protocol for Voice over IP Service**
  - H.323, SIP Multiple Stack Support
- **IP based Network Protocol Support**
- **Video Application**
  - Audio & Video Broadcasting Solution
  - Network Surveillance Solution
  - Video on Demand Service Solution

# Hardware Specification

AP-VR2000 Video Service Router

64bit  
CPU

High-end  
DSP

- **64bit RISC Microprocessor Computing Power**
- **Built-in High-end Programmable DSP Hardware Architecture**
- **Main Chassis**
  - **Network Interface**
    - Two(2) 10/100Mbps Fast Ethernet
    - One(1) RS-232C Console (RJ45)



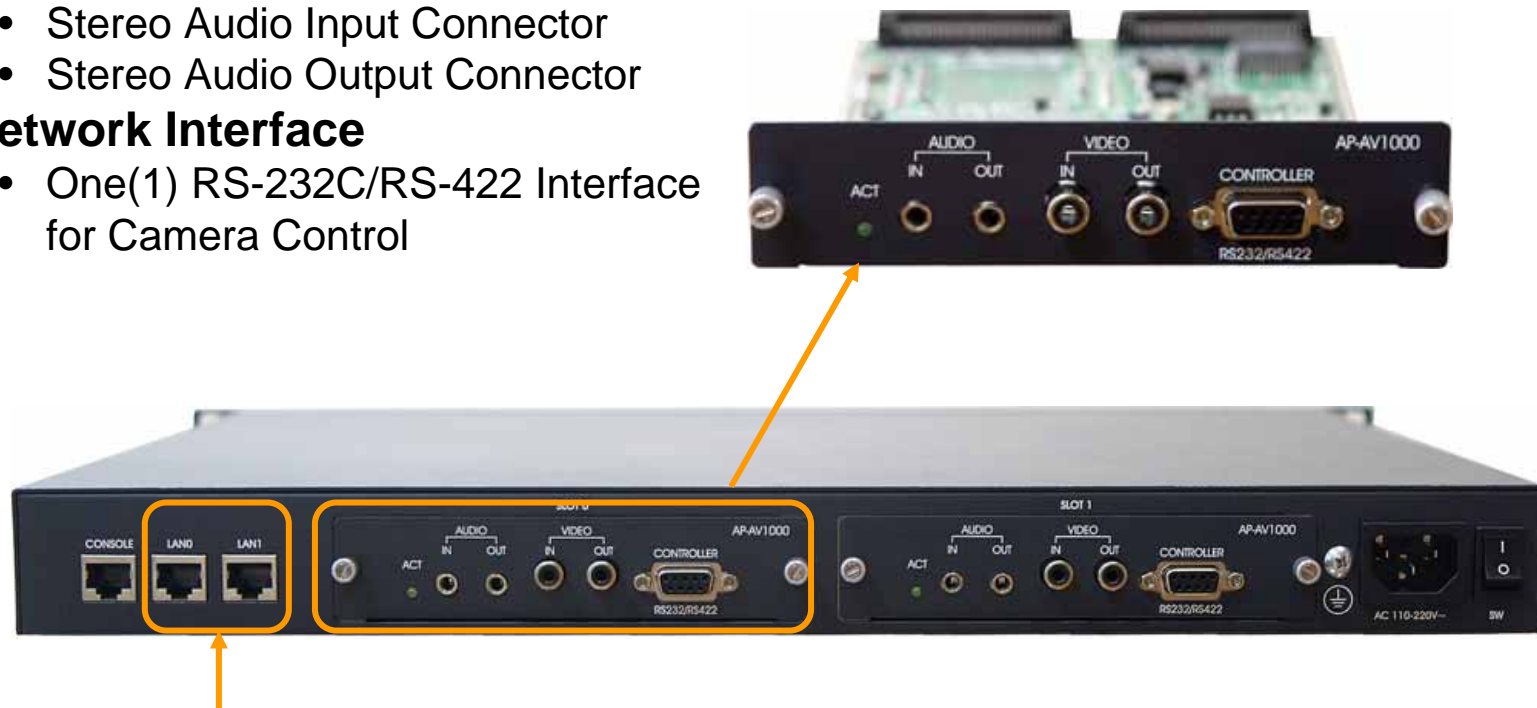
# Hardware Specification

AP-VR2000 Video Service Router

64bit  
CPU

High-end  
DSP

- **Video Codec Module (AP-AV1000)**
  - **Powerful Video Interface**
    - RCA/BNC Video Input/Output
  - **High quality Audio and Voice Interface**
    - Stereo Audio Input Connector
    - Stereo Audio Output Connector
  - **Network Interface**
    - One(1) RS-232C/RS-422 Interface for Camera Control



Two(2) Fast Ethernet

**AddPac**

[www.addpac.com](http://www.addpac.com)







# Hardware Specification

AP-VR2000 Video Service Router

ATM  
SAR

V.35

- Network Module**

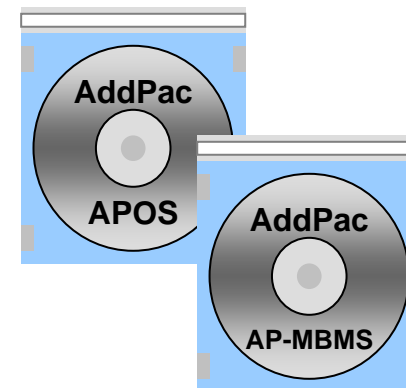
<b>AIM-ATMOC3-1</b>		1-Port OC3 155Mbps ATM Network Interface Module
<b>AIM-ATMDS3-1</b>		1-Port DS3 45Mbps ATM Network Interface Module
<b>AIM-ATM1E1</b>		1-Port ATM E1 Network Interface Module
<b>AIM-V35FR1</b>		1-Port V.35 Interface Module
<b>AIM-V35FR2</b>		2-Port V.35 Interface Module
<b>AIM-V35FR6</b>		6-Port V.35 Interface Module



# Software Service

## AP-VR2000 Video Service Router

- **Built-in AddPac APOS Internetworking Software**
  - Scalability, Functionality, and Stability Features
  - Video Traffic QoS Control
- **Programmable Video, Audio, and Voice Services**
  - Video Codes, Audio, and Voice Codec
- **Firmware Upgradeable DSP Architecture**
- **WAN Router Function Integrated**
- **Industry Standard IP based Network Protocol Features**
- **AP-MBMS (Multi-media Broadcasting Management System) Solution**
  - Server and Client Architecture
  - JAVA based EMS Solution
  - Broadcast Status Monitoring, Scheduling, Login Management, and Remote System Management Support
  - Intel Pentium Machine with MS Window Server OS and MS-SQL



# Video Service and Features

## AP-VR2000 Video Service Router

- **Various Video Networking Interface**
  - Composite (RCA)
- **High-performance Video Codec Support**
  - H.263, MPEG-4, JPEG, and H.264
- **Powerful Image Resolution Support**
  - QCIF(176x144), CIF(352x288), QVGA(320x240), and VGA(640x480)
- **Up to 30fps at 1Mbps with VGA-Resolution(MPEG-4)**
- **64Kbps to 2Mbps Operating Video Traffic Bandwidth**
- **Rate Control for Video Traffic QoS**
  - Ensuring Optimized Quality
  - Frame Rate with Limited Bandwidth
- **High-end Error Resilient Against Various Packet Error**



# Audio & Voice Service and Features

## AP-VR2000 Video Service Router

- **Audio & Voice Networking Interface**
  - Audio Input/Output Port (2 x 3.5mm Stereo Female Connector)
- **VoIP based Signaling Protocol Support**
  - H.323, SIP Multiple Signaling Protocol Stack
  - H.323 Gateway, Gatekeeper Support
- **High-performance Audio & Voice Codec Support**
  - Line IN/OUT : G.726, G.711, MP-3 Audio Codec
- **Enhanced QoS Management Features for Voice Traffics**

# Network Service and Features

## AP-VR2000 Video Service Router

- **Routing Protocols**
  - Static, RIP v1/v2, OSPF v2, and IEEE 802.1Q VLAN Routing
  - IGMP Protocol, Multicasting Join
- **WAN Protocols**
  - Point-to-Point Protocol(PPPoE for ADSL),etc
  - ATM Classes of Service (AAL0,5), ATM Encapsulation(IPOA, PPPoA)
- **Security Functions**
  - Standard & Extended IP Access List
  - Enable/Disable for Specific Network Protocols
  - Multi-level User Account Management
  - Auto-disconnect for Telnet/Console Sessions
  - PPP User Authentication Supports (PAP & CHAP)
- **Operation & Managements**
  - System Performance Analysis for Process, CPU, Connection Interface
  - Debugging, System Auditing, and Diagnostics Support
  - System Booting and Auto-rebooting with Watchdog Feature
  - System Managements with Data Logging
  - IP Traffic Statistics with Accounting

# Network Service and Features

## AP-VR2000 Video Service Router

- **Network Managements**
  - DHCP Server & Relay Functions
  - Network Address Translation (NAT) Function
  - Port Address Translation (PAT) Function
  - Transparent Bridging (IEEE Standard) Function
    - Spanning Tree Bridging Protocol Support
    - Remote Bridging Support
    - Concurrent Routing and Bridging Support
  - Cisco Style Command Line Interface (CLI)
  - Network time Protocol (NTP) Support
- **Network Managements**
  - Standard SNMP Agent (MIB v2) Support
  - Remote Management using Console, Telnet
  - Web based Management using HTTP Server Interface

# AP-VR2000 Video Service Router

## Application Area

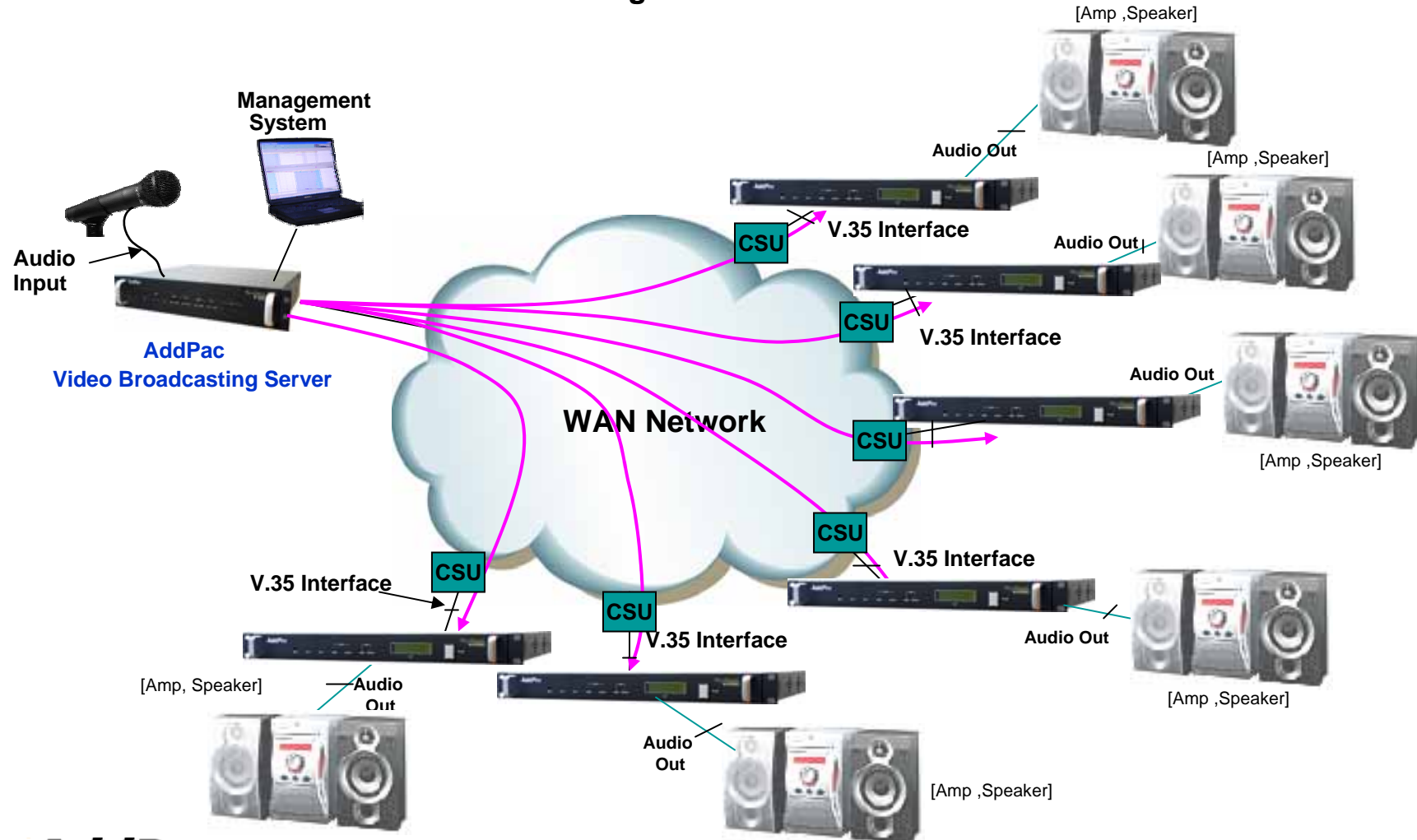
- Audio Real-time Broadcasting
- Audio/Video Real-time Broadcasting
- Network Surveillance
- Video Line Extension



# Audio Real-time Broadcasting

AP-VR2000 Video Service Router

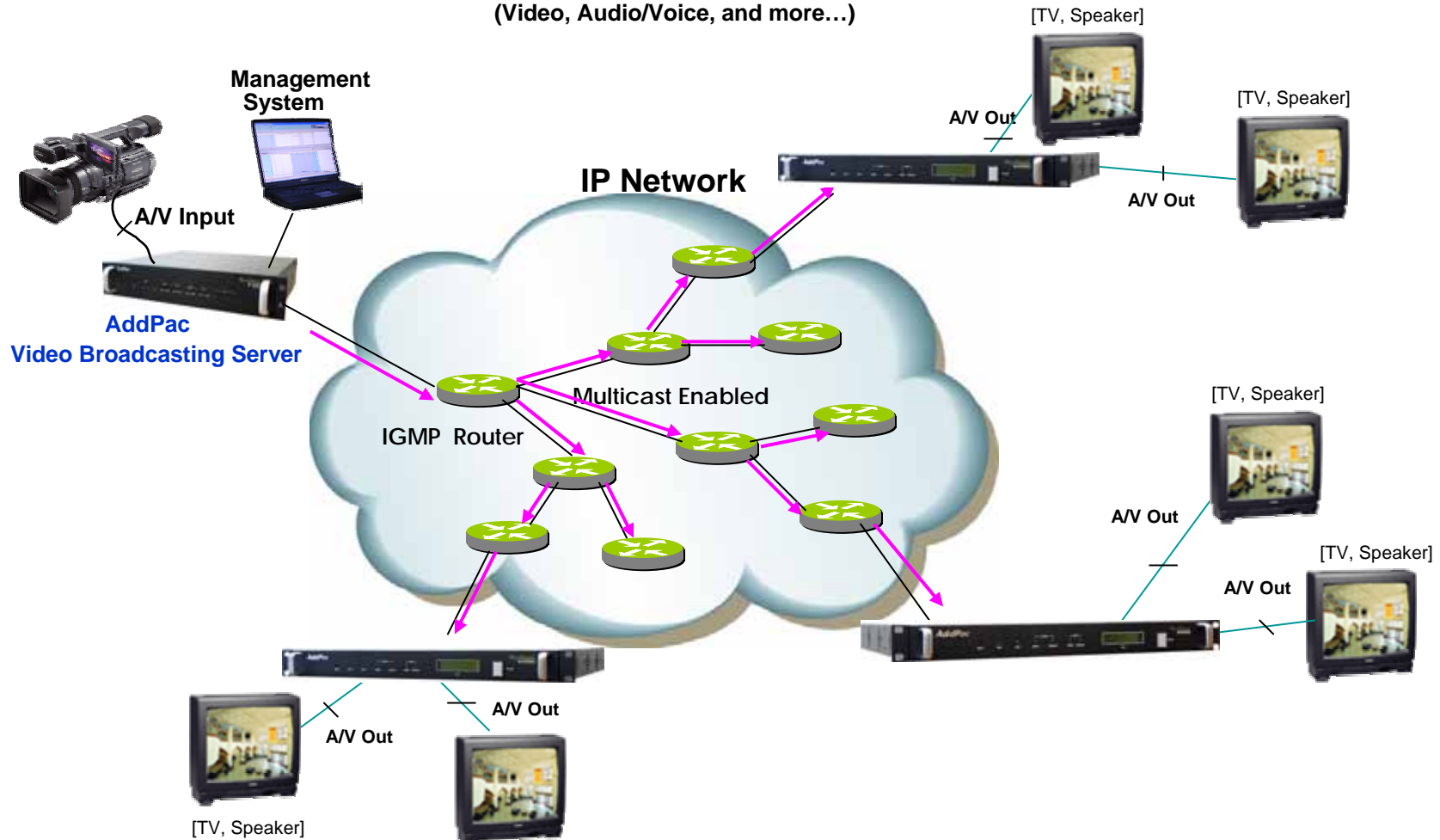
## Audio Broadcasting Service via IP Network



# Audio/Video Real-time Broadcasting

AP-VR2000 Video Service Router

**Audio and Video Broadcasting Service via  
Multicasting IP Network**  
(Video, Audio/Voice, and more...)



**AddPac**

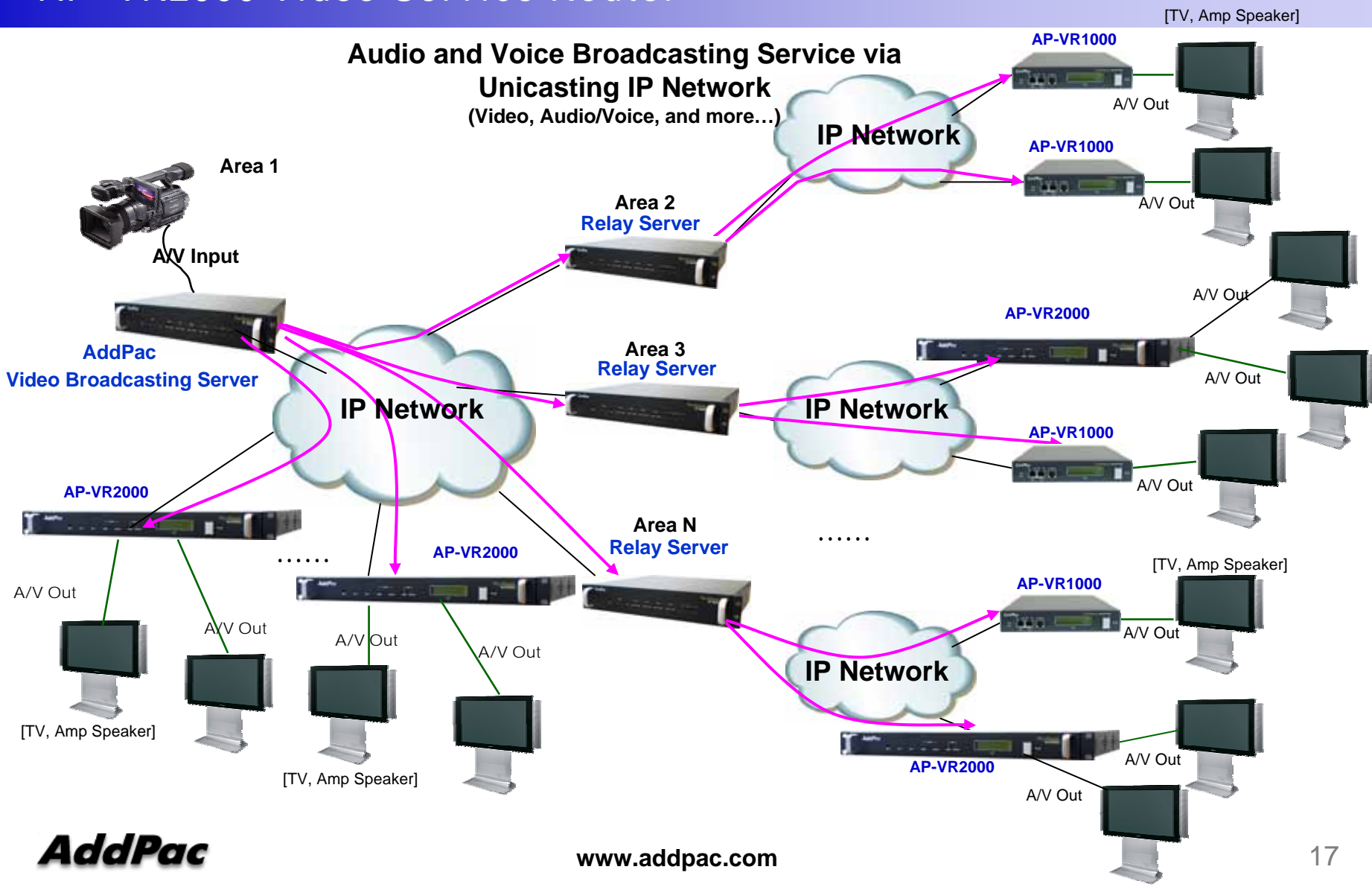
[TV, Speaker]

[www.addpac.com](http://www.addpac.com)



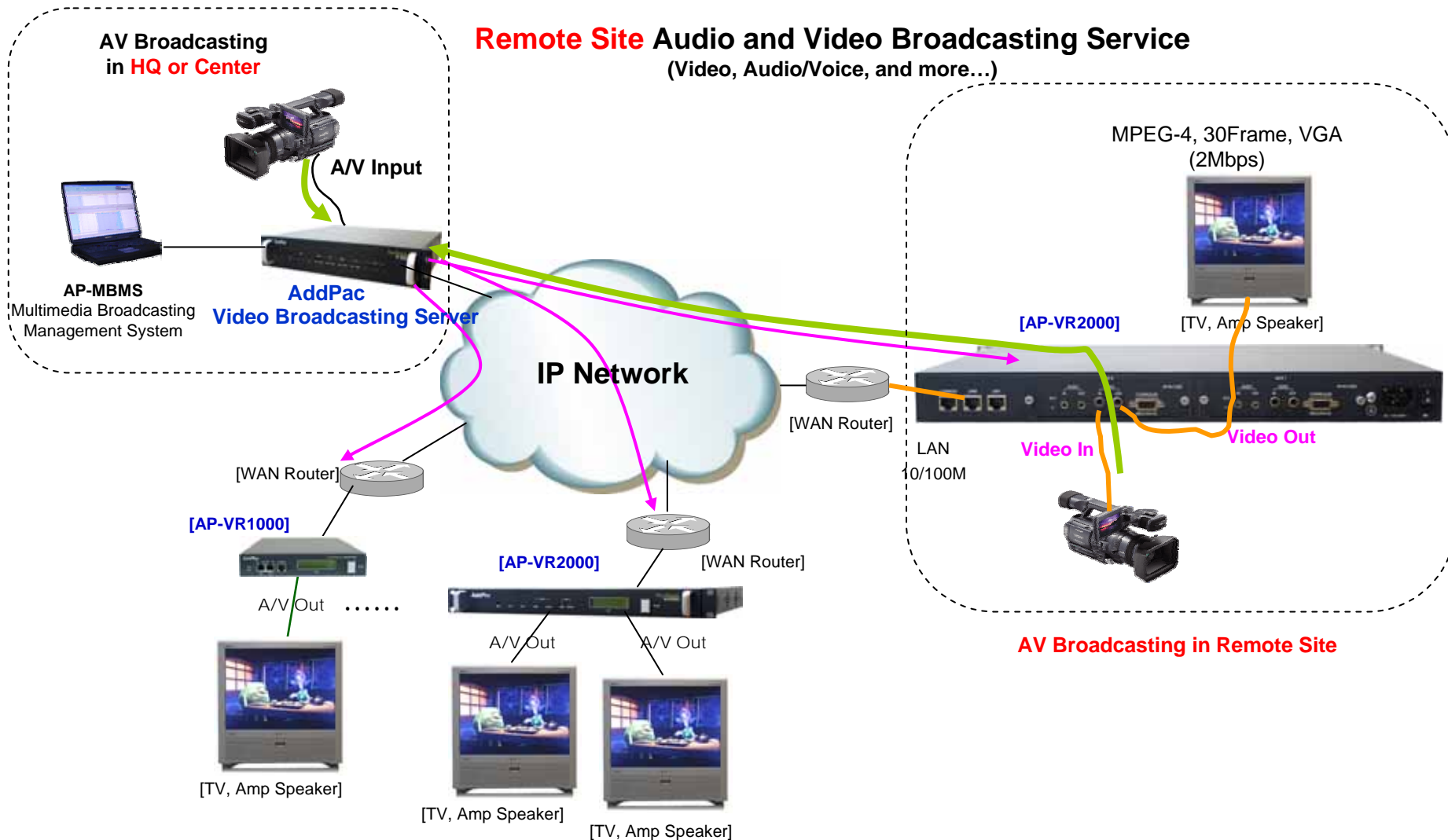
# Audio/Video Real-time Broadcasting

## AP-VR2000 Video Service Router



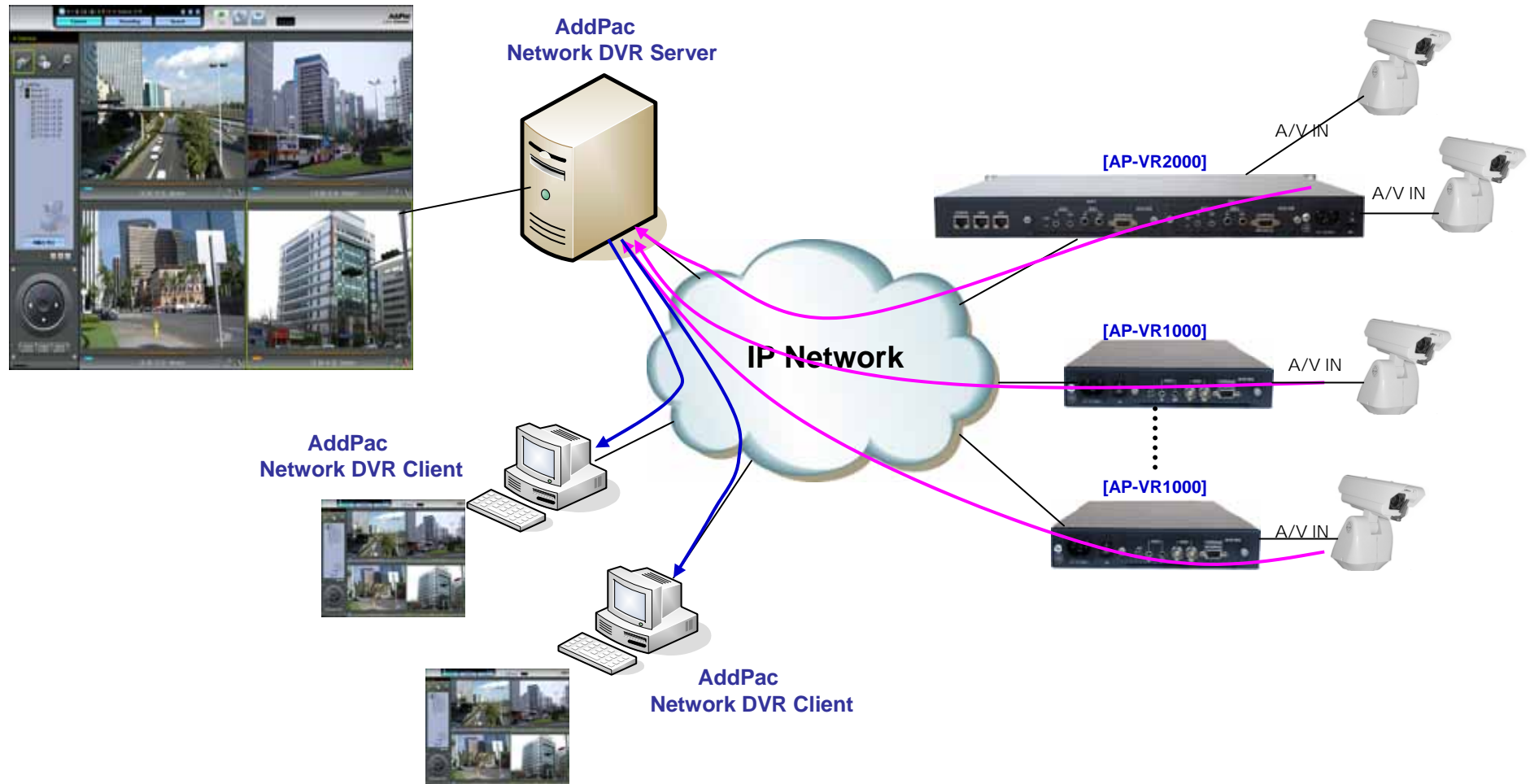
# Audio/Video Real-time Broadcasting

## AP-VR2000 Video Service Router



# Network Surveillance

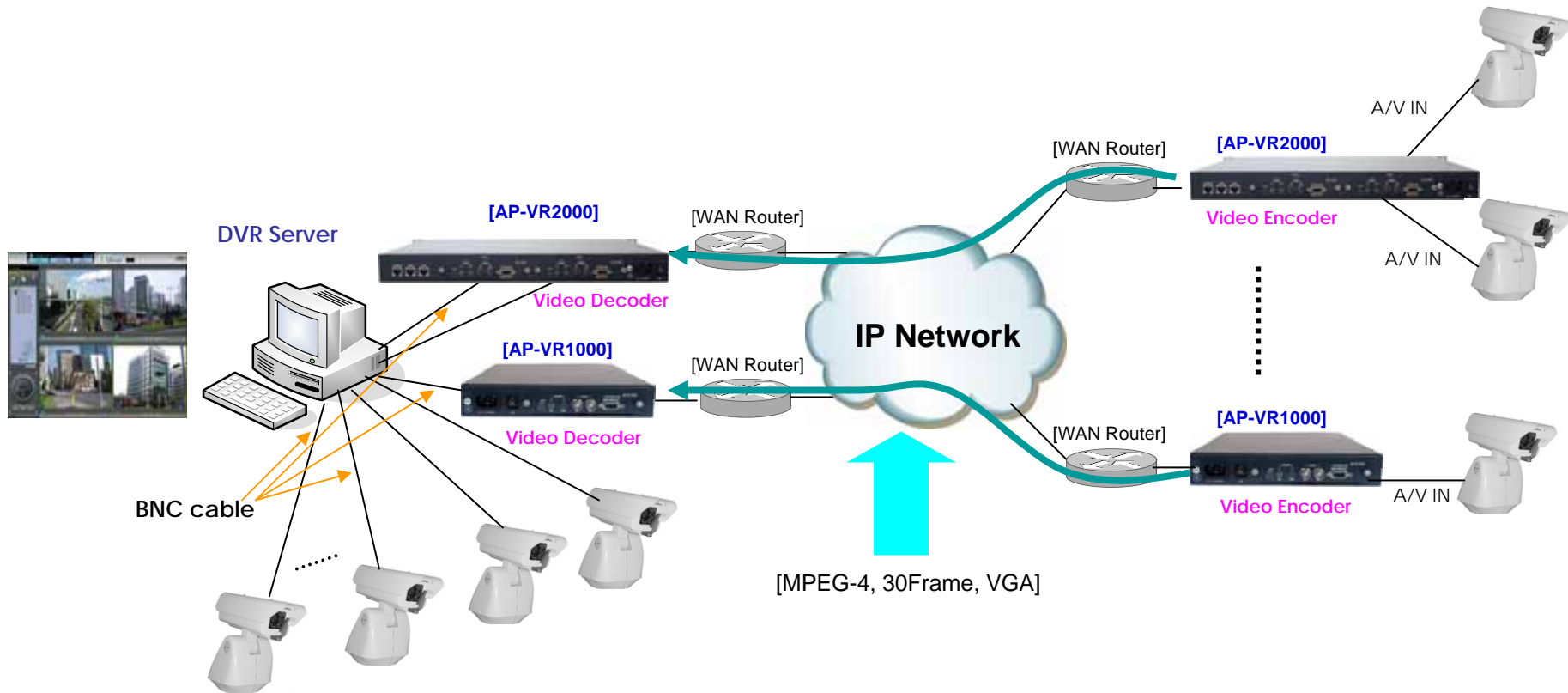
## AP-VR2000 Video Service Router



# Video Line Extension

AP-VR2000 Video Service Router

Video Encoder



# Ordering Information

- **AP-VR2000 Video Service Router Hardware**
  - AP-VR2000 Video Service Router Main Body
  - High-performance 64bit RISC CPU with Programmable DSP Architecture
  - Two(2) Module Slots for Video and Network Interface Cards
  - 2-ports 10/100Mbps Fast Ethernet and 1-port RS-232C Console
  - Including Network Cable Set & Ext. Power Supply, etc.
  - Optional Modules : AP-AV1000, etc
- **Built-in APOS Internetworking Software for AP-VR2000**
- **Including 1 Year Hardware Warranty**
- **Product Documents**
  - Install and Operation Guide (PDF)
- **Pricing**
  - AddPac Technology Regional Sales Manager
  - Authorized Sales and Marketing Representatives
  - Please Contact [www.addpac.com](http://www.addpac.com)



# AP-VR2000 Video Service Router

# Thank you!

**AddPac Technology Co., Ltd.**  
Sales and Marketing

Phone +82.2.568.3848 (KOREA)

FAX +82.2.568.3847 (KOREA)

E-mail [sales@addpac.com](mailto:sales@addpac.com)