



AP-VSB2

Two(2)-Channel Video Selector Box

Next Generation IP based HD Video Broadcasting Solution

Preliminary Product Overview



AddPac

AddPac Technology

Sales and Marketing

www.addpac.com

Contents

- Product Overview
- Service Network Diagram
- Hardware Specification
- HD IP Broadcasting Solution
- Ordering Information



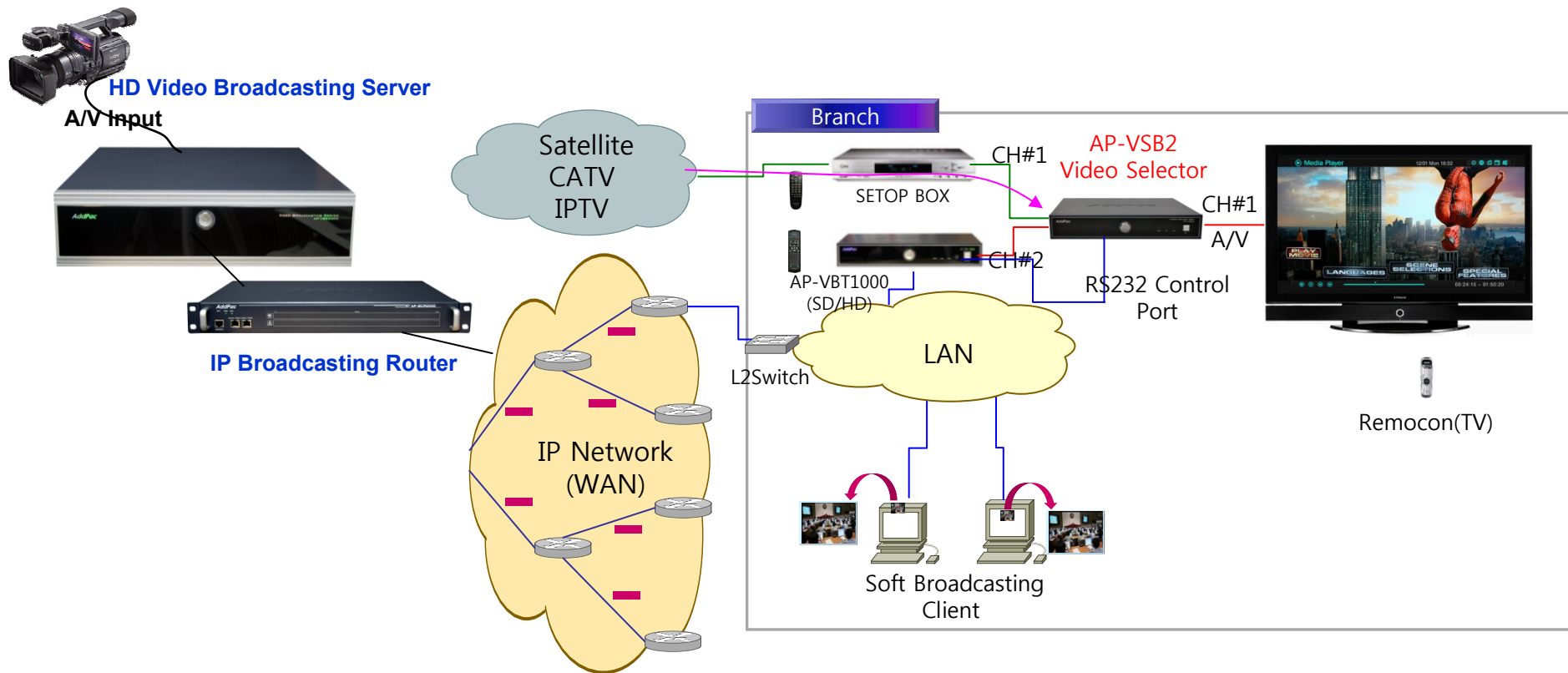
Product Overview

AP-VSB2 Video Selector Box

- High Performance 2:1 Video Selector Solution
- Two(2)-Channel Video Input/One(1)-Channel Video Output
- RS232C based Video Source Selector
- Manual Video Source Control Support
- Various Audio/Video Port Support
 - Analog CVBS Composite Interface
 - Component Interface (Y, Cr, Cb)
 - HDMI Interface (DVI via Converter Cable)
 - Stereo Audio Interface (RCA Connector)
- Built-in Internal Power Supply
- “19inch Rack Mountable

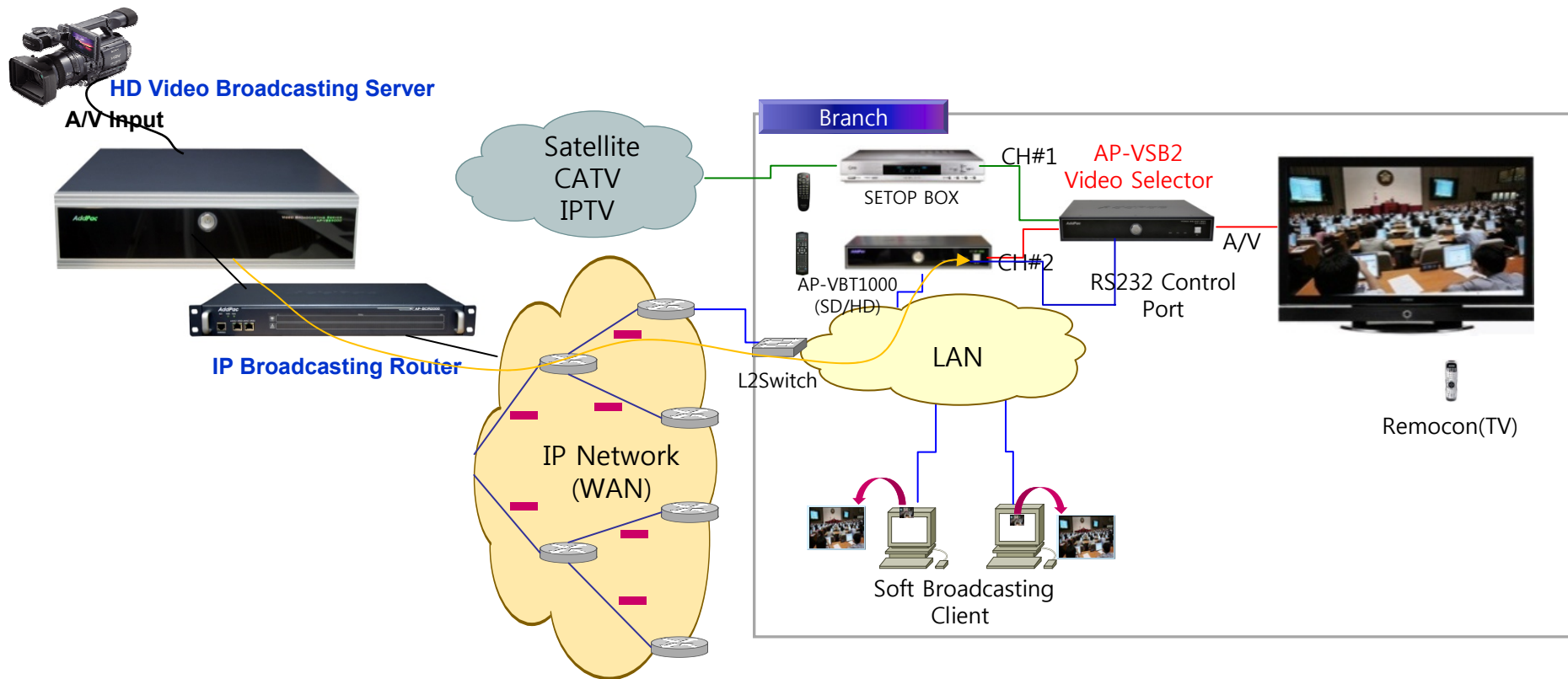
Service Network Diagram (CH #1)

AP-VSB2 Video Selector Box



Service Network Diagram (CH #2)

AP-VSB2 Video Selector Box



Hardware Specification

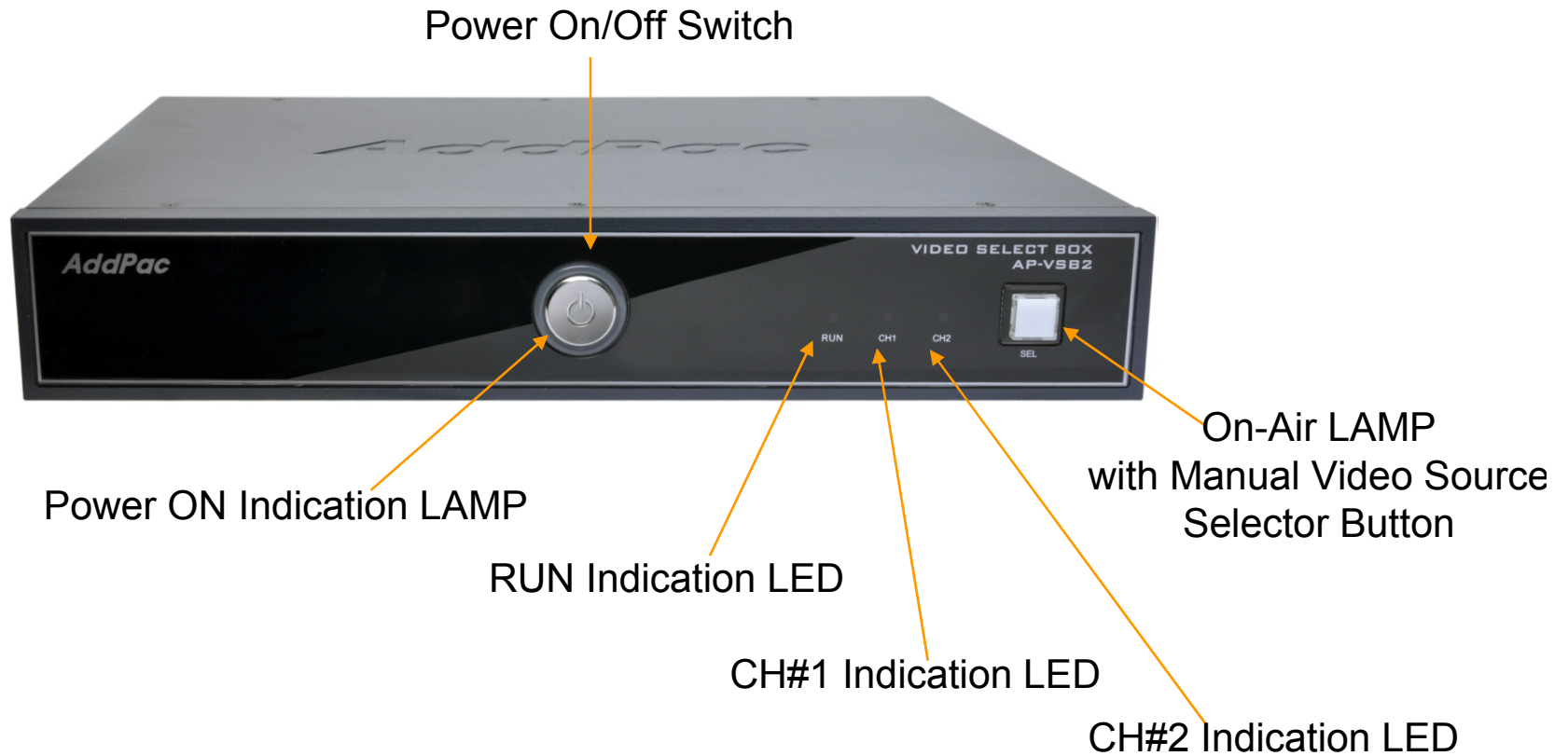
AP-VSB2 Video Selector Box

- Main Chassis
 - Power On/Off Switch (Front Panel) with Power On LAMP
 - Manual Video Source Selector Button with On-AIR Indication LAMP(Front Panel)
 - Control Interface
 - One(1) RS-232C Console (RJ45)
 - Powerful Video Interface
 - CVBS
 - Component(Y, Cr, Cb)
 - HDMI(DVI) Interface
 - Audio Interface
 - Stereo Audio Interface (Left, Right)
 - SMPS Internal Power Supply

Hardware Specification

AP-VSB2 Video Selector Box

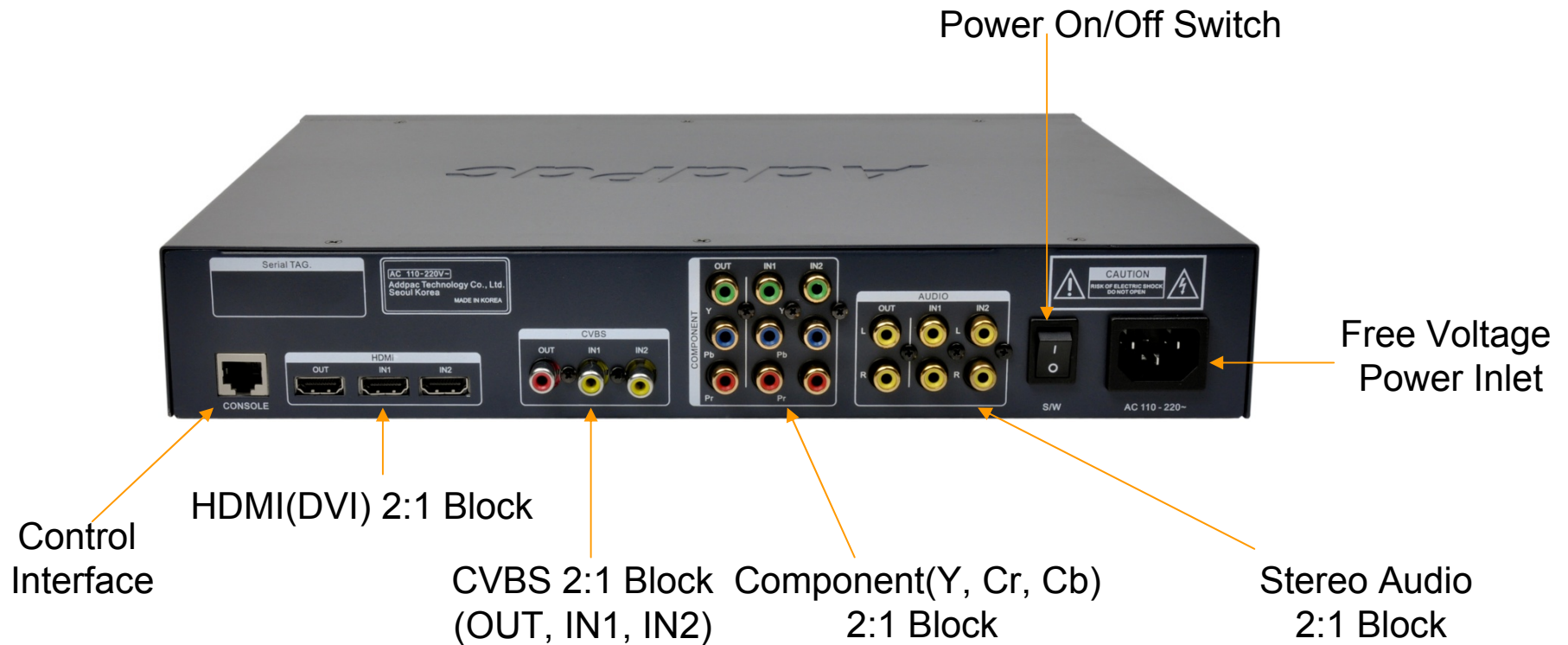
Front Side



Hardware Specification

AP-VSB2 Video Selector Box

Back Side

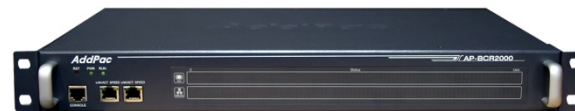


HD IP Broadcasting Solution

- HD Video Broadcasting Server : AP-VBS5000
- IP Broadcasting Router : AP-BCR2000
- HD Video Broadcasting Terminal : AP-VBT1000
- Video Select Box : AP-VSB2
- Video Broadcasting Monitoring Terminal: AP-VP500
- Video Broadcasting Terminals : AddPac Video Phones
- Network Service Diagram



AP-VBS5000



AP-BCR2000

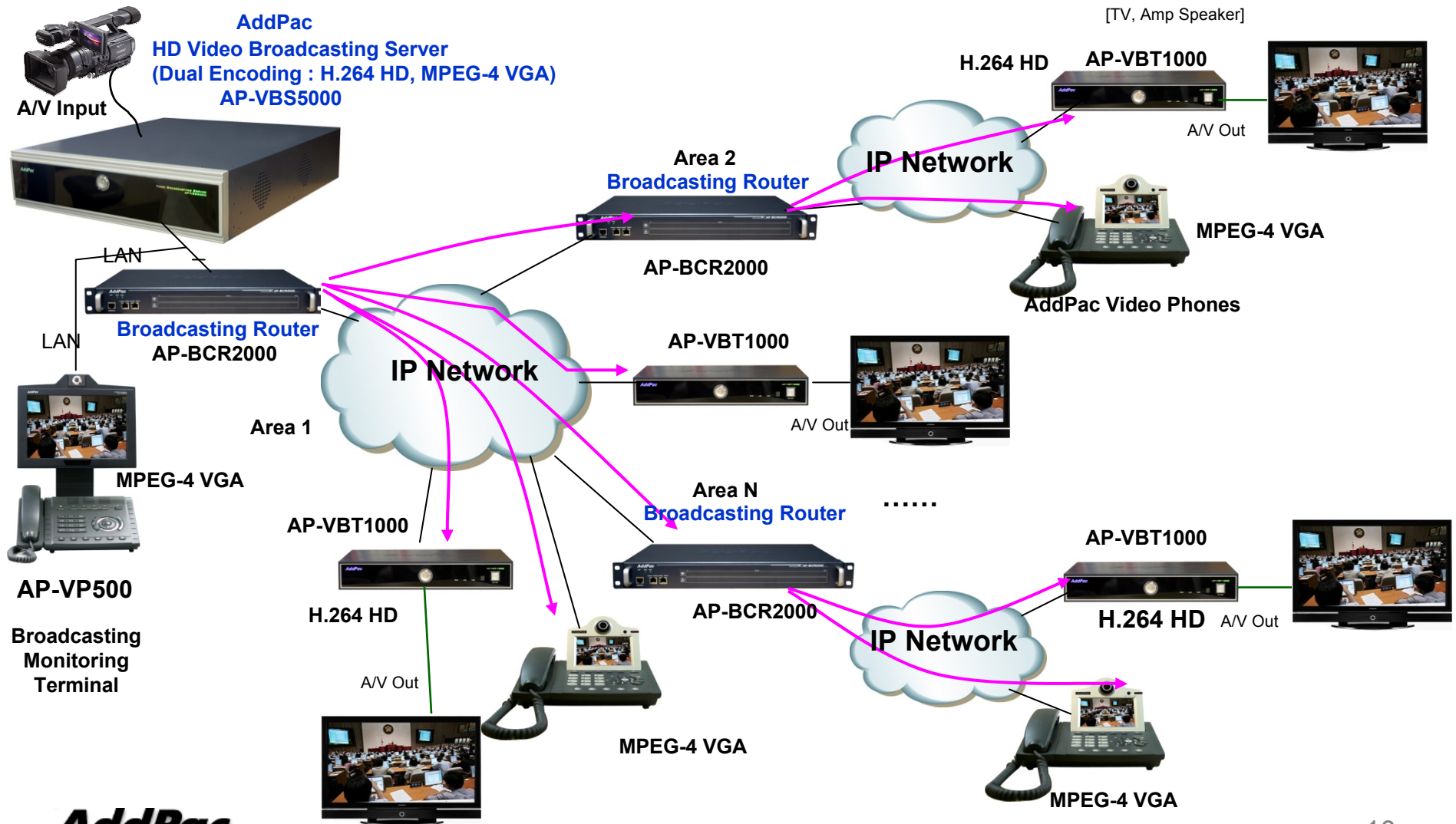


AP-VBT1000



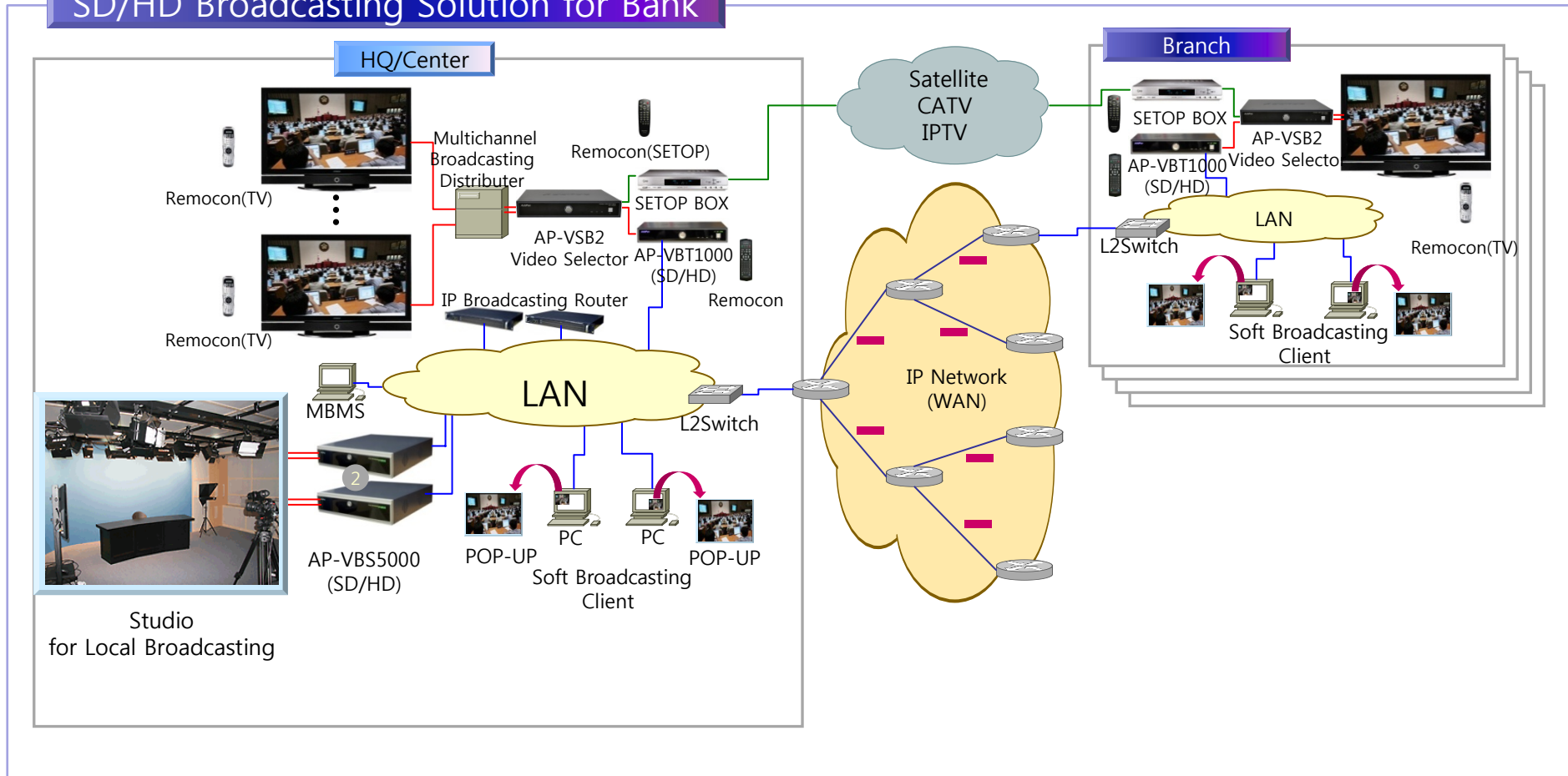
AP-VP500

HD IP Broadcasting Component Diagram (Ex 1)



HD IP Broadcasting Component Diagram(Ex 2)

SD/HD Broadcasting Solution for Bank



Ordering Information

- **AP-VSB2 Video Selector Hardware**
 - AP-VSB2 Video Selector Box Main Body
 - High-performance Video Processor Architecture
 - 1-port RS-232C Control Port
 - CVBS, Component, HDMI(DVI)Video Interface
 - Stereo RCA Audio Interface
 - Internal Built-In Power Supply
- **Built-in APOS Internetworking Software for AP-VSB2**
- **Including 1 Year Hardware Warranty**
- **Product Documents**
 - Install and Operation Guide (PDF)
- **Pricing**
 - AddPac Technology Regional Sales Manager
 - Authorized Sales and Marketing Representatives
 - Please Contact www.addpac.com



Thank you!

AddPac Technology Co., Ltd.
Sales and Marketing

Phone +82.2.568.3848 (KOREA)

FAX +82.2.568.3847 (KOREA)

E-mail sales@addpac.com