



AP-VAC50 IP Video Door Phone

AP-VAC50 enterprise IP video door phone controls visitor access through video screen using LAN or internet. It has an excellent scalability using SIP standard VoIP signaling process feature by interworking with AddPac IP-PBX, video phone, and soft phone. It also supports the state of the art audio/video codec optimally. It provides enterprise visitor access control solution along with AP-ACS1000 Access Control Server.

AP-VAC50 is a new IP video door phone where Internet voice communications are combined with Internet video communications. This product provides advanced features and services such as video codecs (e.g. H.264, MPEG4), 2.4 Inch TFT color LCD, high-performance AEC (Acoustic Echo Canceller), high quality audio sound, built RF Interface, PoE(Power over Ethernet), QoS, and standard VoIP signaling protocols such as SIP.

AP-VAC50 is a high-performance multi-functional IP video door phone where the state-of-the-art video processing technology is added to the voice processing technologies developed by AddPac in the VoIP field. Since AP-VAC50 supports networks of 64 Kbps to 1Mbps, it is available at any Internet-enabled place. Above all, AP-VAC50 ensures the best video quality due to the 'rate control' function that ensures the best video quality and frame rate at a limited bandwidth and the high-end error resilience technology for troubleshooting various packet failures on the Internet. In case of H.264 video codec, it supports max. 30 fps (frame per second) of VGA(640 x 480) video image. AP-VAC50 IP video door phone supports visitor access feature through video image. It also supports RF card access and password access feature for the convenience of employees.

AP-VAC50 RISC CPU and DSP are all programmable structure so that user may use the latest features without much effort by simply setting an auto upgrade option or download from the homepage.

AP-VAC50 IP door phone is embedded with Smart Web Manager for video door phone management. User may setup/manage IP video door phone through PC, smart phone, and tablet device.

The performance and reliability of AddPac VoIP, Video and Multimedia equipments have been recognized in global markets as well as the Korean market. AP-VAC50, which is a collection of experiences and know-how accumulated in the enterprise and service provider markets, would be a solution that meets the needs of customers that ask for next-generation communications along with AddPac IP telephony solution.

Product Highlights

- High Performance IP based Video Door Phone Solution
- Unmatched Video Quality for Interactive Communication in 30 fps of VGA(640x480), QVGA(320x240), Supporting Both Encoding and Decoding
- LCD Display : 2.4 Inch 320x 240 Display
- Local User Display Image Size : 160x120
Remote User Display Image Size : 240x160
Video Encoding Image Resolutions :
VGA(640x480), QCGA(320x240)
- Support the Latest Codec Algorithms Such as H.264, MPEG4 for High Quality Video/Voice
- G.711,G.726, etc Voice Codec.
- Optimal Video Quality Avoiding Bandwidth Loss On Asymmetric Network
- High Performance and High Quality AEC (Acoustic Echo Canceller)Embedded.
- Optional Audio Interfaces for a Wide Range of External Devices (back side)
- Easy System Firmware Upgrade On the Basis of High Performance Embedded RISC CPU and Programmable DSP Chipset
- One(1) 10/100Mbps Fast Ethernet Support
- Built-in RF Card Interface
- Internal MIC, Internal Speaker & Amplifier
- Two(2) Alarm Input and One(1) Relay Out Interface (door open, etc)
- RS232/RS485 Interface for Interworking
- OSD (On Screen Display) for Quick and Easy Setup
- Web based Smart Manager Solution for Network Maintenance
- APOS Guarantees Scalability, Reliability, Stability

AP-VAC50 Applications

- IP based video door phone
- Video Communication System
- IP Voice/Video Broadcasting System
- IP based Emergency Call phone

General Hardware Specifications

CPU	High Performance RISC Integrated Processor
DSP	High Performance DSP (Digital Signal Processor)
Memory	512MB Flash Memory 128MB Main Memory (DDR)
Network Interface	1-ports 10/100Mbps Fast Ethernet
PoE Interface	IEEE802.3af compliant, Input voltage range 36V to 57V, Short-circuit Protection
Video Camera	CMOS Video Camera with side LED Lights
RF Card Interface	ISO14443A/B all bit rates : 106/212/424/848kbps, MiFare Series, etc
Audio Interface	Internal MIC and Speaker
I/O Interface	RS232C : 1-Port RS485 : 1-Port Alarm Input : 2-Port Relay Output : 2-Port
Operation Environment	Temperature 0°C ~ +45°C (operating), -40 °C ~ +85°C (storage), Humidity 5% ~ 95%
Power Supply	AC110~220VAC 50/60Hz Free Voltage, 12V 1Amp.
Demension	166mm x 102.8mm x 40.5mm(H x W x D)
Weight	0.36 Kg

Audio/Video Hardware Specifications

External Audio Interface	1-Port RCA Audio Input, Output
Color Video Camera	High Sensitivity for low-light operation Output support for Raw RGB, RGB, and YCrCb format Image Size : VGA, QVGA, and any size scaling down from CIF to 40x30 Support AEC, AGC,AWB, ABF, ABLC
Acoustic Echo Canceller	Full-duplex operation during double-talk situations, One channel AEC, LEC up to 256ms shared Cancels echoes with up to 10dB echo return Advanced noise reduction (up to 20dB)

Audio Service and Signaling Protocol Features

Voice and Audio Codec	G.711, G.726, etc
VoIP Signaling Protocol	SIP VoIP Signaling Protocol SIP Proxy Server Interoperability
DTMF	Detection and Generation, RFC 2833 Compliant
Telephone Features	Touch Dial Pad (3x4 Key)
Voice QoS	Enhanced QoS Management for Voice Traffic

Video Services and Features

Video Codec	H.264 (MPEG4 part 10), MPEG4, etc
Video Resolution	QVGA(320x240),VGA (640x480)
Frame Rate	Up to 30fps with VGA-Resolution (H.264)
Operating Bandwidth	64Kbps ~ 1Mbps
Video QoS Features	Enhanced QoS Management for Video Traffic Rate Control for Best Video Quality Frame Rate Control at a Limited Bandwidth Video Error Concealment Service
Control and Setting	OSD (On Screen Display)

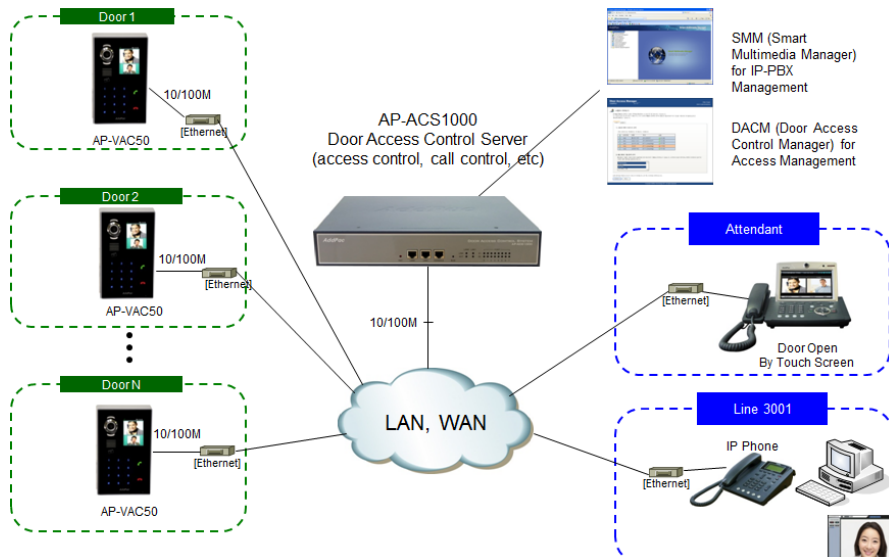
WAN, LAN, IP Services and Other Features

Basic Network Protocol	ARP, IP, ICMP, IGMP,UDP, TCP
Extended Network Protocol	Telnet, FTP, TFTP, HTTP Server, NTP Client
IP Routing	IPv4 Routing, Static, Default Routing
Network Address	IEEE 802.3 Ethernet / IEEE 802.1Q Virtual LAN Fixed (Static), DHCP
Network Management	Web Based Management, Remote Firmware (APOS) Upgrade via FTP/TFTP Support
Miscellaneous	Cisco Style CLI, Auto Upgrade via HTTP, etc

Audio/Video Hardware Specifications

Color TFT LCD	Built-in 2.4 Inch Color TFT LCD, Image Resolution : 320 x 240 Support resolution up to 240xRGBx320 Built-in 172800 bytes internal RAM 6,8,16, and 18-bit RGB Interface Resize Function (x ½, x ¼) On-Chip Power Management System
Microphone	Built-in Internal Microphone
Built-In Speaker	Impedance : 8 +-15%ohm at 1kHz, 1.0 Vrms Sound Pressure : 90 +- 3dB at 0.1W/10 CM at 800Hz, 1.0kHz, 1.2kHz, 1.5kHz Resonance Level : 550Hz +- 20%Hz at Fo Hz, 1.0Vrms Frequency Range : Fo Hz ~20kHz Input Power : Normal : 1.0 W, Max : 2.0W 1-W BTL Output(5V, 0.11 % THD+N) Uncompensated Gains of 2 to 20 (BTL Mode) Thermal and Shot-circuit Protection High Supply Ripple Rejection Ratio
Audio AMP.	

AP-VAC50 Network Diagram



Ordering Information

- AP-VAC50 IP Video Door Phone
- CAB-LAN Ethernet Cable
- Power Adaptor with terminal block

