

AV1500N

2CH Video Codec Module

High-performance Network Surveillance Solution

Multi-Channel D1 Video Encoder



AddPac

AddPac Technology

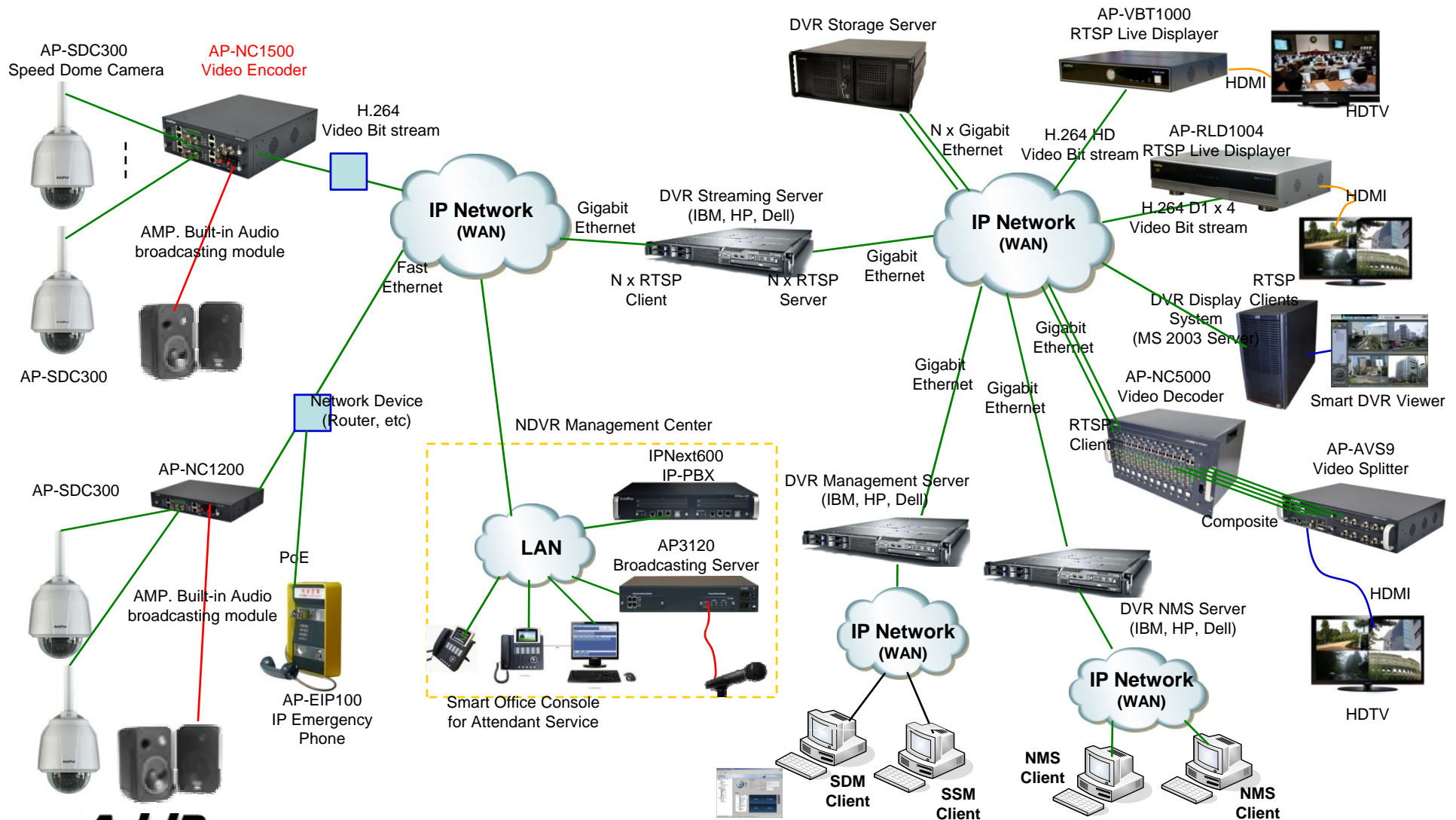
Sales and Marketing

www.addpac.com

Contents


- D1 Network DVR Service Diagram
- AP-NC1200, AP-NC1500, AP-NC3800 Platform
- AV1500N Main Features
- AV1500N Hardware Specification
- AV1500N RSTP Service
- Video Codec Service Features

D1 Network DVR Service Diagram






AddPac

www.addpac.com



AP-NC1200, AP-NC1500, AP-NC3800 Platform

AP-NC1200, AP-NC1500, AP-NC3800 Platform

	AP-NC1200	AP-NC1500	AP-NC3800
Model			
Module Slot	1 Module 2 Card Slot	2 Module 4 Card Slots	12 Module Slots
MAX Channel (AV1500N)	4 Channel Video Input	8 Channel Video Input	24 Channel Video Input
Power Supply	External DC Power Supply	Internal Power Module (AC)	Internal Power Module (AC) Dual Power Supply Module
Power Type	Power Adaptor	Built-In	Module Type

AV1500N D1 Video Codec Modules

High-end
DSP

Main Features

- IP based Audio/Video Encoding Solution
- Video Codec Support : H.264
- Two(2) Channel Video Input Interface
- Video Encoding Service Support (D1, CIF)
- Up to D1 Video Resolution, 30frame/sec
- RTSP, TCP/UDP Protocol Support
- Multi-Session RTSP Server Service
- IP based Network Surveillance Solution
- High-performance Video, Audio, and Voice Service
- Firmware Upgradeable Architecture
- Video Solution with Outstanding Network Service Capability
- Audio/Video Privacy Protection
- Smart Web Interface

AV1500N D1 Video Codec Modules

High-end
DSP

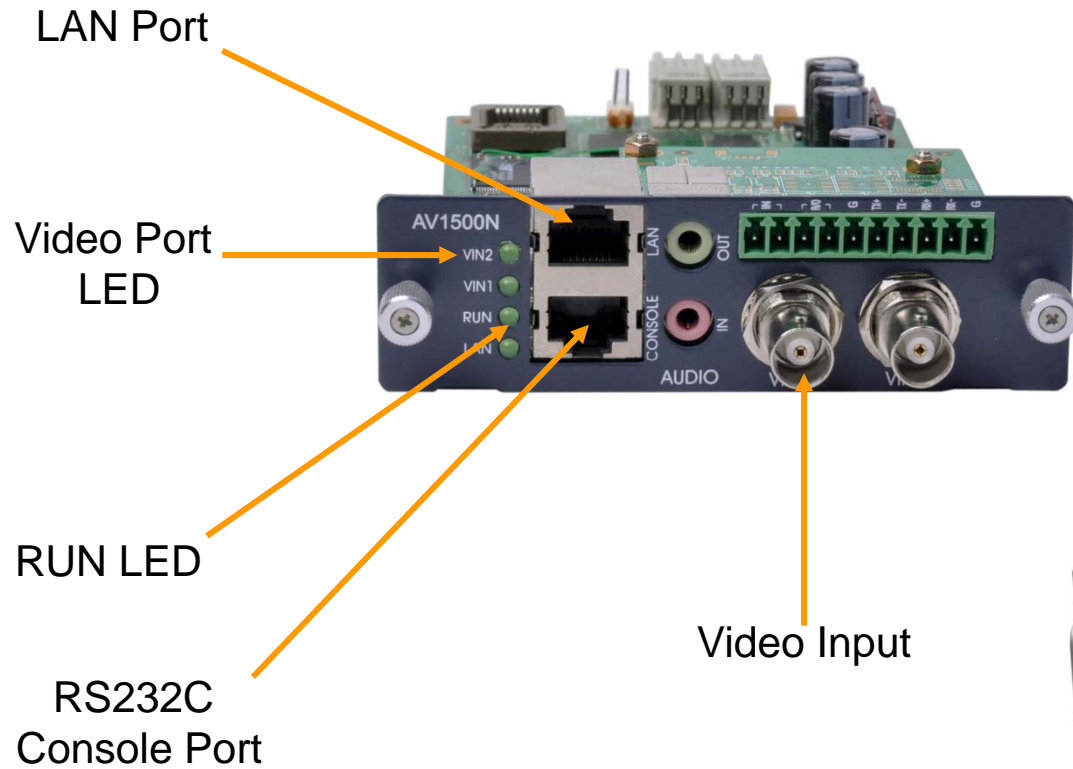
Hardware Specification

- High-end Video Processor Architecture
- Network Interface
 - One(1) 10/100Mbps Fast Ethernet (RJ45)
- Command Line Interface
 - One(1) RS-232C Interface (RJ45)
- Powerful Video Interface
 - Video Input : 2Channel CVBS Video Input(BNC)
 - Port LEDs

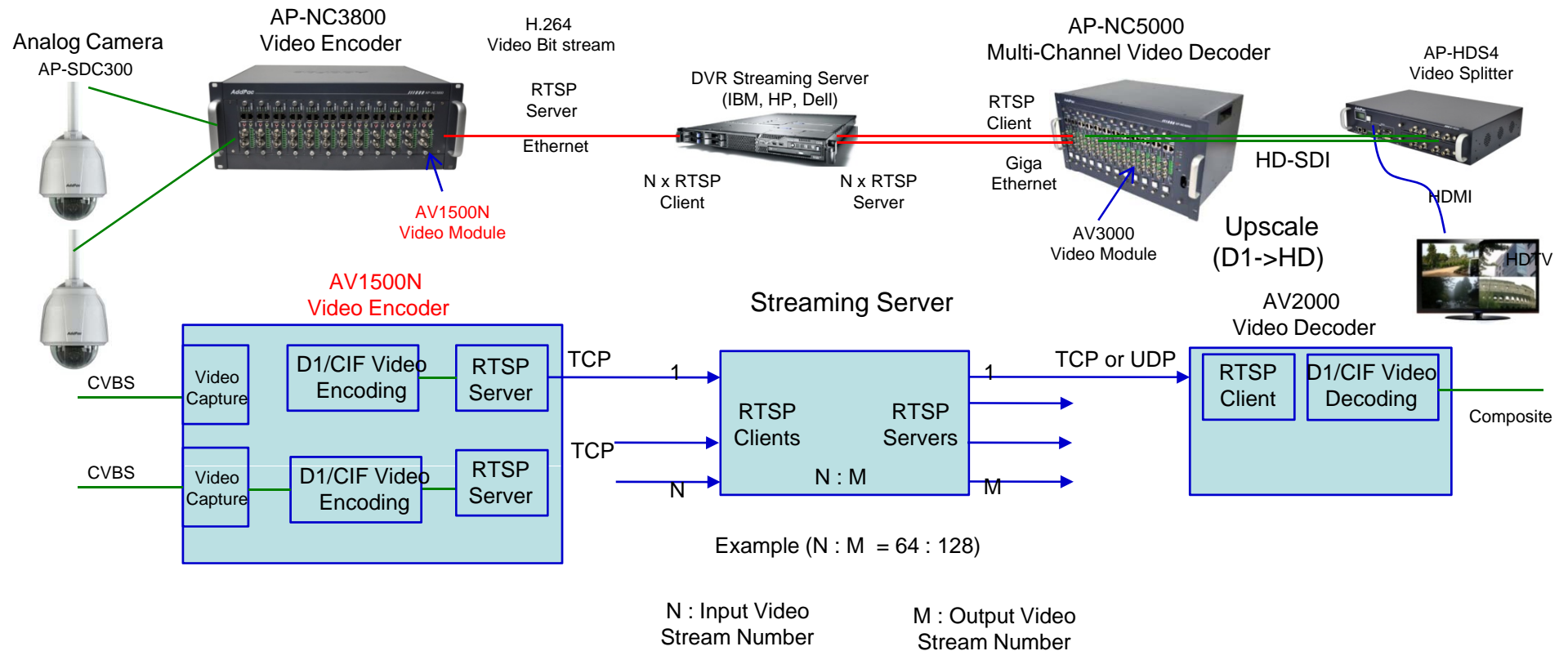
AV1500N D1 Video Codec Modules

Hardware Module Specification (2ch Panel)

AV1500N D1 Video Encoder Module (H.264)



RTSP Service Network Diagram



RTSP Service Features

- Video Encoder Mode
 - RTSP Server Mode
 - Multi-Channel RTSP Server Mode
(D1/CIF Video Encoding Mode, etc)
 - RTSP, TCP Protocol Support for Error Robust Service
 - RTSP, UDP Protocol Support for Real-time Service

Video Codec Service Features

- AV1500N Video Encoder Mode
 - H.264 D1(720x480) 2 Channel Encoding
 - H.264 CIF(352x288) 2 Channel Encoding



Thank you!

AddPac Technology Co., Ltd.
Sales and Marketing

Phone +82.2.568.3848 (KOREA)

FAX +82.2.568.3847 (KOREA)

E-mail sales@addpac.com