

AP-AC20

IP Video Door Phone

High Performance IP Video Door Phone Solution

Interworking with Legacy PBX



AP-AC20

AddPac

AddPac Technology

Sales and Marketing

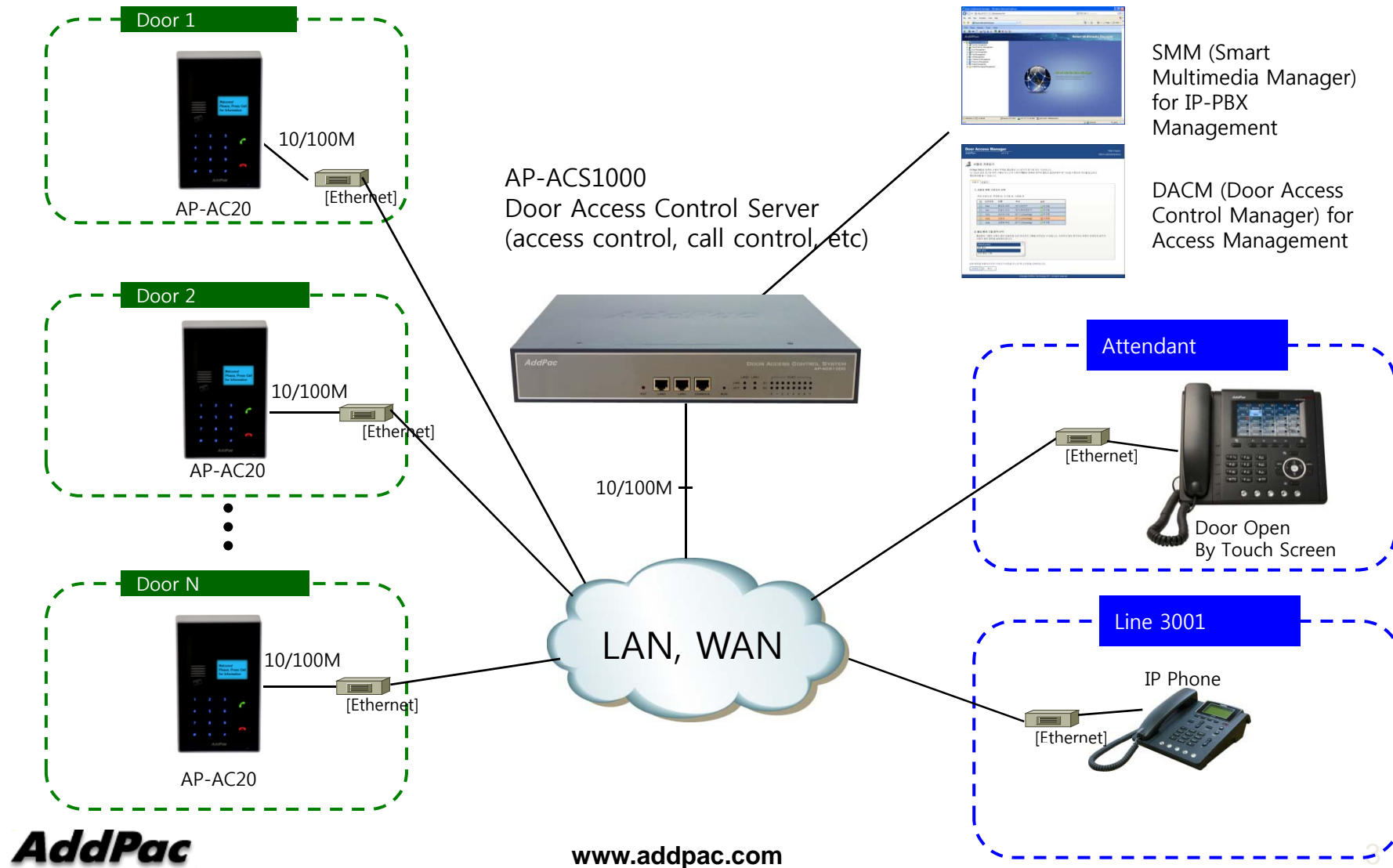
Contents

- AP-AC20 Network Diagram
 - All IP Environment
 - Legacy PBX Environment
- AP1800 VoIP Gateway for Legacy PBX Interworking



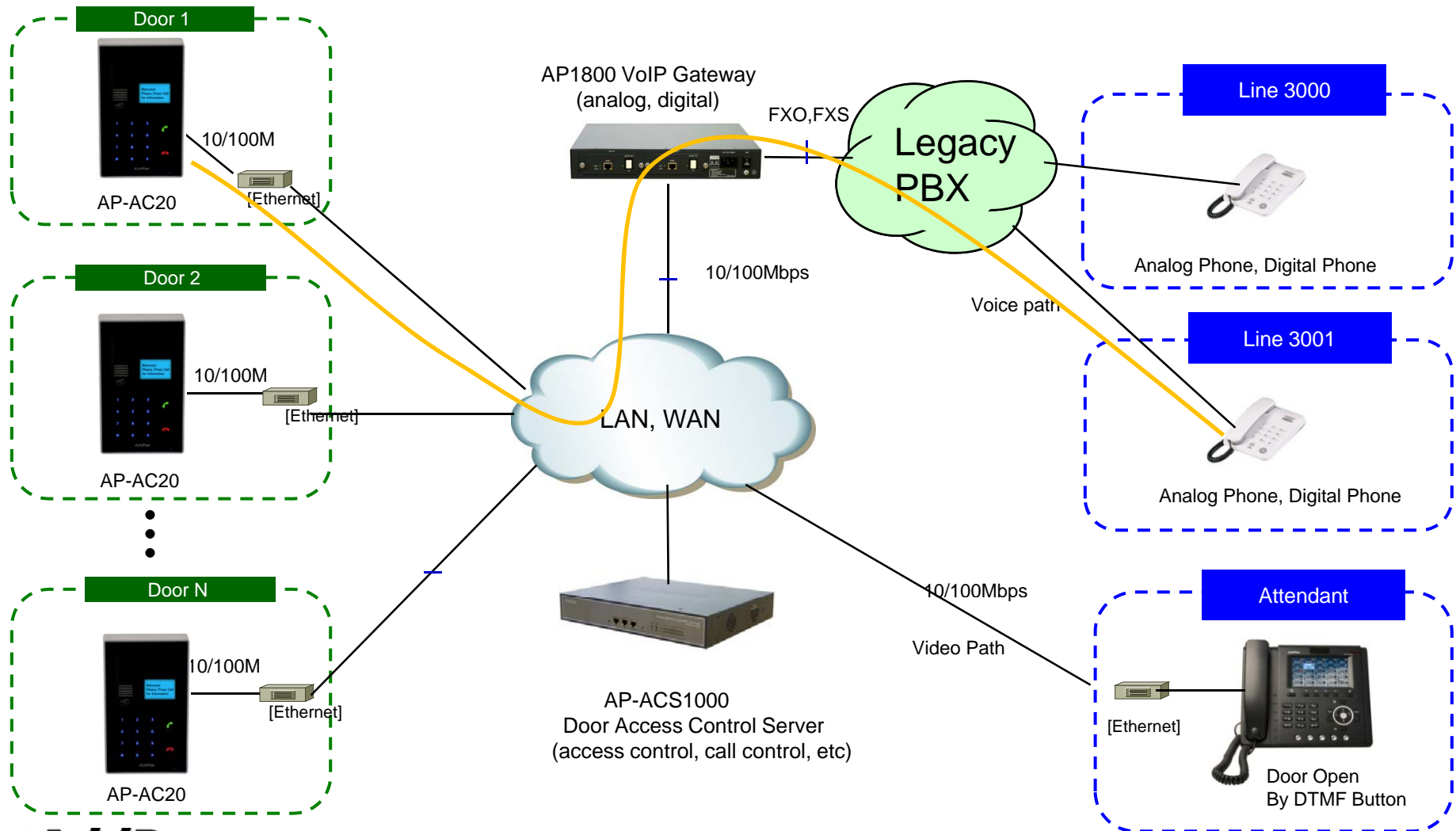
Network Diagram

All IP Environment



Network Diagram

Legacy PBX Environment



AddPac

www.addpac.com



AP1800 VoIP Gateway

Product Overview

AP1800 Analog/Digital VoIP Gateway

- H.323/SIP/MGCP Triple Concurrent Stack Embedded
- High Performance RISC & Programmable DSP Architecture
- Analog/Digital VoIP Gateway Solution
- Various Analog Interface Support : FXS, FXO, E&M
- Digital E1/T1 Interface Support : ISDN-PRI, MFCR2, etc
- Two(2) 10/100Mbps Fast Ethernet (IP Share ,etc)
- High Performance LAN-to-LAN Routing Capability
- G.711/G.726/G.723/G.729, T.38 Fax , VAD, etc
- Powerful Network Protocols (PPPoE, DHCP, Static Routing, etc)
- Firmware Upgradeable Architecture
- VPMS (VoIP Plug&Play Management System) for Large Scale Deployment
- Advanced Voice QoS Mechanism
- Light and Compact Design with Internal Power Supply
- Two(2) VoIP Module Slot
- Hot-Swap Function Support

Hardware Specification

AP1800 Analog/Digital VoIP Gateway

RISC
CPU

High-end
DSP

- RISC Microprocessor Computing Power
- Up to 16 Port Analog VoIP Gateway
- Two(2) VoIP Module Slots (Hot-Swap)
 - 8-Port FXS Card, 8-Port FXO Card, 4-Port FXS 4-Port FXO Card , Digital E1/T1 Card
- Network Interface
 - Two(2) 10/100Mbps Fast Ethernet (RJ45)
- RS232C Console Interface
- Run LED, LAN LED, Port LEDs
- Internal Power Supply

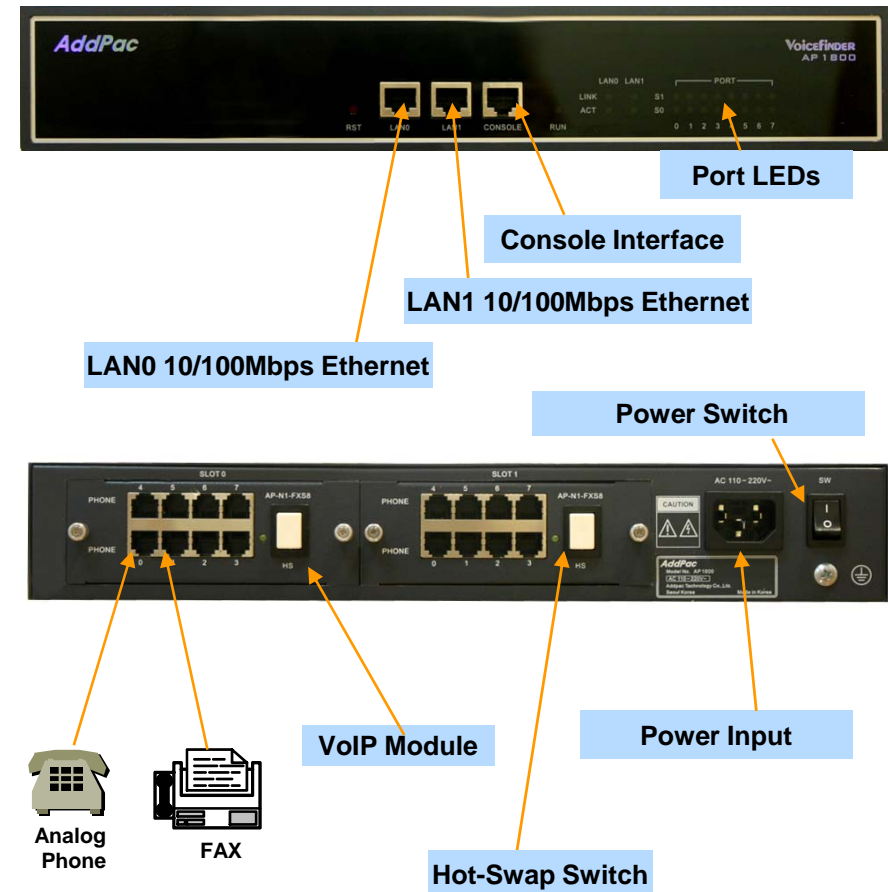
Hardware Specification

AP1800 Analog/Digital VoIP Gateway

Hardware Specifications

| AP1800 VoIP Series | Basic Specifications |
|-----------------------|---|
| Voice Interface | Two(2) VoIP Module Slots AP-N1-FXS8, AP-N1-FXO8, AP-N1-FXS4O4, AP-N1-E1, etc |
| Ethernet Interface | 2-Ports 10/100Mbps Ethernet Interface(RJ-45) |
| Flash Memory | 4Mbyte High-speed Flash Memory |
| Base Memory | 32 Mbyte High-speed SDRAM |
| Power Requirement | Power Supply Adaptor / VAC 110~220V, 50/60Hz, |
| Operating Temperature | 0°C ~ 45°C (32 °F ~ 122°F) |
| Storage Temperature | -40°C ~ 85°C (-40°C ~ 185°F) |
| Relative Humidity | 5% ~ 95% (Non-condensing) |

Network interface Configurations





Thank you!

AddPac Technology Co., Ltd.
Sales and Marketing

Phone +82.2.568.3848 (KOREA)

FAX +82.2.568.3847 (KOREA)

E-mail sales@addpac.com