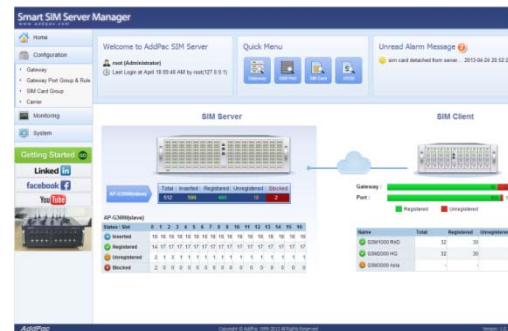




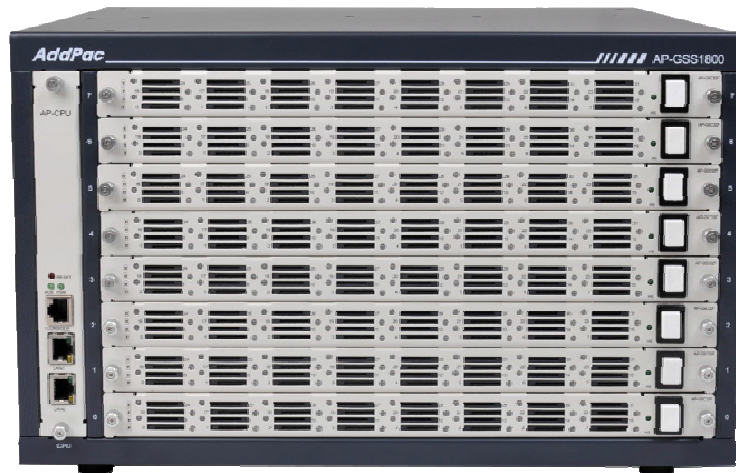
AP-GSS1800

256SIM GSM SIM Server

High Performance GSM SIM Server Solution



SIM Server Stacking



AddPac

AddPac Technology

2013, Sales and Marketing

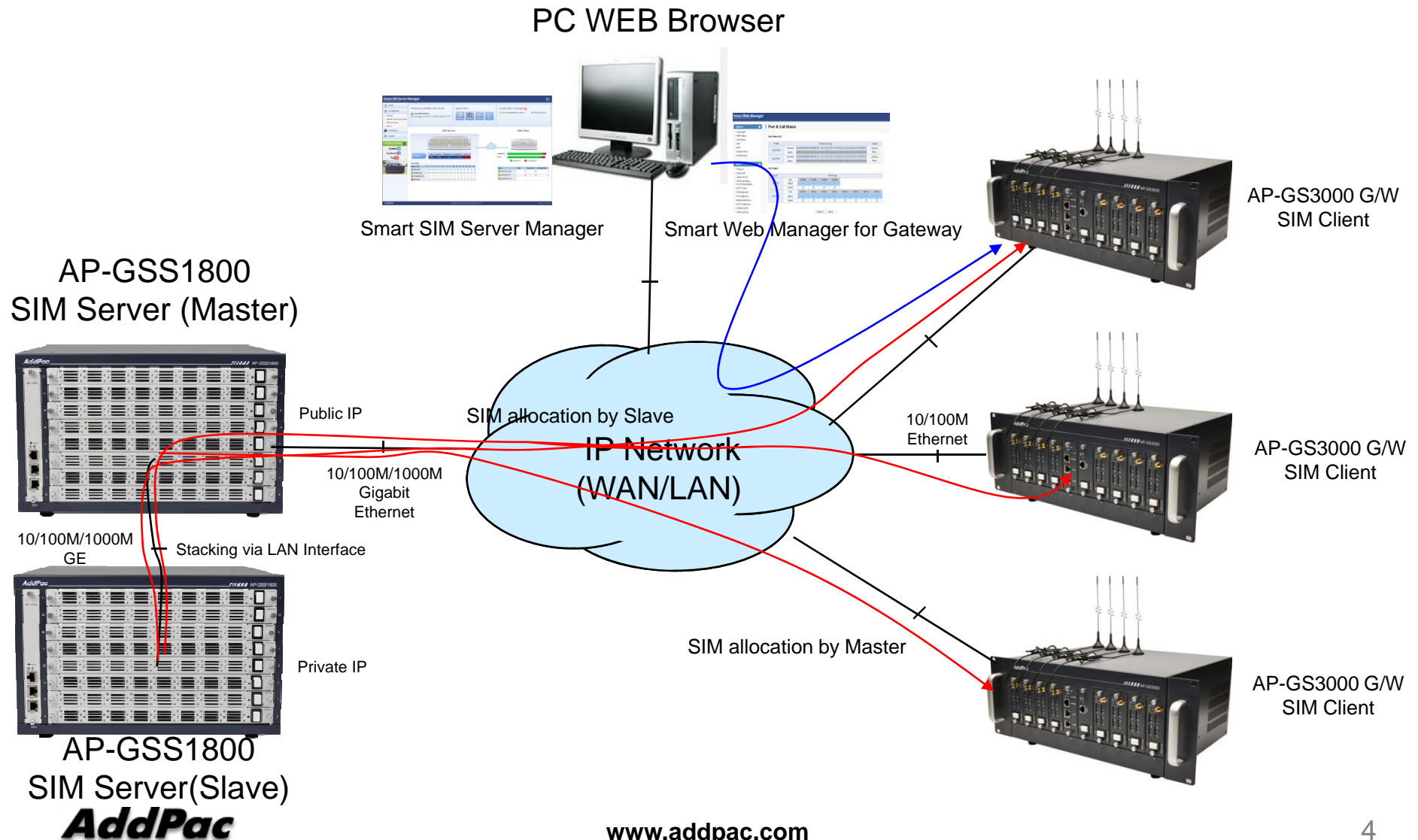
Contents

- Main Features
- SIM Server Stacking Network Diagram
 - CASE 1 : Master 1 + Slave 1
 - CASE 2 : Master 1 + Slave 2
- Smart Web Manager for SIM Server (Stacking Example)
 - Main
 - Configuration
 - Monitoring

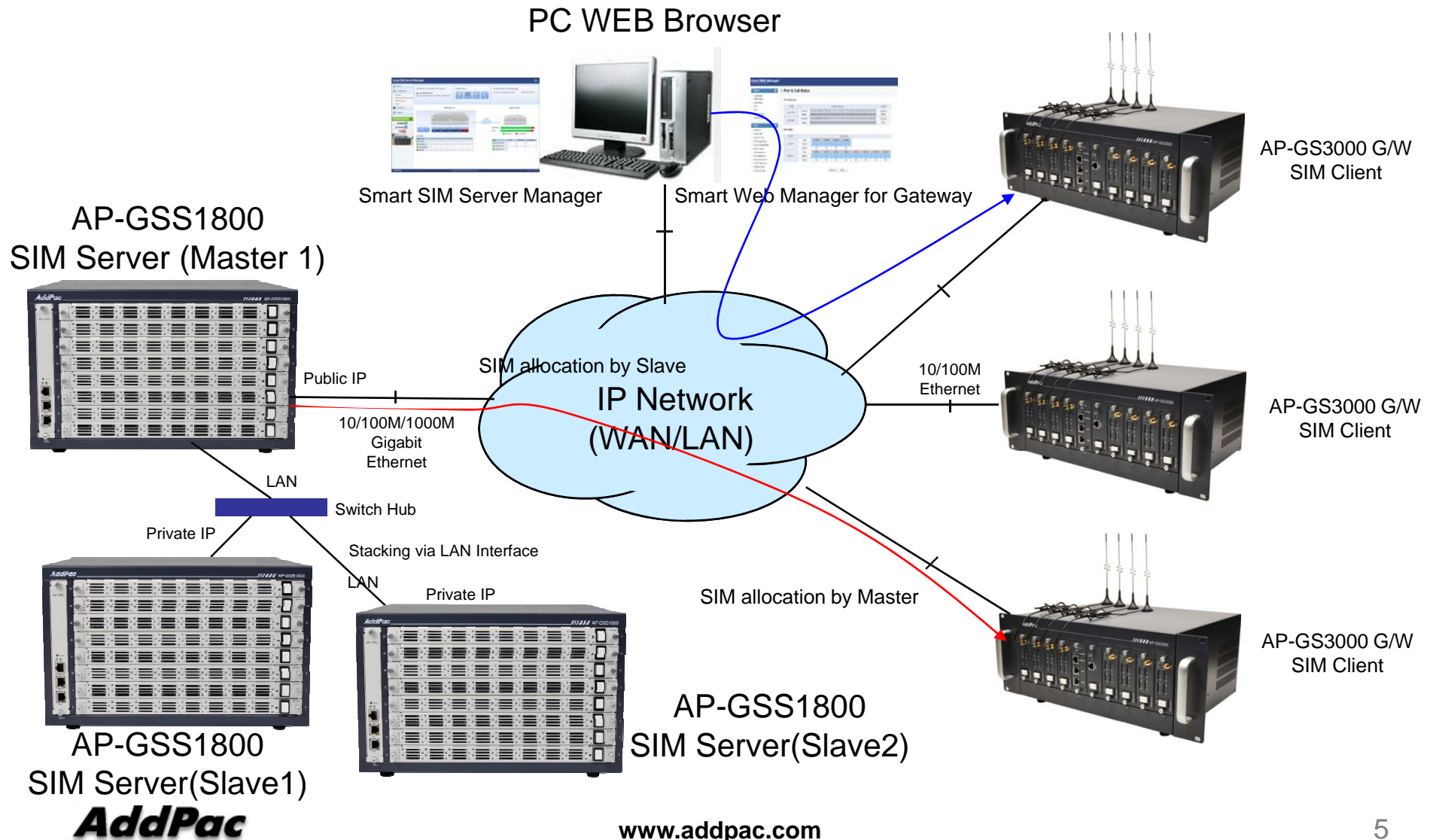
Main Features

- SIM resources are extended to SIM Server Slaves.
- All SIM resources are managed by SIM Server Master.
- Support flexible SIM resource configuration.
(master & slave SIM Server resources can be set to same SIM group)
- Minimize Inter-communication packets between master and slaves for effective communication cost.
- Support user-friendly menu and easy configuration for SIM Sever stacking.
(auto SIM Server Slave provisioning by registration)

SIM Server Stacking Network Diagram (Master 1+ Slave 1)



SIM Server Stacking Network Diagram (Master 1+ Slave 2)



Main – SIM Server

Smart SIM Server Manager
www.addpac.com

Home
Configuration
Monitoring
Gateway
Gateway Port
SIM Card
USSD Service
System


Getting Started GO
LinkedIn
facebook
YouTube

Welcome to AddPac SIM Server
root (Administrator)
Last Login at May 24 05:41 PM by root(172.16.1.18)

Quick Menu
Gateway G/W Port SIM Card USSD

Unread Alarm Message 2
sim server 172.16.10.2 registered this server... 2013-05-25 02:24:15
new sim card group defined !... 2013-05-25 01:50:46


SIM Server



GSS1500_G2	Total	Inserted	Registered	Unregistered	Blocked
GSS1500_G2	254	24 / 254	4 / 254	0 / 254	0 / 254
GSS1500_G2	514	28 / 514	0 / 514	0 / 514	0 / 514

GSS1500_G2	Status \ Slot	0	1	2	3	4	5	6	7
GSS1500_G2	Inserted	0	16	8	0	0	0	0	0
	Registered	0	4	0	0	0	0	0	0
	Unregistered	0	0	0	0	0	0	0	0
	Blocked	0	0	0	0	0	0	0	0

SIM Client



Gateway : 1
Port : 4

Registered Unregistered

Name	Total	Registered	Unregistered
gateway_test	36	4	32

Server Summary Information
shows sim card status such as registered, blocked and inserted(installed) count of Master SIM server and other Slave SIM servers

Detailed Sim Card Status
shows sim card detail status for each slot/port if you click Master SIM server and Slave SIM server button

AddPac
Copyright © AddPac 1999-2013 All Rights Reserved
Version: 1.0.130509

Configuration – SIM Server

Smart SIM Server Manager
www.addpac.com

Home
Configuration
Gateway
Gateway Port Group & Rule
SIM Card Group
SIM Server
Carrier
Monitoring
System
Getting Started GO
Linked in
facebook f
YouTube

SIM Server
Add SIM Server Refresh

	Modify	Delete	Name	Description	Status	IP Address	SIM Count
1			GSS1500_G2	default array	Registered	0.0.0.0	256
2			GSS1500_G2	stacked server #1	Registered	172.16.9.3	256

SIM Server
shows Master SIM Server and other Slave SIM server list and also each Slave(Stacked) SIM server try to register to the Master SIM server which authenticates server.

AddPac
Copyright © AddPac 1999-2013 All Rights Reserved
Version: 1.0.130509

Configuration – SIM Server

Smart SIM Server Manager
www.addpac.com

Home
Configuration
Gateway
Gateway Port Group & Rule
SIM Card Group
SIM Server
Carrier
Monitoring
System

Add SIM Server
Apply Cancel

General

Name *	<input type="text" value="slave sim server #1"/>
Description	<input type="text" value="this is stacked server"/>
ID *	<input type="text" value="root"/> <input type="button" value="Check ID"/>
Password *	<input type="password" value="....."/>

Description

This is a SIM server which has lots of SIM (Subscriber Identification Module) cards. Multiple SIM servers can be added by stacking and a Master SIM server has a role of saving configuration and managing all SIM cards of Slave SIM servers as well as Master SIM server.

Add SIM Server
Administrator can add new Slave SIM server if more SIM cards need to be used. Master SIM server authenticates new SIM server using ID & password login procedure.

AddPac
Copyright © AddPac 1999-2013 All Rights Reserved
Version: 1.0.130509

Monitoring – SIM Server

Smart SIM Server Manager
www.addpac.com

Home
Configuration
Monitoring
Gateway
Gateway Port
SIM Card
USSD Service
System

Getting Started GO
Linked in
facebook f
YouTube

SIM Cards

SIM Card Group Carrier Clear SIM Control USSD Service

Search: SIM Server All Refresh

GSS1500_G2_Master
GSS1500_G2_Slave

Card	Description	SIM Server	SIM Card Group	Carrier	EN	Assigned G/W	Assigned Port	Hardware Stati	Operation Stati	Admin Status	Call Duration	Duration(min)
0/0		GSS1500_G2_Master	sim_group	SKT_Carrier	490154203237518	gateway_test	0/0	Attached	Idle	Unblocked		
0/0		GSS1500_G2_Slave	sim_group					Attached	Idle	Unblocked		
0/1		GSS1500_G2_Slave						Not Equip...	Idle	Unblocked		
0/1		GSS1500_G2_Slave	sim_group					Attached	Idle	Unblocked		
0/2		GSS1500_G2_Slave						Not Equip...	Idle	Unblocked		
0/2		GSS1500_G2_Slave						Attached	Idle	Unblocked		
0/3		GSS1500_G2_Slave						Not Equip...	Idle	Unblocked		
0/3		GSS1500_G2_Slave	sim_group					Attached	Idle	Unblocked		
0/4		GSS1500_G2_Master						Not Equip...	Idle	Unblocked		
0/4		GSS1500_G2_Slave	sim_group					Attached	Idle	Unblocked		
0/5		GSS1500_G2_Master						Not Equip...	Idle	Unblocked		
0/5		GSS1500_G2_Slave	sim_group					Attached	Idle	Unblocked		
0/6		GSS1500_G2_Master						Not Equip...	Idle	Unblocked		
0/6		GSS1500_G2_Slave	sim_group					Attached	Idle	Unblocked		
0/7		GSS1500_G2_Master						Not Equip...	Idle	Unblocked		
0/7		GSS1500_G2_Slave	sim_group					Attached	Idle	Unblocked		
0/8		GSS1500_G2_Master						Not Equip...	Idle	Unblocked		
0/8		GSS1500_G2_Slave						Attached	Idle	Unblocked		
0/9		GSS1500_G2_Master						Not Equip...	Idle	Unblocked		

Page 1 of 31 Total: 768

AddPac Copyright © AddPac 1999-2013 All Rights Reserved Version: 1.0.130509

SIM Server
monitors status of SIM card allocation to the gateway port and various mobile information(call duration, balance reply) for each SIM server (master and slave)



Thank you!

AddPac Technology Co., Ltd.
Sales and Marketing

Phone +82.2.568.3848 (KOREA)

FAX +82.2.568.3847 (KOREA)

E-mail : sales@addpac.com