

# SIM Server Solution for SMS Application



***AddPac***

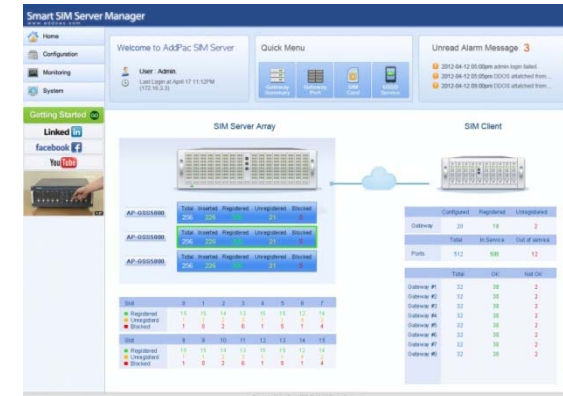
**AddPac Technology**

Sales and Marketing

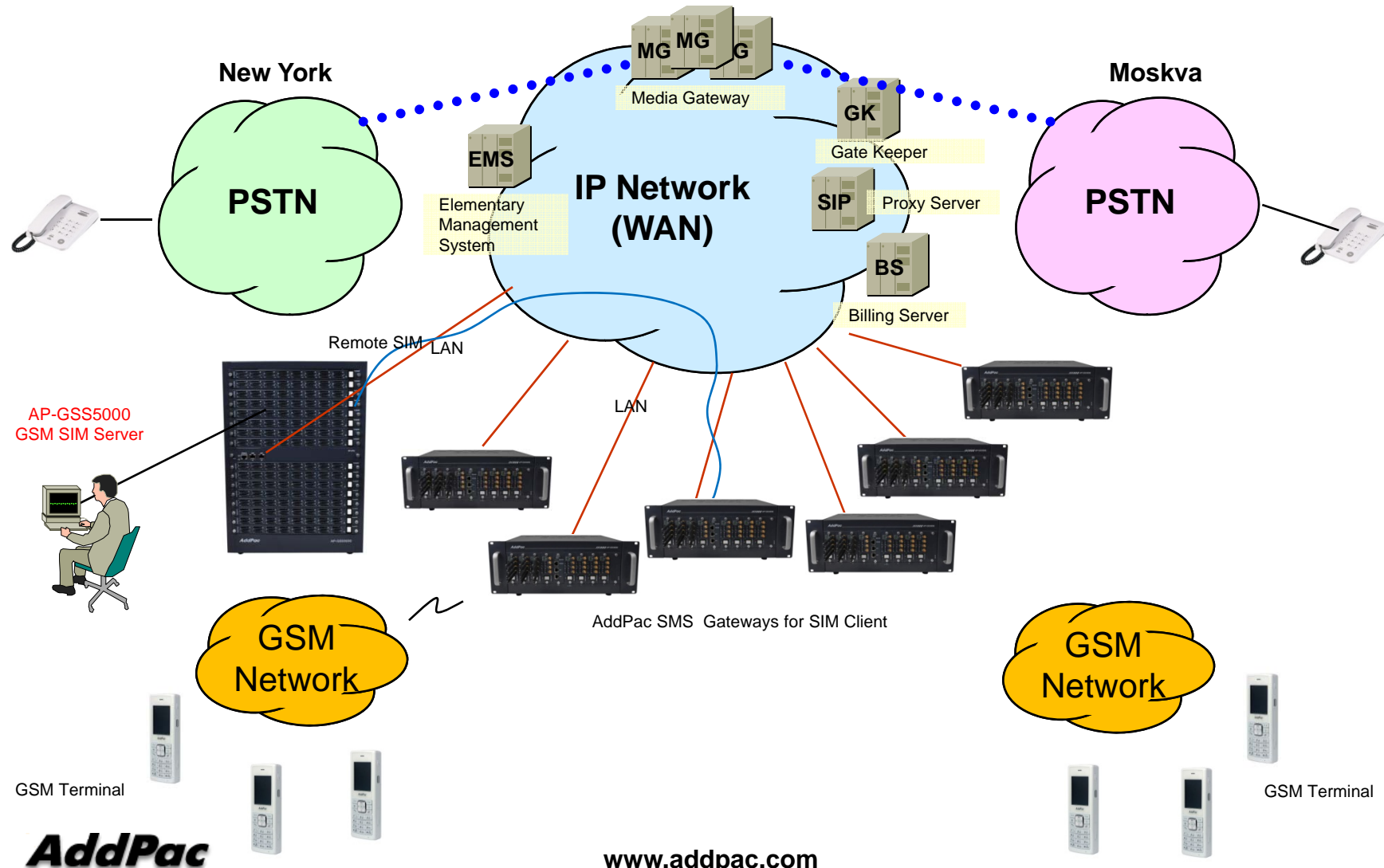
[www.addpac.com](http://www.addpac.com)

# Contents

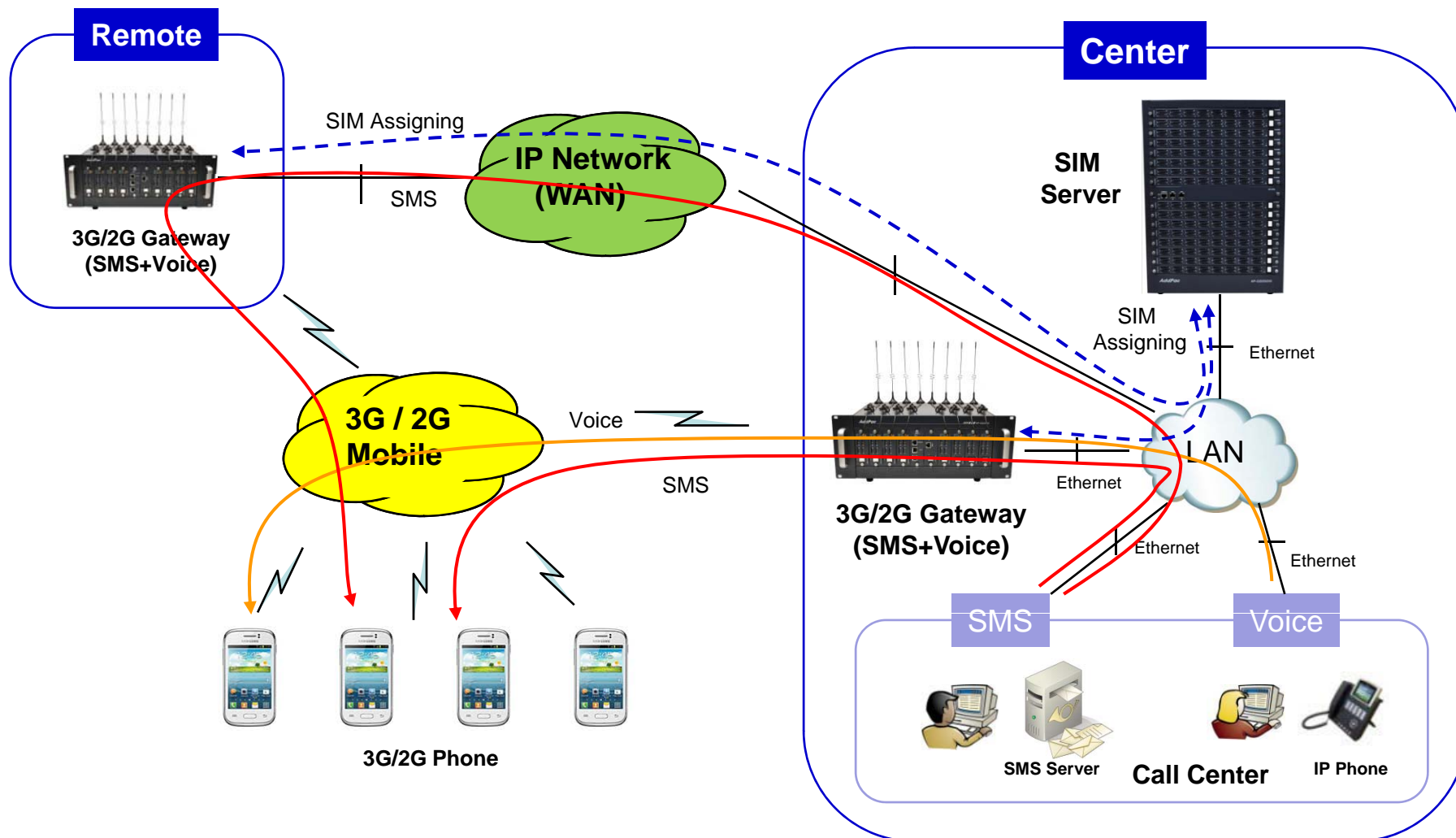
- SIM Server Service Diagram
- SIM Server + SMS Gateway Diagram
- Advantage of Using SIM Server
- SIM Server Series
  - AP-GSS5000(512 SIM)
  - AP-GSS1800(256 SIM)
  - AP-GSS1200(128 SIM)
- SMS Gateways for SIM Client



# SIM Server Service Diagram for SMS App.



# SMS Gateway + SIM Server Service Diagram






# Advantages of Using SIM Server


	Without SIM Server	With SIM Server
Maximum number of SMS per day	<p><b>Fixed</b></p> <p>Depends on Number of Ports of 3G Gateway</p> <p>For example,</p> <ul style="list-style-type: none"> <li>• Condition:           <ul style="list-style-type: none"> <li>- 16 port gateway</li> <li>- 100 SMS day quota per SIM</li> </ul> </li> <li>• Result           <ul style="list-style-type: none"> <li>- 16 x 100 = <b>1600</b> SMS/day</li> </ul> </li> </ul>	<p><b>Expandable</b></p> <p>Depends on Number of SIM Cards of SIM Server</p> <p>For example,</p> <ul style="list-style-type: none"> <li>• Condition:           <ul style="list-style-type: none"> <li>- 16 port gateway</li> <li>- 100 SMS day quota per SIM</li> <li>- <b>512 SIM Cards Server</b></li> </ul> </li> <li>• Result           <ul style="list-style-type: none"> <li>- 512 x 100 = <b>51200</b> SMS/day</li> </ul> </li> <li>• <i>More Advantage</i> <ul style="list-style-type: none"> <li>- SIMs are simply extended by stacking of SIM server.</li> </ul> </li> </ul>
Service Reliability	<p><b>Bad</b></p> <p>3G port block and SIM block makes unreliable service</p>	<p><b>Good</b></p> <p>Blocked SIM card can be replaced by others.</p>
Quota Management	<p><b>Difficult</b></p> <p>3<sup>rd</sup> Party SMS Server should manage SMS quota.</p>	<p><b>Easy</b></p> <p>SIM server can manage SMS quota efficiently.</p>



# GSM SIM Server Series

# GSM SIM Server Comparison Table

Model	AP-GSS5000	AP-GSS1800	AP-GSS1200
			
Available Modules	AP-GSC32F AP-CPU AP-POWER	AP-GSC32F AP-CPU	AP-GSC32F AP-CPU
SIM Bank Module	AP-GSC32F : 32 SIM, Front Insertion Type, Single SIM base exchange, Hot-Swap	AP-GSC32F : 32 SIM, Front Insertion Type, Single SIM base exchange, Hot-Swap	AP-GSC32 F: 32 SIM, Front Insertion Type, Single SIM base exchange, Hot-Swap
Total SIM Cards	Up to 512 SIM	Up to 256 SIM	Up to 128 SIM
SIM Bank Module Slot	Sixteen(16) Module Slots for AP-GSC32F	Octal(8) Module Slots for AP-GSC32F	Quad(4) Module Slots for AP-GSC32F
LAN Port	2	2	2
Console	1	1	1
Power	Module Type Single PSU	Single PSU	Single PSU



# AP-GSS5000 GSM SIM Tower (512 SIM)



# Main Features

## AP-GSS5000 GSM SIM Server

- Sixteen(16) Module Slots for 32ch SIM Bank Module (Up to 32x16=512ch SIM Slot, CPU Module)
  - Front SIM Card Insert Scheme
- High Performance RISC Microprocessor Architecture
- Remote SIM solution for Centralized Management
- Hot-Swap Service for SIM Bank Module
- Powerful Real-time Response Service using Embedded RTOS
- Powerful Network Protocols (PPPoE, DHCP, Static Routing, etc)
- Two(2)10/100/1000Mbps Gigabit Ethernet
- One(1) RS-232C Port for Command Line Interface
- Firmware Upgradeable Architecture
- Smart Web Manager for SIM Server
- Module Type Power Supply

# Hardware Specification

AP-GSS5000 GSM SIM Server

RISC  
CPU

- RISC Microprocessor Computing Power
- High Performance CPU Module
- Sixteen(16) SIM Bank Module Slots
- 32ch GSM SIM Slot Module(AP-GSC32F)
  - 32ch SIM Card Slot
  - SIM Slot Status Port LED
  - Hot-Swap Button
  - Front SIM card insert scheme
- Network Interface
  - Two(2) 10/100/1000Mbps Gigabit Ethernet (RJ45)
- RS232C Console Interface for CLI
- Run LED, LAN LED, Port LEDs
- Module Type Power Supply

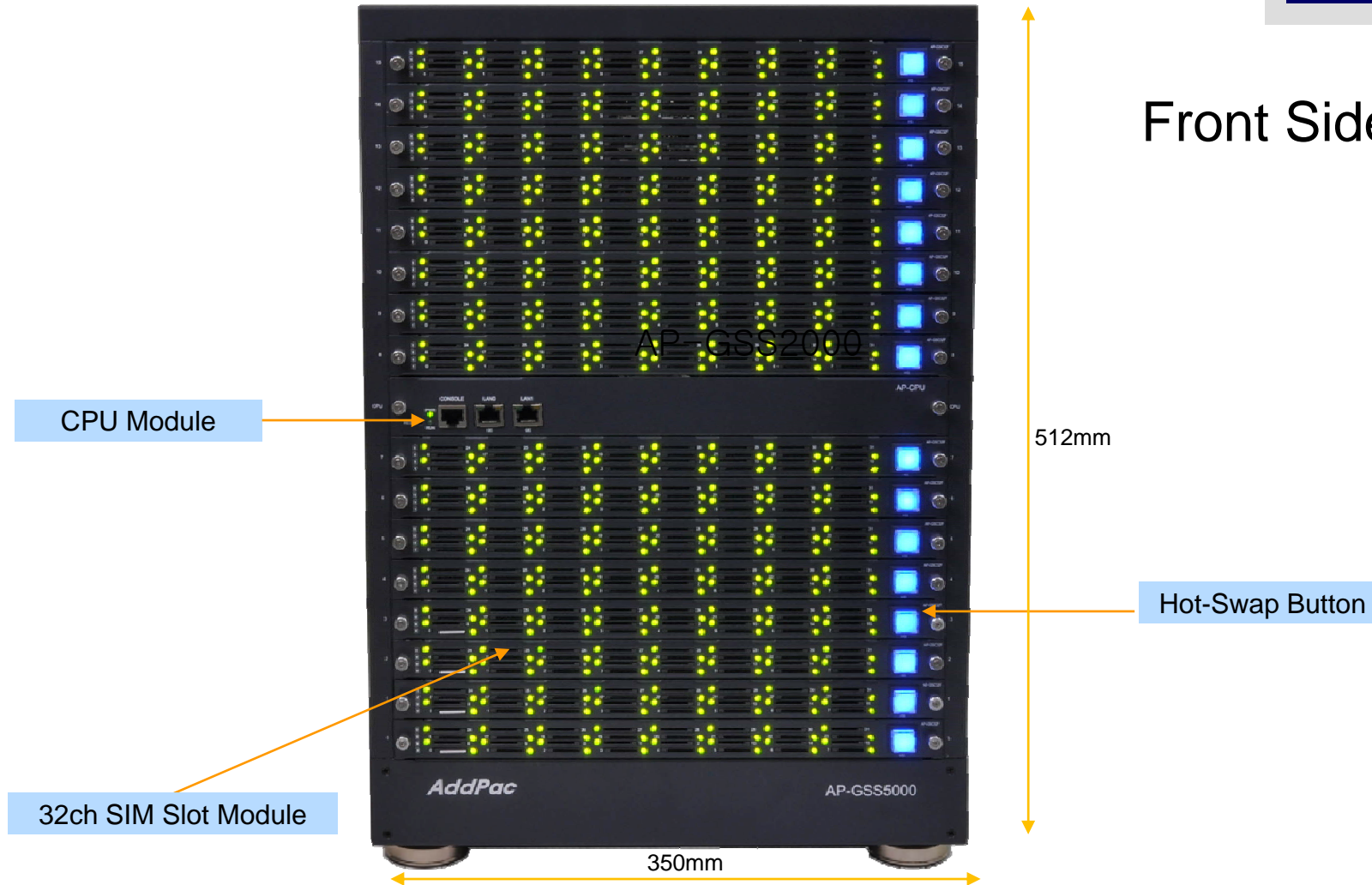


# Hardware Specification

AP-GSS5000 GSM SIM Server

RISC  
CPU

Front Side View



**AddPac**

[www.addpac.com](http://www.addpac.com)

# Hardware Specification

AP-GSS5000 GSM SIM Server

RISC  
CPU

Back Side View



Cooling FAN

Power Module

Power Inlet (110~220V)

Power Switch

**AddPac**

[www.addpac.com](http://www.addpac.com)

# Hardware Specification

AP-GSS5000 GSM SIM Server

## SIM Bank Module

**AP-GSC32F** 32ch GSM SIM Slot Module




SIM Card Slot

SIM Status LED :  
Dual Color LED

Hot-Swap Button

**AddPac**

[www.addpac.com](http://www.addpac.com)



# AP-GSS1800 GSM SIM Server (256 SIM)

# Product Overview

## AP-GSS1800 256ch GSM SIM Server

- Octal(8) Module Slots for 32ch SIM Bank Module  
(Up to  $32 \times 8 = 256$ ch SIM Slot, CPU Module)
  - Front SIM Card Insert Scheme
- High Performance RISC Microprocessor Architecture
- Remote SIM solution for Centralized Management
- SIM Server Stacking Service Support
- Hot-Swap Service for SIM Bank Module
- Powerful Real-time Response Service using Embedded RTOS
- Powerful Network Protocols (PPPoE, DHCP, Static Routing, etc)
- Two(2)10/100/1000Mbps Gigabit Ethernet
- One(1) RS-232C Port for Command Line Interface
- Firmware Upgradeable Architecture
- Smart Web Manager for SIM Server
- Internal Power Supply

# Hardware Specification

AP-GSS1800 256ch GSM SIM Server

RISC  
CPU

- RISC Microprocessor Computing Power
- High Performance CPU Module
- Octal(8) SIM Bank Module Slots
- 32ch GSM SIM Slot Module(AP-GSC32F)
  - 32ch SIM Card Slot
  - SIM Slot Status Port LED
  - Hot-Swap Button
  - Front SIM card insert scheme
- Network Interface
  - Two(2) 10/100/1000Mbps Gigabit Ethernet (RJ45)
- RS232C Console Interface for CLI
- Run LED, LAN LED, Port LEDs
- Internal Power Supply



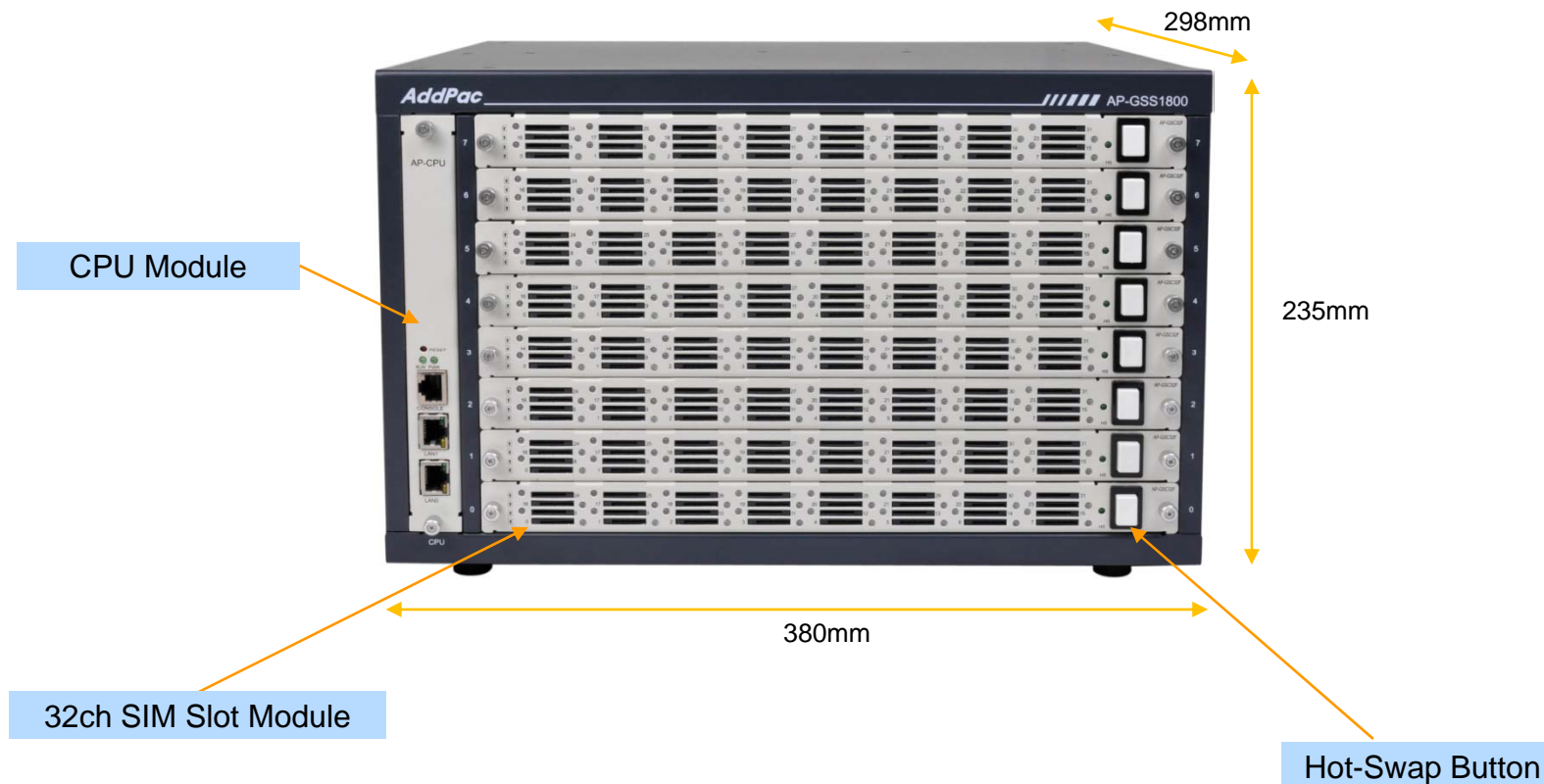


# Hardware Specification

AP-GSS1800 256ch GSM SIM Server

RISC  
CPU

## Front Side View

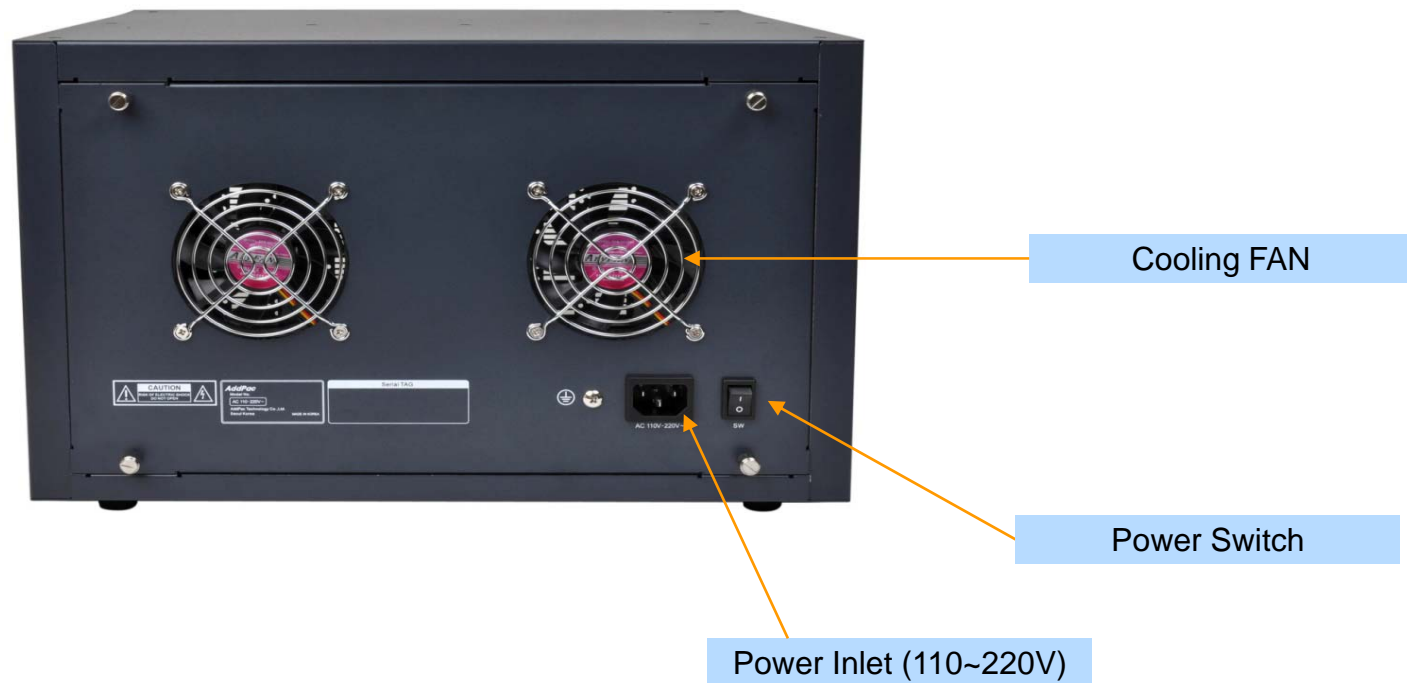


# Hardware Specification

AP-GSS1800 256ch GSM SIM Server

RISC  
CPU

## Back Side View



# Hardware Specification

AP-GSS1800 256ch GSM SIM Server

## SIM Bank Module


**AP-GSC32F** 32ch GSM SIM Slot Module



SIM Card Slot

SIM Status LED :  
Dual Color LED

Hot-Swap Button



# AP-GSS1200 GSM SIM Server (128 SIM)

# Product Overview

## AP-GSS1200 128ch GSM SIM Server

- Quad(4) Module Slots for 32ch SIM Bank Module  
(Up to  $32 \times 4 = 128$ ch SIM Slot, CPU Module)
  - Front SIM Card Insert Scheme
- High Performance RISC Microprocessor Architecture
- Remote SIM solution for Centralized Management
- SIM Server Stacking Service Support
- Hot-Swap Service for SIM Bank Module
- Powerful Real-time Response Service using Embedded RTOS
- Powerful Network Protocols (PPPoE, DHCP, Static Routing, etc)
- Two(2)10/100/1000Mbps Gigabit Ethernet
- One(1) RS-232C Port for Command Line Interface
- Firmware Upgradeable Architecture
- Smart Web Manager for SIM Server
- Internal Power Supply

# Hardware Specification

AP-GSS1200 128ch GSM SIM Server

RISC  
CPU

- RISC Microprocessor Computing Power
- High Performance CPU Module
- Quad(4) SIM Bank Module Slots
- 32ch GSM SIM Slot Module(AP-GSC32F)
  - 32ch SIM Card Slot
  - SIM Slot Status Port LED
  - Hot-Swap Button
  - Front SIM card insert scheme
- Network Interface
  - Two(2) 10/100/1000Mbps Gigabit Ethernet (RJ45)
- RS232C Console Interface for CLI
- Run LED, LAN LED, Port LEDs
- Internal Power Supply

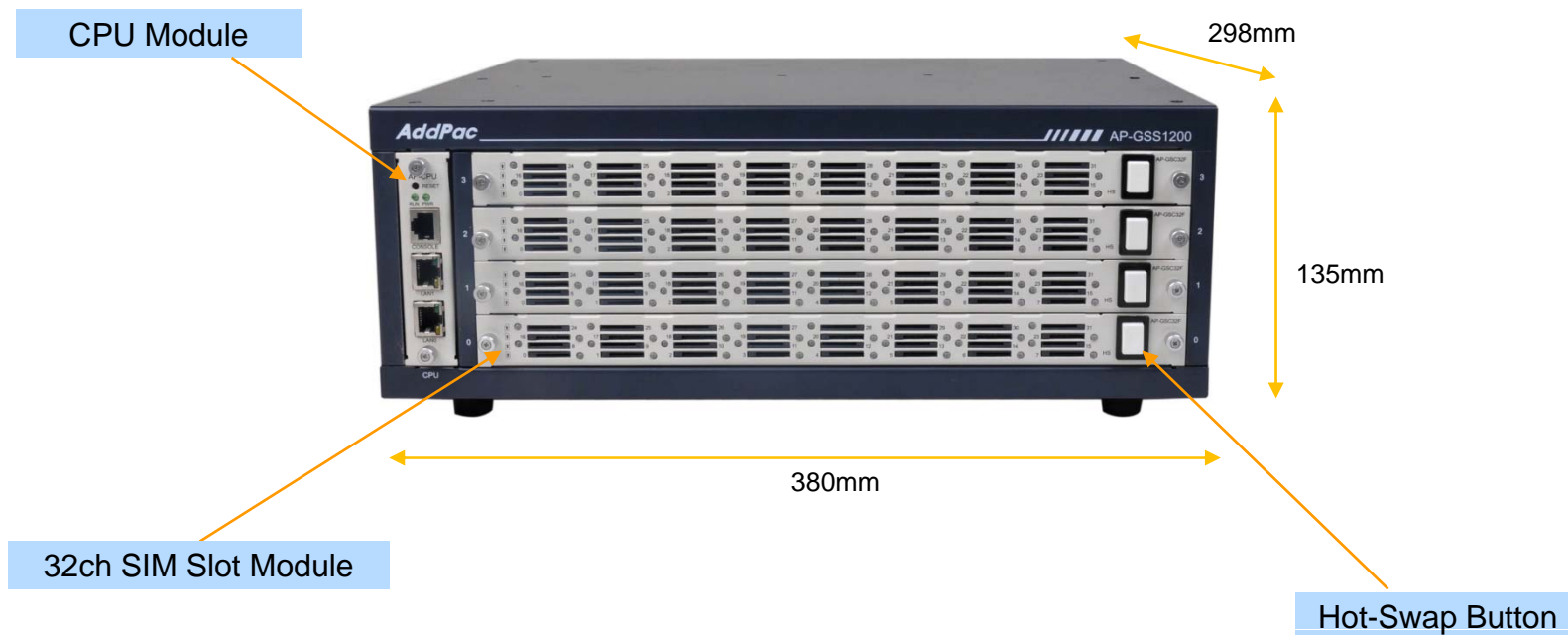


# Hardware Specification

AP-GSS1200 128ch GSM SIM Server

RISC  
CPU

## Front Side View



# Hardware Specification

AP-GSS1200 128ch GSM SIM Server

RISC  
CPU

## Back Side View









# AddPac SMS Gateways for SIM Client

# SMS Gateway Comparison Table

Model	AP-GS2500 	AP-GS3500 
Available Modules	AP-N1-3G4 AP-N1-GSM4 AP-N1-CDMA4 AP-N1-FXS8 AP-N1-FXO8 AP-N1-FXS4O4 AP-N1-E1	AP-N1-3G4 AP-N1-GSM4 AP-N1-CDMA4 AP-N1-FXS8 AP-N1-FXO8 AP-N1-FXS4O4 AP-N1-E1
Mobile Channel	Up to 16 Channel	Up to 36 Channel
Antenna	One(1) / 4 Channel Module	One(1) / 4 Channel Module
Module Slot	Four(4) Module Slots for 3G/2G, E1/T1 Modules	Nine(9) Module Slots for 3G/2G, E1/T1 Modules
LAN Port	2	2
Console	1	1
Power	Single PSU	Dual PSU (module)



# Thank you!

**AddPac Technology Co., Ltd.**  
Sales and Marketing

Phone +82.2.568.3848 (KOREA)

FAX +82.2.568.3847 (KOREA)

E-mail [sales@addpac.com](mailto:sales@addpac.com)