



AP-SMP100

HD Soft Video Phone

High Performance MS-Windows based Video Terminal Solution

HD IP Video Door Phone Interworking Features



AddPac

AddPac Technology

2014, Sales and Marketing

www.addpac.com

Contents

- SIP Video Door Phone Interworking Features
- Network Diagram
- Door Phone Control OSD Software
- Ordering Information

SIP Video Door Phone Interworking Features

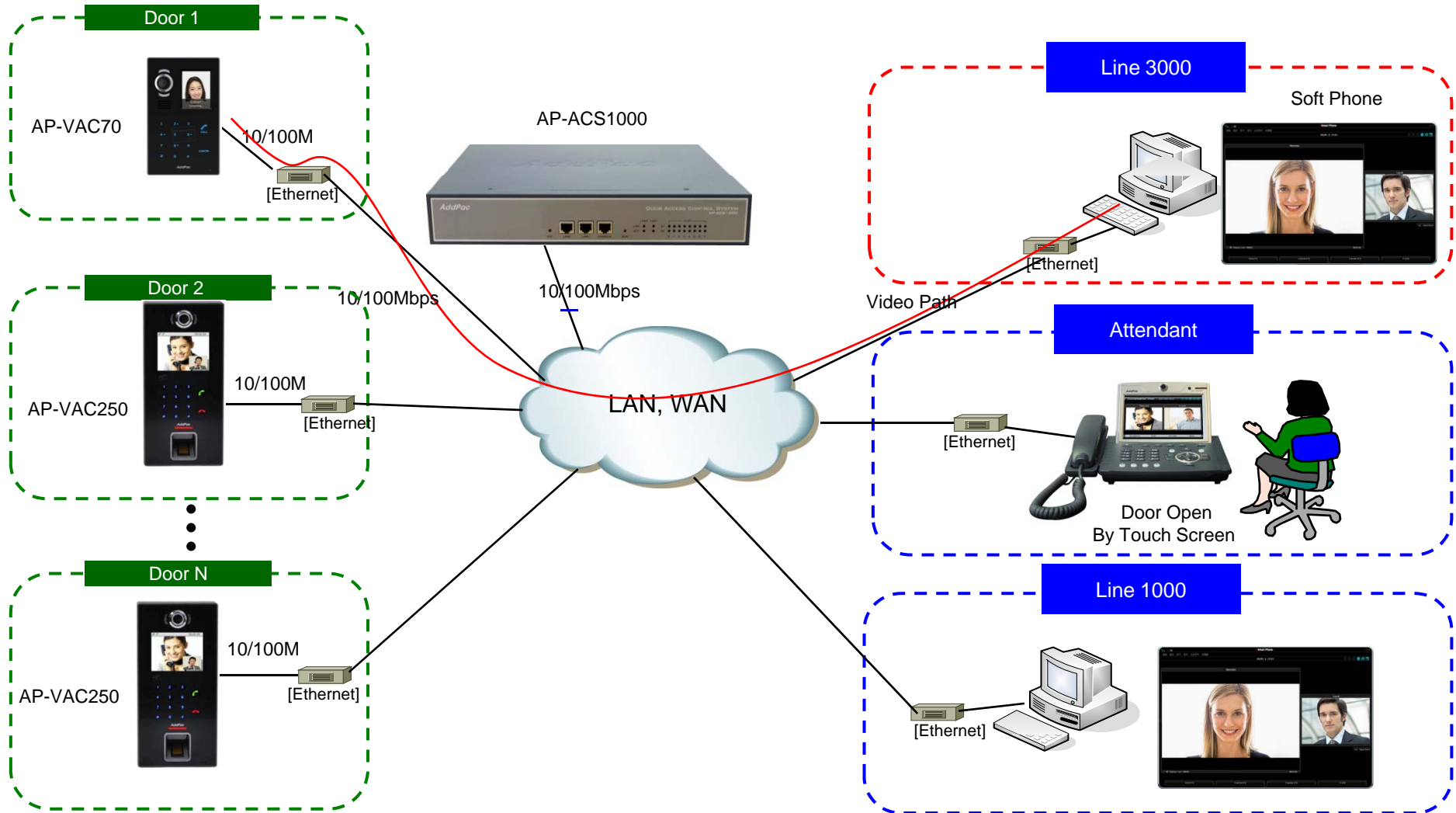
AP-SMP100 HD Soft Video Phone

- Support HD Video Codec
 - MPEC, H.264
 - 720p @ 30 fps
- Support easy door control
 - Configure feature code for controlling SIP Video Door Phone
 - After SIP call connecting, click the 'Door Open' button.
- Support one-way video call (optional)
 - HD soft video phone can see the remote video at outdoor side.
 - User at outdoor side can't see the remote video at indoor side.



Network Diagram

AP-SMP100 HD Soft Video Phone



AddPac

www.addpac.com

HD Resolution

AP-SMP100 HD Soft Video Phone

Support HD Codec

- MPEC, H.264
- 720p @ 30 fps



Door Control OSD

AP-SMP100 HD Soft Video Phone

The image displays the AddPac software interface. On the left is the 'Environment Configuration' window with a sidebar menu. The 'Call' option is highlighted with a red box. The 'Door Open Code' field is also highlighted with a red box and contains the number '1'. A yellow callout box points to this field with the text 'Configure door control feature code'. On the right is a 'Smart Phone' window showing a video call. The 'Local' video feed has a red box around an 'Open Door' button. A yellow callout box points to this button with the text 'Easy Door Control - Click 'open door' button.'.

Ordering Information

- **AP-SMP100 Smart Multimedia SoftPhone**
- **Product Documents**
 - Install and Operation Guide (PDF)
- **Pricing**
 - AddPac Technology Regional Sales Manager
 - Authorized Sales and Marketing Representatives
 - Please Contact www.addpac.com



Thank you!

AddPac Technology Co., Ltd.
Sales and Marketing

Phone +82.2.568.3848 (KOREA)

FAX +82.2.568.3847 (KOREA)

E-mail : sales@addpac.com