

Direct Call(Speed-Dial) Configuration



AddPac

AddPac Technology

2013, Sales and Marketing

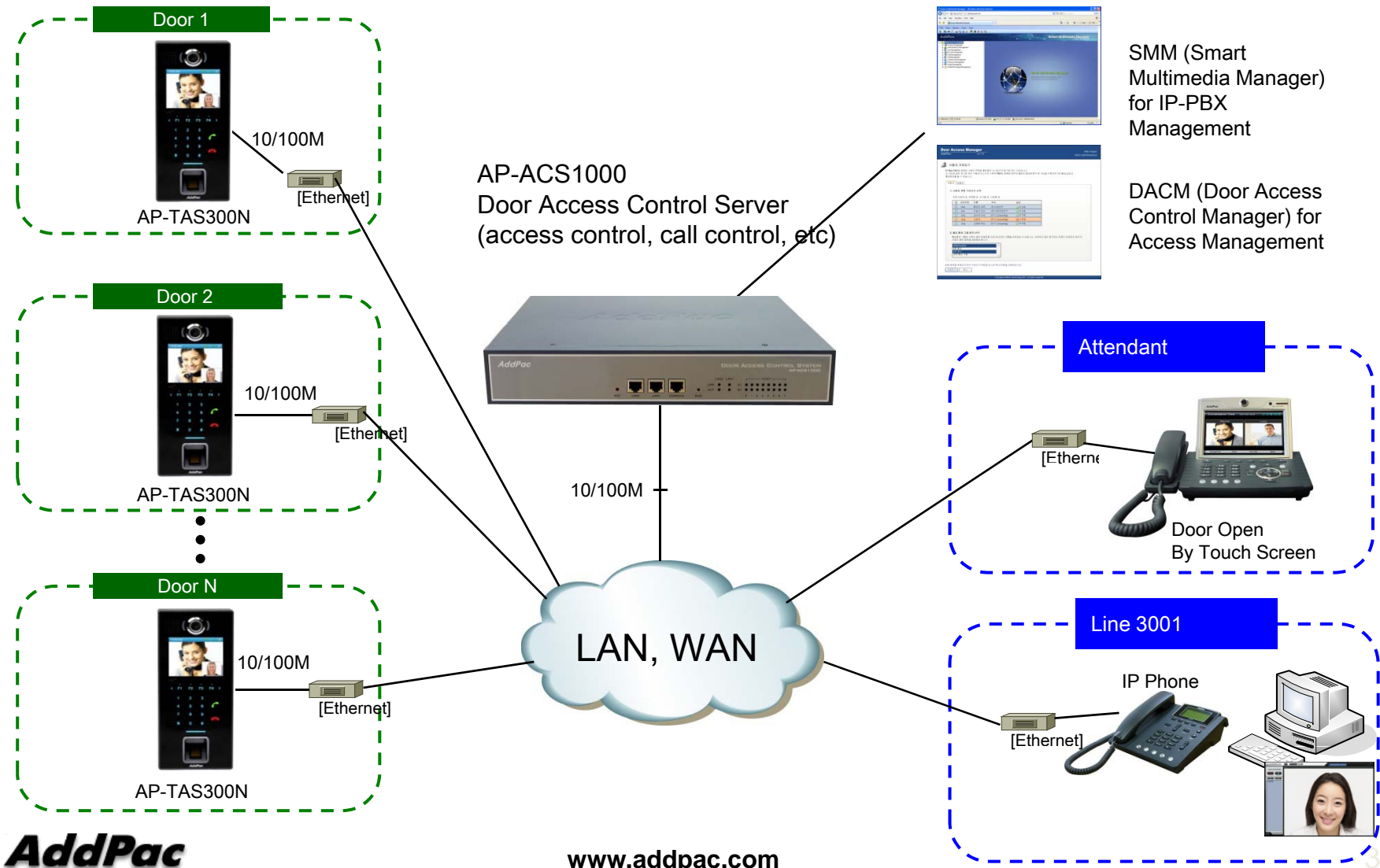
Contents

- Network Diagram
 - Integrated Door Access Control and Call Control
- Direct Call Configuration
 - Smart Web – Speed Dial
- DACS System Message Flow
 - Call Sending for Direct Call



Network Diagram

Integrated Door Access Control and Call Control



Direct Call Configuration

Smart Web – Speed Dial(Direct Call)

Smart Web Manager
www.addpac.com

System

- Language
- LAN Setup
- System Time
- Display Manager
- File Browser

Call & Media

- Server SIP
- Speed Dial**
- Group Dial
- VLC Configuration
- Media
- Simultaneous Call

Door Access Control

- Service Control
- Indoor Open Control
- User List
- Card List
- Card Registration
- Log

Speed Dial

Speed Button Type: List Table Direct

Direct Call: Text Dial

No.	Text	Default Image
1	<input type="text" value="grand stream"/>	
2	<input type="text" value="vp500 a"/>	
3	<input type="text" value="linphone"/>	
4	<input type="text"/>	
5	<input type="text"/>	
6	<input type="text"/>	<input type="text" value="Default Image"/>

Information

AddPac Technology
Model : VAC50_G2
Type : Server-Client
DACS : 172.17.114.20(4080)
DACS Registration : Fail
SIP : 172.17.114.20(5060)
SIP Registration : Fail

Description

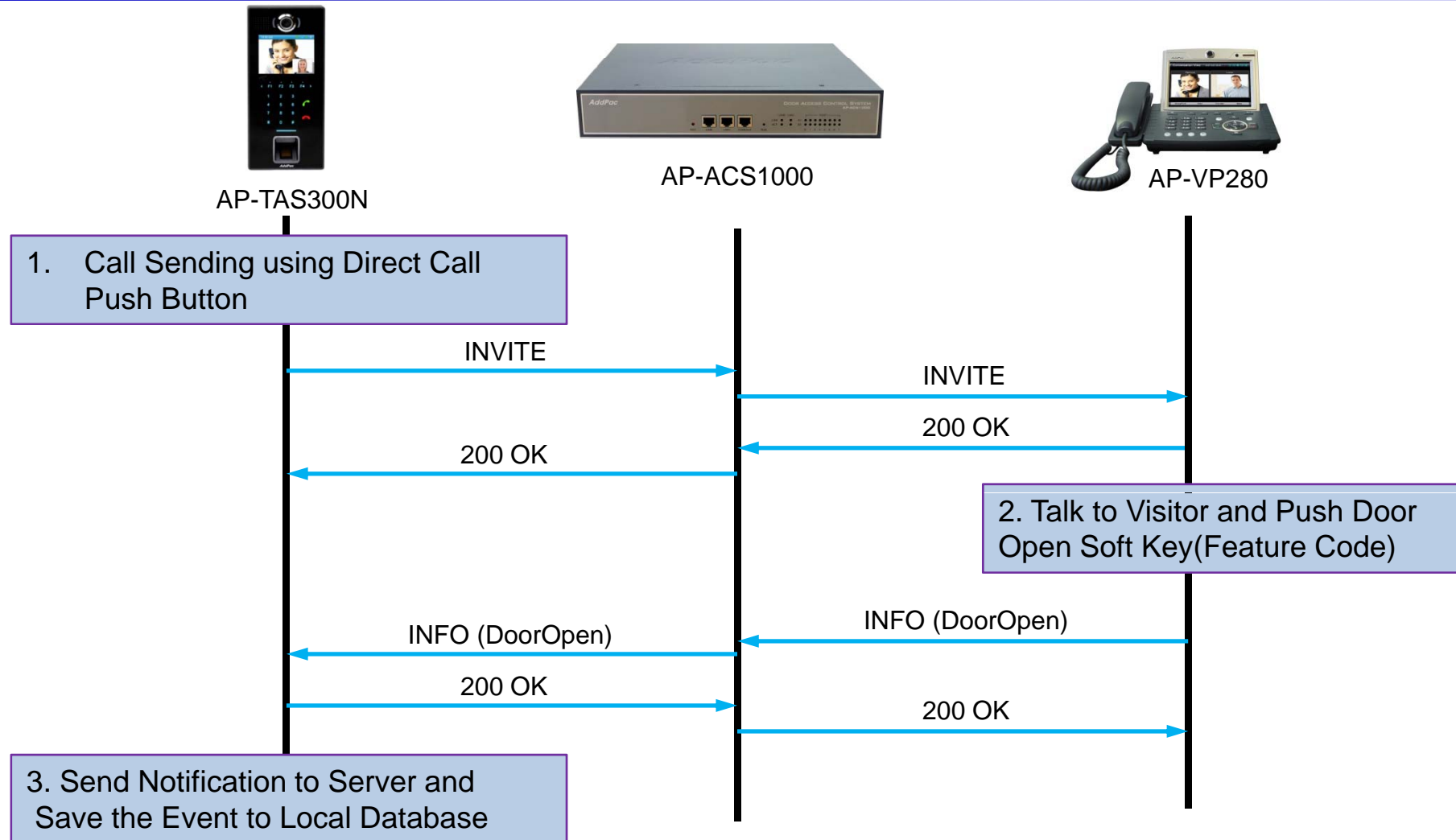
speed dial image, user,

Speed Button Type
Setup the Speed Button Type
List, Table(Button Map), Direct Call

Direct Call
Able to use Direct Call on Menu Screen
Text, Dial

DACS System Message Flow

Call Sending for Direct Call





Thank you!

AddPac Technology Co., Ltd.
Sales and Marketing

Phone +82.2.568.3848 (KOREA)

FAX +82.2.568.3847 (KOREA)

E-mail sales@addpac.com