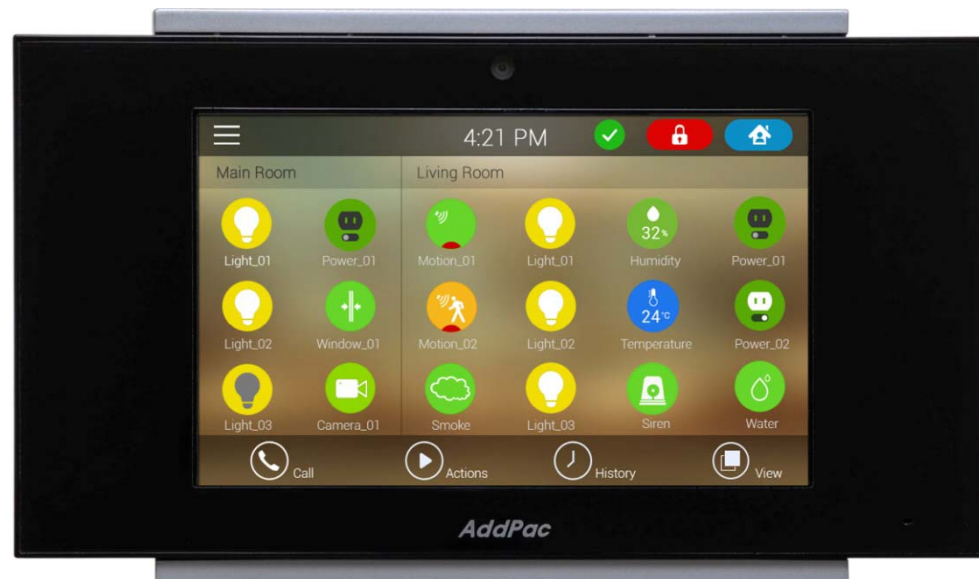


# AP-VWP150 and AP-VWP100 Comparison (Difference Between Dual LAN and Single LAN Device)



**AddPac**

**AddPac Technology**

2015, Sales and Marketing



[www.addpac.com](http://www.addpac.com)

# Contents

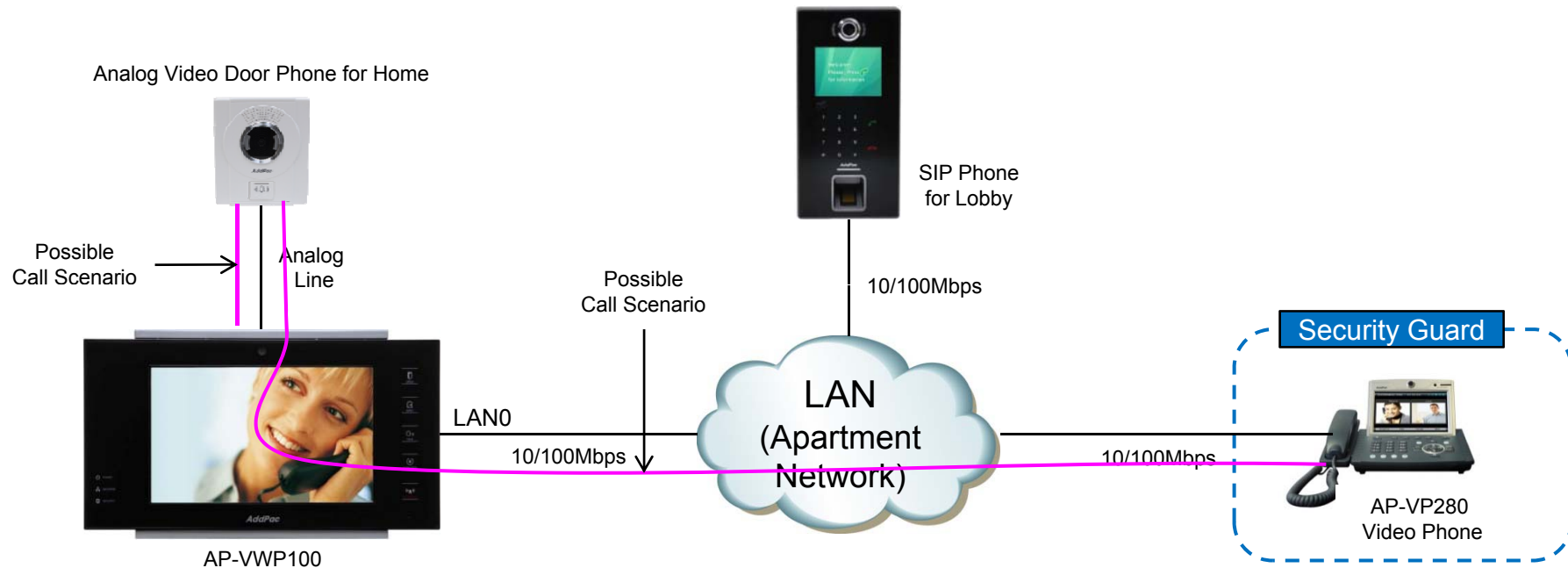
- AP-VWP150 and AP-VWP100 Comparison Table
- AP-VWP100 Single LAN Device Scheme
- AP-VWP100 Dual LAN Device Scheme
- AP-VWP150 Network Service Diagram
- Hardware Specification
- Ordering Information



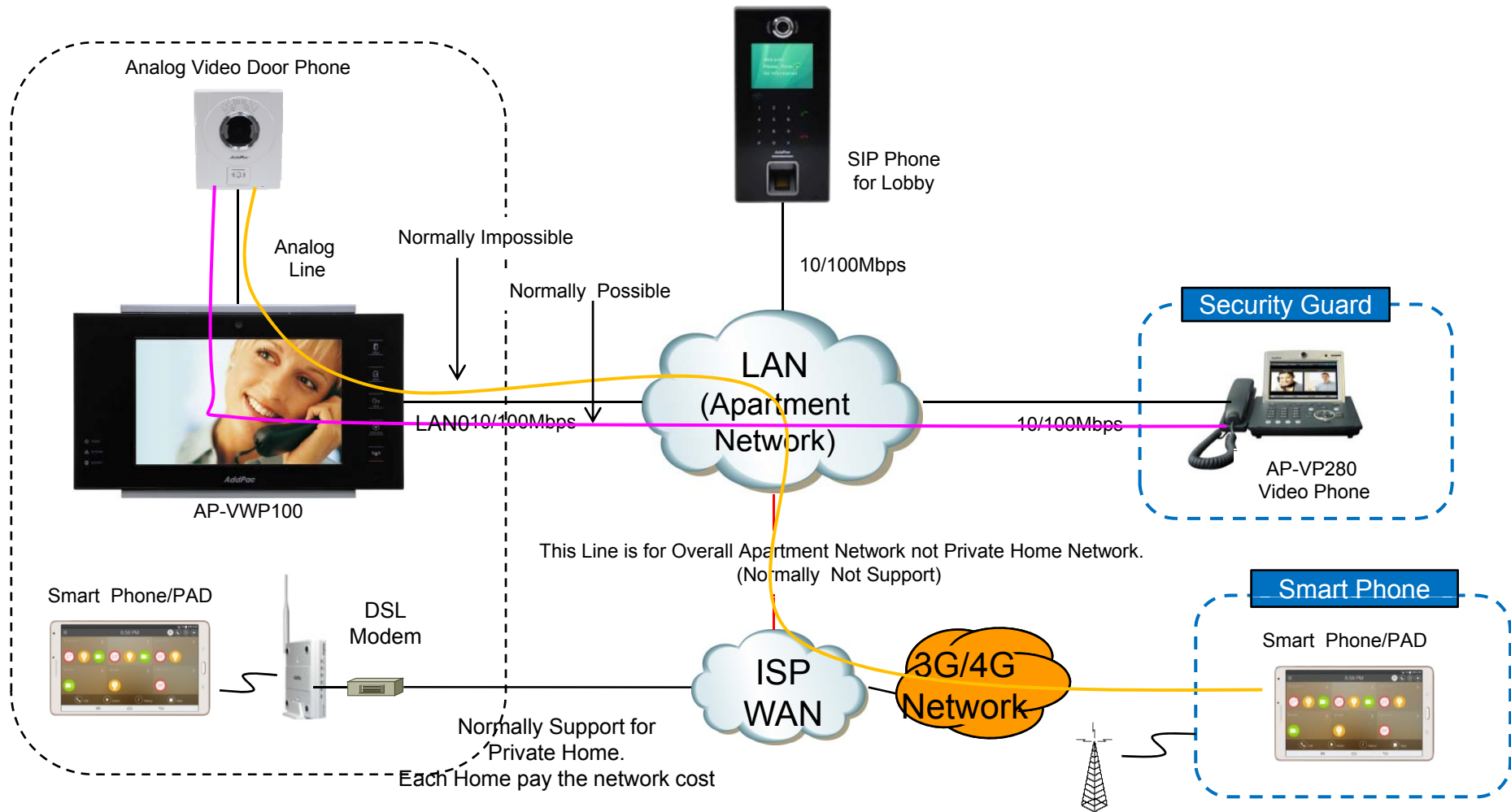
# AP-VWP150 and AP-VWP100 Comparison Table

Model	AP-VWP150 	AP-VWP100 
Service Features		
Duplex (Voice)	Full Duplex	Full Duplex
LCD	7 Inch	7 Inch
Touch Screen	Support	Support
Camera(Optional)	SD(VGA)	SD(VGA)
Video Codec	SD, H.264/MPEG4/H.263	SD, H.264/MPEG4/H.263
Voice Codec	G.722, G.711, G.726	G.722, G.711, G.726
Signaling	H.323/SIP	H.323/SIP
MIC & Speaker Phone	Support	Support
LAN Port	USB based WiFi, 10/100M Fast Ethernet (Dual LAN)	10/100M Fast Ethernet (Single LAN)
Camera(Optional)	SD(VGA)	SD(VGA)
Analog Door Phone Interface (option)	SD	SD
PSTN Line (Option)	Support	Support
PoE(Optional)	Support	Support

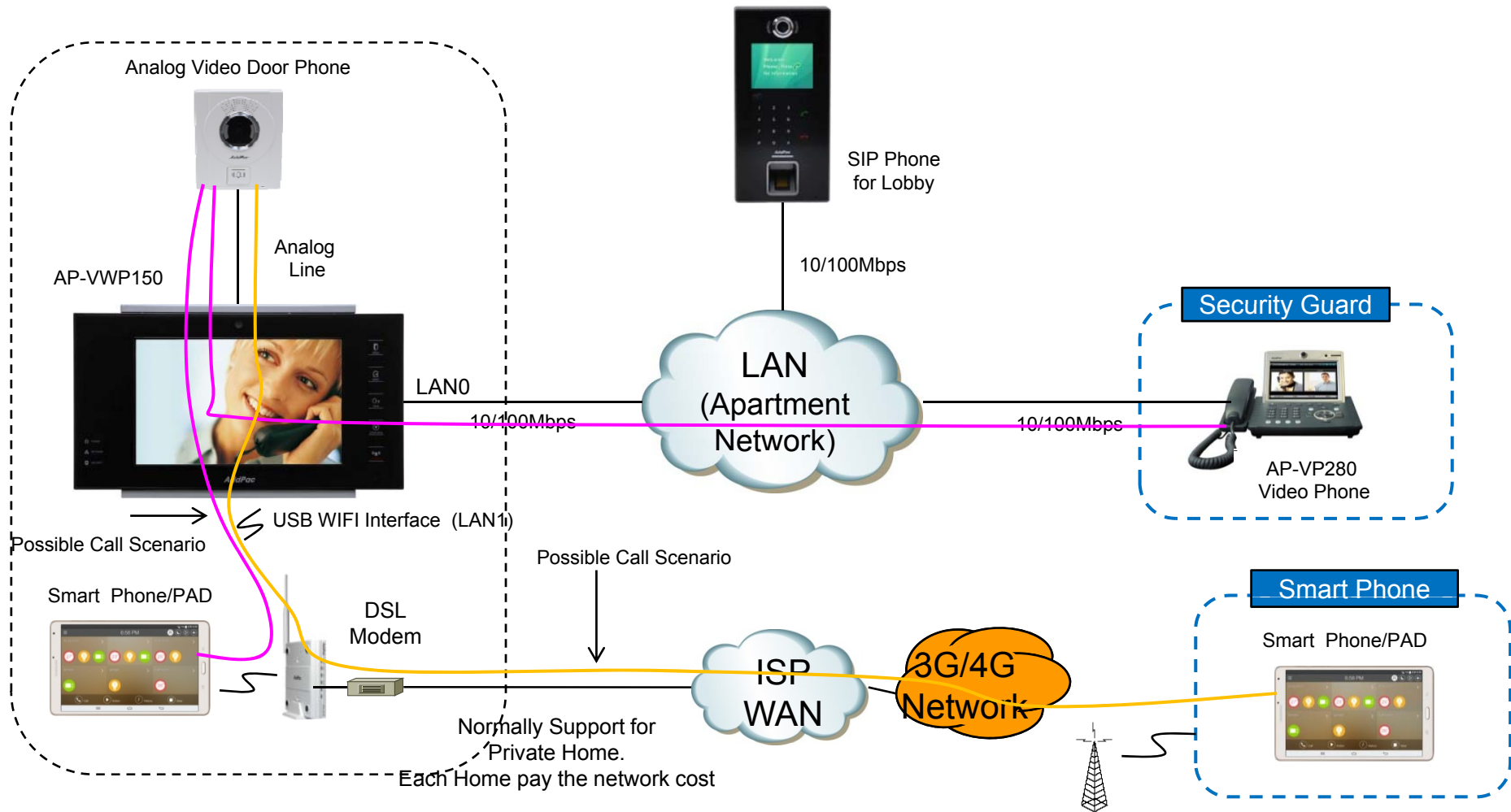
# AP-VWP100 Single LAN Support Scheme (No Smart Phone Appl. Interworking is OK)



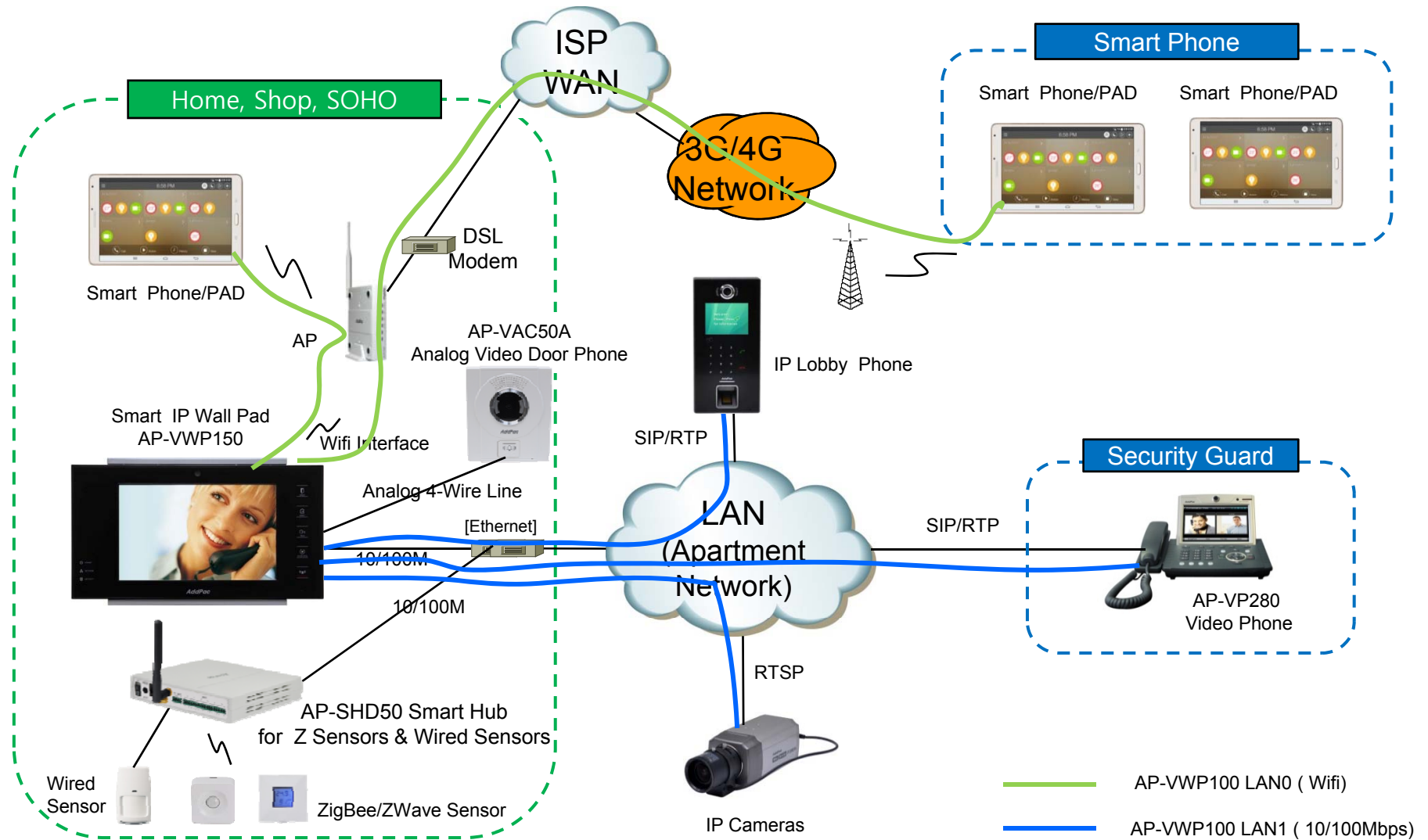
# AP-VWP100 Single LAN Support Scheme (Smart Phone Appl. Interworking is Normally Not OK)



# AP-VWP150 Dual LAN Support Scheme (Smart Phone/Tab Appl. Interworking is OK)



# AP-VWP150 Dual LAN Network Service Diagram



# Product Overview

## AP-VWP150 IP Video Wall PAD

- High Performance IP Video Wall PAD Solution
- TFT Color LCD, Touch Screen, Touch Sensor, Internal MIC & Speaker
- High Quality “7 Inch LCD, 800x480 Video Resolution
- SIP VoIP Signaling Stack Embedded (Optional H.323)
- High-performance Video/Voice Codec Support
  - H.264/MPEG4/H.263, G.711, etc
- Network Interface
  - One(1) 10/100Mbps Fast Ethernet
  - One(1) USB 2.0 Interface for External WiFi USB Module (Option)
- High Quality Speaker Phone Features
- PSTN with CID Interface Support (Option)
- Power Acoustic Echo Canceller (Option)
- PoE(Power over Ethernet) or Internal SMPS Power Support (Option)
- Video Camera Sensor (Option)
- Powerful Network Protocols (PPPoE, DHCP, Static Routing, etc)
- Firmware Upgradeable Architecture
- Advanced Voice QoS Mechanism



# Hardware Specification

## AP-VWP150 IP Video Wall PAD

RISC  
CPU

High-end  
DSP

- RISC+DSP Microprocessor Computing Power
- Audio and Voice Interface
  - Internal MIC
  - Internal Speaker
- Video Camera Interface (Option)
- TFT Color LCD Interface with Touch Screen
  - 7 Inch LCD, 800 x 480, D1 Video Resolution
- Network Interface
  - One(1) 10/100Mbps Fast Ethernet
  - One(1) USB 2.0 Interface for External WiFi USB Module (Option)
- PSTN Interface with CID (Caller ID Detection)
- Powerful Acoustic Echo Canceller (Option)
  - Half Duplex (Default)
  - Full Duplex, Powerful Acoustic Echo Canceller (Option)
- Wall Mount
- Power Supply
  - Power over Ethernet (Option)
  - Internal SMPS Power (Option)
  - External Power Adaptor (Default)

# Hardware Specification

## AP-VWP150 IP Video Wall PAD

RISC  
CPU

High-end  
DSP

- **Acoustic Echo Canceller (Option)**
  - Full-duplex operation during double-talk situations
  - One channel AEC, one channel LEC up to 256ms shared
  - Cancels echoes with up to 10dB echo return
  - Advanced noise reduction(up to 20dB)
- **Speaker**
  - Impedance : 8 +/-15%ohm at 1kHz, 1.0 Vrms
  - Sound Pressure : 90 +/- 3dB at 0.1W/10 CM  
at 800Hz, 1.0kHz, 1.2kHz, 1.5kHz
  - Resonance Level : 550Hz +/- 20%Hz at Fo Hz, 1.0Vrms
  - Frequency Range : Fo Hz ~20kHz
  - Input Power : Normal : 1.0 W, Max : 2.0W
- **Audio Amplifier**
  - 1-W BTL Output(5V, 0.11 % THD+N)
  - Uncompensated Gains of 2 to 20 (BTL Mode)
  - Thermal and Shot-circuit Protection
  - High Supply Ripple Rejection Ratio
- **PoE(Power over Ethernet), Option**
  - IEEE802.3af compliant
  - Input voltage range 36V to 57V
  - Short-circuit Protection

# Hardware Specification

AP-VWP150 IP Video Wall PAD

RISC  
CPU

High-end  
DSP

- **LCD Controller**
  - One-Chip Solution for amorphous TFT-LCD
  - Support resolution up to 480xRGBx640
  - Built-in 172800 bytes internal RAM
  - 6,8,16, and 18-bit RGB Interface
  - Resize Function ( x ½, x ¼)
  - On-Chip Power Management System
- **Video Camera (Option)**
  - High Sensitivity for low-light operation
  - Output support for Raw RGB, RGB, and YCrCb format
  - Image Size : VGA, QVGA, and any size scaling down from CIF to 40x30
  - Support AEC, AGC,AWB, ABF, ABLC
  - Saturation Level, Edge Enhancement Level, De-noise level Auto adjust

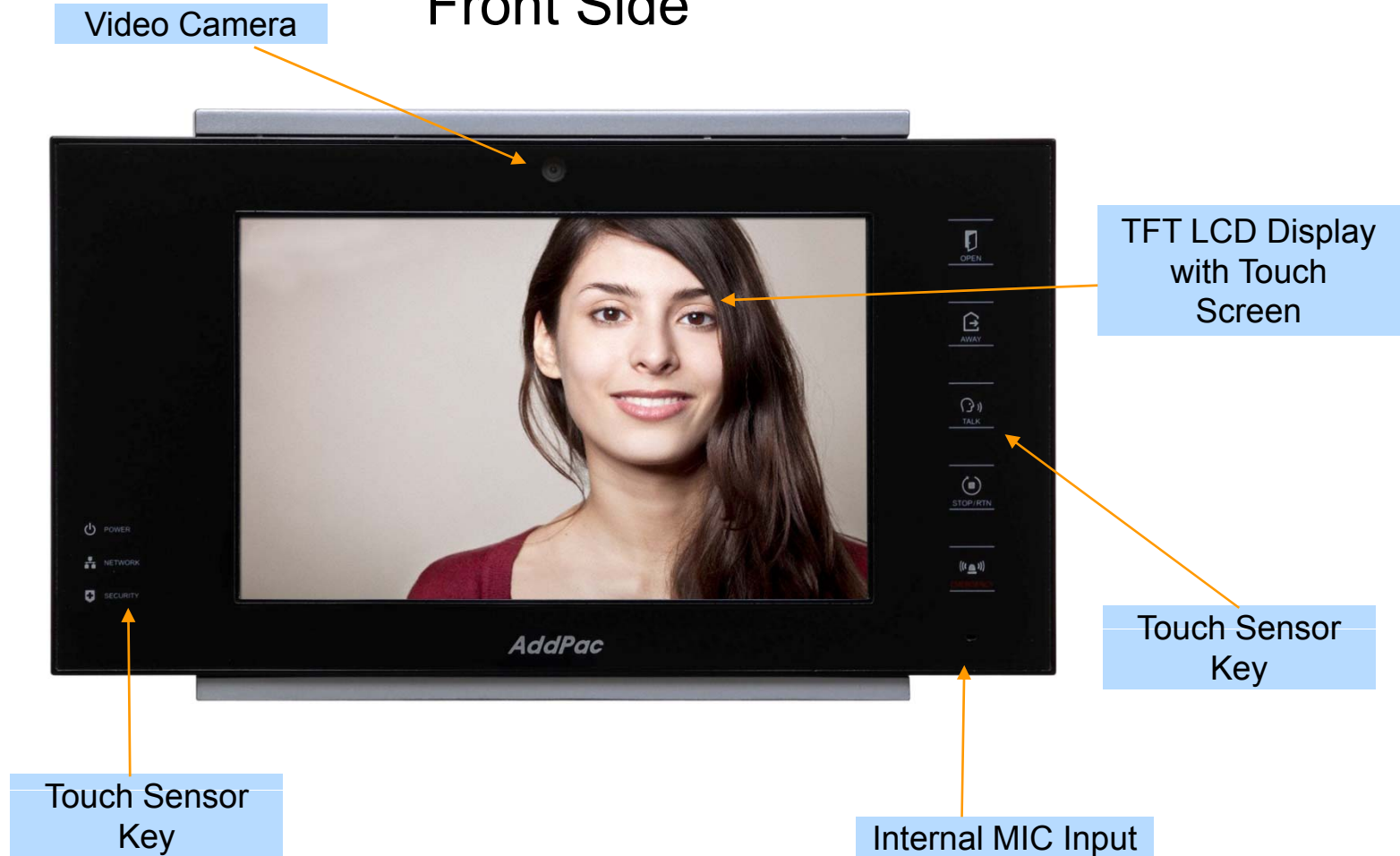
# Hardware Specification

AP-VWP150 IP Video Wall PAD

RISC  
CPU

High-end  
DSP

## Front Side



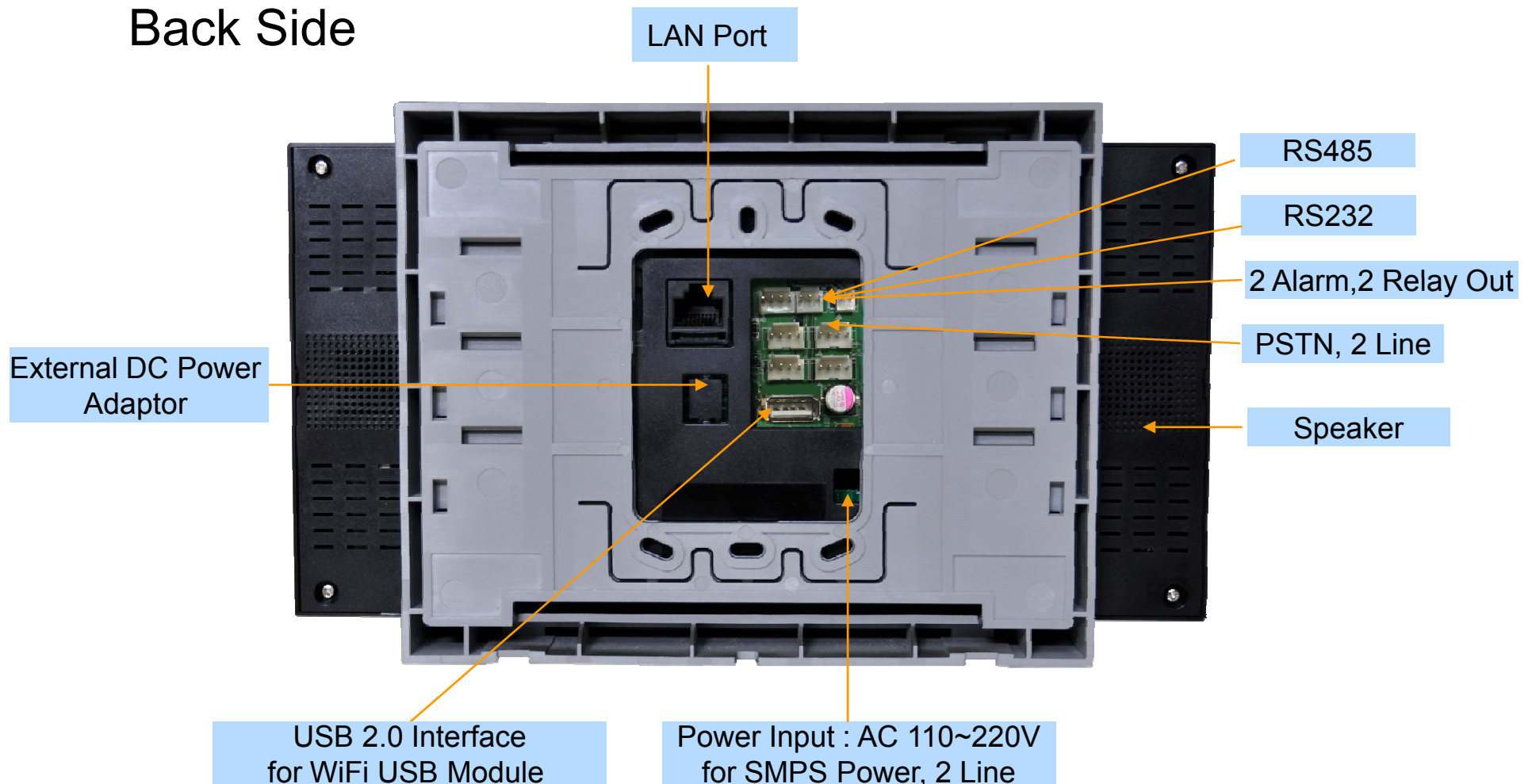
# Hardware Specification

AP-VWP150 IP Video Wall PAD

RISC  
CPU

High-end  
DSP

## Back Side



# Ordering Information

- **AP-VWP150 IP Video Wall PAD Hardware**
  - AP-VWP150 IP Video Wall PAD Main Body
  - RISC Microprocessor with High-end Programmable DSP Architecture
  - 7 Inch LCD with Touch Screen Features
  - Internal MIC, Internal Speaker
  - 1-Port 10/100Mbps Fast Ethernet
  - 1-Port USB 2.0 Interface for Wifi USB Module
  - PoE Interface (Option)
  - Including Network Cable Set & External Power Supply, etc.
- **Built-in APOS Internetworking Software for AP-VWP150**
- **Including 1 Year Hardware Warranty**
- **Product Documents**
  - Install and Operation Guide (PDF)
- **Pricing**
  - AddPac Technology Regional Sales Manager
  - Authorized Sales and Marketing Representatives
  - Please Contact [www.addpac.com](http://www.addpac.com)



# Thank you!

**AddPac Technology Co., Ltd.**  
Sales and Marketing

Phone +82.2.568.3848 (KOREA)

FAX +82.2.568.3847 (KOREA)

E-mail [sales@addpac.com](mailto:sales@addpac.com)