

AP-VWP150 and AP-VWP100 Comparison (Difference Between Dual LAN and Single LAN Device)



AddPac

AddPac Technology



2015, Sales and Marketing

Contents

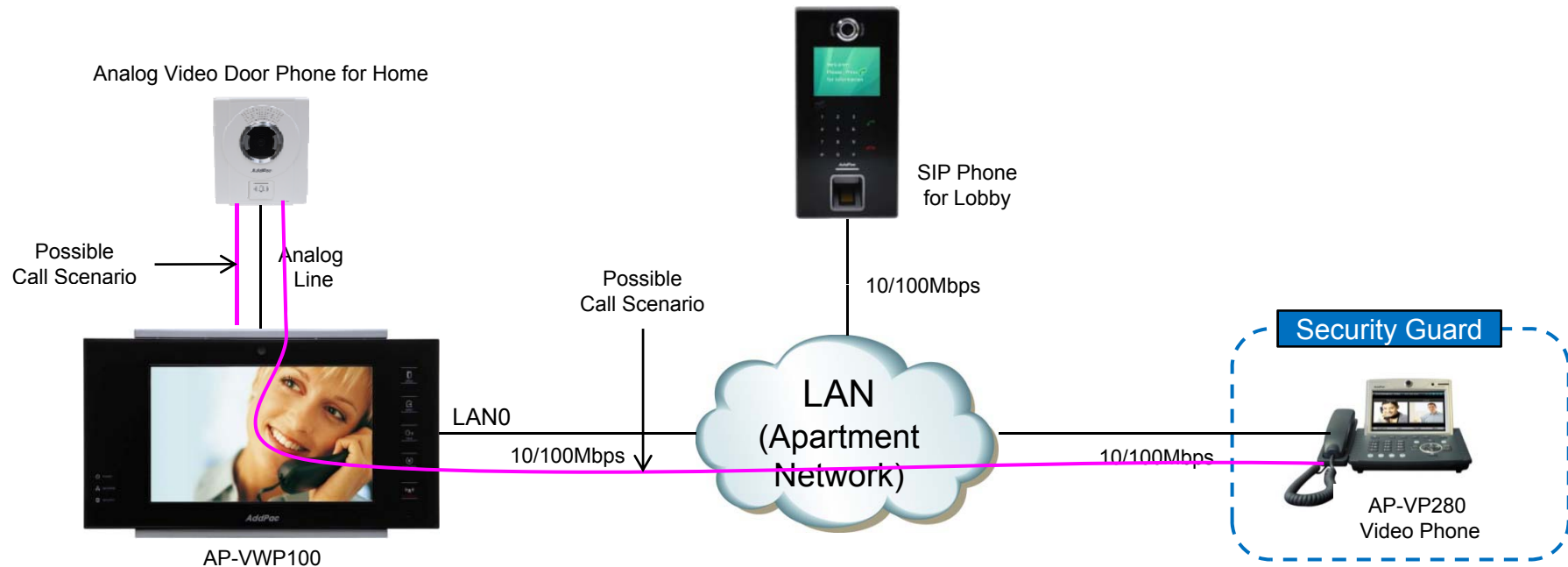
- AP-VWP150 and AP-VWP100 Comparison Table
- AP-VWP100 Single LAN Device Scheme
- AP-VWP100 Dual LAN Device Scheme
- AP-VWP150 Network Service Diagram
- Hardware Specification
- Ordering Information



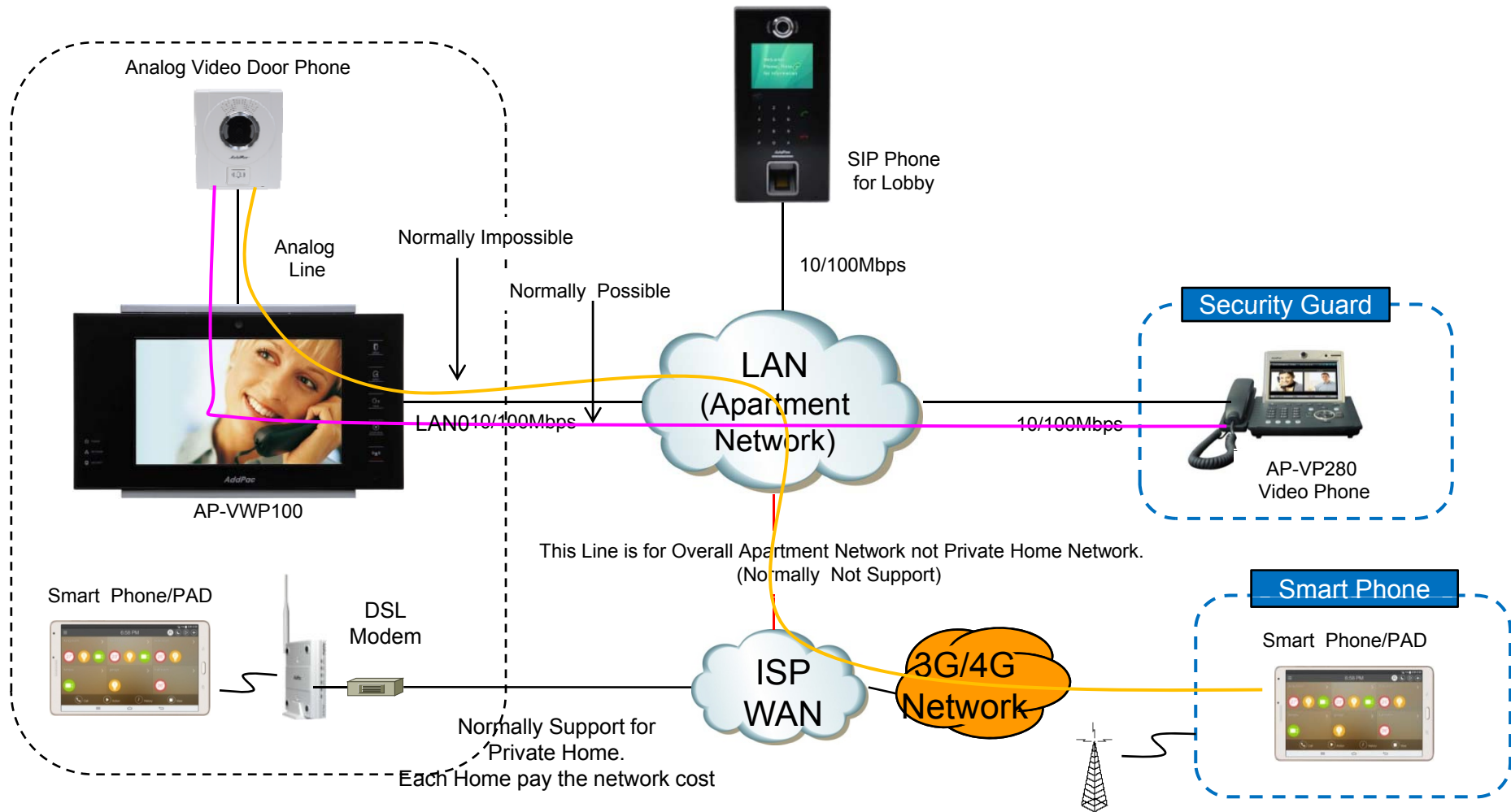
AP-VWP150 and AP-VWP100 Comparison Table

Model	AP-VWP150 	AP-VWP100 
Service Features		
Duplex (Voice)	Full Duplex	Full Duplex
LCD	7 Inch	7 Inch
Touch Screen	Support	Support
Camera(Optional)	SD(VGA)	SD(VGA)
Video Codec	SD, H.264/MPEG4/H.263	SD, H.264/MPEG4/H.263
Voice Codec	G.722, G.711, G.726	G.722, G.711, G.726
Signaling	H.323/SIP	H.323/SIP
MIC & Speaker Phone	Support	Support
LAN Port	USB based WiFi, 10/100M Fast Ethernet (Dual LAN)	10/100M Fast Ethernet (Single LAN)
Camera(Optional)	SD(VGA)	SD(VGA)
Analog Door Phone Interface (option)	SD	SD
PSTN Line (Option)	Support	Support
PoE(Optional)	Support	Support

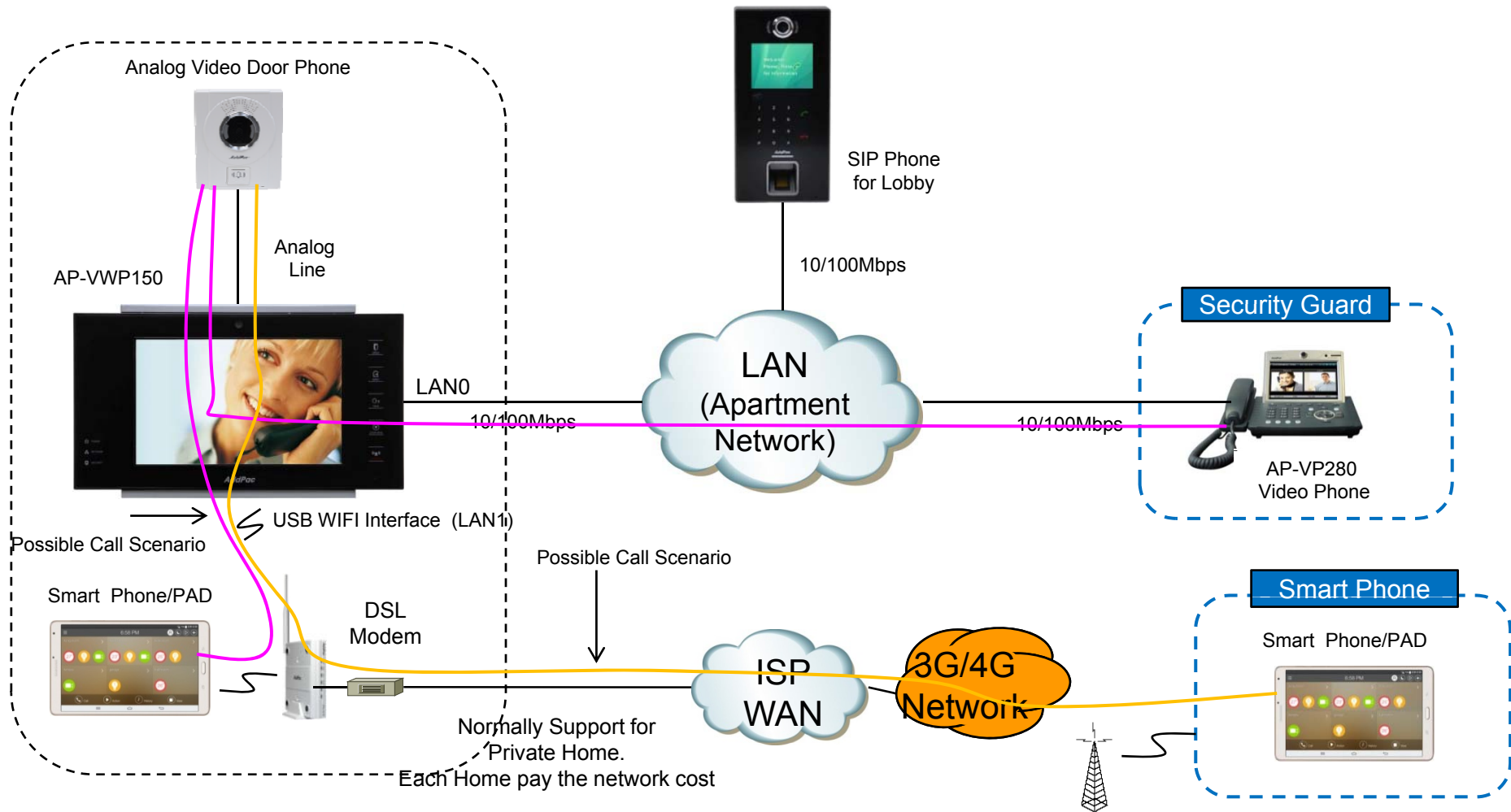
AP-VWP100 Single LAN Support Scheme (No Smart Phone Appl. Interworking is OK)



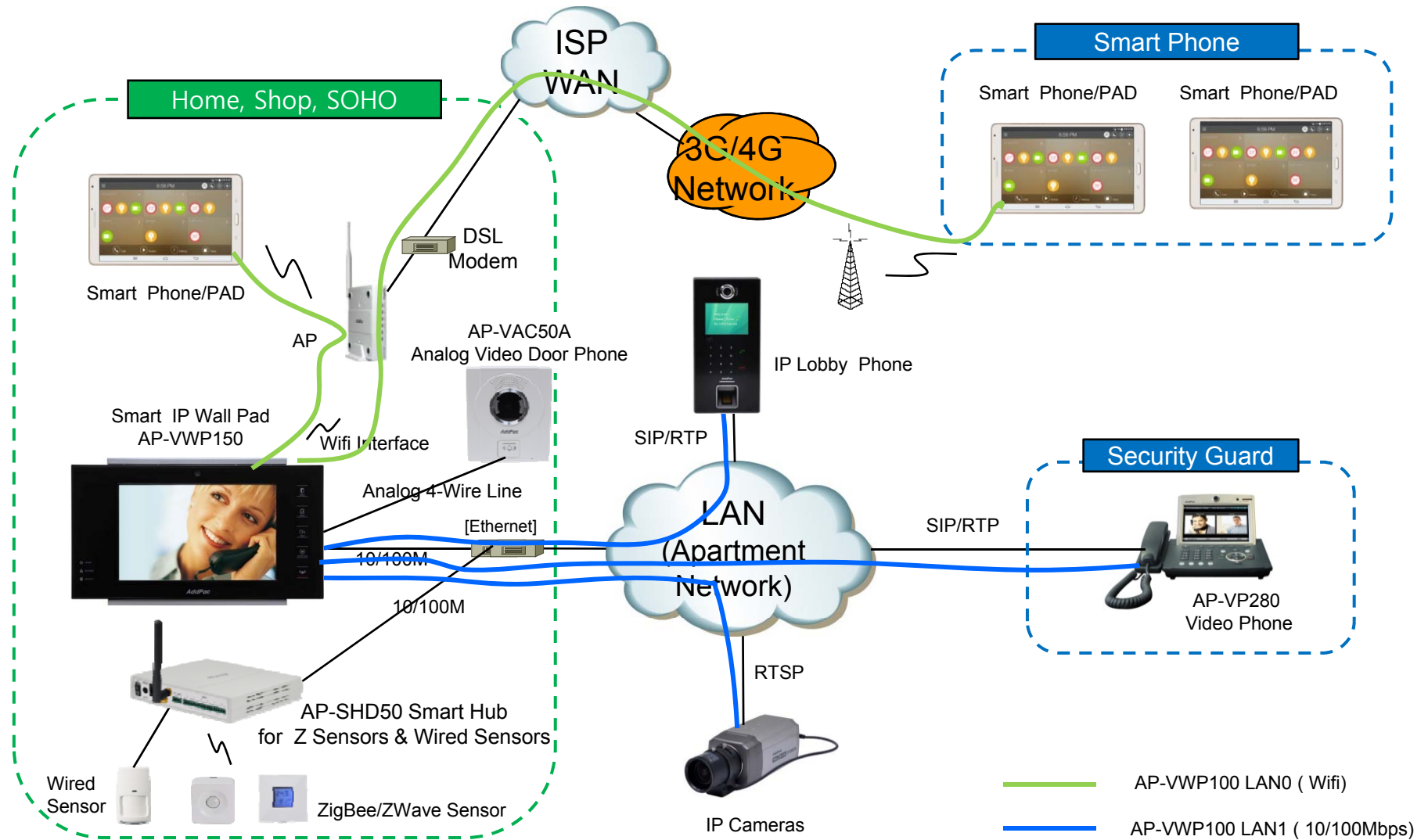
AP-VWP100 Single LAN Support Scheme (Smart Phone Appl. Interworking is Normally Not OK)



AP-VWP150 Dual LAN Support Scheme (Smart Phone/Tab Appl. Interworking is OK)



AP-VWP150 Dual LAN Network Service Diagram



Product Overview

AP-VWP150 IP Video Wall PAD

- High Performance IP Video Wall PAD Solution
- TFT Color LCD, Touch Screen, Touch Sensor, Internal MIC & Speaker
- High Quality “7 Inch LCD, 800x480 Video Resolution
- SIP VoIP Signaling Stack Embedded (Optional H.323)
- High-performance Video/Voice Codec Support
 - H.264/MPEG4/H.263, G.711, etc
- Network Interface
 - One(1) 10/100Mbps Fast Ethernet
 - One(1) USB 2.0 Interface for External WiFi USB Module (Option)
- High Quality Speaker Phone Features
- PSTN with CID Interface Support (Option)
- Power Acoustic Echo Canceller (Option)
- PoE(Power over Ethernet) or Internal SMPS Power Support (Option)
- Video Camera Sensor (Option)
- Powerful Network Protocols (PPPoE, DHCP, Static Routing, etc)
- Firmware Upgradeable Architecture
- Advanced Voice QoS Mechanism

Hardware Specification

AP-VWP150 IP Video Wall PAD

RISC
CPU

High-end
DSP

- RISC+DSP Microprocessor Computing Power
- Audio and Voice Interface
 - Internal MIC
 - Internal Speaker
- Video Camera Interface (Option)
- TFT Color LCD Interface with Touch Screen
 - 7 Inch LCD, 800 x 480, D1 Video Resolution
- Network Interface
 - One(1) 10/100Mbps Fast Ethernet
 - One(1) USB 2.0 Interface for External WiFi USB Module (Option)
- PSTN Interface with CID (Caller ID Detection)
- Powerful Acoustic Echo Canceller (Option)
 - Half Duplex (Default)
 - Full Duplex, Powerful Acoustic Echo Canceller (Option)
- Wall Mount
- Power Supply
 - Power over Ethernet (Option)
 - Internal SMPS Power (Option)
 - External Power Adaptor (Default)

Hardware Specification

AP-VWP150 IP Video Wall PAD

RISC
CPU

High-end
DSP

- **Acoustic Echo Canceller (Option)**
 - Full-duplex operation during double-talk situations
 - One channel AEC, one channel LEC up to 256ms shared
 - Cancels echoes with up to 10dB echo return
 - Advanced noise reduction(up to 20dB)
- **Speaker**
 - Impedance : 8 +/-15%ohm at 1kHz, 1.0 Vrms
 - Sound Pressure : 90 +/- 3dB at 0.1W/10 CM
at 800Hz, 1.0kHz, 1.2kHz, 1.5kHz
 - Resonance Level : 550Hz +/- 20%Hz at Fo Hz, 1.0Vrms
 - Frequency Range : Fo Hz ~20kHz
 - Input Power : Normal : 1.0 W, Max : 2.0W
- **Audio Amplifier**
 - 1-W BTL Output(5V, 0.11 % THD+N)
 - Uncompensated Gains of 2 to 20 (BTL Mode)
 - Thermal and Shot-circuit Protection
 - High Supply Ripple Rejection Ratio
- **PoE(Power over Ethernet), Option**
 - IEEE802.3af compliant
 - Input voltage range 36V to 57V
 - Short-circuit Protection

Hardware Specification

AP-VWP150 IP Video Wall PAD

RISC
CPU

High-end
DSP

- **LCD Controller**
 - One-Chip Solution for amorphous TFT-LCD
 - Support resolution up to 480xRGBx640
 - Built-in 172800 bytes internal RAM
 - 6,8,16, and 18-bit RGB Interface
 - Resize Function (x ½, x ¼)
 - On-Chip Power Management System
- **Video Camera (Option)**
 - High Sensitivity for low-light operation
 - Output support for Raw RGB, RGB, and YCrCb format
 - Image Size : VGA, QVGA, and any size scaling down from CIF to 40x30
 - Support AEC, AGC,AWB, ABF, ABLC
 - Saturation Level, Edge Enhancement Level, De-noise level Auto adjust

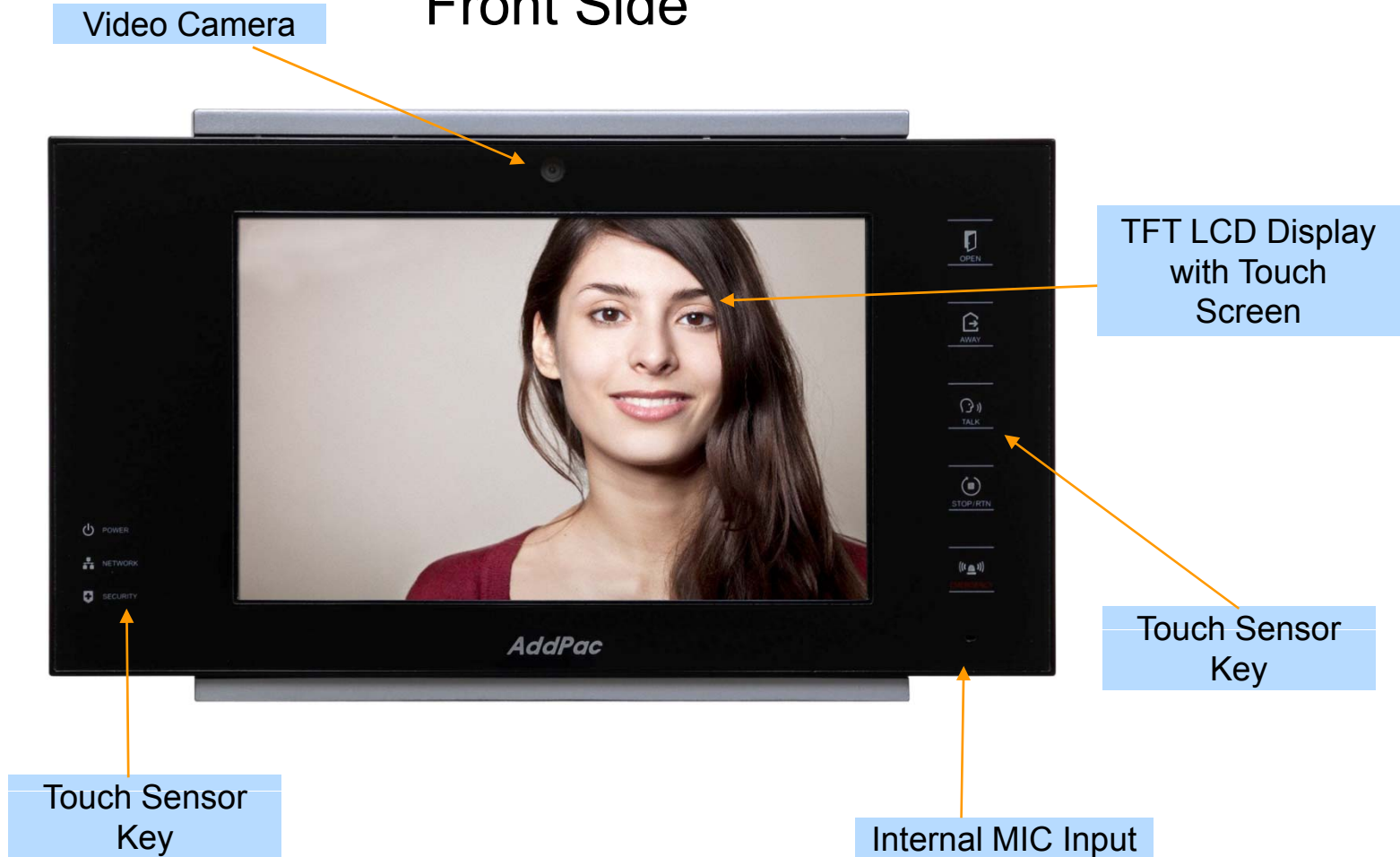
Hardware Specification

AP-VWP150 IP Video Wall PAD

RISC
CPU

High-end
DSP

Front Side



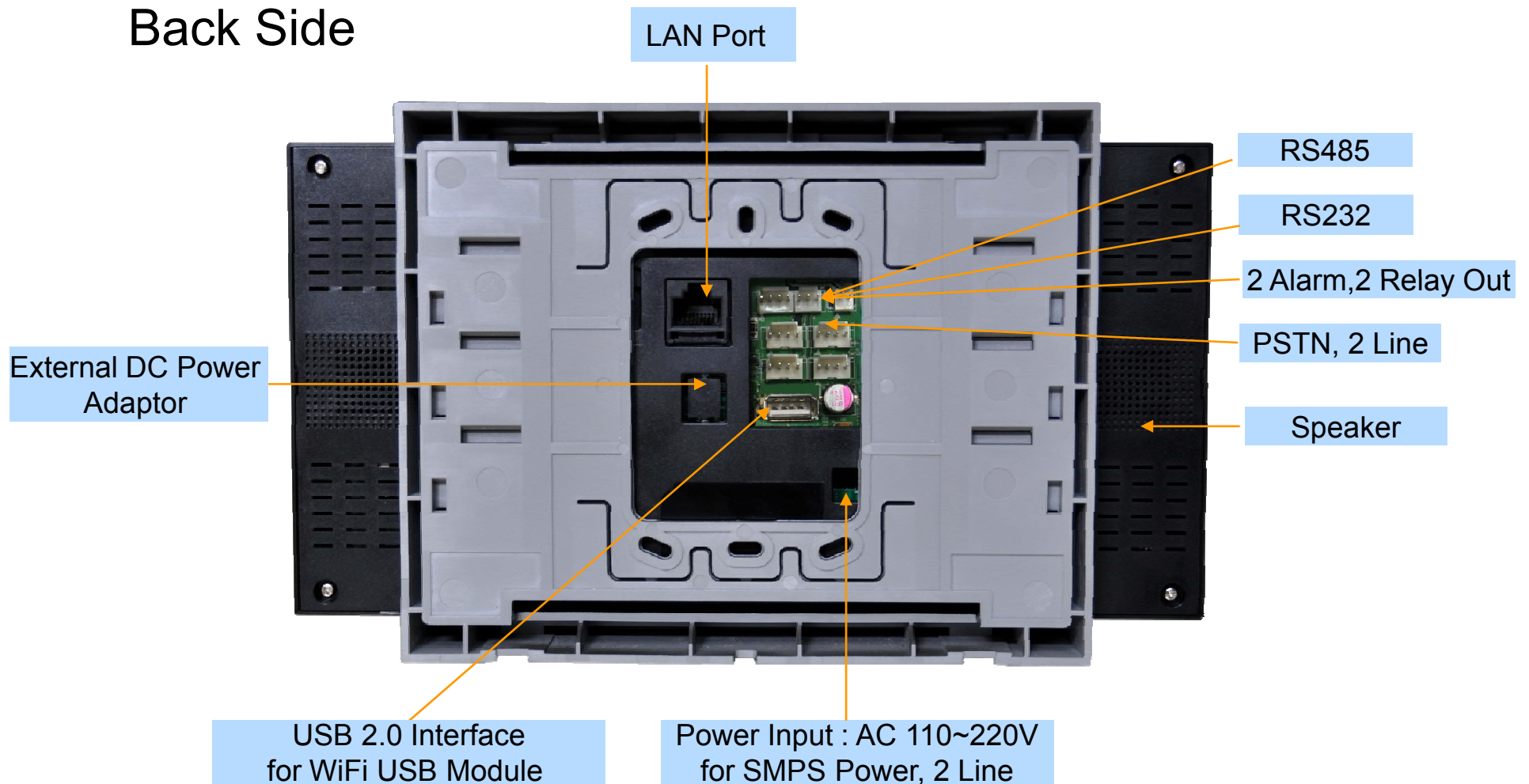
Hardware Specification

AP-VWP150 IP Video Wall PAD

RISC
CPU

High-end
DSP

Back Side



Ordering Information

- **AP-VWP150 IP Video Wall PAD Hardware**
 - AP-VWP150 IP Video Wall PAD Main Body
 - RISC Microprocessor with High-end Programmable DSP Architecture
 - 7 Inch LCD with Touch Screen Features
 - Internal MIC, Internal Speaker
 - 1-Port 10/100Mbps Fast Ethernet
 - 1-Port USB 2.0 Interface for Wifi USB Module
 - PoE Interface (Option)
 - Including Network Cable Set & External Power Supply, etc.
- **Built-in APOS Internetworking Software for AP-VWP150**
- **Including 1 Year Hardware Warranty**
- **Product Documents**
 - Install and Operation Guide (PDF)
- **Pricing**
 - AddPac Technology Regional Sales Manager
 - Authorized Sales and Marketing Representatives
 - Please Contact www.addpac.com



Thank you!

AddPac Technology Co., Ltd.
Sales and Marketing

Phone +82.2.568.3848 (KOREA)

FAX +82.2.568.3847 (KOREA)

E-mail sales@addpac.com