

# AP-SWP100

## Sensor Control Wall PAD

High Performance IoT Wall PAD Solution for ZigBee/Zwave Sensor Control

### Preliminary Product Overview

(Without notice, following described technical spec. can be changed)



# **AddPac**

## **AddPac Technology**

Sales and Marketing

[www.addpac.com](http://www.addpac.com)

# Contents

- Product Overview
- Product Highlights
- Hardware Specification
- Software Service
- Network Protocols
- Network Management
- Security Management
- Application Area
- Ordering Information

# Product Overview

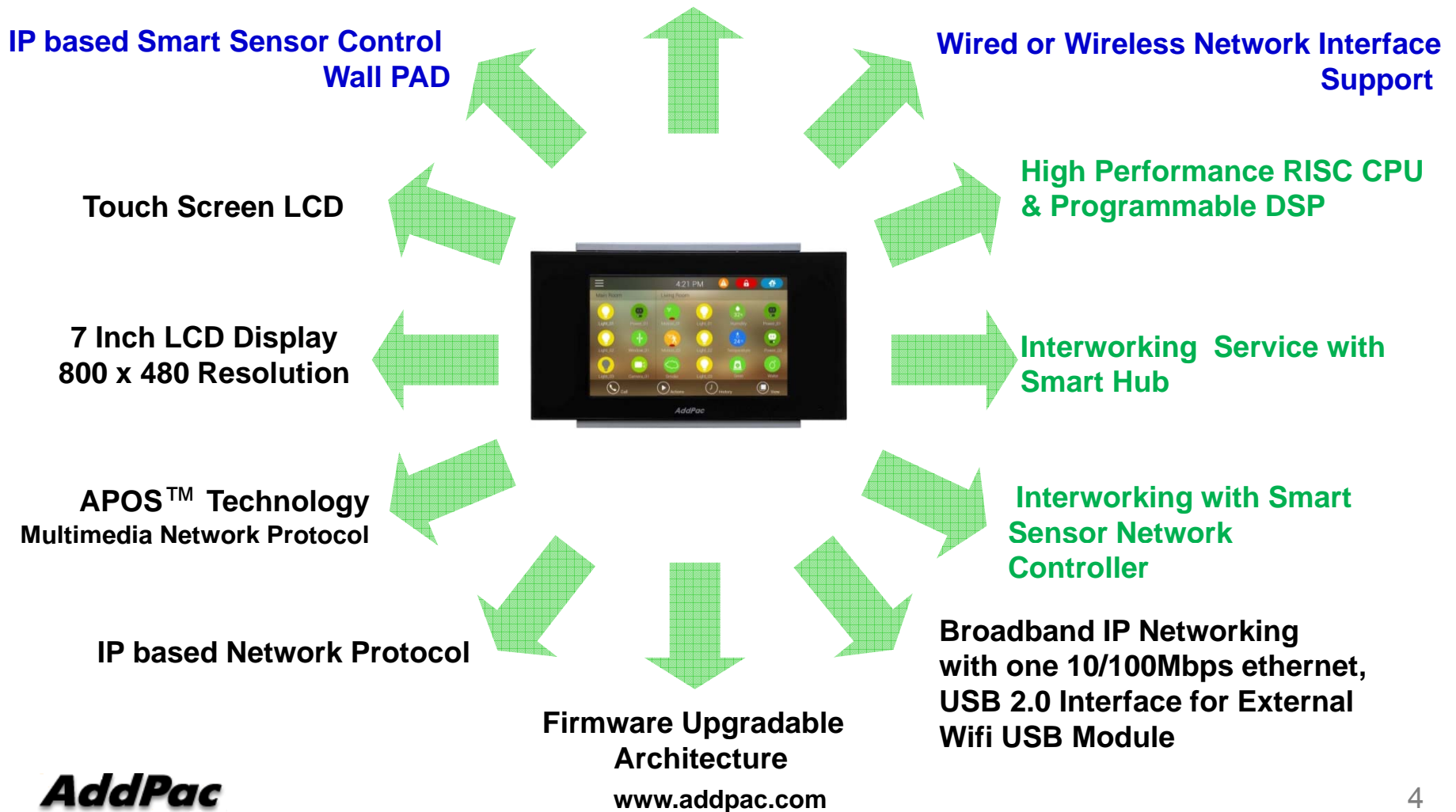
## AP-SWP100 Sensor Control Wall PAD

- High Performance Sensor Control Wall PAD Solution for ZigBee/Zwave Sensor Devices
- Advanced Enterprise Sensor Device Control Solution
- Interworking with AddPac Smart Sensor Network Controller
- TFT Color LCD, Touch Screen, Internal MIC & Speaker
- High Quality “7 Inch LCD, 800x480 Video Resolution
- Network Interface
  - One(1) 10/100Mbps Fast Ethernet
  - One(1) USB 2.0 Interface for External WiFi USB Module (Option)
- PoE(Power over Ethernet) or Internal SMPS Power Support (Option)
- Powerful Network Protocols (PPPoE, DHCP, Static Routing, etc)
- Firmware Upgradeable Architecture

# Product Highlights

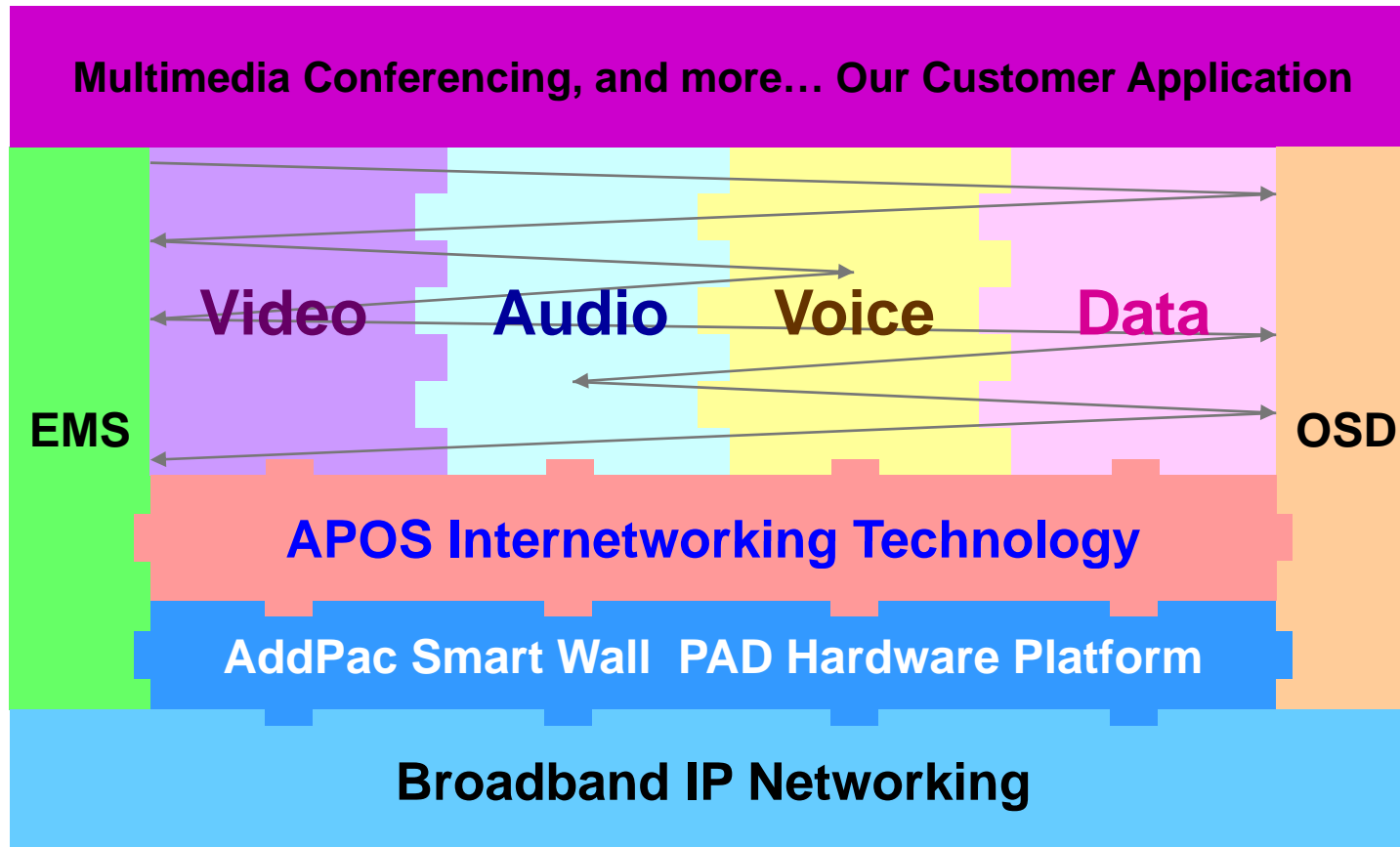
AP-SWP100 Sensor Control Wall PAD

## Powerful Wall PAD Solution for Sensor Device Control



# Multimedia Service

AP-SWP100 Sensor Control Wall PAD



- APOS : AddPac Internetworking Operating System
- OSD : On- Screen Display
- EMS : Element Management System

# Hardware Specification

## AP-SWP100 Sensor Control Wall PAD

- RISC+DSP Microprocessor Computing Power
- Audio and Voice Interface
  - Internal MIC
  - Internal Speaker
- TFT Color LCD Interface with Touch Screen
  - 7 Inch LCD, 800 x 480, D1 Video Resolution
- Network Interface
  - One(1) 10/100Mbps Fast Ethernet
  - One(1) USB 2.0 Interface for External WiFi USB Module (Option)
- Wall Mount
- Power Supply
  - Power over Ethernet (Option)
  - Internal SMPS Power (Option)
  - External Power Adaptor (Default)

# Hardware Specification

## AP-SWP100 Sensor Control Wall PAD

- **LCD Controller**
  - One-Chip Solution for amorphous TFT-LCD
  - Support resolution up to 480xRGBx800
  - Built-in 172800 bytes internal RAM
  - 6,8,16, and 18-bit RGB Interface
  - Resize Function ( x ½, x ¼)
  - On-Chip Power Management System
- **Speaker**
  - Impedance : 8 +/-15%ohm at 1kHz, 1.0 Vrms
  - Sound Pressure : 90 +/- 3dB at 0.1W/10 CM at 800Hz, 1.0kHz, 1.2kHz, 1.5kHz
  - Resonance Level : 550Hz +/- 20%Hz at Fo Hz, 1.0Vrms
  - Frequency Range : Fo Hz ~20kHz
  - Input Power : Normal : 1.0 W, Max : 2.0W
- **Audio Amplifier**
  - 1-W BTL Output(5V, 0.11 % THD+N)
  - Uncompensated Gains of 2 to 20 (BTL Mode)
  - Thermal and Shot-circuit Protection
  - High Supply Ripple Rejection Ratio
- **PoE(Power over Ethernet), Option**
  - IEEE802.3af compliant
  - Input voltage range 36V to 57V
  - Short-circuit Protection

# Hardware Specification

AP-SWP100 Sensor Control Wall PAD

## Front Side



7inch  
TFT LCD Display  
with Touch  
Screen

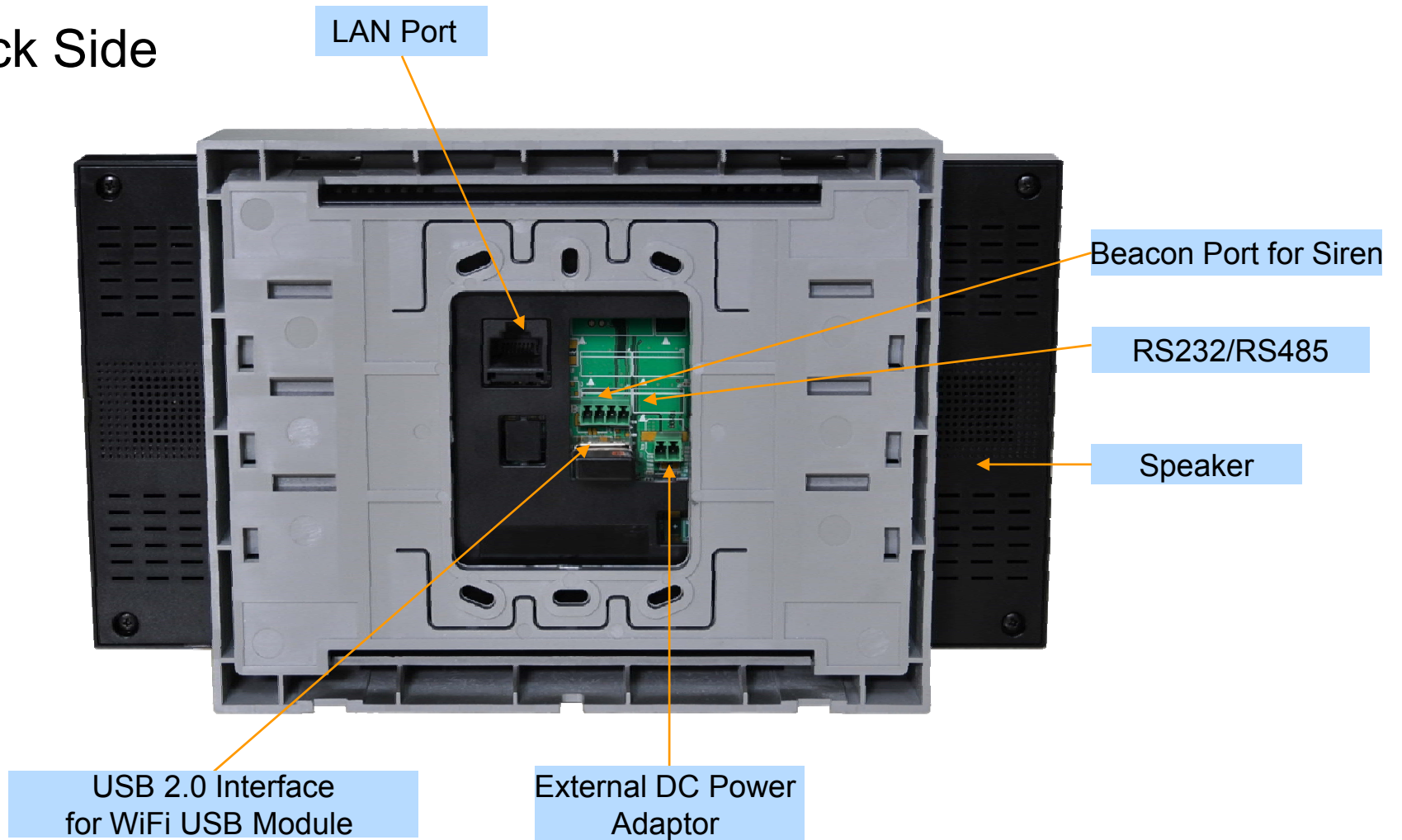
Internal MIC Input



# Hardware Specification

AP-SWP100 Sensor Control Wall PAD

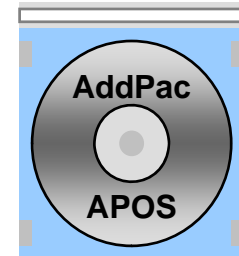
Back Side



# Software Service

## AP-SWP100 Sensor Control Wall PAD

- Built-in AddPac APOS Internetworking Software
  - Scalability, Functionality, and Stability Features
  - IP Sensor Control Wall PAD Function for Z-Sensor Devices
- Firmware Upgradeable DSP Architecture
- OSD (On-screen Display) Function Support
- Industry Standard IP based Network Protocol Features



# Network Protocols

AP-SWP100 Sensor Control Wall PAD

## Basic Network Protocols

- ARP, IPv4, TCP, UDP, ICMP, SCTP, IGMP, MLD

## Routing Protocol

- IPv4 : Static

## Service Protocol

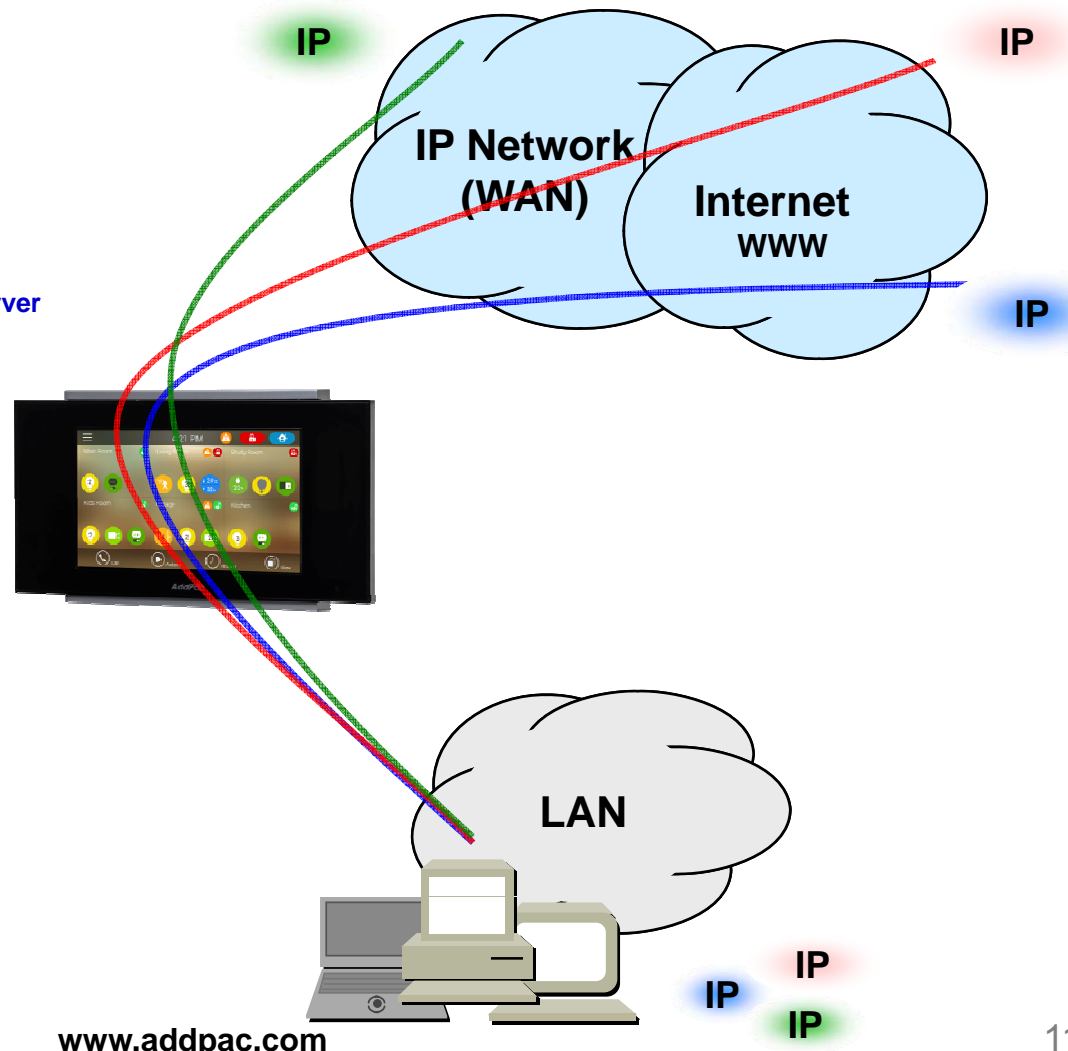
- FTP, Telnet, TFTP, DHCP Server/Relay, SNMP Server
- CDP (Cisco Discovery Protocol)
- DNS Resolver , DDNS(nsupdate)
- Bridge
- Syslog

## IPv4 Address Configuration

- Fixed (Static)
- DHCP
- PPPoE

## Miscellaneous

- Standard & Extended IPv4 Access List
- Multi-level User Account Management
- IP accounting
- STUN Client



# Network Management

## AP-SWP100 Sensor Control Wall PAD

- **SNMP**

- Standard Simple Network Management Protocol( SNMP) Agent support
- MIB v1 and v2 Support

- **Web-based Management**

- Smart Easy Setup
- Standard Voice Interface
- Standard PSTN Back-up Interface

- **Watch-dog Function**

- Hardware, Software watch-dog services

- **Remote Management**

- Telnet
- Rlogin

- **Auto Upgrade Service**

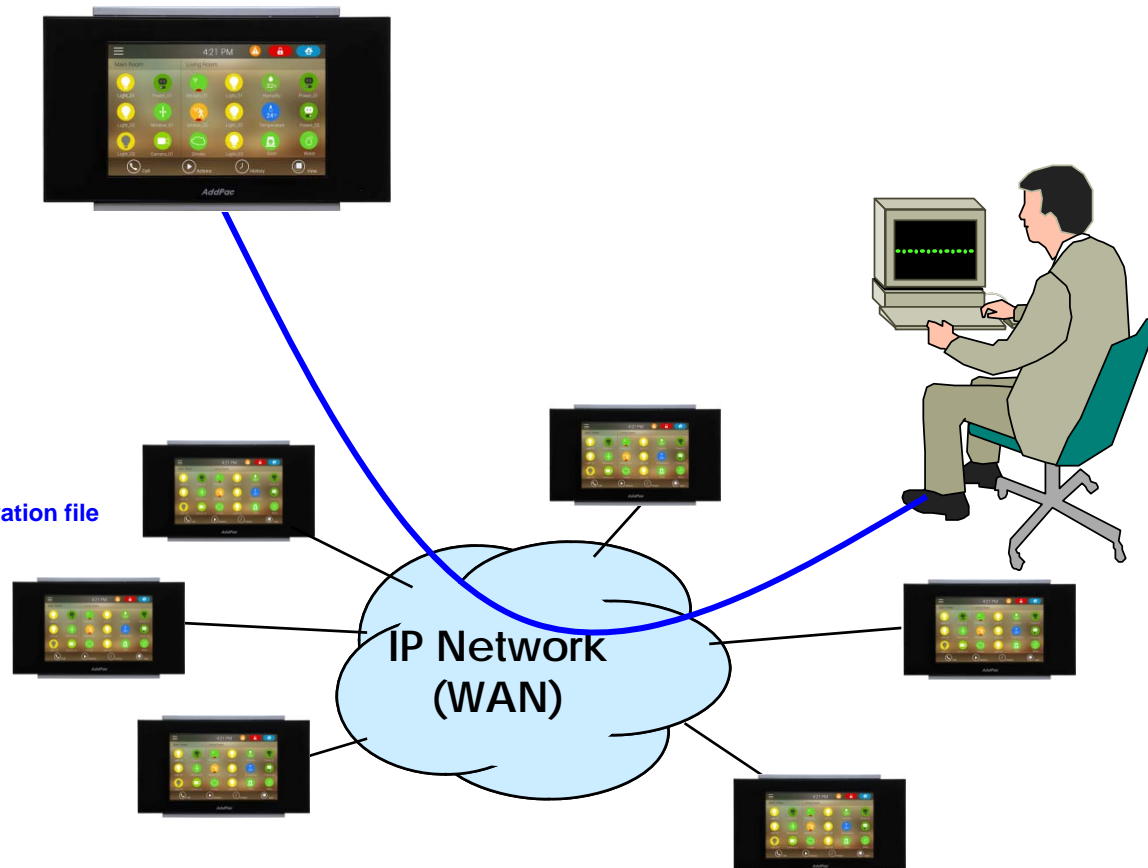
- HTTP server based APOS image and configuration file auto-upgrade support

- **Batch Job Function**

- Text based script downloading

- **Interoperable with AP-VPMS Service**

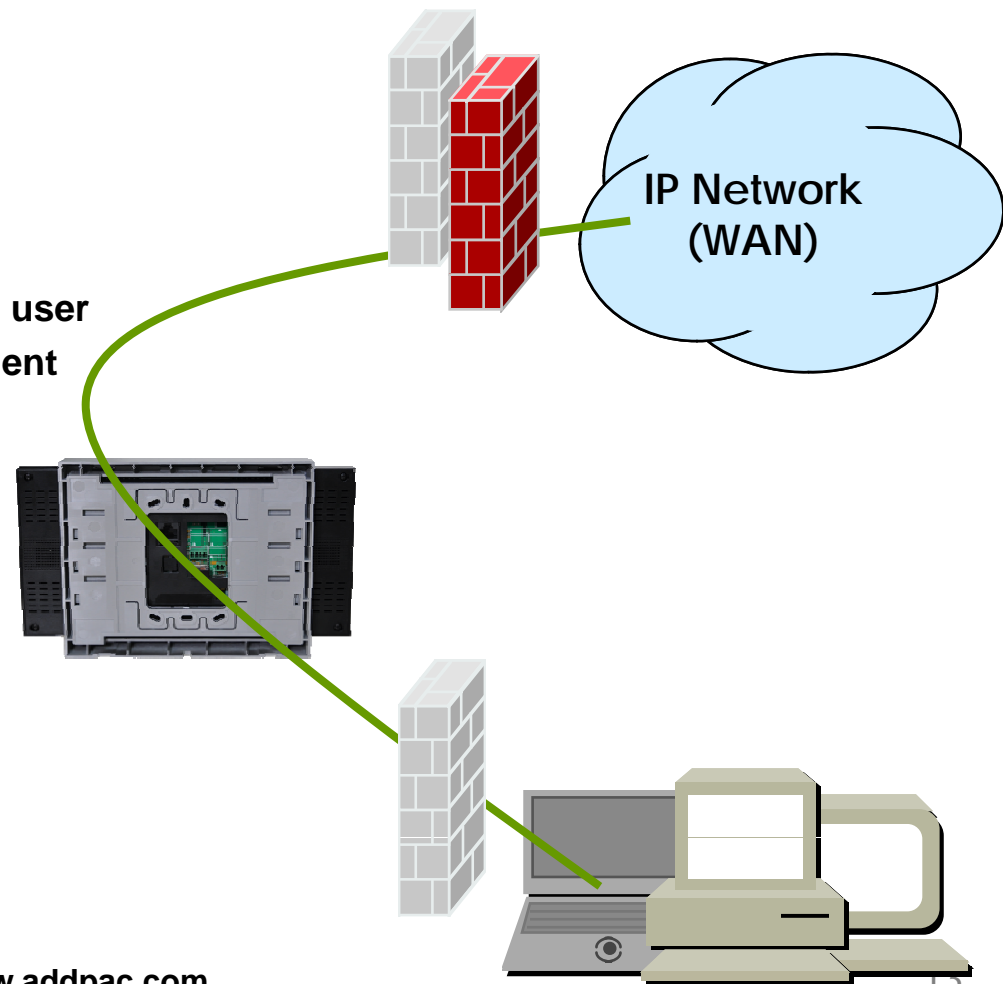
- AddPac VoIP Plug & Play Management System (AP-VPMS)



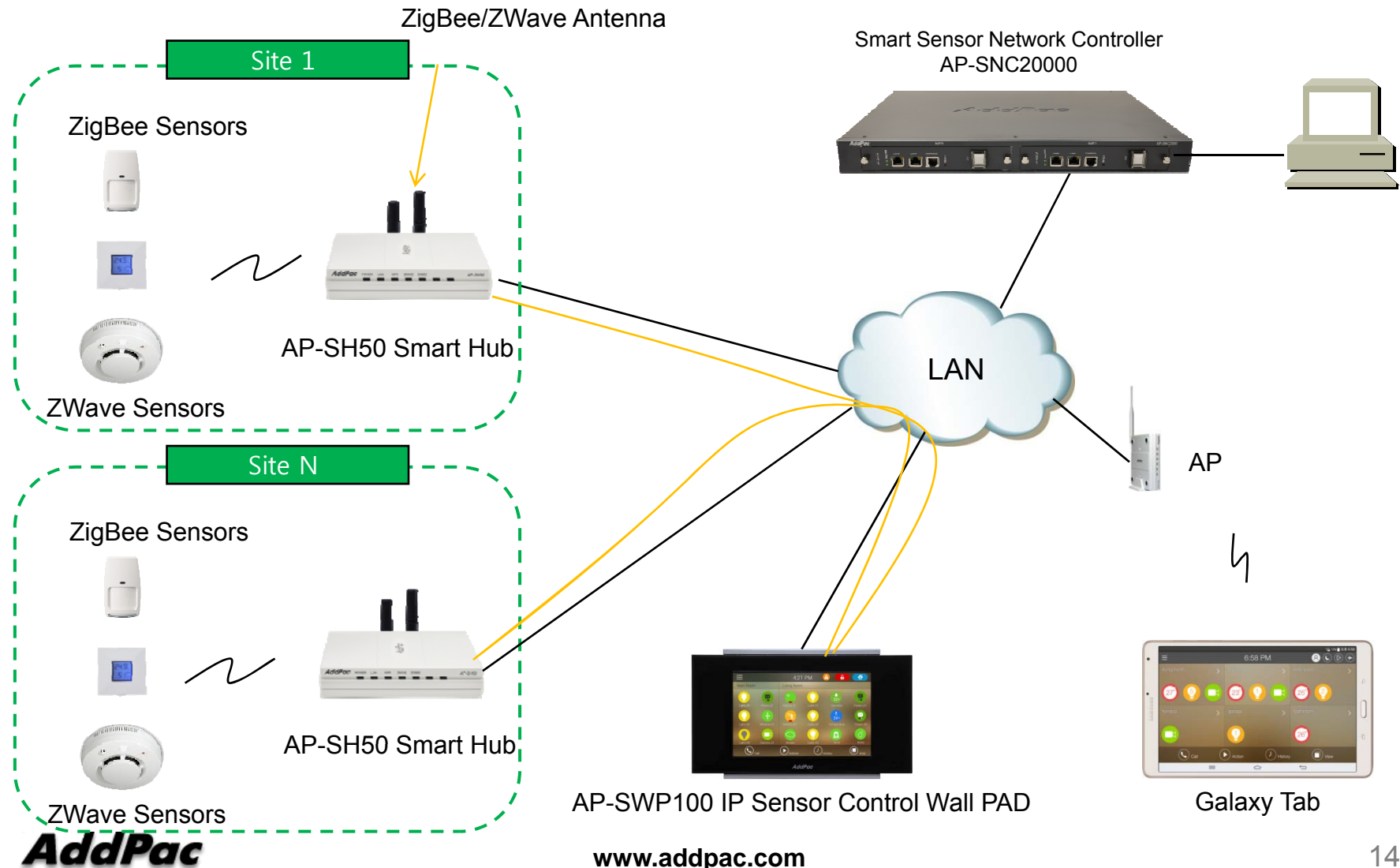
# Security Management

## AP-SWP100 Sensor Control Wall PAD

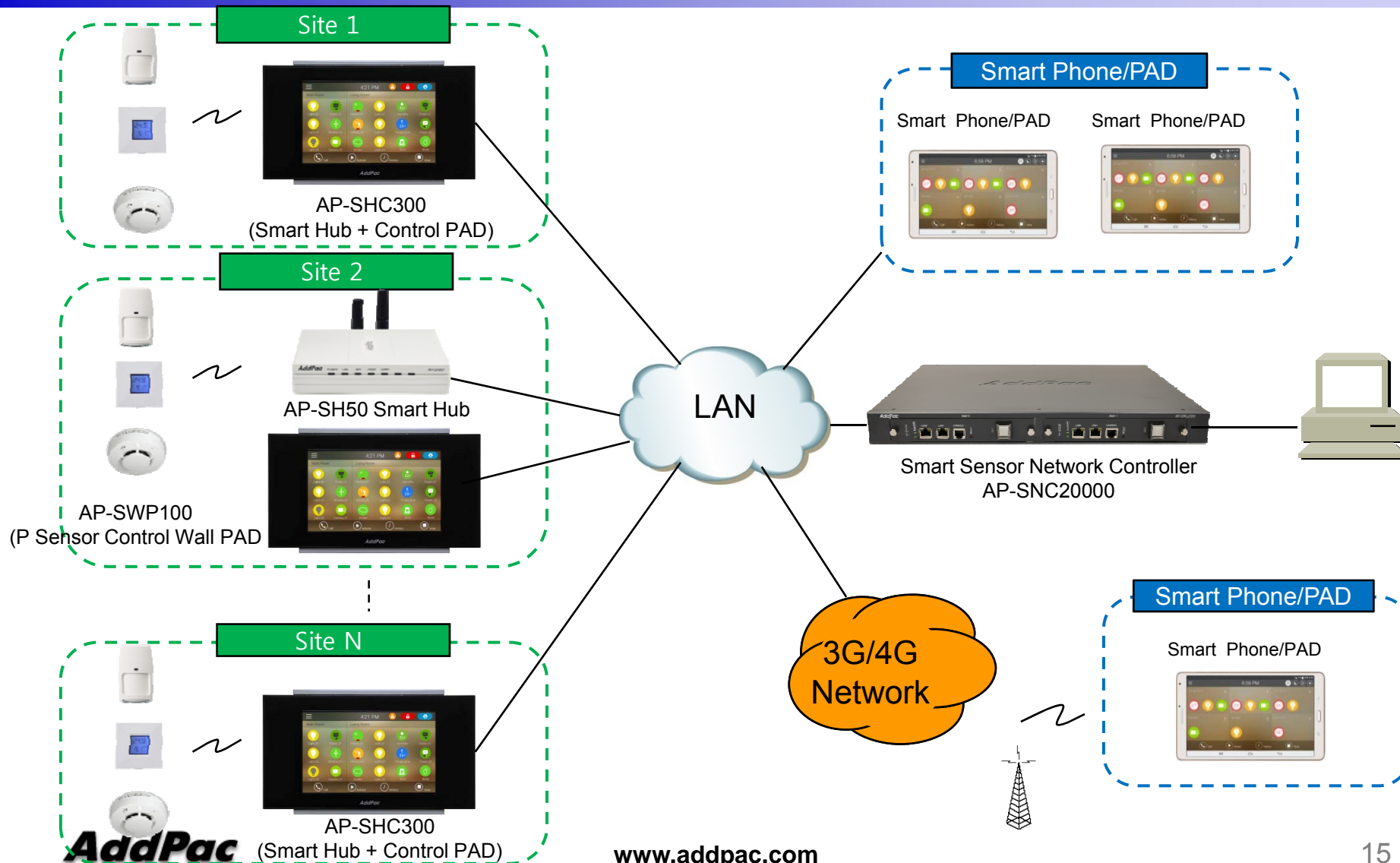
- IP packet filtering
- IP access list
- User authentication function
  - Password Authentication Protocol (PAP)
  - Challenge Handshake Authentication Protocol (CHAP)
- Enable/Disable specific protocols
- Auto-square connect of Telnet session
- Account Management function for multi-level user
- SNMP/TELNET/FTP/HTTP/TFTP port assignment function
- SNMP/TELNET/FTP access list management
- Boot mode security checking function



# AP-SWP100 IP Sensor Control Wall PAD for Z Sensors : Standard Application



# AP-SWP100 Smart Hub Control PAD for Z Sensors : Large Scale Application



# Ordering Information

- **AP-SWP100 IP Sensor Control Wall PAD Hardware**
  - AP-SWP100 IP Sensor Control Wall PAD Main Body
  - RISC Microprocessor with High-end Programmable DSP Architecture
  - 7 Inch LCD with Touch Screen Features
  - Internal MIC, Internal Speaker
  - 1-Port 10/100Mbps Fast Ethernet
  - 1-Port USB 2.0 Interface for Wifi USB Module
  - PoE Interface (Option)
  - Including Network Cable Set & External Power Supply, etc.
- **Built-in APOS Internetworking Software for AP-SWP100**
- **Including 1 Year Hardware Warranty**
- **Product Documents**
  - Install and Operation Guide (PDF)
- **Pricing**
  - AddPac Technology Regional Sales Manager
  - Authorized Sales and Marketing Representatives
  - Please Contact [www.addpac.com](http://www.addpac.com)





# Thank you!

**AddPac Technology Co., Ltd.**  
Sales and Marketing

Phone +82.2.568.3848 (KOREA)

FAX +82.2.568.3847 (KOREA)

E-mail [sales@addpac.com](mailto:sales@addpac.com)