



# AP-SH50ZW

## Smart Hub for ZWave Sensors

High Performance Smart Home Solution for ZWave Sensors



# **AddPac**

**AddPac Technology**

Sales and Marketing

[www.addpac.com](http://www.addpac.com)

# Contents

- Product Overview
- Hardware Specification
- APOS Technology
- Network Protocols
- Network Management
- Security Management
- Application Service
- Ordering Information

# Product Overview

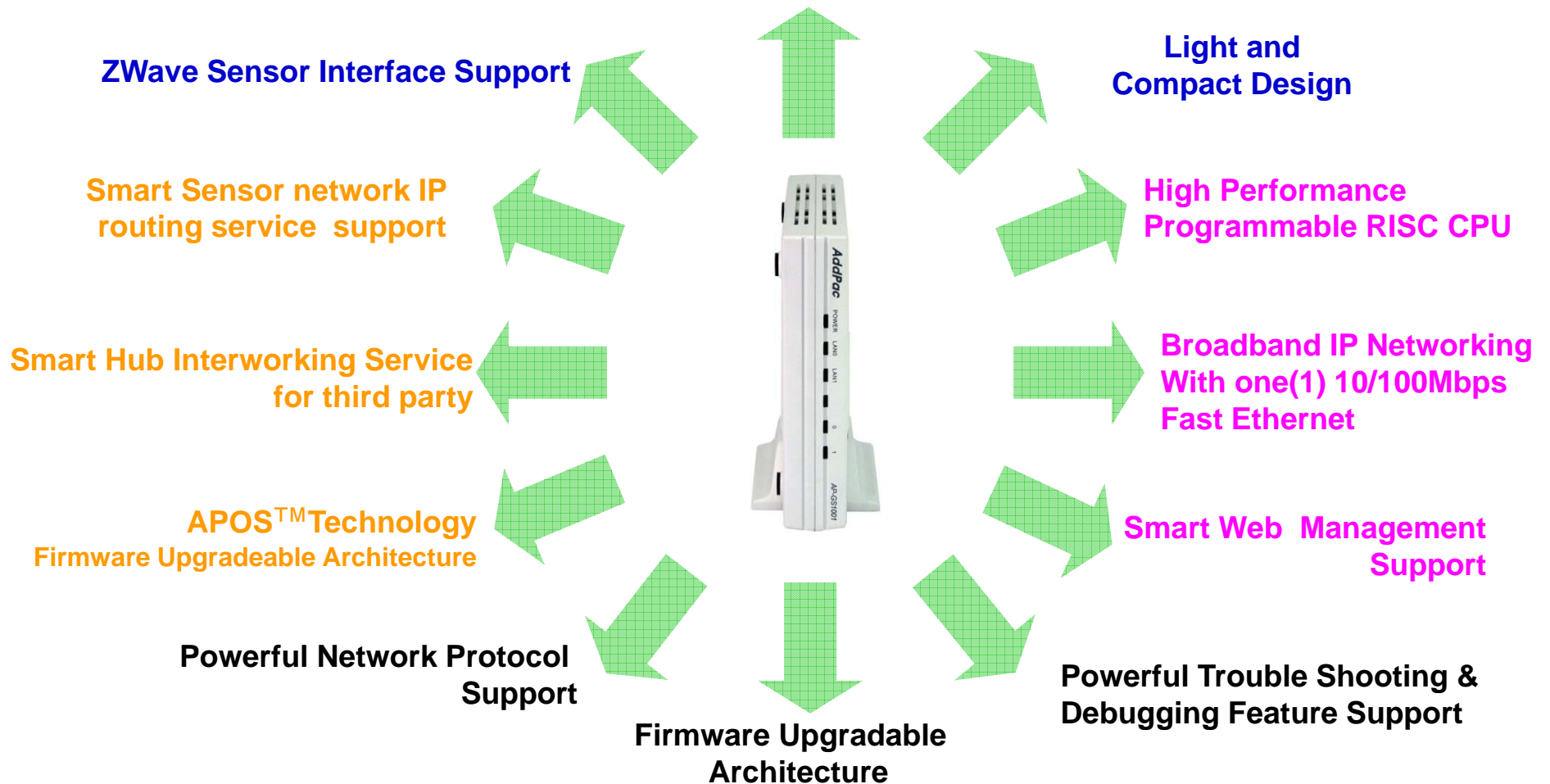
## AP-SH50ZW Smart Hub for ZWave sensors

- Advanced Smart Home Solution
- ZWave Sensor Interface Support
- Smart IP Routing Service Features for Sensor Network
- Smart Wall Pad Interworking Service Features
- Smart Hub Interworking Support for Third Party
- Light SIP Call Manager and RTSP Server & Client Features
- High Performance RISC Programmable Architecture
- One 10/100Mbps Fast Ethernet
- High Performance LAN-to-Zigbee/Zwave Routing Capability
- Powerful Network Protocols (PPPoE, DHCP, Static Routing, etc)
- Firmware Upgradeable Architecture
- Smart Web based Management
- Smart Phone/Tab/PAD Application Software (Android, IOS)
- Light and Compact Design with External Power Supply

# Product Highlights

AP-SH50ZW Smart Hub for ZWave sensors

## Powerful Smart Hub for ZWave sensors

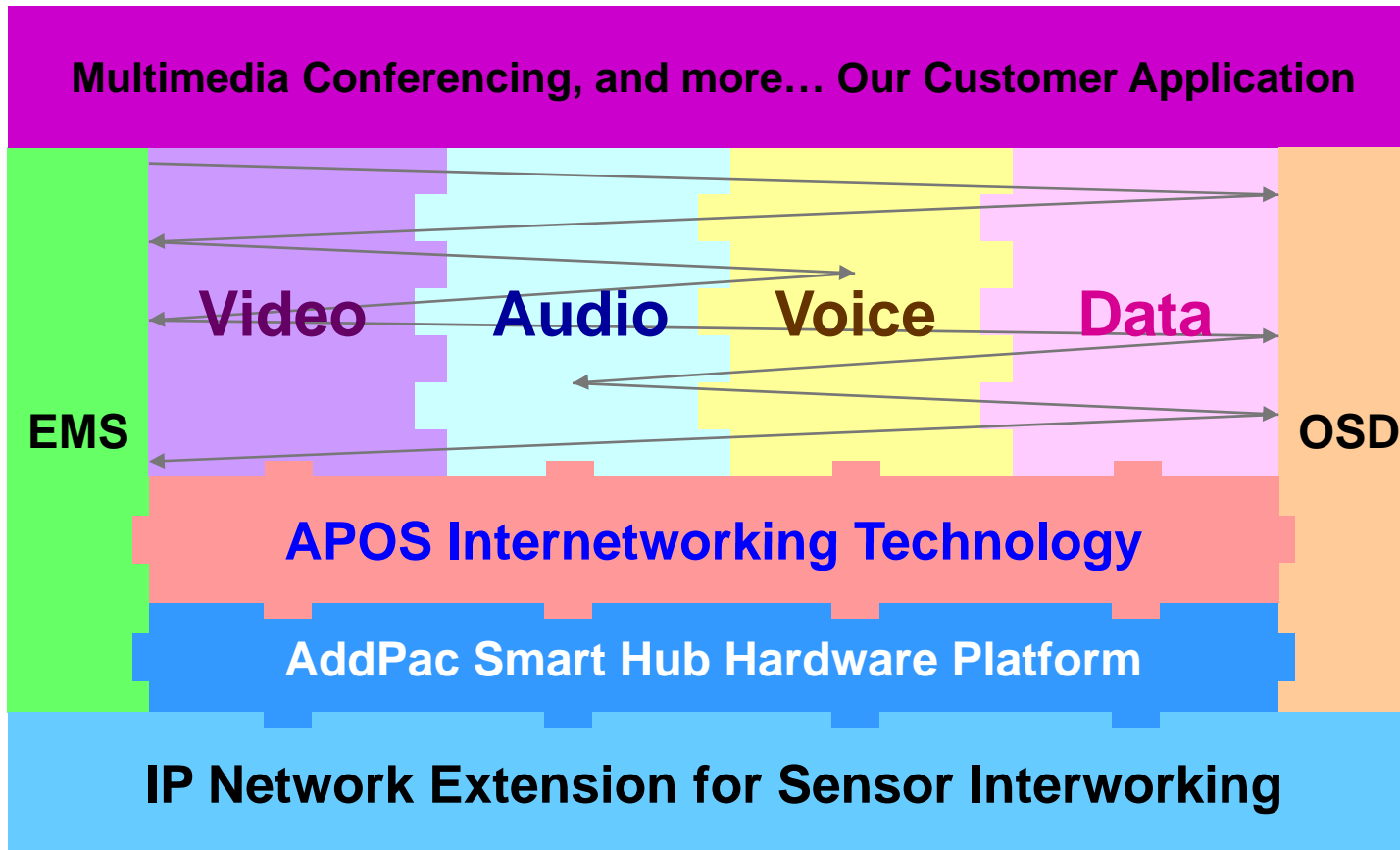


**AddPac**

[www.addpac.com](http://www.addpac.com)

# APOS Technology

AP-SH50ZW Smart Hub for ZWave sensors



- APOS : AddPac Internetworking Operating System
- OSD : On- Screen Display
- EMS : Element Management System

# Hardware Specification

AP-SH50ZW Smart Hub for ZWave sensors

RISC  
CPU

- RISC Microprocessor Computing Power
- 1-Port Zwave Interface
- 1-Port Zwave Antenna
- Speaker & Beacon Port
- Network Interface
  - One(1) 10/100Mbps Fast Ethernet (RJ45)
- Run LED, LAN LED, Port LEDs
- External Power Supply

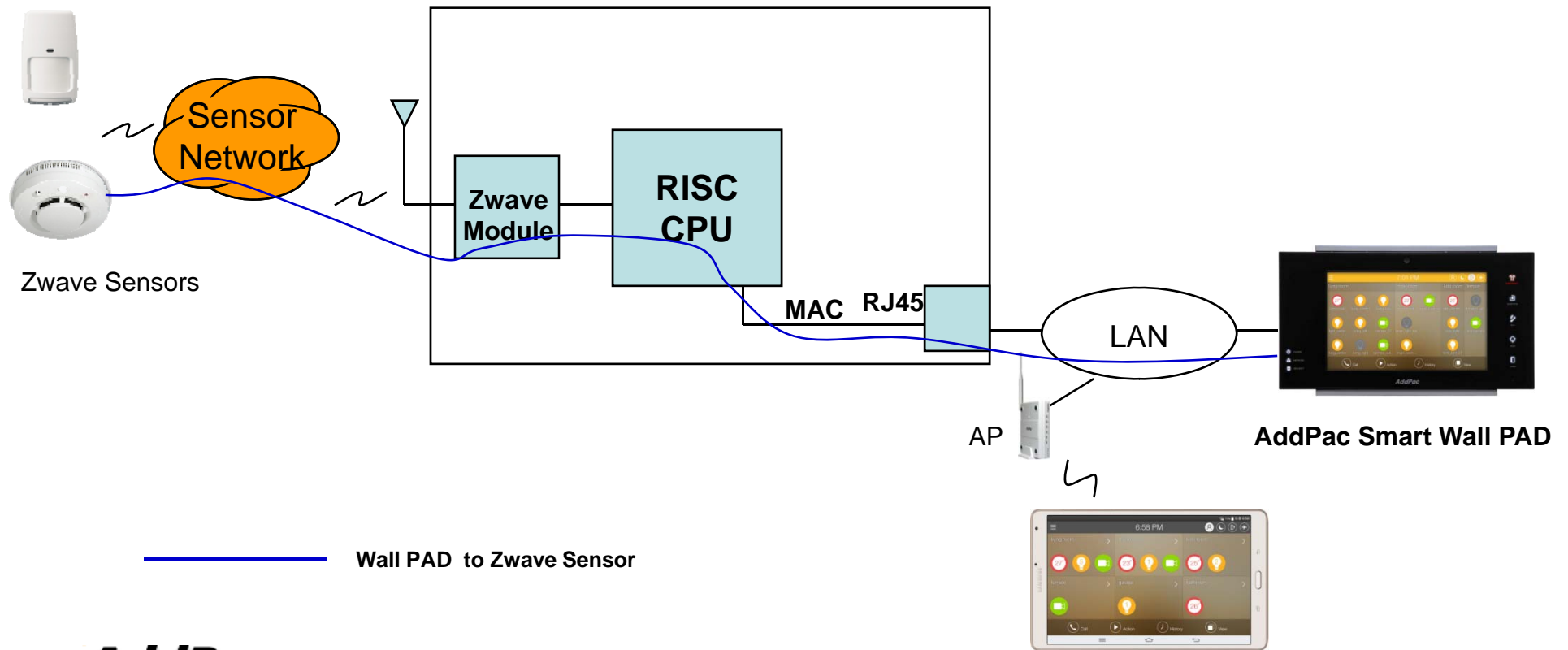
# Hardware Specification

AP-SH50ZW Smart Hub for ZWave sensors



## Smart Hub Service Diagram

AP-SH50ZW Smart Hub Internal H/W Block Diagram



# Hardware Specification

AP-SH50ZW Smart Hub for ZWave sensors

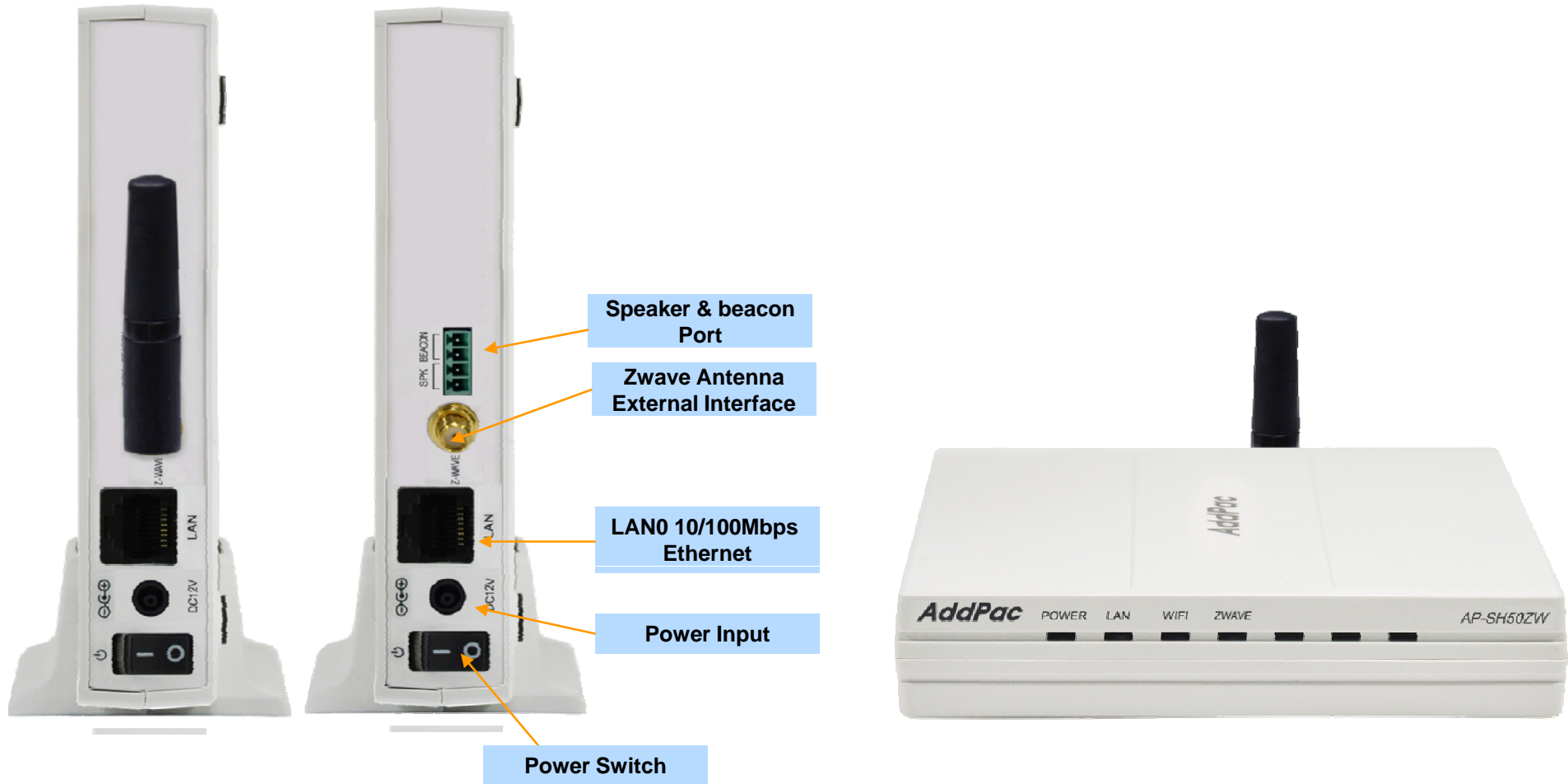
<b>AP-SH50ZW Smart Hub</b>	<b>Basic Specifications</b>
<b>Sensor Interface</b>	One(1)-Port Zwave Interface
<b>Zwave Antenna Interface</b>	External Zwave Antenna
<b>Ethernet Interface</b>	1-Port 10/100Mbps Ethernet Interface(1 x RJ-45)
<b>Flash Memory</b>	4Mbyte High-speed Flash Memory
<b>Base Memory</b>	32Mbyte High-speed SDRAM
<b>Power Requirement</b>	Power Supply Adaptor / VAC 110~220V, 50/60Hz, 5V, 2A
<b>Operating Temperature</b>	0°C ~ 45°C (32 °F ~ 122°F)
<b>Storage Temperature</b>	-40°C ~ 85°C (-40°C ~ 185°F)
<b>Relative Humidity</b>	5% ~ 95% (Non-condensing)
<b>Dimension</b>	142mm x 142mm x 28mm (W x D x H)
<b>Weight (Kg)</b>	0.42Kg



# Hardware Specification

AP-SH50ZW Smart Hub for ZWave sensors

## Network interface Configurations



# Network Protocols

AP-SH50ZW Smart Hub for ZWave Sensors

## Basic Network Protocols

- ARP, IPv4, TCP, UDP, ICMP, SCTP, IGMP, MLD

## Routing Protocol

- IPv4 : Static

## Service Protocol

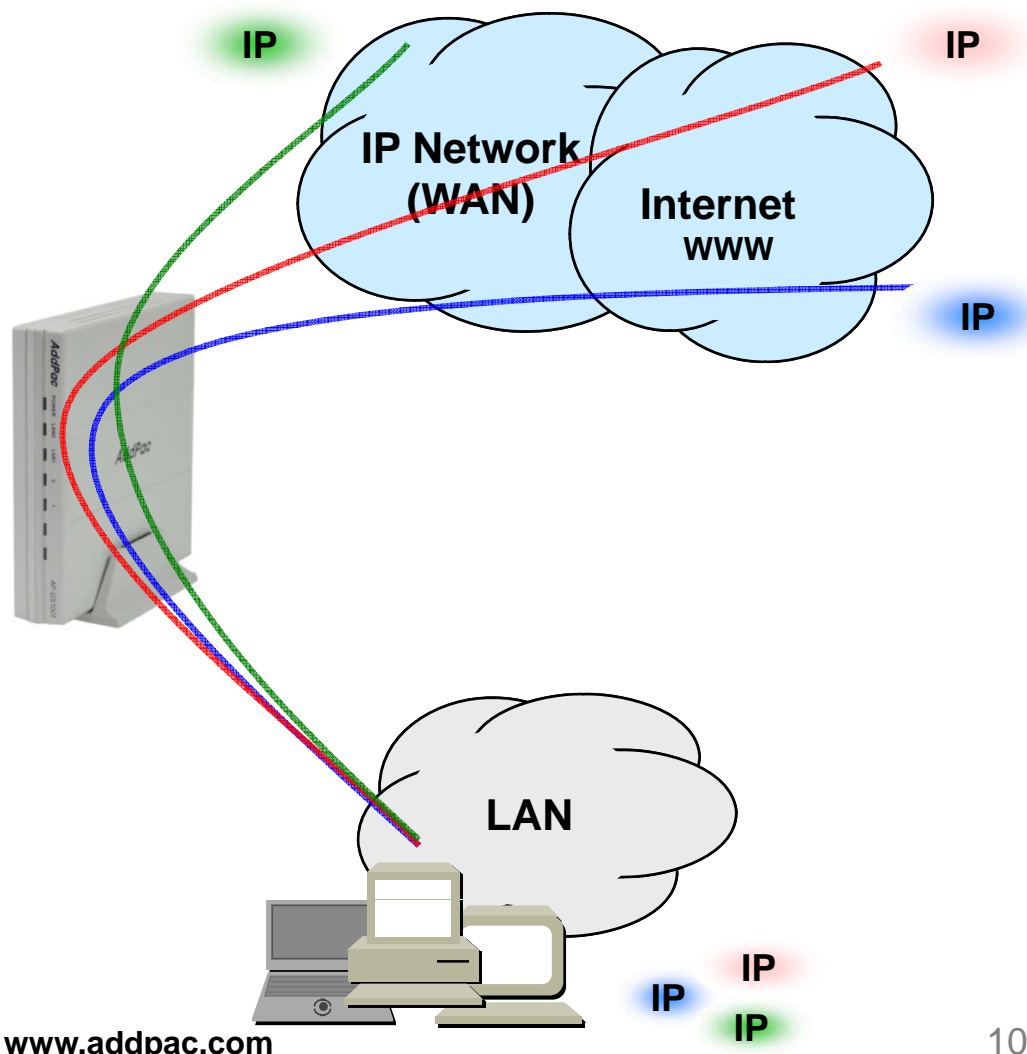
- FTP, Telnet, TFTP, DHCP Server/Relay, SNMP Server
- CDP (Cisco Discovery Protocol)
- DNS Resolver , DDNS(nsupdate)
- Bridge
- Syslog

## IPv4 Address Configuration

- Fixed (Static)
- DHCP
- PPPoE

## Miscellaneous

- Cisco Style CLI
- Standard & Extended IPv4 Access List
- Multi-level User Account Management
- IP accounting
- STUN Client

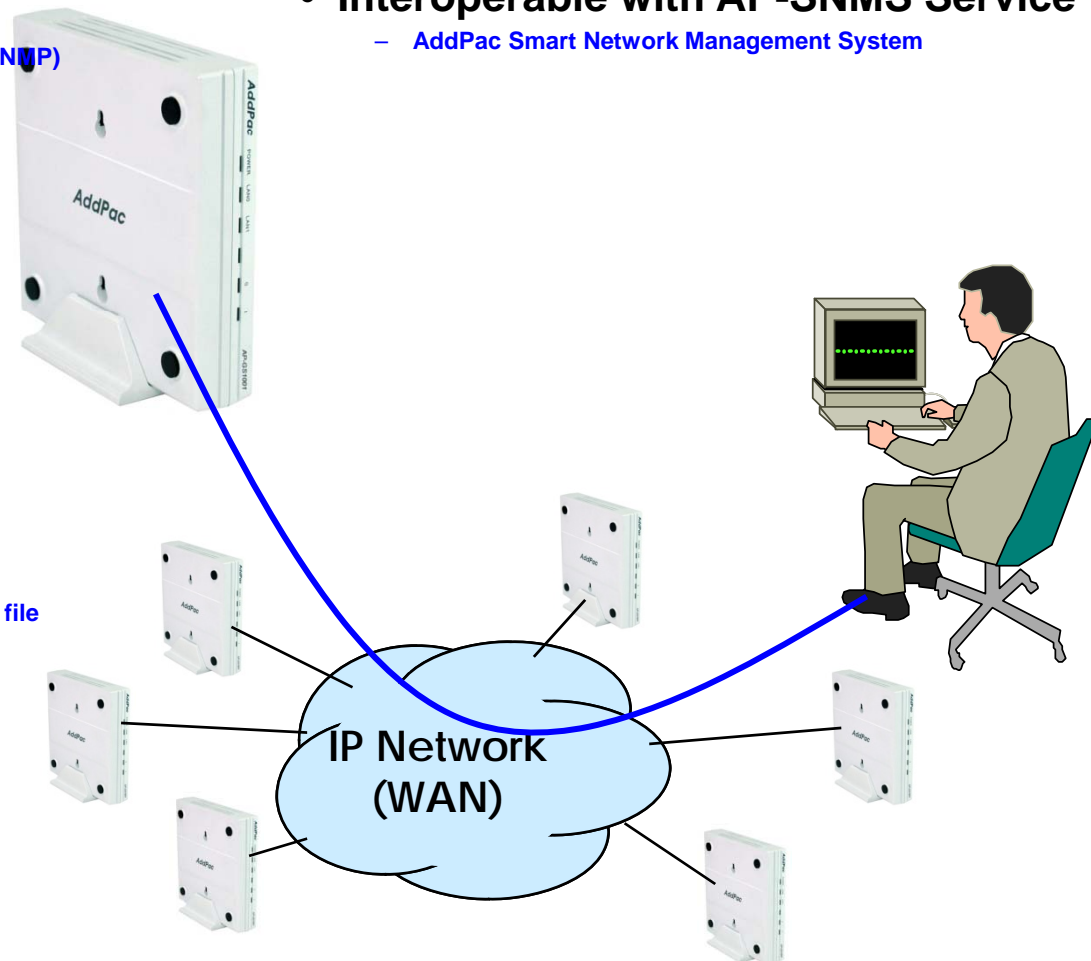


# Network Management

AP-SH50ZW Smart Hub for ZWave sensors

- **SNMP**
  - Standard Simple Network Management Protocol( SNMP) Agent support
  - MIB v1 and v2 Support
- **Web-based Management**
  - Smart Easy Setup
  - Standard Voice Interface
  - Standard PSTN Back-up Interface
- **Watch-dog Function**
  - Hardware, Software watch-dog services
- **Remote Management**
  - Telnet
  - Rlogin
- **Auto Upgrade Service**
  - HTTP server based APOS image and configuration file auto-upgrade support
- **Batch Job Function**
  - Text based script downloading

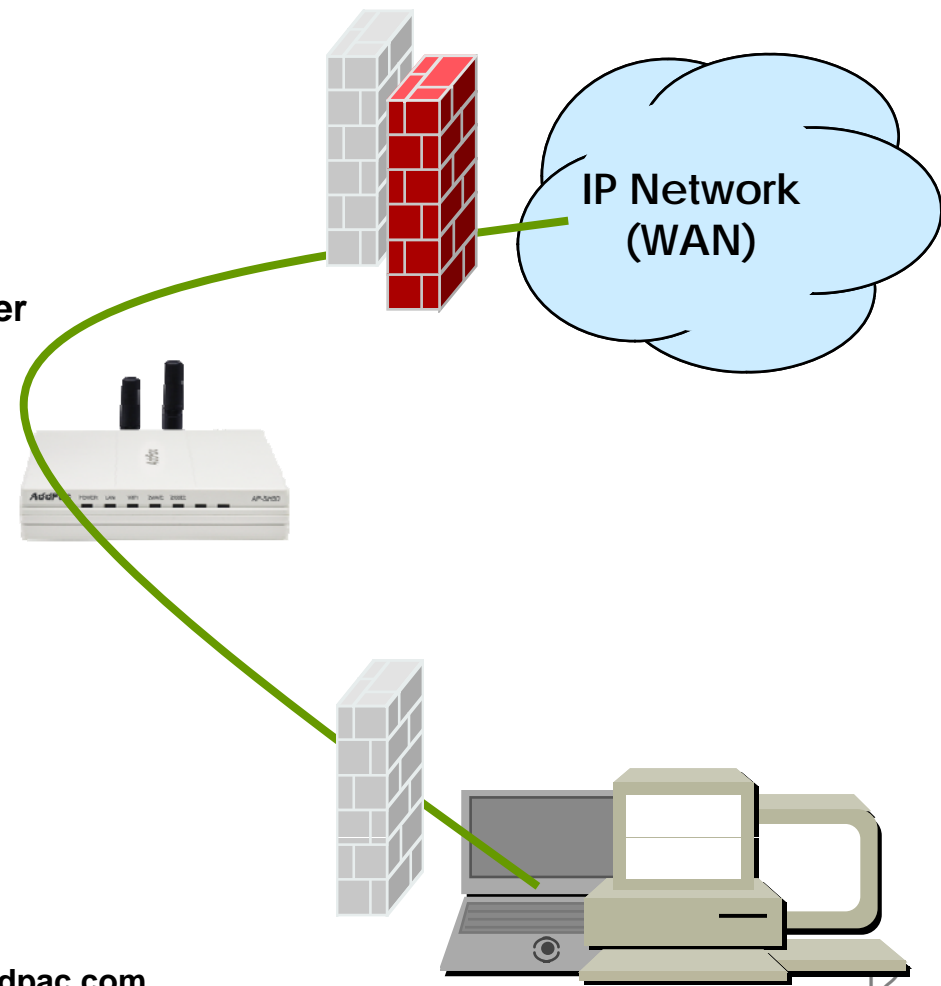
- **Interoperable with AP-SNMS Service**
  - AddPac Smart Network Management System



# Security Management

AP-SH50ZW Smart Hub for ZWave sensors

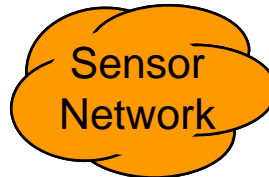
- IP packet filtering
- IP access list
- User authentication function
  - Password Authentication Protocol (PAP)
  - Challenge Handshake Authentication Protocol (CHAP)
- Enable/Disable specific protocols
- Auto-square connect of Telnet session
- Account Management function for multi-level user
- SNMP/TELNET/FTP/HTTP/TFTP port assignment function
- SNMP/TELNET/FTP access list management
- Boot mode security checking function



# Standard Application

AP-SH50ZW Smart Hub for ZWave sensors

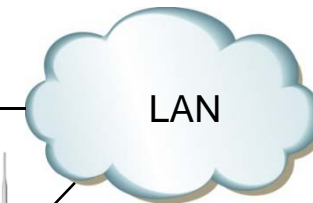
ZWave Sensors



Zwave Sensors

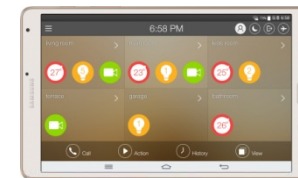


AP-SH50ZW Smart Hub



AddPac Smart Wall PAD

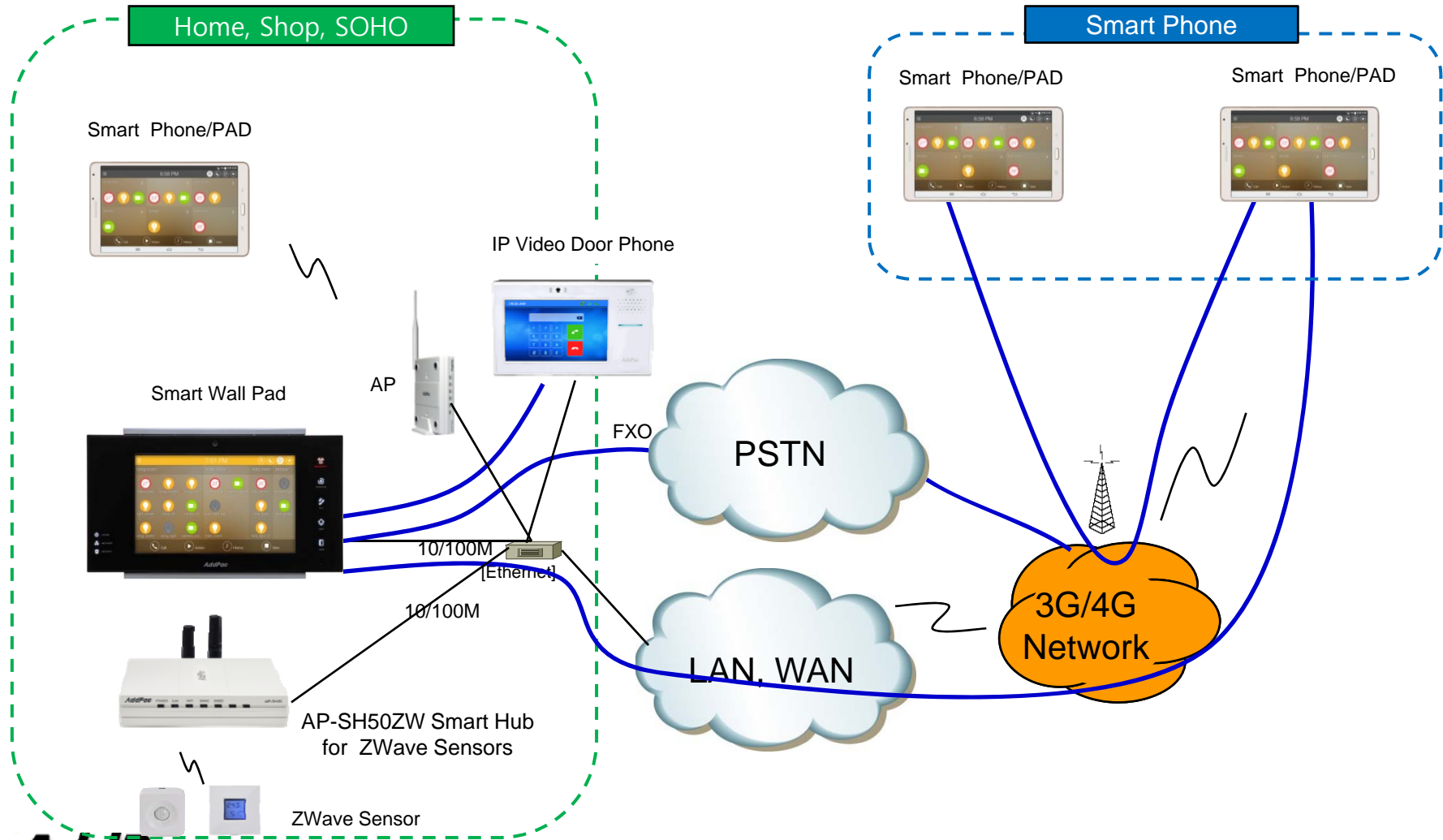
AP



Galaxy Tab

# Standard Application

AP-SH50ZW Smart Hub for ZWave sensors



# Ordering Information

- **AP-SH50ZW Smart Hub Hardware**
  - AP-SH50ZW Smart Hub Main Body
  - RISC Microprocessor
  - 1-Port ZWave Interface with external antenna
  - 1-port 10/100Mbps Fast Ethernet(RJ45)
  - Including Network Cable, Antenna & Ext. Power Supply, etc.
- **Built-in APOS Internetworking Software for AP-SH50ZW**
- **Including 1 Year Hardware Warranty**
- **Product Documents**
  - Install and Operation Guide (PDF)
- **Pricing**
  - AddPac Technology Regional Sales Manager
  - Authorized Sales and Marketing Representatives
  - Please Contact [www.addpac.com](http://www.addpac.com)

## Smart Hub Series

# Thank you!

**AddPac Technology Co., Ltd.**  
Sales and Marketing

Phone +82.2.568.3848 (KOREA)

FAX +82.2.568.3847 (KOREA)

E-mail [sales@addpac.com](mailto:sales@addpac.com)