


Cloud based Sensor Network Control

IoT Solution

- AP-SH50/AP-SHD50 Smart Hub
- AP-SH1000 Smart Hub
- AP-SHC300 Smart Hub Controller
- AP-SWP100 Smart Wall PAD
- AP-SNC2000 Smart Network Control
- AP-ASH100 Smart Home(Android)

[Learn More >](#)

A collection of AddPac IoT devices is displayed against a blue background. On the left, a tablet and a smartphone show a colorful control interface with various icons. In the center, there is a black Smart Hub Controller (AP-SHC300) with a vertical antenna. To its right is a black Smart Wall PAD (AP-SWP100) with a screen showing the same interface. Further right is a black Smart Network Control unit (AP-SNC2000) with multiple ports and a central antenna. On the far right, there are two white Smart Hub units (AP-SH50/AP-SHD50 or AP-SH1000).

AddPac

AddPac Technology

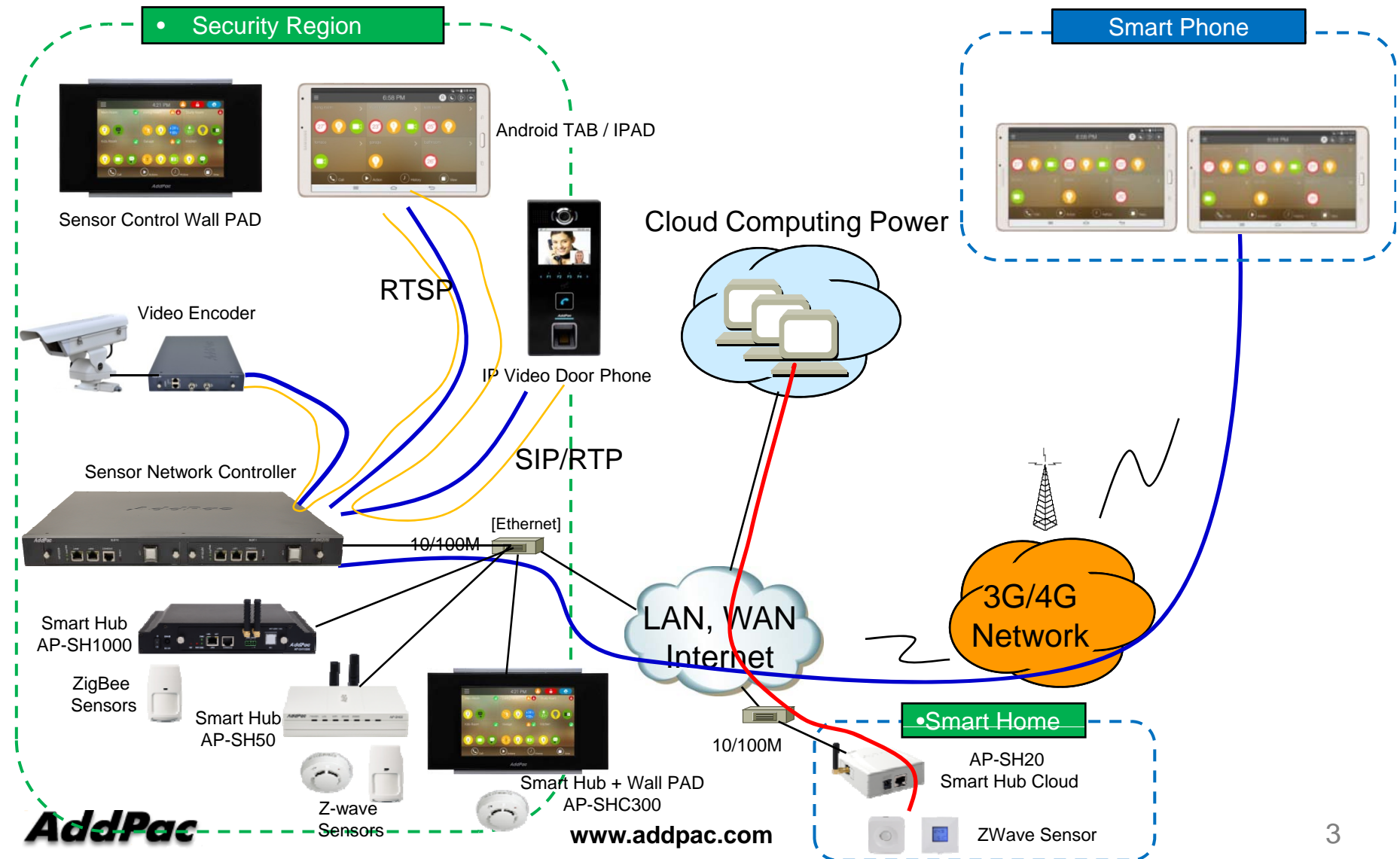
2015, Sales and Marketing

www.addpac.com

Contents

- Smart IoT Solution Network Diagram
- Smart IoT Solution Overview
- Cloud Sensor Network Control Diagram
- Function Requirement for Cloud Service
- Smart Hub Cloud Devices for Large-Scale Operator








Smart IoT Solution Network Diagram






IoT Solution Overview

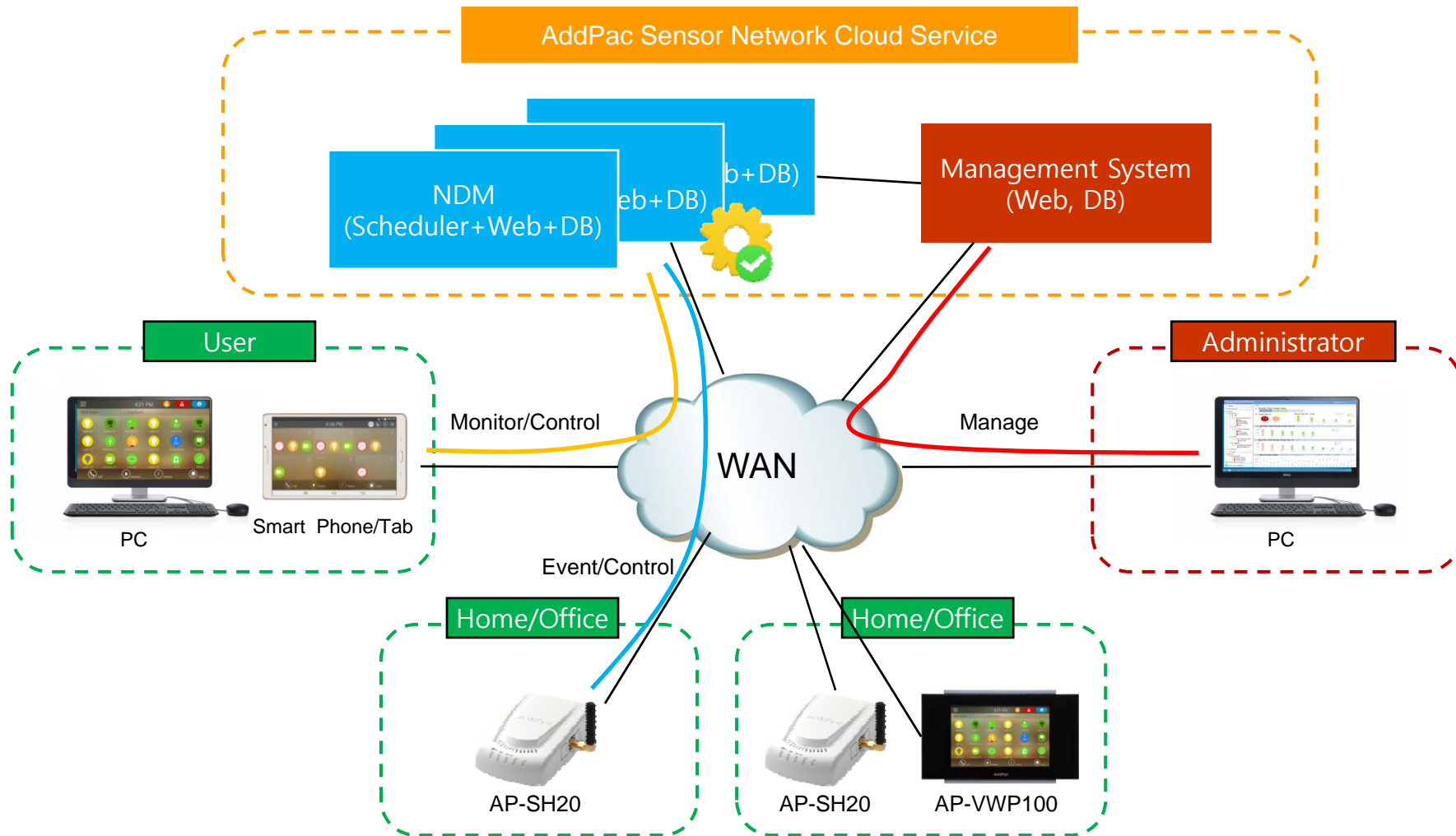
Smart IoT Equipment Table

Smart Home Products	Description	Model
	Smart Hub for ZigBee/ZWave Sensors	AP-SH50, AP-SH50ZW, AP-SHD100
	Smart Hub Cloud for ZWave Sensors	AP-SH20, AP-SH20W
	Enterprise Smart Hub	AP-SH1000
	Smart Sensor Network Controller	AP-SNC2000
	Smart Hub + Wall PAD	AP-SHC300
	Sensor Control Wall PAD	AP-SWP100
	Smart Phone and Tab/Pad Appl.	AP-ASH100, AP-ISH100



Cloud based Sensor Network Control Scheme

Cloud Sensor Network Control Diagram





Function Requirement for Cloud Service

- NDM : Network Device Management
 - Multiple Subscriber Model
 - Secure Connection (HTTPS) to Sensor Hub (AP-SH20)
 - Secure Connection (HTTPS) to Wall Pad (AP-VWP100)
 - Sensor Device Profile Support (Platform Model)
- Manager
 - Subscription Management
 - NDM Provisioning
 - Hub and Wall Pad Management
 - Backup/Restore/Upgrade
 - Security Management (Option)



Smart Hub Cloud Devices for Large-Scale Operator

Smart Hub Cloud Equipment Comparison Table

Model	AP-SH20	AP-SH20ZW
Service Features		
Sensor Type	Wireless	Wireless
	ZWave	ZWave
External Zwave Antenna	Support	Support
Smart Appl. for Phone, PAD	Support	Support
Cloud Computing based Smart Web Manager	Support	Support
LAN Port	1 x 10/100Mbps	1 x WiFi Interface
PoE(Optional)	Option	N/A

Product Overview

AP-SH20 Smart Hub Cloud for ZWave sensors

- Cloud based Advanced Smart Home Solution
- ZWave Sensor Interface Support
- External ZWave Antenna Support for Performance
- Smart IP Routing Service Features for Sensor Network
- High Performance RISC Programmable Architecture
- One 10/100Mbps Fast Ethernet or WiFi LAN Interface
- High Performance LAN-to-ZWave Routing Capability
- Cloud Server based Smart Web based Management
- Cloud Server based Smart Phone/Tab/Pad Application Software
- Light and Compact Design with External Power Supply

Hardware Specification

AP-SH20 Smart Hub Cloud for ZWave sensors

RISC
CPU

- RISC Microprocessor Computing Power
- 1-Port ZWave Interface
- 1-Port ZWave Antenna
- Network Interface
 - AP-SH20 : One(1) 10/100Mbps Fast Ethernet (RJ45)
 - AP-SH20W : One(1) WiFi LAN Interface with Antenna
- Run LED, LAN LED, Port LEDs
- External Power Supply

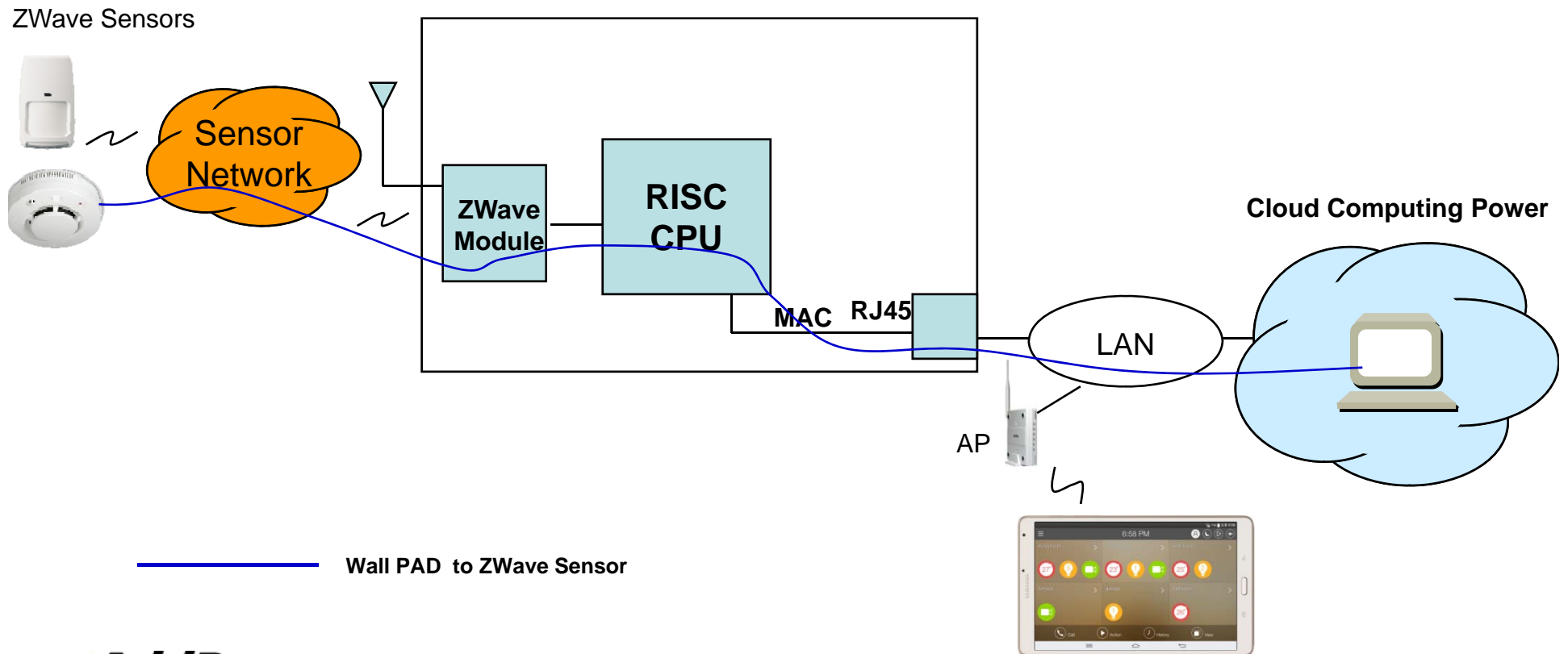
Hardware Specification

AP-SH20 Smart Hub Cloud for ZWave sensors



Smart Hub Service Diagram

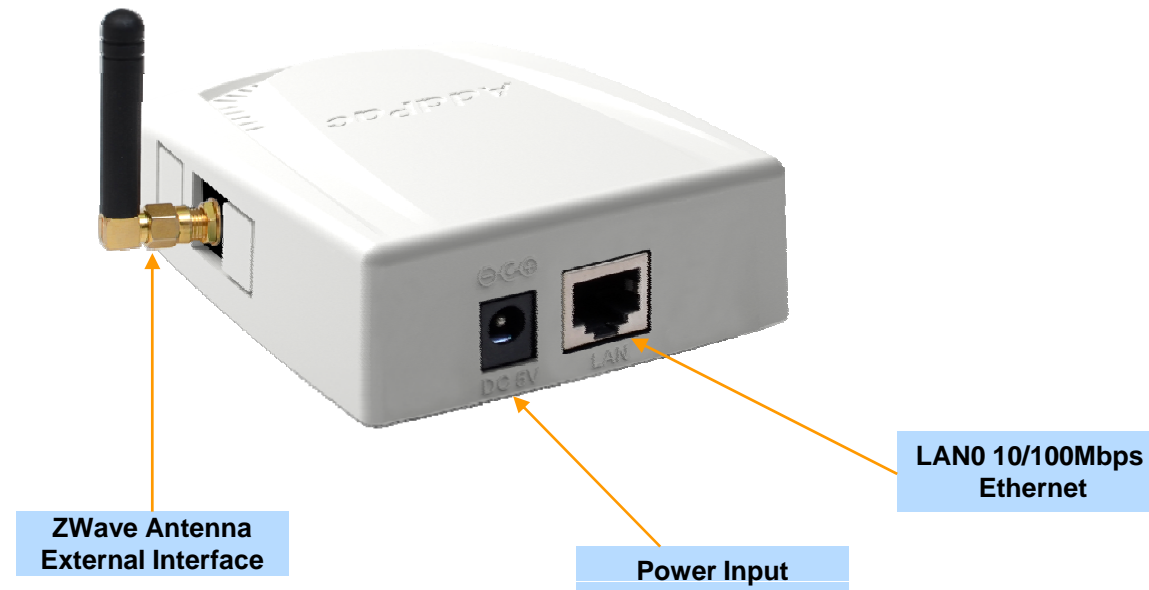
AP-SH20 Smart Hub Internal H/W Block Diagram



Hardware Specification

AP-SH20 Smart Hub Cloud for ZWave sensors

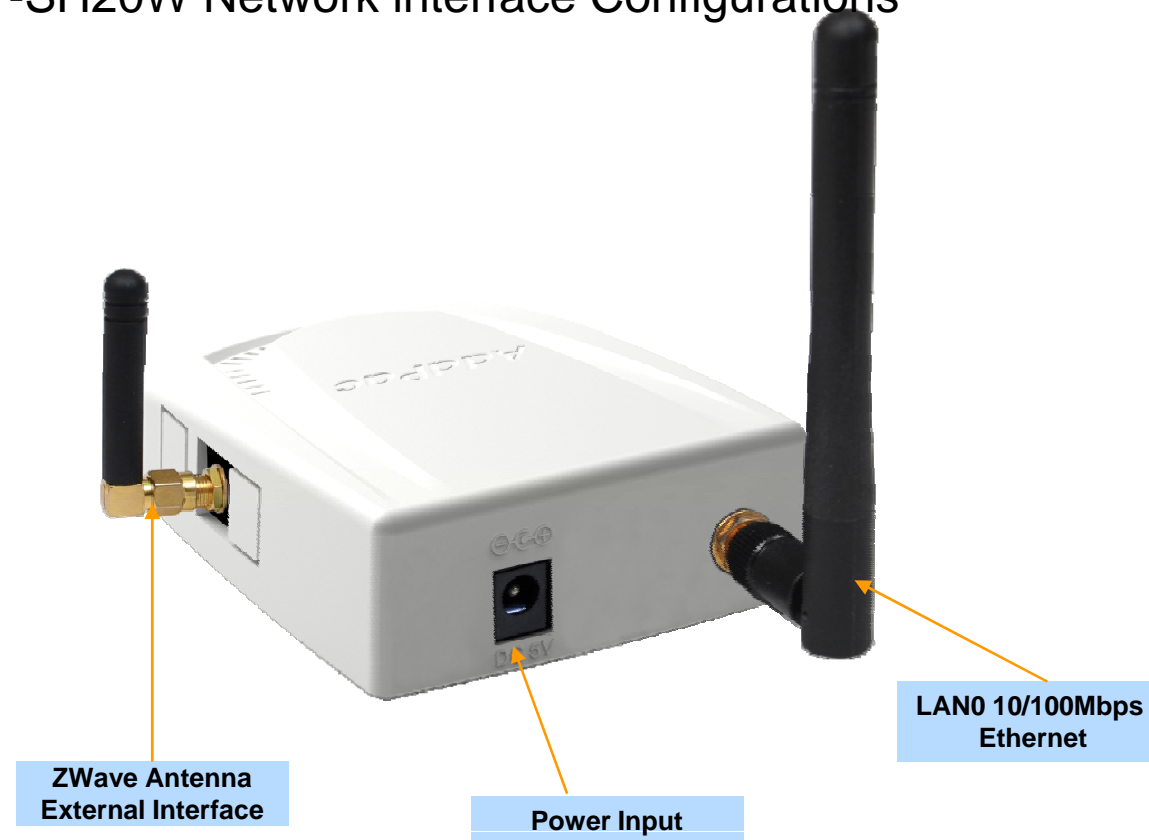
AP-SH20 Network interface Configurations



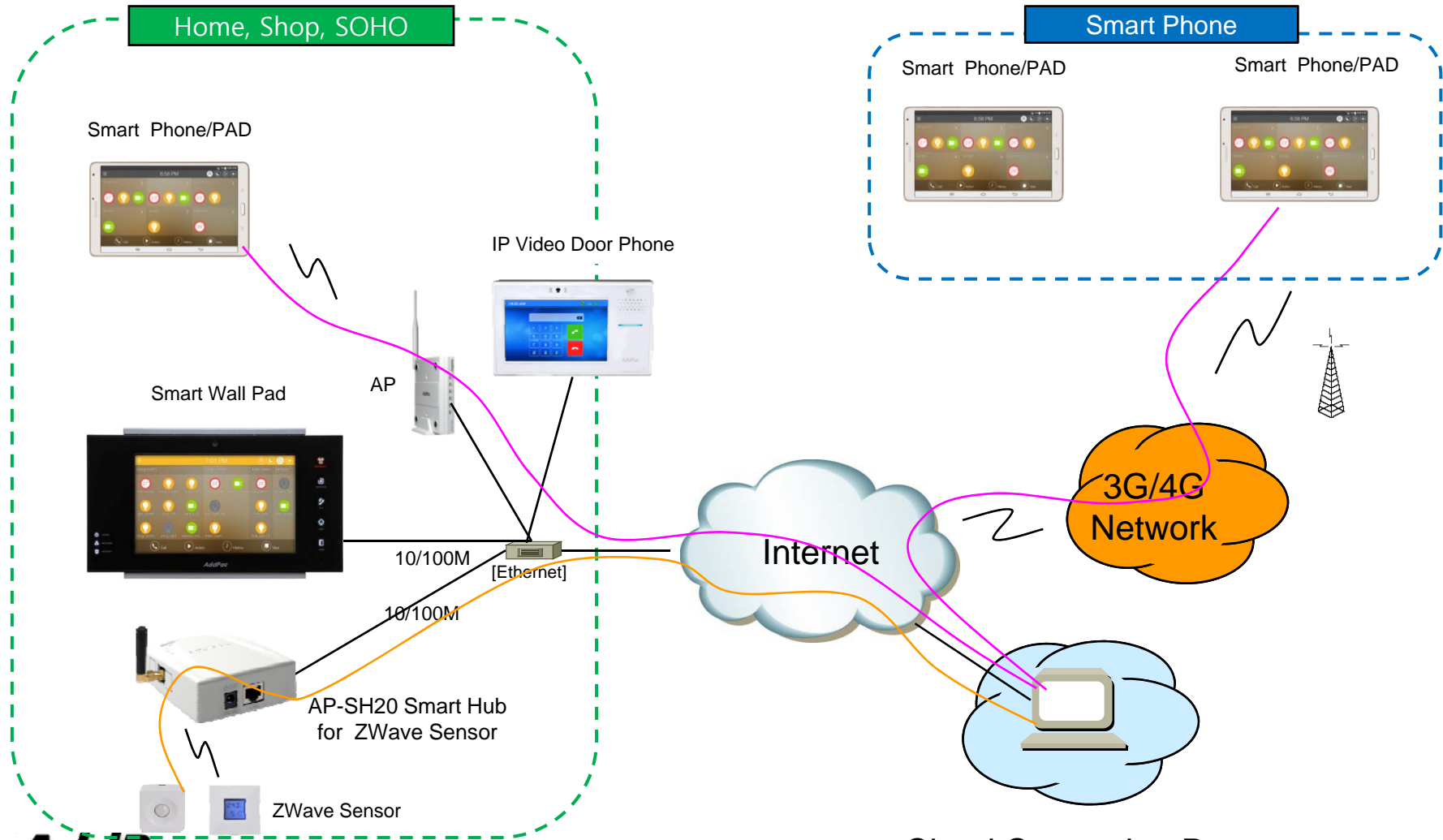
Hardware Specification

AP-SH20 Smart Hub Cloud for ZWave sensors

AP-SH20W Network interface Configurations



Standard Application





Thank you!

AddPac Technology Co., Ltd.
Sales and Marketing

Phone +82.2.568.3848 (KOREA)

FAX +82.2.568.3847 (KOREA)

E-mail sales@addpac.com