

AP-EIP100

Emergency IP Phone

High Performance Emergency IP Phone Solution

Preliminary Product Overview

(Without notice, following described technical spec. can be changed)



AddPac

AddPac Technology

Sales and Marketing

www.addpac.com

Contents

AP-EIP100 Emergency IP Phone

- Product Overview
- Hardware Specification
- Software Service
- Audio & Voice Service and Features
- Network Service and Features
- Application Area
- Ordering Information



Product Overview

AP-EIP100 Emergency IP Phone

- Emergency IP Phone Solution
- High-performance Audio, and Voice Service
- Firmware Upgradeable Architecture
- VoIP Solution with Outstanding Network Service Capability
- Audio Privacy Protection

Product Highlights

AP-EIP100 Emergency IP Phone

High Performance Emergency IP Phone Solution

Emergency Button & Speaker Phone

Internal MIC & SPEAKER
3x4 Key PAD, Hand Set

Excellent Voice Quality
G726/711/G.729/G.723 etc
High Quality Speaker Phone
& Sound

High Performance RISC CPU
(Embedded DSP for Codec)

Full Duplex,
Acoustic Echo Canceller

Various Call Control
Scenario Support (IP-PBX)

APOS™ Technology
Network Protocol

State-of-art Signaling
SIP Stack

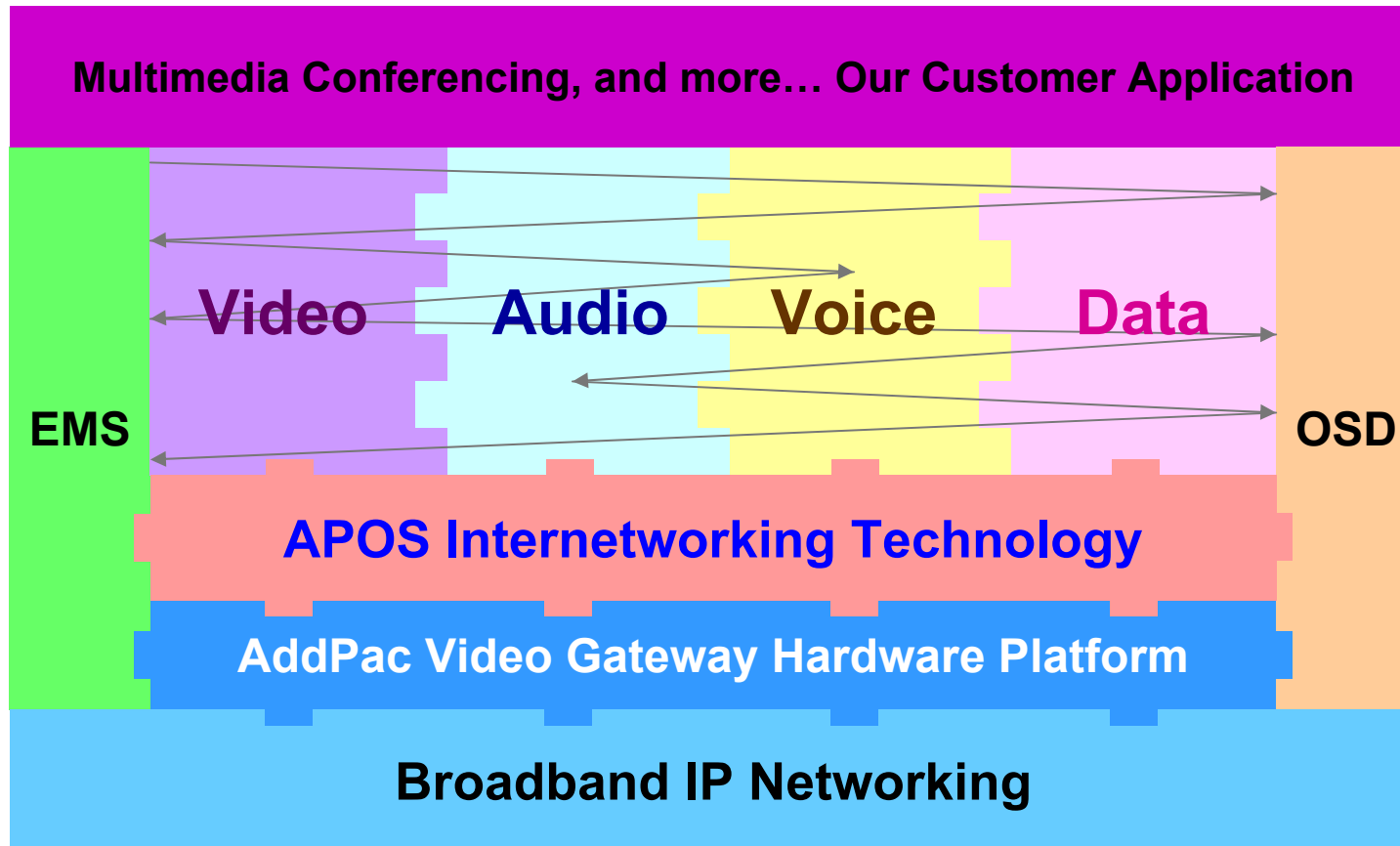
IP based Network Protocol
& Video/Voice Traffic QoS

Broadband IP Networking
With a 10/100Mbps Ethernet

Power over Ethernet Support

Multimedia Service

AP-EIP100 Emergency IP Phone



- APOS : AddPac Internetworking Operating System
- OSD : On- Screen Display
- EMS : Element Management System

Hardware Specification

AP-EIP100 Emergency IP Phone

- **RISC+DSP Microprocessor Computing Power (Dual Processor Architecture)**
- **Audio and Voice Interface**
 - Internal MIC
 - Internal Speaker
 - Hand Set, On/Off Hook
 - 3 x 4 keyPAD
- **Emergency Call Button**
- **Network Interface**
 - One(1) 10/100Mbps Fast Ethernet
- **Power Supply**
 - Power over Ethernet

Hardware Specification

AP-EIP100 Emergency IP Phone

Hardware Specifications

AP-EIP50 IP Phone	Basic Specifications
CPU	RISC+ DSP Microprocessor
Ethernet Interface	1-Ports 10/100Mbps Ethernet Interface(RJ-45)
Flash Memory	4Mbyte High-speed Flash Memory
Base Memory	16Mbyte High-speed SDRAM
Power Requirement	Power over Ethernet, 10Watt (5V 2A)
Operating Temperature	0°C ~ 45°C (32 °F ~ 122°F)
Storage Temperature	-40°C ~ 85°C (-40°C ~ 185°F)
Relative Humidity	5% ~ 95% (Non-condensing)
Dimensions	235mm x 350mm x 80mm (W x H x D)
Weight (g)	4.3 Kg



Hardware Specification

AP-EIP100 Emergency IP Phone

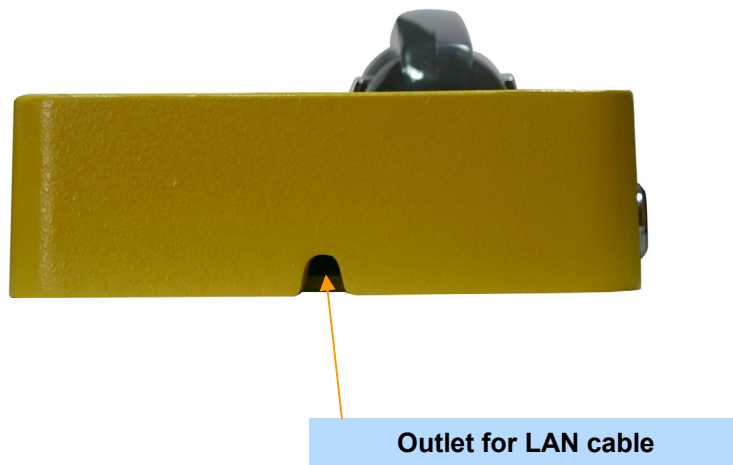
Front Side



Hardware Specification

AP-EIP100 Emergency IP Phone

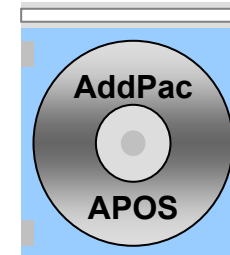
Bottom Side



Software Service

AP-EIP100 Emergency IP Phone

- **Built-in AddPac APOS Internetworking Software**
 - Scalability, Functionality, and Stability Features
 - Audio Traffic QoS Control
- **Programmable Video, Audio, and Voice Services**
 - Audio, and Voice Codec
- **Firmware Upgradeable Architecture**
- **Industry Standard IP based Network Protocol Features**



Network Service and Features

AP-EIP100 Emergency IP Phone

- **Network Managements**
 - Standard SNMP Agent (MIB v2) Support
 - Remote Management using Console, Telnet
 - Web based Management using HTTP Server Interface
- **Security Functions**
 - Standard & Extended IP Access List
 - Enable/Disable for Specific Network Protocols
 - Multi-level User Account Management
 - Auto-disconnect for Telnet/Console Sessions
 - PPP User Authentication Supports (PAP & CHAP)
- **Operation & Managements**
 - System Performance Analysis for Process, CPU, Connection Interface
 - Debugging, System Auditing, and Diagnostics Support
 - System Booting and Auto-rebooting with Watchdog Feature
 - System Managements with Data Logging
 - IP Traffic Statistics with Accounting

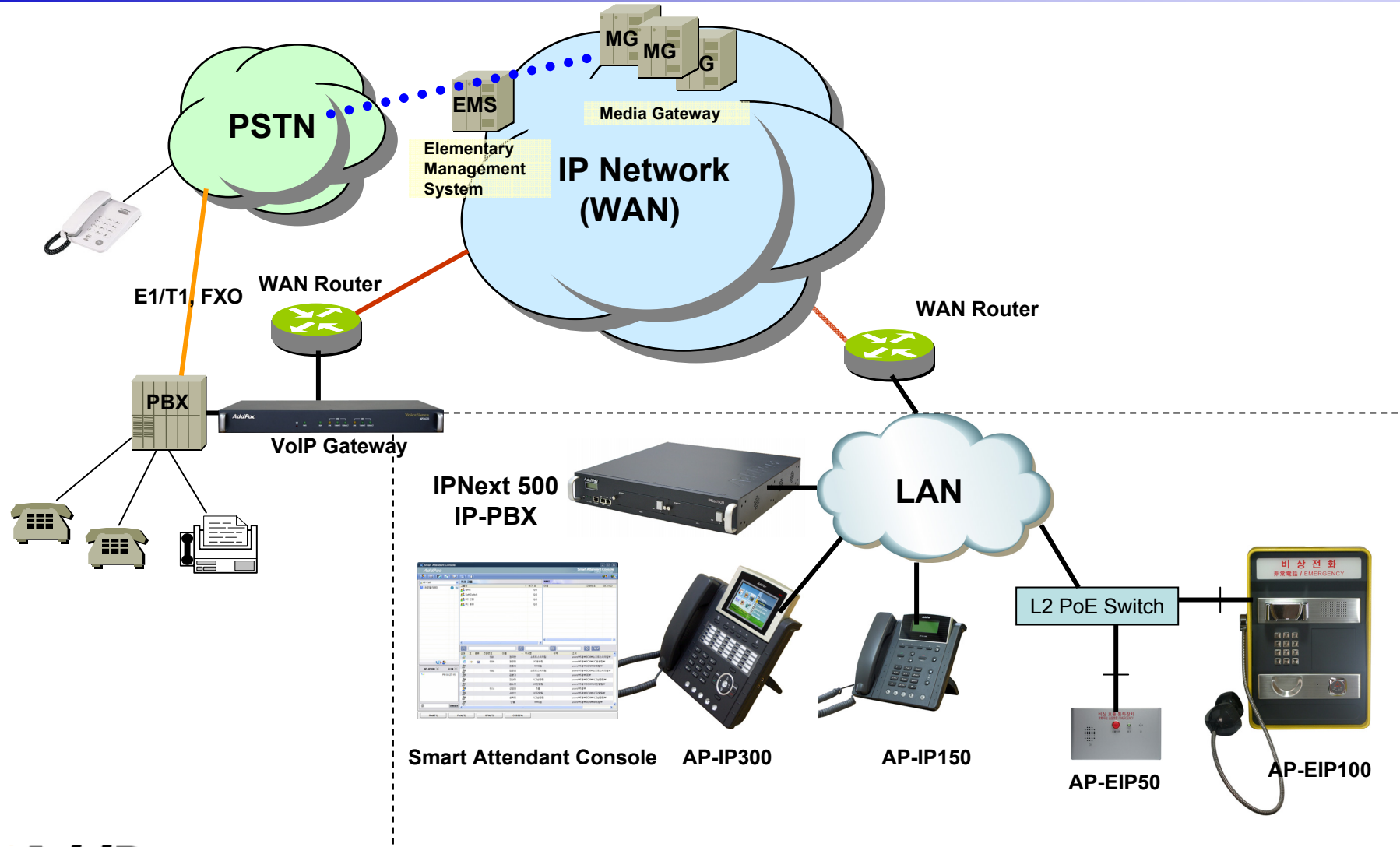
Network Service and Features

AP-EIP100 Emergency IP Phone

- **Network Managements**
 - DHCP Server & Relay Functions
 - Network Address Translation (NAT) Function
 - Port Address Translation (PAT) Function
 - Transparent Bridging (IEEE Standard) Function
 - Spanning Tree Bridging Protocol Support
 - Remote Bridging Support
 - Concurrent Routing and Bridging Support
 - Cisco Style Command Line Interface (CLI)
 - Network time Protocol (NTP) Support

Standard IP-PBX Application

AP-EIP100 Emergency IP Phone



Ordering Information

- **AP-EIP100 Emergency IP Phone Hardware**
 - AP-EIP100 Emergency IP Phone Main Body
 - RISC Microprocessor with Embedded DSP Architecture
 - Internal Speaker, MIC, 3x4 KeyPAD, Hand Set
 - Emergency Call Button
 - One(1) 10/100Mbps Fast Ethernet
- **Built-in APOS Internetworking Software for AP-EIP100**
- **Including 1 Year Hardware Warranty**
- **Product Documents**
 - Install and Operation Guide (PDF)
- **Pricing**
 - AddPac Technology Regional Sales Manager
 - Authorized Sales and Marketing Representatives
 - Please Contact www.addpac.com



Thank you!

AddPac Technology Co., Ltd.
Sales and Marketing

Phone +82.2.568.3848 (KOREA)

FAX +82.2.568.3847 (KOREA)

E-mail sales@addpac.com