



AddPac VoIP Gateway Series

NTT DID(Direct Inward Dialing) Overview



AddPac

AddPac Technology

2011, Sales and Marketing

www.addpac.com

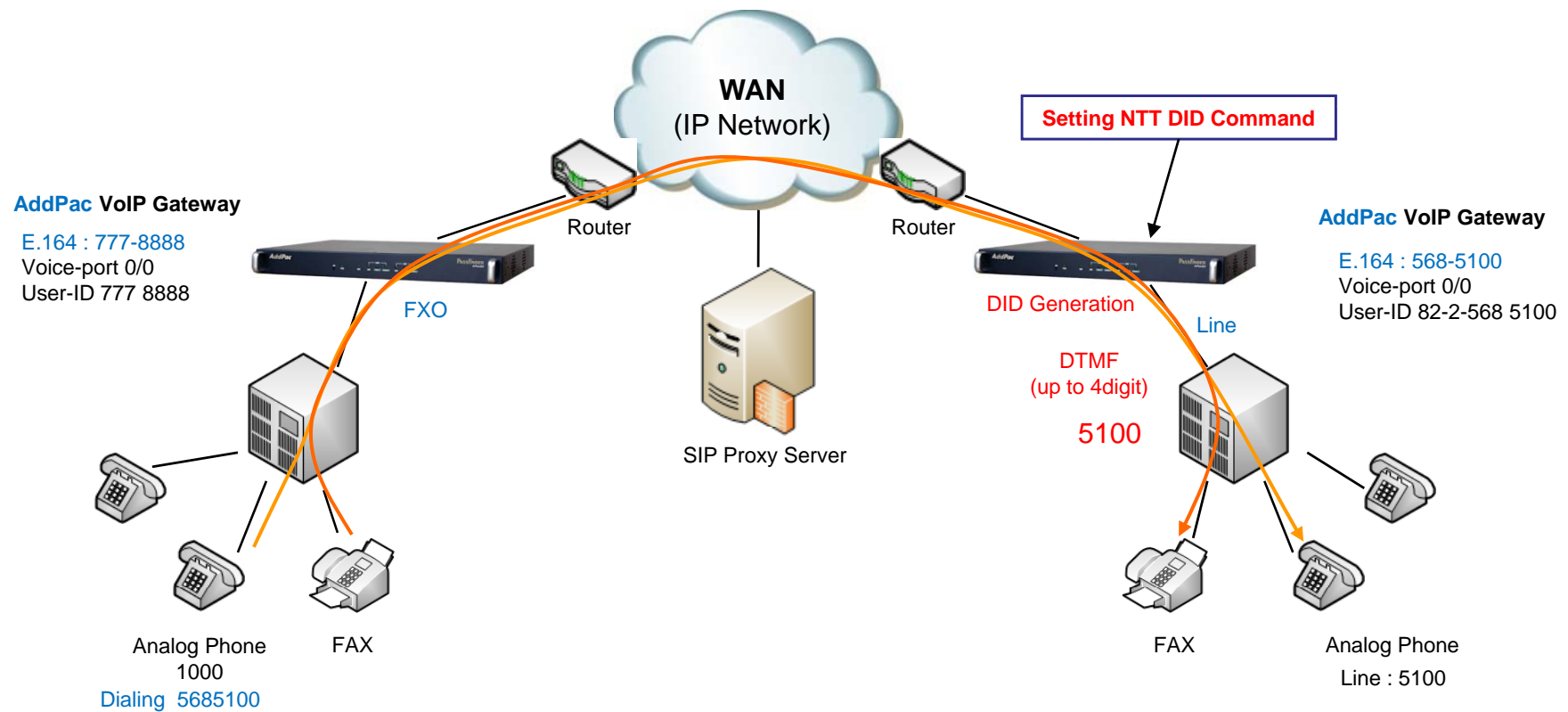
Contents

- NTT DID Service
- NTT DID Network Diagram (NTT-PB : DTMF)
- NTT DID Network Diagram (NTT-Modem: FSK)
- NTT DID Signaling Flow(SIP)
 - FXS
 - FXO
 - ISDN PRI
- Command Line Interface

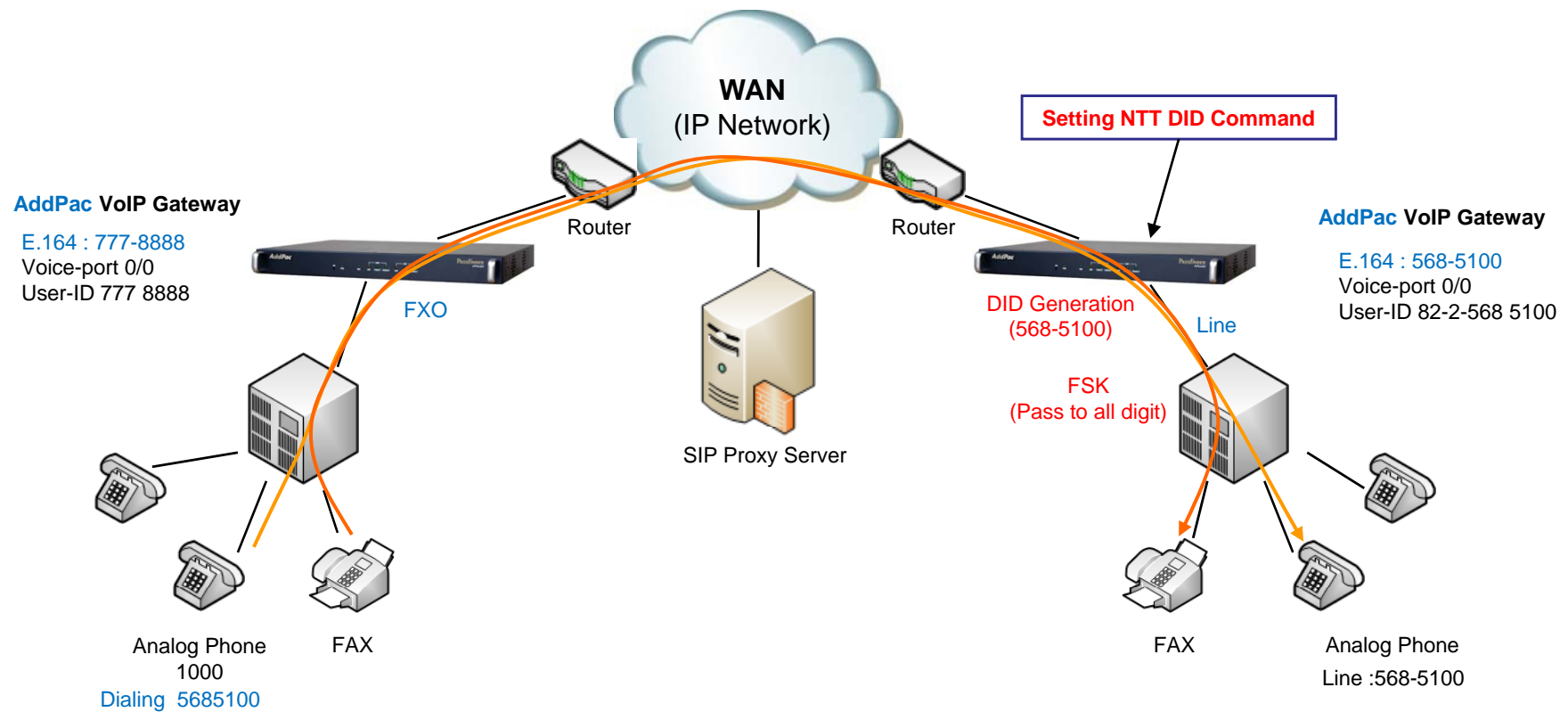
NTT DID Service

- The VoIP gateway supports DTMF, Modem and PB(Push/Button Dial Signal) types for tone generation.
- It is applied to the FXS/FXO/ISDN-PRI ports.
- DID enables callers to dial directly into an extension on a PBX without having to use an auto attendant.
- The dialed extension number is forwarded to the PBX and the call is connected to the local telephone.
- AddPac's all VoIP products supports the feature and it can be enabled/disabled by configuration.

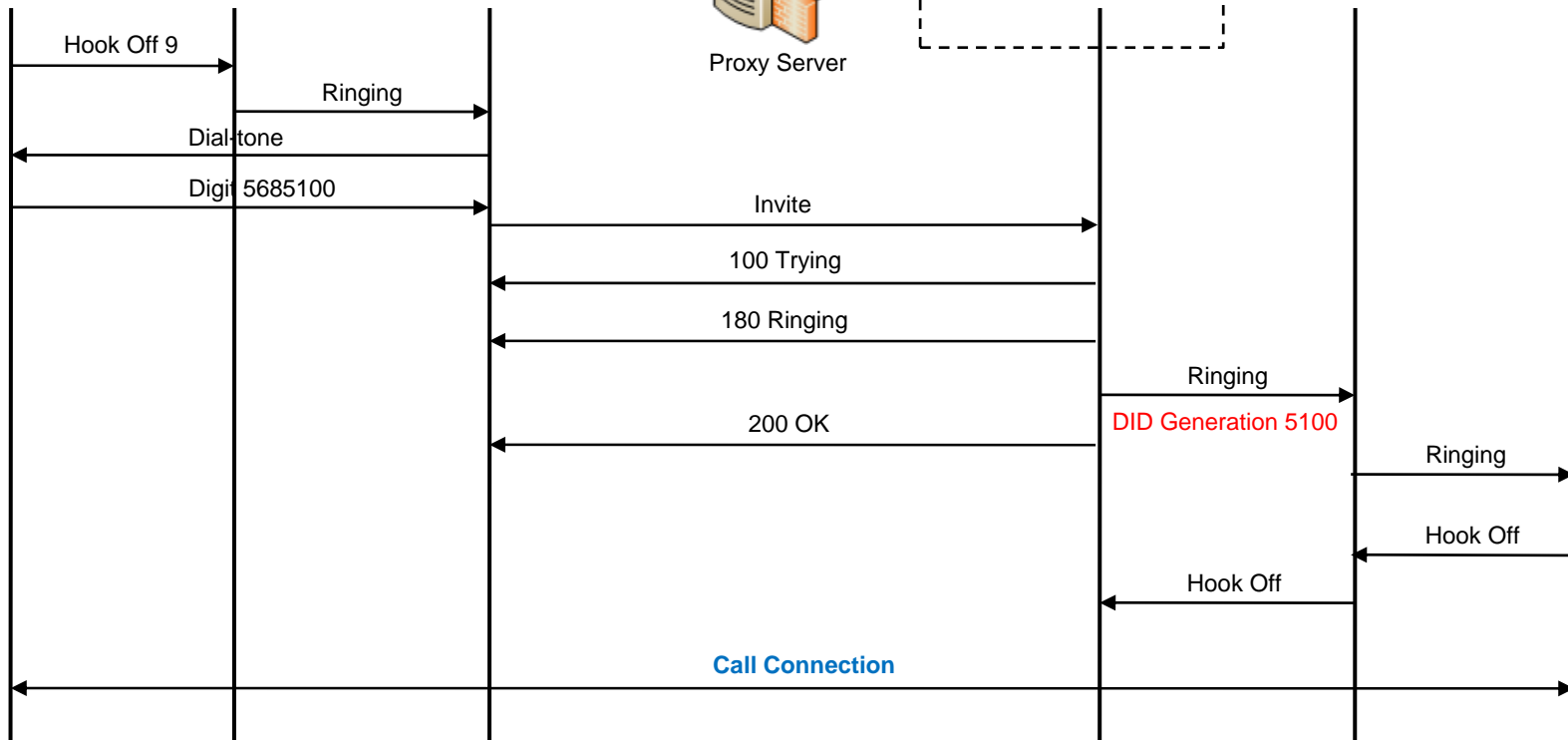
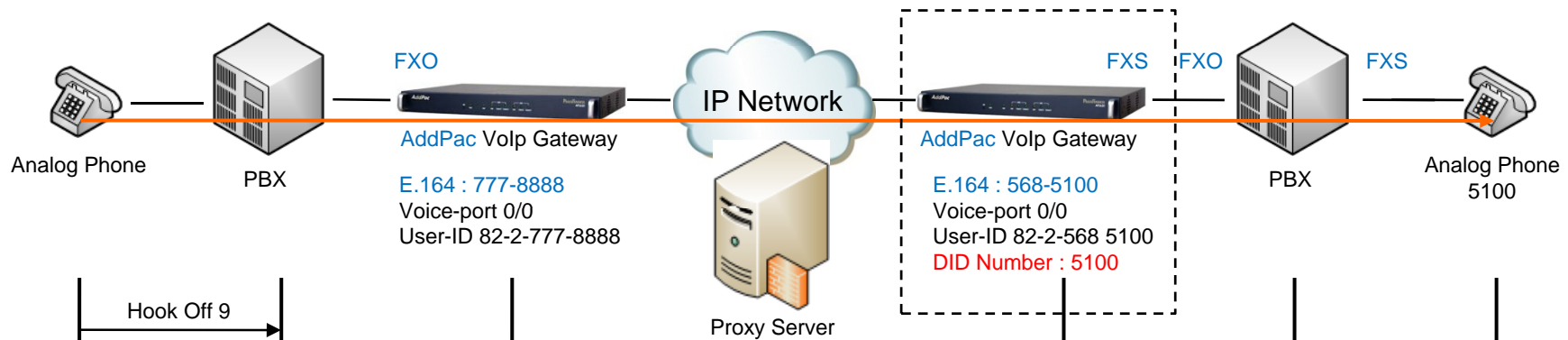
Network Diagram(NTT-PB : DTMF)



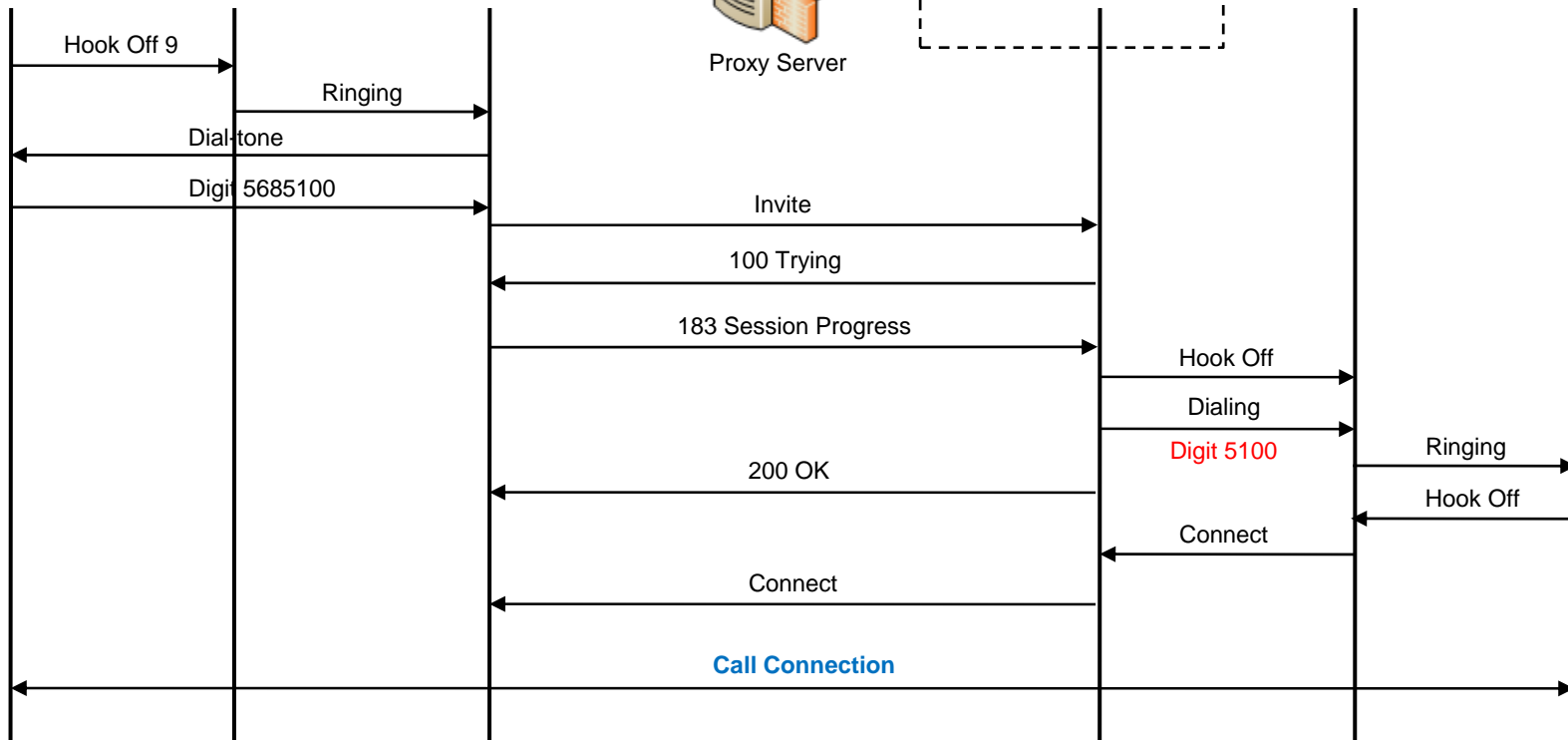
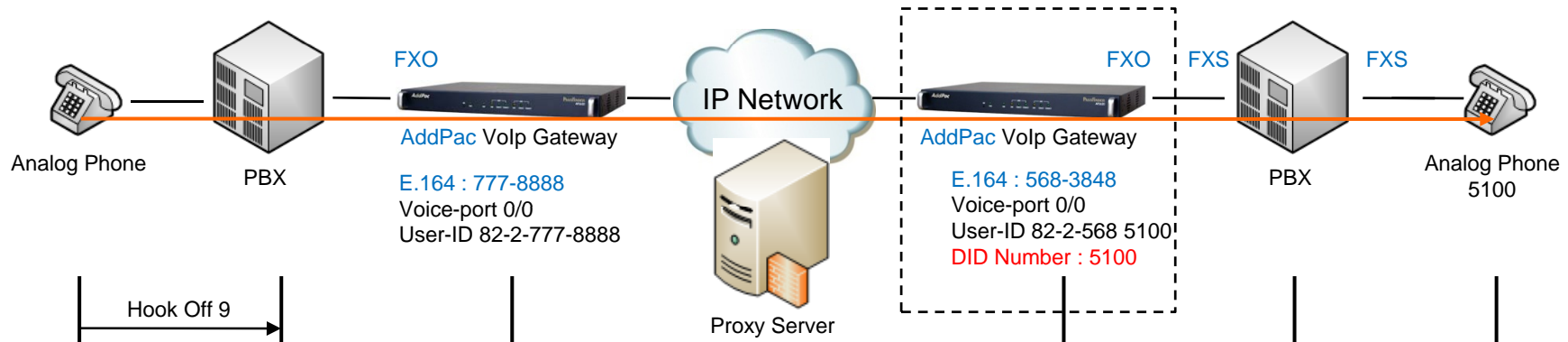
Network Diagram(NTT-Modem : FSK)



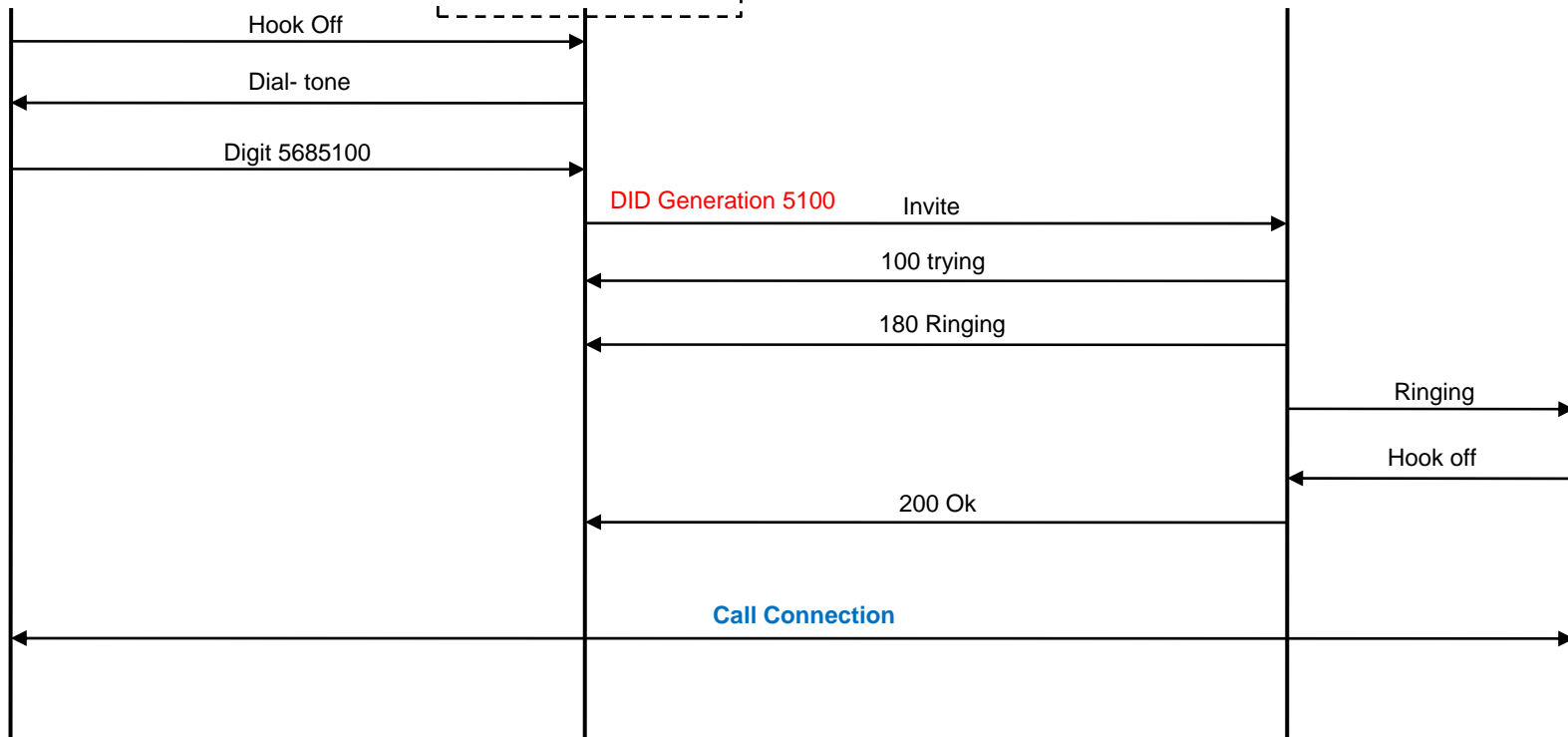
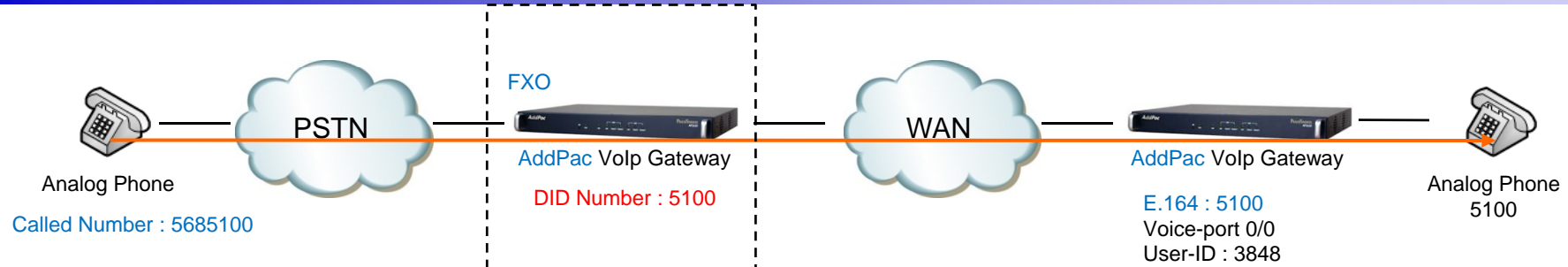
Signaling Flow - FXS



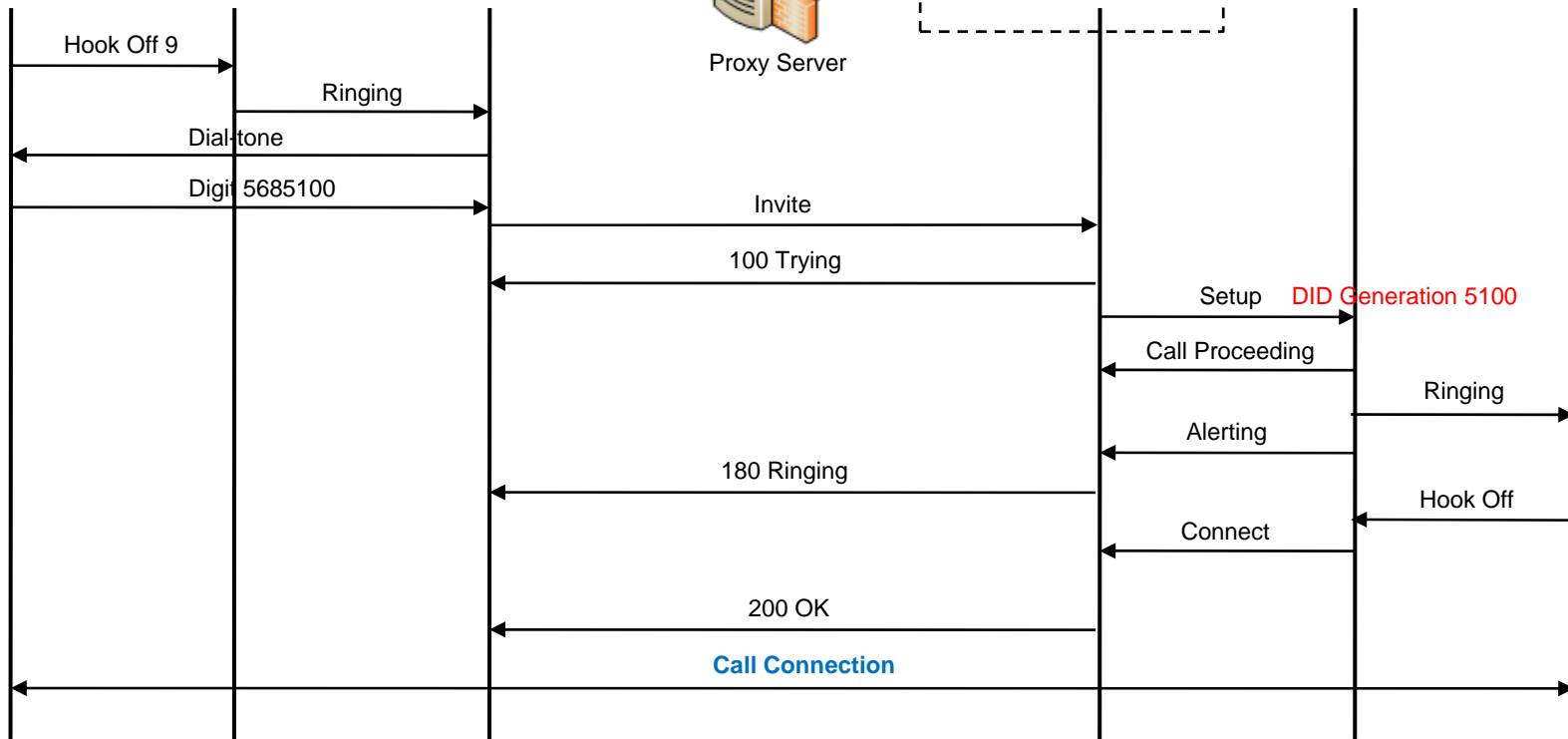
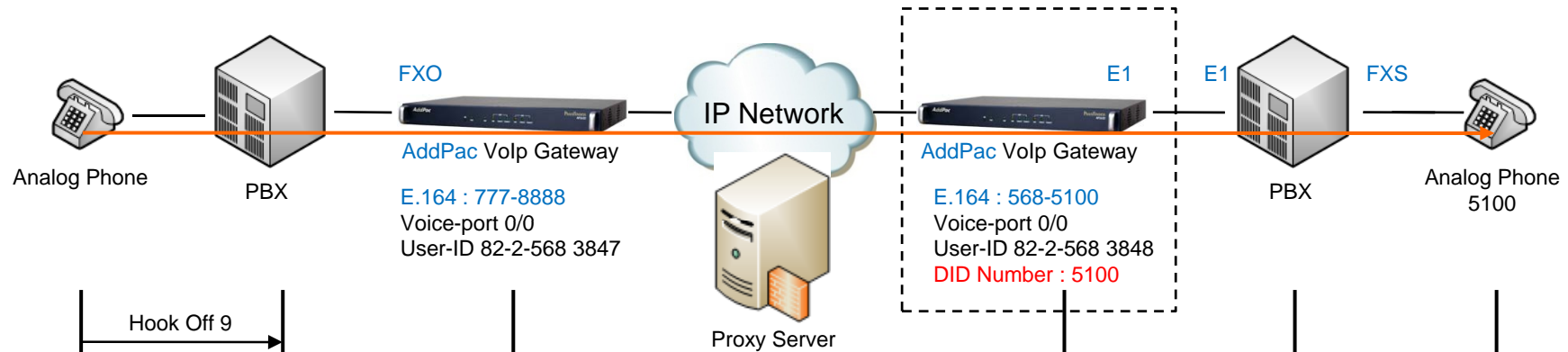
Signaling Flow - FXO



Signaling Flow - FXO



Signaling Flow – ISDN PRI



Command Line Interface

FXS, ISDN DID Configuration Command (Default : Disable)

1. Normal : DTMF Type Digit Transmission (forward digits after hook off.)
 2. None : Disable DID Feature
 3. NTT-PB : NTT-PB Type Digit Transmission
 4. NTT-Modem : FSK Modem Type
- CID function should be enabled for NTT-Modem DID service plus CID service.
 - CID function is disabled as a default value.

Command Line Interface

Welcome to AP2620 !

login: root ← Login

Password:

AP2620 - Login : root at tty/1 on Tue Jan 10 10:33:06 2012

AP2620_A#

AP2620_A# configure terminal ← Global Configuration

Enter configuration commands, one per line. End with CNTL/Z

AP2620_A(config)# voice-port <slot>/<port> ← Voice-Port Interface Configuration

AP2620_A(config-voice-port-0/0)# did { none | normal | ntt-modem | ntt-pb } ← DID Command

normal set normal mode (default : forward digits after hook off.)

none set none forward digit mode

ntt-modem set NTT modem mode

ntt-pb set NTT PB mode

AP2620_A#

Command Line Interface

- Transmission All Digit

AP2620_A#	
AP2620_A# dial-peer voice 0 pots	← Pots Peer Configuration
AP2620_A# destination-pattern 5683848	← Destination Pattern Configuration Command
AP2620_A# port 0/0	← Port Configuration Command
AP2620_A# forward-digit from 0	← Digit Transmit from 0 th Digit Position
AP2620_A#	

- Transmission Part of Digit – forward digit from

AP2620_A#	
AP2620_A# dial-peer voice 0 pots	← Pots Peer Configuration
AP2620_A# destination-pattern 5683848	← Destination Pattern Configuration Command
AP2620_A# port 0/0	← Port Configuration Command
AP2620_A# forward-digit from 4	← Digit Transmit from 4 th Digit Position(3848)
AP2620_A#	

Command Line Interface

- Transmission Part of Digit– forward digit last

```
AP2620_A#  
AP2620_A# dial-peer voice 0 pots ← Pots Peer Configuration  
AP2620_A# destination-pattern 5683848 ← Destination Pattern Configuration Command  
AP2620_A# port 0/0 ← Port Configuration Command  
AP2620_A# forward-digit last 4 ← Digit Transmit from last 4 digit position  
AP2620_A#
```

- Transmission Part of Digit - Prefix

```
AP2620_A#  
AP2620_A# dial-peer voice 0 pots ← Pots Peer Configuration  
AP2620_A# destination-pattern 5683848 ← Destination Pattern Configuration Command  
AP2620_A# port 0/0 ← Port Configuration Command  
AP2620_A# Prefix 2000 ← Transmit Digit 2000 to PBX  
AP2620_A#
```



Thank you!

AddPac Technology Co., Ltd.
Sales and Marketing

Phone +82.2.568.3848 (KOREA)

FAX +82.2.568.3847 (KOREA)

E-mail sales@addpac.com