

End User IP Management

Function description

The End User IP Management is a function to configure WAN interface to assign the Public IP address of AddPac VoIP gateway via Web.

If a VoIP service provider uses this function, the end user support will be more flexible and cost effective. For example, if there are customers who have AddPac VoIP gateway sent through mail or home delivery service by service provider, the service provider can configure this VoIP gateway in remote with the 'End User IP Management'.

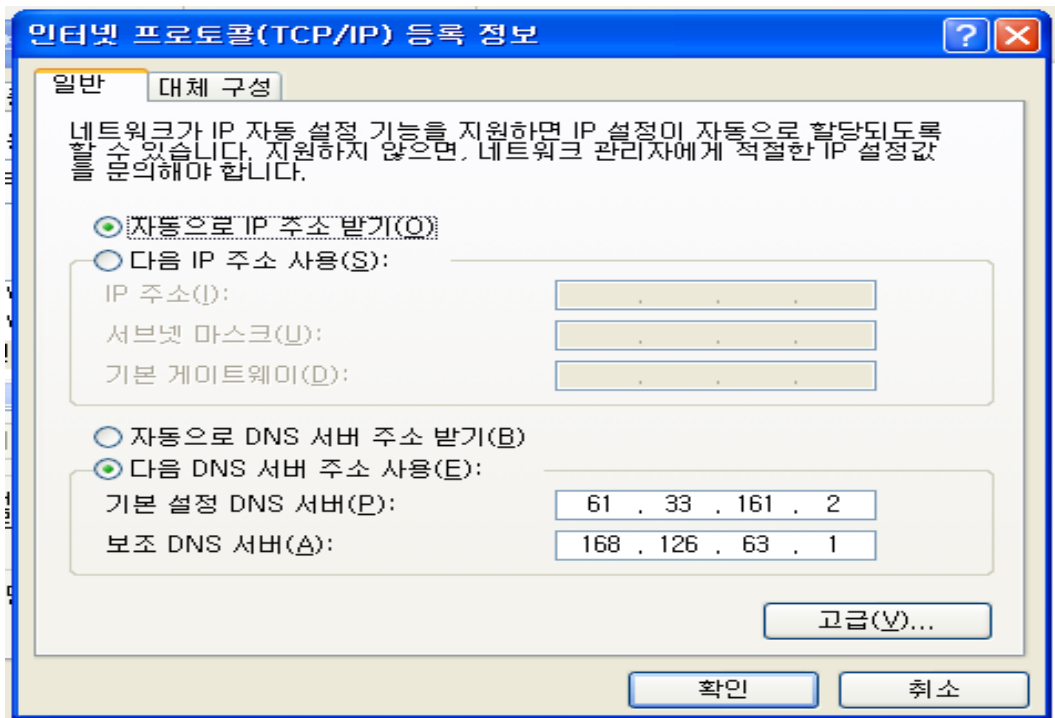
If a user (service subscriber) configures his VoIP gateway's WAN connection mode, the VoIP gateway will be assigned a public IP address. And this IP address will be passed to internal PC. A service subscriber informs the assigned Public IP address to VoIP service provider. The service provider confirms the notified IP address, and can configure the VoIP gateway via remote login with that IP address.

The End User IP Management function should be used with the 'Public IP Address Sharing' Function together.

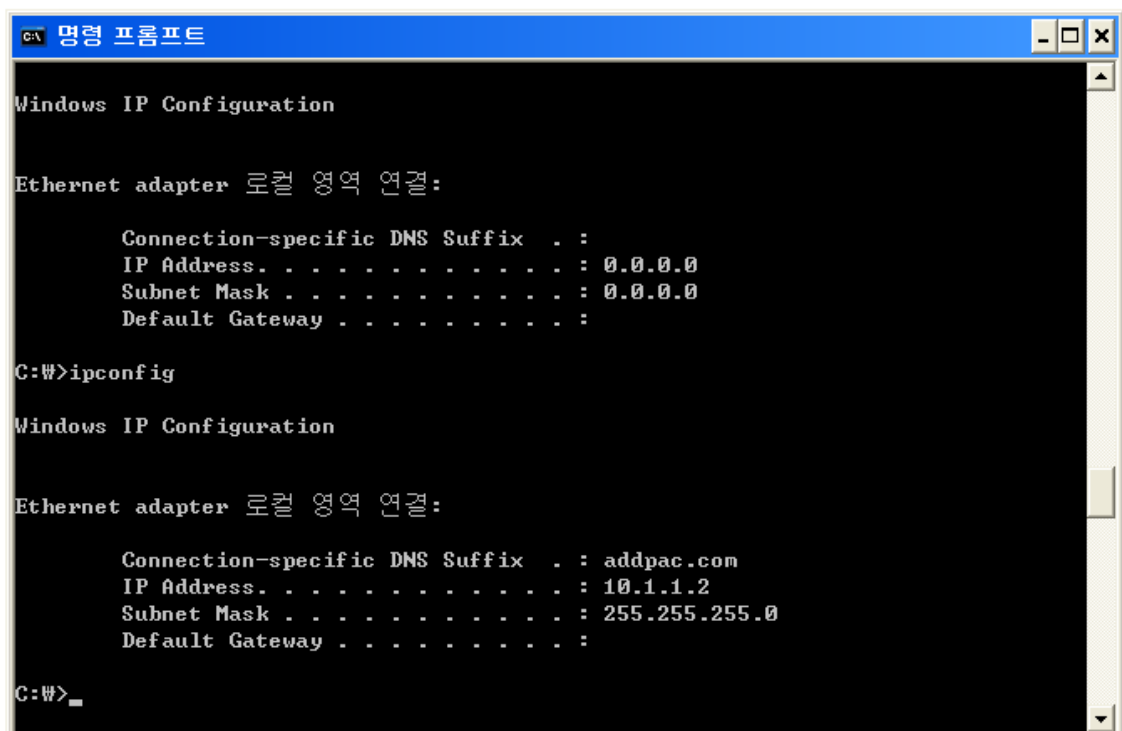
The following sequences explain the End User IP Management configuration.

1. Turn off the AddPac VoIP Gateway's power.
2. Connect PC's LAN Port to AddPac VoIP gateway's LAN port for inter-connection between PC and VoIP gateway.
3. Shut off the AddPac VoIP Gateway's WAN interface connection.
4. Turn on the AddPac VoIP Gateway's power.

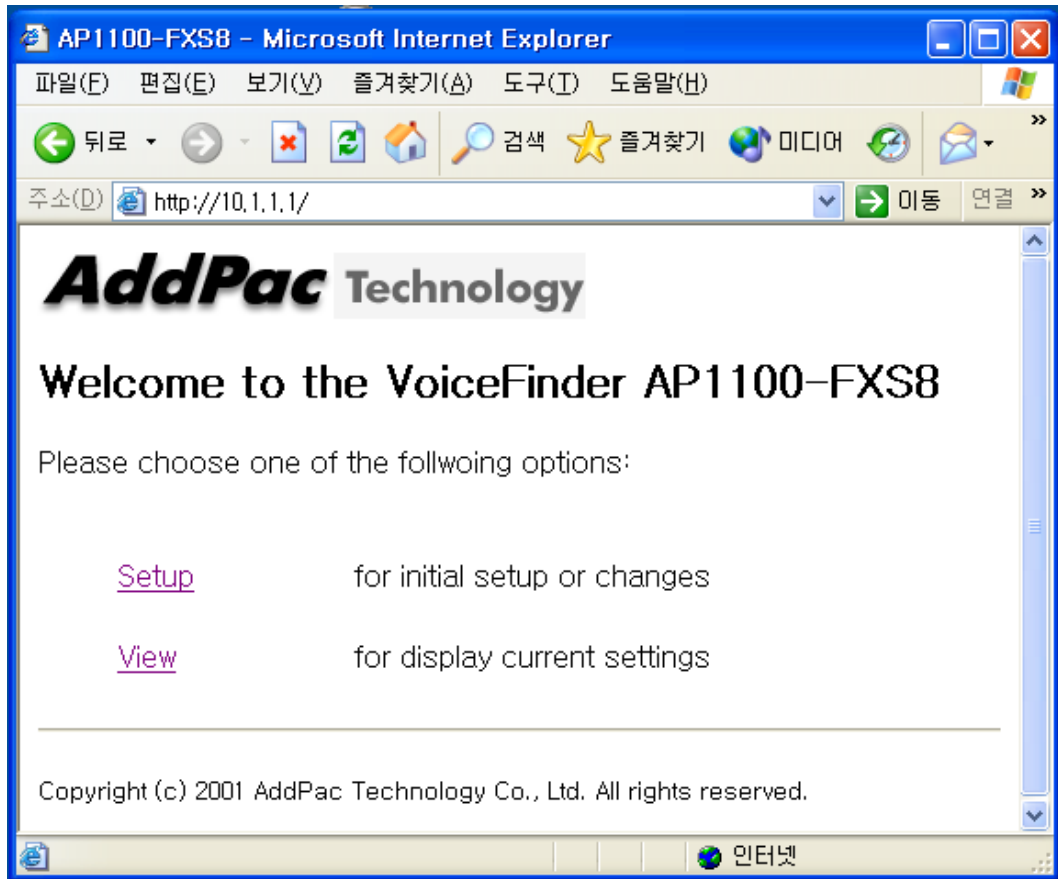
1. In the Local LAN PC's TCP/IP registration information, set DHCP (Dynamic IP address assignment) mode as a IP assignment scheme.



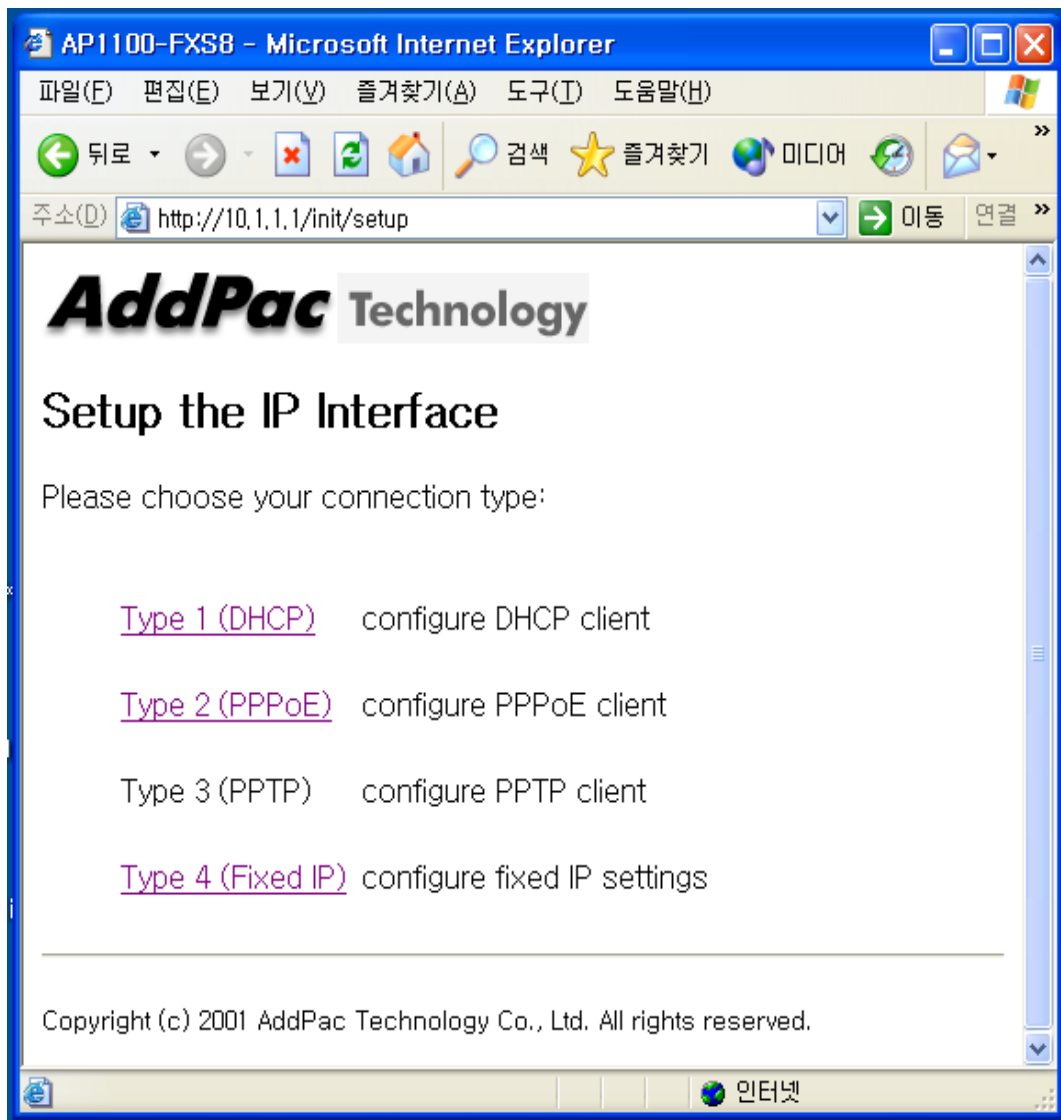
2. Check whether the internal PC's IP address is assigned from the VoIP gateway. The assigned IP address will be in the 10.1.1.2~10.1.1.254 area.



3. Connect to the VoIP gateway via Web. This IP address is 10.1.1.1 (<http://10.1.1.1/>)
If you want to see the current configuration of VoIP gateway, select the 'view' mode,
and if you want to configure the VoIP gateway mode, select 'setup' mode.



4. Select a proper configuration mode among the following 4 types. Type 1 (DHCP) is suitable for Cable modem user. Type 2 (PPoE) is suitable for ADSL modem user, but some ADSL subscribers use type 3 (PPTP). Type 4 (Fixed IP) is suitable for Fixed IP user.



5. Input the proper parameter data for each configuration setting mode. The Host name parameter is required for Type 1 DHCP mode. In the most of subscriber, it is don't care to input any data, but some DHCP servers use the authentication function with host name. If PPPoE/PPTP is used, the user ID, password and authentication type (PAP/CHAP) data is need. KT ADSL service is PAP type generally. If type4 is used, it is necessary to input the assigned IP address. After the key input of configuration data, please click to 'enter' button.

AP1100-FXS8 - Microsoft Internet Explorer

파일(F) 편집(E) 보기(V) 즐겨찾기(A) 도구(T) 도움말(H)

주소(D) http://10.1.1.1/init/setup/pppoe

AddPac Technology

Setup type 2 (PPPoE)

Please enter the following values:

Username

Password

Confirmation Please enter username and password again.

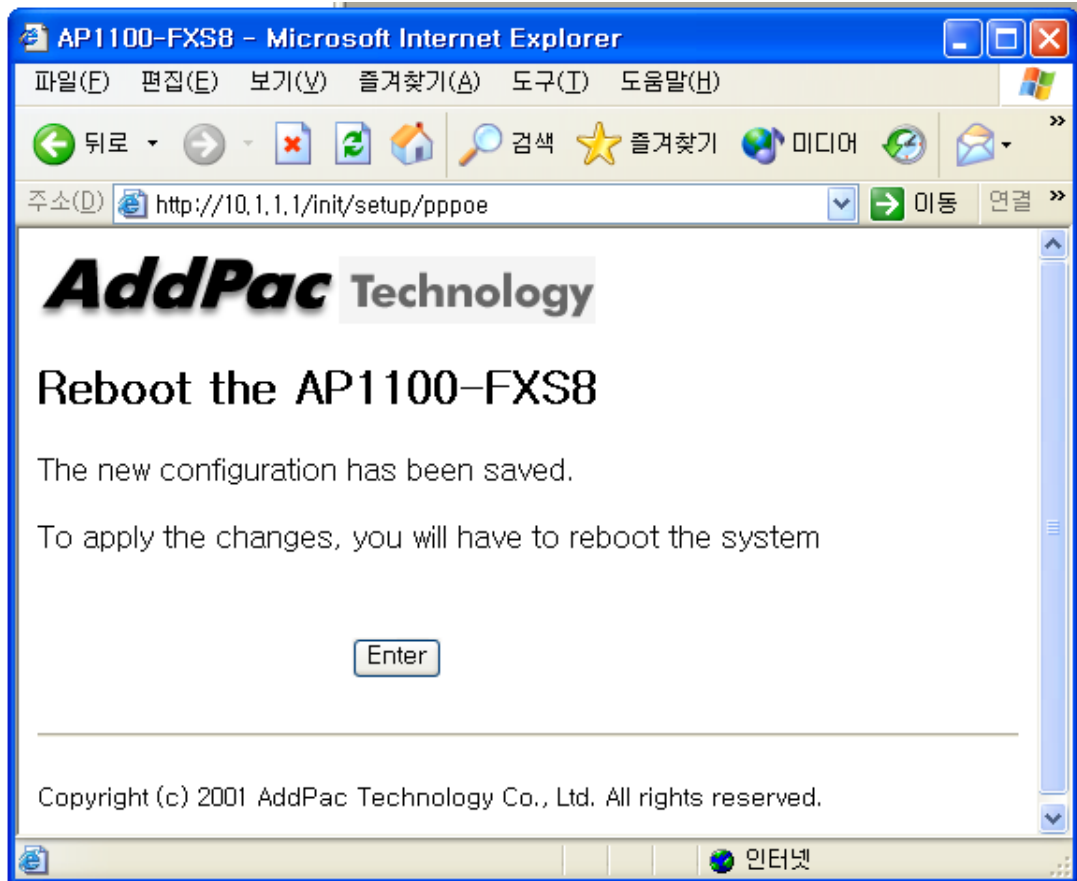
Username

Password

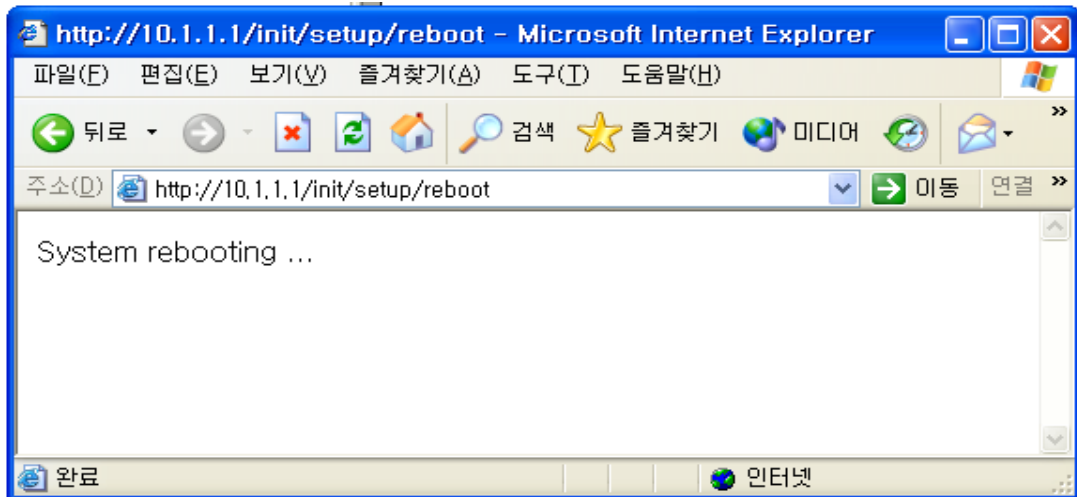
Authentication PAP CHAP

인터넷

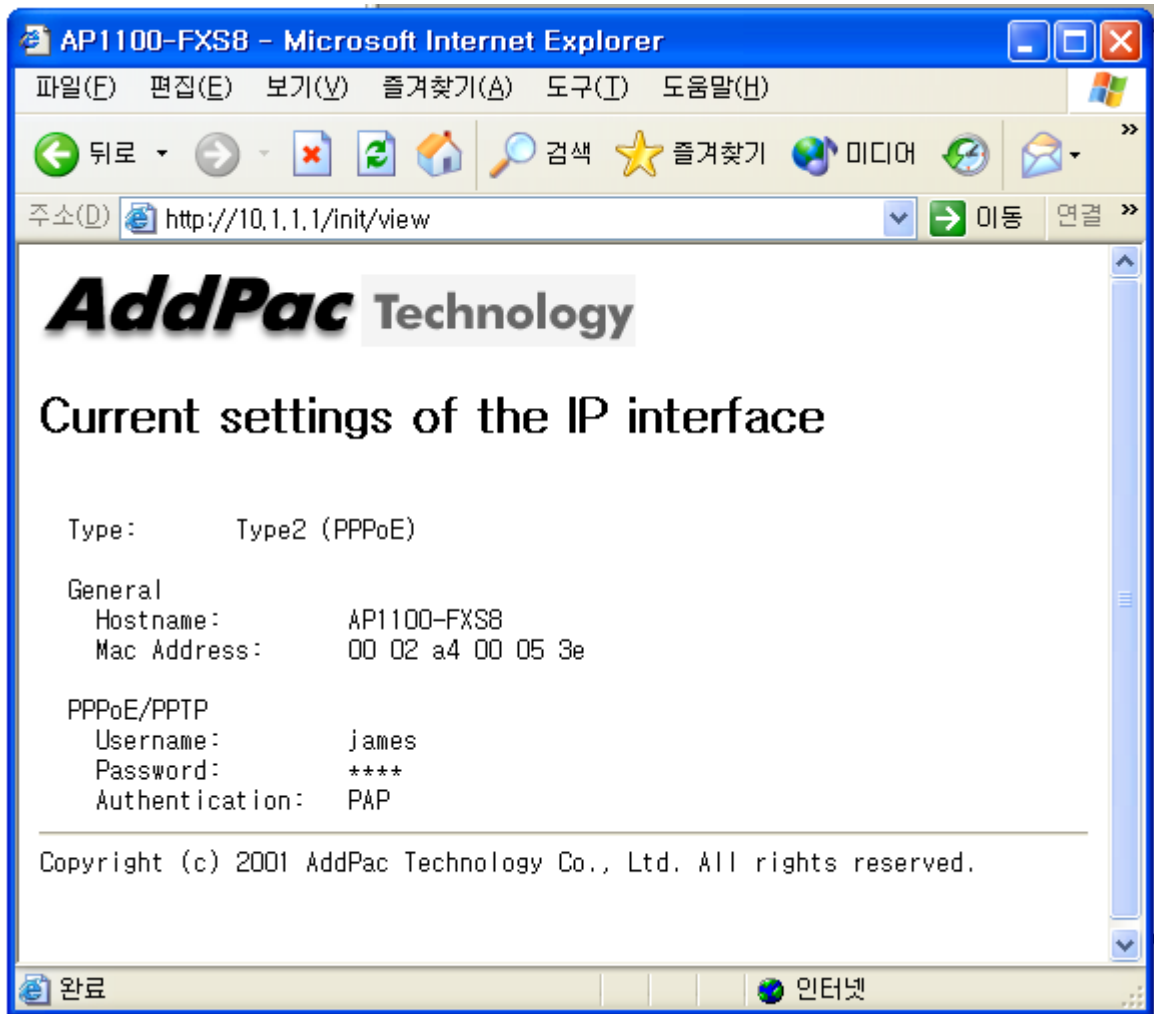
6. After all configuration information fields are fulfilled, clicked "enter" button. There will be displayed the rebooting message.



7. There will be displayed the "system rebooting" message. And, after 1~2 minutes, it is possible to connect the VoIP gateway.



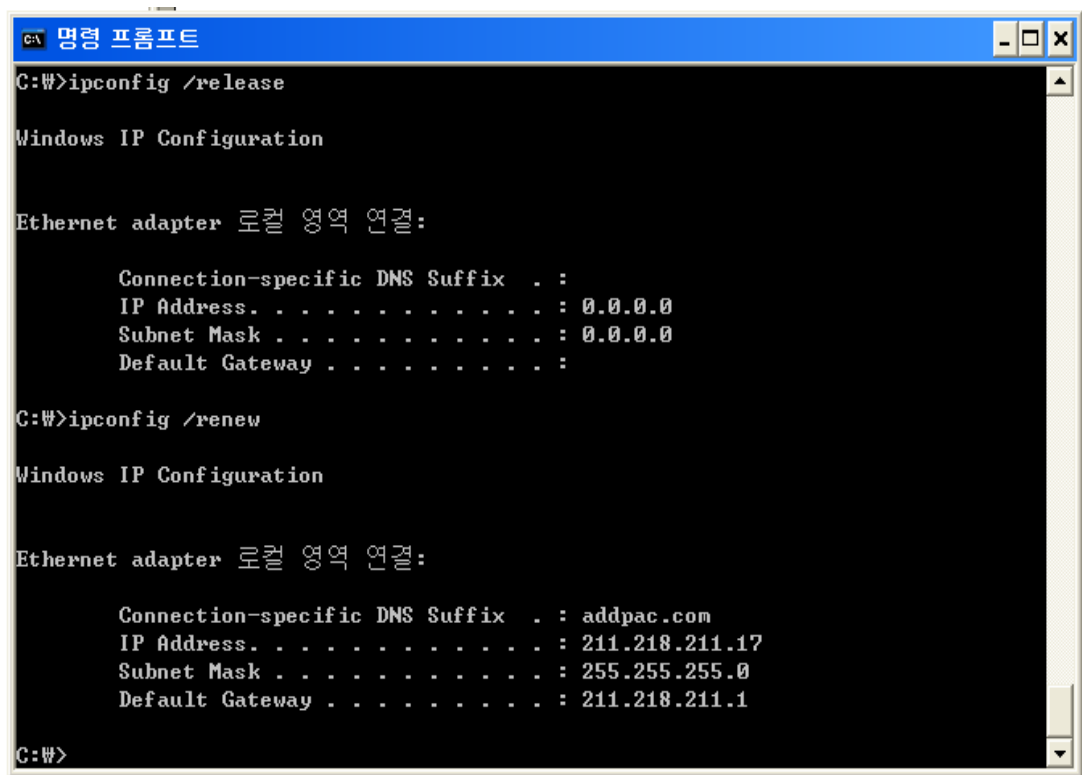
8. After retrying connection, check the configuration status by selecting 'view' mode. If there will be a configuration error message, it is necessary to setup the configuration one more time. Following is the example of PPPoE.



9. If the configuration is OK, after connecting the VoIP Gateway's WAN interface to Internet, and reboot the VoIP gateway.

10. Return the assigned PC's private IP address using the " ipconfig /release" command.

11. After rebooting the VoIP gateway, check the Public IP address using the " ipconfig /renew" command after 2~3minutes.



```
C:\>명령 프롬프트
C:\>ipconfig /release

Windows IP Configuration

Ethernet adapter 로컬 영역 연결:

    Connection-specific DNS Suffix  . :
    IP Address. . . . .               : 0.0.0.0
    Subnet Mask . . . . .            : 0.0.0.0
    Default Gateway . . . . .        :

C:\>ipconfig /renew

Windows IP Configuration

Ethernet adapter 로컬 영역 연결:

    Connection-specific DNS Suffix  . : addpac.com
    IP Address. . . . .               : 211.218.211.17
    Subnet Mask . . . . .            : 255.255.255.0
    Default Gateway . . . . .        : 211.218.211.1

C:\>
```