

DID(direct Inward Dialing) modem/PB Type Support

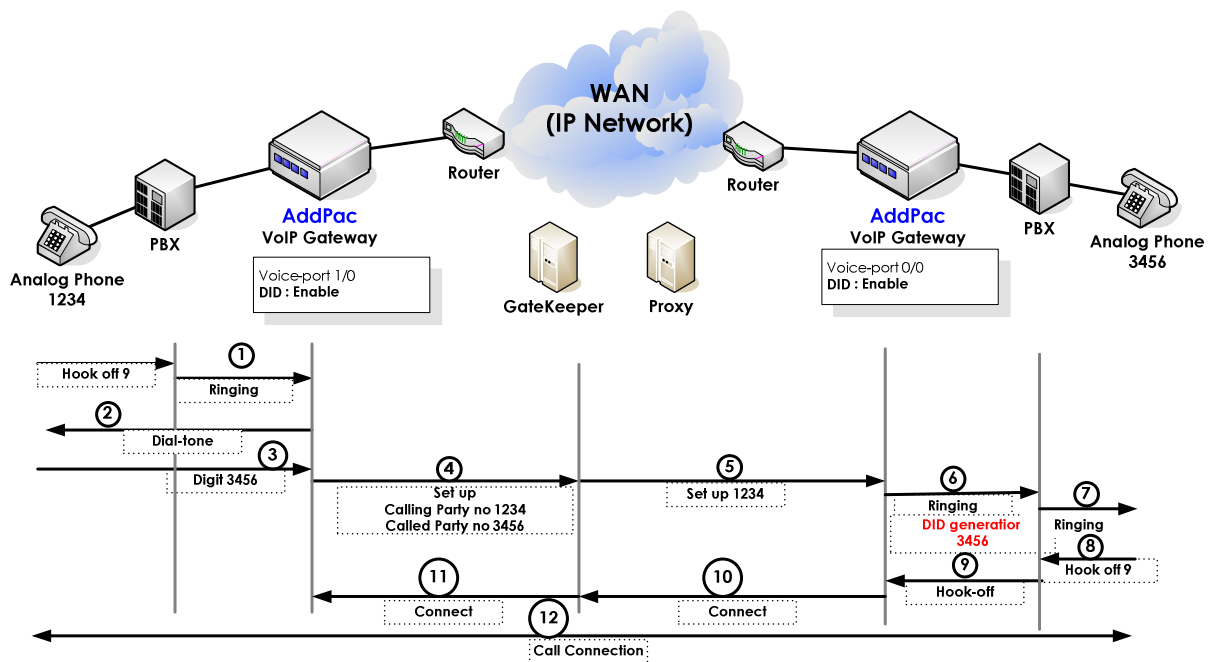
Category	S/W Release Version	Date
General	8.10	June. 2004

The gateway supports DTMF, Modem and PB(Push/Button Dial Signal) types for tone generation. It is applied to the FXS ports.

DID enables callers to dial directly into an extension on a PBX without having to use an auto-attendant. The dialed extension number is forwarded to the PBX and the call is connected to the local telephone.

AddPac's all VoIP products supports the feature and it can be enabled/disabled by configuration.

Network Diagram



[DID(Direct Inward Dialing) Feature]

Commands & Syntax

Enable DID(Direct Inward Dialing)

Step	Command	Remark
1	# # config	Enter APOS Configuration Mode.
2	(config)# voice-port 0/0	Select the port.
3	(config-voice-port-0/0)# (config-voice-port-0/0)# did {none normal ntt-modem ntt-pb}	Configure the preferred DID type. None : Disable DID feature Normal : DTMF type Ntt-modem : FSK Modem type Ntt-pb : PB type

- Note :
 - forward-digit, prefix
 - The digit forward type to the PBX's extension/trunk line connected to the Voice-Port is decided by DID.

Default : did-normal